

# SAMBHAV

WALKESHWAR



DIVINITY REALTY

**YOUR LIFE BEGINS ABOVE EVERYONE ELSE'S**



LIVE ABOVE THE EXTRAORDINARY.  
LIVE ABOVE THE MAGNIFICENCE.  
LIVE ABOVE THE CLOUDS.  
LIVE BY THE BAY.

**SAMBHAV**  
AT WALKESHWAR







# LIVE BEYOND FABLES LIVE MODERN DAY NOSTALGIA

The precinct of Walkeshwar is surrounded by the stunning Queen's Necklace or Marine Drive, Malabar Hill and Hanging Gardens. A locality so plush yet peaceful, so nostalgic yet modern, so accessible yet secluded, it truly is a rare find in a city like Mumbai.





# THE SEA ON 3 SIDES LIFE ON ALL SIDES

With the first residential floor beginning at appx 50 metres above sea level, you enjoy a panoramic sea view from the very first floor. With exceptional city and sea views from almost every room, you can spend the day admiring the sunrise and sunset from the comfort of your home.

CHOWPATTY

QUEEN'S  
NECKLACE

GOVERNOR'S  
BUNGALOW

BANGANGA  
TANK



ACTUAL VIEW





LIVE BEYOND SEA VIEWS  
LIVE A NEW WAVE OF LIFE

## LIVE BEYOND THE REGULAR LIVE A NEW WORLD OF CONVENIENCE

Accessibility and convenience are key to the Sambhav living experience. The finest educational institutions, the most advanced medical facilities, the finest shopping districts; all perfectly well connected from your plush abode. Thanks to the splendid Rajiv Gandhi Sea Link; the Suburbs, the Airport and the Business Hubs of Parel, BKC and Andheri are all just a short drive away.

### EDUCATION

- Gopi Birla Memorial School
- Villa Theresa High School
- Cathedral & John Connon High School
- St. Elizabeth's Convent School
- Bombay International School
- Sophia College
- Wilson College
- St. Xaviers College
- Bhavans College
- J. J. School of Art
- Jai Hind College
- H.R. College of Commerce and Economics

### JAIN TEMPLE

- Shripal Nagar Temple
- Babu Amichand Panalal Jain Temple
- Chandanbala Jain Temple

### HOSPITALITY

- InterContinental Hotel
- Oberoi Hotel
- Taj Mahal Hotel
- Trident Hotel

### HOSPITALS

- St. Elizabeth's Hospital
- Saifee Hospital
- Jaslok Hospital
- Breach Candy Hospital

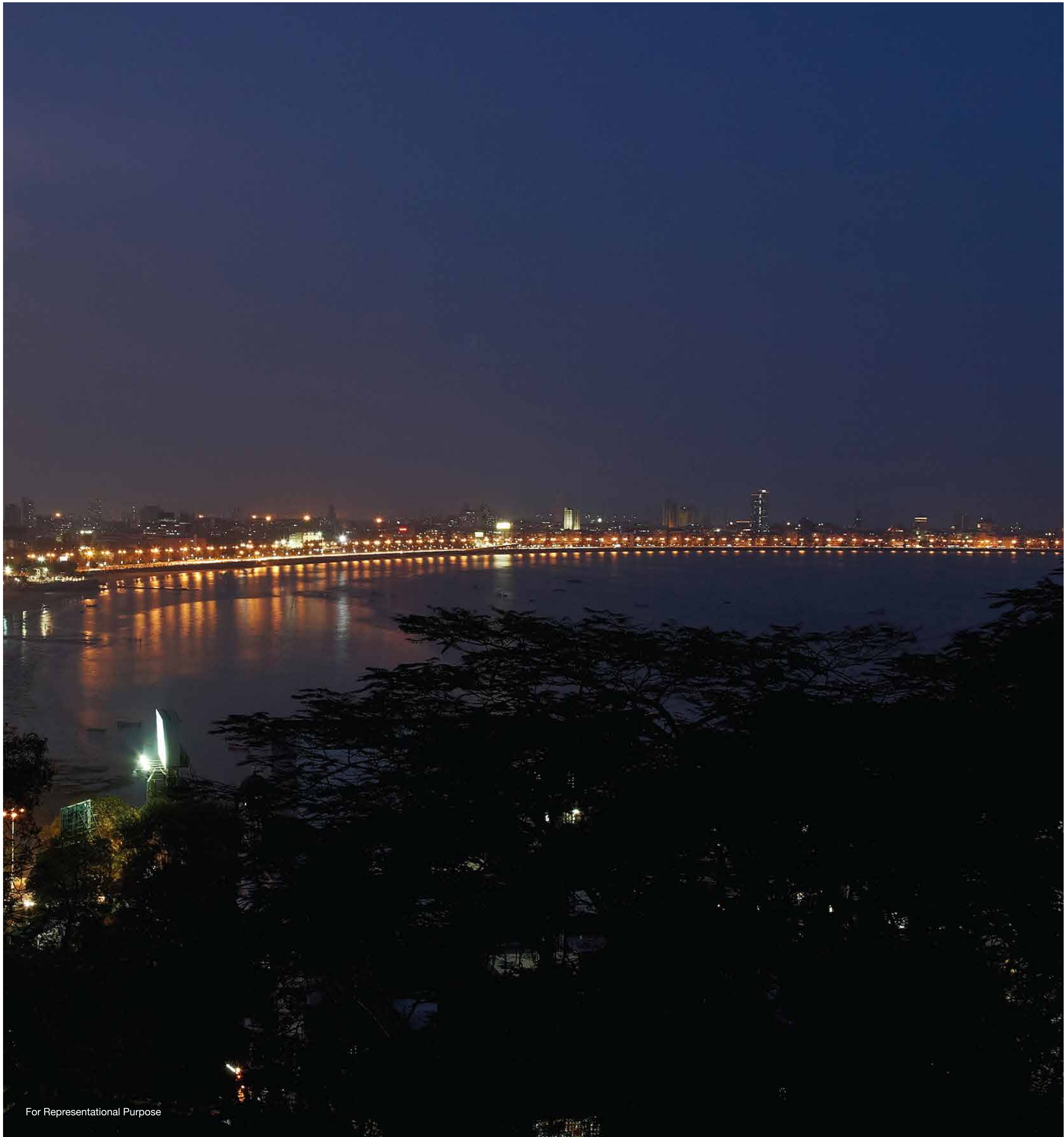
### LEISURE

- Western India Automobile Association Club
- Breach Candy Club
- P.J. Hindu Gymkhana
- The Pranshukhlal Mafatlal Hindu Bath And Boat Club
- National Sports Club of India
- Willingdon Golf Club

### PARKS & GARDENS

- Priyadarshini Park
- Green Park
- Hanging Gardens
- Tata Garden
- Amarsons Garden
- Chowpatty Beach





**LIVE BEYOND THE HORIZON  
LIVE BY A TIMELESS LANDMARK**



THE SUN RISES  
IN YOUR LIVING ROOM  
AND SETS IN YOUR BEDROOM

ACTUAL VIEW





## LIVE BEYOND LUXURY LIVE AN EXPANSIVE LIFE

A double height, expansive entrance lobby that is marble clad and embellished with a crystal chandelier, allows you to feel the grandeur even before you enter your home.

DESIGNED BY TALATI & PANTHAKY



ARTIST'S IMPRESSION



## LIVE BEYOND THE ORDINARY LIVE EXTRAORDINARY

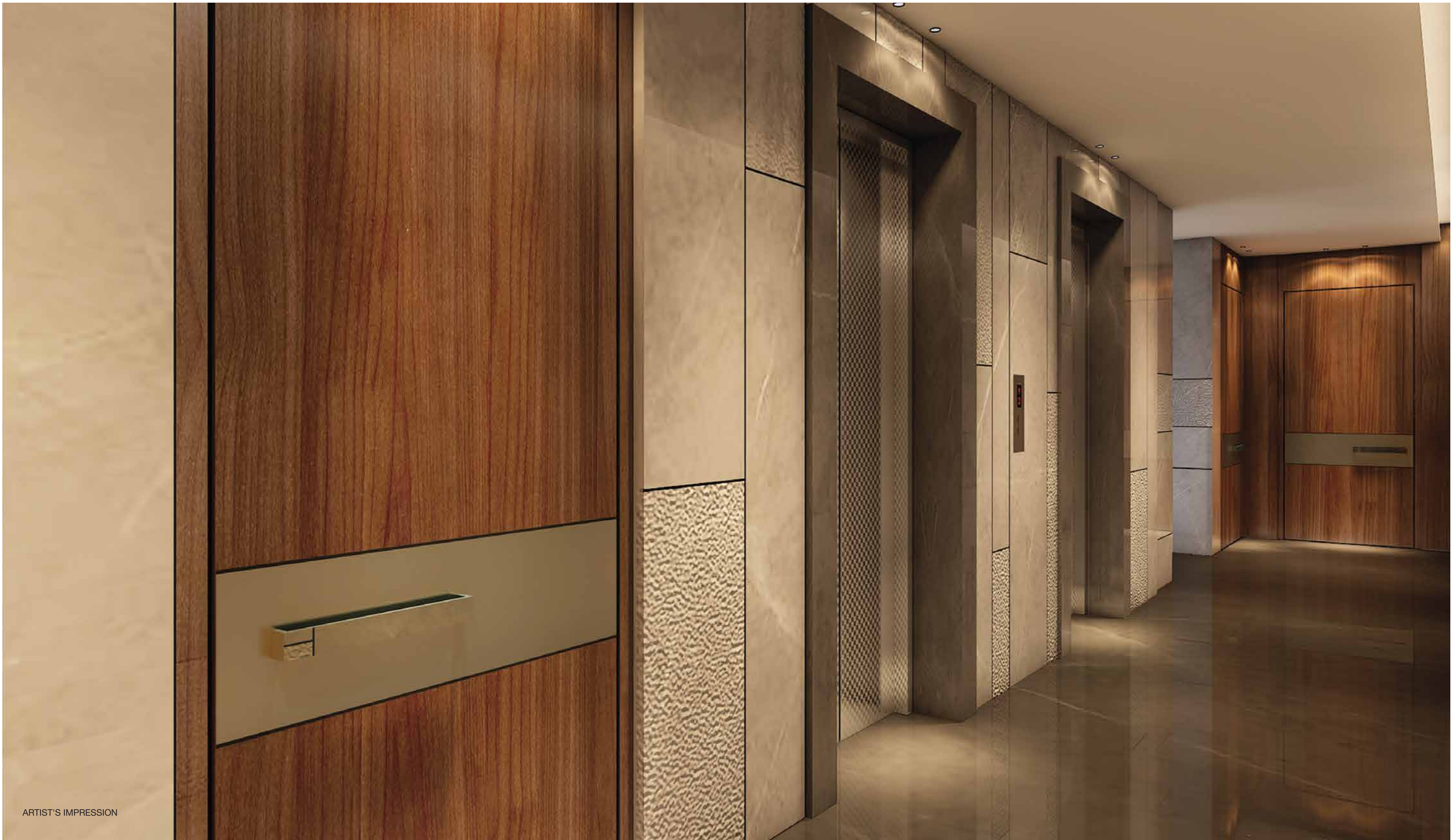
As soon as you step out of the elevator, the luxurious interiors and artistic architectural touches draw you in. The thoughtful design and grand setting makes for an envious residence.

DESIGNED BY TALATI & PANTHAKY



ARTIST'S IMPRESSION





**THE OPULENCE BEGINS AT THE LOBBY  
AND CONTINUES TO YOUR HOME**

DESIGNED BY TALATI & PANTHAKY





## LIVE BEYOND MAXIMUM LIVE ULTRA NATURAL

A home designed to have maximum breeze, cross-ventilation, natural light and privacy, just the way you like it. Visitors will not just be envious, they'll also want to spend a lot more time in your thoughtfully laid out home.

DESIGNED BY TALATI & PANTHAKY

ARTIST IMPRESSION OF THE DREAM FLAT  
FIXTURES AND FURNISHINGS SHOWN ARE ONLY FOR REPRESENTATION AND SHALL NOT BE PROVIDED IN THE APARTMENT.  
THE APARTMENTS SHALL BE PROVIDED IN A BARE SHELL CONDITION.



## LIVE BEYOND DESIGN LIVE YOUR DREAM HOME

With a tastefully done up minimalistic abode, you literally have the canvas to paint the décor of your dreams. The bare-shell design with minimum beams and columns has been specifically created keeping connoisseurs such as yourself in mind.

DESIGNED BY TALATI & PANTHAKY

ARTIST IMPRESSION OF THE DREAM FLAT  
FIXTURES AND FURNISHINGS SHOWN ARE ONLY FOR REPRESENTATION AND SHALL NOT BE PROVIDED IN THE APARTMENT.  
THE APARTMENTS SHALL BE PROVIDED IN A BARE SHELL CONDITION.



LIVE BEYOND FITNESS  
LIVE A NEW APPROACH TO LIFE







ARTIST'S IMPRESSION

# LIVE BEYOND TODAY LIVE FOR TOMORROW

As your family grows, so will its mobility needs.  
And as you grow in life, so does your taste in automobiles. With ample parking, your home will become the ideal destination for friendly get-togethers and family gatherings.



## LIVE BEYOND THE GLIMMER LIVE A LIFE THAT'S UTTERLY SPARKLING

Sambhav is set to be a modern addition to South Mumbai's stunning skyline, by day and night. A landmark that's prominently visible from the Queen's Necklace, it will soon be the most envied destination of Walkeshwar. And the glorious night view of the bay-city from your home's vantage point will be one to cherish for generations to come.



ARTIST'S IMPRESSION



# MEET THE MAKERS

## DIVINITY REALTY

- Divinity Realty is a Mumbai based company with over 4 decades of real estate expertise. Part of the Hubtown Limited Group (erstwhile Ackruti City Limited), Divinity Realty has vast experience in developing properties across Mumbai, Pune and Gujarat.
- The Group has developed more than 14 Million Sq. ft. of Real Estate including Redevelopment, PPP, SRA and Urban Renewal Schemes. One of Divinity Realty's flagship premium projects that is currently underway is 25 South, an uber luxury residential offering by the bay at Prabhadevi, Mumbai.



25 South, Prabhadevi



Hubtown Harmony, Matunga East

## NHP GROUP

- NHP GROUP incorporated in year 2014, with a dream to be a most Trustworthy Brand in Real Estate Industry for all kinds of development need and not to be just for commercial benefits.
- The founder' s Mr. Nitin T. Sanghavi & Mr. Premal C. Desai by their passion for creating better communities, have enhanced life of many people which is proven fact through all their projects.
- Under their able leadership and pioneering vision, Team NHP has been inspired to continuously adapt best trade practices and evolve as a cohesive force to set new benchmark of excellence.
- Today NHP Group is renowned for its customer centric approach, reliability, compassion, vigilance and above all uncompromising quality of standards.
- NHP Group by delivering the best in Quality, Value to its customers and better Returns to all its stakeholders, has earned title of Trustworthy in a short span of time.



Marshall Horizon, Vile Parle (East)



Sudhanshu, Vile Parle (East)



Anshul Heights - A & B Wing, Kandivali (West)



Sea Jewel, Malad (East)



## PROJECT TEAM

### DEVELOPERS:



**DIVINITY REALTY**

### DESIGN ARCHITECTS:



### ARCHITECTS:



### MEP CONSULTANTS:



### STRUCTURAL ENGINEER



C O L A C O  E N G I N E E R S

### LIAISON ARCHITECTS:



[www.sambhav.co.in](http://www.sambhav.co.in)



**MahaRERA Registration No: P51900025024**  
Available at website <https://maharera.mahaonline.gov.in>

SAMBHAV LOCATION: 23 F DONGERSI ROAD, WALKESHWAR - MUMBAI 400006.  
LANDMARK: NEXT TO VANDAN BUILDING AND AKRUTI AASTHA.

Disclaimer: The entire Common facilities, Amenities and Clubhouse facilities displayed in this brochure and otherwise in any communication shall be ready only at the time of completion of the entire development of the project/completion of the last building to be developed in the project. The likely date of completion of the Amenities / Common facilities / Clubhouse is as per what is registered as per the date of completion registered with MahaRERA Authority. The Allottee, if opts to Purchase a unit, is aware that the amenities will not necessarily be handed over with the apartment and he/she/they will not raise any claim/compensation in respect of non-availability / delivery of such Common facilities, Amenities, Clubhouse as shown in the brochure. The pictorial depiction of the amenities are indicative in nature and do not represent the final look, feel and size of the amenities which shall be provided.