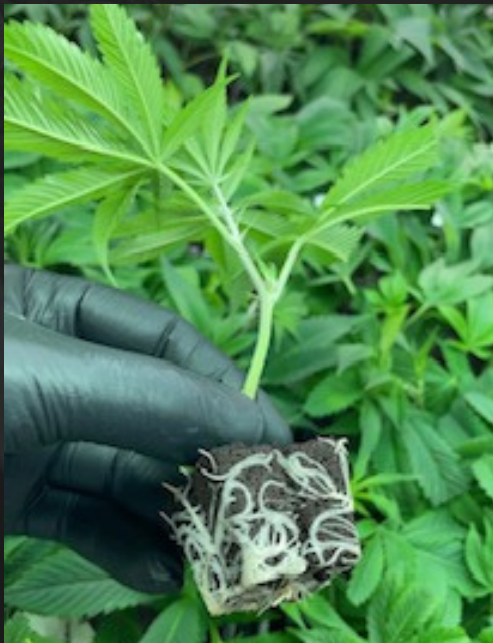


Autumn Catalogue



LIFECYCLEBOTANICS

TABLE OF CONTENTS

CURRENT PRODUCTION FOR 2025

BLACKOUT BOBBY 3

Indica Dominant Hybrid
Gelato x Rainbow Chip

GASTRO POP 4

Indica Dominant Exotic
Grape Gas x Apples n' Bananas

ISLAND PINK KUSH 5

Indica Dominant Hybrid
OG Kush descendant

JELLY BREATH 6

Indica Dominant Hybrid/Exotic Gas
Mendo Breath x Do-si-dos

PINE TAR KUSH 7

Pure Indica
Original Landrace Strain

SUDZ 8

Sativa Leaning Hybrid
The Soap x Runtz

THE REAL DB 9

Heavy Indica
Unknown Lineage

NEW RELEASES FOR 2025

CADILLAC RAINBOWS 10

Indica Dominant Exotic
Pure Michigan x Runtz

LINDSAY OG 11

Indica Dominant / Gas
OG Kush descendant

MASTER KUSH ULTRA 12

Indica Dominant / Gas
OG Kush x G13

MORE INFORMATION...

CURRENT R&D - AUTUMN 2025 13-18

PRE-START PLANTS 19

PHENOTYPING SERVICES 20

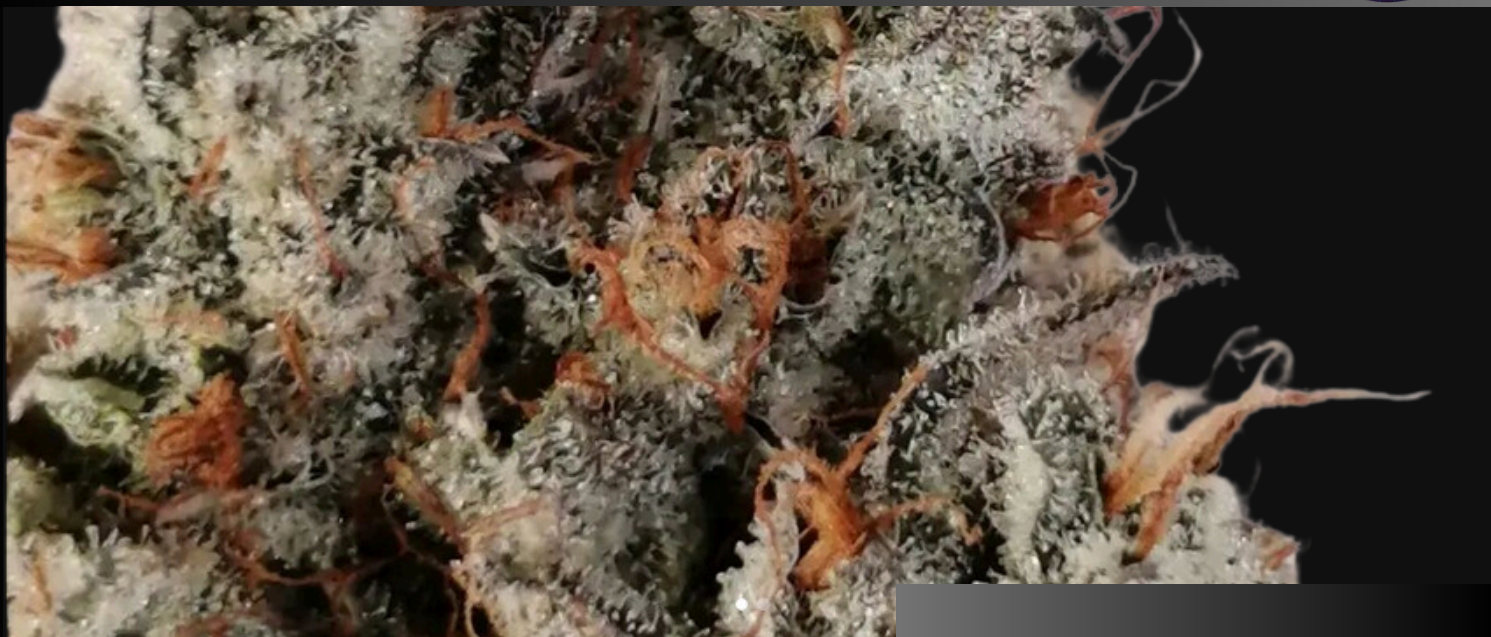
GENETIC HOUSING & SUPPLY 21

RESEARCH & DEVELOPMENT 22

ABOUT US 23



Blackout Bobby



Bobby gonna knock you out...

It's all in the name... Blackout Bobby is one to remember (or not remember) when it comes to heavy hitters as this might be the king of them all.

This strain features dense, sugar coated buds and flavours reminiscent of sweet cream, spice, pine and earth.



Grower's Information...

Blackout Bobby is a relatively low maintenance plant with a medium to tall height profile. It ideally suits being a multi-topped bush with evenly spaced branching and internodal spacing. It is highly responsive to the tedious grower and will yield a tremendously tasty product to the conscientious grower.

A Knockout Level Indica...

Described by some consumers as an "explosion of flavour with every puff," Blackout Bobby is true to its namesake when it comes to both taste and effect.

The finished product is top notch when it comes to visual appeal with an aromatic profile that is next level.

Prepare to be knocked into a whole new dimension!

Yield:	Heavy
Flower Time:	8.5 weeks
Height:	Medium
Veg Time:	Standard
THC Range:	27%
Terpenes:	3.1%
Dominant Terps:	β-Myrcene, β-Caryophyllene, Farnesene, Limonene





Gastro Pop



One out of the box

This highly sought after cultivar was phenotyped by Heat Hunters Genetics to produce possibly the best version of this cultivar available on the market today. An exotic lineage of Grape Gas and Apples n' Bananas, Gastro Pop ticks all the boxes for production, colours, potency and taste.



A Genetic that Pops with a Powerful Punch...

If what you're looking for is enormous "Wow" potential then this is the one for you! Gastro Pop has record breaking THC and Terpene potential, a whopper for production capability and beautiful colours, aromas and taste. This is a market favourite that is sure to please even the most hard to please growers and consumers alike!

Grower's Information:

Gastro Pop is an aggressive and very hearty strain. Most growers recommend pinching at a very early stage in veg and sometimes even a second time if running a full 21 days before transitioning the plant into flower. Plant structure features long arms with a heavy focus on flower size at the end of every branch.



Yield:	Heavy
Flower Time:	8.5-9 weeks
Height:	Tall
Veg Time:	Fast
THC Range:	27%
Terpenes:	4.2%+
Dominant Terps:	Limonene, β -Caryophyllene, α -Pinene, α -Humulene

Island Pink Kush

(LCB Edition)



An LCB Phenotype...

Sourced from the Legacy era, this is an exclusive phenotype brought to life by the Life Cycle Botanics Research & Development team. True to its well known name this is an original heavy gas strain that'll remind you of hotboxing bathrooms and basement chronic smoke fests!



The Old School Original...

Heavy gas, heavy production and a heavy coating of resin on super sticky buds makes this legendary classic a winner. Finally brought back out of our exclusive legacy strain collection, this powerful kush with a rich terpene profile won't let you down.

While the origins of this dank kush strain are somewhat murky, its effects are legendary, rising to popularity in the mid 2000's in the Pacific Northwest.

Grower's Information...

Island Pink is a low maintenance, standard profile plant that requires a modest amount attention but provides an amazing result. It responds extremely well to a single topping and can be grown in a variety of different cultivation styles. Rewarding are the results to the astute grower!



Yield:	Heavy
Flower Time:	9 weeks
Height:	Medium-Tall
Veg Time:	Moderate
THC Range:	27%+
Terpenes:	3%+
Dominant Terps:	Myrcene, Limonene, Caryophyllene, Linalool

Jelly Breath



90% Indica hybrid

Bred by an unknown breeder, Jelly Breath brings to light what a combination of OG Kush Breath lineage can do with the right genetic crossing. Record high THC levels and a generous Terpene profile have resulted from this magical combination of its widely known parents.



Grower's Information:

Jelly Breath is a relatively low maintenance strain to grow. Plant structure features evenly spaced branching with multiple golf ball size buds and large main colas at the top. Minimal defoliation required at week 3 and week 6. Flexible with environmental conditions and nutrient levels.

A strain of legendary proportions...

Dense green & purple nugs and thick, frosty, crystal white trichomes are but two of the gorgeous features of this elite strain.

Coupled with enormous potential for production and high THC levels will ensure satisfaction for even the most hard to please growers and consumers alike!

Yield:	Heavy
Flower Time:	9 weeks
Height:	Medium
Veg Time:	Standard
THC Range:	29%+
Terpenes:	3.2%+
Dominant Terps:	Farnesene, Limonene, Trans-Caryophyllene, β -Myrcene

Pine Tar Kush



An Old School Classic...

One of the first known strains that defined Cannabis to what it is today, Pine Tar Kush is a classic landrace original.

This strain is well known and has been highly respected over the decades. It features a potent gas aroma and an earthy, pine flavour topped off with record breaking THC potency.



Grower's Information...

Pine Tar Kush is the ideal plant profile. Low maintenance, medium height, standard veg and defoliation requirements all combine to yield an exceptional product without an extensive workload. The key to a quality product with this one is all in the cure!

Back in the Beginning...

If you're looking for the old school, original gas strain then this is the one!

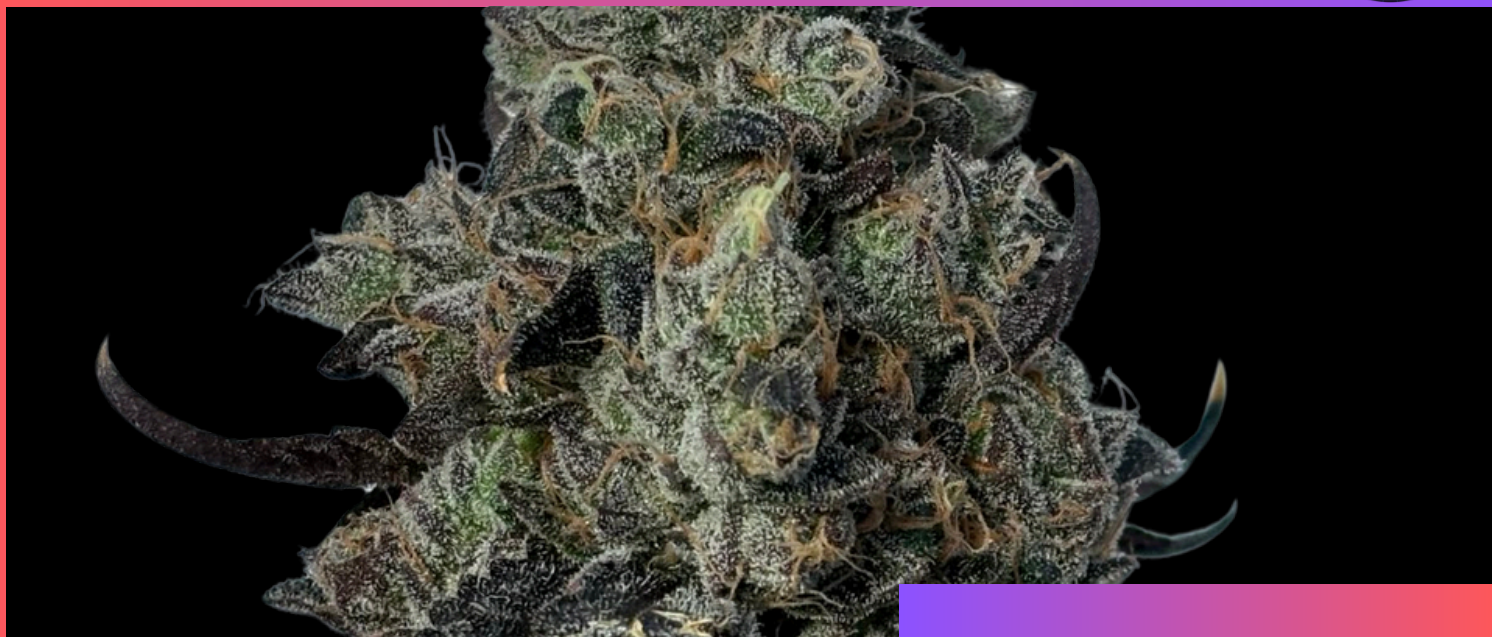
Pine Tar has a remarkable THC content with a gas aroma that sticks to your throat.

It is a heavy hitter, so beware the effects and be prepared to go nowhere after partaking in this tasty, heavy gas

Yield:	Heavy
Flower Time:	9 weeks
Height:	Medium
Veg Time:	Standard
THC Range:	29%+
Terpenes:	3.7%+
Dominant Terps:	β -Caryophellene, β -Myrcene, Limonene, trans-Nerolidol



Sudz



A Bouquet of Flavour...

Discover a Mind-Blowing Cannabis Experience with Sudz! If you're seeking to truly elevate your senses, look no further. This extraordinary creation is the result of meticulous legacy breeding techniques and a deep passion for quality. Get ready to redefine your cannabis journey and embrace the exceptional with Sudz!



Meticulously chosen for the Connoisseur...

Sudz is the result of a meticulously chosen crossing of The Soap (Animal Mints x Kush Mints) and Runtz (Zkittlez x Gelato), combining to form a remarkable varietal that possesses highly unique qualities for the connoisseur market.

With high THC and Terpene profiles, there is enormous commercial potential to bring to market a rare delicacy that is sure to please.



Grower's Information...

Sudz exhibits a more traditional Afghani Kush-like structure with slightly more leaves. The plant responds well to multi-topping and standard defoliation is also advised. Double trellis nettings is also recommended due to the heavy production characteristics of the plant.

Yield:	Heavy
Flower Time:	8.5 - 9 weeks
Height:	Medium
Veg Time:	Standard
THC Range:	27%+
Terpenes:	2.9%+
Dominant Terps:	Caryophyllene, Limonene, Linalool, β -Myrcene



The Real DB

(GML Edition)



A Legacy Mystery...

Everyone has heard of it but there seems to be no definitive answer where it came from...

Recently released from our exclusive legacy reserve this is a legend come back to life.

This strain features dense, sugar coated buds and a heavy gas aroma.



Grower's Information...

Death Bubba is a relatively low maintenance plant with a medium to tall height profile. It ideally suits being a multi-topped bush with evenly spaced branching and internodal spacing. It is highly responsive to the tedious grower and will yield a tremendously tasty product to the conscientious grower.

The Real DB...

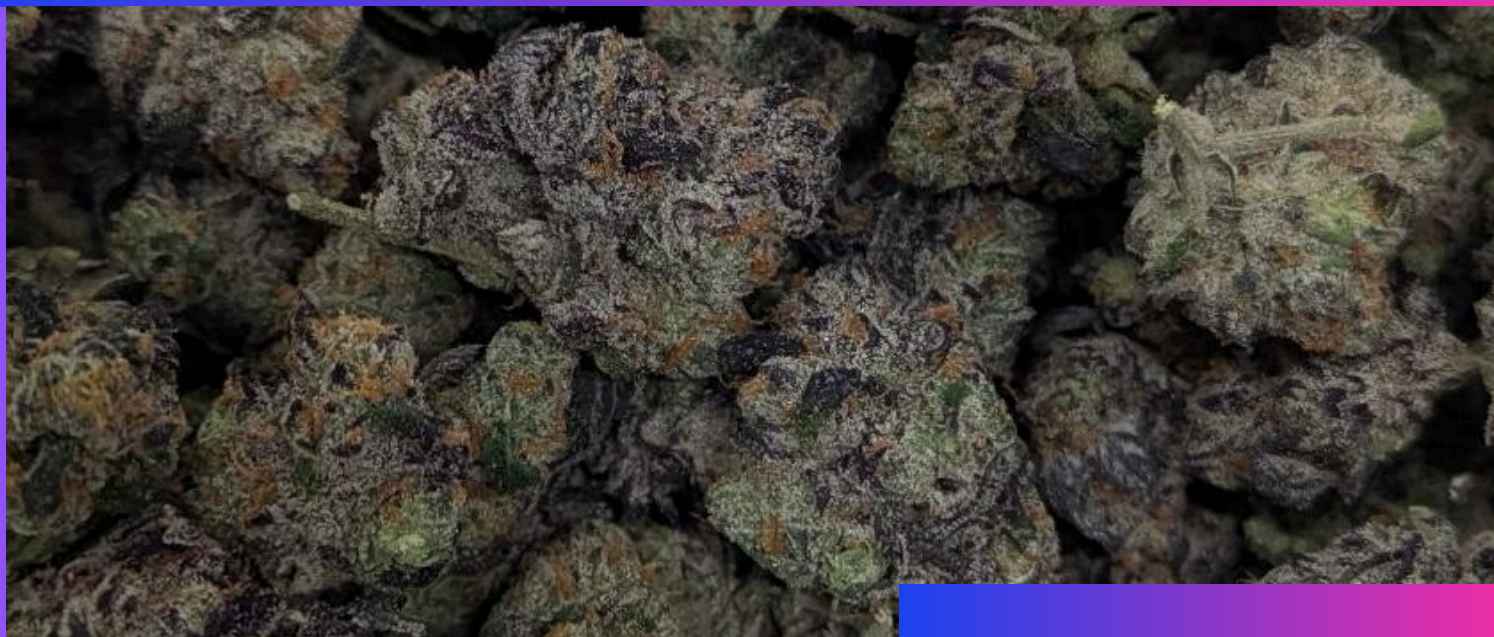
Well known for its heavy hitting, high potency and deep gas nose, The Real Death Bubba (a.k.a. "The Death") is well known to be one of the most powerful hitting strains in the cannabis world.

The finished product is top notch when it comes to visual appeal with an aromatic profile that is next level.

Yield:	Heavy
Flower Time:	9 - 10 weeks
Height:	Medium-Tall
Veg Time:	Standard
THC Range:	29%+
Terpenes:	3.5%+
Dominant Terps:	β -Caryophyllene, D-Limonene, β -Myrcene, α -Bisabolol



Cadillac Rainbows



Take a Ride...

Bred by 3rd Coast Genetics, Cadillac Rainbows is a powerful hybrid featuring an aromatic gas profile with fruity hints.

It doesn't just feature a complex flavour profile but is also known for its social effects, relaxation and feelings of euphoria.



Grower's Information...

Cadillac Rainbows requires moderate maintenance with a medium to tall height profile. It ideally suits being a multi-topped bush with evenly spaced branching and internodal spacing. It is highly responsive to the tedious grower and will yield a tremendously tasty product to the conscientious grower.



All the Colours of the Rainbow...

Rumoured to hit in the mid-high 30's for potency, this is one to be reckoned with. But Cadillac Rainbows isn't just about a heavy hitting THC content, it also features a highly aromatic bouquet and spectacular colours which make it all that much more astounding.

Yield:	Heavy
Flower Time:	9 weeks
Height:	Medium-Tall
Veg Time:	Standard
THC Range:	30%+
Terpenes:	2.5%+
Dominant Terps:	Limonene, Myrcene, Caryophyllene, Linalool

Lindsay OG



A Solid Stand Out...

An OG Kush named after the town of Lindsay, Ontario made it's way into BC over a decade ago. This is a solid OG Kush deriviant well known for delivering heavy potency, high yields and a deep, pungent aroma and flavour.



An OG Kush with a Rich History...

High Level Potency... check
Heavy Yield... check
Knock Out Aroma... check

Lindsay OG stands out and ticks all the boxes for being a heavy hitter with a powerful gas profile.

It is an indica dominant hybrid OG Kush known for its rich terpene profile resulting in an aroma that is earthy, herbal, skunky and spicy with sweet undertones.

Grower's Information...

Lindsay OG is a relatively low maintenance plant with a medium height profile. It ideally suits being a multi-topped bush with evenly spaced branching and internodal spacing.



Yield:	Heavy
Flower Time:	9 weeks
Height:	Medium
Veg Time:	Standard
THC Range:	25-28%
Terpenes:	2.5%+
Dominant Terps:	Caryophyllene, Myrcene, Linalool

Master Kush Ultra



A Mysterious Past...

The MKU genetic was bred from two well known parents - OG Kush and G-13. While the history is surrounded in mystery, there is nothing shady about this character except for when the lights go out after a serious smoke sesh!



There are no secrets...

Rumoured to be derived from a secret government agency program for the use of mental manipulation, there are no secrets when it comes to the fast-acting, powerful euphoric effects of this heavy hitting indica kush.

Be prepared for extremely sticky, dense, pungent flowers that are rewarding in yield, potency and high quality results.



Grower's Information...

MK Ultra is a plant that has standard maintenance and defoliation requirements and features and shorter-medium profile structure. It responds well to a single topping and can be grown in a variety of different cultivation styles.

Yield:	Heavy
Flower Time:	9 weeks
Height:	Medium
Veg Speed:	Moderate
THC Range:	28%+
Terpenes:	2.5%+
Dominant Terps:	Myrcene, Caryophyllene, Limonene

Building Success Through Genetics and Grower Partnerships

At **Life Cycle Botanics**, we recognize that today's cannabis marketplace is more dynamic and competitive than ever before. Success depends on healthy plants, consistent yields, and genetics that help clients stand out. Our mission goes beyond propagation—we empower cultivators with cultivars that open new opportunities and, through our deep industry roots, help strengthen sales connections and long-term growth. Every variety is carefully evaluated through our **Research & Development program**, where we measure vigor, adaptability, aroma, potency, and market appeal. Only genetics that prove themselves in commercial production are released. To help clients make informed decisions, we created the **Grower Sampling Program**. By providing trial quantities of select cultivars, growers can test real-world performance in their own facilities—confirming how a cultivar fits production methods, meets quality standards, and connects with target customers before scaling up. Collaboration is at the heart of this process. We work closely with talented breeders and genetics specialists who share our commitment to excellence. Among them is Heat Hunters Genetics, a fellow Islander whose expertise and innovation help bring forward unique cultivars with real market potential. Our cultivars represent dedication, innovation, and a shared commitment to client success. By combining nursery standards with client feedback, we deliver genetics that inspire confidence in cultivation and spark consumer excitement.



“Rooted in Quality, Growing Your Success”

Current R&D

Autumn 2025



Tiger King

RockstarxGlue Sniffer

50/50 Balanced Hybrid

Yield: Heavy
 Flower Time: 9 weeks +/- 3 days
 Height: Medium - Tall to Tall
 Veg Speed: Moderate
 THC Range: T.B.A.
 Terpenes: T.B.A.
 Dominant Terps: T.B.A.



M7

Mac 1 x Mendo Breath

Sativa Leaning Hybrid

Yield: Heavy
 Flower Time: 9 weeks +/- 3 days
 Height: Tall
 Veg Speed: Fast
 THC Range: T.B.A.
 Terpenes: T.B.A.

Dominant Terps: Limonene, Pinene, Caryophyllene



Gas Tanker

Motor Breath 15x Sour Dub

70/30 Indica Dominant Hybrid

Yield: Heavy 9.5
 Flower Time: weeks
 Height: Medium
 Veg Speed: Moderate
 THC Range: T.B.A.
 Terpenes: T.B.A.

Dominant Terps: Pinene, Limonene, Myrcene

Current R&D – Autumn 2025



Georgia Pie

Gellati xKush Mints

60/40 Indica Dominant Hybrid

Yield: Heavy
 Flower Time: 9.5 weeks
 Height: Tall
 Veg Speed: Fast
 THC Range: T.B.A.
 Terpenes: T.B.A.

Dominant Terps: Caryophyllene, Limonene, Humulene



Jealousy

SherbetBx1xGelato 41

50/50 Balanced Hybrid

Yield: Moderate - Heavy
 Flower Time: 9 weeks +/- 3 days
 Height: Medium - Tall
 Veg Speed: Moderate - Fast
 THC Range: T.B.A.
 Terpenes: T.B.A.

Dominant Terps: Caryophyllene, Limonene, Linalool



Azai

ThinMint GSC x Zuchi

Sativa Dominant Hybrid

Yield: Moderate - Heavy
 Flower Time: 9 weeks +/- 3 days
 Height: Medium - Tall
 Veg Speed: Moderate - Fast
 THC Range: T.B.A.
 Terpenes: T.B.A.

Dominant Terps: Caryophyllene, Limonene, Myrcene

Current R&D – Autumn 2025



Jordanz

Gary Paytonx Runtz

50/50 Balanced Hybrid

Yield: Moderate 8.5
 Flower Time: - 9 weeks
 Height: Medium
 Veg Speed: Moderate
 THC Range: T.B.A.
 Terpenes: T.B.A.

Dominant Terps: Caryophyllene, Limonene, Linalool



Pink Rockstar by REMO

PinkKushx Rockstar

70/30 Indica Dominant Hybrid

Yield: Heavy 9
 Flower Time: weeks
 Height: Medium - Tall
 Veg Speed: Moderate
 THC Range: T.B.A.
 Terpenes: T.B.A.

Dominant Terps: Caryophyllene, Myrcene, Limonene



Pre '98 Bubba by REMO

Landrace Strain

85/15 Indica Dominant Hybrid

Yield: Heavy
 Flower Time: 9 weeks
 Height: Medium
 Veg Speed: Moderate
 THC Range: T.B.A.
 Terpenes: T.B.A.

Dominant Terps: Myrcene, Limonene, Caryophyllene

Current R&D – Autumn 2025



Platinum Pink by REMO

Pink Kushx Unknown

90/10 Indica Dominant Hybrid

Yield: Moderate
 Flower Time: 9 weeks
 Height: Medium
 Veg Speed: Moderate
 THC Range: T.B.A.
 Terpenes: T.B.A.

Dominant Terps: Caryophyllene, Limonene, Myrcene



Gas Basket

Gary Payton x Bakers Dozen

70/30 Indica Dominant Hybrid

Yield: Moderate - Heavy
 Flower Time: 8 - 9 weeks
 Height: Medium
 Veg Speed: Moderate
 THC Range: T.B.A.
 Terpenes: T.B.A.

Dominant Terps: Caryophyllene, Limonene, Myrcene



Guwop Green

Pinana x Eye Candy

60/40 Indica Dominant Hybrid

Yield: Moderate - Heavy
 Flower Time: 8 - 9 weeks
 Height: Medium
 Veg Speed: Moderate
 THC Range: T.B.A.
 Terpenes: T.B.A.

Dominant Terps: T.B.A.

Current R&D – Autumn 2025



Goofiez

Jokerz xApples & Bananas

50/50 Balanced Hybrid

Yield: Moderate
 Flower Time: 9 weeks
 Height: Medium
 Veg Speed: Moderate
 THC Range: T.B.A.
 Terpenes: T.B.A.

Dominant Terps: Caryophyllene, Linalool, Limonene



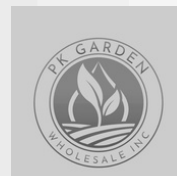
White Widow

BrazilianSativaxSouth Indian Indica

60/40 Sativa Dominant Hybrid

Yield: Heavy 8-9
 Flower Time: weeks
 Height: Medium
 Veg Speed: Moderate
 THC Range: T.B.A.
 Terpenes: T.B.A.

Dominant Terps: Myrcene, Caryophyllene, Limonene



Pre-Start program



Pre-Start plants...

Get a head start with one of our Pre-Starts! These plants are brought to the next level as a second stage between clone and full veg. They are ready to transplant into your ideal growing medium and kick to flower in as little as 2-3 days.

Choose your strain, choose your medium, choose your style & let us do the work for you!



Limitless options...

Our pre-start program is catered to your specific needs, pick your options and away we grow!

Specifications:

- 3" square coco block or choose your media
- 10-14" plant height
- 14-18 day veg
- Single or double topped
- Complete IPM program
- Pest & Pathogen free ✓

Efficiency is the name of the game...

At Life Cycle Botanics, we understand the necessity to be as efficient as possible at all times - and how better to increase efficiency than by reducing your vegetative times. Our dedicated Pre-Veg program allows clients to reserve space and let our team take care of the starting work for you! Our Pre-Start plant option is ideal for those seeking maximum efficiency while allowing you to custom veg your plant in its final stages before kicking it into flower. We also offer custom options to suit your particular needs, reducing your veg time and sometimes eliminating it all together depending on your growing setup. Ask one of us for more details and we will customize and all inclusive pricing plan!

Phenotyping services



Phenotyping cannabis: the key to growing high-quality strains 🌿🔍

Are you looking to grow cannabis strains that produce consistent, high-quality buds? Phenotyping might be the answer! By observing and analyzing the physical characteristics of cannabis plants, growers can identify and select the plants with the most desirable traits, such as potency, flavor, and aroma. Phenotyping involves closely examining the plant's structure, including its height, branch pattern, leaf shape, and flower size. By selecting and breeding the plants with the most desirable traits, growers can create new strains or stabilize existing ones. So if you're looking to take your cannabis cultivation to the next level, consider phenotyping your plants! Who knows, you might just discover the next big thing in the world of weed!

Life Cycle Botanics is excited to announce that we are now taking reservations for pheno hunting YOUR strains for YOU! Contact us now to discuss starting your next phenotyping project dedicated exclusively to you by emailing info@lifecyclebotanics.com. Space is limited to enquire today!



Genetic Housing



Have your own genetics?

Do you house your own mother plants or have genetics you want to mother up but don't have the space? We have the ideal solution... let us house your genetics for you and either keep it in storage so it's ready to put in production as quickly as possible or keep an ongoing supply so you can focus on the growing while we focus on the cloning.



Genetic Housing

Our genetic housing program allows you to safely put your favourite genetics away without the worry of having to maintain them yourself. We perform continuous ongoing testing, regular IPM and plant maintenance and keep you informed the entire time.



Focus on the the growing with our Genetic Supply Agreement...

Our genetic supply agreement allows you to put your entire focus on the growing, therefore giving you the greatest potential to achieve your maximum desired results. We can house mother stock for your requirement, work out your schedule with you and have plants delivered to your doorstep, on time and with our quality guarantee. This service includes ongoing pathogen testing, our stringent IPM program and a heavy focus on plant health & maintenance.

Ask us about our custom supply agreements for more information!

Research & Development



Research & Development – the key to future market success...

The research and development of genetics is crucial for the future success of producers in the Canadian cannabis market. By understanding more about the characteristics and results of cannabis strains, cultivators can grow plants with specific, desirable traits such as higher cannabinoid content, disease resistance, and improved yield.

Our Research & Development division works tirelessly on new genetics and identifies key characteristics, such as THC and CBD levels, terpene profiles, growing characteristics, yields and flowering times. This precision research not only enhances our own understanding of these genetics but also ensures consistency and reliability, which in turn allows us to give you the right advice.

Moreover, developing resilient and high-yielding strains can significantly reduce production costs and negative impact, making the industry more sustainable. As the market grows, the ability to offer unique and superior products will distinguish leading companies from their competitors.

In summary, the continuous investment in cannabis genetics research is vital for innovation, product differentiation, and sustainability in the cannabis industry, driving long-term market success and consumer satisfaction.





Vancouver Island
British Columbia

About Us...

At Life Cycle Botanics...

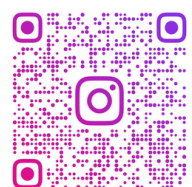
We believe that a strong start is the best method to achieve a successful outcome. Our nursery, based on Vancouver Island, BC, specializes in high quality clone production with a heavy focus on delivering a vigorous product that has a strong root mass and is pest and pathogen free. All our mother plants are routinely tested for HLVd and test results may be supplied on request anytime. With every order we also send along information on our environmental conditions and IPM. We offer ongoing grower support should you have any questions during the vegetative and flowering cycles of any of our cultivars.

In addition to our clones we offer several other services including pre-start plants, phenotyping, exclusive strain housing and a reserve strain bank – ideal if you have a genetic that you want to hold but nowhere to keep it safe – all of which is run through our stringent IPM and testing program for safe keeping, letting you rest assured that your genetics are in good hands.

In addition to our current strains in production and upcoming releases we are always running strains through our research & development program. Whether this be part of our in-house phenotyping process for the latest, greatest genetic or the rebirth of an old-world classic, we continue to try to bring the cleanest, highest quality genetics to our clients to give you the market advantage you need.

At Life Cycle Botanics, we want to see you succeed.

For more information, contact info@lifecyclebotanics.com



LIFECYCLEBOTANICS

www.lifecyclebotanics.com