



Strain Catalogue

Spring/Summer 2024

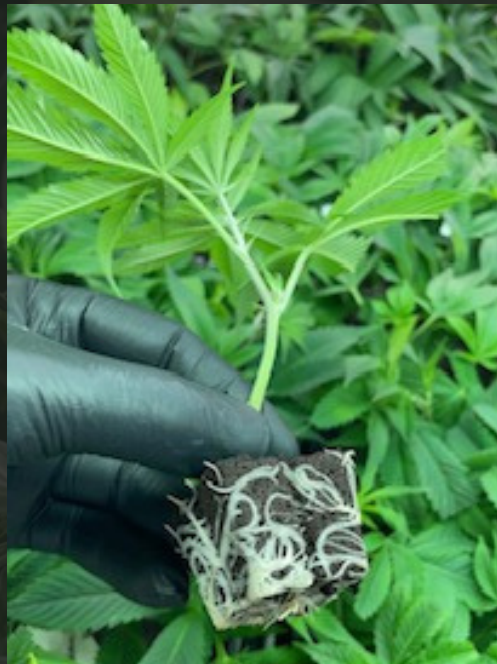


TABLE OF CONTENTS

SATIVA DOMINANT / EXOTIC

FAST ORANGE 3

50/50 Exotic Hybrid (Sativa Leaning)
Zkittlez x OG Eddy Lepp

RUNTZ 4

50/50 Exotic Hybrid
Zkittlez x Gelato

SUDZ 5

50/50 Exotic Hybrid (Indica Leaning)
Sour Apples x Animal Cookies

INDICA DOMINANT / GAS

AV GAS 6

Indica Dominant Hybrid
HH Secret Sauce x Apples n' Bananas

GASTRO POP 7

Indica Dominant Hybrid/Exotic Gas
Grape Gas x Apples n' Bananas

JELLY BREATH 8

Indica Dominant
Mendo Breath x Do-si-dos

PINE TAR KUSH 9

Pure Indica
Original Landrace Strain

THE REAL DB 10

Heavy Indica
Unknown Lineage

NEW RELEASES FOR 2024

BLACKOUT BOBBY 11

Indica Dominant / Gas
Gelato x Rainbow Chip

LCB ISLAND PINK KUSH 12

Indica Dominant / Gas
OG Kush descendant

PT LEMON CHERRY GELATO 13

Indica Dominant Exotic Gas
Thin Mint Girl Scout Cookies x Lemon Haze

TROPICAL CHERRY 14

Indica Dominant / Gas
Tropical Cookies x Cherry Cookies

MORE INFORMATION...

PRE-START PLANTS 15

PHENOTYPING SERVICES 16

GENETIC HOUSING & SUPPLY 17

RESEARCH & DEVELOPMENT 18

ABOUT US 19

Fast Orange



Extraordinary Citrus...

Discover the ultimate revolution in cannabis strains with the zesty citrus aroma of freshly peeled oranges mixed with an old school gassy undertone. Also known as Stinky Mary, Fast Orange is an experience for the senses basting a tangy aroma and rich cannabinoid profile, providing an ideal choice for both new and seasoned cannabis enthusiasts.



Old School Aroma with a New Age Flavour...

Whether you're a seasoned connoisseur or new to the world of cannabis, Fast Orange is a must-try. It's not just a strain; it's a journey of sensory delight, a perfect blend of energy and serenity. Get ready to indulge in a whole new level of cannabis experience as Fast Orange transforms your moments into unforgettable memories. Try it today and elevate your cannabis journey to a whole new level!



Grower's Information...

Fast Orange is a medium maintenance, standard profile plant that requires a little more attention but provides an amazing result. Cultivated with care and precision, Fast Orange boasts a rich profile of terpenes with densely packed trichomes exuding a vibrant, citrusy scent.

Yield:	Moderate
Flower Time:	8.8.5 weeks
Height:	Medium
Veg Time:	Moderate
THC Range:	26%+
Terpenes:	
Dominant Terps:	

White Runtz



50/50 hybrid

This highly sought after cultivar was phenotyped in house to produce possibly the best version of this cultivar available on the market today. An exotic lineage of the very well known Zkittlez and Gelato strains, White Runtz ticks all the boxes for production, colours, potency and taste.



Grower's Information:

White Runtz is an aggressive and very hearty strain. Most growers recommend pinching at a very early stage in veg and sometimes even a second time if running a full 21 days before transitioning the plant into flower. Plant structure features long arms with a heavy focus on flower size at the end of every branch.

Runtz is the name, beast is the strain...

If what you're looking for is enormous "Wow" potential then this is the one for you! White Runtz has record breaking THC and Terpene potential, a whopper for production capability and beautiful colours, aromas and taste. This is a market favourite that is sure to please even the most hard to please growers and consumers alike!

Yield:	Heavy
Flower Time:	8 weeks
Height:	Tall
Veg Time:	Fast
THC Range:	25-28%
Terpenes:	4.1%+
Dominant Terps:	Limonene, β -Caryophyllene, α -Pinene, α -Humulene

Sudz



A Bouquet of Flavour...

Discover a Mind-Blowing Cannabis Experience with Sudz! If you're seeking to truly elevate your senses, look no further. This extraordinary creation is the result of meticulous legacy breeding techniques and a deep passion for quality. Get ready to redefine your cannabis journey and embrace the exceptional with Sudz!



Grower's Information...

Sudz exhibits a more traditional Afghani Kush-like structure with slightly more leaves. The plant responds well to multi-topping and standard defoliation is also advised. Double trellis nettings is also recommended due to the heavy production characteristics of the plant.

Meticulously chosen for the Connoisseur...

Sudz is the result of a meticulously chosen crossing of The Soap (Animal Mints x Kush Mints) and Runtz (Zkittlez x Gelato), combining to form a remarkable varietal that possesses highly unique qualities for the connoisseur market.

With high THC and Terpene profiles, there is enormous commercial potential to bring to market a rare delicacy that is sure to please.

Yield:	Heavy
Flower Time:	8.5-9 weeks
Height:	Medium
Veg Time:	Standard
THC Range:	26%+
Terpenes:	
Dominant Terps:	



LIFE CYCLE BOTANICS

PRESENTS...

HEAT HUNTERS EDITION



Phylogeny and Trait map by Heat Hunters Genetics

	<p>Secret Sauce (HH secret sauce)</p> <ul style="list-style-type: none"> • ??? 	<p>Apples n' Bananas (Now N Later x Jet Fuel Gelato)</p> <ul style="list-style-type: none"> • Apple, fruity, gas terps • Vigorous growth pattern in any garden • High Yield • Covered with deep purple resin coated sugar leaves 	
--	--	---	--

AV GAS

	<ul style="list-style-type: none"> • Varietal Type: Indica dominant hybrid • THC Range: 28% + • Aroma: gas dominant with hints of zkitkeez and exotic fruit • Taste: very gassy and slightly fruity, pungent flavour profile • Dominant terpenes: Myrcene, Caryophyllene and Linalool • Smoke quality: Full bodied thick dank smoke • Reported effects: Stress relief, deep relaxation and feeling of calmness • Flowering: 8.5 - 9 weeks • Yield: High 	
--	--	--

LIFE CYCLE BOTANICS

PRESENTS...

HEAT HUNTERS EDITION



Phylogeny and Trait map by Heat Hunters Genetics



Grape Gas

(Grape Pie x Jet Fel Gelato)

- Pungent Grape terps laced with strong petrol notes.
- High THC
- Strong natural resilience and excellent bud structure
- Slightly purple tinted flowers

Apples n' Bananas

(Now N Later x Jet Fuel Gelato)

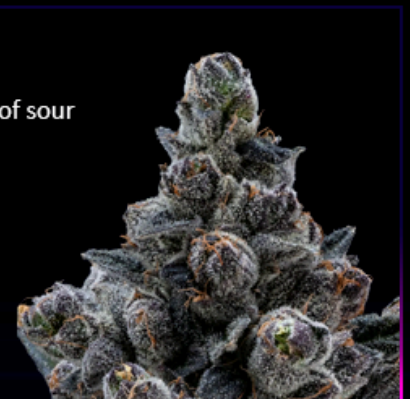
- Apple, fruity, gas terps
- Vigorous growth pattern in any garden
- High Yield
- Covered with deep purple resin coated sugar leaves



GASTROPOP



- Varietal Type: Indica Dominant Hybrid
- THC Range: 27% +
- Aroma: Sweet berry grape overtone accented by a bouquet of sour citrus, tangy apples and rich spicy diesel
- Taste: super sweet, gassy, sugary berry grapes
- Terpenes: B-Caryophyllene, Limonene, Linalool
- Smoke quality: Extremely flavourful and smooth
- Reported effects: Uplifting, happy, euphoric and outgoing
- Flowering: 8.5 - 9 weeks
- Yield: High
- Height: Tall



Jelly Breath



90% Indica hybrid

Bred by an unknown breeder, Jelly Breath brings to light what a combination of OG Kush Breath lineage can do with the right genetic crossing. Record high THC levels and a generous Terpene profile have resulted from this magical combination of its widely known parents.



Grower's Information:

Jelly Breath is a relatively low maintenance strain to grow. Plant structure features evenly spaced branching with multiple golf ball size buds and large main colas at the top. Minimal defoliation required at week 3 and week 6. Flexible with environmental conditions and nutrient levels.

A strain of legendary proportions...

Dense green & purple nugs and thick, frosty, crystal white trichomes are but two of the gorgeous features of this elite strain.

Coupled with enormous potential for production and high THC levels will ensure satisfaction for even the most hard to please growers and consumers alike!

Yield:	Heavy
Flower Time:	9 weeks
Height:	Medium
Veg Time:	Standard
THC Range:	29%+
Terpenes:	3.2%+
Dominant Terps:	Farnesene, Limonene, Trans-Caryophyllene, β - Myrcene

Pine Tar Kush



An Old School Classic...

One of the first known strains that defined Cannabis to what it is today, Pine Tar Kush is a classic landrace original.

This strain is well known and has been highly respected over the decades. It features a potent gas aroma and an earthy, pine flavour topped off with record breaking THC potency.



Grower's Information...

Pine Tar Kush is the ideal plant profile. Low maintenance, medium height, standard veg and defoliation requirements all combine to yield an exceptional product without an extensive workload. The key to a quality product with this one is all in the cure!



Back in the Beginning...

If you're looking for the old school, original gas strain then this is the one!

Pine Tar has a remarkable THC content with a gas aroma that sticks to your throat.

It is a heavy hitter, so beware the effects and be prepared to go nowhere after partaking in this tasty, heavy gas

Yield:	Heavy
Flower Time:	9 weeks
Height:	Medium
Veg Time:	Standard
THC Range:	29%+
Terpenes:	3.7%+
Dominant Terps:	β -Caryophellene, β -Myrcene, Limonene, trans-Nerolidol

The Real DB



A Legacy Mystery...

Everyone has heard of it but there seem to be no definitive answer where it came from...

Recently released from our exclusive legacy reserve this is a legend come back to life.

This strain features dense, sugar coated buds and a heavy gas aroma.



Grower's Information...

Death Bubba is a relatively low maintenance plant with a medium to tall height profile. It ideally suits being a multi-topped bush with evenly spaced branching and internodal spacing. It is highly responsive to the tedious grower and will yield a tremendously tasty product to the conscientious grower.



The Real DB...

Well known for its heavy hitting, high potency and deep gas nose, The Real Death Bubba (a.k.a. "The Death") is well known to be one of the most powerful hitting strains in the cannabis world.

The finished product is top notch when it comes to visual appeal with an aromatic profile that is next level.

Yield:	Heavy
Flower Time:	9-10 weeks
Height:	Medium-Tall
Veg Time:	Standard
THC Range:	29%+
Terpenes:	3.5%+
Dominant Terps:	β -Caryophyllene, D-Limonene, β -Myrcene, α -Bisabolol

Blackout Bobby



Bobby gonna knock you out...

It's all in the name... Blackout Bobby is one to remember (or not remember) when it comes to heavy hitters as this might be the king of them all.

This strain features dense, sugar coated buds and flavours reminiscent of sweet cream, spice, pine and earth.



Grower's Information...

Blackout Bobby is a relatively low maintenance plant with a medium to tall height profile. It ideally suits being a multi-topped bush with evenly spaced branching and internodal spacing. It is highly responsive to the tedious grower and will yield a tremendously tasty product to the conscientious grower.



A Knockout Level Indica...

Described by some consumers as an "explosion of flavour with every puff," Blackout Bobby is true to its namesake when it comes to both taste and effect.

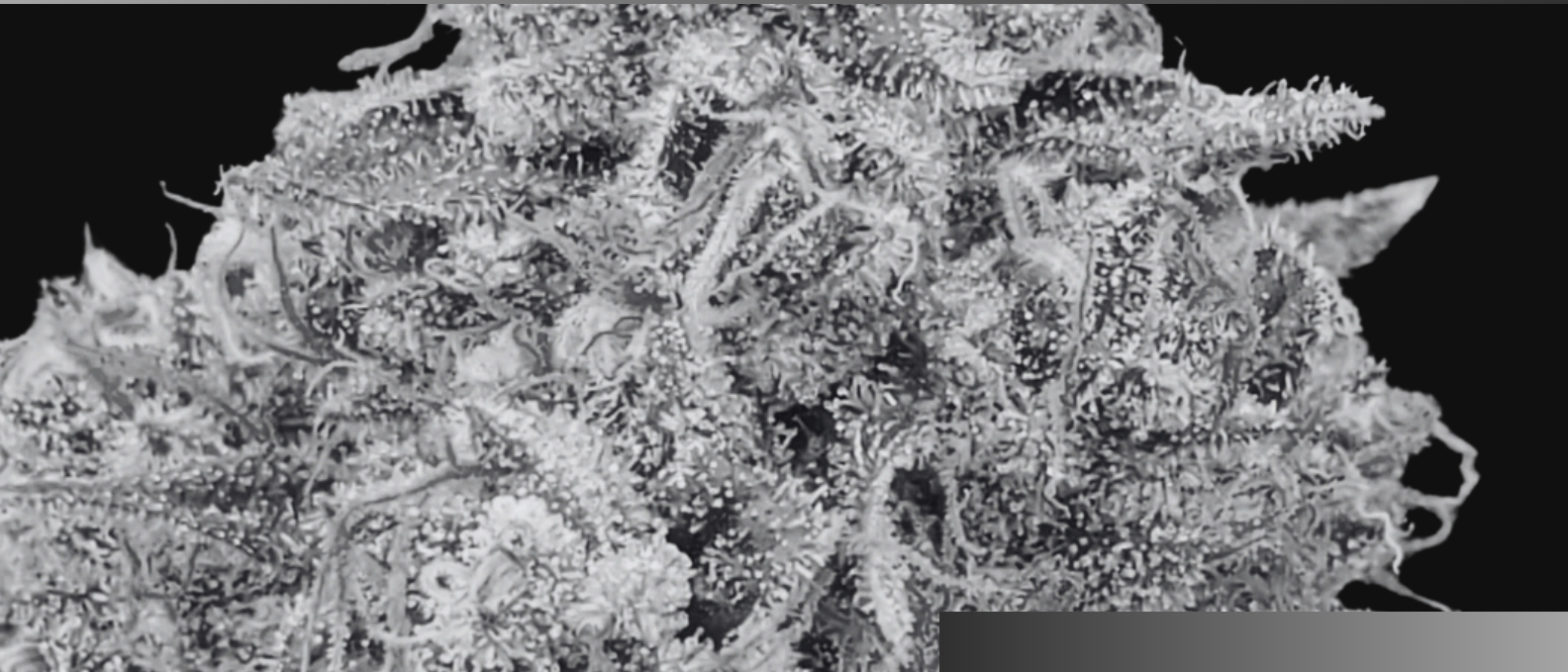
The finished product is top notch when it comes to visual appeal with an aromatic profile that is next level.

Prepare to be knocked into a whole new dimension!

Yield:	Heavy
Flower Time:	8.5 weeks
Height:	Medium
Veg Time:	Standard
THC Range:	26%+
Terpenes:	
Dominant Terps:	

Island Pink Kush

(LCB Edition)



An LCB Phenotype...

Sourced from the Legacy era, this is an exclusive phenotype brought to life by the Life Cycle Botanics Research & Development team. True to its well known name this is an original heavy gas strain that'll remind you of hotboxing bathrooms and basement chronic smoke fests!



Grower's Information...

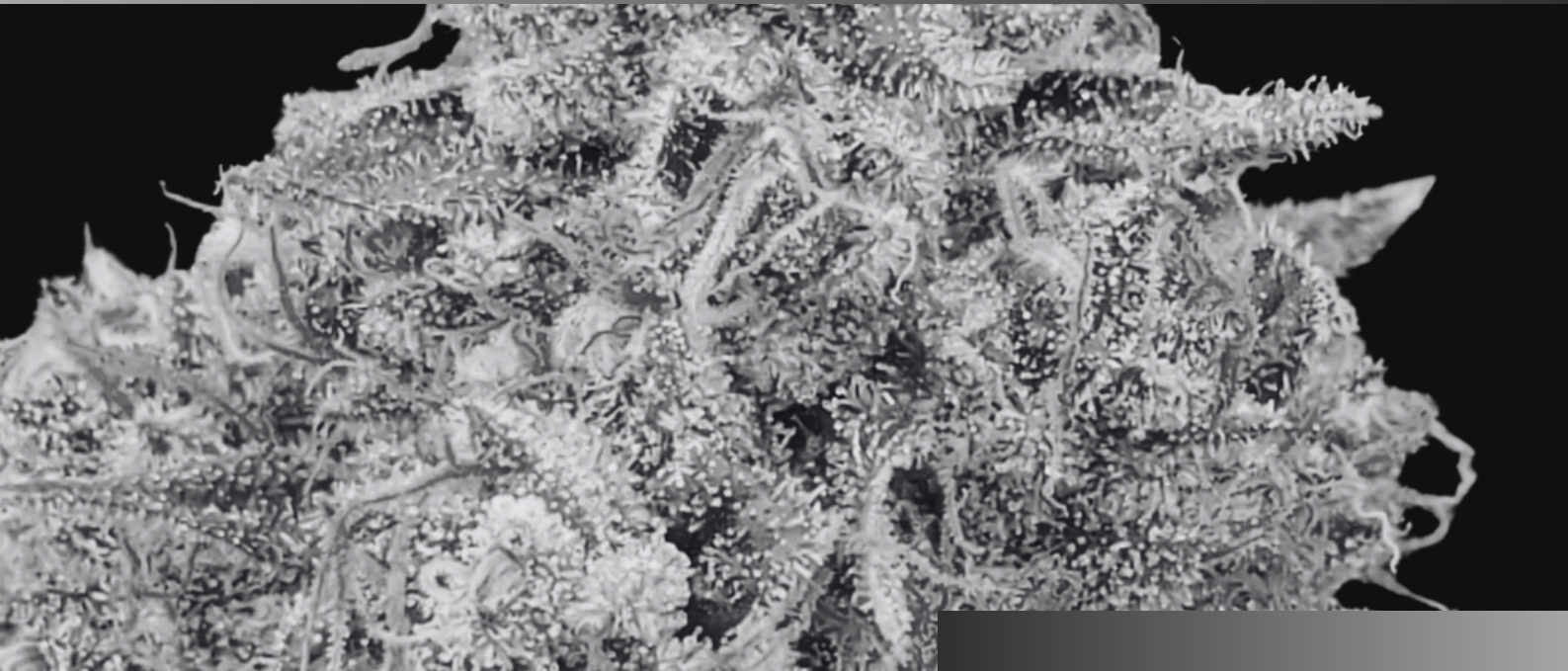
Island Pink is a low maintenance, standard profile plant that requires a modest amount attention but provides an amazing result. It responds extremely well to a single topping and can be grown in a variety of different cultivation styles. Rewarding are the results to the astute grower!

The Old School Original...

MORE INFORMATION COMING SOON...

Yield:	Heavy
Flower Time:	9 weeks
Height:	Medium-Tall
Veg Time:	Moderate
THC Range:	27%+
Terpenes:	
Dominant Terps:	

Platinum Lemon Cherry Gelato



More Information...

COMING SOON...



Platinum Lemon Cherry Gelato...

MORE INFORMATION COMING SOON...

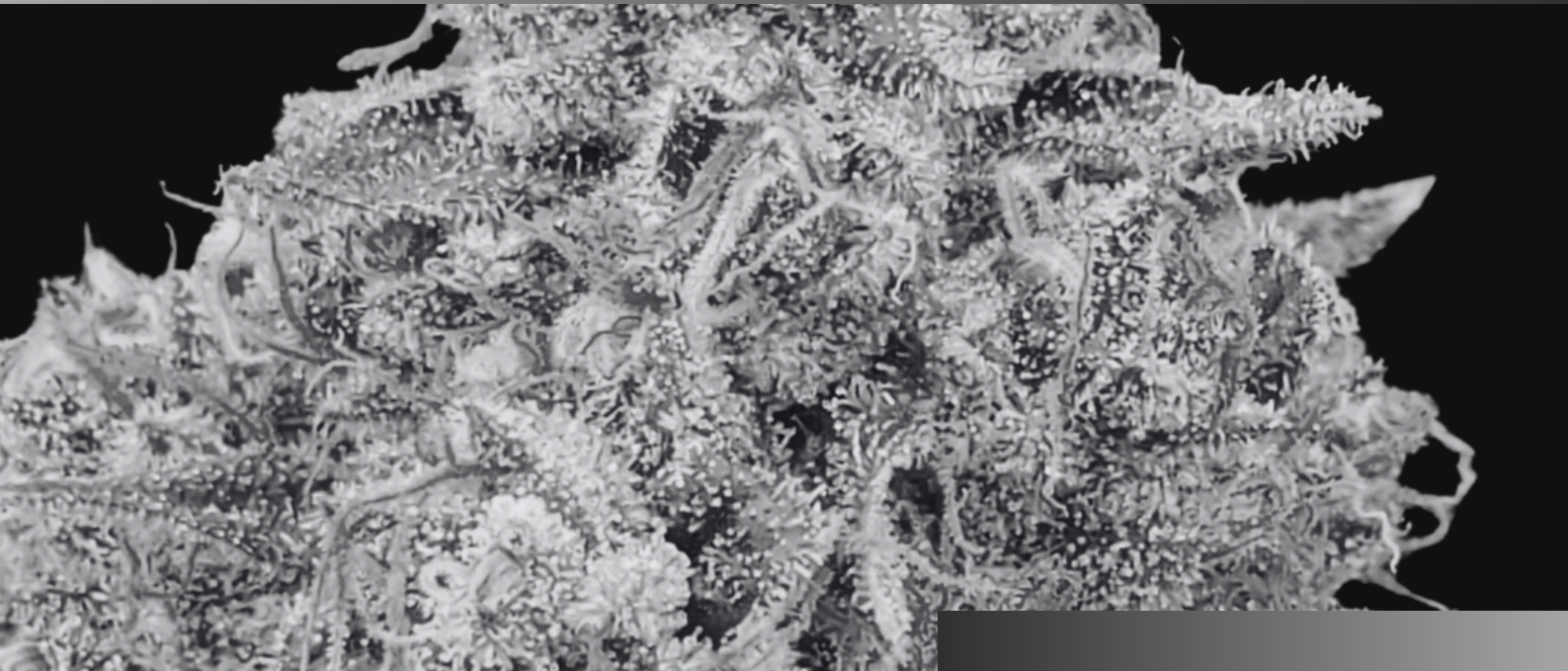


Grower's Information...

COMING SOON...

Yield:	Moderate
Flower Time:	8.8.5 weeks
Height:	Medium
Veg Time:	Moderate
THC Range:	T.B.A.
Terpenes:	
Dominant Terps:	

Tropical Cherry



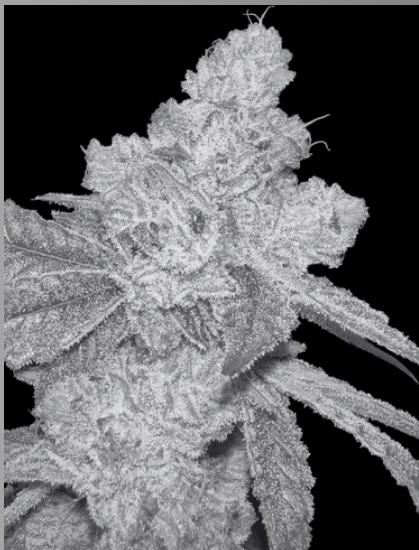
More Information...

COMING SOON...



Grower's Information...

COMING SOON...



Tropical Cherry...

MORE INFORMATION COMING SOON...

Yield:	Moderate
Flower Time:	8.8.5 weeks
Height:	Medium
Veg Time:	Moderate
THC Range:	26%+
Terpenes:	
Dominant Terps:	

Pre-Start program



Pre-Start plants...

Get a head start with one of our Pre-Starts! These plants are brought to the next level as a second stage between clone and full veg. They are ready to transplant into your ideal growing medium and kick to flower in as little as 2-3 days.

Choose your strain, choose your medium, choose your style & let us do the work for you!



Limitless options...

Our pre-start program is catered to your specific needs, pick your options and away we grow!

Specifications:

- 3" square coco block or choose your media
- 10-14" plant height
- 14-18 day veg
- Single or double topped
- Complete IPM program
- Pest & Pathogen free ✓



Efficiency is the name of the game...

At Life Cycle Botanics, we understand the necessity to be as efficient as possible at all times - and how better to increase efficiency than by reducing your vegetative times. Our dedicated Pre-Veg program allows clients to reserve space and let our team take care of the starting work for you! Our Pre-Start plant option is ideal for those seeking maximum efficiency while allowing you to custom veg your plant in its final stages before kicking it into flower. We also offer custom options to suit your particular needs, reducing your veg time and sometimes eliminating it all together depending on your growing setup. Ask one of us for more details and we will customize and all inclusive pricing plan!

Phenotyping services



Phenotyping cannabis: the key to growing high-quality strains

Are you looking to grow cannabis strains that produce consistent, high-quality buds? Phenotyping might be the answer! By observing and analyzing the physical characteristics of cannabis plants, growers can identify and select the plants with the most desirable traits, such as potency, flavor, and aroma. Phenotyping involves closely examining the plant's structure, including its height, branch pattern, leaf shape, and flower size. By selecting and breeding the plants with the most desirable traits, growers can create new strains or stabilize existing ones. So if you're looking to take your cannabis cultivation to the next level, consider phenotyping your plants! Who knows, you might just discover the next big thing in the world of weed!

Life Cycle Botanics is excited to announce that we are now taking reservations for pheno hunting YOUR strains for YOU! Contact us now to discuss starting your next phenotyping project dedicated exclusively to you by emailing info@lifecyclebotanics.com. Space is limited to enquire today!



Genetic Housing



Have your own genetics?

Do you house your own mother plants or have genetics you want to mother up but don't have the space? We have the ideal solution... let us house your genetics for you and either keep it in storage so it's ready to put in production as quickly as possible or keep an ongoing supply so you can focus on the growing while we focus on the cloning.



Genetic Housing

Our genetic housing program allows you to safely put your favourite genetics away without the worry of having to maintain them yourself. We perform continuous ongoing testing, regular IPM and plant maintenance and keep you informed the entire time.



Focus on the the growing with our Genetic Supply Agreement...

Our genetic supply agreement allows you to put your entire focus on the growing, therefore giving you the greatest potential to achieve your maximum desired results. We can house mother stock for your requirement, work out your schedule with you and have plants delivered to your doorstep, on time and with our quality guarantee. This service includes ongoing pathogen testing, our stringent IPM program and a heavy focus on plant health & maintenance.

Ask us about our custom supply agreements for more information!

Research & Development



Research & Development – the key to future market success...

The research and development of genetics is crucial for the future success of producers in the Canadian cannabis market. By understanding more about the characteristics and results of cannabis strains, cultivators can grow plants with specific, desirable traits such as higher cannabinoid content, disease resistance, and improved yield.

Our Research & Development division works tirelessly on new genetics and identifies key characteristics, such as THC and CBD levels, terpene profiles, growing characteristics, yields and flowering times. This precision research not only enhances our own understanding of these genetics but also ensures consistency and reliability, which in turn allows us to give you the right advice.

Moreover, developing resilient and high-yielding strains can significantly reduce production costs and negative impact, making the industry more sustainable. As the market grows, the ability to offer unique and superior products will distinguish leading companies from their competitors.

In summary, the continuous investment in cannabis genetics research is vital for innovation, product differentiation, and sustainability in the cannabis industry, driving long-term market success and consumer satisfaction.

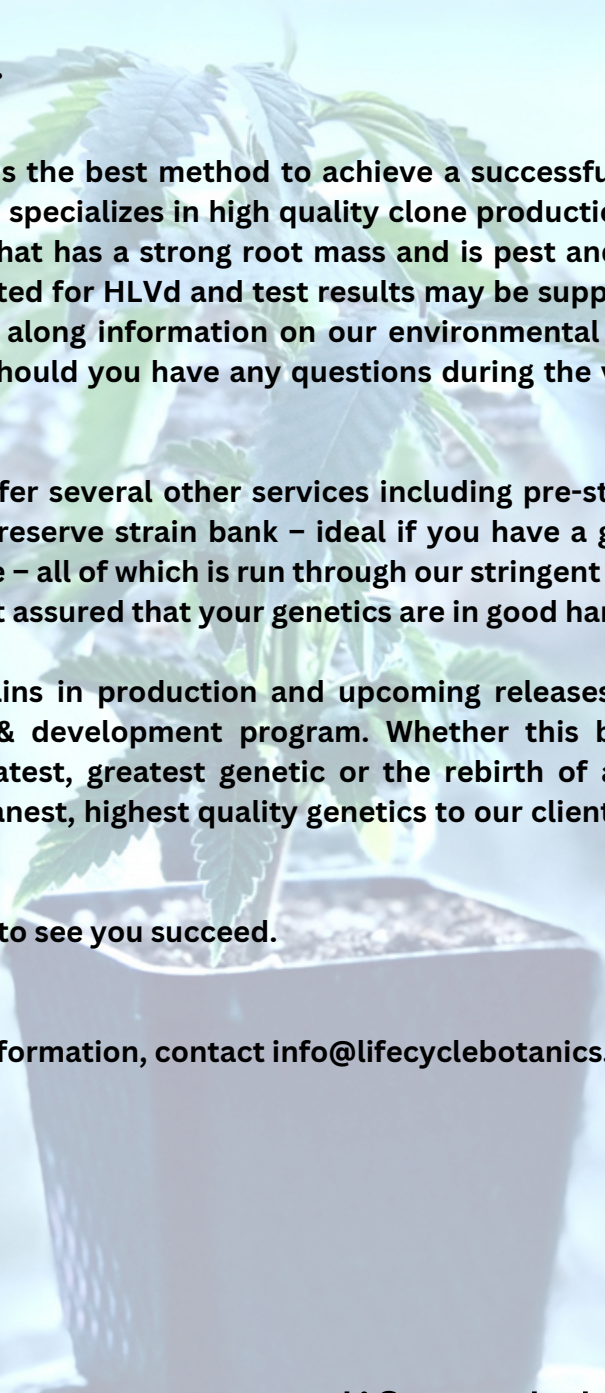




Vancouver Island
British Columbia

About Us...

At Life Cycle Botanics...



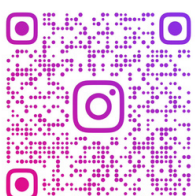
We believe that a strong start is the best method to achieve a successful outcome. Our nursery, based on Vancouver Island, BC, specializes in high quality clone production with a heavy focus on delivering a vigorous product that has a strong root mass and is pest and pathogen free. All our mother plants are routinely tested for HLVd and test results may be supplied on request anytime. With every order we also send along information on our environmental conditions and IPM. We offer ongoing grower support should you have any questions during the vegetative and flowering cycles of any of our cultivars.

In addition to our clones we offer several other services including pre-start plants, phenotyping, exclusive strain housing and a reserve strain bank – ideal if you have a genetic that you want to hold but nowhere to keep it safe – all of which is run through our stringent IPM and testing program for safe keeping, letting you rest assured that your genetics are in good hands.

In addition to our current strains in production and upcoming releases we are always running strains through our research & development program. Whether this be part of our in-house phenotyping process for the latest, greatest genetic or the rebirth of an old-world classic, we continue to try to bring the cleanest, highest quality genetics to our clients to give you the market advantage you need.

At Life Cycle Botanics, we want to see you succeed.

For more information, contact info@lifecyclebotanics.com



LIFECYCLEBOTANICS

www.lifecyclebotanics.com