

URBAN Alma Pro L



**INTELLIGENT AND
MODERN LAMB FEEDING**

Our inspiration is and always will be nature.

Get ready for a new era of efficiency and care! Our highly modern automatic lamb feeder, the Alma Pro L, makes the demanding and time-consuming task of lamb rearing child's play. Our innovative feeder combines reliable feeding and advanced animal health management.

Be part of the lamb rearing revolution with the Alma Pro L!

Our innovative feeder combines reliable feeding and advanced animal health management. Each lamb gets exactly the amount of milk that they need for optimal growth – perfectly coordinated and available at any time!

Just imagine how well your lambs could do if they get exactly the right of milk they need. Not only does this give the lambs the best opportunities for development, but it also helps to ensure a harmonious growth of the entire group.

Our system facilitates the individual monitoring of all animals in the flock. How many portions has each lamb consumed? What temperature is the milk at? Are all my lambs healthy and happy? You can check all this information whenever you want!

Give your lambs the best and make your job easier with the Alma Pro L – it's more than just an automatic feeder, it's the linchpin of a successful lamb rearing strategy.





Flexible Automatic Convenient



Needs-based, automated feeding

For optimal lamb development, it is best to feed the animals small quantities of milk several times a day. The Alma Pro L is the convenient solution: Your lambs get the milk that they need at a constant temperature and with the same concentration all day long. This helps to noticeably ease your and your team's workload, while your lambs develop optimally.



Individual health management

With the Alma Pro L, you can check and evaluate the health status of your lambs whenever you want. You can even retrieve the data you need in a clear display and intervene immediately if there is a problem. The compact design and fully automatic cleaning programme ensures flawless food hygiene and protects the health of your lambs.



Why you should opt for an automatic feeding system



"We know how time-consuming it can be to manually clean feeding systems. But having an optimal barn hygiene is the basic requirement for healthy lambs. The URBAN Alma Pro L takes on some of this workload."

Martin Lüllmann, Head of Development

Noticeably reduced workload and full control

Your valuable time is very important to us. Thanks to our Alma Pro L, you can forget all about annoying jobs like transporting buckets, rinsing containers and stirring drinks. Use your newly freed up time for other important tasks but still maintain full control of all work steps.

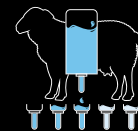
A member of the team for any eventuality

The Alma Pro L is your perfect partner for any situation as it can be used with both small and large herds. One feeder can feed up to eight lambs at the same time. A single control panel can control up to four feeders and 32 feeding stations, all while monitoring the individual animals at the same time.

The advantages of the URBAN Alma Pro L:



Round-the-clock, species-appropriate feeding



Natural portion sizes



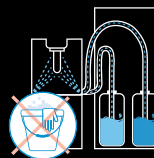
Continuous health monitoring



Constant milk temperature



Consistent milk concentration

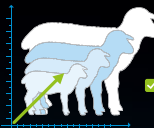


Optimal hygiene during feeding



Time and materials saved when compared with ad libitum feeding

You can find more information about this on Page 19



Improved growth rate



Structure and function

Robust construction and low-maintenance operation

- 1 **Control panel** with touchscreen
- 2 **Storage container** that can hold up to 35 kg of milk powder
- 3 **Powder auger** for a consistently precise dosing of the milk powder
- 4 **Water connection**
- 5 **Boiler / Heat exchanger**
- 6 **Temperature sensors** that ensure the milk remains at a constant temperature
- 7 **Cleaning agents** for the fully automatic cleaning

- 8 **Milk tap** for easy milk dispensing
- 9 **Heated mixing container**
- 10 **Mixing container float** for measuring the quantity of milk dispensed down to the millimetre

- 11 **Ring line** that carries the milk to the teat. The regular, temperature-controlled circulation between the teat and mixing container ensures that the milk always stays warm and prevents the line from freezing during cold weather
- 12 **Double lamb station** – up to four feeding stations for two lambs can be operated with just one automatic feeder. Both the width of the station and the height of the neck rail and teat can be easily adjusted.
- 13 **Station valve**

14* **Whole milk feeding (*optional)** The feeder can even be used to feed animals whole milk or a mix of whole milk and milk powder without any problems. The proportion of whole milk can be adjusted within a range between 0% to 100%. The **URBAN MilkShuttle** can be used to supply automatic feeders with whole milk.



URBAN Alma Pro L Automatic Feeder

URBAN Alma Pro L Double Lamb Station

URBAN MilkShuttle with whole milk

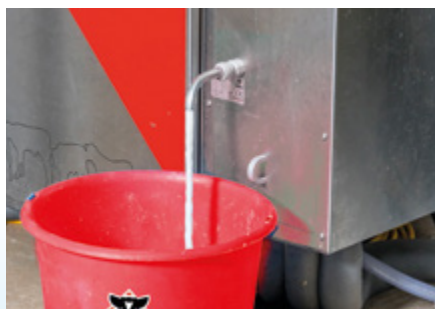


The automatic feeder



Control via touchscreen

The automatic feeder's integrated touchscreen can be used to operate the clearly designed user interface and to display any data that you want.



Milk dispensing tap

Milk can be taken from the feeder at any time, to feed lambs in individual stalls to for example.



Container

The stable side wall and low filling height (1.09 m) make it easy to fill with milk powder. Constant powder dosing is guaranteed by a mechanism on the powder bag.



Cleaning programme

The integrated cleaning programme automatically cleans all parts that transport milk to the teat thoroughly and reliably by using two different cleaning agents (alkaline and acidic) alternately.



Station electronics

The station electronics display the quantity of milk remaining for the lamb at the station as well as the animal number.



Animal identification

The animal identification system works by identifying the animals' transponders on their collar or electronic ear tags.



The URBAN software at the heart of the Alma Pro L

The operation and data retrieval via the integrated touchscreen is incredibly simple and provides an excellent overview of the different aspects of the supply and health status of your lambs. The intuitive user interface facilitates animal-specific feeding as well as a convenient creation of feed curves for each animal.



The one touch overview button retrieves the list of the animals that might need attention in just one click.

The terminal can be swivelled and moved up or down so it can be put in the most comfortable position to work with.

Herd overview

In the herd overview, you get the latest values for your herd round the clock! With the alert list (1), you are reliably informed about the quantities that have not been drunk and any deviations in the individual animal-specific values. Regardless of whether you want to see the drinking speed, the number of station visits or the amount of time that an animal spends at a feeding station – you can always keep an eye on what's happening. Enjoy an unparalleled monitoring experience for your herd!



Health evaluation

All health-related data is stored and automatically analysed! Animals that are behaving abnormally are marked up in orange or red immediately (2). This helps you to spot problems straight away and treat any illnesses early on.

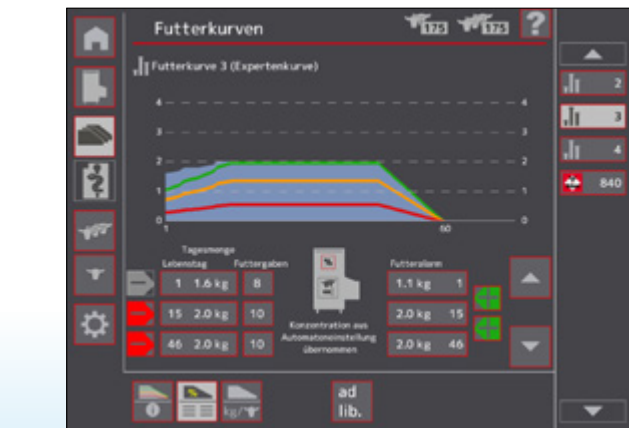


7-day feeding overview

In addition to the daily quantity consumed, the display shows the amount consumed over the last seven days (3). Benefit from a revolutionary flock monitoring method that offers you complete control and security!

Feed curve

On the clear touch terminal, you can easily set feed curves and determine the daily milk quantities and age-dependent milk composition for your lambs. Leave the drinking and weaning to the Alma Pro L and use your new-found freedom to focus on other important tasks.



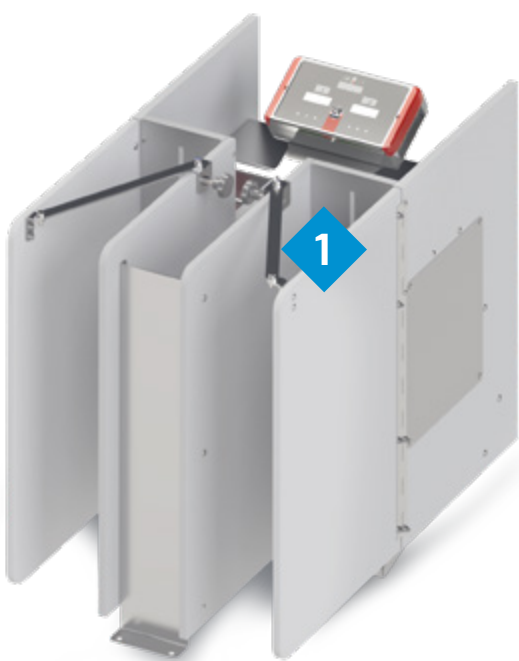
Mobile control – optional

Do you want to use your URBAN Alma Pro L via your smartphone or PC? With the **URBAN WiFi Router**, you can monitor your herd and adjust feeder settings from anywhere.



Feeding stations

Double lamb station

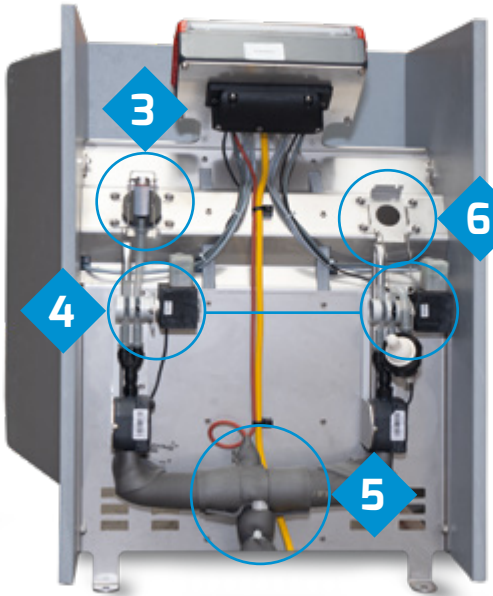


(1) **Width adjustment** - by moving the lateral barriers

(2) **Neck rail** – can be adjusted to different heights

Feeding technology

By adding the automatic valve unit (3) and FIT sensors (4) to both feeders and the temperature sensor (5) on the milk supply line, a secure and fully automatic operation is ensured. The easily replaceable teat (6) with quick-release fastening makes cleaning and maintaining the system easier.



(3) **Valve unit** – prevents “milk theft”

Easily replaceable teat – thanks to the quick-release fastening

(4) **Parallel feeding** thanks to the **two FIT sensors**

(5) **Temperature sensor** on the station

Save now!

RATIONING VS. AD LIBITUM

OBSERVATION PERIOD DAY 1 TO DAY 37	AD LIBITUM	RATIONING
Daily time requirements (h) ¹	1,5	0,5
Wage (€/h)	16,00 €	16,00 €
Number of lambs (pcs)	200	200
Additional consumption mat / lamb ²	4,4	0
Material costs (€/kg)	5,00 €	5,00 €

Savings resulting from the use of automatic feeders (rationing) compared to automatic feeders (ad libitum):
Up to € 4,992.00 per year

¹ Daily time requirements: cleaning and maintenance per feeder

² Additional consumption ad lib.: After 37 days: Sheep 7.4 kg MAT | Goats 4.4 kg MAT





Options and accessories

The wide range of special equipment available means that you can adjust the feeders to meet your individual needs.

1 Powder storage extension
If the Alma Pro L is used for large groups of animals, you can increase the capacity of the powder container from 35 to 55 kg.



2 Additional boiler
If you want, you can add a second boiler for better performance. This significantly increases the heating capacity of the automatic feeder so that up to 240 lambs can be fed. The concept also has a new two-phase cleaning process where two different cleaning agents are using during a rinse cycle.



OUR TIP FOR BETTER PERFORMANCE



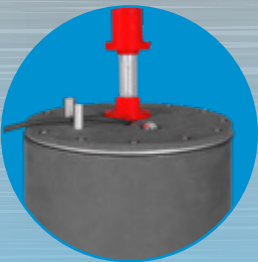
Height-adjustable ramp
An additional, height-adjustable ramp is available for small lambs.

6 URBAN WiFi Router
With the WiFi Router, you can monitor your herd and adjust feeder settings from anywhere.

Signal lights
Red, yellow, green – the status of the automatic feeder can easily be checked from a distance thanks to the traffic light system.



3 UV-C Boiler
The UV-C pipes in the boiler remove germs and bacteria from the animals' drinking water.



4 Powder additive dosing device
The automatic dispensing of powdery additives like vitamins or electrolytes can either be done for individual animals or for an entire group.





URBAN VitalControl

Experience the future of digital health recording with URBAN VitalControl. Our innovative device enables a precise monitoring and documentation of the health status of your animals. Equipped with an RFID reader and a thermometer, the device enables a seamless monitoring of your lambs.

Highest accolade for advanced technology

We are proud to share that the URBAN VitalControl was awarded silver for the Innovation Award at EuroTier in 2018 by DLG. This recognition highlights the outstanding quality and innovative spirit of our products.



The complete package for maximum efficiency

The VitalControl reaches its full potential when used in combination with the URBAN Alma Pro L. The seamless integration means that all data can be linked, retrieved immediately and automatically documented. What does this mean for you? Maximum overview and efficiency with your animal health monitoring.

Use the award-winning technology of the URBAN VitalControl and take your animals' health to the next level. Don't leave anything to chance with precise monitoring and smart documentation for successful lamb rearing.

The advantages:

- ◆ Regular monitoring and recording of your animals' health data
- ◆ Combination of RFID reader and thermometer
- ◆ Linked data that can be retrieved immediately



Left-right neutral, rotating measurement head with integrated measuring tip

Long, pliable, deflectable measuring tip made from a flexible, tissue-friendly material

Visual signalling of the measurement results
Illumination of the anal area

The clear display and convenient handling allows for a quick and simple measuring process.

«This is what modern, digital animal data recording looks like!»

Dr. Andreas Deininger

Vibration to signal the end of the measurement

USB connection

URBAN Product Family

URBAN Alma Pro L

The intelligent automatic lamb feeder

- Completely automated feeding
- Precise and plannable health management
- Permanently warm milk available for all lambs
- User-friendly touch terminal
- Fully automatic rinsing system
- Supplies up to 240 lambs with 4 double stations (8 teats)
- With a flock of 200 lambs, offers potential annual savings of almost € 5,000 when compared to ad libitum feeding.



URBAN MilkShuttle & MilkShuttle Pasteur

Needs-oriented, mobile lamb feeding

- Electric drive
- 2-stage agitator
- All-terrain chassis
- Small turning circle
- Simple dosing
- Available in five different sizes ranging from 100 to 350 litres



URBAN
MilkShuttle
Videos



URBAN VitalControl

Outstanding technology for digital health recording

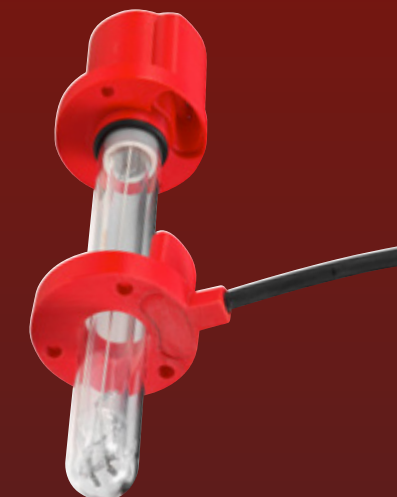
- Seamless integration in the URBAN feeding system
- For the regular monitoring and recording of animal health data
- Combination of RFID reader and thermometer
- Data is linked and can be retrieved immediately
- Suitable for calves and lambs

*„This is what modern, digital animal
data recording looks like!“*

Dr. Andreas Deininger

URBAN Planning and Consulting

Our competent teams can help you with the
planning and operation of your system



URBAN HygieneSet UV-C

Reliable disinfection: A germ-free environment for your animals

- For daily and seamless disinfection
- Break infection chains within your herd
- Free from chemicals and environmentally friendly
- Kills germs and viruses with ultra-violet light
- Available as an add-on to the URBAN Alma Pro L



URBAN
HygieneSet UV-C
Videos



Our vision: the modernisation of an industry

Since 1984, URBAN has been working passionately to develop efficient solutions for farmers to close existing gaps. Our aim isn't to make as much money as possible, we simply want to meet the needs of the farming industry. Our 100 dedicated employees ensure that our innovative products are available in over 60 countries across five continents. Despite our global presence and continuous exchanges with farmers from around the world, we remain proud of our roots in Wüstring, Lower Saxony.

Since 1984, URBAN has been working passionately to develop efficient solutions for farmers to close existing gaps. Our aim isn't to make as much money as possible, we simply want to meet the needs of the farming industry. Our 100 dedicated employees ensure that our innovative products are available in over 60 countries across five continents. Despite our global presence and continuous exchanges with farmers from around the world, we remain proud of our roots in Wüstring, Lower Saxony.

As a future-oriented company, we constantly develop needs-oriented and efficient solutions that help to make calf and lamb rearing more sustainable. We cover all areas that are important for successful rearing.

We keep an eye on the development and health of your animals, and ensure that the best conditions in the barn are maintained at all times. In doing so, we create excellent conditions for rearing and optimal animal health.

As a reliable and equal partner, we develop our products with the aim of making your work easier and minimising the amount of time you have to spend working. We believe that our innovative solutions will help you achieve the best for you and your animals.



URBAN
Image video



URBAN GmbH & Co. KG

Auf der Striepe 9
27798 Wüstring
Germany

+49 44 84 93 80 - 0
info@urbanonline.de

www.urbanonline.de/en

VISIT US AT:



www.youtube.com/user/calffeeding



www.flickr.com/photos/urbanonline



www.facebook.com/urbanonline



www.instagram.com/urban_fuetterungstechnik



© 2024 URBAN GmbH & Co KG

Subject to technical modifications and errors.
plantamedium | 10/2024