

# URBAN Alma Pro



**MODERN AND  
CONVENIENT CALF FEEDING**





*Our inspiration  
is and always  
will be nature.*

The welfare of each individual animal is crucial when it comes to making sure that your calf rearing is successful. Our Alma Pro automatic calf feeder will be there, by your side, as a reliable partner. The innovative device takes care of the regular feeding of your calves, making sure that they get exactly the amount of milk they need. This guarantees healthy growth for every calf and for the herd as a whole.

### Be part of the calf rearing revolution.

With our system, you can monitor all your animals individually. When was the last time that calf had a drink? What is its drinking behaviour like and is it in good health? You can retrieve all the important information at any time.

With our little helper on your team, you'll experience a noticeably lighter workload, more efficient work processes and optimally supplied calves. Invest in the future of calf rearing with the URBAN Alma Pro.







# Flexible Automatic Convenient

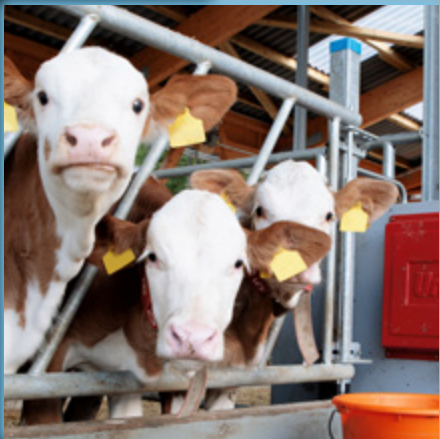


## Needs-based, automated feeding

For optimal calf development, it's best to feed your calves small quantities of milk several times day. The URBAN Alma Pro is a convenient solution. It ensures that each of your calves gets the supply of milk they need at a constant temperature and with the same concentration all day long. This helps to noticeably ease your and your team's workload, while ensuring that your calves develop optimally.

## Individual health management

With the Alma Pro, you can check and evaluate the health status of your calves whenever you want. You can even retrieve the data you need in a clear display and intervene immediately if there is a problem. The compact design and fully automatic cleaning programme ensure good food hygiene and protect the health of your calves.





# Why you should opt for an automatic feeding system



## Noticeably reduced workload and full control

Your valuable time is very important to us. Thanks to our Alma Pro, you can forget all about annoying jobs like transporting buckets, rinsing containers and stirring drinks. Use your newly freed up time for other important tasks but still maintain full control of all work steps.

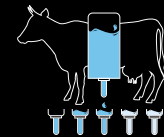
## A member of the team for any eventuality

The Alma Pro is the perfect partner for any situation as it can be used with both small and large herds. One feeder can feed up to four calves at the same time. A single control panel can control up to four feeders and 16 feeding stations, all while monitoring the individual animals at the same time.

## The advantages of the URBAN Alma Pro:



Round-the-clock, species-appropriate feeding



Natural portion sizes



Continuous health monitoring



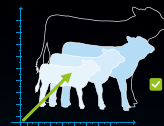
Constant milk temperature



Consistent milk concentration



Optimal hygiene during feeding



Improved growth rate





# Structure and function

## Robust construction and low-maintenance operation

- 1 **Control panel** with touchscreen
- 2 **Storage container** that can hold up to 35 kg of milk powder
- 3 **Powder auger** for a consistently precise dosing of the milk powder
- 4 **Water connection**
- 5 **Boiler / Heat exchanger**
- 6 **Cleaning agents** for the fully automatic cleaning

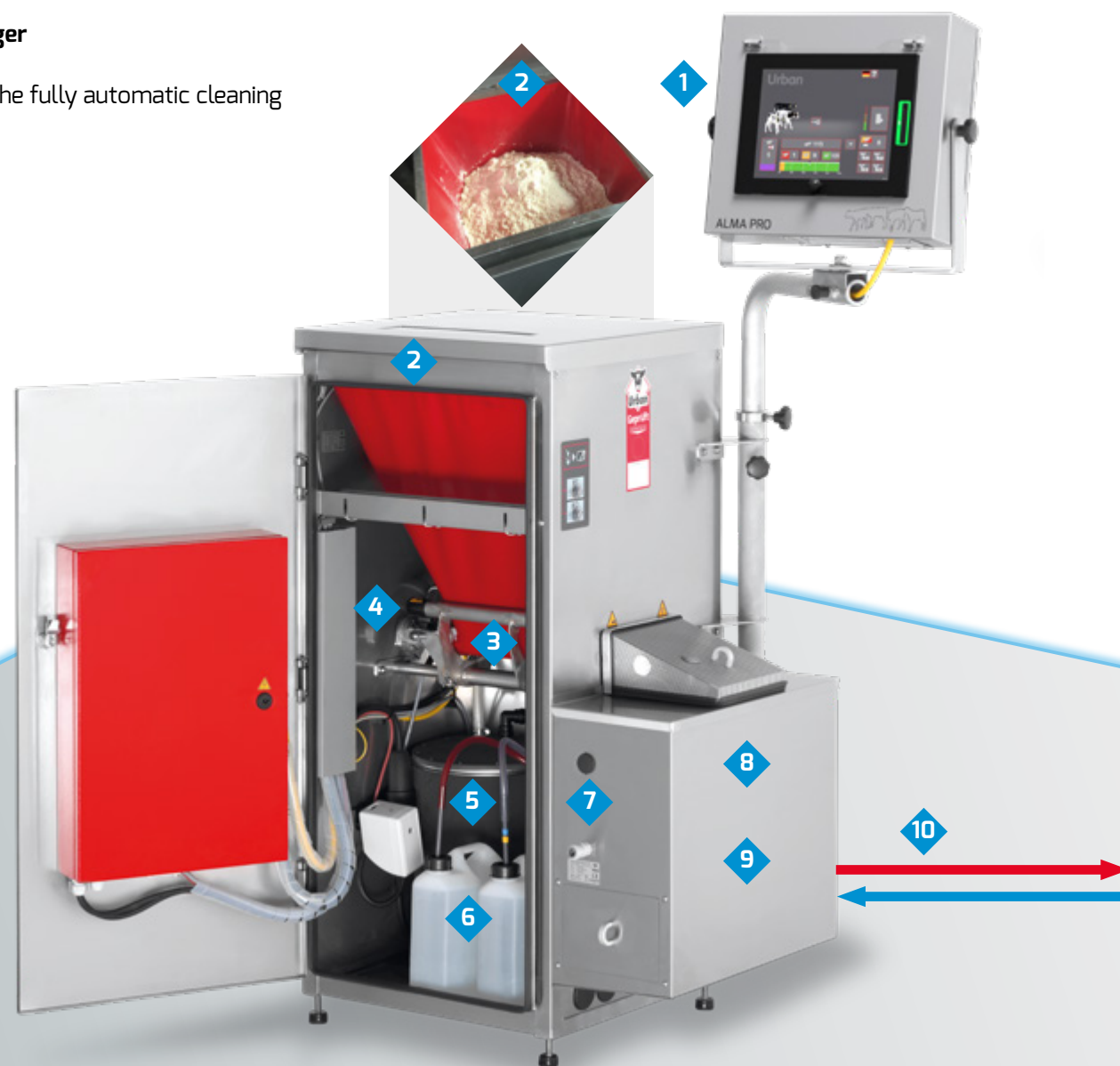
- 7 **Milk tap** for easy milk dispensing
- 8 **Heated mixing container**
- 9 **Mixing container float** for measuring the quantity of milk dispensed down to the millimetre

- 10 **Ring line** that carries the milk to the teat. The regular, temperature-controlled circulation between the teat and mixing container ensures that the milk always stays warm and prevents the line from freezing during cold weather
- 11 **Feeding station** – up to 4 feeding stations can be operated by one automatic feeder
- 12 **Station valve**
- 13 **Temperature sensors** that ensure the milk remains at a constant temperature

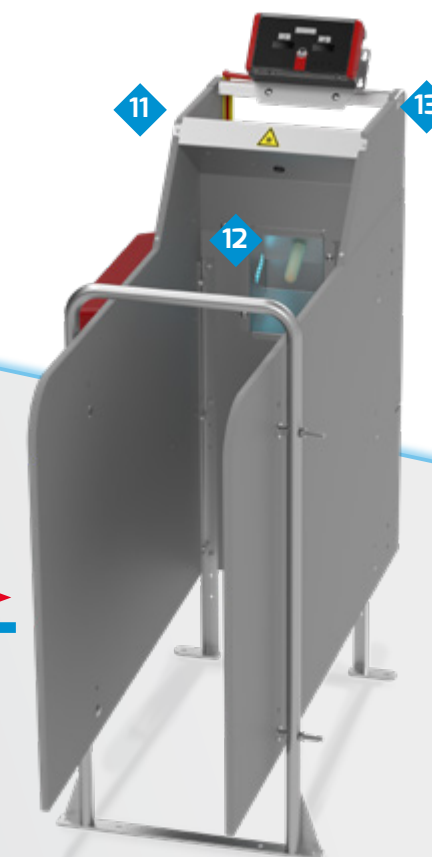
- 14 **Whole milk feeding (\*optional)** The feeder can even be used to feed animals whole milk or a mix of whole milk and milk powder without any problems. The proportion of whole milk can be adjusted within a range between 0% to 100%. The **URBAN MilkShuttle** can be used to supply automatic feeders with whole milk.



URBAN  
Alma Pro  
Videos



URBAN Alma Pro  
Automatic Feeder



URBAN Alma Pro  
feeding station



URBAN MilkShuttle  
with whole milk





# The automatic feeder

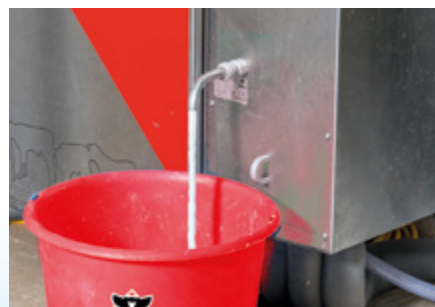


Abbildung zeigt Sonderausstattung



## Control via touchscreen

The automatic feeder's integrated touchscreen can be used to operate the clearly designed user interface and to display any data that you want.



## Milk dispensing tap

Milk can be taken from the feeder at any time, to feed calves in individual stalls for example.



## Container

The stable side wall and low filling height (1.09 m) make it easy to fill with milk powder. Constant powder dosing is guaranteed by a mechanism on the powder bag.



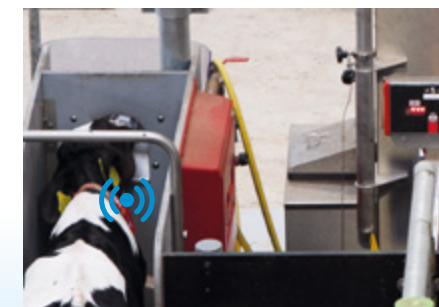
## Cleaning programme

The integrated cleaning programme automatically cleans all parts that transport milk to the teat thoroughly and reliably by using two different cleaning agents (alkaline and acidic) alternately.



## Station electronics

The station electronics display the quantity of milk remaining for the calf at the station as well as the animal number, and they can be used for up to two feeding stations.



## Animal identification

The animal identification system works by identifying the animals' transponders on their collar or electronic ear tags.





# The URBAN software at the heart of the Alma Pro

The operation and data retrieval via the integrated touchscreen is incredibly simple and provides an excellent overview of the different aspects of the supply and health status of your calves. The intuitive user interface enables animal-specific feeding and a convenient creation of feed curves for each animal.



The terminal can be swivelled and moved up or down so it can be put in the most comfortable position to work with.

The one touch overview button retrieves the list of the animals that might need attention in just one click.

## Herd overview

In the herd overview, you get the latest values for your herd round the clock! With the alert list (1), you are reliably informed about the quantities that have not been drunk and any deviations in the individual animal-specific values. Regardless of whether you want to see the drinking speed, the number of station visits or the amount of time that an animal spends at a feeding station – you can always keep an eye on what's happening. Enjoy an unparalleled monitoring experience for your herd!

## Health evaluation

All health-related data is stored and automatically analysed! Animals that are behaving abnormally are marked up in orange or red immediately (2). This helps you to spot problems straight away and treat any illnesses early on.

## 7-day feeding overview

In addition to the daily quantity consumed, the display also shows the amount consumed over the last seven days (3). Benefit from a revolutionary herd monitoring method that offers you complete control and security!

## Feed curve

On the clear touch terminal, you can easily set feed curves and determine the daily milk quantities and age-dependent milk composition for your calves. Leave the feeding and weaning to the Alma Pro and use your new-found freedom to focus on other important tasks.



## Mobile control – optional

Do you want to use your URBAN Alma Pro via your smartphone or PC? With the **URBAN WiFi Router**, you can monitor your herd and adjust feeder settings from anywhere.





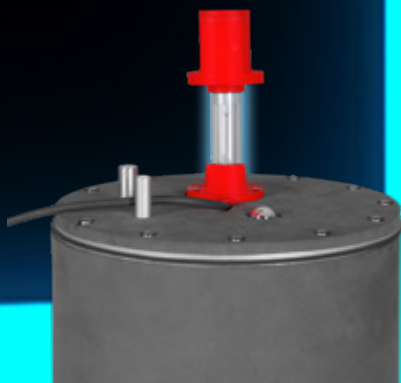
# URBAN HygieneSet<sup>UV-C</sup>

Do you want to take the hygiene on your farm to the next level? Well then, our URBAN HygieneSet UV-C is perfect for you! The UV-C teat disinfection and boiler unit, which was awarded a silver medal at EuroTier 2021, offers a reliable, fast, chemical-free and energy-saving disinfection of the teat and inside of the housing unit using UV-C light. Discover our innovative hygiene solution and enjoy the reassuring feeling that your animals are safe!

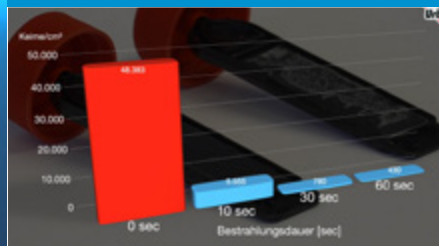


## UV-C drinking water disinfection

The UV-C pipes in the boiler remove germs and bacteria from the animals' drinking water.



Over 90% of all germs are killed off after just 11 seconds.



This system helps to reduce resource use as only 2 watts per lamp are needed to reliably disinfect the teat without chemicals.

## UV-C teat disinfection

Fast, chemical-free and energy-saving disinfection through UV-C light.



When a calf enters the feeding station, the UV-C lights switch off automatically.



URBAN HygieneSet UV-C Videos



*„This system allows us to effectively stop diseases being transmitted between animals via drinking teats.“*

Dipl. Bio. Regina Deininger

# URBAN FitPlus

With **URBAN FitPlus**, the animals always have their feed ready thanks to an optimisation of the preparation with the Alma Pro automatic feeder.

There are barely any interruptions during due to technical issues during the feeding process. The calves' feed intake is much more relaxed and stress-free as they don't have to wait for milk.

The **URBAN FitPlus** process allows the automatic feeder to switch to ad libitum feeding when needed. This makes it easier for young, inexperienced animals to learn to drink from an automatic feeder.

*„With the URBAN FitPlus, the learning time is optimised. This means less stress and time spent for both animals and farmers.“*

Dipl. Ing. Martin Lüllmann



The inclination of the drinking teat strengthens the calves' natural suckling reflex and encourages digestion.



With feeder calf rearing, it is very important that any new arrivals coming from other farms are fed and left to rest immediately after being unloaded from the wagon, as they may be stressed after travelling.

An automatic feeder equipped with 4 stations can now be used to feed new arrivals quickly and in a stress-free way thanks to the FitPlus process.





# Options and accessories

The wide range of special equipment available means that you can adjust the feeders to meet your individual needs.

## 1 Powder storage extension

If the Alma Pro is used for large groups of animals, you can increase the capacity of the powder container from 35 to 55 kg.



## 2 Additional boiler

If you want, you can add a second boiler for better performance. This will significantly increase the heating capacity of the automatic feeder so that more calves can be fed. The concept also has a new two-phase cleaning process where two different cleaning agents are used during a rinse cycle.



OUR TIP  
FOR BETTER  
PERFORMANCE

## 3 Liquid additive dosing device

Liquid additives like vitamins or electrolytes can be added for individual animals or for an entire group.



## 4 Powder additive dosing device

The automatic dispensing of powdery additives like vitamins or electrolytes can either be done for individual animals or for an entire group.



## 6 URBAN WLAN-Router

With the WiFi Router, you can monitor your herd and adjust feeder settings from anywhere.

## Signal lights

Red, yellow, green – the status of the automatic feeder can easily be checked from a distance thanks to the traffic light system.







# Feeding stations

## STANDARD STATION



Individual animal recognition, support bar, 30° angled teat, stainless steel frame and plastic plates – even the standard version of the feeding station is equipped with a range of innovative features.

## DOUBLE STATION

Without support bar for larger space requirements and for easier calf learning. The double station can also be combined with the **URBAN HygieneSet UV-C**.



### URBAN VitalControl

The ideal add-on for health monitoring that can be easily integrated into the URBAN feeding system. You can read more about this on Page 22.

## Hygiene station UV-C



With the **URBAN Hygiene Set UV-C**, the teat is cleaned quickly, without chemicals and in an energy-saving way, immediately after it has been used by a calf.



# Equipment options

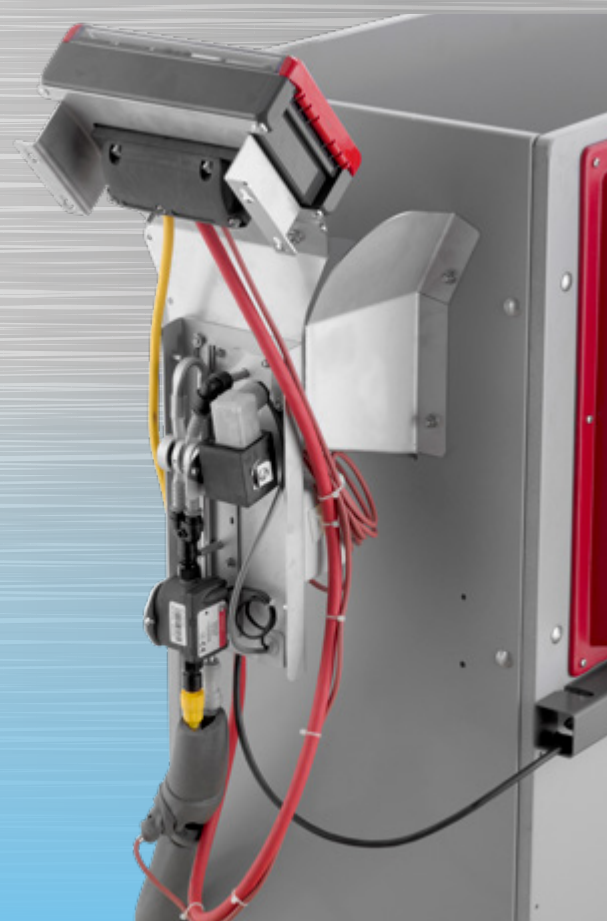
## Hinged feeding station

You can also order both feeding stations in a hinged version as an option. The tilting function helps to create plenty of space for mucking out and so makes cleaning much easier.



## Parallel feeding with FIT sensors

All feeding stations, regardless of whether they are standard stations or hygiene UV-C stations, are equipped with an FIT sensor. You can find more information about FIT sensors on Page 15.





# URBAN Product Family



## URBAN Alma Pro



URBAN Alma Pro Videos

### Automated feeding for needs-oriented calf rearing

- Completely automated feeding
- Precise and plannable health management
- Permanently warm milk available for all calves
- User-friendly touch terminal
- Fully automatic rinsing system
- Can supply up to 100 calves with 4 stations

## URBAN Calf Brush & Electrical Calf Brush\*

### Animal relaxation and well-being

- Increase comfort in the barn
- Boost blood circulation and transpiration
- Calmer and cleaner animals
- Switches on and off automatically\*
- Lower power consumption\*
- Suitable for 40 – 50 animals\*
- Automatic protective function if the motor gets blocked (e.g. by an animal's tail)\*



URBAN MilkShuttle Videos

## URBAN MilkShuttle & MilkShuttle Pasteur

### Needs-oriented, mobile calf feeding

- Electric drive
- 2-stage agitator
- All-terrain chassis
- Small turning circle
- Simple dosing
- Available in five different sizes ranging from 100 to 350 litres





## URBAN VitalControl

### Outstanding technology for digital health recording

- Seamless integration in the URBAN feeding system
- For the regular monitoring and recording of animal health data
- Combination of RFID reader and thermometer
- Data is linked and can be retrieved immediately
- Suitable for calves and lambs

*„This is what modern,  
digital animal data recording  
looks like!“*

Dr. Andreas Deininger

## URBAN Planning and Consulting

Our competent teams can help you with the  
planning and operation of your system



## URBAN EcoProtector UV-C

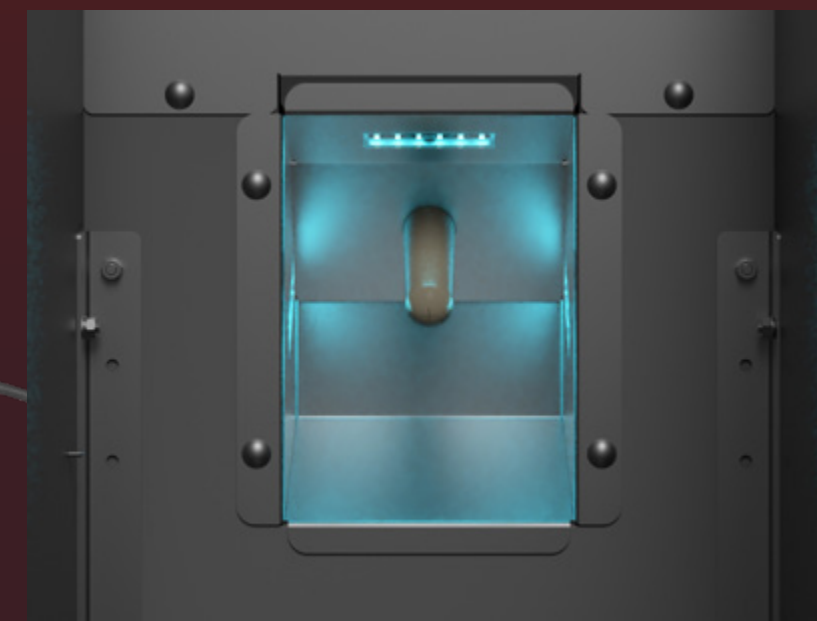
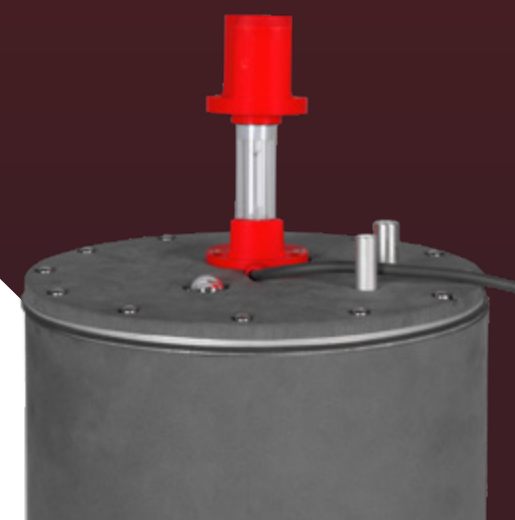
### Reliable disinfection: A germ-free environment for your animals

- For daily and seamless disinfection
- Break infection chains within your herd
- Free from chemicals and environmentally friendly
- Kills germs and viruses with ultra-violet light
- Available as an add-on to the URBAN Alma Pro or URBAN MilkShuttle

## URBAN HygieneSet UV-C



URBAN  
HygieneSet UV-C  
Videos





# Our vision: the modernisation of an industry

Since 1984, URBAN has been working passionately to develop efficient solutions for farmers to close existing gaps. Our aim isn't to make as much money as possible, we simply want to meet the needs of the farming industry. Our 100 dedicated employees ensure that our innovative products are available in over 60 countries across five continents. Despite our global presence and continuous exchanges with farmers from around the world, we remain proud of our roots in Wüstring, Lower Saxony.

Since our founding, we have developed, produced and distributed URBAN products with a relentless focus on quality and innovation. All our experiences go back into the improvement of our products to guarantee sustainable and future-proof calf and lamb rearing. We are always looking forwards as we firmly believe that our combination of traditional and modern approaches, as well as the resulting technological innovations, can revolutionise the entire sector.

As a future-oriented company, we constantly develop needs-oriented and efficient solutions that help to make calf and lamb rearing more sustainable. We cover all areas that are important for successful rearing.

We keep an eye on the development and health of your animals, and ensure that the best conditions in the barn are maintained at all times. In doing so, we create excellent conditions for rearing and optimal animal health.

As a reliable and equal partner, we develop our products with the aim of making your work easier and minimising the amount of time you have to spend working. We believe that our innovative solutions will help you achieve the best for you and your animals.



URBAN  
Image video



## URBAN GmbH & Co. KG

Auf der Striepe 9  
27798 Wüstring  
Germany

+49 44 84 93 80 - 0  
info@urbanonline.de

[www.urbanonline.de/en](http://www.urbanonline.de/en)

## VISIT US AT:



[www.youtube.com/user/calffeeding](http://www.youtube.com/user/calffeeding)



[www.flickr.com/photos/urbanonline](http://www.flickr.com/photos/urbanonline)



[www.facebook.com/urbanonline](http://www.facebook.com/urbanonline)



[www.instagram.com/urban\\_fuetterungstechnik](http://www.instagram.com/urban_fuetterungstechnik)



© 2024 URBAN GmbH & Co KG

Subject to technical modifications and errors.  
plantamedium 10/2024