

The image shows two large industrial drilling rigs, identified as Oilwell E-2000, positioned on a large, flat, reddish-brown gravel or dirt surface. The rig on the left is partially obscured by a white diamond-shaped graphic overlay. The rig on the right is more fully visible, showing its complex structure of metal towers, ladders, and various mechanical components. In the background, there are other smaller pieces of equipment, including a yellow excavator and several white storage tanks. The sky is bright blue with scattered white clouds. The overall scene depicts an active industrial or construction site.

**OILWELL E-2000
DRILLING RIG**



Letzring Inc



General Information



Technical Specifications



Photographic Record



GENERAL Information

Completely Refurbished in 2012
Good Condition
Stacked 2021
500 Ton NOV TDS11 Top Drive
Unused Since 2021
Spare Equipment

CONTACT

- GENERAL CONTACT INFORMACION
Letzring Inc
- Cell: +1 (907) 398-5263
Email: mattletzring@gmail.com





Technical Specifications

- DRAWWORKS:** Oilwell E-2000 (2000hp) -with Elmago 7838 Auxiliary Electric Brake.
Powered by Two (2) G.E. 752 -1000 HP Electric Motors, Drillers Console, Grooved
for 1 ½" Wire-line, Single Drum. With 2 Hyd catheads.
- MAST:** Lee C. Moore, 152' Beam Leg, 1,300,000# SHL. Seven (7) 60" Sheaves with (1)
60" Fast-line Sheave. Boom Pole, Derrick Shoes, Stand Pipe Manifold. Derrick Ladder.
- TRAVELING EQUIP:** Oilwell 650 Ton Blocks. VARCO TDS-11S 500 ton top drive with 120" 500 ton
bales
- SUBSTRUCTURE:** Substructure - Lee C. Moore Swing-Up With Elevator, 32' Floor Height, Rated
800,000# Setback, Sub Skids (2) 5' H x 60' long.
Lee C Moore Rig Rover Walking system Mdl 544670 500,000 Capacity
Grasshopper will walk 160feet.
- ROTARY:** Rotary Table-Oilwell 8275 27" x 53" w Master Bushing



Technical Specifications

BOP EQUIPMENT: One (1) 13 5/8" Cameron Type U Single Ram Preventor 5000 #
One (1) 13 5/8" Schaffer Double Ram Preventor 5000 #
One (1) GL Hydril Annular 5000#
One (1) 5000# Mud Cross
Accumulator - Koomey type 80 - 7-Station. Choke Manifold 4 1/16"X 10k

ENGINES: Four (4) Caterpillar 3512 diesel engines with Cat 1050 KW generators.
2 3512C used 1 year
2 3512A models

SCR: Legacy Siemens 4X4 control house. 600v DC and 480v AC power.
2-500t AC units and stepdown transformers



Technical Specifications

- MUD PUMPS:** Two (2) Gardner Denver PZ-11's (1600 hp each) With 7500 PSI Southwest fluid ends, powered by (4) AMD 800 hp DC Traction Motors 5x6 Charge Pumps, Belts, Belt Guard.
- MUD SYSTEM:** Three Tank Mud System. 10' W x 40' L x 8' H. 1500 Bbl Capacity Two Derrick Shale Shakers
Mud Mixers - Harrisburg Mud Gas Separator
Brandt Mud Mixers - 8 - 10 hp Brandt Agitators
- WATER TANK:** 2-Water Tanks 500 BBLs Skidded - Double Life Pump with Electric Motor



Technical Specifications

HANDLING TOOLS: 500 Ton Handling tools for Contractor's Drill Pipe and Drill Collars, Blohm & Voss Hydraulic Floor hand, and rotating mouse hole.

DRILL STRING: Drill Pipe - 10,717 feet 340 jts - 5" OD, 19.50 4 ½ IF Grade
S-135 Drill Collars - 6-Jts. - 8" OD 6 5/8 REG

Drill Collars - 6-Jts. - 9" OD 7 5/8 REG HWDP 50jts-5"-with 4 ½ IF thread
Assorted XO subs and lift subs



Technical Specifications

AUXILIARY EQUIP: Mathey .092 Wireline Measuring Unit. 2- Ingersoll Rand, K5UL Air hoist for handling tubulars.
2 Hyd boom pole winches
Pipe Racks Three (3 sets) 18" Tall V-Door Ramp with Stairs
Shaker Manifold - 12" pipe with outlets
Hydraulic Power Unit- 2-100 hp max min 75 - hoses and hydraulic lines
Cat walk two piece 18" H x50' L
Martin Decker weight indicator Elevator Links, 500 ton
Drill Pipe Elevators Drill Pipe Slips
Drill Collar Elevators
Manual Tongs Type DB with 3 ½" - 10 ¾" jaws

HOUSES: Top Dog House -Knowledge Box. Tool Benches w/ Koomey type 80, Remote Control
Bottom Change House w/ 16 Lockers/ Parts House lea.
Tool House/Paint locker
lea. - Parts Storage House



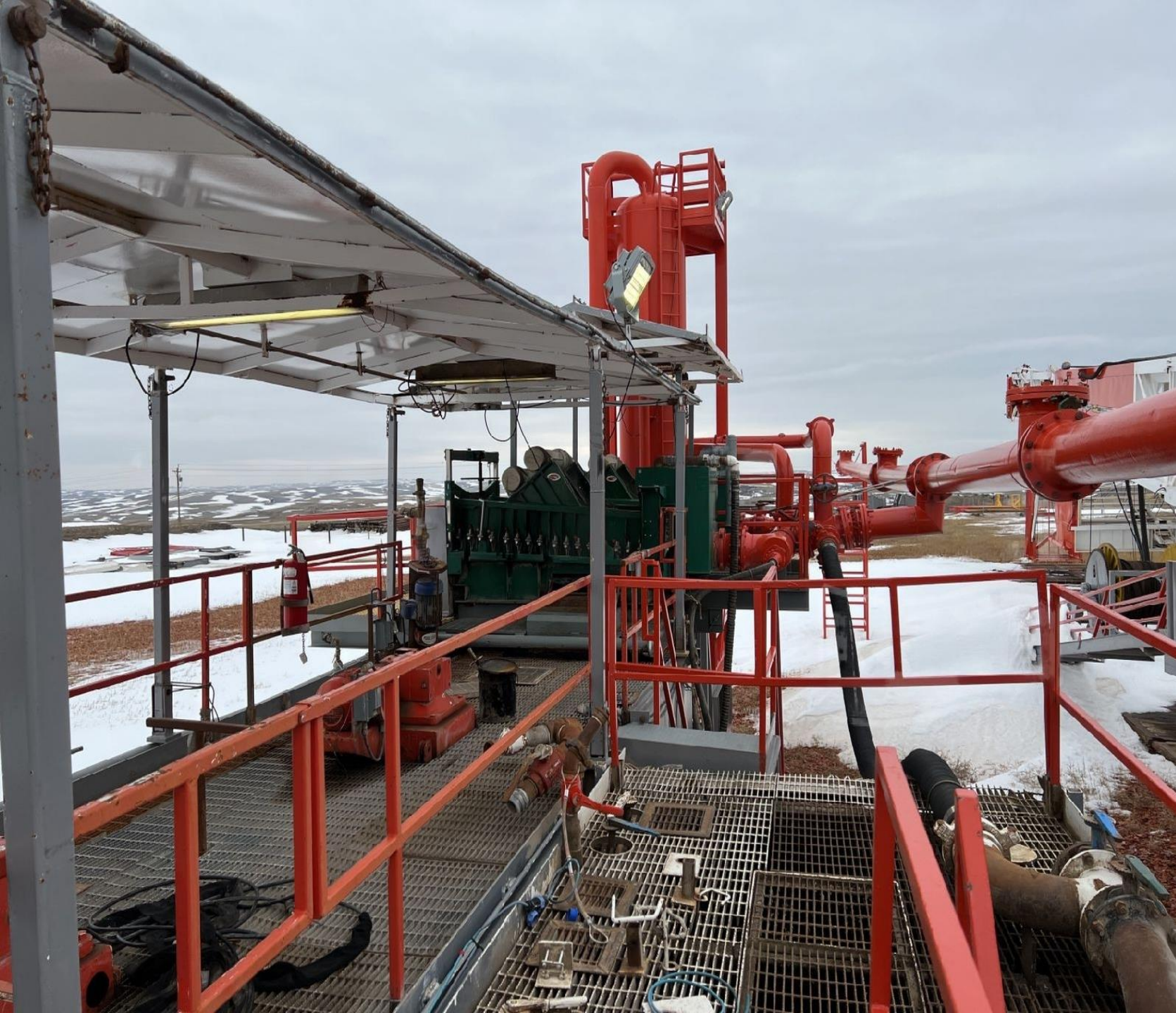


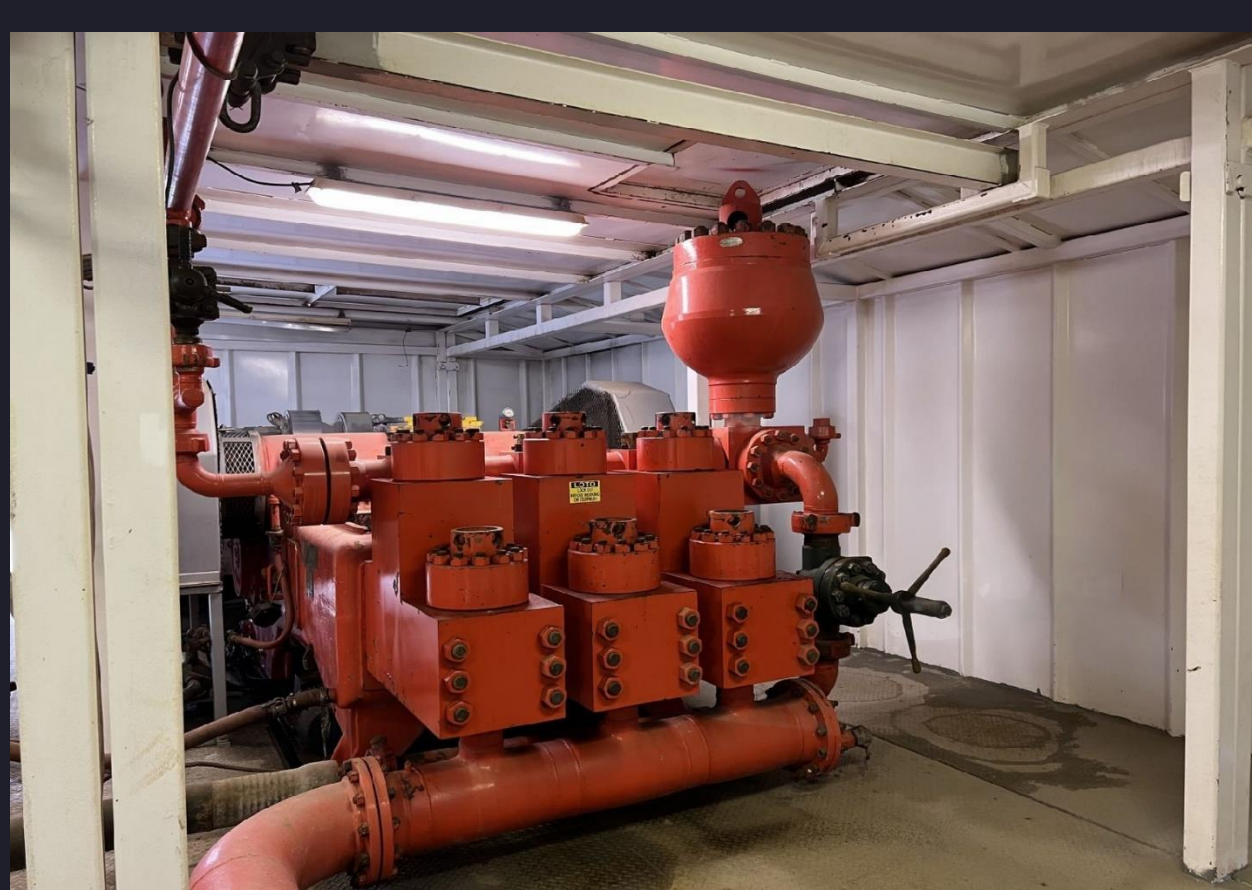
www.letzring.com





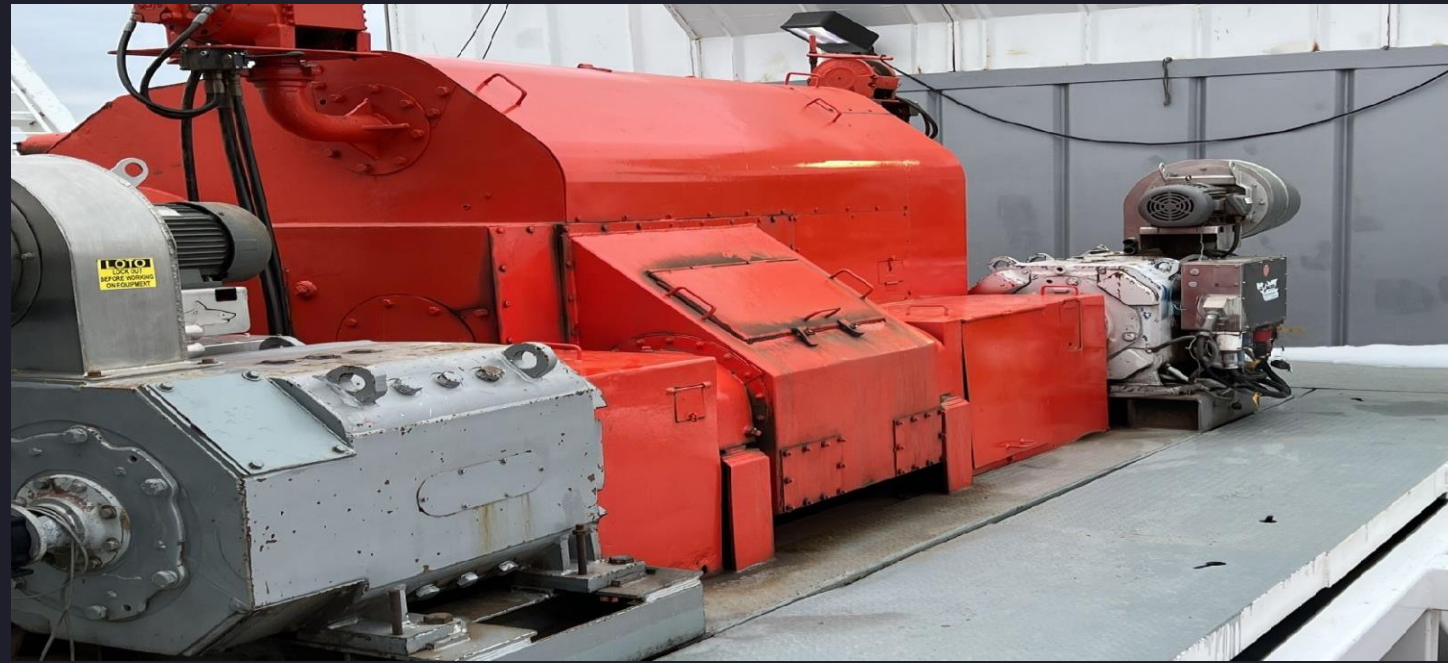


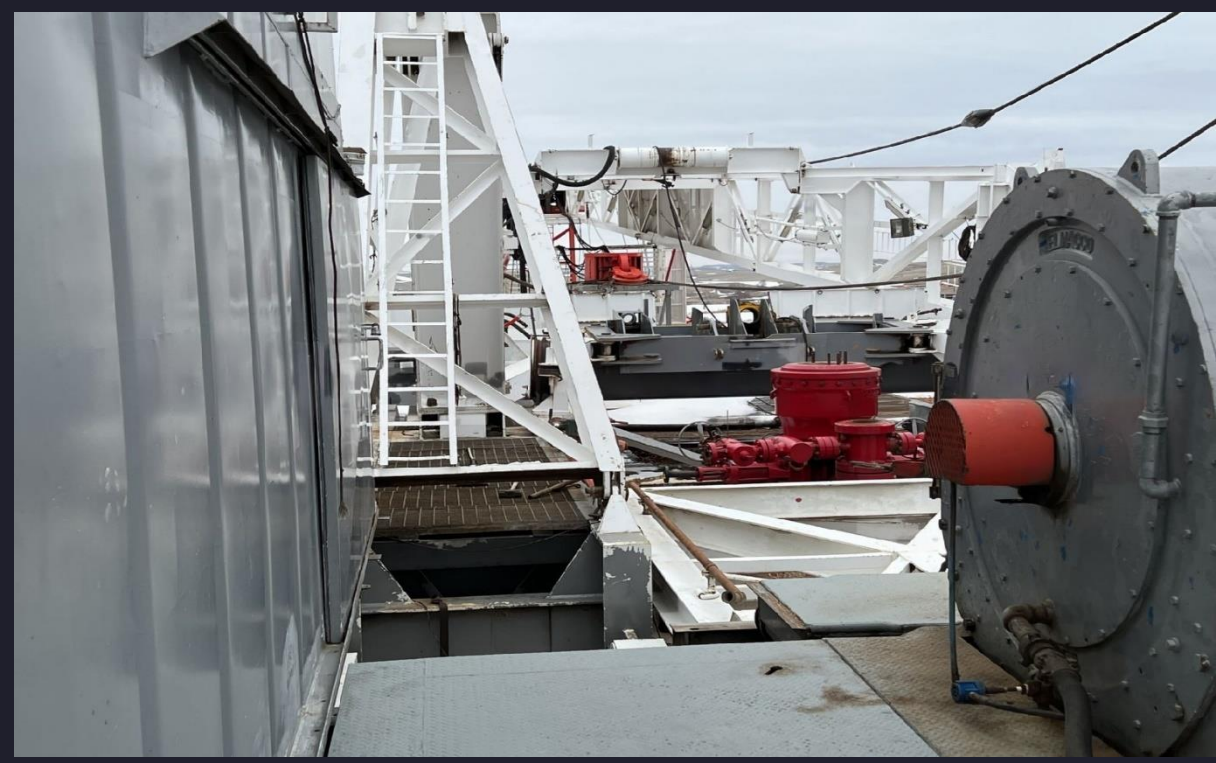
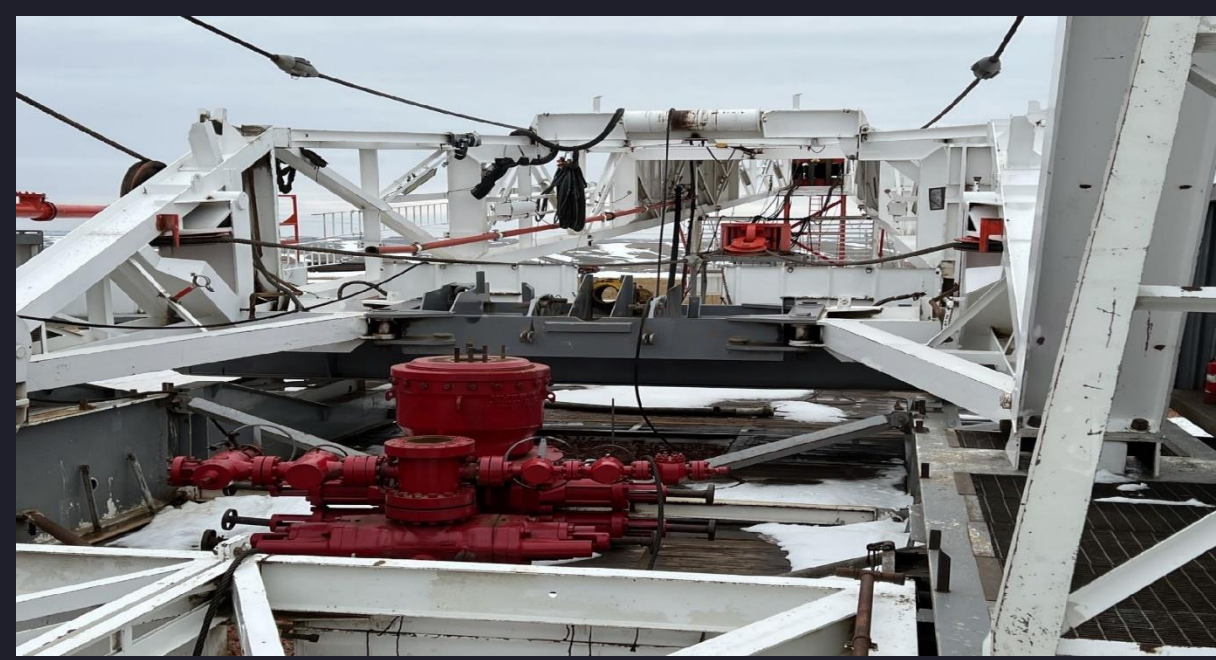






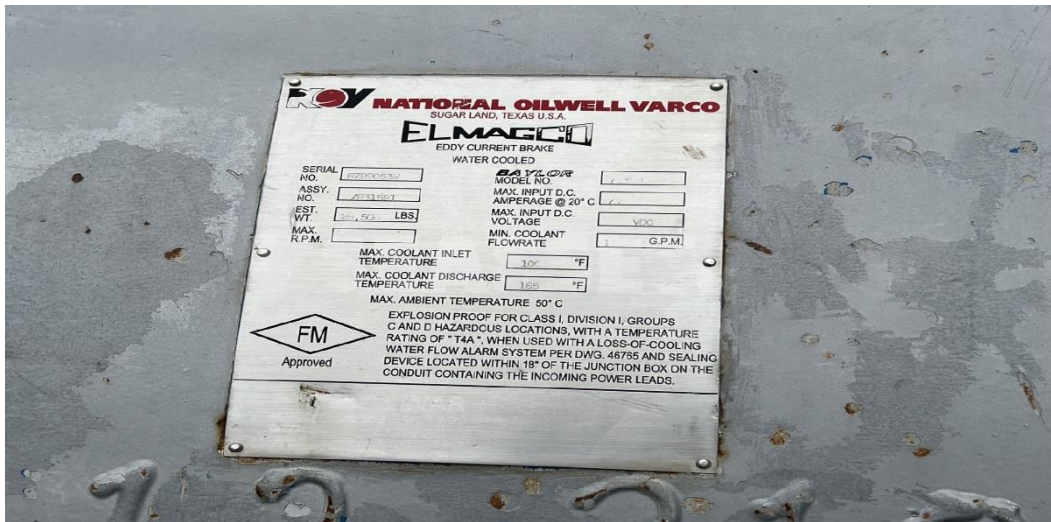














☎ Ph: +1 (907) 398-5263

✉ Email: mattletzring@gmail.com

🌐 www.letzring.com