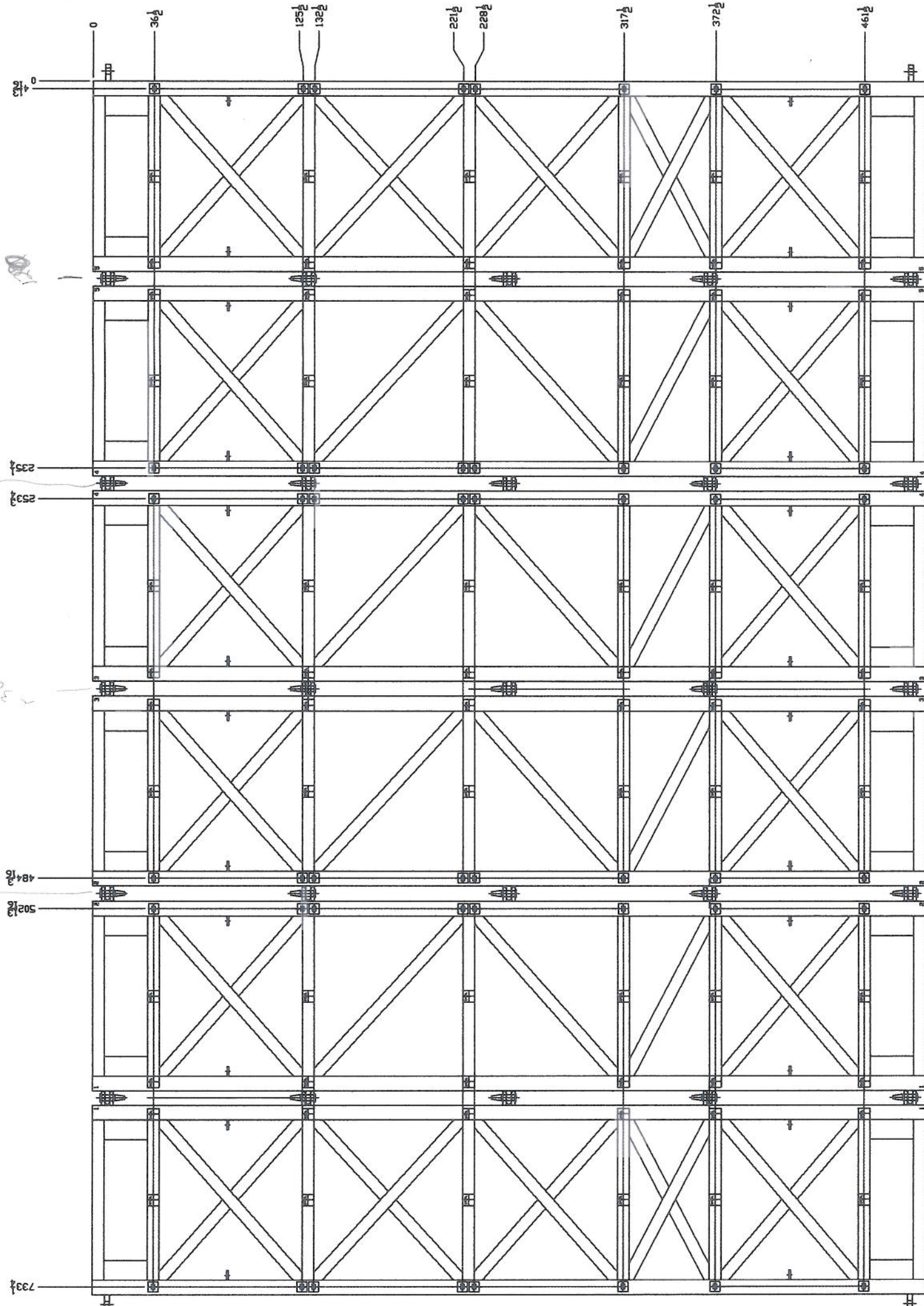


REV	DATE	DESCRIPTION	SPECIFICATION	CODE
48	01/20	CONTAINER ANCHOR	-	DT-30X
49	01/20			



NOTE:
 QUANTITIES SHOWN ARE FOR 1
 A TOTAL OF 1 REQUIRED PER BUILD

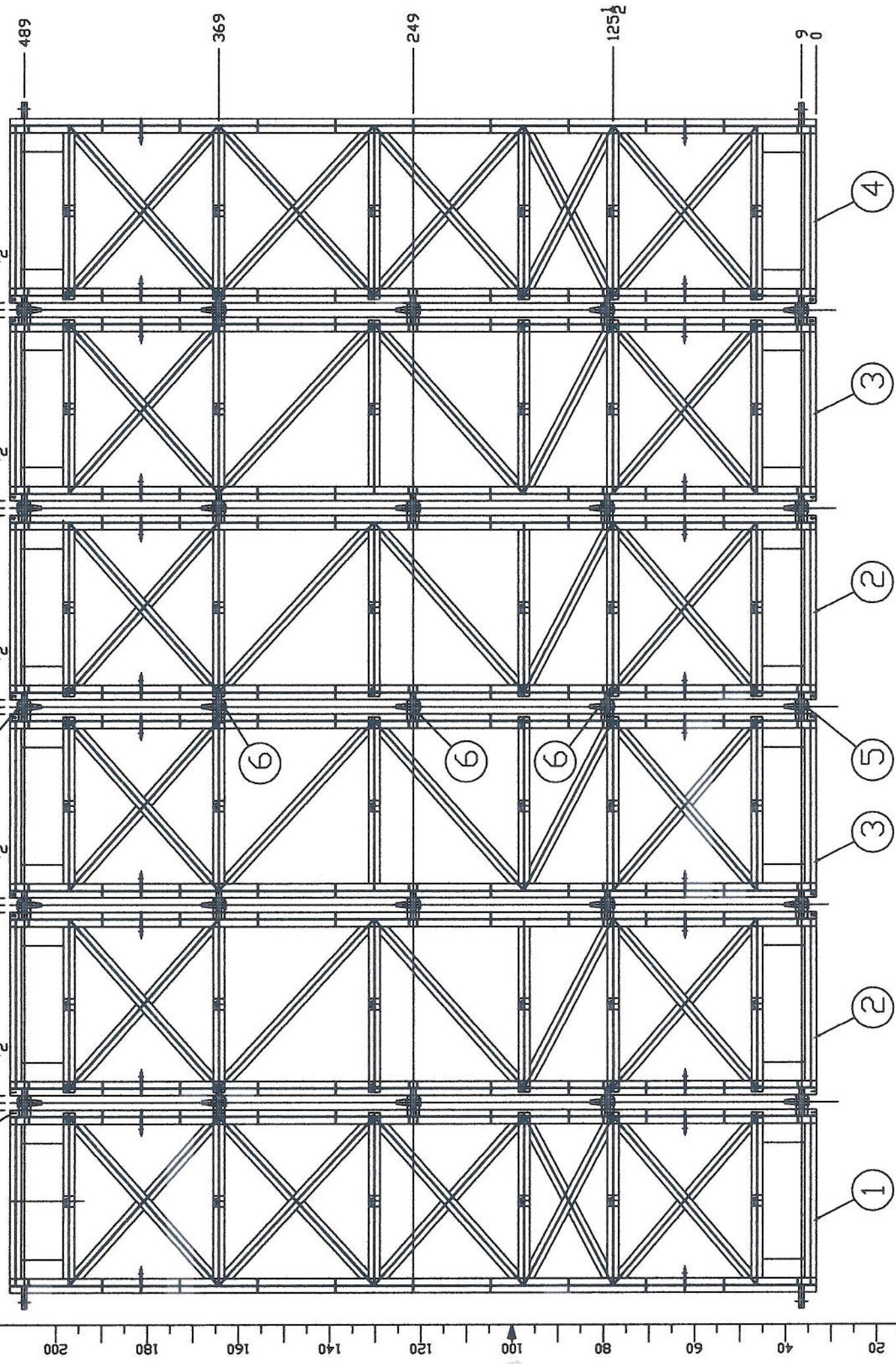
NOTE:
 ALL DIMS ARE TO CENTER OF
 CONTAINER ANCHORS.
 (SUPPLIED BY DRILLERS)

WEIGHT (LBS)	MATERIAL	HEAT TREATMENT	FINISH	NO	BY	DATE	REVISION
							DRILLERS RIG 5
UNLESS NOTED OTHERWISE ALL TOLERANCES AS FOLLOWS							
@-CONCENTRICITY .005 IN ±-CONCENTRICITY ±.005 IN ±-TRUE POSITION .005 IN ±-STRAGHTNESS ±.005 IN ±-PARALLELISM ±.010 IN ±-FINISHED SURFACES 200 MAX REMOVE ALL SHARP CORNERS AND BURRS							
UNLESS NOTED OTHERWISE ALL TOLERANCES AS FOLLOWS DECIMALS: ±.000 FRACTIONS: ±1/32 WELDMENTS & CASTINGS ± 1/16 ANGULAR ±1°							
THE INFORMATION CONTAINED ON THIS DOCUMENT IS NOT TO BE REPRODUCED OR TRANSMITTED IN ANY FORM OR BY ANY MEANS, ELECTRONIC OR MECHANICAL, INCLUDING PHOTOCOPYING, RECORDING, OR BY ANY INFORMATION STORAGE AND RETRIEVAL SYSTEM, WITHOUT PERMISSION IN WRITING FROM DRILLERS TECHNOLOGY CORP. THE INFORMATION CONTAINED ON THIS DOCUMENT ARE RECEIVED BY DRILLERS TECHNOLOGY CORP.							
CONTAINER ANCHORS LOCATION DVG				RHC/23/01/03		SCALE NTS	
DRILLERS TECHNOLOGY CORP. CALGARY CANADA				JOB NO 0116		SHEET 01	

INCH 0 1 2 3 4 5 6 7 8 9 10

QTY	ITEM NO	PART NUMBER	DESCRIPTION	SPECIFICATION	CODE
1	1	0111	SKID SECTION / TYPE A	-	BT-100
2	2	0112	SKID SECTION / TYPE B	-	BT-100
2	3	0113	SKID SECTION / TYPE C	-	BT-100
1	4	0114	SKID SECTION / TYPE D	-	BT-100
10	5	0109	CONNECTION - 2 PIN	-	BT-100
15	6	0108	CONNECTION - 1 PIN	-	BT-100

NOTE:
WELD 4" HIGH MATCHING NUMBERS
ON THE 4 CORNERS OF EACH CONNECTION
TO ENSURE MATCHING JOINTS ON FIELD ASSY

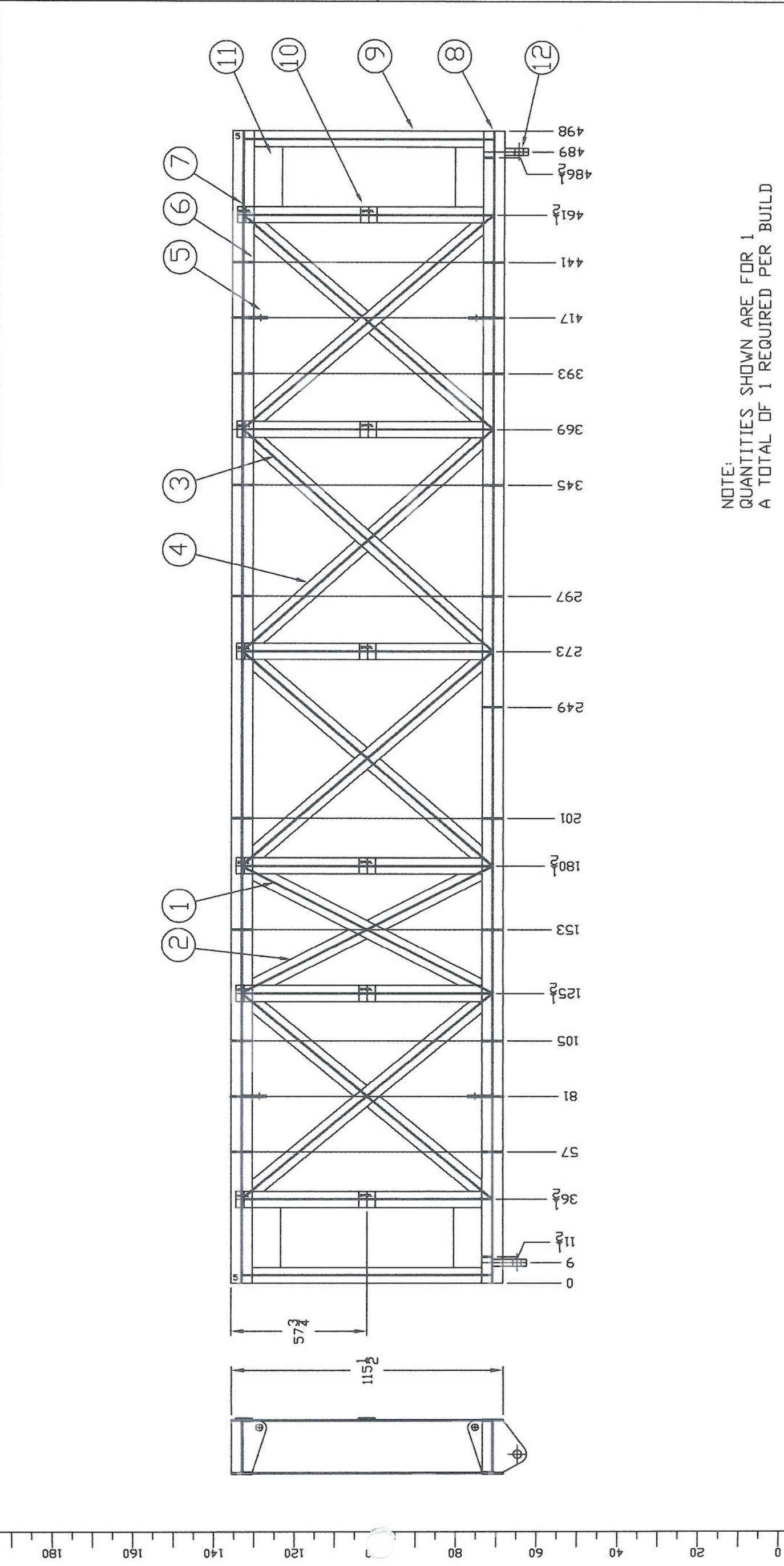


NOTE:
QUANTITIES SHOWN ARE FOR 1
A TOTAL OF 1 REQUIRED PER BUILD



WEIGHT (LBS)	MATERIAL	HEAT TREATMENT	FINISH	NO	BY	DATE	REVISION
UNLESS NOTED OTHERWISE ALL TOLERANCES AS FOLLOWS							
① - CONCENTRICITY ± 0.005							
② - PERPENDICULARITY ± 0.005							
③ - SQUARENESS ± 0.005							
④ - STRAIGHTNESS ± 0.005 IN 8 INCHES							
⑤ - PARALLELISM ± 0.010 IN 8 INCHES							
⑥ - SURFACE FINISH: 320 RA							
⑦ - MACHINED SURFACES: 63 RA							
⑧ - ALL SHARP CORNERS AND EDGES: R0.015							
⑨ - THE WEIGHTS CONTAINED ON THIS DRAWING ARE ESTIMATED AND ARE NOT TO BE USED FOR ORDERING MATERIAL. ALL WEIGHTS TO BE OBTAINED WITHOUT THE WEIGHT FROM ONE OF OUR QUALIFIED TECHNOLOGY COMPANIES. ALL WEIGHTS TO BE OBTAINED WITHOUT THE WEIGHT FROM ONE OF OUR QUALIFIED TECHNOLOGY COMPANIES.							
DRILLERS RIG 5							
SKID ARRANGEMENT							
RHC/23/01/03							
0115							

ITEM NO	PART NUMBER	DESCRIPTION	SPECIFICATION	CODE
1	VF 24 @ 95 X 118-1/2" LG		GSA G40.21-44V	DT-XXX
2	VF 24 @ 95 X 59" LG		GSA G40.21-44V	DT-XXX
3	VF 24 @ 95 X 139-1/2" LG		GSA G40.21-44V	DT-XXX
4	VF 24 @ 95 X 69-1/2" LG		GSA G40.21-44V	DT-XXX
5	LUG/LIFTING			DT-XXX
6	1/2 X X 4-1/2 X 22-1/2		-PL 44V	DT-XXX
7	5/8 X 7 X 7		-PL 44V	DT-XXX
8	VF 4876 X 498" (41-1/2)		-GSA G40.21-44V	DT-XXX
9	VF 24 @ 95 X 106" LG		GSA G40.21-44V	DT-XXX
10	3/4 X 7 X 7		-PL 44V	DT-XXX
11	1/2 X 12 X 26		-PL 44V	DT-XXX
12	LUG / CYLINDER			DT-XXX

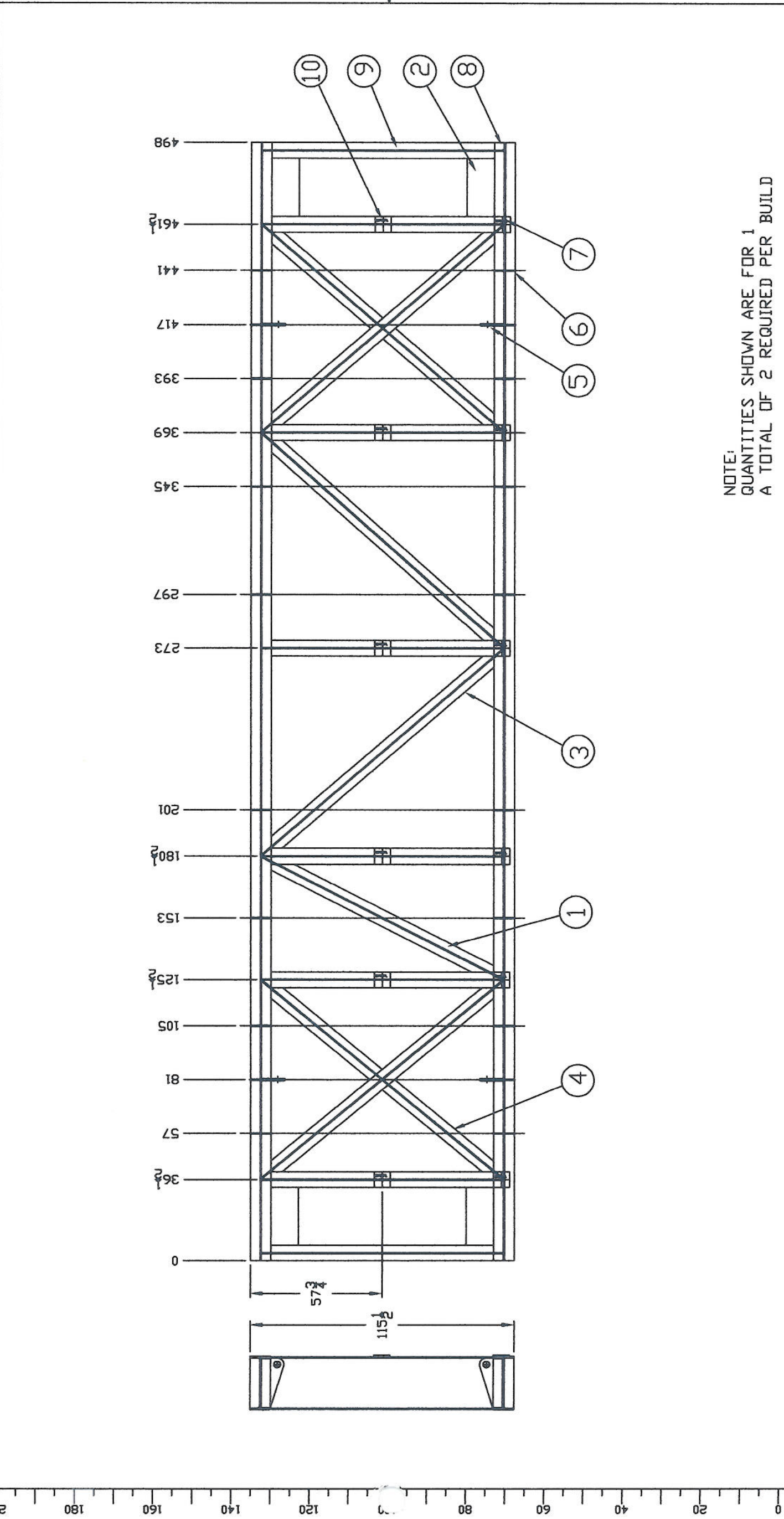



NOTE:
 QUANTITIES SHOWN ARE FOR 1
 A TOTAL OF 1 REQUIRED PER BUILD

WGT (LBS)	MATERIAL	HEAT TREATMENT	FINISH	NO	BY	DATE	REVISION
							DRILLERS RIG 5
UNLESS NOTED OTHERWISE ALL TOLERANCES AS FOLLOWS 0 - CONCENTRICITY .001 IN 5 INCHES 1 - SURFACE FINISH 32 IN 5 INCHES 2 - TRUE POSITION .005 3 - STRAIGHTNESS ±.005 IN 5 INCHES 4 - PARALLELISM ±.010 IN 5 INCHES 5 - MACHINED SURFACES 200 MAX REMOVE ALL SHARP CORNERS AND BURRS							
PROTECTION 30° ANGLE							
TYPE 'D' SKID SECTION							
SCALE NTS							
DRG NO 0114 SHEET 08							

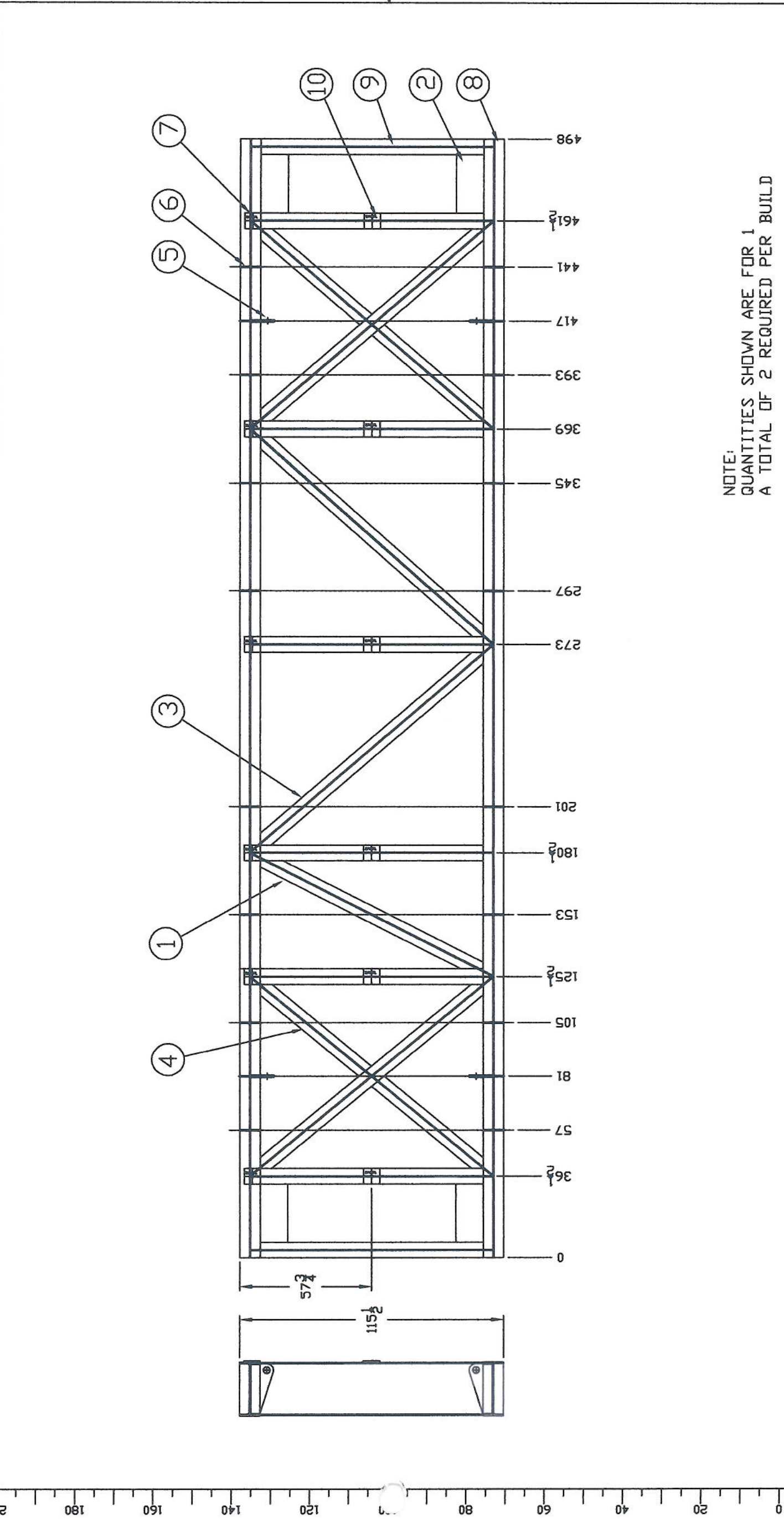


ITEM NO.	QTY	PART NUMBER	DESCRIPTION	SPECIFICATION	CODE
1	1	VF 24 @ 55 X 118-1/2' LG		GSA G4021-44V	DT-XXX
2	1	1/2 X 12 X 26		-PL 44V	DT-XXX
3	3	VF 24 @ 55 X 139-1/2' LG		GSA G4021-44V	DT-XXX
4	4	VF 24 @ 55 X 69-1/2' LG		GSA G4021-44V	DT-XXX
5	4	6102	LUG/LIFTING		DT-XXX
6	6	1/2 X X 4-1/2 X 22-1/2		-PL 44V	DT-XXX
7	6	5/8 X 7 X 7		-PL 44V	DT-XXX
8	2	VF24876 X 498' (41-1/2')		-GSA G4021-44V	DT-XXX
9	8	VF 24 @ 55 X 106' LG		GSA G4021-44V	DT-XXX
10	6	3/4 X 7 X 7		-PL 44V	DT-XXX



DRILLERS RIG 5	NO	BY	DATE	REVISION
 DRILLERS TECHNOLOGY CORP. CALGARY CANADA				
TYPE 'C' SKID SECTION		SCALE RHC/08/23/03		
PROJECTOR		NTS		
UNLESS NOTED OTHERWISE ALL TOLERANCES AS FOLLOWS		DECIMALS: 0.000, 0.005, 0.010 FRACTIONS: 1/32, 1/16 WELDMENTS & CASTINGS: 1/16 ANGULAR: ±1° REMOVE ALL SHARP CORNERS AND BURRS		
NOTE: THE INFORMATION CONTAINED ON THIS DOCUMENT IS NOT TO BE REPRODUCED OR DISSEMINATED WITHOUT THE WRITTEN PERMISSION OF DRILLERS TECHNOLOGY CORP. ALL RIGHTS TO THE INFORMATION CONTAINED ON THIS DOCUMENT ARE RESERVED BY DRILLERS TECHNOLOGY CORP.				
WEIGHT (LBS)	MATERIAL	HEAT TREATMENT	FINISH	NO

QTY	REF	PART NUMBER	DESCRIPTION	SPECIFICATION	CODE
1	1	VF 24 @ 55 X 118-1/2" LG		GSA G4021-44V	DT-XXX
0	2	1/2 X 12 X 26		-PL 44V	DT-XXX
4	3	VF 24 @ 55 X 139-1/2" LG		GSA G4021-44V	DT-XXX
0	4	VF 24 @ 55 X 69-1/2" LG		GSA G4021-44V	DT-XXX
4	5	010E	LUG/LIFTING		DT-XXX
24	6	1/2 X 4 X 4-1/2 X 22-1/2		-PL 44V	DT-XXX
6	7	5/8 X 7 X 7		-PL 44V	DT-XXX
2	8	VF24076 X 498" (41-1/2")		-GSA G4021-44V	DT-XXX
0	9	VF 24 @ 55 X 106" LG		GSA G4021-44V	DT-XXX
6	10	3/4 X 7 X 7		-PL 44V	DT-XXX

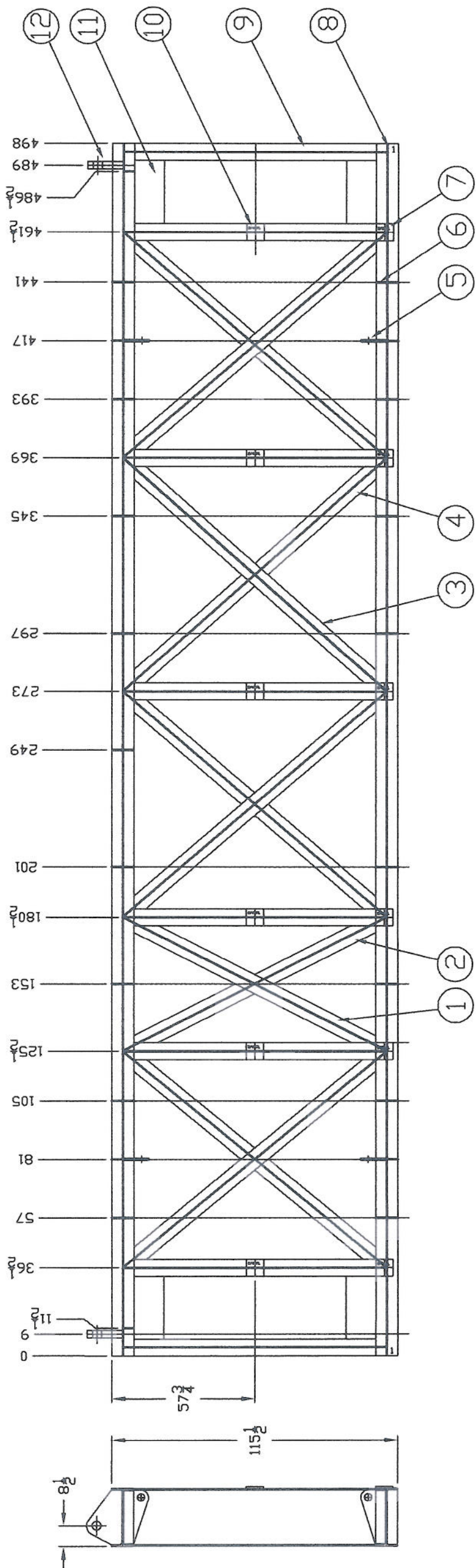


NOTE:
 QUANTITIES SHOWN ARE FOR 1
 A TOTAL OF 2 REQUIRED PER BUILD

WGT (LBS)	MATERIAL	HEAT TREATMENT	FINISH	NO	BY	DATE	REVISION
							DRILLERS RIG 5
UNLESS NOTED OTHERWISE ALL TOLERANCES AS FOLLOWS DIMENSIONS IN INCHES DECIMALS: .00 ±.0030 FRACTIONS: 1/32 WELDMENTS & CASTINGS ± 1/16 ANGULAR ±1° REMOVE ALL SHARP CORNERS AND BURRS							
PROJECTION 5/8 ANGLE							
TYPE 'B' SKID SECTION							
SCALE: 1/4" = 1'-0" DATE: RHC/23/01/03 DRAWING NO: 0112 SHEET: 01 OF 01							
DRILLERS TECHNOLOGY CORP. CALGARY CANADA							

PD

QTY	ITEM NO	PART NUMBER	DESCRIPTION	SPECIFICATION	CODE
1	1	VF 24 @ 55 X 118-1/2" LG		GSA G4021-44V	DT-XXX
2	2	VF 24 @ 55 X 99" LG		GSA G4021-44V	DT-XXX
4	3	VF 24 @ 55 X 139-1/2" LG		GSA G4021-44V	DT-XXX
8	4	VF 24 @ 55 X 69-1/2" LG		GSA G4021-44V	DT-XXX
4	5	0102	LUG/LIFTING		DT-XXX
39	6	1/2 X 4-1/2 X 22-1/2		-PL 44V	DT-XXX
6	7	5/8 X 7 X 7		-PL 44V	DT-XXX
2	8	VF 24@76 X 498" (41-1/2")		-GSA G4021-44V	DT-XXX
8	9	VF 24 @ 55 X 106" LG		GSA G4021-44V	DT-XXX
6	10	3/4 X 7 X 7		-PL 44V	DT-XXX
8	11	1/2 X 12 X 26		-PL 44V	DT-XXX
2	12	0101	LUG / CYLINDER		DT-XXX



NOTE:
 QUANTITIES SHOWN ARE FOR 1
 A TOTAL OF 1 REQUIRED PER BUILD

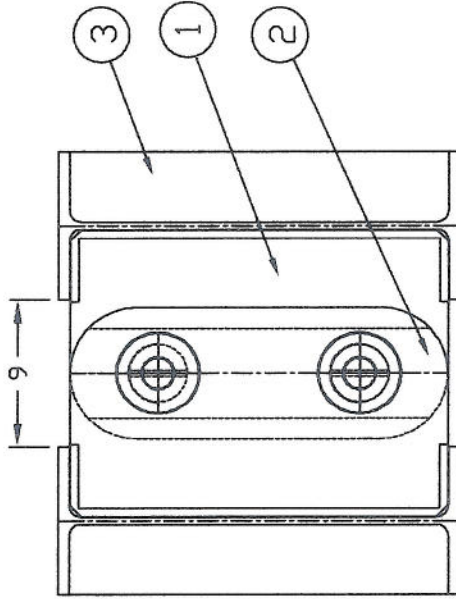
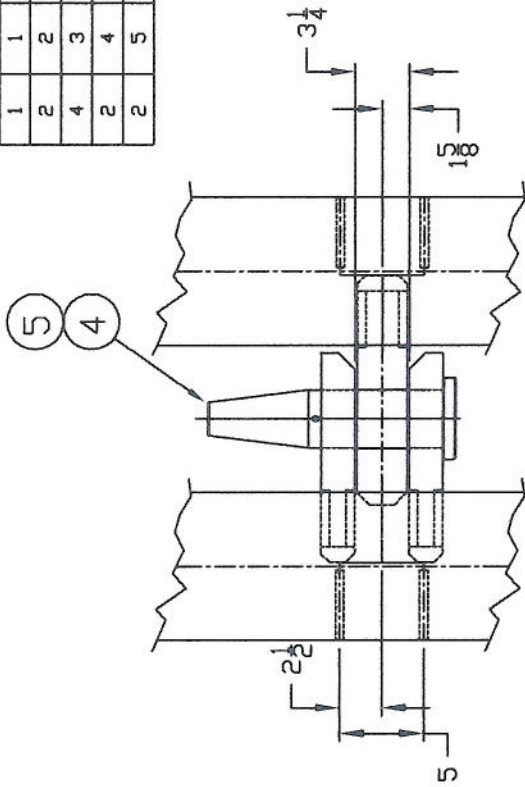
WGT (LBS)	MATERIAL	HEAT TREATMENT	FINISH	NO	BY	DATE	REVISION
							DRILLERS RIG 5
UNLESS NOTED OTHERWISE ALL TOLERANCES AS FOLLOWS O - CONCENTRIC ±.005 DIA S - SQUARENESS ±.005 IN 5 INCHES P - TRUE POSITION .005 A - STRAIGHTNESS ±.005 IN 5 INCHES H - PARALLELISM ±.010 IN 5 INCHES F - MACHINED SURFACES 200 MAX REMOVE ALL SHARP CORNERS AND BURRS							
PROJECTION 3/8 ANGLE							
TYPE 'A' SKID SECTION							
SCALE NTS							
DRW NO 0111 SHEET OF							



DRILLERS
 TECHNOLOGY INC.
 CALGARY CANADA

INCH 0 1 2 3 4 5 6 7 8 9 10
 PD

QTY	ITEM NO	PART NUMBER	DESCRIPTION	SPECIFICATION	CODE
1	0104	LUG-1 PIN/CONNECTING MALE			DT-XXX
2	0103	LUG-1 PIN / CONNECTING - FEMALE			DT-XXX
4	3	1/2" TK X 4-1/4 X 22-1/2	PLATE 44-V		DT-XXX
2	4	PIN - CONNECTING			DT-XXX
2	5	COTTER PIN 3/8" X 4" LG	SPAE - NAUR CP-54		DT-XXX



NOTE:
 JOINT IS TO BE WELDED WITH MATING SKID
 IN POSITION TO ENSURE JOINT ALIGNMENT.
 AT THIS TIME WELD NUMBERS ON SKID
 TO ENSURE MATING AT FIELD ASSY.
 (FOR LOCN SEE MAIN ASSY DWG 0100)

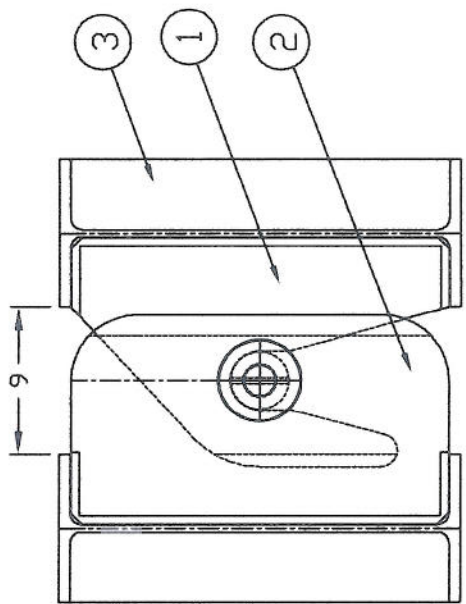
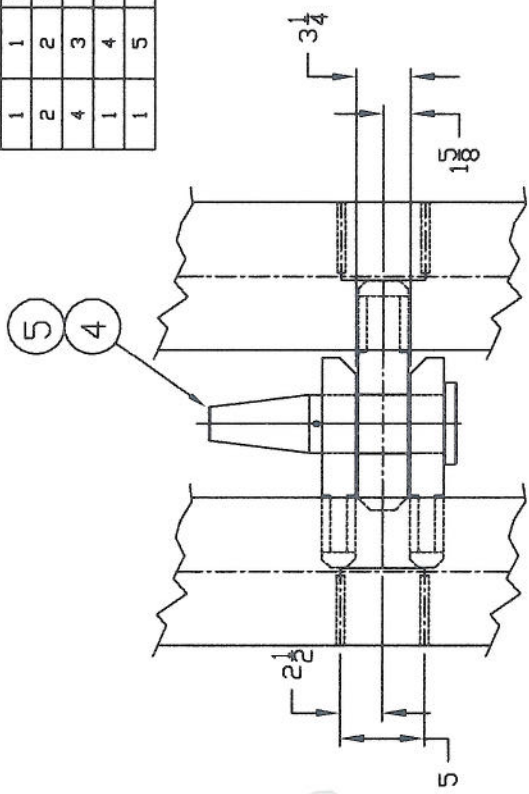
NOTE:
 QUANTITIES SHOWN ARE FOR 1
 A TOTAL OF 10 REQD PER BUILD

WEIGHT (LBS)	MATERIAL	HEAT TREATMENT	FINISH	NO	BY	DATE	REVISION
							DRILLERS RIG 5
UNLESS NOTED OTHERWISE ALL TOLERANCES AS FOLLOWS DIMENSIONS IN 3 INCHES DECIMALS: .00 ±.003 .000 ±.010 FRACTIONS ±1/32 WELDMENTS & CASTINGS ± 1/16 ANGULAR ±1° REMOVE ALL SHARP CORNERS AND BURRS							
NOTE: THE INFORMATION CONTAINED ON THIS DOCUMENT IS NOT TO BE REPRODUCED OR DISCLOSED WITHOUT THE WRITTEN PERMISSION OF DRILLERS TECHNOLOGY CORP. ALL RIGHTS TO THE INFORMATION CONTAINED ON THIS DOCUMENT ARE RESERVED BY DRILLERS TECHNOLOGY CORP.							
PROJECTION FIRST ANGLE				JOINT ASSY CONNECTION-2 PIN			
DRG: RHC 22/01/03 GJK				SCALE: 1/4" APP:			
				DRG NO: 0109 SHEET: 08			



INCH 0 1 2 3 4 5 6 7 8 9 10
 PD

-0	ITEM NO	PART NUMBER	DESCRIPTION	SPECIFICATION	CODE
1	1	0107	LUG-1 PIN/CONNECTING MALE		DT-XXX
2	2	0106	LUG-1 PIN / CONNECTING - FEMALE		DT-XXX
4	3		1/2" TK X 4-1/4 X 22-1/2	PLATE 44-V	DT-XXX
1	4	0105	PIN - CONNECTING		DT-XXX
1	5		COTTER PIN 3/8Ø X 4" LG	SPAE - NAUR CP-54	DT-XXX



NOTE:
 JOINT IS TO BE WELDED WITH MATING SKID
 IN POSITION TO ENSURE JOINT ALIGNMENT.

 AT THIS TIME WELD NUMBERS ON SKID
 TO ENSURE MATING AT FIELD ASSY.
 (FOR LOCN SEE MAIN ASSY DWG 0100)

NOTE:
 QUANTITIES SHOWN ARE FOR 1
 A TOTAL OF 15 REQD PER BUILD

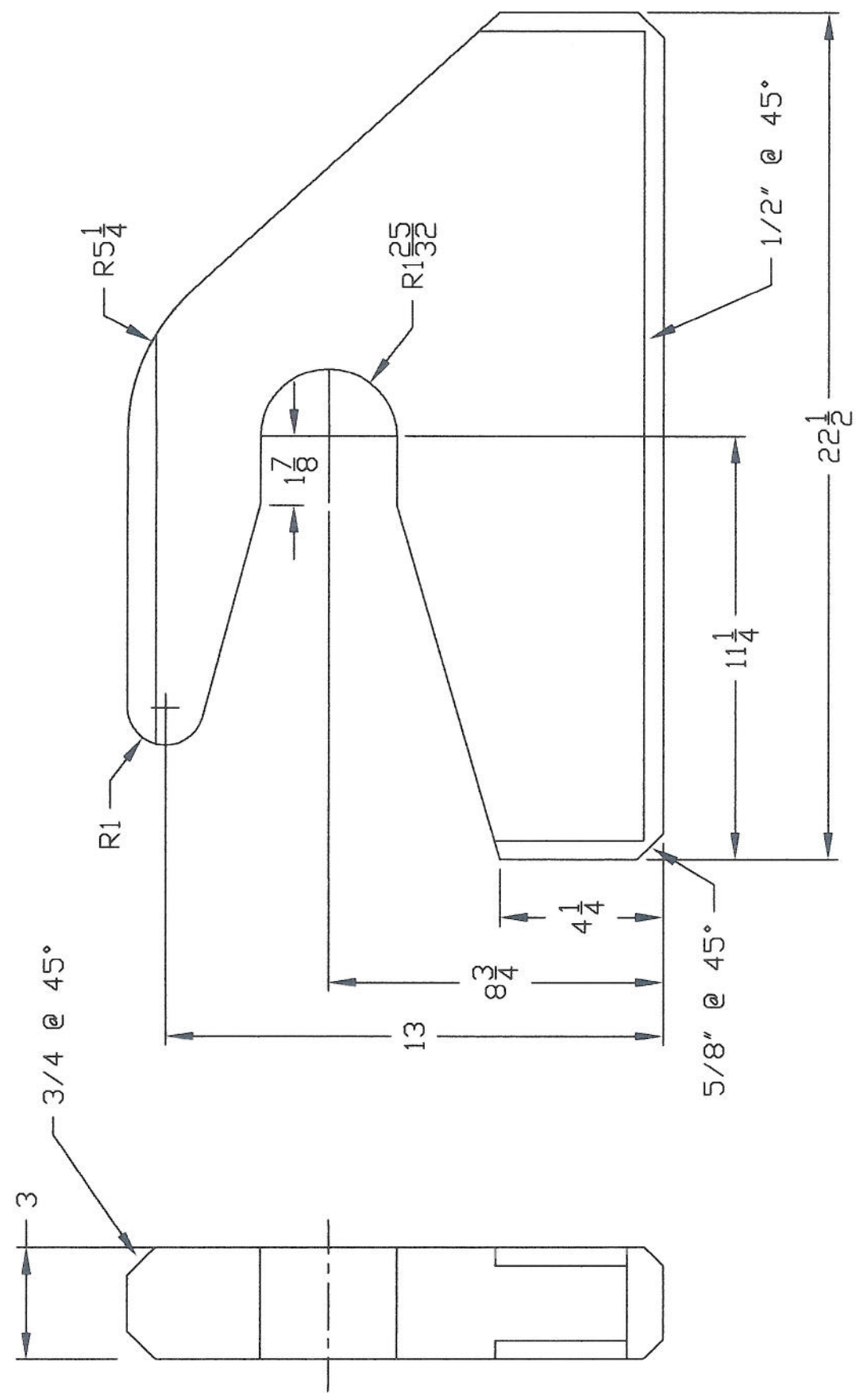
WEIGHT (LBS)	MATERIAL	HEAT TREATMENT	FINISH	NO	BY	DATE	REVISION
							DRILLERS RIG 5
UNLESS NOTED OTHERWISE ALL TOLERANCES AS FOLLOWS Ø - CONCENTRICITY .005 TR □ - SQUARENESS ±.010 IN 5 INCHES ⚭ - TRUE POSITION .005 ⌒ - STRAIGHTNESS ±.005 IN 5 INCHES ⌒ - SURFACE FINISH 125 ⌒ - MACHINED SURFACES 200 MAX REMOVE ALL SHARP CORNERS AND BURRS PROJECTION HOLE ANGLE CHAMFER							
NOTE: THE INFORMATION CONTAINED ON THIS DOCUMENT IS NOT TO BE REPRODUCED OR OTHERWISE USED IN ANY MANNER WITHOUT THE WRITTEN PERMISSION OF DRILLERS TECHNOLOGY CORP. THE INFORMATION CONTAINED ON THIS DOCUMENT ARE RESERVED BY DRILLERS TECHNOLOGY CORP.							
				RHC 22/01/03		SCALE 1/4"	DWG NO 0108
				APP		SHEET	OF



PO

MM 0 20 40 60 80 100 120 140 160 180 200

ITEM NO		PART NUMBER	DESCRIPTION	SPECIFICATION	CODE
-0	QTY				
1	1	3" TK X 13-1/2 X 22-1/2	CT-100 HTSR	DT-XXX	

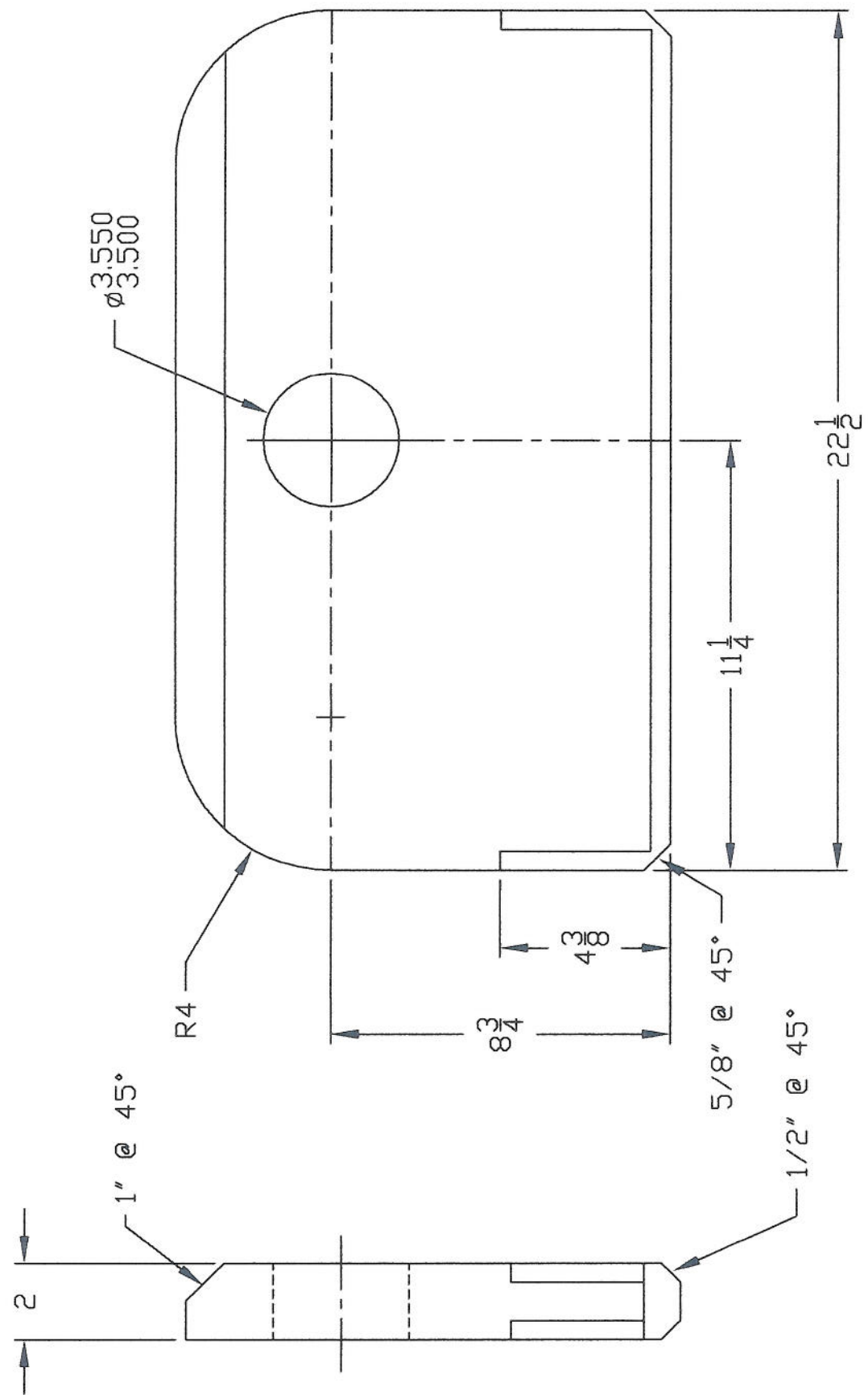


NOTE:
 QUANTITIES SHOWN ARE FOR 1
 A TOTAL OF 15 REQD PER BUILD

WEIGHT (LBS)	MATERIAL	HEAT TREATMENT	FINISH	NO	BY	DATE	REVISION	
							DRILLERS RIG 5	
UNLESS NOTED OTHERWISE ALL TOLERANCES AS FOLLOWS DECIMALS: 0 ±.060 .00 ±.030 .000 ±.010 FRACTIONS ±1/32 WELDMENTS & CASTINGS ± 1/16 ANGULAR ±1° REMOVE ALL SHARP CORNERS AND BURRS				CONNECTING - MALE LUG-1 PIN				DRW
@ - CONCENTRICITY .005 TIR 1 - SQUARENESS ±.010 IN 5 INCHES TRUE POSITION .005 STRAIGHTNESS ±.005 IN 5 INCHES PARALLELISM ±.010 IN 5 INCHES MACHINED SURFACES 200 MUMAX				PROJECTION 3RD ANGLE				SCALE
NOTE: THE INFORMATION CONTAINED ON THIS DOCUMENT IS NOT TO BE REPRODUCED OR DISCLOSED WITHOUT THE WRITTEN PERMISSION OF DRILLERS TECHNOLOGY CORP. ALL RIGHTS TO THE INFORMATION CONTAINED ON THIS DOCUMENT ARE RESERVED BY DRILLERS TECHNOLOGY CORP.				RHC 22/01/03				1/4
				DRW APP SHEET 0107 OF				



-0		ITEM NO	PART NUMBER	DESCRIPTION	SPECIFICATION	CODE
GTY						
1		1	2" TK X 12-3/4 X 22-1/2	CT-100 HTSR	DT-XXX	



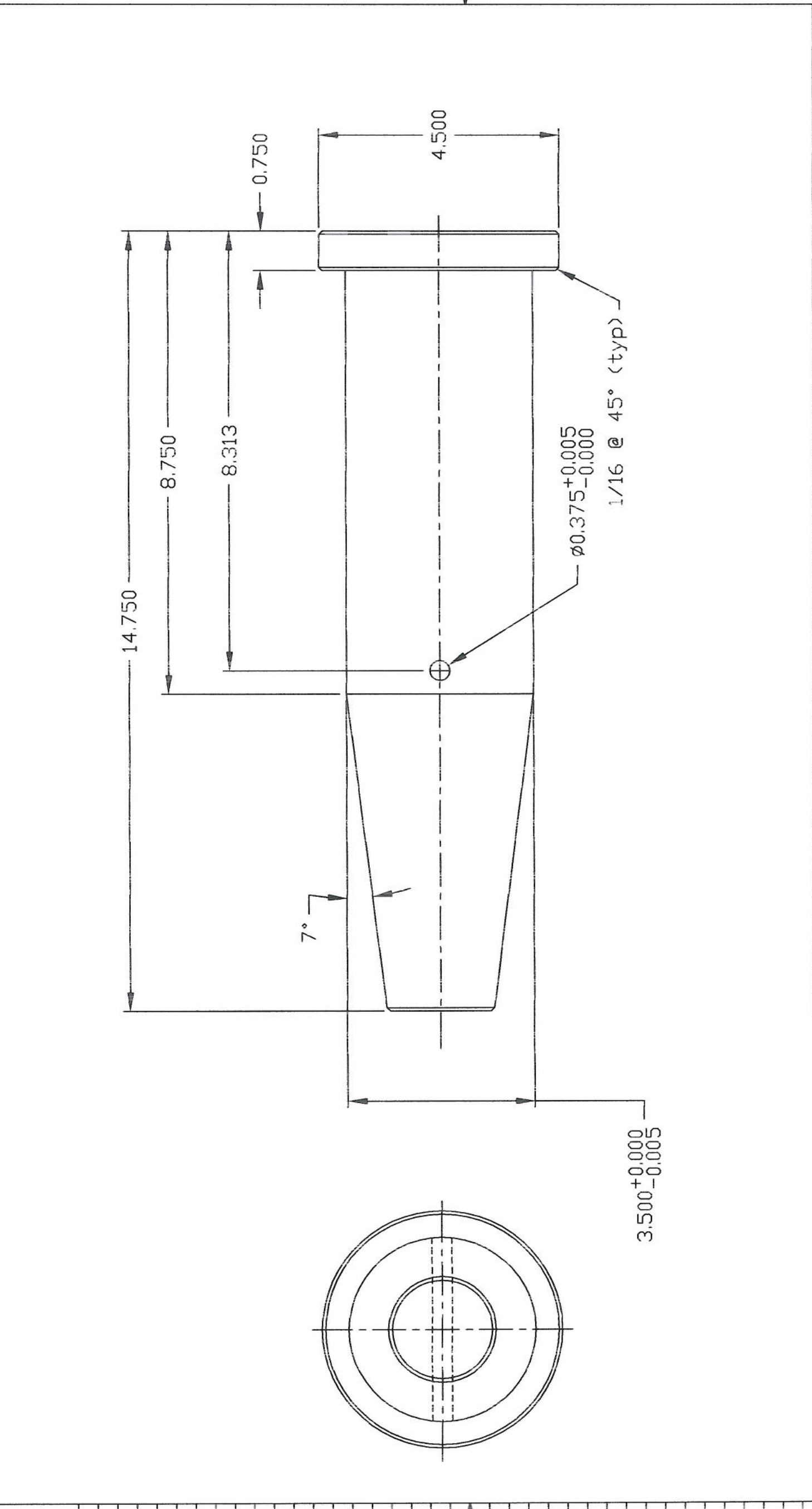
NOTE:
 QUANTITIES SHOWN ARE FOR 1
 A TOTAL OF 30 REQD PER BUILD

WEIGHT (LBS)	MATERIAL	HEAT TREATMENT	FINISH	NO	BY	DATE	REVISION
							DRILLERS RIG 5
UNLESS NOTED OTHERWISE ALL TOLERANCES AS FOLLOWS ○ - CONCENTRICITY .005 TIR □ - SQUARENESS ±.010 IN 5 INCHES ⊕ - TRUE POSITION .005 - - STRAIGHTNESS ±.005 IN 5 INCHES - PARALLELISM ±.010 IN 5 INCHES / - MACHINED SURFACES 200 MUMAX REMOVE ALL SHARP CORNERS AND BURRS				CONNECTING - FEMALE LUG-1 PIN			
DECIMALS: 0 ±.060 .00 ±.030 .000 ±.010 FRACTIONS ±1/32 WELDMENTS & CASTINGS ± 1/16 ANGULAR ±1°				SCALE 1/4 APP			
NOTE: THE INFORMATION CONTAINED ON THIS DOCUMENT IS NOT TO BE REPRODUCED OR DISCLOSED WITHOUT THE WRITTEN PERMISSION OF DRILLERS TECHNOLOGY CORP. ALL RIGHTS TO THE INFORMATION CONTAINED ON THIS DOCUMENT ARE RESERVED BY DRILLERS TECHNOLOGY CORP.				DRN RHC 22/01/03 CHK			
				DWG NO 0106 SHEET OF		DRILLERS TECHNOLOGY CORP CALGARY CANADA	

INCH PD 0 1 2 3 4 5 6 7 8 9 10

MM 0 20 40 60 80 100 120 140 160 180 200

-0		ITEM NO	PART NUMBER	DESCRIPTION	SPECIFICATION	CODE
1						
1		1	4-1/2" DIA. X 14-3/4	4140 HTSR		

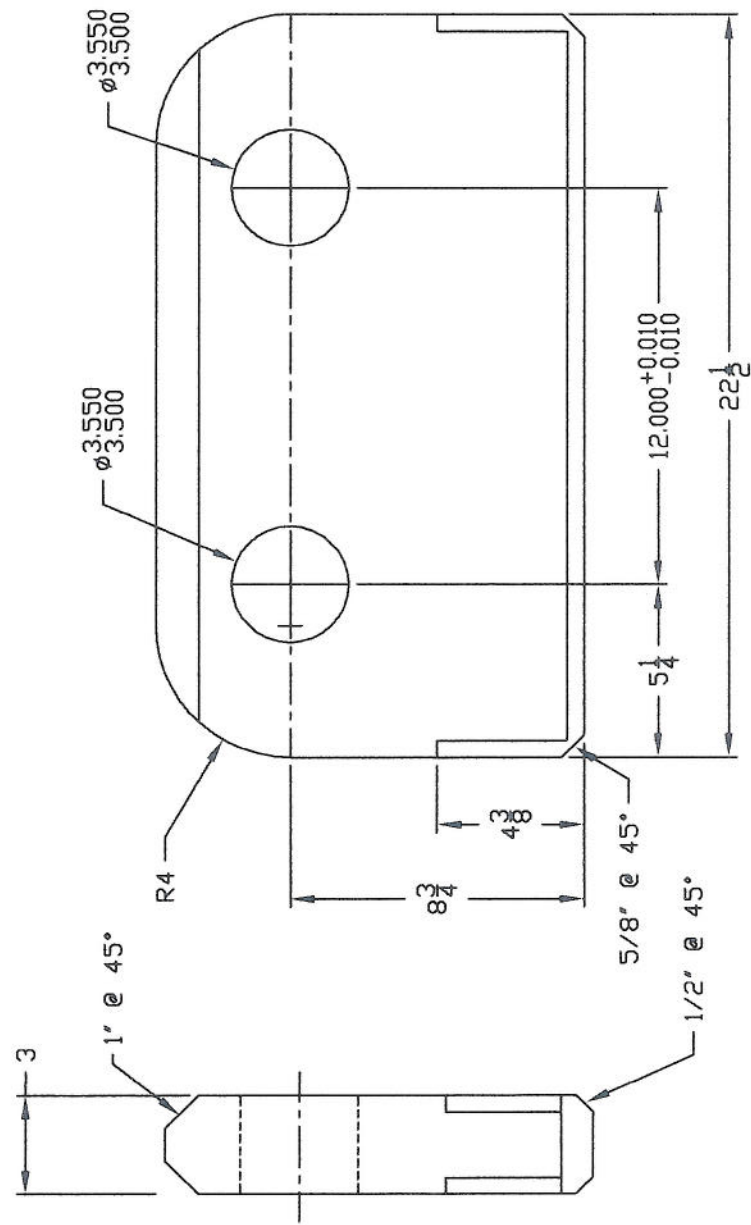


NOTE:
 QUANTITIES SHOWN ARE FOR 1
 A TOTAL OF 35 REQD PER BUILD

WEIGHT (LBS)	MATERIAL	HEAT TREATMENT	FINISH	NO	BY	DATE	REVISION		
							DRILLERS RIG 5		
UNLESS NOTED OTHERWISE ALL TOLERANCES AS FOLLOWS ⊕ - CONCENTRICITY .005 TIR L - SQUARENESS ±.010 IN 5 INCHES ⚭ - TRUE POSITION .005 - - STRAIGHTNESS ±.005 IN 5 INCHES - PARALLELISM ±.010 IN 5 INCHES / - MACHINED SURFACES 200 MUMAX REMOVE ALL SHARP CORNERS AND BURRS.				CONNECTING PIN SCALE 1/4 DRN RHC 21/01/03 CHK APP				DRW NO 0105 SHEET OF	
PROJECTION 				UNLESS NOTED OTHERWISE ALL TOLERANCES AS FOLLOWS DECIMALS: .0 ±.060 .00 ±.030 .000 ±.010 FRACTIONS ±1/32 WELDMENTS & CASTINGS ± 1/16 ANGULAR ±1°				DRILLERS TECHNOLOGY CORP CALGARY CANADA	
NOTE: THE INFORMATION CONTAINED ON THIS DOCUMENT IS NOT TO BE REPRODUCED OR DISCLOSED WITHOUT THE WRITTEN PERMISSION OF DRILLERS TECHNOLOGY CORP. ALL RIGHTS TO THE INFORMATION CONTAINED ON THIS DOCUMENT ARE RESERVED BY DRILLERS TECHNOLOGY CORP.									



ITEM NO	QTY	PART NUMBER	DESCRIPTION	SPECIFICATION	CODE
0	1		3" TK X 12-3/4 X 22-1/2	CT-100 HTSR	DT-XXX



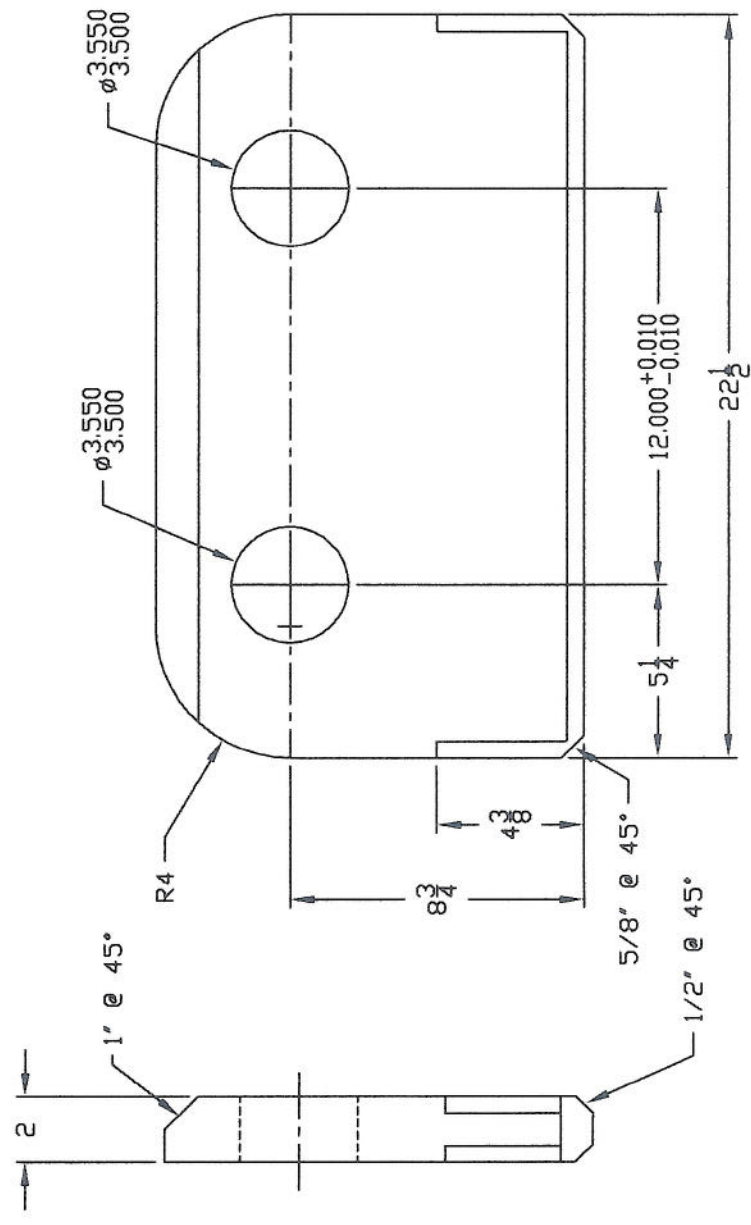
WEIGHT (LBS)	MATERIAL	HEAT TREATMENT	FINISH	NO	BY	DATE	REVISION
							DRILLERS RIG 5
UNLESS NOTED OTHERWISE ALL TOLERANCES AS FOLLOWS 0 - CONCENTRICITY ±.005 IN 5 INCHES 1 - TRUE POSITION ±.005 IN 5 INCHES 2 - STRAIGHTNESS ±.005 IN 5 INCHES 3 - PARALLELISM ±.010 IN 5 INCHES 4 - MACHINED SURFACES 200 MAX REMOVE ALL SHARP CORNERS AND BURRS							
NOTE: THE INFORMATION CONTAINED ON THIS DOCUMENT IS NOT TO BE REPRODUCED OR DISCLOSED WITHOUT THE WRITTEN PERMISSION OF DRILLERS TECHNOLOGY CORP. ALL RIGHTS TO THE INFORMATION CONTAINED ON THIS DOCUMENT ARE RESERVED BY DRILLERS TECHNOLOGY CORP.							
CONNECTING - MALE LUG-2 PIN				SCALE 1/4"		DWG NO 0104	
DR RHC 21/01/03				APP		SHEET 6	

NOTE:
 QUANTITIES SHOWN ARE FOR 1
 A TOTAL OF 10 REQD PER BUILD





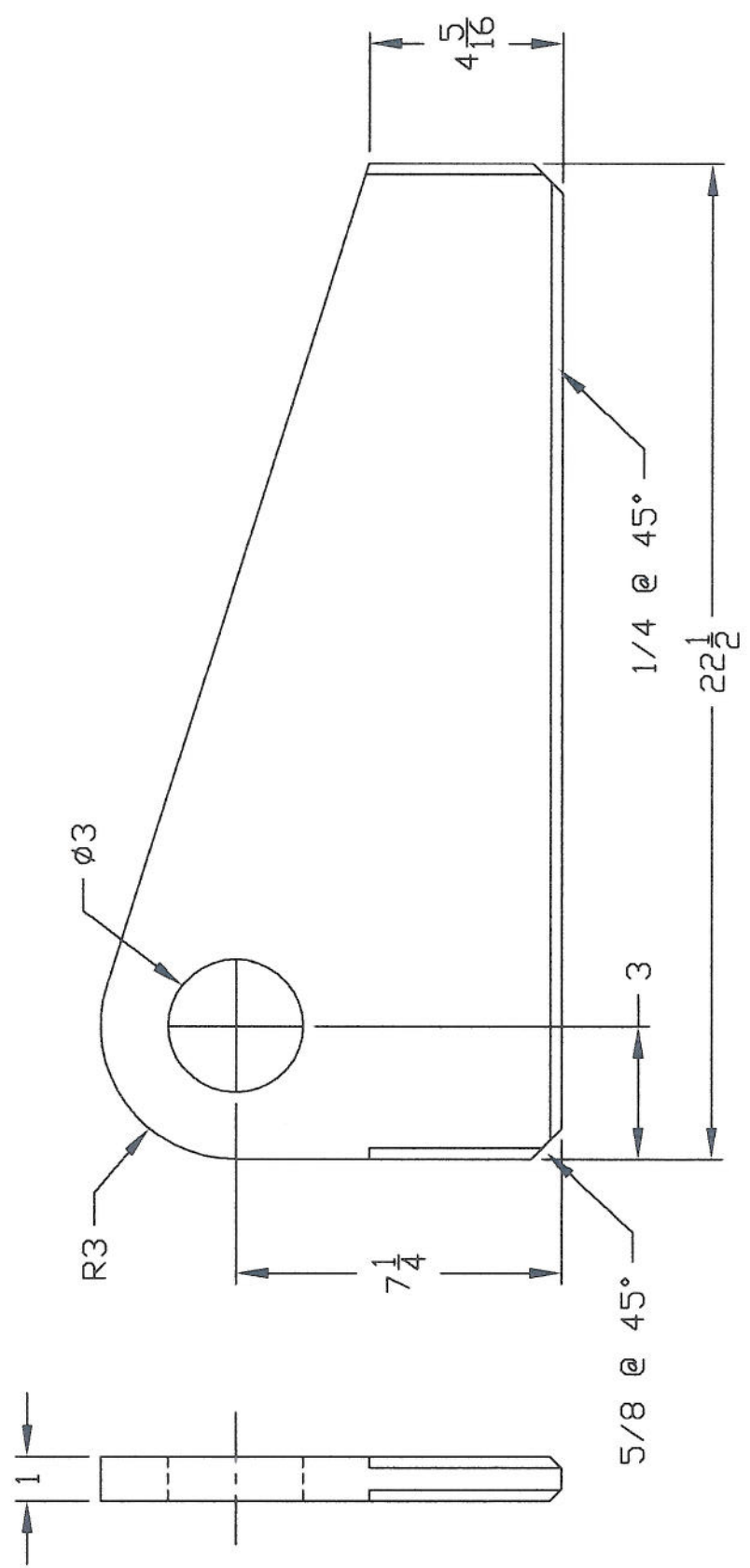
ITEM NO	QTY	PART NUMBER	DESCRIPTION	SPECIFICATION	CODE
1	1	2" TK X 12-3/4 X 22-1/2		CT-100 HTSR	DT-XXX



WEIGHT (LBS)	MATERIAL	HEAT TREATMENT	FINISH	NO	BY	DATE	REVISION
							DRILLERS RIG 5
UNLESS NOTED OTHERWISE ALL TOLERANCES AS FOLLOWS 0 - CONCENTRICITY ±.005 IN 5 INCHES 1 - TRUE POSITION ±.005 2 - STRAIGHTNESS ±.005 IN 5 INCHES 3 - PARALLELISM ±.010 IN 5 INCHES 4 - MACHINED SURFACES 200 MAX REMOVE ALL SHARP CORNERS AND BURRS							
PROJECTION 3/8" ANGLE 1/8" ANGLE							
NOTE: THE INFORMATION CONTAINED ON THIS DOCUMENT IS NOT TO BE REPRODUCED OR DISCLOSED WITHOUT THE WRITTEN PERMISSION OF DRILLERS TECHNOLOGY CORP. ALL RIGHTS TO THE INFORMATION CONTAINED ON THIS DOCUMENT ARE RESERVED BY DRILLERS TECHNOLOGY CORP.							
CONNECTING - FEMALE LUG-2 PIN RHC 21/01/03 SCALE 1/4" DRG NO 0103 SHEET 08							

NOTE:
 QUANTITIES SHOWN ARE FOR 1
 A TOTAL OF 20 REQD PER BUILD

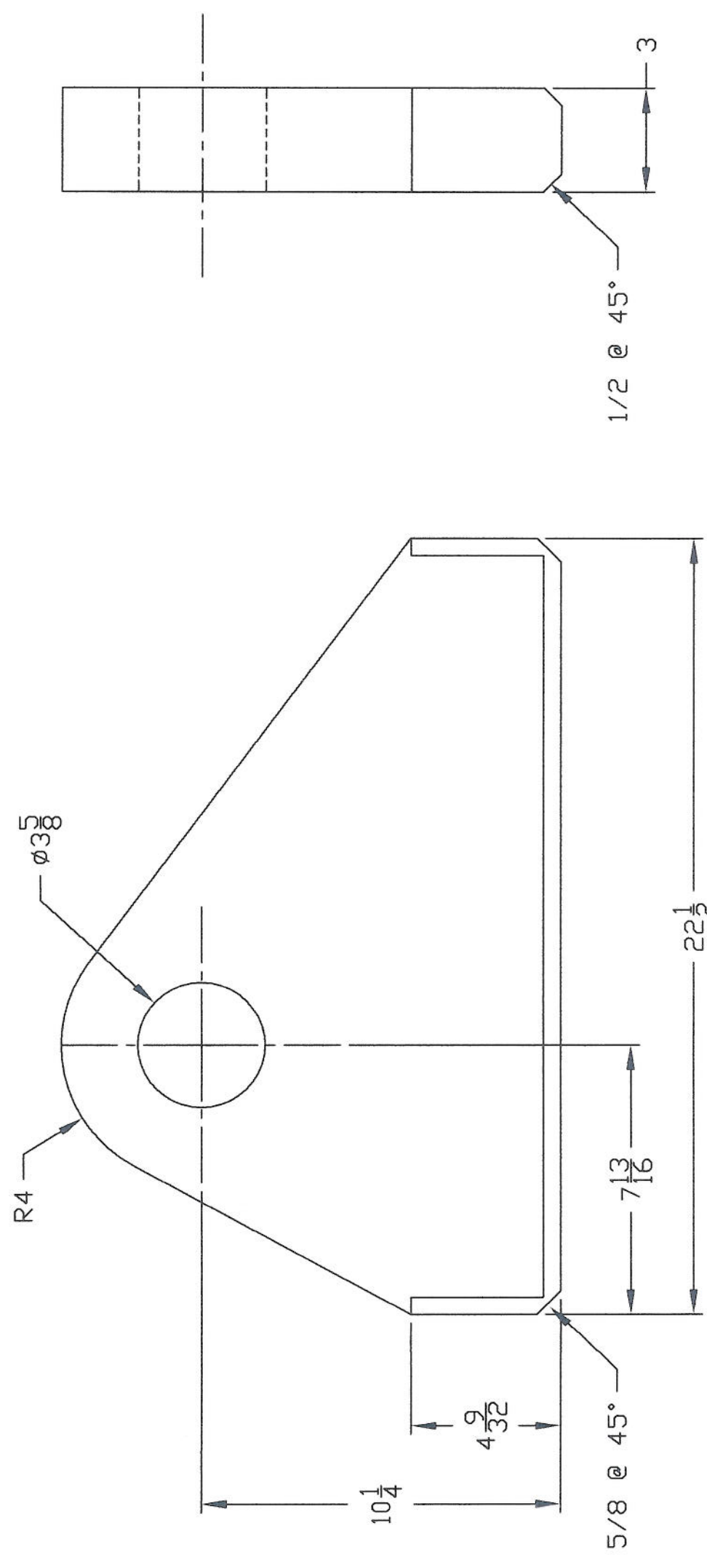
-0		ITEM NO	PART NUMBER	DESCRIPTION	SPECIFICATION	CODE
1						



NOTE:
 QUANTITIES SHOWN ARE FOR 1
 A TOTAL OF 24 REQD PER BUILD

WEIGHT (LBS)	MATERIAL	HEAT TREATMENT	FINISH	NO	BY	DATE	REVISION
							DRILLERS RIG 5
UNLESS NOTED OTHERWISE ALL TOLERANCES AS FOLLOWS DECIMALS: 0 ±.060 .00 ±.030 .000 ±.010 FRACTIONS ±1/32 WELDMENTS & CASTINGS ± 1/16 ANGULAR ±1° REMOVE ALL SHARP CORNERS AND BURRS				LIFTING LUG SCALE 1/4 DRN RHC 21/01/03 APP		DRILLERS TECHNOLOGY CORP CALGARY CANADA DWG NO 0102 SHEET OF	
NOTE: THE INFORMATION CONTAINED ON THIS DOCUMENT IS NOT TO BE REPRODUCED OR DISCLOSED WITHOUT THE WRITTEN PERMISSION OF DRILLERS TECHNOLOGY CORP. ALL RIGHTS TO THE INFORMATION CONTAINED ON THIS DOCUMENT ARE RESERVED BY DRILLERS TECHNOLOGY CORP.				PROJECTION 2ND ANGLE			

-0		ITEM NO	PART NUMBER	DESCRIPTION	SPECIFICATION	CODE
1						



NOTE:
 QUANTITIES SHOWN ARE FOR 1
 A TOTAL OF 6 REQD PER BUILD

WEIGHT (LBS)	MATERIAL	HEAT TREATMENT	FINISH	NO	BY	DATE	REVISION	
							DRILLERS RIG 5	
UNLESS NOTED OTHERWISE ALL TOLERANCES AS FOLLOWS DECIMALS: .0 ±.060 .00 ±.030 .000 ±.010 FRACTIONS ±1/32 WELDMENTS & CASTINGS ± 1/16 ANGULAR ±1° REMOVE ALL SHARP CORNERS AND BURRS				CYLINDER LUG SCALE 1/4 DRN RHC 21/01/03 APP				DRILLERS TECHNOLOGY CORP CALGARY CANADA
NOTE: THE INFORMATION CONTAINED ON THIS DOCUMENT IS NOT TO BE REPRODUCED OR DISCLOSED WITHOUT THE WRITTEN PERMISSION OF DRILLERS TECHNOLOGY CORP. ALL RIGHTS TO THE INFORMATION CONTAINED ON THIS DOCUMENT ARE RESERVED BY DRILLERS TECHNOLOGY CORP.				DWG NO 0101 SHEET OF				