



DeLorean DMC-12 LED Conversion List

Version 2

Created By: Jesse Baker, VIN 628

<https://www.TN-DMC.com>

Summary: This list is meant to provide a complete list of all compatible LED bulbs for the DMC-12 except for the Headlights. After using various online resources, I ran into incompatible issues on some bulbs. All bulbs in this list is confirmed working and are plug and play*.

Important Modification

*Applies to Bulb Type **74** and **194** ONLY that are used in Center Console and Binnacle*

*The 74 Bulbs used in the door markers **do not** require modification*

On the appropriate 74 and 194 bulbs, there are two wires that wrap over the wedge style base of each bulb. The vendor designed the bulb like this so that the orientation of the bulb into the socket would not matter. Unfortunately for us, in the DeLorean it does.



Bend both of these little wires and straighten them, then snip off the excess so that they do not wrap around the base.



At this point, there should only be one wire coming out of each side as shown below. The bulb is now ready to install. If it does not illuminate the first time, pull it out and turn it around.



Table of Contents

Exterior

Front Bumper: Turn Signals	5
Side Markers: Front	6
Side Markers: Rear	7
Taillights: Brake Lights	9
Taillights: Running Lights	10
Taillights: Turn Signals	11
Taillights: Reverse Lights	12
Flasher Relay	13

Gullwing Doors & Bonnet

Door Marker: Amber	15
Door Marker: Red	16
Bonnet Light	17

Interior & Center Console

Dome Lights.....	19
Glove Box	20
Automatic Shifter	21
Cigarette Lighter Ring	22
Hazard Switch.....	23
Headlight Switch	24
Fan Fail, Defrost, and Door Lock Indicators	25
A/C Panel.....	26

Binnacle

Binnacle Accent Lights	28
High Beam Indicator	29
Low Beam Indicator.....	30
Turn Signal Indicators.....	31
Low Fuel Indicator	32
E-Brake, Seatbelt, LAMBDA, Oil Pressure, and Door Ajar Indicators	33

Exterior

TN DMC
TN DELOREAN MOTOR CLUB

Front Bumper: Turn Signals



Vendor: Super Bright LEDs

Part Number: 1157-AHP28-T-2PK

Color: Amber

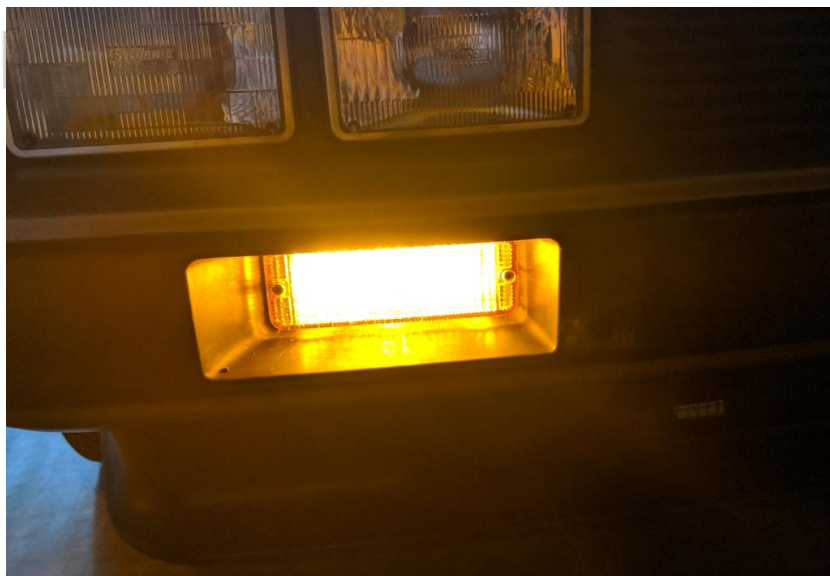
Price Each: \$15.90

Qty Needed: 2

Total Cost: \$15.90

URL: [\(2 Pack\) 1157 LED Bulb - Dual Function 28 SMD LED Tower - Amber](#)

Side Note: This is a pack of 2 bulbs. You will only need to purchase **one** of these.



Side Markers: Front



Vendor: Super Bright LEDs

Part Number: BA9S-AHP5

Color: Amber

Price Each: \$3.95

Qty Needed: 2

Total Cost: \$7.90

URL: [BA9s LED Bulb - 5 SMD LED Tower - Amber](#)



Side Markers: Rear



Vendor: Super Bright LEDs

Part Number: BA9S-RHP5

Color: Red

Price Each: \$3.95

Qty Needed: 2

Total Cost: \$7.90

URL: [BA9s LED Bulb - 5 SMD LED Tower - Red](#)



License Plate



Vendor: Super Bright LEDs

Part Number: 3710-CWHP3-V2

Color: Cool White

Price Each: \$3.95

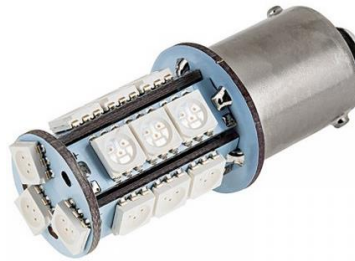
Qty Needed: 2

Total Cost: \$7.90

URL: [3710 LED Bulb - 3 SMD LED Festoon - 38mm](#)



Taillights: Brake Lights



Vendor: Super Bright LEDs

Part Number: 1156-R18-T-2PK

Color: Red

Price Each: \$11.90

Qty Needed: 4

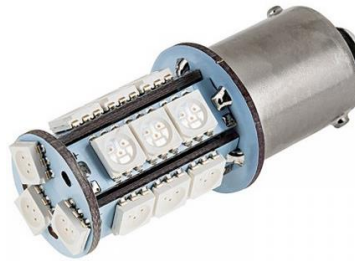
Total Cost: \$23.80

URL: [\(2 Pack\) 1156 LED Bulb - 18 SMD LED Tower - Red](#)

Side Note: This is a pack of 2 bulbs. You will only need to purchase **two** of these.



Taillights: Running Lights



Vendor: Super Bright LEDs

Part Number: 1156-R18-T-2PK

Color: Red

Price Each: \$11.90

Qty Needed: 2

Total Cost: \$11.90

URL: [\(2 Pack\) 1156 LED Bulb - 18 SMD LED Tower - Red](#)

Side Note: This is a pack of 2 bulbs. You will only need to purchase **one** of these.



Taillights: Turn Signals



Vendor: Super Bright LEDs

Part Number: 1156-A18-T-2PK

Color: Amber

Price Each: \$11.90

Qty Needed: 2

Total Cost: \$11.90

URL: [\(2 Pack\) 1156 LED Bulb - 18 SMD LED Tower - Amber](#)

Side Note: This is a pack of 2 bulbs. You will only need to purchase **one** of these.



Taillights: Reverse Lights



Vendor: Super Bright LEDs

Part Number: 1156-A18-T-2PK

Color: Cool 6400K

Price Each: \$11.90

Qty Needed: 2

Total Cost: \$11.90

URL: [\(2 Pack\) 1156 LED Bulb - 18 SMD LED Tower - Cool White](#)

Side Note: This is a pack of 2 bulbs. You will only need to purchase **one** of these.



Flasher Relay



Vendor: Super Bright LEDs

Part Number: CF13GL-02

Price Each: \$9.95

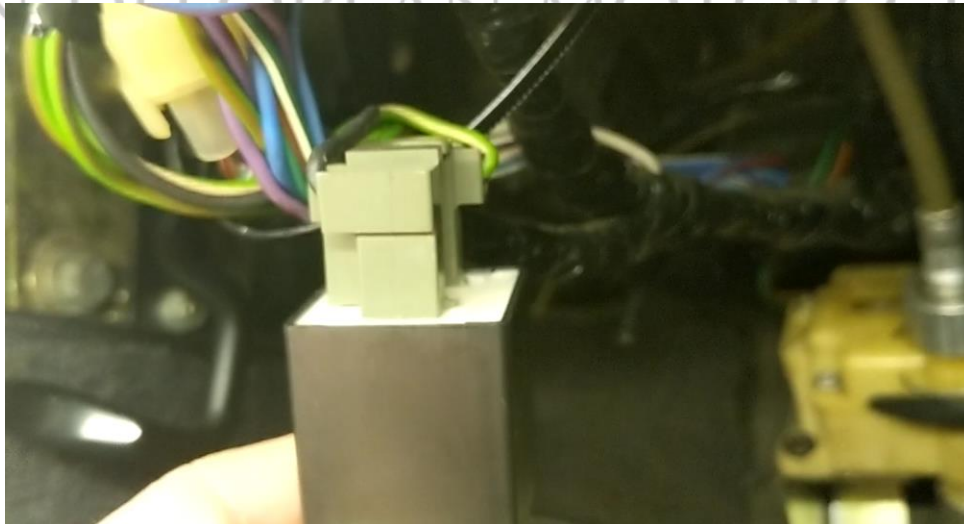
Qty Needed: 1

Total Cost: \$9.95

URL: [CF13GL-02 LED Bulb Electronic Flasher](#)

Side Note: **REQUIRED** for turn signals and hazard lights to function. This will replace the existing flasher relay and is designed for use with LEDs. Failure to install this will not result in any blinky blinky.

Installation: Driver Side. Under Dash. Note picture below - Find the harness going to the steering wheel and you will see a relay. Unplug the old relay and plug in new relay.



Gullwing

Doors

TN DELOREAN MOTOR CLUB

&

Bonnet

Door Marker: Amber



Vendor: Super Bright LEDs

Part Number: 194-A5

Color: Amber

Price Each: \$3.49

Qty Needed: 4

Total Cost: \$13.96

URL: [194 LED Landscape Light Bulb - 5 LED - Amber](#)

Side Note: You can choose whatever color you like as long as the door marker lenses match the bulb color or use clear lenses. The author of this list chose Blue.



Door Marker: Red



Vendor: Super Bright LEDs

Part Number: 194-R5

Color: Red

Price Each: \$3.49

Qty Needed: 2

Total Cost: \$6.98

URL: [194 LED Landscape Light Bulb - 5 LED - Red](#)

Side Note: You can choose whatever color you like as long as the door marker lenses match the bulb color or use clear lenses. The author of this list chose Blue.



Bonnet Light



Vendor: Super Bright LEDs

Part Number: 3710-CWHP6-V2

Color: Cool 6500K

Price Each: \$4.95

Qty Needed: 1

Total Cost: \$4.95

URL: [3710 LED Bulb - 6 SMD LED Festoon - 38mm - Cool 6500K](#)

Correct Color: Warm 3300K

Side Note: **COLOR CHOICE!** The correct color for this bulb is Warm 3300K which provides a warm contrast. The Cool 6500K has more blue in it and is nearly pure White with no blue or yellow contrast.



Interior

TN&MC
TN DELOREAN MOTOR CLUB

Center

Console

Dome Lights



Vendor: Super Bright LEDs

Part Number: 3710-CWHP6-V2

Color: Cool 6500K

Price Each: \$4.95

Qty Needed: 2

Total Cost: \$9.90

URL: [3710 LED Bulb - 6 SMD LED Festoon - 38mm – Cool 6500K](#)

Correct Color: Warm 3300K

Side Note: **COLOR CHOICE!** The correct color for this bulb is Warm 3300K which provides a warm contrast. The Cool 6500K has more blue in it and is nearly pure White with no blue or yellow contrast.



Glove Box



Vendor: DeLorean Go

Part Number: 101216A

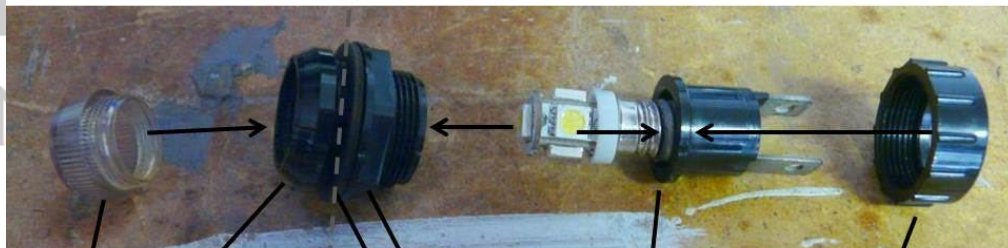
Color: Warm White

Price Each: \$3.75

Qty Needed: 1

Total Cost: \$3.75

URL: [Glove Box LED bulb](#)



1. Thread lens into the glove box housing

2. Push housing in, by itself, from inside of glove box.

3. Push in this washer, and thread this nut, from the outside of the glove box (to access, slide hand up dash), to the back of the housing.

4. Thread in LED bulb onto the socket part.

5. Slide this nut onto the socket, then insert socket and bulb into the housing, and thread the nut to the housing.

Automatic Shifter



Vendor: Super Bright LEDs

Part Number: BA7S-W

Color: Cool 6500K

Price Each: \$0.89

Qty Needed: 1

Total Cost: \$0.89

URL: [BA7s LED Bulb - 1 LED - Cool](#)

Side Note: **COLOR CHOICE!** While the correct color is white, you can install any color you wish.



Cigarette Lighter Ring



Vendor: Super Bright LEDs

Part Number: 74-NW

Color: Natural 4500K

Price Each: \$0.95

Qty Needed: 1

Total Cost: \$0.95

URL: [74 LED Bulb - 1 LED - White](#)

Side Note: **COLOR CHOICE!** While the correct color is white, you can install any color you wish.

IMPORTANT: The **Modification** for the 74/194 Bulb must be performed before installation. Failure to do this will result in a loss of functionality.

TN DELOREAN MOTOR CLUB

Hazard Switch



Vendor: Super Bright LEDs

Part Number: 74-R

Color: Red

Price Each: \$0.95

Qty Needed: 1

Total Cost: \$0.95

URL: [74 LED Bulb - 1 LED - Red](#)

Side Note: Remove the blue light filter in the cap of the switch.

IMPORTANT: The **Modification** for the 74/194 Bulb must be performed before installation. Failure to do this will result in a blow fuse every time the switch is triggered.



Headlight Switch



Vendor: Super Bright LEDs

Part Number: 74-G

Color: Green

Price Each: \$0.95

Qty Needed: 1

Total Cost: \$0.95

URL: [74 LED Bulb - 1 LED - Green](#)

Side Note: Remove the blue light filter in the cap of the switch.

Side Note: **COLOR CHOICE!** While the correct color is white, you can install any color you wish. The author of this list chose Blue.

IMPORTANT: The **Modification** for the 74/194 Bulb must be performed before installation. Failure to do this will result in a blow fuse every time the switch is triggered.



Fan Fail, Defrost, and Door Lock Indicators



Vendor: Super Bright LEDs

Part Number: BA7S-R

Color: Red

Price Each: \$0.89

Qty Needed: 3

Total Cost: \$2.67

URL: [BA7s LED Bulb - 1 LED - Red](#)



A/C Panel



Vendor: Super Bright LEDs

Part Number: BA7S-G

Color: Green

Price Each: \$0.89

Qty Needed: 6

Total Cost: \$5.34

URL: [BA7s LED Bulb - 1 LED - Green](#)

Side Note: **COLOR CHOICE!** While the correct color is green, you can install any color you wish. The author of this list chose Blue.



Binnacle

TN3MC
TN DELOREAN MOTOR CLUB

Binnacle Accent Lights



Vendor: Super Bright LEDs

Part Number: 194-W-120

Color: Cool 7500K

Price Each: \$0.99

Qty Needed: 5

Total Cost: \$4.95

URL: [194 LED Bulb - 1 LED - Cool White](#)

Side Note: **COLOR CHOICE!** While the correct color is white, you can install any color you wish.

IMPORTANT: The **Modification** for the 74/194 Bulb must be performed before installation. Failure to do this will result in a loss of functionality.



High Beam Indicator



Vendor: Super Bright LEDs

Part Number: 194-B-120

Color: Blue

Price Each: \$0.99

Qty Needed: 1

Total Cost: \$0.99

URL: [194 LED Bulb - 1 LED - Blue](#)

IMPORTANT: The **Modification** for the 74/194 Bulb must be performed before installation. Failure to do this will result in a loss of functionality.



Low Beam Indicator



Vendor: Super Bright LEDs

Part Number: 194-G-120

Color: Green

Price Each: \$0.99

Qty Needed: 1

Total Cost: \$0.99

URL: [194 LED Bulb - 1 LED - Green](#)

IMPORTANT: The **Modification** for the 74/194 Bulb must be performed before installation. Failure to do this will result in a loss of functionality.

Side Note: If you live in a State/County where you do not have annual inspections/emissions testing, you can leave this bulb out. The author of this list has done this because at night, this bulb is blinding.

TN DELOREAN MOTOR CLUB

Turn Signal Indicators



Vendor: Super Bright LEDs

Part Number: 194-G-120

Color: Green

Price Each: \$0.99

Qty Needed: 2

Total Cost: \$1.98

URL: [194 LED Bulb - 1 LED - Green](#)

IMPORTANT: The **Modification** for the 74/194 Bulb must be performed before installation. Failure to do this will result in a loss of functionality.

Required: LED Flasher Relay



Low Fuel Indicator



Vendor: Super Bright LEDs

Part Number: 194-A-120

Color: Amber

Price Each: \$0.99

Qty Needed: 1

Total Cost: \$0.99

URL: [194 LED Bulb - 1 LED - Amber](#)

IMPORTANT: The **Modification** for the 74/194 Bulb must be performed before installation. Failure to do this will result in a loss of functionality.

TN DMC
TN DELOREAN MOTOR CLUB

E-Brake, Seatbelt, LAMBDA, Oil Pressure, and Door Ajar Indicators



Vendor: Super Bright LEDs

Part Number: 194-R-120

Color: Red

Price Each: \$0.99

Qty Needed: 5

Total Cost: \$4.95

URL: [194 LED Bulb - 1 LED - Red](#)

IMPORTANT: The **Modification** for the 74/194 Bulb must be performed before installation. Failure to do this will result in a loss of functionality.

THE MOST IMPORTANT SIDE NOTE: **DO NOT** under any circumstances change the battery bulb to an LED. This bulb must remain an incandescent 161 Type bulb. **Failure** to keep the incandescent 161 Bulb in proper working order will result in **loss of alternator charging**. With that said, if this bulb does not illuminate, you will experience a severe lack of voltage on the gauge in addition to a dead battery if the car continues to be driven.

