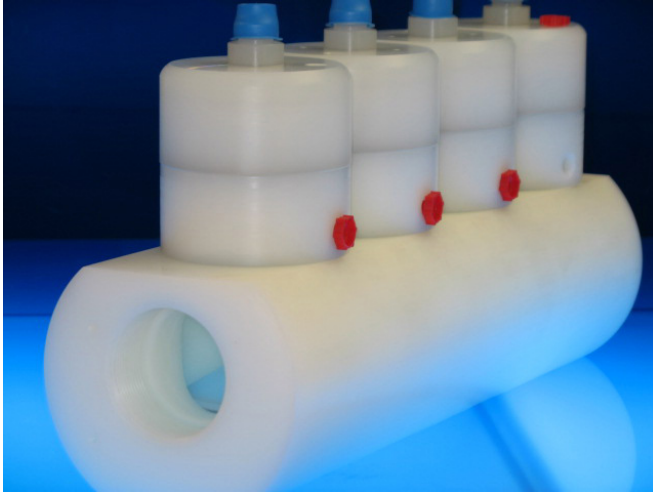


LARGE ORIFICE DRAIN VALVE



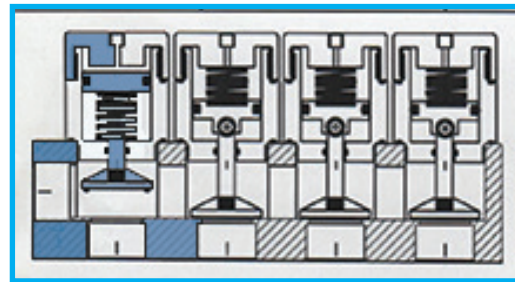
PVC

POLYPROPYLENE

PVDF

NACOM'S DV series large orifice Drain Valves are versatile and may be ordered in air to open / air to close or spring return models. Additionally, the user may select from 2 way, 3 way or 4 way configurations, where each port may be independently activated for maximum utilization.

For aggressive chemical applications, the DV series drain valve may be ordered with PVDF Body construction and Kalrez o'rings. Since pricing varies due to fluctuating material costs please consult factory for ordering information.



orifice size	inlet / outlet	body material	oring material				
				2 way	3 way	4 way	

Air to Open and Air to Close

orifice size	inlet / outlet	body material	oring material	2 way	3 way	4 way	
1"	1" FNPT	PVC	Ethylene propylene	NA-DVPVC1600-EP	NA-DVPVC1601-EP	NA-DVPVC1602-EP	
1"	1" FNPT	POLYPROPYLENE	Ethylene propylene	NA-DVPOL1600-EP	NA-DVPOL1601-EP	NA-DVPOL1602-EP	
1"	1" FNPT	PVDF	Kalrez	NA-DVPVDF1600-KA	NA-DVPVDF1601-KA	NA-DVPVDF1602-KA	
1-1/2"	1-1/2" FNPT	PVC	Ethylene propylene	NA-DVPVC1700-EP	NA-DVPVC1701-EP	NA-DVPVC1702-EP	
1-1/2"	1-1/2" FNPT	POLYPROPYLENE	Ethylene propylene	NA-DVPOL1700-EP	NA-DVPOL1701-EP	NA-DVPOL1702-EP	
1-1/2"	1-1/2" FNPT	PVDF	Kalrez	NA-DVPVDF1700-KA	NA-DVPVDF1701-KA	NA-DVPVDF1702-KA	
2"	2" FNPT	PVC	Ethylene propylene	NA-DVPVC2000-EP	NA-DVPVC2001-EP	NA-DVPVC2002-EP	
2"	2" FNPT	POLYPROPYLENE	Ethylene propylene	NA-DVPOL2000-EP	NA-DVPOL2001-EP	NA-DVPOL2002-EP	
2"	2" FNPT	PVDF	Kalrez	NA-DVPVDF2000-KA	NA-DVPVDF2001-KA	NA-DVPVDF2002-KA	

Air to Open and Spring to Close

orifice size	inlet / outlet	body material	oring material	2 way	3 way	4 way	
1"	1" FNPT	PVC	Ethylene propylene	NA-DVPVC1800C-EP	NA-DVPVC1801OC-EP	NA-DVPVC1802OCC-EP	
1"	1" FNPT	POLYPROPYLENE	Ethylene propylene	NA-DVPOL1800C-EP	NA-DVPOL1801OC-EP	NA-DVPOL1802OCC-EP	
1"	1" FNPT	PVDF	Kalrez	NA-DVPVDF1800C-KA	NA-DVPVDF1801OC-KA	NA-DVPVDF1802OCC-KA	
1-1/2"	1-1/2" FNPT	PVC	Ethylene propylene	NA-DVPVC1900C-EP	NA-DVPVC1901OC-EP	NA-DVPVC1902OCC-EP	
1-1/2"	1-1/2" FNPT	POLYPROPYLENE	Ethylene propylene	NA-DVPOL1900C-EP	NA-DVPOL1901OC-EP	NA-DVPOL1902OCC-EP	
1-1/2"	1-1/2" FNPT	PVDF	Kalrez	NA-DVPVDF1900C-KA	NA-DVPVDF1901OC-KA	NA-DVPVDF1902OCC-KA	
2"	2" FNPT	PVC	Ethylene propylene	NA-DVPVC2100C-EP	NA-DVPVC2101OC-EP	NA-DVPVC2102OCC-EP	
2"	2" FNPT	POLYPROPYLENE	Ethylene propylene	NA-DVPOL2100C-EP	NA-DVPOL2101OC-EP	NA-DVPOL2102OCC-EP	
2"	2" FNPT	PVDF	Kalrez	NA-DVPVDF2100C-KA	NA-DVPVDF2101OC-KA	NA-DVPVDF2102OCC-KA	

Media Pressure	Media Temperature	Operating Pressure	Oring Material	Cv factor
20 psi	PVC 140 degrees F / 60 degrees C Polypropylene 160 degrees F / 80 degrees C	45-60 PSI	Ethylene propylene (std)	1" orifice 12 1-1/2" orifice 30 2" orifice 43

