

GORILLA PUMP STATIONS

Further and Faster



Eco Water Solutions

2025 Version Nine

Gorilla Pump Stations

Product Catalogue

- **Sewer** ● **Storm Water** ● **Grey Water**
 - **Submersible Pumps**
 - **Pump Stations**
 - **Transparent Non-Return Valves**
 - **High/Low-Level Alarms**
 - **Certified Tank Solutions**
 - **Bespoke Designs and Manufacturing**

PO Box 18 Foxton Beach

021 745 335 www.gorillapumpstations.co.nz

All details are correct at the time of printing, but are subject to change For the latest specifications please visit our website www.gorillapumpstations.co.nz

Ecoline Range

140L Greywater and Sewer Pump Station

A cost-effective solution for sewerage and greywater. Our 'Ecoline' station comes pre-plumbed with a transparent non-return valve, a 50mm electrical outlet for 50mm ducting, a vent kit and a mac-union for easy disassembly and inspection.

The pit-box can be buried in-ground, and comes with a pedestrian-rated lid.

Name	Flow Rate	Specifications
EL140-3 Sewer Vortex	50 L/m @ 9.4m 100 L/m @ 8.4m 150 L/m @ 7.2m 200 L/m @ 6m 250 L/m @ 4.5m	650mm x 450mm x 800mm high HIGH VOLUME Sewer pump station. Comes with 40mm non return valve and mac union. Up to 32mm soft solids. Vortex high-volume pump. 100mm inlet connector included.
EL140-7 Chopper 750W	50 L/m @ 14m 100 L/m @ 12m 150 L/m @ 9m 200 L/m @ 5m	650mm x 450mm x 800mm high HIGH VOLUME Sewer pump station. Comes with 40mm non return valve and mac union. Cast iron high volume pump. 100mm inlet connector included. TPG-100 chopper pump included. Cuts down to 10mm

40mm outlet

Pre-plumbed with transparent non-return valve

50mm electrical outlet for 50mm ducting

40mm fitted mac union

Pedestrian rated solid lid

50mm vent kit

For Human Waste and Toilet Tissue Only– No Sanitary Products



Discounts for Ecoline range available for five units and over.

280L/340L Twin Sewer/ Greywater Pump Stations

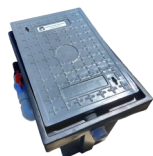
TW280	Tank & pump. 900x650x800 Solid Removeable Lids	Non-return valve fitted 1x 110mm rubber seal inlet 50mm electrical outlet with ducting including cable seal. PVC outlet pipe -40mm Mac Union for easy disconnection Ball valve with 40mm mac union 50mm electrical connection with seal kit to connect to 50mm electrical ducting supplied. 50mm vent pipe connection outlet supplied
TW340	900x650x1000	Solid Lid
TW280-3		
TW340-3	750w Vortex Pump	With VH100 vortex pump.
TW280-7	1 HP heavy duty cast iron chopper pump. Cuts to 10mm diameter	With TPG-100 chopper pump
TW340-7		Chopper pump cuts down to 10mm
Optional Extras		
GPS Alarm	High Level/ Low Level Alarm System	Complete with float and power lead. Kit set. 230V. Sounds alarm at plumber's pre-set level. Must be installed by a registered electrician.



- Pre plumbed with 40mm Mac Union and ball valve
- 50mm vent pipe connection included
- 50mm electrical outlet sealed to ducting
- Pedestrian rated lid
- Human Waste and Toilet Tissue Only (No Sanitary Products)

Silverback Range

Gorilla Pump Station 'Silverbacks' are easy to install units suitable for your retail customers.



The Little Silverback: 115L		
Code	Pump	Description
LSB1	Vortex 750W	Size: 650mmx450mmx600 mm
LSBTW1 <i>Twin</i>	Vortex 750W	Size: 900mmx650mmx600 mm
LSBTW7 <i>Twin</i>	Chopper 750W	Size: 900mmx650mmx600 mm

The Big Silverback: 270L	
Code	Description
	PS1 Certified Tanks with AS/NZS 1546.1.2008 approval Size 710mm diameter, 850mm high Pre plumbed with 40mm pipework Single non-return valve
BSB1	With VH100 750w Vortex Pump
BSB7	With TPG-100 1HP Chopper Pump
GPS Alarm	High-Level/ Low-Level Alarm



Ecoline 115L Grey/Waste Water Pump Station

With Automatic Submersible Pump

EL115Grey

Designed for tiny homes and grey water disposal.

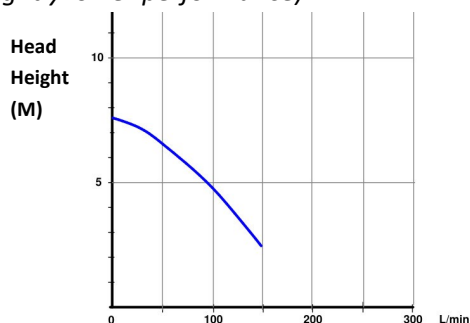


TPV-30 Pump

Up to 20mm Soft Solids

250W Vortex Pump

Performance (with 32mm outlet. 25mm has slightly lower performance)



Complete With....

25mm Pipework

Mac Union for quick pump removal

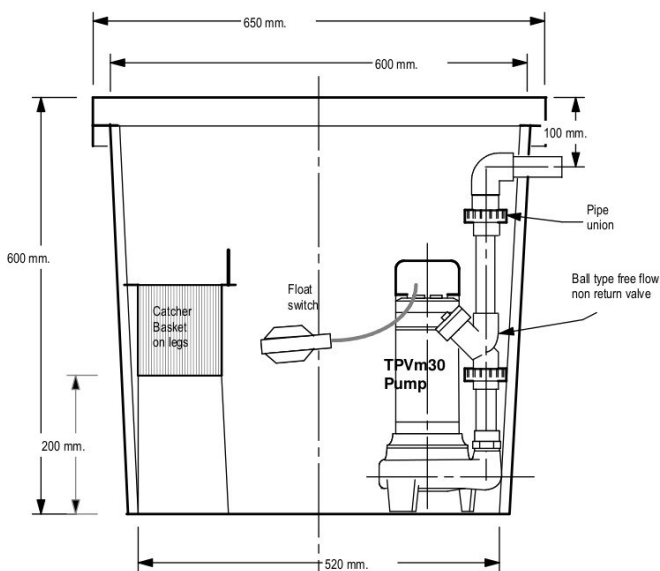
Non—Return Valve

Removable basket to catch debris, hair and large lint.

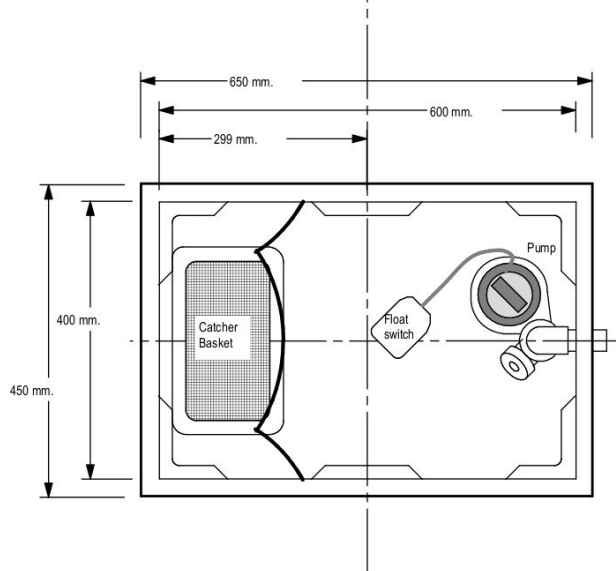
Drill inlet to suit your specifications

Please refer to www.level.org.nz's greywater recycling guidelines for the safe use of this system

<https://www.level.org.nz/water/wastewater/on-site-wastewater-treatment/greywater-recycling/>



section



Plan view with Lid removed

320 Litre Sewerage Pump Stations

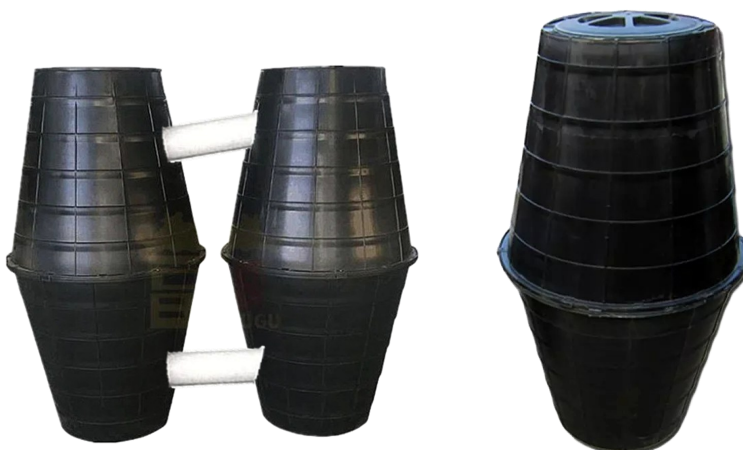


320SP	Tank & pump. Conical tank, 840 max dia. X 980h Fixed lid (not pedestrian-rated)	Non-return valve fitted 1x 110mm rubber seal inlet 50mm electrical outlet with ducting including cable seal. PVC outlet pipe -40mm Mac Union for easy disconnection Ball valve with 40mm mac union 50mm electrical connection with seal kit to connect to 50mm electrical ducting supplied. 50mm vent pipe connection outlet supplied
320SP-3 Vortex Pump	750w Vortex Pump	With VH100 750w vortex pump.
320 SP-7 Chopper Pump	1 HP Chopper Pump. Cuts to 10mm diameter	With 750w TPG100 chopper pump
Optional Extras		
GPS Alarm	High Level / Low Level Alarm System	Complete with float and power lead. Kit set. 230v. Sounds alarm at plumber's pre-set level. Must be installed by a registered electrician.
320MH	Man Hole Riser 230H	Man hole riser 230mm high. With lid. Lid not pedestrian-rated.

- Pre plumbed with 40mm Mac Union and ball valve
- 50mm vent pipe connection included
- 50mm electrical outlet sealed to ducting
- Pedestrian rated lid
- Light weight– one person lift
- For Human Waste and Toilet Tissue
Only– No Sanitary Products

500 Litre Sewerage Pump Stations

500SP	<p>Tank</p> <p>Conical tank, 840 max dia. X 1585H Fixed lid. Lid not pedestrian-rated</p> <p>310mm lid diameter 500mm diameter for top of tank</p>	<p>Non-return valve fitted</p> <p>1x 110mm rubber seal inlet 50mm electrical outlet with ducting including cable seal.</p> <p>PVC outlet pipe -40mm</p> <p>Mac Union for easy disconnection Ball valve with 40mm mac union</p> <p>50mm electrical connection with seal kit to connect to 50mm electrical ducting supplied. 50mm vent pipe connection outlet supplied</p>
Vortex	750w Vortex Pump	With VH100 pump.
Chopper	1 HP Chopper Pump. Cuts to 10mm diameter	With TPG100 750w chopper pump.
Optional Extras		
GPS Alarm	High Level/ Low Level Alarm System	Complete with float and power lead. Kit set. 230v. Sounds alarm at plumber's pre-set level. Must be installed by a registered electrician.



Two 500L tanks plumbed together.

- Pre plumbed with 40mm Mac Union and ball valve
- 50mm vent pipe connection included
- 50mm electrical outlet sealed to ducting
- Pedestrian Rated Lid
- Light weight– one person lift when empty
- **For Human Waste and Toilet Tissue Only– No Sanitary Products**

PS1 Designed In - Ground Tanks

Our series of virgin plastic PS1 certified, in - ground tanks are perfect for heavy duty use and come in a range of sizes.

For Human Waste and Toilet Tissue Only— No Sanitary Products

These tanks have AS/NZS 1546.1.2008 approval

2100 Litre Size <i>1330 diameter x 1700 high</i>	Complete with 40mm pipework, mac union, non-return valves, inlet and outlet seals. Non-drilled entry and exit
SP2100-3 Vortex	With vortex 750w pump (VH100)
SP2100-7 Chopper	With 750w chopper pump (TPG100)
1100 Litre Size <i>1330 diameter x 1190 high</i>	Complete with 40mm pipework, mac union, non-return valves, inlet and outlet seals. Non-drilled entry and exit. Maximum capacity 1410L
SP1100-3 Vortex	With vortex 750w pump (VH100)
SP1100-7 Chopper	With 750w chopper pump (TPG100)
550 Litre Size <i>890 Diameter x 1080 High</i>	Complete with 40mm pipework, mac union, non-return valves, inlet and outlet seals. Non-drilled entry and exit Maximum capacity 605L
SP550-3 Vortex	With vortex 750w pump (VH100)
SP550-7 Chopper	With chopper 750w pump (TPG100)
270 Litre Size <i>710 Diameter x 850 High</i>	Complete with 40mm pipework, mac union, non-return valves, inlet and outlet seals. Non-drilled entry and exit. Maximum capacity 270L
SP270-3 Vortex	With vortex 750w pump (VH100)
SP270-7 Chopper	With chopper 750w pump (TPG100)
Optional Extras	
GPS Alarm	High Level / Low Level Alarm. Highly recommended



SP2100



SP1100



SP550



SP270



SP270 (Top View)

‘King Koba’ Pump Stations

With AS/NZ 4766, 3500 and 1546.1 Approved Chamber



- 2070mmx1020mm . 1300L capacity, 75kg
- Ribbed Tank for strength and anchoring in-ground
- Rounded Base collects sediment for effective removal
- Smooth Internal Finish for easy cleaning
- Tough construction
- Plastic lid (steel lid available upon request)
- Total pipework package included
- Hydraulic uplift anchoring drawings available
- Undrilled for plumber convenience

Free New Zealand Wide Delivery For ‘The King Koba’ Range!

Code	Description
KK3	With 750W VH100 Vortex Pump
KK7	With 750W TPG-100 Chopper Pump
KK12	With FGP 0.8HP ‘Fighter’ DC Grinder Pump
GPS–Alarm	High/Low Level Alarm. <i>Highly Recommended</i>



High-Pressure King Koba

Code: KK1300-10

A powerful high-pressure pump matched with a tough certified tank makes the ideal solution for high-pressure sewer mains. Available with a float switch or a sensor.

1300L 'King Koba' Certified Tank



- AS/NZ 4766, 3500 and 1546.1 Approved
- 2070mmx1020mm . 75kg
- Ribbed Tank for strength and anchoring in-ground
- Rounded Base collects sediment for effective removal
- Smooth Internal Finish for easy cleaning
- Tough construction
- Plastic lid (steel lid available upon request)
- Hydraulic uplift anchoring drawings available
- Undrilled for plumber convenience

Inlet, outlet and pump chain supplied. Plumber to supply ball-type non-return valve and pipework to suit application.



1.5HP 'Growler' High-Pressure Pump

Code: 240-GRP150M

Switch Genie Pump Controller

Code: 228-SG-30 SF

Single pump controller panel. Provides power surge and run-dry protection.



High-Level Alarm

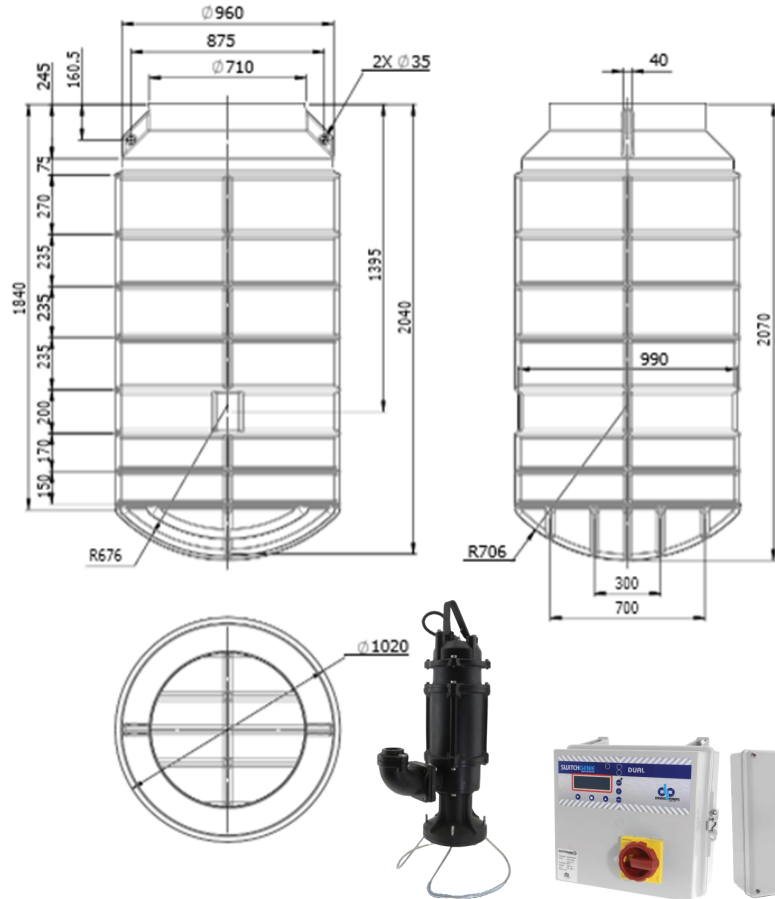
Code: 228LSKIT

Light and buzzer sounds when pre-set height reached.



Two-year warranty on pump, alarm and controller. Ten-year tank warranty
www.gorillapumpstations.co.nz

High-Pressure King Koba



KK1300-10 H/P FLOAT

With Automatic Float-Switch (Code: 228-TRDF-710)

KK1300-10 H/P SENSOR

With Hydrostatic Sensor (Code: 228-PRW-05)

KK1300-10 TIMER CONTROLLER

Extra: Battery Pack Timer System (228-SG20-2)



Two-year warranty on pump, alarm and controller

Ten-year tank warranty

. Visit website for full warranty information.

www.gorillapumpstations.co.nz

Tank Risers

To Fit:

SP1 270-550-1100

320-SP Range



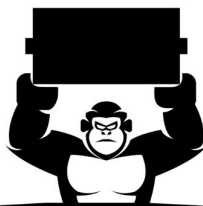
High Range

RL1	470mmx640mm C/W Lid. Four Outlets
RL2	470mmx590mm C/W Lid. Four Outlets
RL3	470mmx 535mm C/W Lid. Four Outlets
RL4	470mmx435mm C/W Lid. Three Outlets



Low Range

RS1	470mmx230mm C/W Lid.
RS2	470mmx180mm C/W Lid.
RS3	470mmx130mm



GORILLA PUMP STATIONS

Further and Faster

GPS High-Low Level Alarms

Complete with a control box and float switch, the GPS-ALARM alarm emits an audible warning with flashing light at a pre-set water level. A mute button will silence an activated alarm, resetting when the alarm 'clears'.

This proudly New Zealand– made alarm suits all brands of pump station, and can be converted from a 'high-level' to a 'low-level' alarm simply by changing the configuration of the float switch wiring.

Specifications

Float Switch Finder 72.A1.1.000.1001 :

suitable for grey water

: polypropylene body, 10 metre H05 RN F neoprene cable

: CO SPDT contacts, 250VAC 10A resistive 8A inductive

: IP68, max. temperature +45°C

: max. pressure 10 BAR

Control Box : ABS

: Dimensions 125x125x100mm

: Cable entry glands for supply and float switch

: Buzzer IP40 80dB

Control box must be situated indoors or in an IP68-rated housing

**Flashing Warning
Light**

Alarm Mute

Alert Buzzer

Compact Size

125x125x100mm

**10m Cable
Length**

IP68

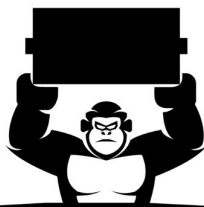


Storm Water Pump Stations

	Code	Flow Rate	
  	Vortex 65 DP-2	20 L/m @ 4.6m 50L/m @ 4m 75 L/m @ 3m 100 L/m @ 2m 125 L/m @ 0m	450mm x 450mm x 600mm high Stormwater pump station. Comes with 40mm non - return valve and mac union. Up to 100 litres per minute TPO1118P impeller pump for clean and dirty storm water. 25mm soft solids
		20 L/m @ 4.6m 50L/m @ 4m 75 L/m @ 3m 100 L/m @ 2m 125 L/m @ 0m	650mm x 450mm x 800mm high Stormwater pump station. Comes with 40mm non return valve and mac union. Up to 100 litres per minute. TPO1118P pump for clean and dirty storm water. 25mm soft solids
		50 L/m @ 9.4m 100 L/m @ 8.4m 150 L/m @ 7.2m 200 L/m @ 6m 250 L/m @ 4.5m	650mm x 450mm x 800mm high HIGH VOLUME Stormwater pump station. Comes with 40mm non return valve and mac union. 750w Vortex Pump 35mm soft solids

Both of the above come with the following...

- Vortex System.
- 40mm outlet
- Pre-Plumbed with transparent non-return valve
- 50mm electrical outlet for 50mm ducting
- 40mm mac union fitted
- Pedestrian - rated slotted FRP lid



GORILLA PUMP STATIONS
Further and Faster

280L/340L Twin Stormwater Pump Stations

TW280 SW	Tank & pump. 900x650x800 Solid Removeable Lids	Non-return valve fitted 1x 110mm rubber seal inlet 50mm electrical outlet with ducting including cable seal. PVC outlet pipe -40mm Mac Union for easy disconnection Ball valve with 40mm mac union 50mm electrical connection with seal kit to connect to 50mm electrical ducting supplied. Slotted lid
TW340SW	900x650x1000	
Vortex TW280-3 SW	750w high volume heavy duty cast iron vortex pump	With VH100 pump. Stormwater Vortex Up to 32mm Soft Solids
Optional Extras		
TW340-3 SW		
GPS Alarm	High Level/ Low Level Alarm System	Alarm box complete with float and power lead. Kit set. 12/24/230v. Sounds alarm at plumber's pre-set level. Must be installed by a registered electrician.

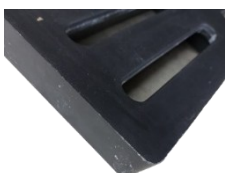


- Pre plumbed with 40mm Mac Union and ball valve
- 50mm vent pipe connection included
- Pedestrian rated lid
- 50mm electrical outlet sealed to ducting

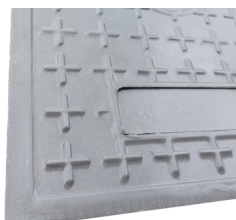
Storm Water Sumps

65PB	Pedestrian rated pit box lid	Overall Size: 450mm Wide, 450mm Long, 600mm High. 300x300 Base Comes with slotted FRP lid.
65PB1T	One tonne rated lid.	Overall Size: 450mm Wide, 450mm Long, 600mm High. 300x300 Base Comes with slotted FRP lid.
65PBSolid	Solid Pedestrian rated pit box lid	Overall Size: 450mm Wide, 450mm Long, 600mm High. 300x300 Base
115PBSolid	115L Pit Box. Solid Pedestrian-rated pit box lid	Overall Size: 650mm long x 450mm wide x 600mm high Comes with solid FRP lid.
115PB	115L Pit Box. Slotted Pedestrian-rated pit box lid	Overall Size: 650mm long x 450mm wide x 600mm high Comes with slotted FRP Lid
140PB	Pedestrian rated pit box lid.	Overall Size: 650mm Wide, 450mm Long, 800mm High. 500x300 Base Comes with slotted FRP lid.
140PBSolid	Pedestrian rated solid lid	Overall Size: 650mm Wide, 450mm Long, 800mm High. 500x300 Base Comes with solid FRP lid.
170PB	Pedestrian rated grate	Comes with slotted FRP lid. 650x450x1000
170PBSolid	Pedestrian rated solid lid	Comes with solid lid 650x450x1000

All Storm Water Sumps Are Sold Subject To Availability.



Standard Pedestrian Slotted Lid



Solid Pedestrian Lid



One Tonne Slotted Lid



Grease Traps

Approved by the Rotorua District Council (Document Number: OW-44209)

600mm Inspection Risers Available On Request– Contact Us For Details

500L Grease Trap



500GT	100% UV Stabilised Polyethylene Trap
--------------	--------------------------------------

1200L Grease Trap



1200GT	100% UV Stabilised Polyethylene Trap
---------------	--------------------------------------



Internal View

Lid Options



Fixed Lid



Vent Lid



Spring Lid

www.gorillapumpstations.co.nz 021 745 335

info@gorillapumpstations.org.nz

500L Grease Trap



FEATURES

Council Approved (Doc No: OW-44209) 100% UV Stabilised Polyethylene

Light Weight -Therefore easily handled, transported and installed. Easy to link 2 or more together for bigger capacity.

Easy access for cleaning through 455mm (x2) screw lids. Inlet, Outlet Diameter :100mm and 330mm Centre high. 100mm Eductor and Inductor air vents.

1200L Grease Trap



FEATURES

Council Approved (Doc No: OW-44209)

100% UV Stabilised Polyethylene

Light Weight -Therefore easily handled, transported and installed.Easy to link 2 or more together for bigger capacity.

Easy access for cleaning through 455mm (x3) screw lids.Inlet, Outlet Diameter :100mm.

100mm Eductor and Inductor air vents.

Submersible Pump Range



TPO1376 (N)

Clean Stormwater Only
Up to 5mm Particles
400W
40mm down to 25mm outlet adaptor
Below specs are at 40mm outlet
20 L/m @ 6.6m
50 L/m @ 6m
75 L/m @ 5m



TPO1118P

2

Heavy-duty plastic body
Designed for immersion in stormwater
Internal float switch for easy installation and operation.
550W
Below specs are at 40mm outlet
50L/m @ 6.5m
100L/m @ 4m
150L/m @ 2m



VH100

3

Stormwater/ Greywater/ Sewerage Vortex
For 'Poo, Paper and Pee'
1 HP Motor
32mm Soft Solids
Below specs are at 50mm outlet
50 L/m @ 9.4m
100 L/m @ 8.4m
150 L/m @ 7.2m
200 L/m @ 6m
250 L/m @ 4.5m



VH150

1.5HP, 1.1kw vortex 'sucker-type' pump for higher-volume applications
Up to 35mm soft solids
50L/m @ 10.5m head
100L/m @ 9.5m head
200L/m @ 8m head
300L/m @ 4m head







C-50Z21.5SF

Chops to 15mm diameter

6

2 HP, 1.5KW Chopper Pump
20kg
Specifications at 50mm outlet
50L/m @ 15.2m
100L/m @ 13.8m
200L/m @ 11.2m
300L/m



TPG100 Chopper 7	Sewerage Grinder Pump 1HP 750w Cuts to 10mm	<i>Below specs are at 50mm outlet</i> 50L/m @ 10.5m 100L/m @ 8.3m 150L/m @ 6.15m 200L/m @ 4m
 TPH High Pressure Greywater Discharge Pump For lateral and drip-feed lines <u>only</u> 8	For Septic Greywater Systems 25mm outlet (connector supplied) 750w Motor Maximum Particle Size:3mm	<i>Specifications at 25mm outlet</i> 25L/m @ 28m 50L/m @ 26m 75L/m @ 22m 100L/m @ 15m Shutoff @ 30m
 TPV30 Vortex 9	'Sucker-type' Pump for Clean/Dirty Stormwater and Greywater. 32mm outlet 250w motor Up to 20mm soft solids	<i>Specifications at 32mm outlet</i> 150L/m @ 2.5m 100L/m @ 4.5m 50L/M @ 6.5m
 'FGP' 'Fighter' Grinder Pump AS/NZS 60335.1:2020 AS/NZS 60335.2.41:2013+A1 12	For Heavy-Duty Wastewater Systems 32mm outlet size 600w brushless DC motor.	<i>Specifications at 32mm outlet</i> 120L/m @ 5m 70L/m @ 12m 40L/m @ 13m Shutoff @13.5m
 PC160 'Sipper' Pump	For Shallow Clean Water Applications (e.g. surface water in basements) Electric sensor-switch activates at 40mm, reduces level to around 5mm 230v, 100w motor Handles up to 3mm solids	<i>Specifications at 25mm Outlet</i> 60L/m @ 1.25m 40L/m @ 3.5m 20L/m @ 5m 10L/m at 5.5m

Whole-of-House Pump Range



AJS J 80

Self-Priming Jet Pump for Small/Medium Houses and Irrigation

230-240 volt, 600w motor

Approx 45L/m @ 9m head

Maximum pressure 38m– maximum suction/7m jet/venturi suction lift.



HYDROPAK051

Pump for Single-Bathroom Dwellings. Also Suits Garden Irrigation, Wash-Down Applications and Water Transferring and Circulation.

200-240V 50Hz 400w 'turbine type' single-phase motor

Maximum suction lift 6m, start pressure 26,

Approx 30L/m @ 6m head



JEXI JR5E

350kpa Stainless Steel House Pump. Also Suits Extracting From Wells and Pressure Boosting

Up to 7m suction lift

Turn-on pressure 1.5 bar

Approx 55L/m @ 5m head



JEXI JR10E

436kpa Stainless Steel House Pump. Also Suits Extracting From Wells and Pressure Boosting

Up to 7m suction lift

Turn-on pressure 1.5 bar

Approx 60L/m at 15m head.

Please visit www.gorillapumpstations.co.nz for full specifications



GORILLA PUMP STATIONS

Further and Faster

Transparent Non-Return Valves



25mm Non-Return Ball Valve Code: UB25

- Mac Union Fitting
- Cleaning eye for convenient maintenance
- Glued Connections
- Vertical Installation Only



40mm Non-Return Ball Valve Code: UB40

- Mac Union Fitting
- Cleaning eye for convenient maintenance
- Glued Connections
- Vertical Installation Only



50mm Non-Return Ball Valve Code: UB50

- Mac Union Fitting
- Cleaning eye for convenient maintenance
- Glued Connections
- Vertical Installation Only



40mm Horizontal Non-Return Valve Code: UF40

- Transparent body
- Full Flow
- 40mm pressure pipe both sides
- Can be disassembled if required

These non-return valves are only transparent when installed internally