

King Koba

1300 Litre Sewerage Pump Station



Tank Supplied By Promax

- AS/NZ 4766 Approved
- 2070mmx1020mm . 1300L capacity, 75kg
- Ribbed Tank for strength and anchoring in-ground
- Rounded Base collects sediment for effective removal
- Smooth Internal Finish for easy cleaning
- Tough construction
- Plastic lid (steel lid available upon request)
- Total pipework package included
- Hydraulic uplift anchoring drawings available
- Undrilled for plumber convenience
- Other pump options available upon request



VH100 Base



TPG100 Base

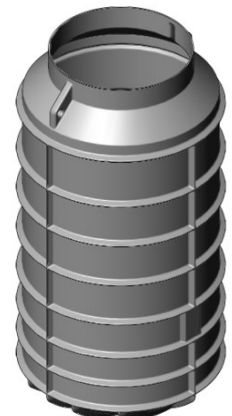
Available With Two Pump Options

KK3– With 750W VH100 Vortex Pump

KK7– With 750W TPG-100 Chopper Pump



Fittings Kit



King Koba

1300 Litre Sewerage Pump Station

Featuring a certified tank, a powerful vortex pump and quality fittings.



KK3– ‘King Koba’ Vortex Pump Station

AS/NZ 4766 Approved 1300L Tank

Rounded base for sediment collection.

Strong ribbed exterior for easy anchoring.

Smooth Interior for easy cleaning.

- **VH/100 Vortex Pump**

750w, 1HP Motor

Up to 32mm soft solids

250L/m @ 4.5m Head

- **Full Fittings Kit**



Free Shipping New Zealand Wide!



Eco Water Solutions

PO Box 18 Foxton Beach
021 745 335

www.gorillapumpstations.co.nz



GORILLA PUMP STATIONS

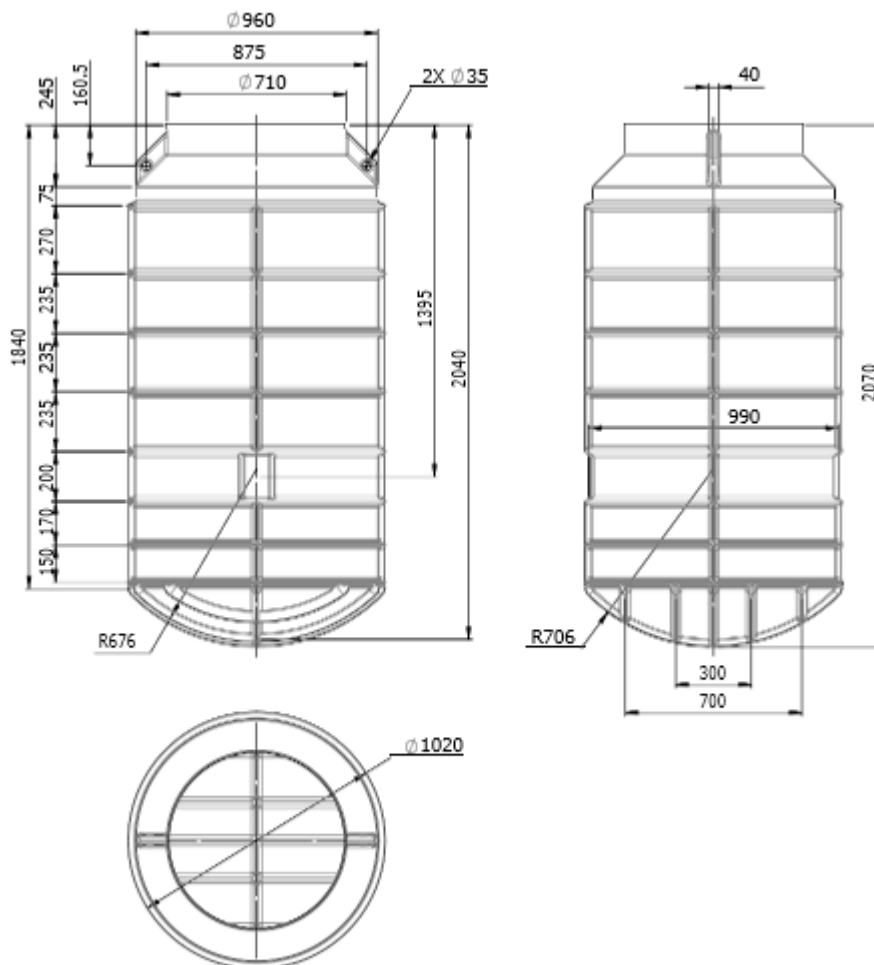
Further and Faster

'The King Koba' 1300 Litre Sewage Pump Station

Installation Instructions

Thank you for purchasing an Eco Water Solutions 'King Koba' sewage tank and pump unit. These units are designed for whole-of-house systems, baches, tiny homes and basement level bathrooms built below the sewer line.

Connections are supplied unglued so that they can be positioned anywhere on the top half of the tank to suit site conditions. Extra pipe is included for different setouts.



1300L 'King Koba' Chamber

Unpacking

The tank is made of 'virgin plastic' polypropylene. It is supplied with one carton containing valve pipework with hose for easy customer setup.

The pump is supplied loose packed in a separate carton.

Check that the pump is the required unit and inspect for any damage to tank and fittings.

Visit www.gorillapumpstations.co.nz for a range of pump configurations

Outlet connection

Using a holesaw, cut hole for outlet tank connector to suit your requirements.

Inlet Connection

Using a 120mm holesaw, cut hole for inlet at a height that suits your plumbing requirements.

Assembly

When fitting the 110mm o.d. sewer pipe into the sealing ring, it is best to apply soapy water to the ring, to ease insertion of the pipe.

Screw the discharge pipe and non-return valve assembly into the pump outlet.

Lower the pump into the tank using the chain, and then Hang the chain on the tek screw provided to side of tank

Do not use the power cable to lift the pump.

After placing the pump and pipe in the tank, connect the Pipe union to the outlet pipe.

Connect the isolating ball valve to the outlet pipe outside the tank.

When connecting the pipe union and the valve, check that the sealing O-ring is in place, and is not loose in the bottom of the tank.

Ensure that the pump is centred in the tank, and that the float switch is free to move up and down without obstruction.

Read the pump instruction manual supplied with the pump.

Please refer to the tank manufacturer's installation instructions attached for full installation details

For high water tables or soft soil substrates strapping should be attached from dead weight over the top of the tank from the two tie-down points as per manufacturer's instructions. For this information, visit www.promax.co.nz

Venting Installation.

Vent in accordance with Local Council Regulations

Cable Installation

An RCD (residual current device) must be used with this product!

All pumps and alarms must be installed by a certified electrician in accordance with New Zealand standards.

50mm conduit ducting pipe must be used as conduit for electrical cable to ensure ease of installation and maintenance.

*>> Never lift the pump by the cable, as that will damage the pump.
Always lift using the handle and/or chain on top of the pump.*

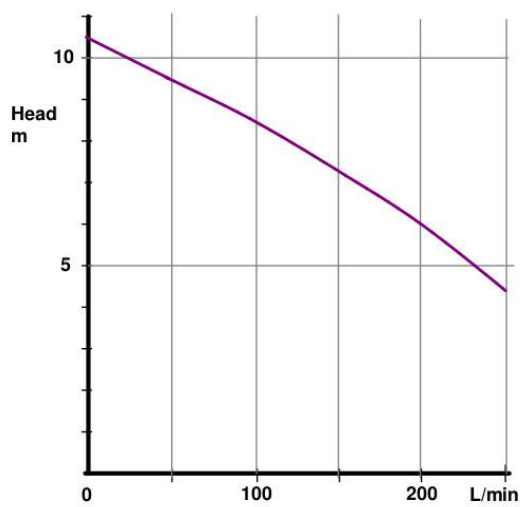
Maintenance

- Tank requires regular checks to ensure no fat or oils have formed at the top of the chamber. **If not regularly checked the float may malfunction which will invalidate warranty.**
- Tank requires checking for solids build-up. Installation is required by a registered plumber.
- Check regularly for build-up of solids or any other matter in pump chambers.
- Periodically wash down the inner walls of the chamber with a high pressure hose to activate pump and thus flush out the chamber.
- Check that the vent pipe is also clean and free of any obstruction.
- A 24-litre grease trap is recommended between kitchen waste pipe and gulley trap.

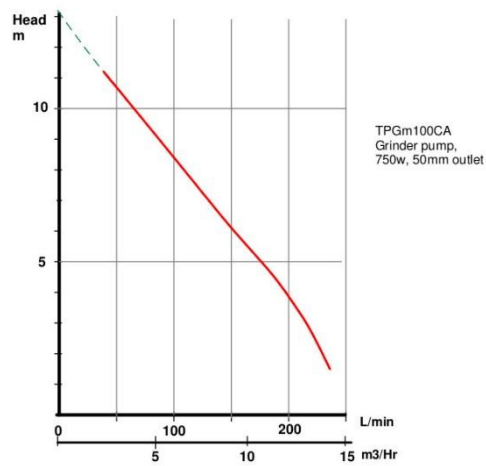
Please check on our website (www.gorillapumpstations.co.nz) for warranty conditions.

Read the pump instruction manual supplied with the pump.

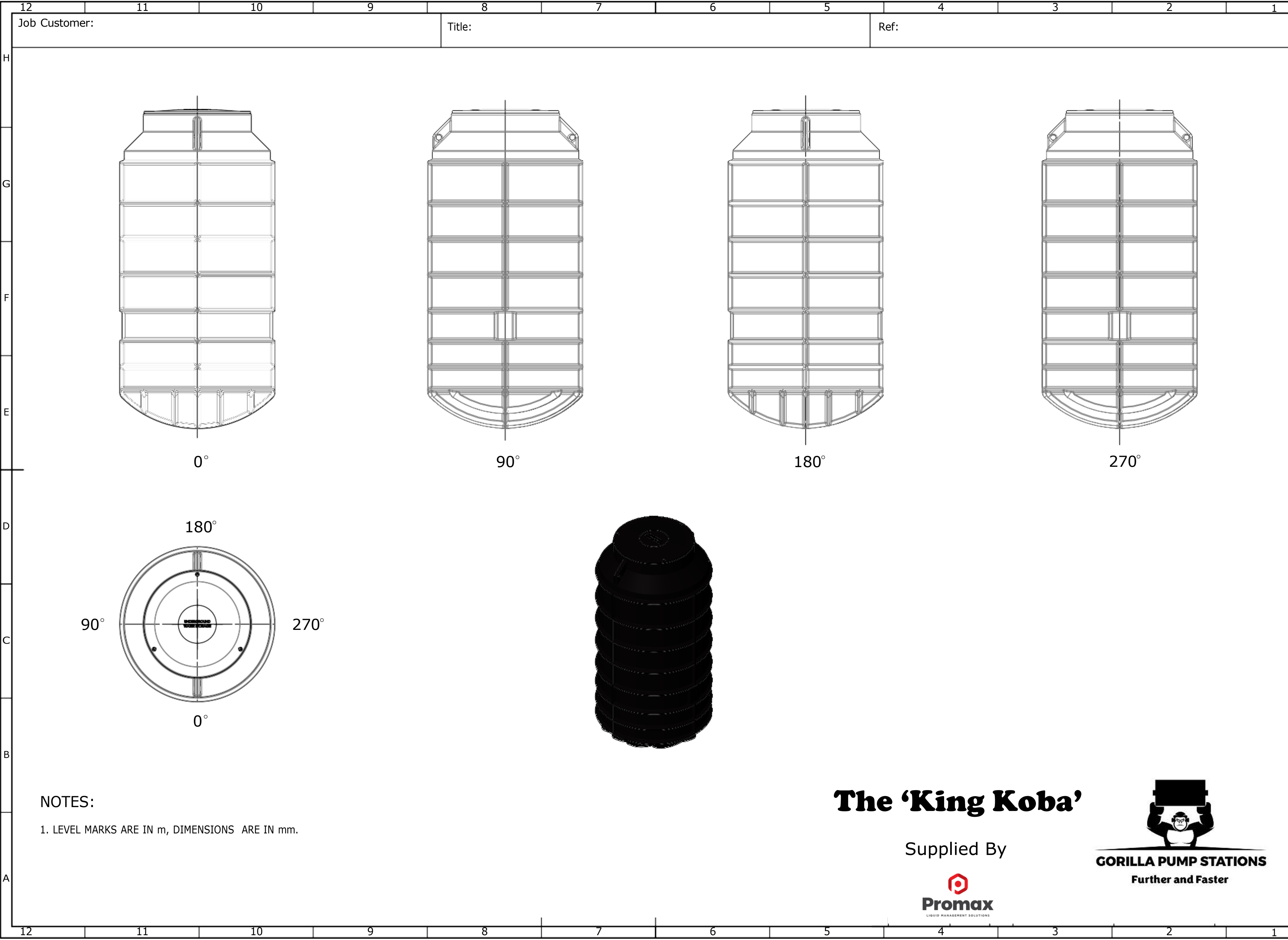
Pump Specs



VH100



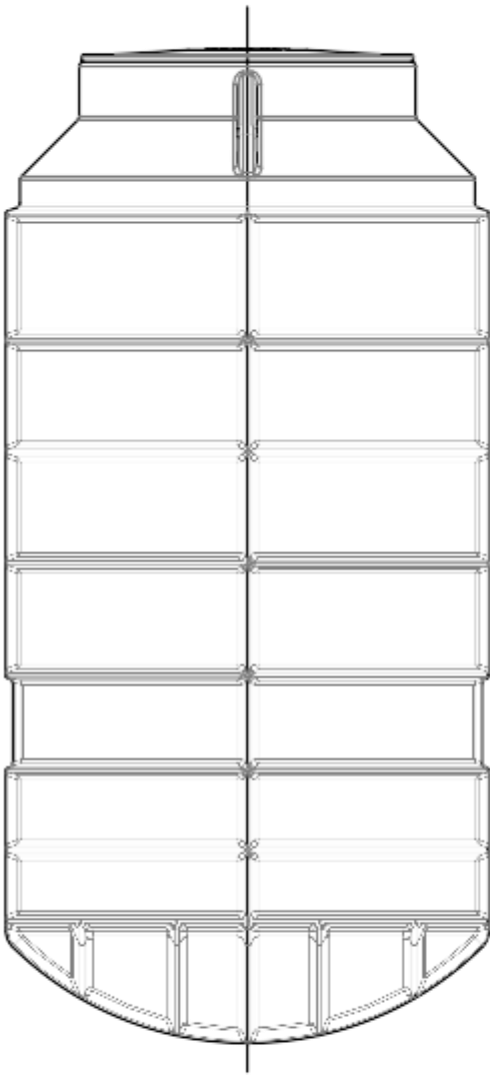
TPG100



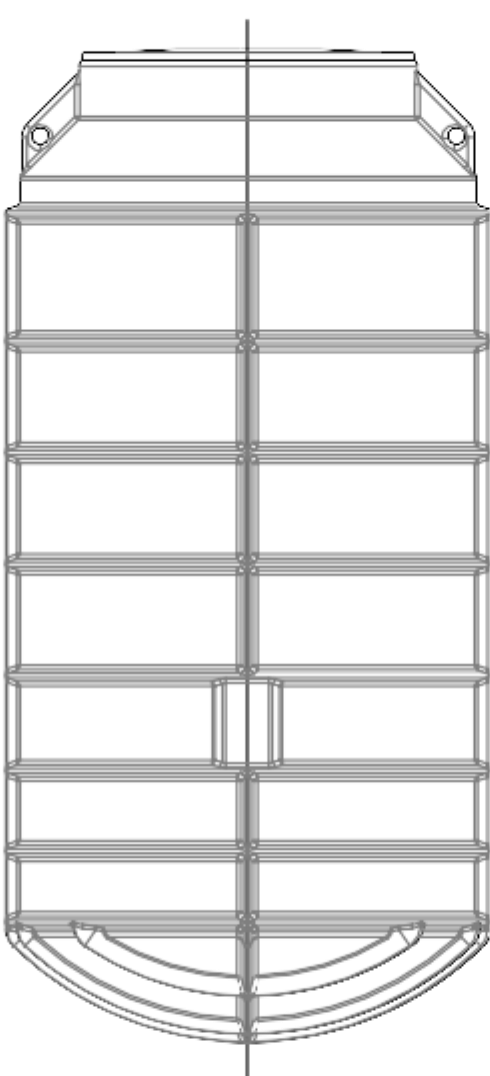
Job Customer:

Title:

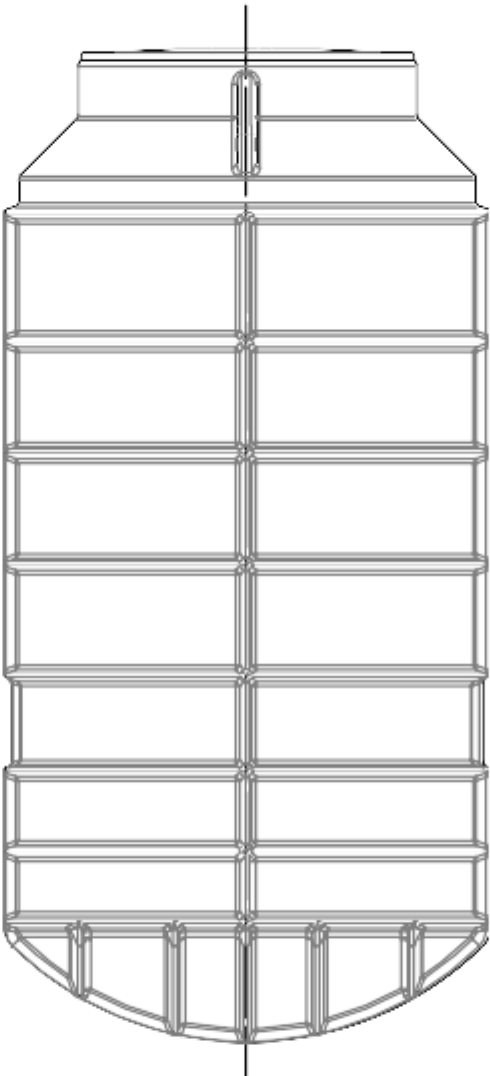
Ref:



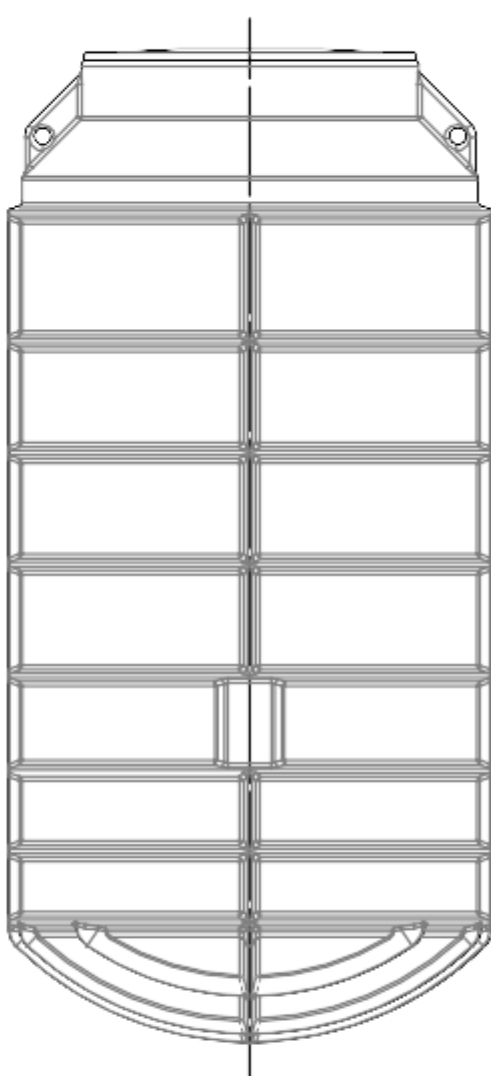
0°



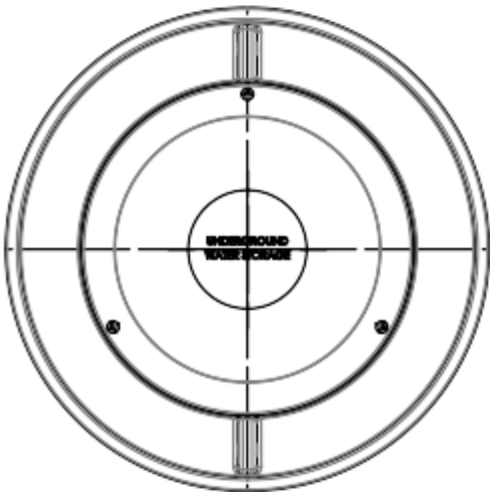
90°



180°



270°



180°

90°

270°

0°

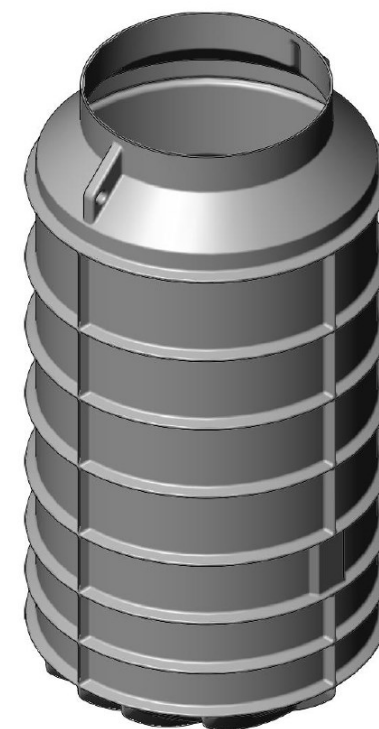
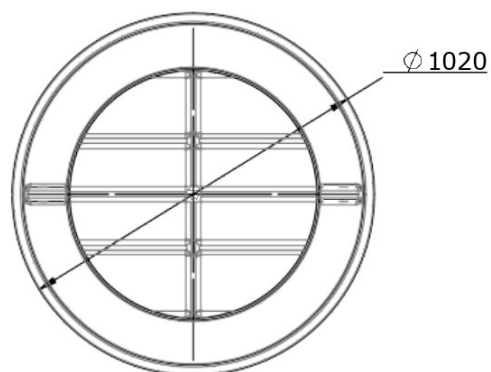
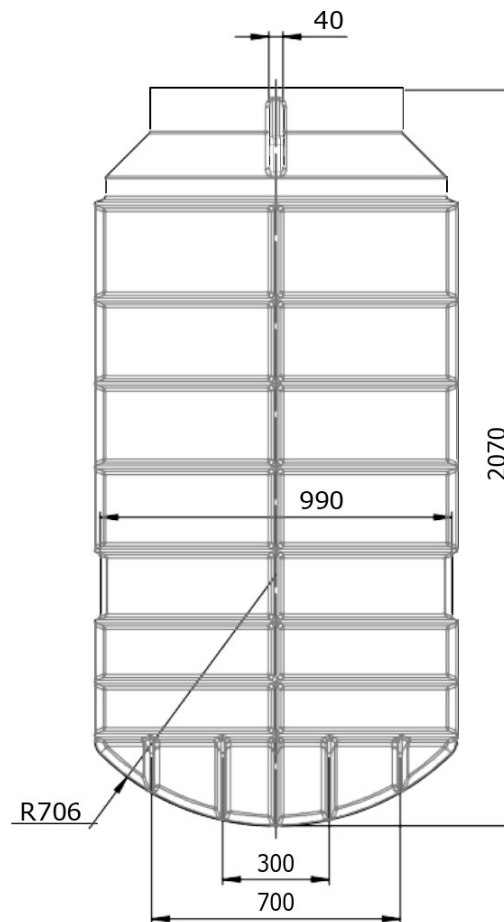
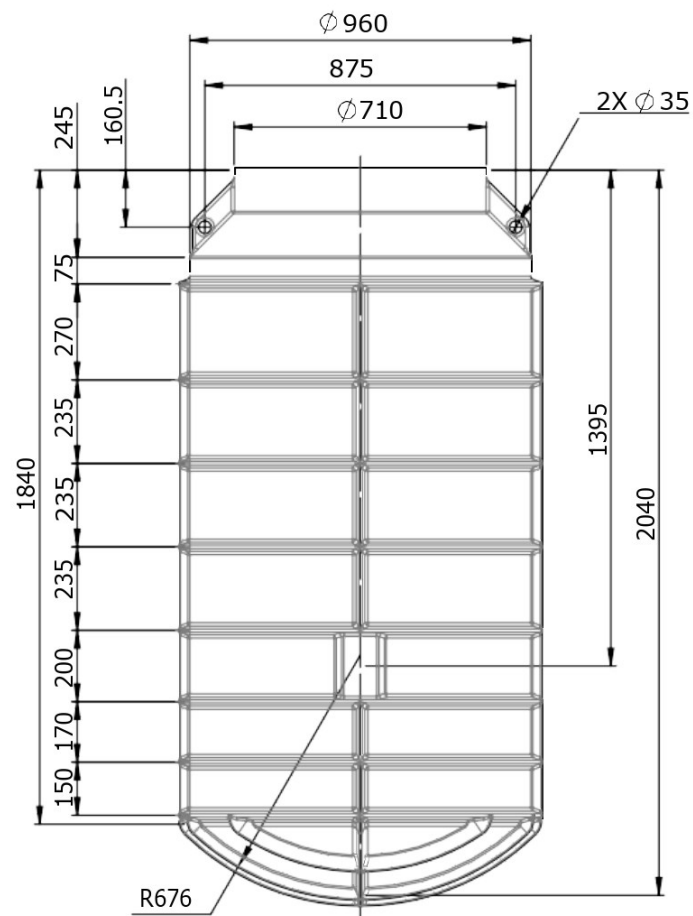
NOTES:

1. LEVEL MARKS ARE IN m, DIMENSIONS ARE IN mm.

The ‘King Koba’

Supplied By

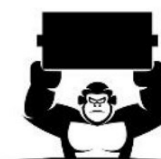




The 'King Koba'

1300 Litre Pump Chamber

Supplied By



GORILLA PUMP STATIONS

Further and Faster