

1200L Grease Trap



FEATURES

Council Approved (Doc No: OW-44209)

100% UV Stabilised Polyethylene

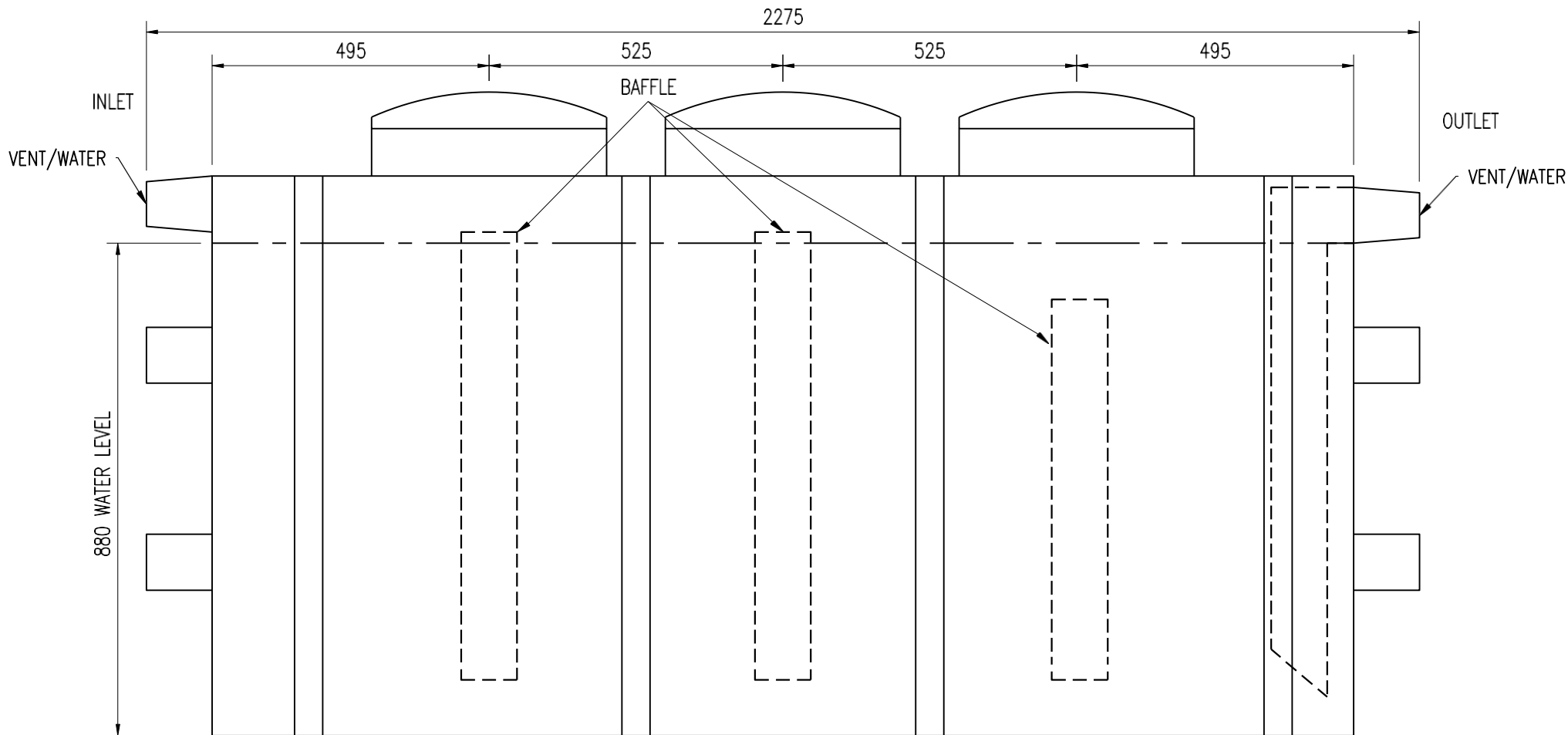
Light Weight -Therefore easily handled, transported and installed.

Easy to link 2 or more together for bigger capacity.

Easy access for cleaning through 455mm (x3) screw lids.

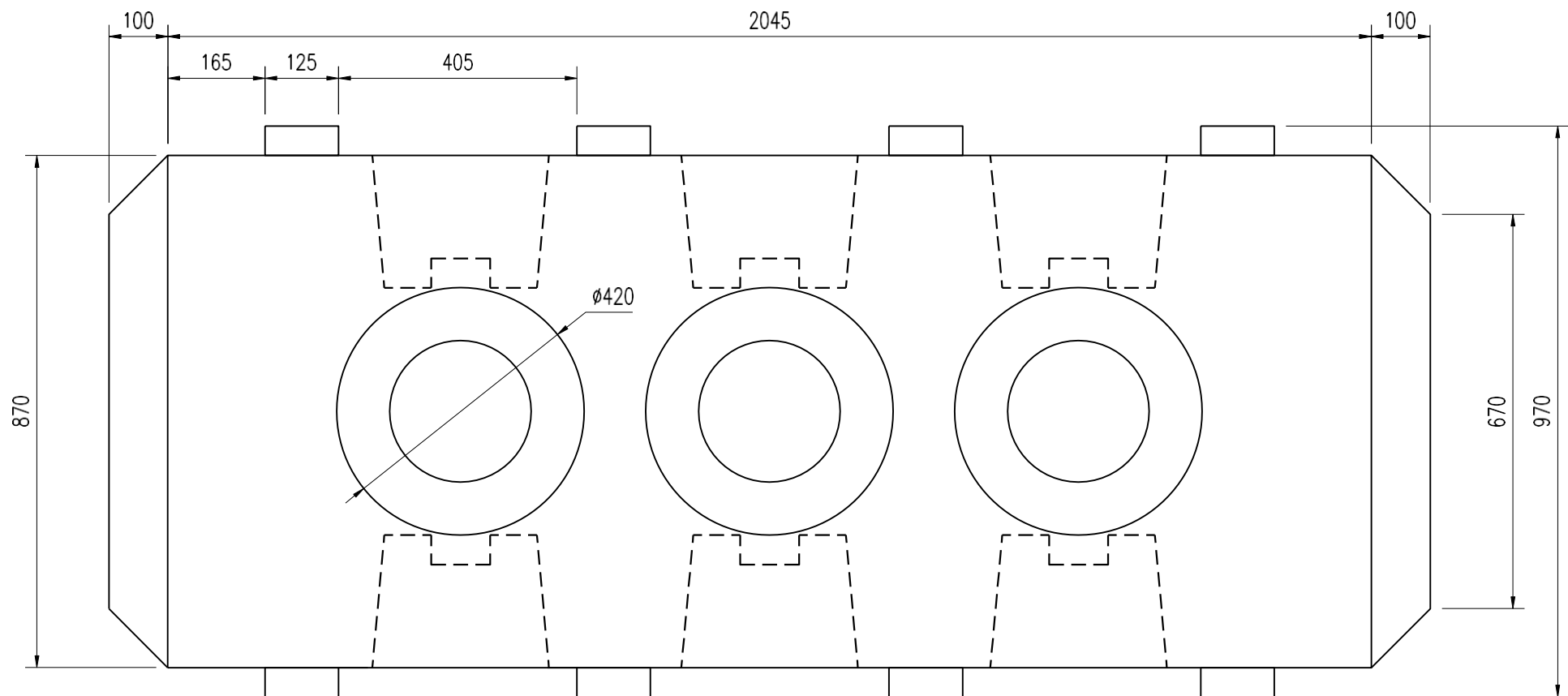
Inlet, Outlet Diameter :100mm.

100mm Eductor and Inductor air vents.

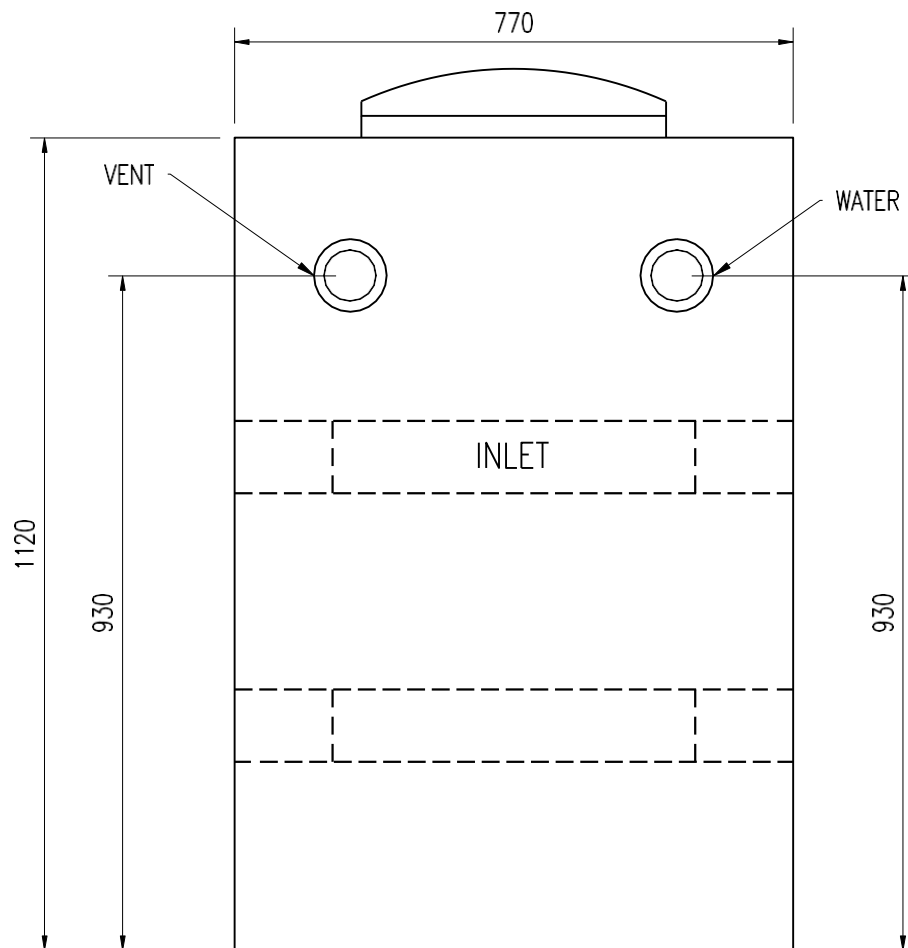


FRONT ELEVATION

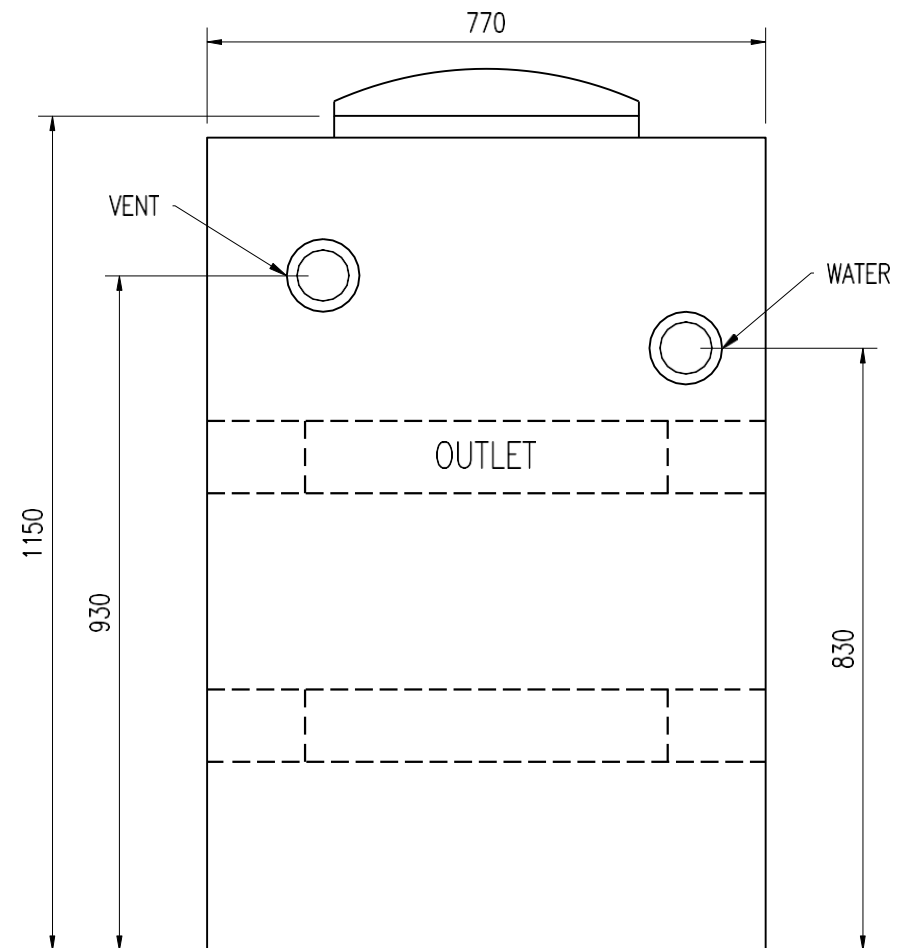
					CLIENT DISPLAY			PROJECT GREASE TRAP 1200 L			
						DRAWN	DRAWN	DATEDWN			
						CHECKED			TITLE FRONT ELEVATION		
						APPROVED			PROJECT NO.		
						SCALE	SCALE	SHEET SIZE	A4		REV
REV	DESCRIPTION	DATE	BY								



						CLIENT	PROJECT
						DISPLAY	GREASE TRAP 1200 L
						DRAWN	
						CHECKED	
						APPROVED	
						SCALE	
REV	DESCRIPTION	DATE	BY			SCALE	
						SHEET SIZE	A4
							TITLE
							PLAN
							PROJECT NO.
							SHEET No.
							REV



LEFT ELEVATION



RIGHT ELEVATION

					CLIENT DISPLAY			PROJECT GREASE TRAP 1200 L		
					DRAWN	DRAWN	DATEDWN			
					CHECKED			TITLE END ELEVATIONS		
					APPROVED			PROJECT NO.		
REV	DESCRIPTION	DATE	BY		SCALE	SCALE	SHEET SIZE A4	SHEET No:		REV