



GORILLA PUMP STATIONS

Further and Faster

King Koba

1300 Litre Sewerage Pump Station



- AS/NZ 4766, 3500 and 1546.1 Approved
- 2070mmx1020mm . 1300L capacity, 75kg
- Ribbed Tank for strength and anchoring in-ground
- Rounded Base collects sediment for effective removal
- Smooth Internal Finish for easy cleaning
- Tough construction
- Plastic lid (steel lid available upon request)
- Total pipework package included
- Hydraulic uplift anchoring drawings available
- Undrilled for plumber convenience
- Other pump options available upon request

Supplied Freight Free New Zealand Wide!



VH100 Base



TPG100 Base



FGP 'Fighter' Base

Available With Three Pump Options

KK3– With 750W VH100 Vortex Pump

KK7– With 1.1kW TPG-100 Chopper Pump

KK12– With heavy-duty FGP 'Fighter' DC
Grinder Pump



Fittings Kit



www.gorillapumpstations.co.nz



Eco Water Solutions

PO Box 18 Foxton Beach
021 745 335

www.gorillapumpstations.co.nz



GORILLA PUMP STATIONS

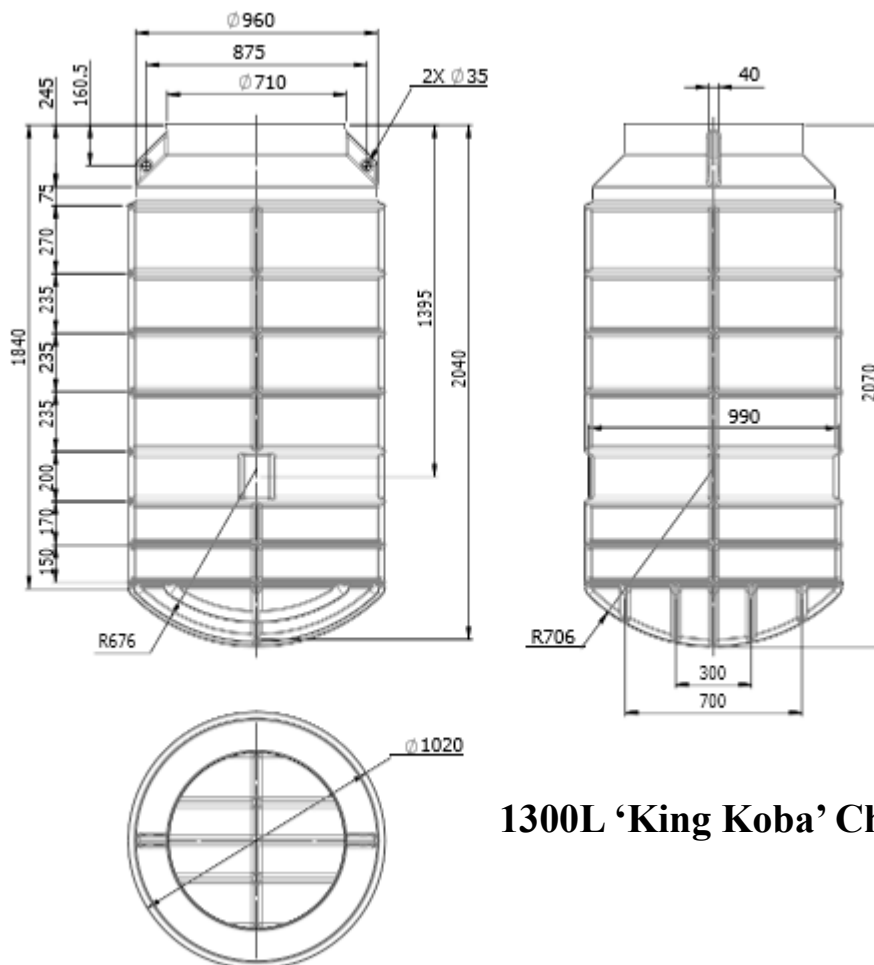
Further and Faster

'The King Koba' 1300 Litre Sewage Pump Station Certified to AS/NZ 4766, 3500 and 1546.1 Standards

Installation Instructions

Thank you for purchasing an Eco Water Solutions 'King Koba' sewage tank and pump unit. These units are designed for whole-of-house systems, baches, tiny homes and basement level bathrooms built below the sewer line.

Connections are supplied undrilled so that they can be positioned anywhere on the top half of the tank to suit site conditions. Extra pipe is included for different setouts.



1300L 'King Koba' Chamber

Minimum of 600mm of Concrete Anchor Required for Ballast. Concrete should be 1300mm diameter.

Unpacking

Before purchasing your pump station, please ensure it meets regulatory requirements for its application.

The tank is made of 'virgin plastic' polypropylene. It is supplied with one carton containing valve pipework with hose for easy customer setup.

The pump is supplied loose packed in a separate carton.

Check that the pump is the required unit and inspect for any damage to tank and fittings.

Visit www.gorillapumpstations.co.nz for a range of pump configurations

Outlet connection

Using a holesaw, cut hole for outlet tank connector to suit your requirements.

Inlet Connection

Using a 120mm holesaw, cut hole for inlet at a height that suits your plumbing requirements.

Assembly

When fitting the 110mm o.d. sewer pipe into the sealing ring, it is best to apply soapy water to the ring, to ease insertion of the pipe.

Screw the discharge pipe and non-return valve assembly into the pump outlet.

Lower the pump into the tank using the chain, and then hang the chain on the tek screw provided to side of tank.

Do not use the power cable to lift the pump.

After placing the pump and pipe in the tank, connect the Pipe union to the outlet pipe.

Connect the isolating ball valve to the outlet pipe outside the tank.

When connecting the pipe union and the valve, check that the sealing O-ring is in place, and is not loose in the bottom of the tank.

Ensure that the pump is centred in the tank, and that the float switch is free to move up and down without obstruction.

Read the pump instruction manual supplied with the pump.

Please refer to the tank manufacturer's installation instructions attached for full installation details

For high water tables or soft soil substrates strapping should be attached from dead weight over the top of the tank from the two tie-down points as per manufacturer's instructions. For this information, visit www.promax.co.nz

Venting Installation.

Vent in accordance with Local Council Regulations

Cable Installation

An RCD (residual current device) must be used with this product!

All pumps and alarms must be installed by a certified electrician in accordance with New Zealand standards.

50mm conduit ducting pipe must be used as conduit for electrical cable to ensure ease of installation and maintenance.

*>> Never lift the pump by the cable, as that will damage the pump.
Always lift using the handle and/or chain on top of the pump.*

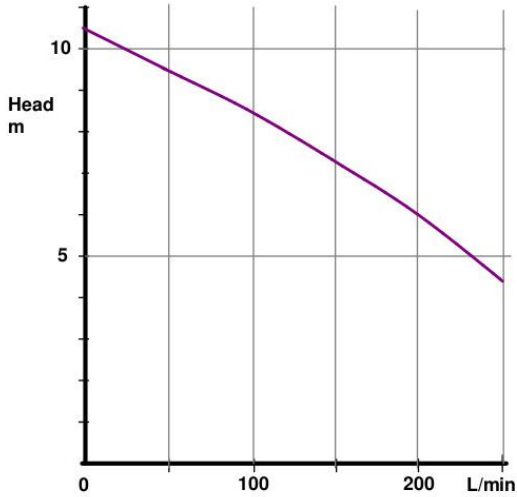
Maintenance

- Tank requires regular checks to ensure no fat or oils have formed at the top of the chamber. **If not regularly checked the float may malfunction which will invalidate warranty.**
- Tank requires checking for solids build-up. Installation is required by a registered plumber.
- Check regularly for build-up of solids or any other matter in pump chambers.
- Periodically wash down the inner walls of the chamber with a high-pressure hose to activate pump and thus flush out the chamber.
- Check that the vent pipe is also clean and free of any obstruction.

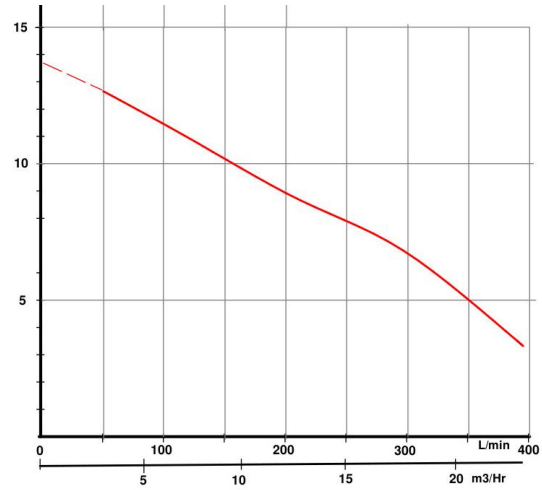
Please check on our website (www.gorillapumpstations.co.nz) for warranty conditions.

Read the pump instruction manual supplied with the pump.

Pump Specs



VH100



TPG100 (N)

Performance	Head Height
125L/m	2m
120L/m	5m
110L/m	7m
100L/m	9m
95L/m	10m
Shutoff	10m

FGP 'Fighter'

Promax 1300L Pump Chamber Specs

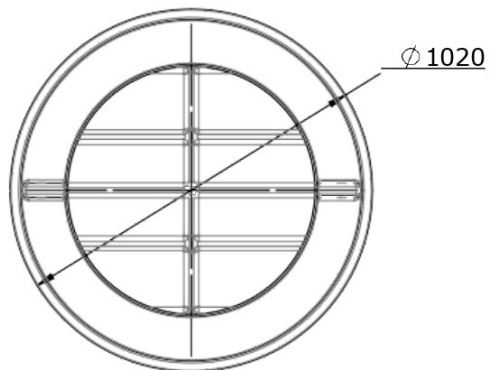
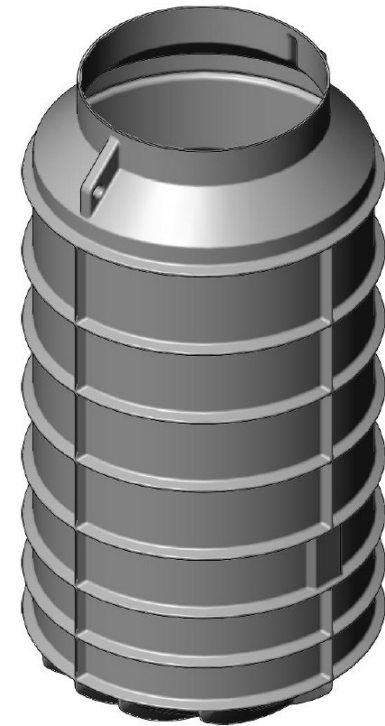
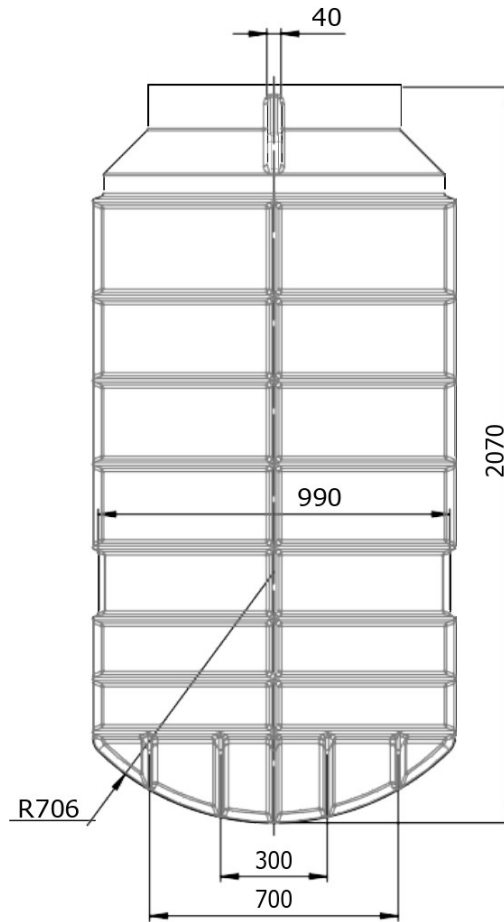
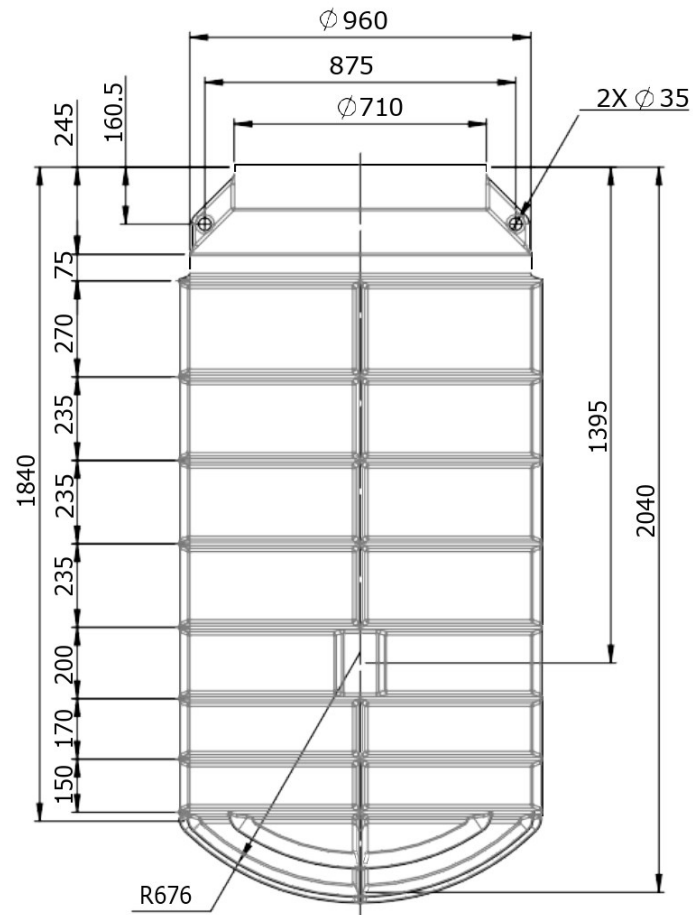
Model **UXCH01300BK**

Capacity **1300L**

Material Type **LLDPE**

Lid Type **600mm Plastic or Cast**

Standard Manufactured To AS/NZS 3500 & 1546.1



The 'King Koba'

1300 Litre Pump Chamber

Supplied By



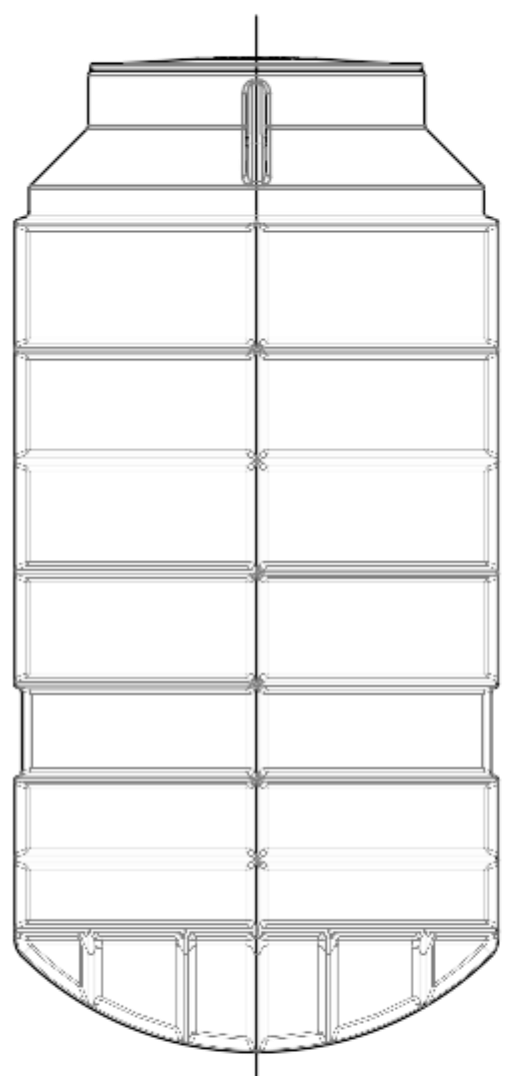
GORILLA PUMP STATIONS

Further and Faster

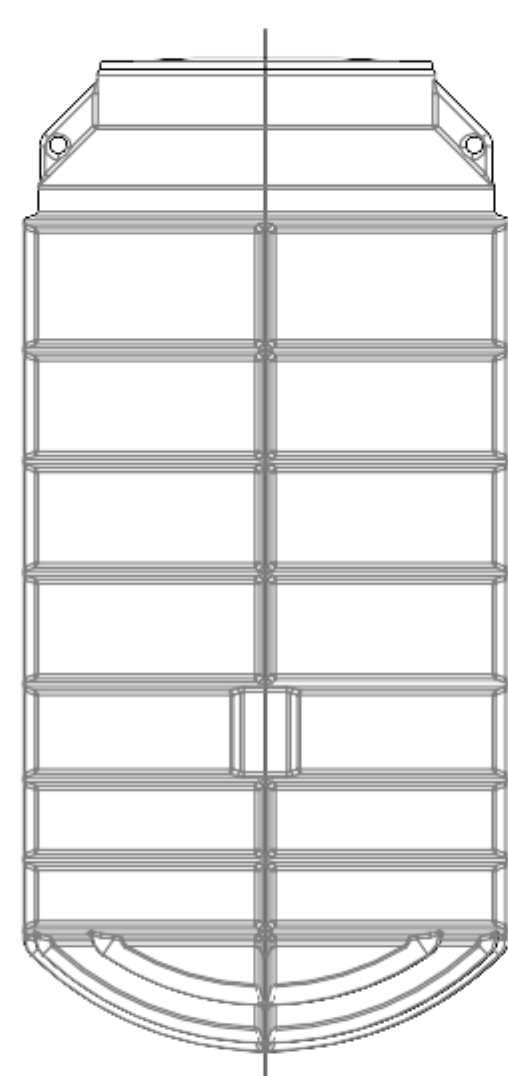
Job Customer:

Title:

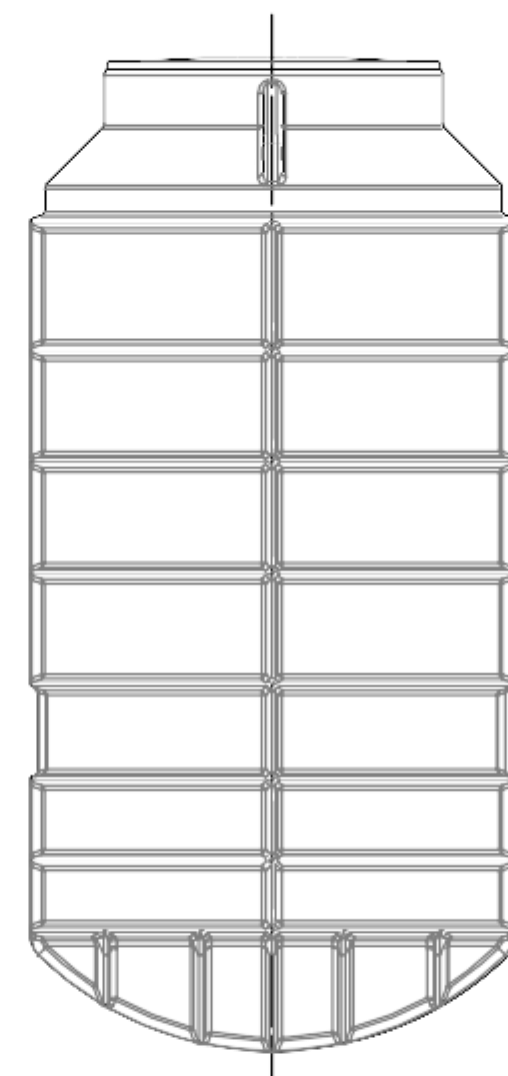
Ref:



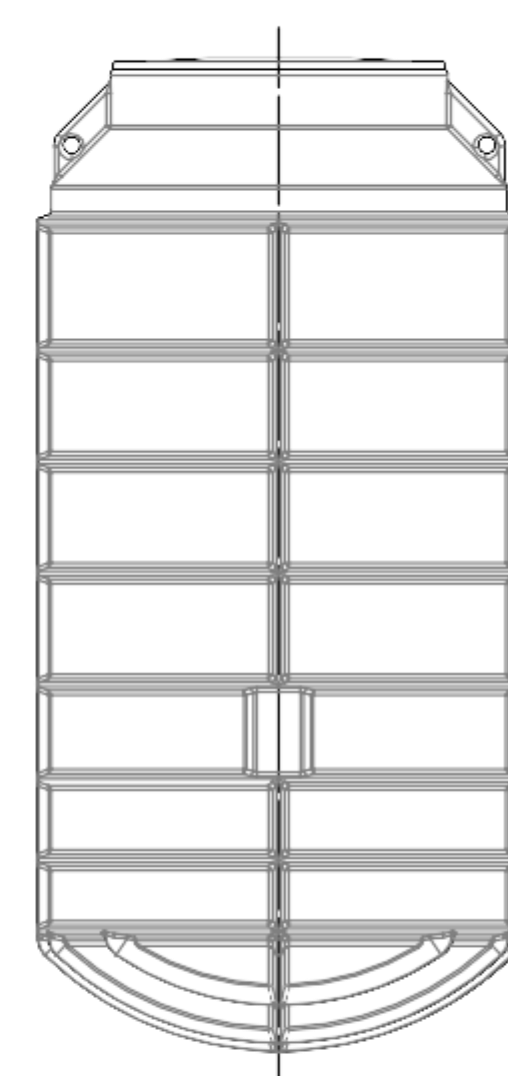
0°



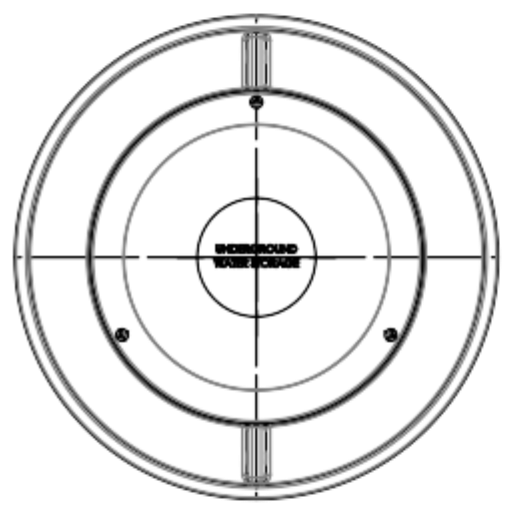
90°



180°



270°



180°

90°

270°

0°



NOTES:

1. LEVEL MARKS ARE IN m, DIMENSIONS ARE IN mm.

The 'King Koba'

Supplied By

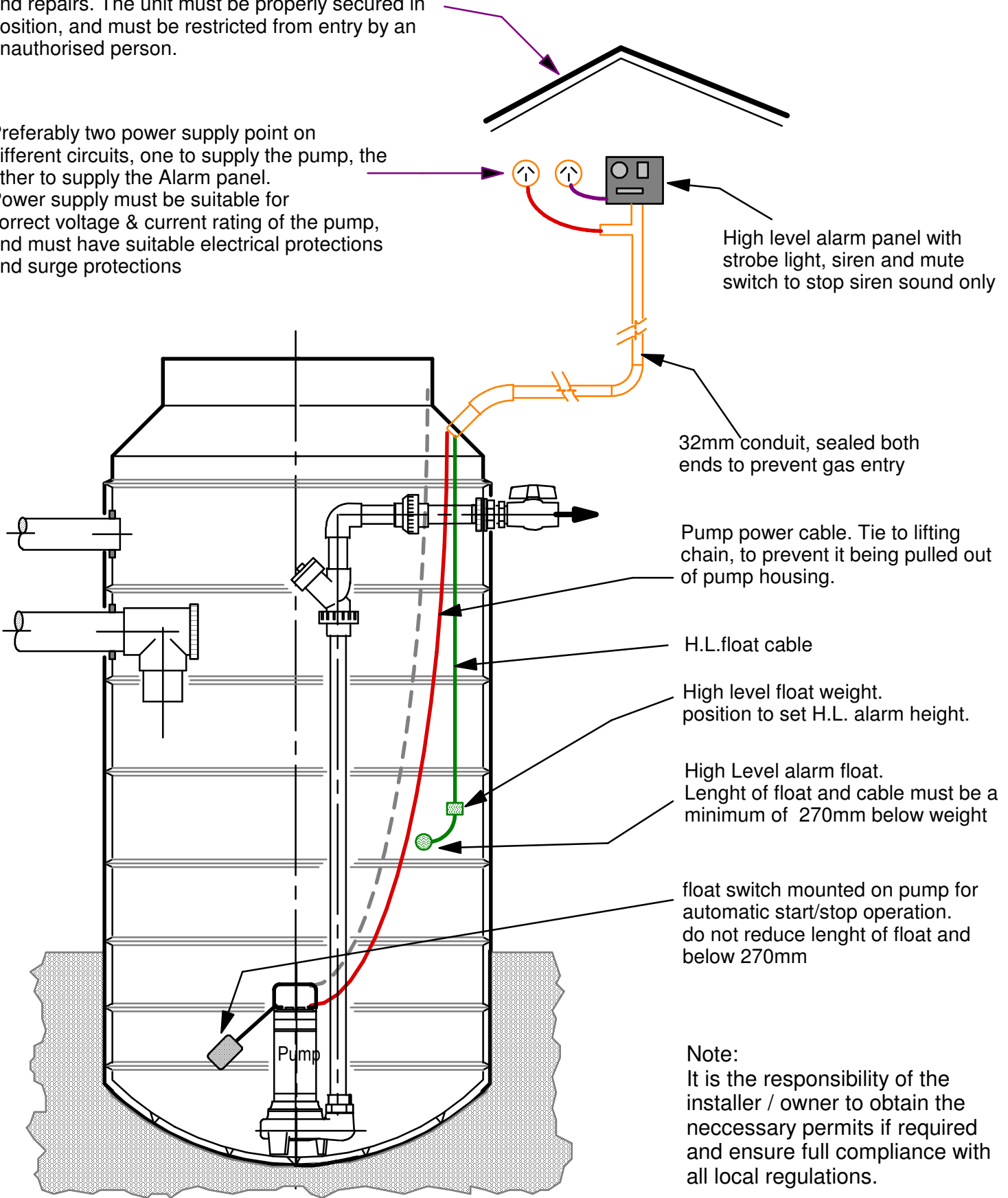


GORILLA PUMP STATIONS

Further and Faster

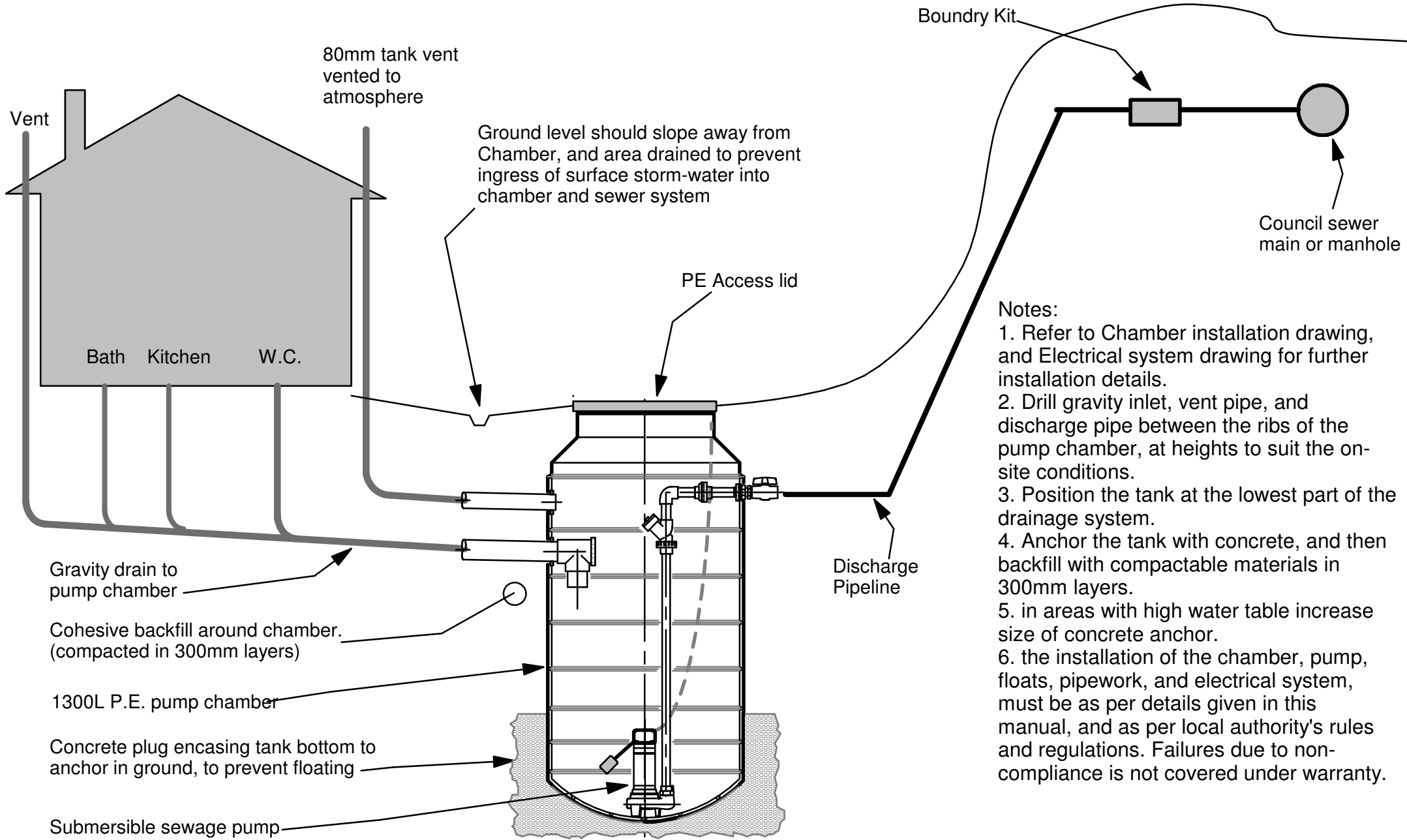
Pump power supply and high level alarm panel must be installed in a Dry, Moisture Free, and Weatherproof location, protected from U.V., with easy access for operation, maintenance, servicing and repairs. The unit must be properly secured in position, and must be restricted from entry by an unauthorised person.

Preferably two power supply point on different circuits, one to supply the pump, the other to supply the Alarm panel. Power supply must be suitable for correct voltage & current rating of the pump, and must have suitable electrical protections and surge protections



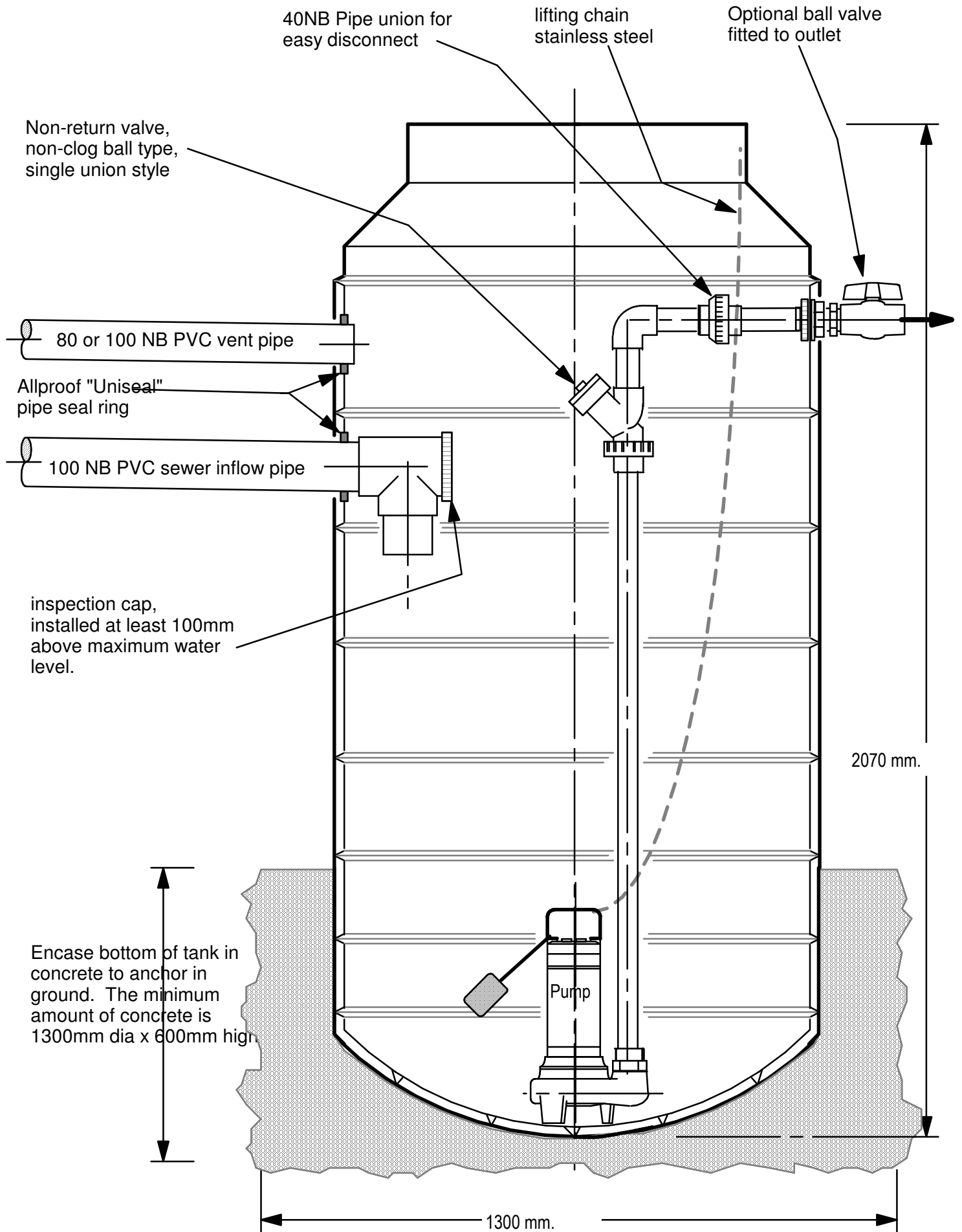
Typical Installation of electrical system in King Koba 1300L Pump Chamber

Date: Oct 2025
Scale n.t.s.
Drg # KK1300E



**Typical Plumbing schematic for King Koba
1300L Pump Chamber**

Date: Oct 2025
Scale n.t.s.
Drg # KK1300B



**Typical Installation drawing for King Koba
1300L Pump Chamber**

Date: Oct 2025
Scale 1:10
Drg # KK1300A