



Eco Water Solutions

www.ecowater.co.nz

021 745 335



GORILLA PUMP STATIONS

Further and Faster

115L Litre Greywater Drainage Pump

Installation Instructions

EL115Grey

Please refer to www.level.org.nz's greywater recycling guidelines for the safe use of this system

<https://www.level.org.nz/water/wastewater/on-site-wastewater-treatment/greywater-recycling/>

Thank you for purchasing a Gorilla Pumps Station 115L greywater pump station. These units are designed as a solution for greywater disposal.

Unpacking

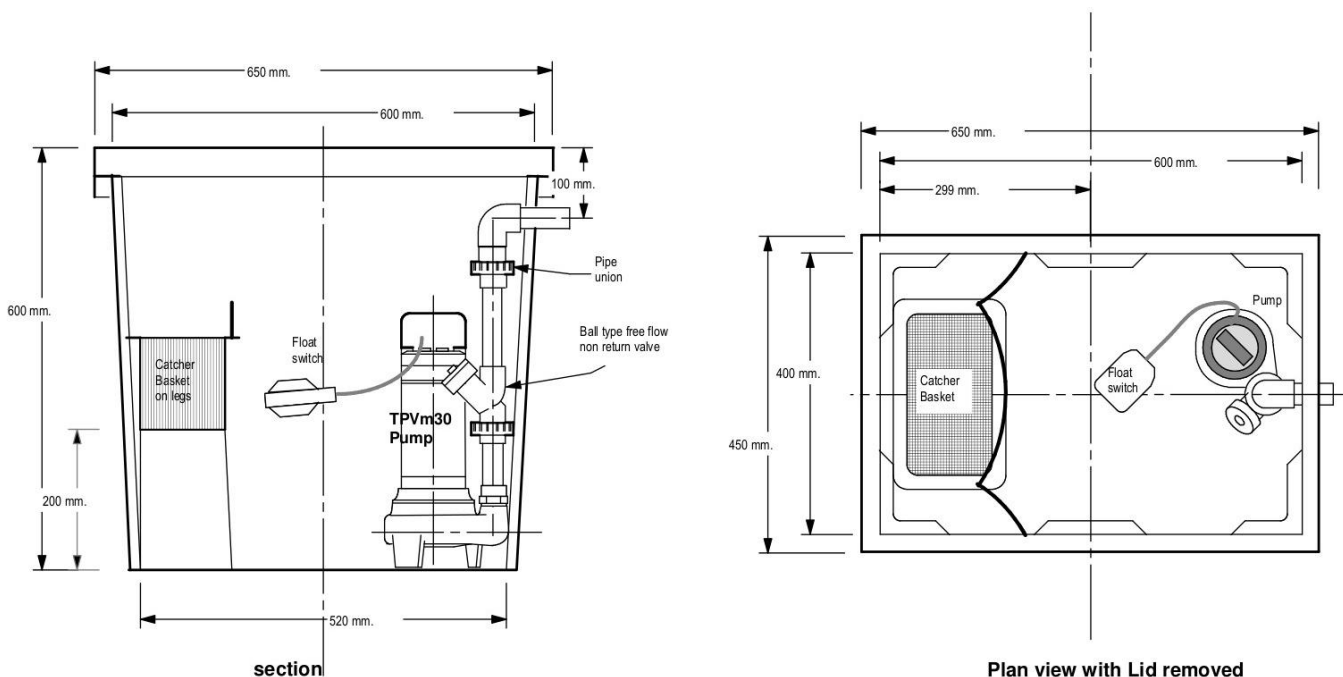
Before purchasing your unit, please ensure it meets regulatory requirements for its application.

Remove the lid of the tank as the pump is packed within a carton inside the 115L plastic tank. Underneath the pump are the discharge pipe fittings and valves.

Remove all packaging. When unpacking please check for possible damage caused in transit.

Check that the correct pump is installed in the unit

General dimensions

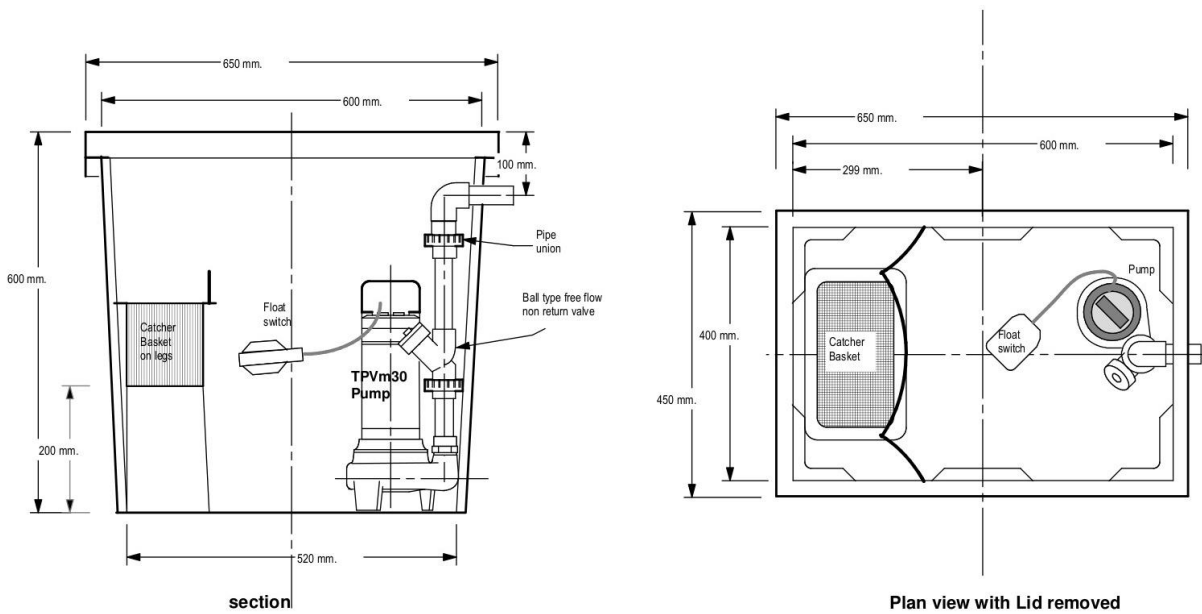


Outlet connection

The outlet is a 25mm BSP-female screwed socket, normally located on right hand side when facing the inlet connection. If requested at time of ordering it can be located on the left side or on the inlet end.

Inlet Connection

Inlet connection is a 110mm i.d. socket. Use Plumbquick for inlet or use blanking insert with silicon and cut 40mm or 50mm at inlet with a male & female waste socket or pipe seal. The NZ standard 110mm dia pipe will slide inside the socket for a tight fit. However due to the grade of plastic it cannot be glued in place, and we recommend a Plumbquick rubber joiner.



The tank lid is constructed from a polyester resin concrete mixture. It is very strong and is able to be walked on if the tank is properly installed in the ground.

The tank and lid are not designed to take the weight of vehicular traffic, so do not install in driveways or vehicle parking places.

The lid sits into a groove in the top of the tank. When digging a hole to install the tank in ground, we recommend a minimum of 75mm of level wet concrete be placed in the bottom of the hole and the tank nestled into that level, in order to anchor it in place- or the tank can be placed on level ground.



Cable outlet pictured

If the tank is located in a position that will mean that it will be regularly walked on, we recommend surrounding the top of the tank with concrete as well.

Cable Installation

An RCD (Residual Current Device) must be used with this product

The 50mm pipe connection fitting is supplied loose so that you can install it in the best position to suit site conditions for cable. To install use a holesaw to cut a hole 60mm diameter, then fit the male part within the tank inserting the threaded portion through the hole, and then screw the female part on to it outside the tank and tighten.

The purpose of this fitting is to provide connection for a 50mm cable conduit.

The conduit pipe is required to act as a conduit for the pump power cable, as any cable installed in-ground requires installation in a conduit. A 50mm pipe will pass a 3-pin plug, and this enables installation without cutting the power cable, and so this eliminates the need for an electrician (electrical conduit is required)

The 50mm white plug is cut for cable to slide into.

Use a Plumbquick to join tank connection to the conduit.

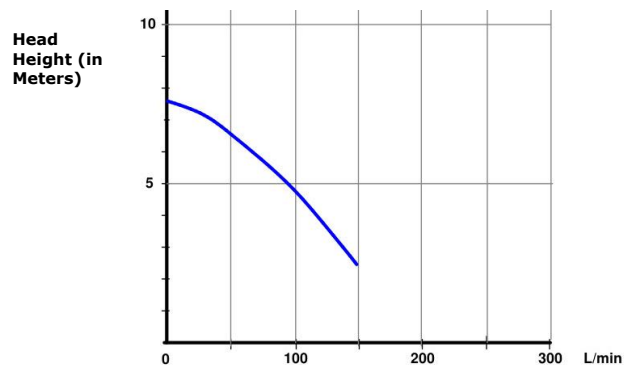
Tip: *if you ever withdraw the pump from the tank and need to remove the cable, tie a piece of string to the plug so that you can pull it back through the electrical conduit later.*

When installing, draw as much cable out through the electrical conduit as possible, rather than let it coil up inside the tank.

>> *Never lift the pump by the cable, as that will damage the pump.
Always lift using the handle on top of the pump.*

Pump Specs

The unit is equipped with a 250w vortex pump capable of passing up to 20mm soft solids. Pump performance with a 32mm outlet is shown below.



TPV-30

Read the pump instruction manual supplied with the pump.

A 50mm connection is fitted c/w seal plug for pump plug to be connected to 50 meter electrical conduit. This is needed if pump needs to be replaced or serviced. **Reducing conduit size will invalidate warranty.**

Use Plumbquick connector between plug outlet and conduit.

Maintenance

- ***Remove and clean waste basket weekly***
- Check regularly for build-up of solids or any other matter in pump chambers.
- Periodically wash down the inner walls of the chamber with a high-pressure hose to activate pump and thus flush out the chamber.
- Check that the vent pipe is also clean and free of any obstruction

