

Non-return valve. Can be disassembled to clear any blockage



750w Centrifugal Pump

With a stainless steel body and automatic float switch operation

Two Mac Unions

To remove non-return valve for inspection

Strong ribbed tank. Can be buried in-ground

Inbuilt handles

Electric cable outlet. Can be connected to 50mm ducting.



Low-density alkathene connector

Shut-off ball valve

Outlet pipe. Can be installed in any direction (365 degrees)



GORILLA PUMP STATIONS

Further and Faster



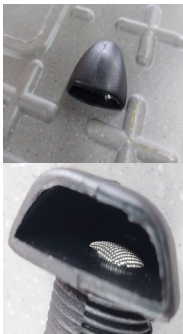
100mm plumbed inlet.

Pictured with free 100mm
-80mm reducer

Optional Extra



100mm drain assembly connects
40mm alkathene into your existing
drainage system.



Vented lid

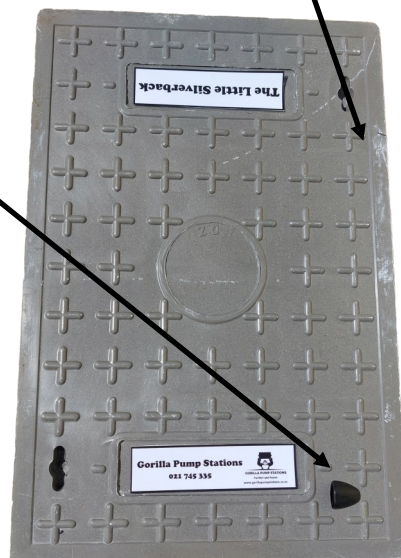
With protective
mesh (see
photos to left)

Strong lid. Can be walked upon and
removed for access and cleaning



Tank Side Profile

Showing handles
and ribbing



Size: 115L