

Falls Meat Service Annual Beef and Pork Sale!

Beef: \$3.19/lb
Available ¼, ½,
or Whole

Pork: \$1.89/lb
Available ½, or
Whole

**FALLS
MEAT SERVICE**
www.fallsmeatsservice.com
715-983-2211



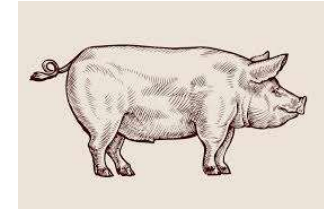
Beef \$3.19/lb

(Hanging weight)

Average ¼ weighs
200lbs and includes
approximately:

- 8 Roasts (3# Each)
- 7-8 Ribeye Steaks
- 4 T-Bone Steaks
- 4 Porterhouse Steaks
- 6 Sirloin Steaks
- 3-4 Tenderloin Steaks
- Soup Bone, Short
Ribs, and other cuts
upon request.
- **60-70# Ground
Beef**
- Sausage Products and
Hamburger Patties
also available at an
additional cost.

Typical ¼ costs \$640.00



Pork \$1.89/lb

(Hanging weight-curing, smoking
and sausage extra)

Average ½ Hog weighs 90-
100lbs and includes
approximately:

- 3 Pork Roasts (3# Each)
- 8-10 Pork Steaks or Butt
Bacon
- 25-30 Pork Chops
- 10-12# Smoked Bacon or
Fresh Sidepork
- 16-18# Ham (Fresh,
Smoked, or Pulled Pork)
- Shanks, Spare Ribs, and
other cuts available.
- 10-12# Trim (Ground
Pork, Seasoned. Italian,
Brats, or Links)

**Typical ½ with extras cost
\$260.00**