

Falls Meat Service Annual Beef and Pork Sale!

Beef: \$3.09/lb
Available ¼, ½, or
Whole

Pork: \$1.79/lb
Available ½, or
Whole

**FALLS
MEAT SERVICE**
www.fallsmeat-service.com
715-983-2211



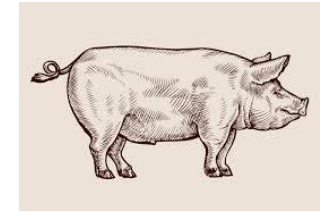
Beef \$3.09/lb

(Hanging weight)

Average ¼ weighs
175lbs and includes
approximately:

- 8 Roasts (3# Each)
- 7-8 Ribeye Steaks
- 4 T-Bone Steaks
- 4 Porterhouse Steaks
- 6 Sirloin Steaks
- 3-4 Tenderloin Steaks
- Soup Bone, Short
Ribs, and other cuts
upon request.
- **60-70# Ground
Beef**
- Sausage Products and
Hamburger Patties
also available at an
additional cost.

Typical ¼ costs \$540.00



Pork \$1.79/lb

(Hanging weight-curing,
smoking and sausage extra)

**Average ½ Hog weighs
90-100lbs and includes
approximately:**

- **3 Pork Roasts (3#
Each)**
- **8-10 Pork Steaks or
Butt Bacon**
- **25-30 Pork Chops**
- **10-12# Smoked Bacon
or Fresh Sidepork**
- **16-18# Ham (Fresh,
Smoked, or Pulled
Pork)**
- **Shanks, Spare Ribs,
and other cuts
available.**
- **10-12# Trim (Ground
Pork, Seasoned.
Italian, Brats, or
Links)**

**Typical ½ with extras cost
\$240.00**