



Ostomy Pouches and Accessories





IMPROVING LIVES IS OUR SPECIALTY

Our mission is simple, to improve the life of every person who uses our products.

WHY CHOOSE US?

Together our team holds over 25 U.S. and worldwide patents on medical devices and process improvements. We are committed to making Fortis Medical Products the leader in medical product innovations that enhances patient care.

INDEX

Ostomy Accessories:

Adhesive Removers	4
Skin Barrier Films	5
Skin Barrier Seals	6-9
Ostomy Pastes	10-11
Ostomy Powder	11
Skin Barrier Extensions	12-14
Skin Barrier Sheets	15
Odor Eliminators.....	16-17
Ostomy Appliance Cleaner	17
Ostomy Pouch Disposable Bags	18

Pouches:

One Piece Drainable Pouches.....	19-23
One Piece Urostomy Pouches.....	23-24
One Piece Closed End Pouches.....	24-25
Stoma Caps.....	25
Barriers / Wafers	26-29
Two Piece Drainable Pouches.....	29-30
Two Piece Urostomy Pouches.....	30-31
Two Piece Closed End Pouches.....	31

ADHESIVE REMOVER SPRAY AND WIPES

Adhesive Remover Spray - Alcohol Free, No Sting



The Entrust Adhesive Remover Pump Spray is a silicone-based formula that is sting-free and gentle on the skin. It quickly removes adhesive residue from the skin and helps release pouches, skin barriers, or other adhesive products.

Item#	HCPCS	Packaging	Per Case
7104	A4455	4 oz. Bottle	25 Bottles

Adhesive Remover Wipes - Alcohol Free, No Sting

Entrust Adhesive Remover Wipes are silicone-based and sting-free. This skin-friendly product quickly removes adhesive residues from the skin. 1.5" x 3" wipe.



Item#	HCPCS	Packaging	Per Case
5100	A4456	100 Sachets per box	20 Boxes

Advanced Ostomy Adhesive Remover Wipes

Entrust Advanced Ostomy Adhesive Remover Wipes were designed to be used by individuals with a stoma. Removes adhesive residue and debris from the skin. No oils, no rinse, no sting. 5"x7" wipe.



Item#	HCPCS	Packaging	Per Case
5700	A4456	50 Wipe Flow Pack	24 Packs
5701	A4456	50 Wipes	24 Boxes

SKIN BARRIER SPRAY AND WIPES

Skin Barrier Film Spray - Alcohol Free, No Sting



Entrust Sting-free Skin Barrier Film Spray provides a transparent protective coating on the skin surface. It is ideal for the Crusting Technique and dries quickly. It protects the skin from damage associated with body waste, enzymes, and adhesives.

Item#	HCPCS	Packaging	Per Case
7202	A4369	2 oz. Bottle	26 Bottles

*Use with Entrust Skin Barrier Powder to increase Crusting

Skin Barrier Film Wipes - Alcohol Free, No Sting

Entrust Skin Barrier Film Wipes form a barrier on the skin surface to protect it from bodily waste, enzymes, and adhesives. They are ideal for Crusting. 1.5"x3" wipe.



Item#	HCPCS	Packaging	Per Case
5200	A5120	100 Sachets per box	20 Boxes

*Use with Entrust Skin Barrier Powder to increase Crusting

Skin Barrier Film Wipes - Alcohol Free, No Sting

Entrust Skin Barrier Film Large Wipes are designed to form a barrier on the skin surface to protect it from bodily waste, enzymes, and adhesives. Ideal for the crusting technique. 5"x7" wipe.



Item#	HCPCS	Packaging	Per Case
5201	A5120	25 Wipes	48 Boxes

*Use with Entrust Skin Barrier Powder to increase Crusting

SKIN BARRIER SEALS



Entrust Conforming Adhesive Seals

Benefits:

- Turtleneck Effect Prevents Leaks
- Comfortable & Skin Friendly
- Highly Absorbent
- Easy to Mold & Stretch
- Durable, Longer Wear Time
- Easily Removable
- Excellent Adhesive Tack
- Stable During Hydration



- Non-silver based Antibacterial formula
- Fights and prevents MRSA, Candida and other skin pathogens within the dressing
- Patented and 510k cleared

What is FortaGuard?
It's a patented antibacterial formula designed to minimize bacteria within the dressing.

SKIN BARRIER SEALS

Skin Barrier Seals - Thin

Entrust Conforming Seals are suitable for any type of Ostomy. These seals enhance the security and fit of your pouching system, preventing leaks and supporting healthy peristomal skin.



Item#	HCPCS	Ring Outer Diameter	Packaging	Per Case
6100	A4385	2"	20 per Box	20 Boxes
6000	A4385	4"	10 per Box	20 Boxes



Item#	HCPCS	Ring Outer Diameter	Packaging	Per Case
6100F	A4385	2"	20 per Box	20 Boxes
6000F	A4385	4"	10 per Box	20 Boxes

SKIN BARRIER SEALS

Skin Barrier Seals - Standard

Entrust Conforming Seals: Standard thickness adds extra security and comfort to any pouching system, preventing ostomy drainage from getting under the pouch barrier. Each seal has an outer diameter of 2".

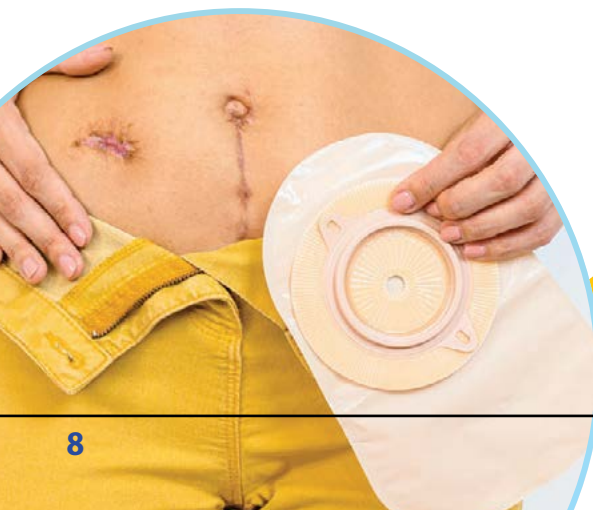


Item#	HCPCS	Packaging	Per Case
6101	A4385	20 per Box	20 Boxes



Item#	HCPCS	Packaging	Per Case
6101F	A4385	20 Per Box	20 Boxes

Made in the U.S.A. by a Veteran Owned Business
Proudly supporting local business and veterans



SKIN BARRIER SEALS

Skin Barrier Seals - Fortify

Entrust Fortify Seals are ideal for those with a Colostomy. These seals provide a secure and comfortable seal around the stoma to prevent leakage with minimal absorption of fluids. Stretches and molds easily to fit around the stoma. 2" Outer diameter.



Item#	HCPCS	Packaging	Per Case
6102	A4385	20 per Box	20 Boxes

Skin Barrier Seals - Duet

Entrust Duet Seals are a dual layered formula ideal for all types of ostomies. Each side of the seal performs differently when placed against the skin to absorb more or less liquid to accommodate your stoma discharge. Easily stretches and molds around the stoma for a secure fit and extended wear time. 2" outer diameter.



Item#	HCPCS	Packaging	Per Case
6103	A4385	20 per Box	20 Boxes

SKIN BARRIER PASTES

Stoma Paste

Entrust Stoma Paste with Pectin is designed to be pliable for easy application around the stoma or for filling in gaps, scars, folds, and uneven skin surfaces. It is less sticky to the touch, and more adhesive to the skin, ensuring a good seal without leaving residue on your fingers.



Item#	HCPCS	Packaging	Per Case
6300	A4406	2 oz. Tube	24 Tubes



Item#	HCPCS	Packaging	Per Case
6300F	A4406	2 oz. Tube	24 Tubes

No Sting Skin Barrier Paste

Entrust No Sting Skin Barrier Paste is specially designed for sensitive skin. It contains no alcohol and helps minimize leaks by preventing 'pancaking'. This paste also helps preserve the skin's health around the stoma.



Item#	HCPCS	Packaging	Per Case
6301	A4406	2 oz. Tube	24 Tubes



Item#	HCPCS	Packaging	Per Case
6301F	A4406	2 oz. Tube	24 Tubes

SKIN BARRIER PASTES

Fast Drying Stoma Paste

Entrust Fast Drying Stoma Paste is designed to quickly dry in place to provide a secure seal around the stoma, or used to fill in gaps and uneven surfaces eliminating leakage under the wafer.



Item#	HCPCS	Packaging	Per Case
6302	A4406	2 oz. Tube	24 Tubes

OSTOMY POWDER

Ostomy Protective Powder



The Entrust Stoma Powder is specially designed to protect the skin and help the pouching system adhere better. It fills in cracks and creases on the peristomal skin, creating a smooth surface. The powder can be easily applied using the puff bottle.

Item#	HCPCS	Packaging	Per Case
6800	A4371	1 oz. Bottle	40 Bottles
6805	A4371	5 oz. Bottle	40 Bottles

*Use with Entrust Skin Barrier Paste to increase Crusting

SKIN BARRIER EXTENSIONS

Benefits:

- Pre-shaped Hydrocolloid for Easier Application
- Water-resistant to help prolong wear time
- Thin and Comfortable
- Skin Friendly
- Secure Fit
- Minimize Leaks
- Promotes Healing of Compromised Skin



Crescent Barrier Extensions

Entrust Crescent-Shaped Barrier Extensions are made with a gentle adhesive that's easy to put on and stretches with your skin so you can move around comfortably. They can also be used under appliances for additional skin protection. Use 3 crescent barriers per application.



Item#	HCPCS	Packaging	Per Case
6200	A4362	30 pieces per Tray	50 Trays



FORTAGUARD
Antibacterial

Item#	HCPCS	Packaging	Per Case
6200F	A4362	30 pieces per Tray	50 Trays

SKIN BARRIER EXTENSIONS

“C” Shaped Barrier Extensions

Entrust “C”-shaped barrier Extensions are designed with a strong adhesive that is gentle to the skin. They are easy to apply, super thin, and stretch with the skin, allowing for freedom of movement. They are engineered specifically to be wider in the middle for enhanced adhesion. Use 2 “C”-shaped barriers per application.



Item#	HCPCS	Packaging	Per Case
6210	A4362	20 pieces per Tray	50 Trays



FORTAGUARD
Antibacterial

Item#	HCPCS	Packaging	Per Case
6210F	A4362	20 pieces per Tray	50 Trays

“Y” Shaped Barrier Extensions

Entrust “Y”-shaped barrier Extensions provide additional coverage to the skin surface, increasing security and comfort. The thin, pre-shaped hydrocolloid allows for easier and more secure pouch application. Use up to 2 extensions per application.



Item#	HCPCS	Packaging	Per Case
6220	A5121	30 pieces per Tray	50 Trays



FORTAGUARD
Antibacterial

Item#	HCPCS	Packaging	Per Case
6220F	A5121	30 pieces per Tray	50 Trays

SKIN BARRIER EXTENSIONS

Extra Wide Barrier Extensions



Entrust Extra Wide Barrier Extensions are designed with a strong adhesive that is gentle to the skin. They are easy to apply, super thin, and stretch with the skin, allowing for freedom of movement. They are engineered specifically to be wider for enhanced adhesion and security. Use 3 extra wide barriers per application.

Item#	HCPCS	Packaging	Per Case
6230	A5121	30 pieces per Tray	50 Trays



Item#	HCPCS	Packaging	Per Case
6230F	A5121	30 pieces per Tray	50 Trays



SKIN BARRIER SHEETS

Skin Barrier Sheets



Entrust Skin Barrier Sheets are a thin hydrocolloid shaped in a square to provide comfort under the pouching system. Absorbent sheets protect the skin from allergic reactions to pouch adhesives and will absorb moisture from broken weeping skin. Cut to fit, Non-sterile.

Item#	Size	HCPCS	Packaging	Per Case
6702	2"x2"	A4362	10per Box	10 Boxes
6704	4"x4"	A4362	5 per Box	10 Boxes
6706	6"x6"	A5121	5 per Box	10 Boxes

Skin Barrier Sheet Ultra



Entrust Skin Barrier Sheet Ultra are a thin hydrocolloid that contains Aloe and Zinc Oxide to soothe irritated skin and help prevent breakouts. Shaped in a square to provide comfort under the pouching system. Absorbent sheets protect the skin from allergic reactions to pouch adhesives and will absorb moisture from broken weeping skin. Cut to fit, Non-sterile.

Item#	Size	HCPCS	Packaging	Per Case
6712	2"x2"	A4362	10 per Box	10 Boxes
6714	4"x4"	A4362	5 per Box	10 Boxes
6716	6"x6"	A5121	5 per Box	10 Boxes

OSTOMY ODOR ELIMINATORS

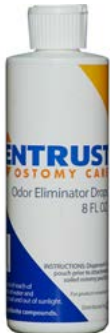
Lubricating Odor Eliminator



Entrust Lubricating Odor Eliminator is specially formulated to be gentle on the stoma and tissue while effectively eliminating odor. It lubricates the pouch for easy draining and helps minimize “pancaking”. It also features an easy-to-control nozzle for convenient dispensing.

Item#	HCPCS	Packaging	Per Case
6401	A4394	1 oz. Bottle	24 Bottles
6400	A4394	8 oz. Bottle	12 Bottles
6425	A4394	.25 oz Pkt	400 Pkts

Odor Eliminator



Entrust Odor Eliminator effectively eliminates odors without any extra scents. Its clear color makes it simple to keep track of the stoma, and the non-staining formula, along with the user-friendly dispenser nozzle, makes it a safe and convenient choice for any pouching system.

Item#	HCPCS	Packaging	Per Case
6601	A4394	1 oz. Bottle	24 Bottles
6602	A4394	4 oz. Bottle	12 Bottles
6600	A4394	8 oz. Bottle	12 Bottles
6625	A4394	.25 oz Pkt	400 Pkts

OSTOMY ODOR ELIMINATORS

Blue Max Odor Eliminator



Entrust Blue Max Odor Eliminator has effective odor control with no perfumes or added scents for discreet protection. The Blue Max formula is appropriate for all types of ostomies. Use 5-10 drops in the pouch when the pouch is emptied or cleaned.

Item#	HCPCS	Packaging	Per Case
6502	A4394	2 oz. Bottle	24 Bottles
6504	A4394	4 oz. Bottle	12 Bottles
6508	A4394	8 oz. Bottle	12 Bottles
6525	A4394	.25 oz Pkt	400 Pkts

OSTOMY APPLIANCE CLEANER

Appliance Cleaner



Entrust Ostomy Appliance Cleaner is specifically formulated to effectively clean and deodorize the interior of ostomy and urinary bags, ensuring clear visibility of the stoma. When paired with our Entrust Odor Eliminator, it delivers effortless cleaning and superior odor control between cleanings.

Item#	HCPCS	Packaging	Per Case
6450	A5131	16 oz. Bottle	12 Bottles
64025	A5131	.25 oz Pkt	400 Pkts

OSTOMY POUCH DISPOSABLE BAGS

Disposable Bags



Ostomy Disposable Bags provide a discreet and convenient way to dispose of used ostomy appliances. TIP: Add a little odor eliminator in the pouch before placing it in the disposal bag for additional odor control.

Item#	HCPCS	Packaging	Per Case
6903	A9999	60 (8"x8") Bags	23 Packages



Entrust Pouch Selections

The Pinnacle of comfort and efficiency for ostomy care.
One-piece and two-piece pouch options for all types
of ostomies by Entrust Ostomy Care.

ENTRUST ONE-PIECE DRAINABLE POUCHES-CLIP CLOSURE



Our one-piece, drainable pouching systems are designed to be open at the bottom for easy emptying. These pouches are suitable for ileostomies and colostomies. There are many pouch options available for standard and extended wear use.

Box of 10 | Transparent | Standard Wear | 12" Drainable

Item#	HCPCS	Barrier Type	Cut-to-Fit or Pre-Cut Size	Pouch Length	Filter	Comfort Panel	Belt Tabs
1100	A5061	Flat	CTF: 3/4"-2 1/2"	12"	No	1/sided	No
1101	A5061	Flat	3/4" PC	12"	No	1/sided	No
1102	A5061	Flat	1" PC	12"	No	1/sided	No
1103	A5061	Flat	1 1/4" PC	12"	No	1/sided	No
1104	A5061	Flat	1 1/2" PC	12"	No	1/sided	No
1105	A5061	Flat	1 3/4" PC	12"	No	1/sided	No
1106	A5061	Flat	2" PC	12"	No	1/sided	No
1107	A5061	Flat	2 1/4" PC	12"	No	1/sided	No
1108	A5061	Flat	2 1/2" PC	12"	No	1/sided	No

ENTRUST ONE-PIECE DRAINABLE POUCHES-CLIP CLOSURE

Box of 10 | Transparent | Extended Wear | With Dual Hydrocolloid | 12" Drainable

Item#	HCPCS	Barrier Type	Cut-to-Fit or Pre-Cut Size	Pouch Length	Filter	Comfort Panel	Belt Tabs
1200	A4388	Flat	CTF: 3/4"-2 1/2"	12"	No	1/sided	No
1200V	A4388	Flat	CTF: 3/4"-2 1/2"	12"	No	1/sided	No
1200X	A5056	Flat	CTF: 3/4"-2 1/2"	12"	Yes	1/sided	No
1201	A4388	Flat	3/4" PC	12"	No	1/sided	No
1202	A4388	Flat	1" PC	12"	No	1/sided	No
1203	A4388	Flat	1 1/4" PC	12"	No	1/sided	No
1204	A4388	Flat	1 1/2" PC	12"	No	1/sided	No
1205	A4388	Flat	1 3/4" PC	12"	No	1/sided	No
1206	A4388	Flat	2" PC	12"	No	1/sided	No
1207	A4388	Flat	2 1/4" PC	12"	No	1/sided	No
1208	A4388	Flat	2 1/2" PC	12"	No	1/sided	No

V = Velcro Closure X = Charcoal Filter

ENTRUST ONE-PIECE DRAINABLE POUCHES-CLIP CLOSURE



Box of 10 | Transparent | Extended Wear
With Dual Hydrocolloid | Convex | 12" Drainable

Item#	HCPCS	Barrier Type	Pre-Cut Size	Pouch Length	Filter	Comfort Panel	Belt Tabs
12034C	A4390	Convex	3/4" PC	12"	No	1/sided	Yes
12078C	A4390	Convex	7/8" PC	12"	No	1/sided	Yes
12100C	A4390	Convex	1" PC	12"	No	1/sided	Yes
12112CX	A5057	Convex	1 1/2" PC	12"	Yes	1/sided	Yes
12114C	A4390	Convex	1 1/4" PC	12"	No	1/sided	Yes
12114CX	A5057	Convex	1 1/4" PC	12"	Yes	1/sided	Yes
12118C	A4390	Convex	1 1/8" PC	12"	No	1/sided	Yes
12134CX	A5057	Convex	1 3/4" PC	12"	Yes	1/sided	Yes



Box of 10 | Beige | Standard Wear | 12" Drainable

Item#	HCPCS	Barrier Type	Cut-to-Fit Size	Pouch Length	Filter	Comfort Panel	Belt Tabs
1300	A5061	Flat	CTF: 3/4"-2 1/2"	12"	No	1/sided	No
1300X	A4424	Flat	CTF: 3/4"-2 1/2"	12"	Yes	1/sided	No

ENTRUST ONE-PIECE DRAINABLE POUCHES-CLIP CLOSURE

Box of 10 | Beige | Extended Wear | With Dual Hydrocolloid | 12" Drainable

Item#	HCPCS	Barrier Type	Cut-to-Fit Size	Pouch Length	Filter	Comfort Panel	Belt Tabs
1400	A4388	Flat	CTF: 3/4"-2 1/2"	12"	No	1/sided	No
1400V	A4388	Flat	CTF: 3/4"-2 1/2"	12"	No	1/sided	No
1400X	A5056	Flat	CTF: 3/4"-2 1/2"	12"	Yes	1/sided	No

V = Velcro Closure X = Charcoal Filter



Box of 10 | Transparent | Standard Wear | 9" Drainable

Item#	HCPCS	Barrier Type	Cut-to-Fit Size	Pouch Length	Filter	Comfort Panel	Belt Tabs
1500	A5061	Flat	CTF: 3/4"-2 1/2"	9"	No	1/sided	No

ENTRUST ONE-PIECE UROSTOMY POUCHES - DRAIN/CAP



Our one-piece urostomy pouching systems are designed with a drain and cap for easy emptying and are suitable for any urostomy.

Box of 10 | Transparent | Extended Wear | With Dual Hydrocolloid

Item#	HCPCS	Barrier Type	Cut-to-Fit Size	Pouch Length	Filter	Comfort Panel	Belt Tabs
1700	A4391	Flat	CTF: 3/4"-2 1/2"	9"	No	1/sided	No

ENTRUST ONE-PIECE UROSTOMY POUCHES - DRAIN/CAP



Box of 10 | Transparent | Extended Wear
With Dual Hydrocolloid | Convex

Item#	HCPCS	Barrier Type	Pre-Cut Size	Pouch Length	Filter	Comfort Panel	Belt Tabs
17034C	A4393	Convex	3/4" PC	9"	No	1/sided	Yes
17078C	A4393	Convex	7/8" PC	9"	No	1/sided	Yes
17100C	A4393	Convex	1" PC	9"	No	1/sided	Yes
17112C	A4393	Convex	1 1/2" PC	9"	No	1/sided	Yes
17114C	A4393	Convex	1 1/4" PC	9"	No	1/sided	Yes
17118C	A4393	Convex	1 1/8" PC	9"	No	1/sided	Yes
17134C	A4393	Convex	1 3/4" PC	9"	No	1/sided	Yes

ENTRUST ONE-PIECE CLOSED END POUCHES



Our one-piece, closed end pouch is designed to be removed after use. The pouches are suitable for colostomies or for stomas with less frequent or more predictable output.

Box of 30 | Transparent | Standard Wear

Item#	HCPCS	Barrier Type	Cut-to-Fit Size	Pouch Length	Filter	Comfort Panel	Belt Tabs
4100X	A4416	Flat	CTF: 3/4"-2 1/2"	8"	Yes	1/sided	No

ENTRUST ONE-PIECE CLOSED END POUCHES



Box of 30 | Beige | Standard Wear

Item#	HCPCS	Barrier Type	Cut-to-Fit Size	Pouch Length	Filter	Comfort Panel	Belt Tabs
4200X	A4416	Flat	CTF: 3/4"-2 1/2"	8"	Yes	1/sided	No

ENTRUST STOMA CAPS



Our one-piece stoma caps are designed for temporary use during intimacy, swimming, showers, or if you irrigate your stoma and control the output times and only require a small cover.

Box of 30 | Beige | Standard Wear

Item#	HCPCS	Barrier Type	Cut-to-Fit Size	Pouch Length	Filter	Comfort Panel	Belt Tabs
4400	A5055	Flat	CTF: 3/4"-2 1/2"	5"	No	2/sided	No
4400X	A5055	Flat	CTF: 3/4"-2 1/2"	5"	Yes	2/sided	No

ENTRUST BARRIERS/WAFERS

Our pouch barrier/wafers are designed to create a secure seal and protect the peristomal skin. They come in different styles to accommodate various stoma types and adhesive preferences.

Box of 10 | Standard Wear | Tape Collar White | 4"x4"

Item#	HCPCS	Barrier Type	Cut-to-Fit Size	Flange Size
21134W	A4414	Flat	CTF: 3/4"-1 1/4"	1 3/4" Flange
21214W	A4414	Flat	CTF: 3/4"-1 3/4"	2 1/4" Flange



Box of 5 | Extended Wear | With Dual Hydrocolloid | 4"x4"

Item#	HCPCS	Barrier Type	Cut-to-Fit Size	Flange Size
22134W	A4409	Flat	CTF: 3/4"-1 1/4"	1 3/4" Flange
22214W	A4409	Flat	CTF: 3/4"-1 3/4"	2 1/4" Flange



Box of 10 | Standard Wear | Tape Collar Beige | 4 1/4"x4 1/4"

Item#	HCPCS	Barrier Type	Cut-to-Fit or Pre-Cut Size	Flange Size
23134B10	A4415	Flat	1" PC	1 3/4" Flange
23134B14	A4415	Flat	1 1/4" PC	1 3/4" Flange
23134B18	A4415	Flat	1 1/8" PC	1 3/4" Flange
23134B78	A4415	Flat	7/8" PC	1 3/4" Flange



Box of 10 | Standard Wear | Tape Collar White | 4 1/4"x4 1/4"

Item#	HCPCS	Barrier Type	Cut-to-Fit Size	Flange Size
23134W	A4415	Flat	CTF: 3/4"-1 1/4"	1 3/4" Flange



ENTRUST BARRIERS/WAFERS

Box of 5 | Extended Wear | With Dual Hydrocolloid | 4 1/4"x4 1/4"

Item#	HCPCS	Barrier Type	Cut-to-Fit Size	Flange Size
24134W	A4410	Flat	CTF: 3/4"-1 1/4"	1 3/4" Flange



Box of 10 | Standard Wear | Tape Collar Beige | 4 1/4"x4 1/4"

Item#	HCPCS	Barrier Type	Cut-to-Fit Size	Flange Size
25134B	A4415	Flat	CTF: 3/4"-1"	1 3/4" Flange



Box of 5 | Standard Wear | Tape Collar Beige | 5"x5" | Convex

Item#	HCPCS	Barrier Type	Cut-to-Fit Size	Flange Size
25134CB	A4373	Convex	CTF: 3/4"-1"	1 3/4" Flange



Box of 10 | Standard Wear | Tape Collar Beige | 5"x5"

Item#	HCPCS	Barrier Type	Cut-to-Fit Size	Flange Size
25214B	A4415	Flat	CTF: 3/4"-1 3/4"	2 1/4" Flange
25234B	A4415	Flat	CTF: 3/4"-2 1/4"	2 3/4" Flange



Box of 10 | Standard Wear | Tape Collar White | 5"x5"

Item#	HCPCS	Barrier Type	Cut-to-Fit Size	Flange Size
25214W	A4415	Flat	CTF: 3/4"-1 3/4"	2 1/4" Flange
25234W	A4415	Flat	CTF: 3/4"-2 1/4"	2 3/4" Flange



ENTRUST BARRIERS/WAFERS

Box of 5 | Standard Wear | Tape Collar White | 5"x5" | Convex

Item#	HCPCS	Barrier Type	Cut-to-Fit or Pre-Cut Size	Flange Size
25134CW	A4373	Convex	CTF: 3/4"-1"	1 3/4" Flange
25134CW10	A4373	Convex	1" PC	1 3/4" Flange
25214CW	A4373	Convex	CTF: 3/4"-1 3/8"	2 1/4" Flange
25234CW	A4373	Convex	CTF: 3/4"-1 7/8"	2 3/4" Flange



Box of 5 | Extended Wear | With Dual Hydrocolloid | 5"x5" | Convex

Item#	HCPCS	Barrier Type	Pre-Cut Size	Flange Size
26134CW10	A4408	Convex	1" PC	1 3/4" Flange
26134CW34	A4408	Convex	3/4" PC	1 3/4" Flange
26134CW78	A4408	Convex	7/8" PC	1 3/4" Flange
26214C134	A4408	Convex	1 3/4" PC	2 1/4" Flange
26214CW14	A4408	Convex	1 1/4" PC	2 1/4" Flange
26214CW18	A4408	Convex	1 1/8" PC	2 1/4" Flange
26214CW38	A4408	Convex	1 3/8" PC	2 1/4" Flange



ENTRUST BARRIERS/WAFERS

Box of 5 | Extended Wear | With Dual Hydrocolloid | 5"x5"

Item#	HCPCS	Barrier Type	Cut-to-Fit Size	Flange Size
26214W	A4410	Flat	CTF: 3/4"-1 3/4"	2 1/4" Flange
26234W	A4410	Flat	CTF: 3/4"-2 1/4"	2 3/4" Flange



ENTRUST TWO-PIECE DRAINABLE POUCHES - CLIP CLOSURE



Our two-piece drainable pouching systems are designed to create a secure, accurate closure with a simple snap together design to fit the barrier/wafer of your choice. Designed for easy emptying.

Box of 10 | Transparent | 12" Drainable

V = Velcro Closure
X = Charcoal Filter

Item#	HCPCS	Flange Size	Pouch Length	Filter	Comfort Panel	Belt Tabs
31134	A5063	1 3/4"	12"	No	1/sided	Yes
31134V	A5063	1 3/4"	12"	No	1/sided	Yes
31134X	A4425	1 3/4"	12"	Yes	1/sided	Yes
31214	A5063	2 1/4"	12"	No	1/sided	Yes
31214V	A5063	2 1/4"	12"	No	1/sided	Yes
31214X	A4425	2 1/4"	12"	Yes	1/sided	Yes
31234	A5063	2 3/4"	12"	No	1/sided	Yes
31234V	A5063	2 3/4"	12"	No	1/sided	Yes
31234X	A4425	2 3/4"	12"	Yes	1/sided	Yes

ENTRUST TWO-PIECE DRAINABLE POUCHES - CLIP CLOSURE

Box of 10 | Beige | 12" Drainable

V = Velcro Closure



Item#	HCPCS	Flange Size	Pouch Length	Filter	Comfort Panel	Belt Tabs
32134	A5063	1 3/4"	12"	No	1/sided	Yes
32134V	A5063	1 3/4"	12"	No	1/sided	Yes
32214	A5063	2 1/4"	12"	No	1/sided	Yes
32214V	A5063	2 1/4"	12"	No	1/sided	Yes
32234	A5063	2 3/4"	12"	No	1/sided	Yes
32234V	A5063	2 3/4"	12"	No	1/sided	Yes

Box of 10 | Beige | 9" Drainable



Item#	HCPCS	Flange Size	Pouch Length	Filter	Comfort Panel	Belt Tabs
34134	A5063	1 3/4"	9"	No	1/sided	Yes
34214	A5063	2 1/4"	9"	No	1/sided	Yes
34234	A5063	2 3/4"	9"	No	1/sided	Yes

ENTRUST TWO-PIECE UROSTOMY POUCHES - DRAIN/CAP



Our two-piece urostomy pouching systems are designed with a drain and cap for easy emptying and a soft bodyside comfort panel. Fits with the barrier/wafer of your choice of adhesives. These pouches are suitable for any urostomy.

Box of 10 | Transparent | 9" Drain/Cap

Item#	HCPCS	Flange Size	Pouch Length	Filter	Comfort Panel	Belt Tabs
37134U	A5073	1 3/4"	9"	No	1/sided	Yes
37214U	A5073	2 1/4"	9"	No	1/sided	Yes
37234U	A5073	2 3/4"	9"	No	1/sided	Yes

ENTRUST TWO-PIECE UROSTOMY POUCHES - DRAIN/CAP

Box of 10 | Beige | 9" Drain/Cap

Item#	HCPCS	Flange Size	Pouch Length	Filter	Comfort Panel	Belt Tabs
38134U	A5073	1 3/4"	9"	No	1/sided	Yes
38214U	A5073	2 1/4"	9"	No	1/sided	Yes

ENTRUST TWO-PIECE CLOSED END POUCHES



Our two-piece closed end pouches allows users to quickly change their pouches without having to change their barrier/wafers. The pouches are suitable for colostomies or for stomas with less frequent or more predictable output.

Box of 30 | Beige | 8" Closed

Item#	HCPCS	Flange Size	Pouch Length	Filter	Comfort Panel	Belt Tabs
36134	A5054	1 3/4"	8"	No	1/sided	Yes
36134X	A4419	1 3/4"	8"	Yes	1/sided	Yes
36214	A5054	2 1/4"	8"	No	1/sided	Yes
36214X	A4419	2 1/4"	8"	Yes	1/sided	Yes
36234	A5054	2 3/4"	8"	No	1/sided	Yes
36234X	A4419	2 3/4"	8"	Yes	1/sided	Yes

Want a Sample?

We are happy to send you a Sample Kit to get you started with our products, please reach out to us and let us know more about your situation.

Available thru:
Major Distributors
Online
Direct Accounts



1451 Sarasota Ctr. Blvd. | Sarasota, FL 34240
855-550-2600 Office
info@fortismp.com | www.fortismp.com