

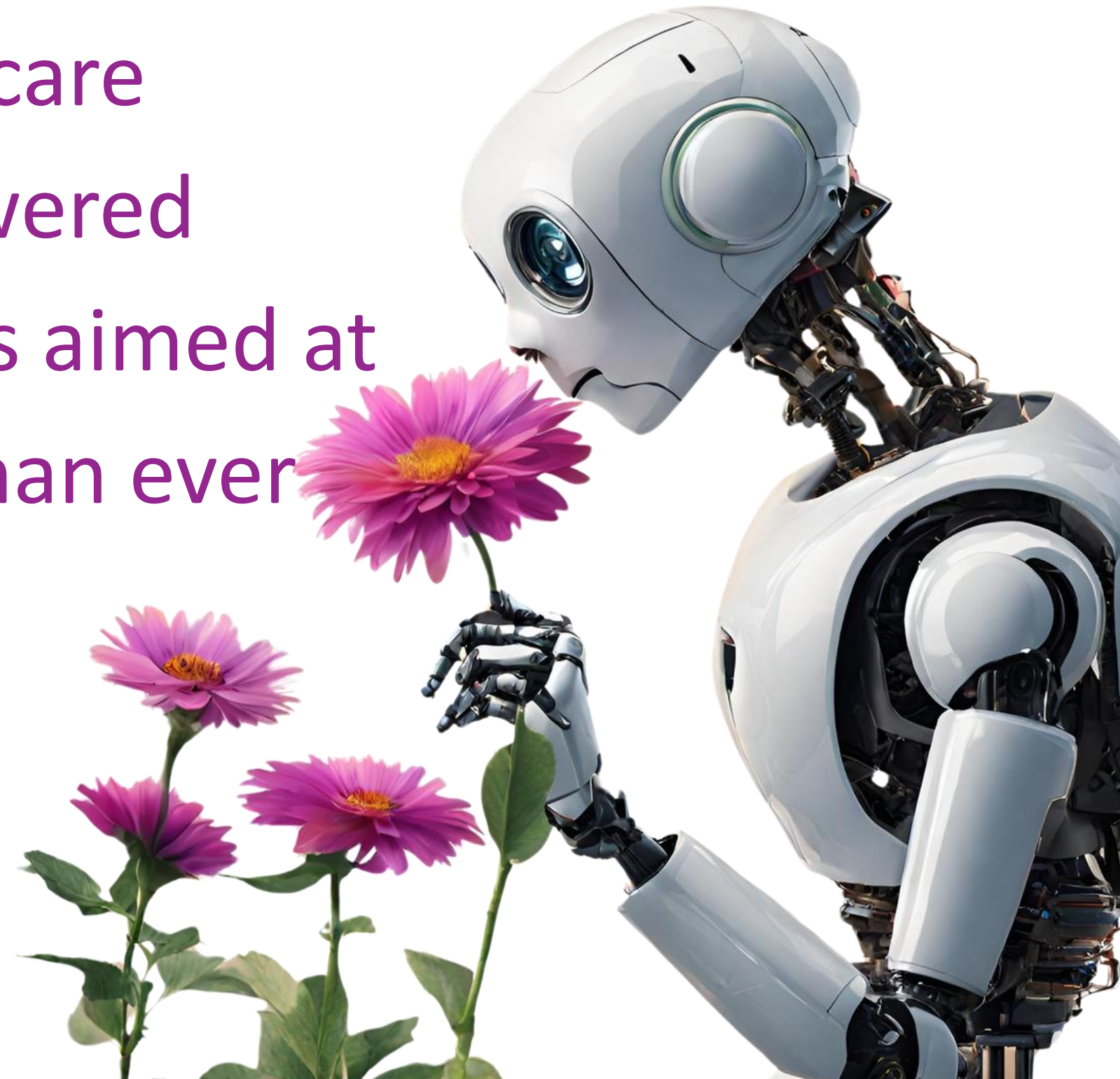
# Simpli-Fi Automation

AI Powered Biomedical Device and Sensor Design

# Imagine If AI Could Smell?

Simpli-Fi is revolutionizing the healthcare industry with our cutting-edge AI powered olfactory sensory technology, which is aimed at making healthcare more accessible than ever before.

Simpli-Fi  
Automation



# Healthcare

Late diagnosis of diseases can reduce treatment effectiveness and recovery chances, leading to worsened patient outcomes and decreased quality of life.

Impact on healthcare systems:

- Increased treatment costs
- Intensive care needs
- Strains on resources

# Environmental Monitoring & Air Quality

Poor air quality poses significant health risks, including respiratory and cardiovascular diseases, by exposing individuals to harmful pollutants like particulate matter and nitrogen dioxide.

- Lung conditions
- Infections
- Heart attacks
- Strokes

# Fitness & Nutrition

Athletes face a variety of challenges when trying to determine the optimal nutrition for human performance.

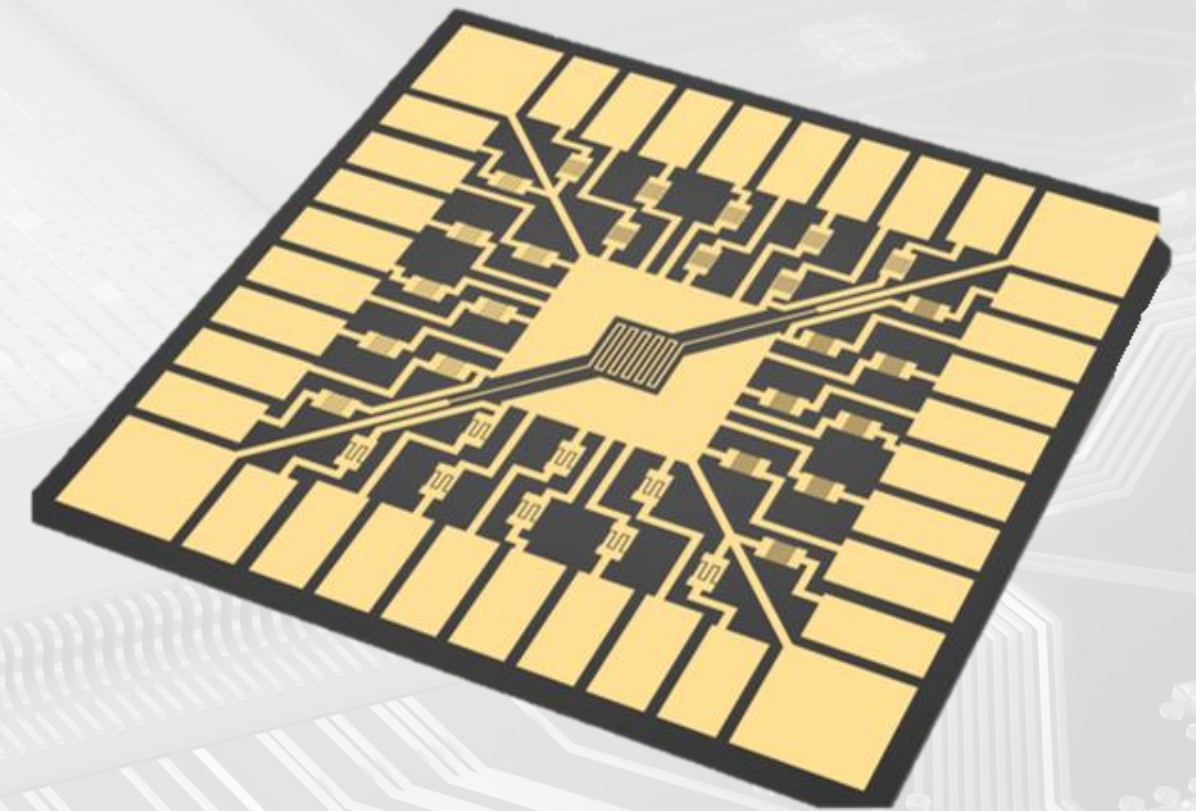
Physiological differences to external factors

- Oxidative Stress
- Digestive Health
- Ketosis: Metabolic Fat burn Rate
- PH Levels
- Hydration
- Fatigue
- Mental Focus

# Introducing PROVECTUS

Imagine integrating a full-scale chemical analysis lab into a sensor chip smaller than a dime!

Provectus: A revolutionary breakthrough in analytical chemistry, providing a compact, portable, and cost-effective solution to lab diagnostics in the palm of your hand.



# Provectus Telehealth

The sensor platform combines state of the art artificial intelligence models with olfactory sensing capabilities to provide real-time chemical analysis.



The Provectus sensor platform incorporates biometric sensors including pulse oximeter, ECG, and temperature for enhance accuracy.

# Provectus & Healthcare

The Provectus Telehealth system, gives access to continuous healthcare to those in need:

- Early Detection of Illnesses
- Non-Invasive Monitoring
- Personalized Healthcare:
- Remote Health Monitoring
- Preventive Healthcare



Monitoring Mom



Long-term Care  
for Loved Ones



Immunocompromised  
Patients



# Provectus & Fitness

A cutting-edge, non-invasive, real-time approach to maximizing human performance through personalized data analytics.

- Analysis
- Readiness
- Hydration levels
- Metabolic rates
- Recovery
- Performance Improvement Recommendations
- Continuous Monitoring

# Provectus & Clinical Environmental Monitoring

The Provectus Canary System provides continuous monitoring for airborne infectious Hazards:

- Measures Particulate Matter (PM), Temperature, Humidity, Carbon Dioxide (CO2), and VOC's
- Inexpensive C-Diff monitoring in environmental room air.
- Uses “scent mapping” to detect airborne pathogens including, Staphylococcus, E. Coli, Streptococcus, Pseudomonas aeruginosa, and more.



Operating Room Air Quality Monitoring



Monitor Shared Spaces



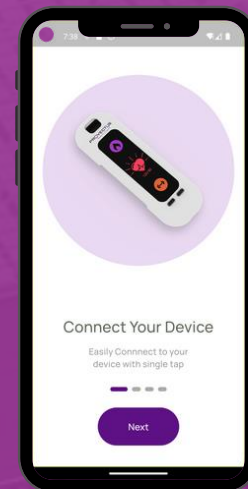
Prevent Hospital Contracted Infection

# Our Innovative Products

Pioneering US-based device medical device manufacturing



Provectus Canary



Caerus Strength  
multi-sensor

**PROVECTUS**  
Telehealth

Simpli-Fi  
Automation

# NFI

NeuroForce1 delivers individualized Human Performance Programs, using the latest technology and sports science to achieve maximum results at any level.



NASA **TECHNOLOGY  
TRANSFER** PROGRAM

Simpli-Fi has licensed cutting-edge NASA e-Nose Breath Biomarker olfactory sensor for Human Medical Diagnostics.



The Cleveland Clinic team serves over 12 million patients a year and has teamed up with Simpli-Fi to develop a non-invasive C-Diff early warning system for the hospital environment.



# Market Validation



**1.3+**

MILLION PATIENT VISITS

**86+**

MILLION U.S. ADULT PATIENTS

**600+**

MILLION PATIENT TESTS

# Market Opportunity

## Telehealth Biometric Sensors

Projected - \$2.7bn in 2024 (U.S.) TAM

- This growth is anticipated to continue with an annual growth rate of 28% (CAGR 2024-2030)

## AI Healthcare

Projected - \$188bn in 2024 (Global) TAM

- This growth is anticipated to continue with an annual growth rate of 37% (CAGR 2024-2030)

## Medical Devices

Projected - \$511.20bn in 2024 (Global) TAM

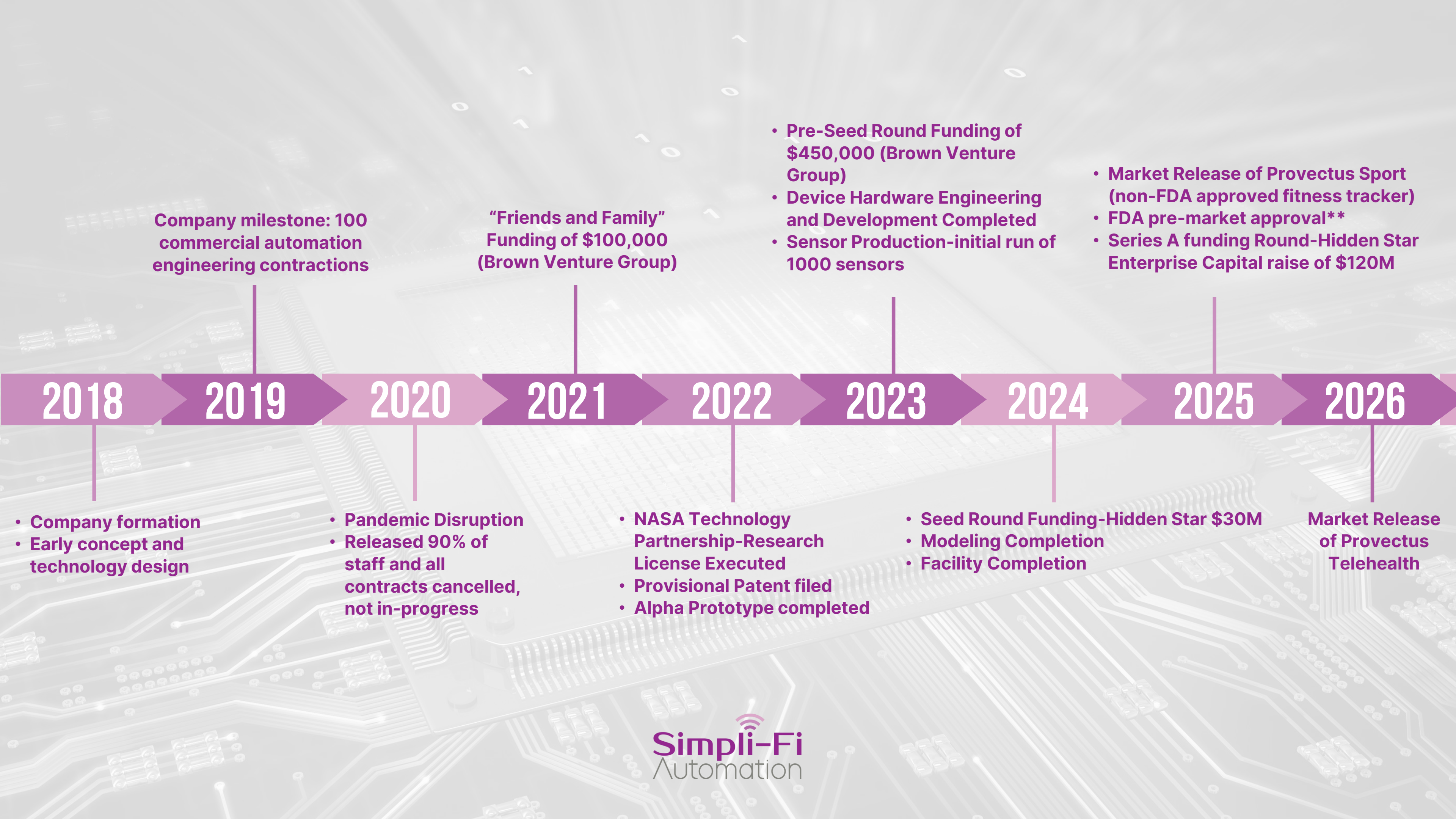
- This growth is anticipated to continue with an annual growth rate of 5.7% (CAGR 2024-2028)

TAM = Total Addressable Market

# Vision

Making healthcare more accessible, affordable, and effective, contributing to a healthier, happier world.





**2018** → **2019** → **2020** → **2021** → **2022** → **2023** → **2024** → **2025** → **2026**

Company milestone: 100 commercial automation engineering contractions

“Friends and Family” Funding of \$100,000 (Brown Venture Group)

- Pre-Seed Round Funding of \$450,000 (Brown Venture Group)
- Device Hardware Engineering and Development Completed
- Sensor Production-initial run of 1000 sensors

- Market Release of Provectus Sport (non-FDA approved fitness tracker)
- FDA pre-market approval\*\*
- Series A funding Round-Hidden Star Enterprise Capital raise of \$120M

- Company formation
- Early concept and technology design

- Pandemic Disruption
- Released 90% of staff and all contracts cancelled, not in-progress

- NASA Technology Partnership-Research License Executed
- Provisional Patent filed
- Alpha Prototype completed

- Seed Round Funding-Hidden Star \$30M
- Modeling Completion
- Facility Completion

Market Release of Provectus Telehealth



# Board of Directors & Affiliations



**Christopher Campbell**



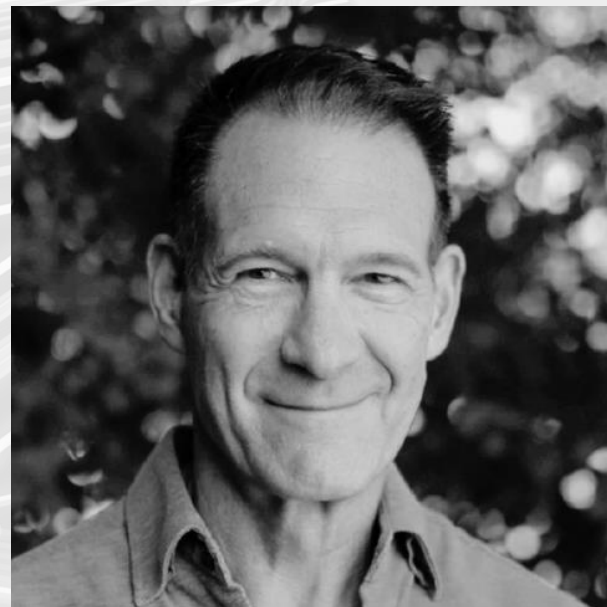
**Johnny Cator**



**Amelia Hardy**



**Michael Wright**



**Alex Ross**



**William (DJ) Dozier**



**Jerome Hamilton**

# PROVECTUS

One Step Closer to the Future of Healthcare

# Thank You!



**chris@simplifiautomation.com**



**<https://simplifiautomation.com/>**



**1-863-289-8774**



**370 Wabasha St. N. Suite 615  
Saint Paul, MN 55102  
United States**



# Simpli-Fi Automation

AI Powered Biomedical Device and Sensor Design