

PROJECT PROFILE

Greystar

PROJECT

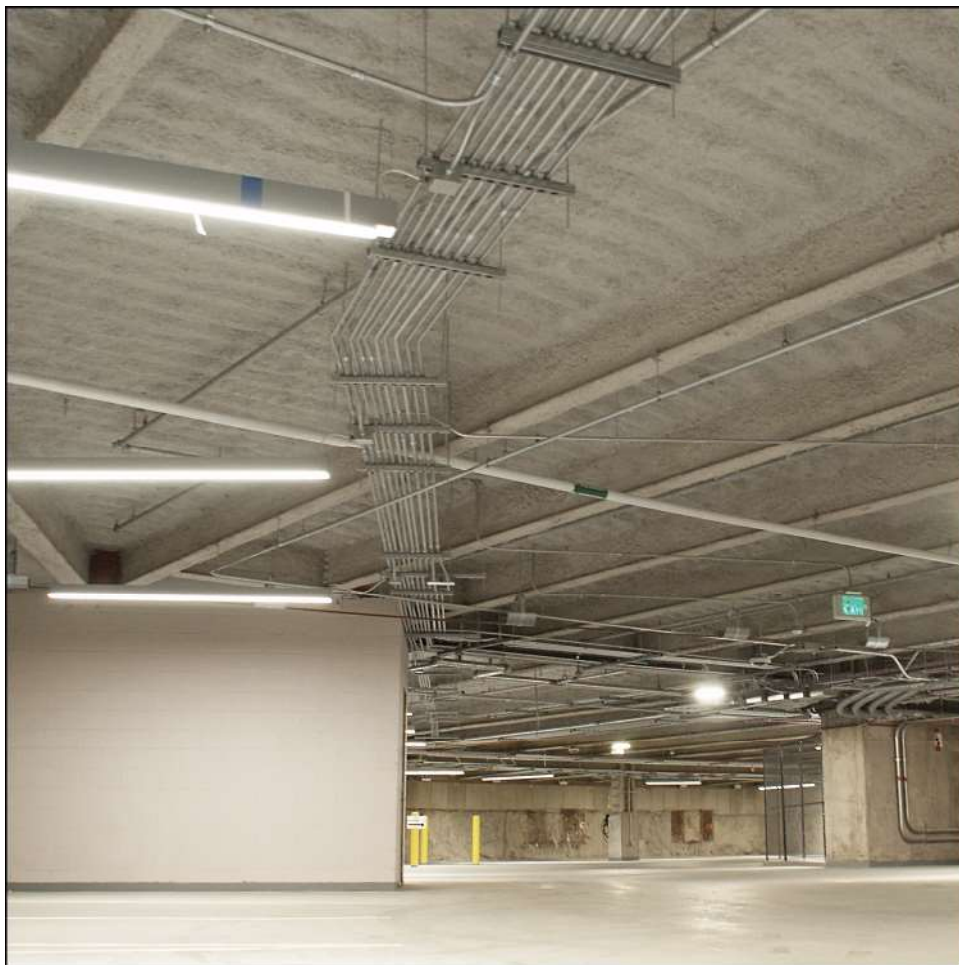
Greystar
74 Middlesex
Somerville, MA

ARCHITECT

Elkus Manfredi
25 Drydock Ave
Boston, MA

DETAILS

K-13 Light Gray
Square Feet
4" Thickness



High tight and clean perfectly describes this application of K-13 at Greystar. Light Gray K-13 was applied in most areas at a 4" thickness providing an R-Value of 14.8, but more importantly, various critical areas received K-13 High Build at 7", R-30. Applied with mechanical fasteners, the application provides a monolithic maintenance free application for long term thermal performance without any additional coatings to comply with fire rating codes. For more information regarding K-13 call 508-678-1118 or visit our web site @ www.atiincorporated.com.

