

880

CROWN & CHASSIS GREASE

- EXCELLENT EXTREME PRESSURE QUALITIES
- WATER RESISTANT
- ADHESIVE AND COHESIVE
- SAFE
- VERSATILE
- STABLE



**TEXAS REFINERY CORP
OF CANADA LIMITED**
TEXAS • ONTARIO • SASKATCHEWAN



Originally developed for the crown of a drilling rig and truck chassis, 880 CROWN & CHASSIS GREASE has proven itself to be the backbone of the Texas Refinery Corp. line of specialty lubricants. The “red grease with golden flakes” is a favorite nationwide . . . from industry to trucking. 880 CROWN & CHASSIS meets and exceeds the demands of a multi-purpose lubricant.

880 CROWN & CHASSIS GREASE Has Excellent Extreme Pressure Qualities

The crown of a drilling rig is expected to support the weight of two to three miles of drill pipe, developing critical lubrication needs at contact areas. 880 CROWN & CHASSIS is especially effective for this type of high pressure application. With a Timken OK Load rating of 100 pounds minimum 880 CROWN & CHASSIS meets special lubrication needs, providing the ultimate in extreme pressure protection. It’s excellent for use on ball joints and fifth wheels, which are constantly placed under heavy loads.



880 CROWN & CHASSIS GREASE Is Water Resistant

880 CROWN & CHASSIS GREASE can be used in places where a standard grade grease washes off. Impervious to water, 880 CROWN & CHASSIS stays put. The special water-resistant qualities of 880 CROWN & CHASSIS keeps surfaces of marine-related equipment well lubricated, avoiding rusting, corroding and seizing.

880 CROWN & CHASSIS GREASE is also an exceptional lubricant for use in the trenching, construction and industry, standing up to even the adverse conditions encountered with water pump bearings.

The special tackiness additives contained in 880 CROWN & CHASSIS GREASE make it a highly practical grease. Its ability to stay put not only reduces grease consumption, but also provides outstanding protection against metal-to-

Listen to what a typical user of 880 CROWN & CHASSIS has to say:

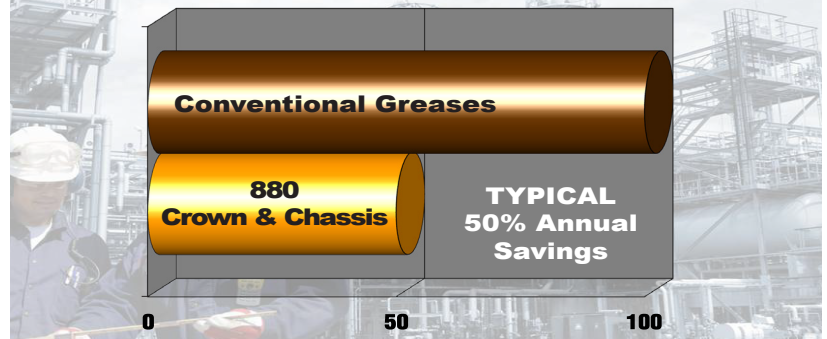
“Prior to switching products we were replacing two sets of bearings every ship, at a cost of \$1,500.00 each. Since we started using the grease we reduced bearing replacements to one set every six months. We average 2 ships a month, if you calculate this out we have saved \$36,000 dollars. This does not even take into consideration the cost of downtime of our vessels.

*Steve Dillon
Terminal Manager*



Annual Plant Costs

(Labor, Parts, Downtime, Grease)



880 CROWN & CHASSIS reduces downtime, reduces grease being consumed and increases equipment longevity and greasing intervals.

metal contact. It clings to metal, sealing out dust, moisture, rust and corrosion. In addition to creating a dust barrier, the adhesive and cohesive qualities of 880 CROWN & CHASSIS GREASE allow it to resist balling up in front of a bearing shaft. These traits also help lubricate the complete shaft and bearing, avoiding dry spots.

880 CROWN & CHASSIS GREASE Is Safe

880 CROWN & CHASSIS GREASE is acceptable for use in enclosed systems in such facilities as federally inspected meat and poultry packing plants. Where you have people and OSHA concerns this is the grease to use.

880 CROWN & CHASSIS GREASE Is Versatile

An essential multi-purpose grease, 880 CROWN & CHASSIS GREASE will safely handle most lubricant needs, whether the surface to be lubricated turns, slides, or has an oscillating motion. It can be used for all types of bearings - ball or roller, high or low speed, sealed or opened.

Adding to its versatility, Texas Refinery Corp. blended Polytetrafluoroethylene (PTFE) into 880 CROWN & CHASSIS GREASE, adding extra protection by providing additional low friction, anti-stick, and non-corrosive characteristics.

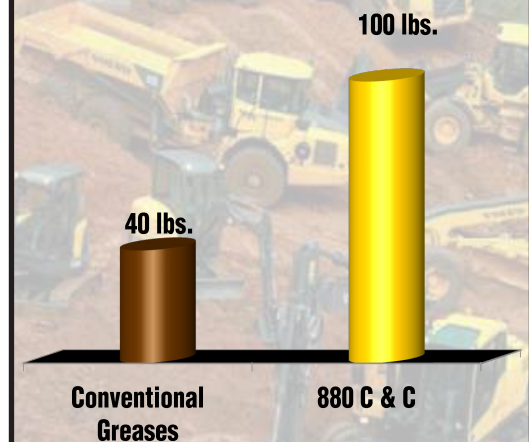
880 CROWN & CHASSIS GREASE is a very versatile grease. It may safely be used for most applications. For consistent operating temperatures of more than 270°F., use PARAGON 3000. 880 CROWN & CHASSIS GREASE is available in four NLGI Grades (weights): #00, #0, #1 and #2.

880 CROWN & CHASSIS GREASE Is Stable

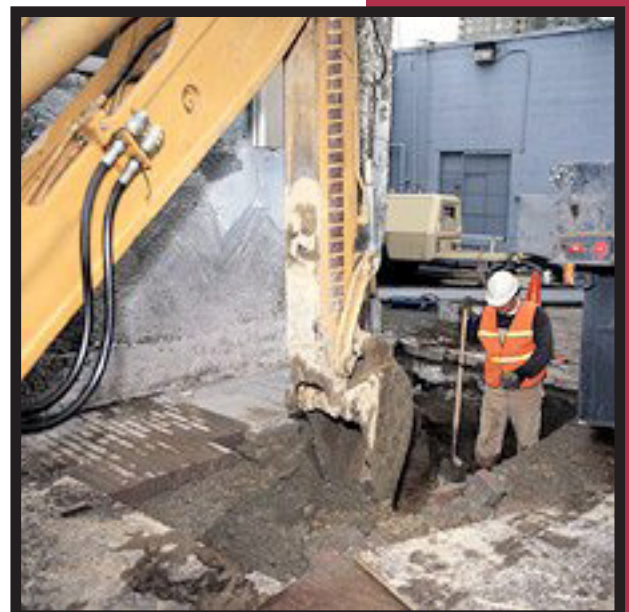
Specially treated to resist oxidation, 880 CROWN & CHASSIS GREASE resists changes in consistency and quality even when stored for long periods of time. It resists separation, has controlled oil bleeding, and under most conditions does not crack, harden or become thin.

Even under the most severe of conditions and even after extended life 880 CROWN & CHASSIS will not thin or thicken. It maintains it's original NGLI rating.

Timken OK Load Rating



The higher the Timken OK Load Rating the greater the protection under severe and extreme loads. Unlike conventional greases 880 CROWN & CHASSIS protects under light and heavy loads.



SPECIFICATIONS

880 CROWN & CHASSIS® GREASE

	No. 2 Grade	No. 1 Grade	No. 0 Grade	No. 00 Grade
NLGI Consistency	No. 2 Grade	No. 1 Grade	No. 0 Grade	No. 00 Grade
Penetration: Worked 60 Strokes Control Range (ASTM D217-52T)	265-295	310-340	355-385	400 - 430
Extreme Pressure by Timken OK Load Passing At	100 Pounds Min.	80 Pounds Min.	80 Pounds Min.	80 Pounds Min.
Color	Red	Red	Red	Red
Texture	Stringy	Stringy	Stringy	Stringy
Water Resistance	Excellent	Excellent	Excellent	Excellent
Water Washout @ 79° C (ASTM D-1264)	1.3%			
Dropping Point, °F.	310 Typical	310 Typical	310 Typical	310 Typical
Combination (ASTM D128-57)				
% Soap	10.0 Maximum	6 - 8	5 - 6	3-5
% Filler	Trace	Trace	Trace	Trace
% Water	None	None	None	None
Stability by Penetration . . . after 60 worked strokes (ASTM D217-52T)	284	326		
Stability by Penetration . . . after 10,000 worked strokes (ASTM D217-52T)	280	321		
Stability by Penetration . . . after 100,000 worked strokes (ASTM D217-52T)	275	317		
Unit Load, PSI	29,000	29,000	29,000	29,000
4 Ball EP Test (ASTM D-2596)	315 kg Weld Point	315 kg Weld Point		
4 Ball Wear Test (ASTM D-2266)	.33 mm Scar Diameter	.33 mm Scar Diameter		
Automotive Wheel Bearing by Leakage Tendencies (ASTM) D1263-52T	Pass No Leakage No Varnish	N/A N/A	N/A N/A	N/A N/A
Consistency at Various Temperatures by Unworked Penetration (ASTM D217-52T)				
@ 0° F.	190-210	240-265	285-310	335-355
@ 77° F.	265-295	310-340	355-385	400-430
@ 100° F.	280-300	335-355	390-410	445-465
Relative Pumpability @ 0° F., Grams	2.7	8.4	12.0	45.0
Oxidation of Grease by Bomb Test (ASTM D942)	Less than 5 PSI pressure drop for 500 hours Excellent	Less than 5 PSI pressure drop for 500 hours Excellent	Less than 5 PSI pressure drop for 500 hours Excellent	Less than 5 PSI pressure drop for 500 hours Excellent
Pumpability in Hand Operated Grease Gun (ASTM D1092)	Slow at -5° F.	Slow at -15° F.	Slow at -20° F.	Slow at -30°F.
Product Code	#8455	#8453	#8452	#8450

Handling Information: For safe handling of the product, read the Safety Data Sheet (SDS).
880 CROWN & CHASSIS® is a registered trademark of Texas Refinery Corp.



CANADA

TEXAS • ONTARIO • SASKATCHEWAN

Phone: 800-827-0711 • www.texasrefinery.ca

PRINTED 10/2015