



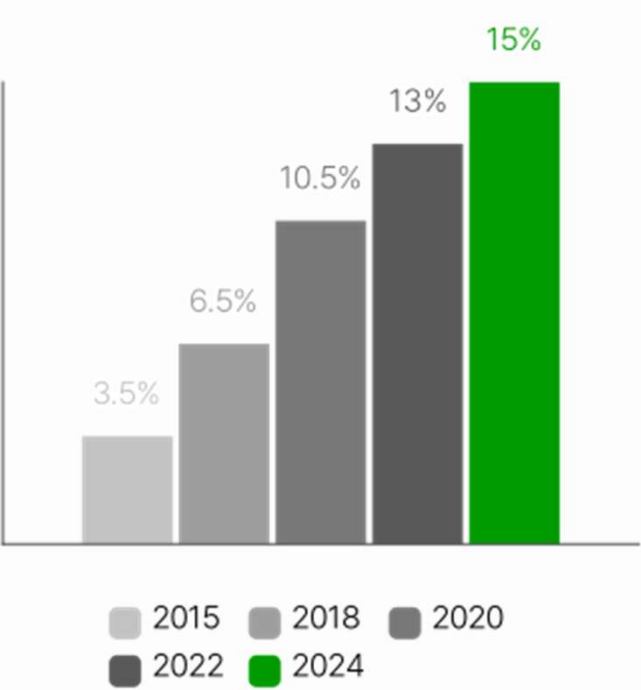
Green HiTech GreenHouse

2025

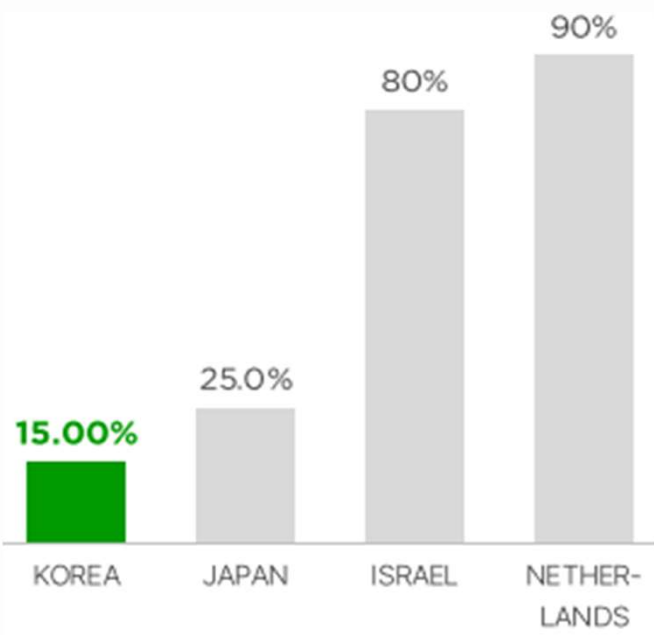
Market Trends In Smart Farming

Data: The Driving Force Behind the Future of Agriculture

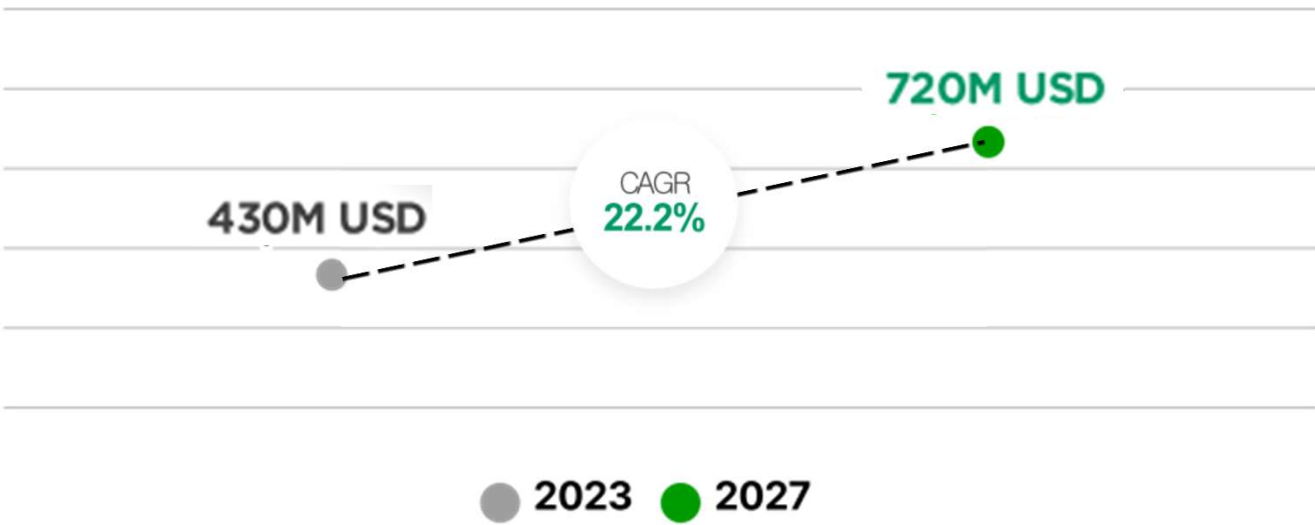
Smart Farm Trends (Korea)



Smart Farm Trends (Oversea)



Growth of Smart Farm (Korea)



Projected to grow at CAGR of 22.2%, ~\$720M USD by 2027

A high-growth future market fueled by strong government support and policy incentives

Partnering with GreenTech: Smarter Farming Starts Here

"1.8x higher yield per unit area – validated by real data"



Extensive Field Experience

Over a decade of experience designing and constructing CE agriculture facilities for key crop segments (e.g. strawberries, leafy greens, cherry tomatoes)



Nationwide Deployment Capability

Broad experience building crop-specific greenhouse systems tailored to regional climates and environment



Smart Farm Control & Dual-Layer Hanging Bed Patents

New technology and product designed for effective integration into the crop cultivation market

Delivering Turnkey Smart Farm Solution

End-to-End service with Expertise, Innovation, and Reliability for High Performance and Profitability

1

Precision Manufacturing

In-House manufacturing essential components including the ICT box secures quality & cost efficiency

2

Construction

Over 10 years of proven expertise specialized in patent dual-layer hanging bed system and high-tech greenhouse

3

Integrated ICT Module

Our proprietary system, DS-Pro, integrates and controls all hardware across the system

4

Analytics

Data-driven cultivation solution tailored to each farm's unique environment

A "Turnkey Solution" isn't just a list of services – It's a fully integrated system designed with deep understanding across every step of facility development. When everything is seamlessly connected, we unlock the prosperity for our client

Green HiTech GreenHouse – 5 Strategic Strength

Our competitive advantage is built on five well-defined, proven strengths



Strategic Consulting

Offers tailored solutions based on automated quote system and strategic analysis to meet each client's unique operational goals.



Nationwide Deployment

Fast, reliable construction and support services across Canada



Proprietary Technology

Backed by patents and continuous R&D, our proprietary technologies—dual-layer hanging beds and smart control systems—offer proven value in modern farming



Industry-Leading Execution

With over 10 years of experience, we deliver fast, flawless greenhouse construction for a wide range of crops.



Cost Efficiency Through In-House Production

Over 20% more cost-effective than competitors through in-house production of key components like ICT control boxes.

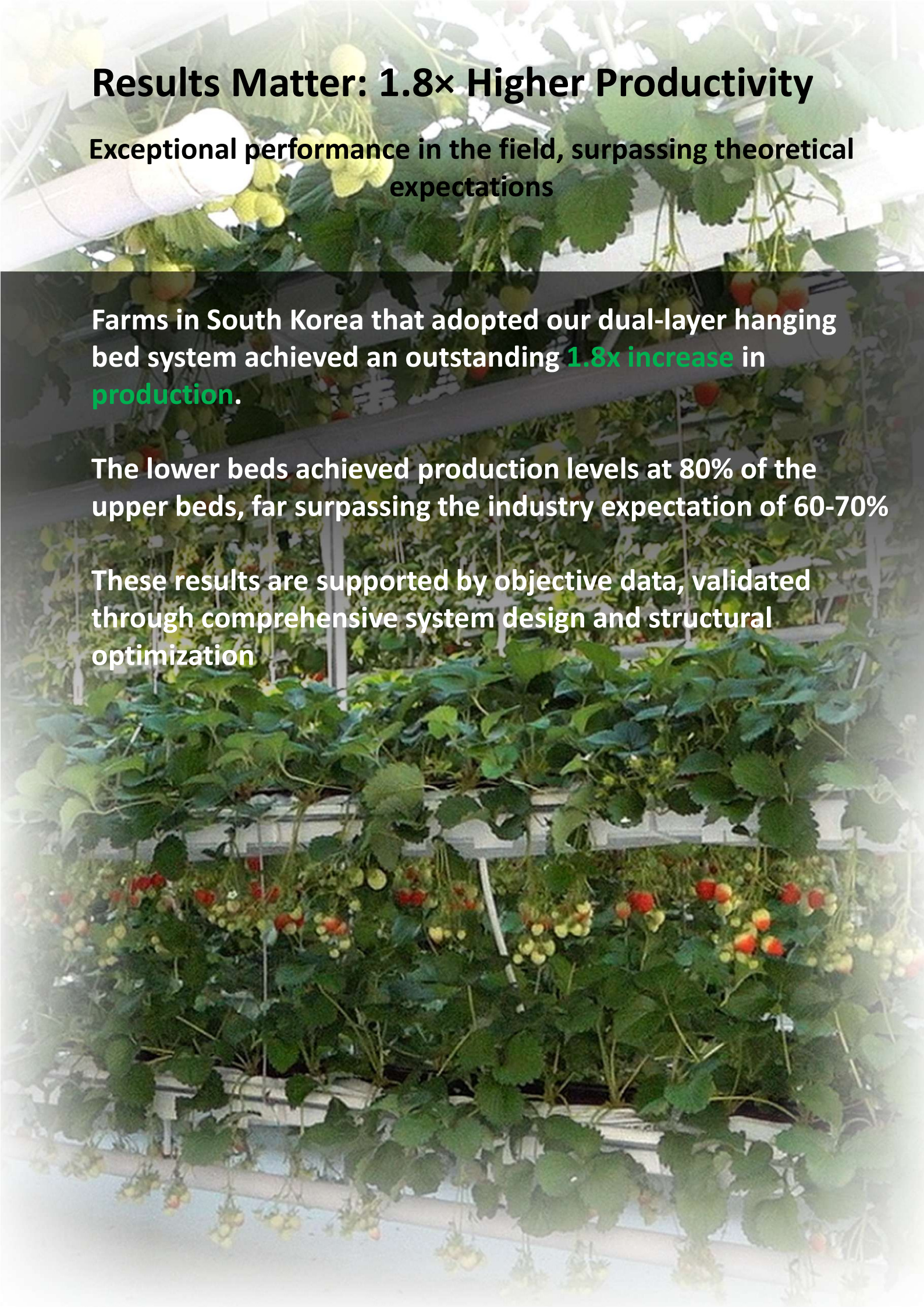
Results Matter: 1.8× Higher Productivity

Exceptional performance in the field, surpassing theoretical expectations

Farms in South Korea that adopted our dual-layer hanging bed system achieved an outstanding **1.8x increase in production.**

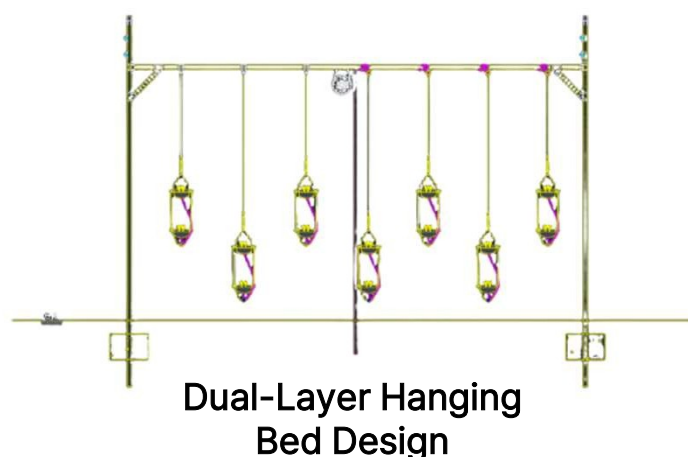
The lower beds achieved production levels at 80% of the upper beds, far surpassing the industry expectation of 60-70%

These results are supported by objective data, validated through comprehensive system design and structural optimization



Innovation – Powering Structural Stability and Efficiency

Our patent technology through R&D proves its value with unparalleled balance and safety in real-world application



Structural Safety: Seesaw Balancing System

Our patent '**Seesaw Balancing System**' uses a **cross-counter balance design** where two bed lines offset each other's weight, reducing motor load by over 90% and preventing sudden drops with an innovative safety mechanism.

Innovative Space Efficiency and Automation

Our **vertical movement system** maximizes greenhouse space, reduces operator fatigue with adjustable height, and enables **smart automation** via sensor and IoT integration

'DS-Pro': The Brain Behind the Hardware

DS-Pro goes beyond displaying collected data — it acts as the 'brain' by analyzing and making decisions autonomously. Every operation follows a scientifically structured three-step process.

01. Data Collection: Detecting and Capturing Everything

- Informed decision start with accurate data. **DS-Pro** gathers all data in real time, including

- Real-time sensor data
- 3D Spatial data
- Crop proximity data
- Weather data

02. **DS-Pro** : Autonomous Analysis and Decision-Making

- DS-Pro analyzes collected data independently to make intelligent, real-time decisions tailored to on-site conditions

- Advanced computational modeling
- Intelligent, multi-layered automation logic
- Historical data analysis
- Digital neural network for adaptive learning

03. Hardware Control: Executes with Precision

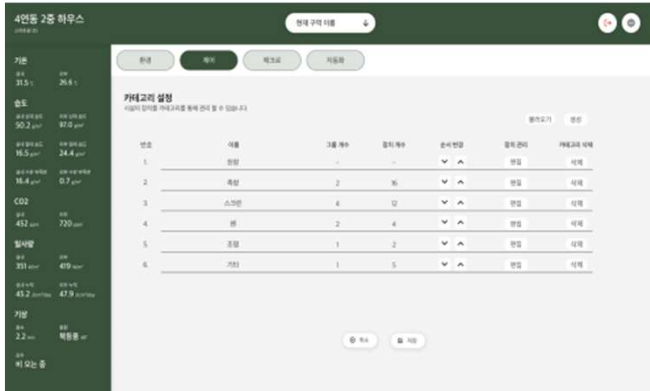
- **DS-Pro** precisely controls all farm actuators and systems to create an optimal, error-free environment through:

- Integrated actuator control
- Environmental system regulation
- Adaptive variable control
- Automated macro execution

'DS-Pro' : 4 Visual Core Functions

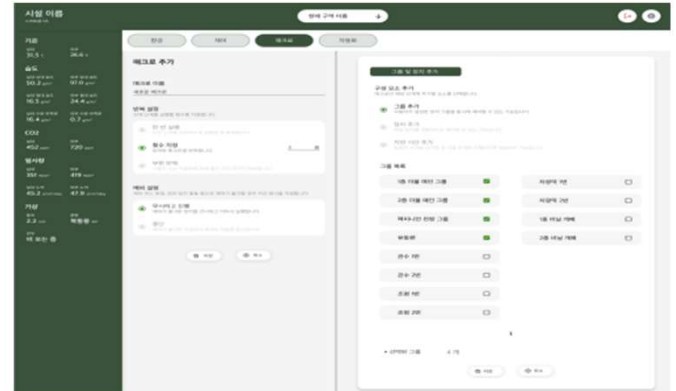
Every function of **DS-Pro** is designed to deliver maximum convenience and professional performance in real-world applications

01. Environment Monitoring



DS-Pro monitors subtle environmental differences between upper and lower beds in real time, eliminating hidden 'blind spots'

02. Integrated Automation



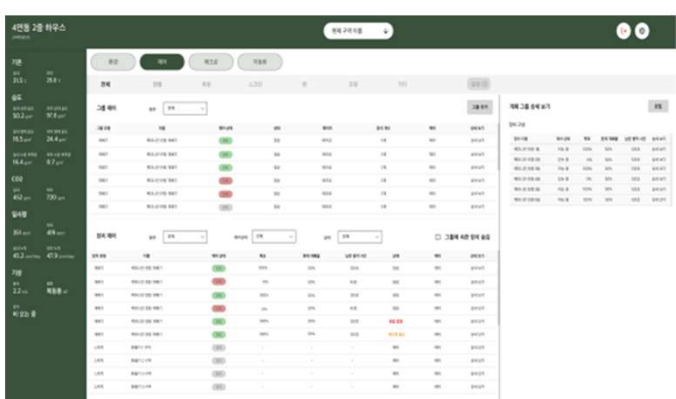
Enables no-code complex control combining environmental data and grower expertise, like raising beds when sunlight exceeds a threshold

03. Data Platform



All environmental and control data are recorded, creating valuable foundations for future AI-driven growth prediction and prescription solutions

04. Operational Stability



Ensures uninterrupted 24/7 operation by supporting full local and manual control even during internet outages

Investment Value & Partnership

Empower Your Agriculture with Innovative Technology

“For the best results and long-term sustainability, the ‘Total Solution’ is not an option –
It’s a **Must-Have**”

While dual-layer hanging beds deliver high productivity on their own, it’s with DS-Pro
that you achieve a truly sustainable, high-profit automated farm

Discover how your farm can transform—schedule a consultation today. Our expert
consultants will recommend solutions tailored to your facility

Innovation in Agriculture , **Green HiTech GreenHouse**

Contact

<https://greenonsil.com>

+82-1544-4934

ccf1224@naver.com