

HEAD START OF ROCKLAND, INC.

ANNUAL REPORT



**A YEAR OF
CONTINUED
GROWTH**

CELEBRATING 60 YEARS OF CONTINUED GROWTH

TABLE OF CONTENTS

	JOINT LETTER FROM THE INTERIM EXECUTIVE DIRECTOR/BOARD PRESIDENT	3
	BOARD/MANAGEMENT STAFF	4
	MISSION/CORE VALUES	5
	PREPARING OUR CHILDREN	6
YEAR IN PHOTOS		9
PARENT INVOLVEMENT/ FAMILY PARTNERSHIPS		13
WE ARE A GREAT PLACE TO WORK		15
RESULTS OF THE FEDERAL REVIEW		16
FINANCIAL STATEMENTS		17
WAYS TO GIVE		19
COLLABORATIONS		20
	EDUCATIONAL PROGRAMS/ ENROLLMENT	8

BECAUSE OF HEAD START WE ARE MOVING AHEAD

Head Start of Rockland, Inc.'s school year theme is "Because of Head Start We Are Moving Forward." Our theme was selected to showcase the impact Head Start has on the children and families we serve in our community. Each year, we ensure that we are improving our services to provide the highest quality of early childhood education to young children and quality support services to families.

Head Start of Rockland, Inc. would not be the quality program it is without the support of our parents and community supporters. We value our continued partnerships with all who make Head Start of Rockland, Inc. a program that allows children and families to flourish. Thank you, and we look forward to many more years of serving the young children and families of Rockland County.



**FRANCES M. RIVERA-
MORGAN, INTERIM
EXECUTIVE DIRECTOR**



**TARA GALES,
PRESIDENT, BOARD OF
DIRECTORS**

BOARD OF DIRECTORS

Tara Gales, President
C. Nicole Matthews, Vice President
Terri Evans, Treasurer
Maria Aybar
Shante George
Natalie Joseph
Courtney Littleford
Tonja Willis

POLICY COUNCIL

Mariane T. Surin, President
Jazmin Vizcaino Acevedo, Vice President
Genesis Santana Diaz
Katherine Garcia
Henriette Blaise Jean
Kerlandja Louis
Yanick Louis
Chana Mandelbaum
Saskia Scott
Ingrid Trejo
T. Unger
B. Zabner

MANAGEMENT STAFF

Frances M. Rivera – Morgan, Interim Executive Director
Joy Lefferts – Fiscal Director
Tina Marie Ciccone, Fiscal Coordinator
Jennifer Gannon, Education/SPED Director
Tenisha Moore, Early Head Start Child Care Partnership Program Specialist
Erskine Grigsby, Family & Community Engagement Director
Mary Duran, Health & Nutrition Director
Kerri Lyn McNamee, Human Resources Director
Kira Davenport, Nyack Director
Tanya Soto, Haverstraw Director
Jessica Wilson, Spring Valley Director



MISSION

To provide high quality early childhood education, health, nutrition and family services to low-income children and families in Rockland County, while being responsive and sensitive to a variety of cultures, traditions and practices. We help children and their families reach their optimal potential.

CORE VALUES

- Establish a supportive learning environment for children, parents and staff.
- Recognize that the members of the Head Start community; represent many cultures Head Start families and staff.
- Understand that the empowerment of families occurs when program governance is a responsibility shared by families, governing bodies and staff.
- Embrace a comprehensive vision of health for children, families and staff to meet basic health needs.
- Respect the importance of all aspects of an individual's development.
- Build a community in which each child and adult is treated as an individual.
- Foster relationships with the larger community
- Develop a continuum of care.
- Embrace a comprehensive vision of health for children, families and staff to meet basic health needs.



PREPARING OUR CHILDREN

Head Start of Rockland, Inc., has established school readiness goals. These goals are defined as “the expectations of children’s status and progress across domains of language and literacy development, cognition and general knowledge, approaches to learning, physical health and wellbeing and motor development, and social and emotional development that will improve readiness for kindergarten goals.” The definition also states the school readiness goals “appropriately reflect the ages of children, birth to five, participating in the program.” Head Start views school readiness as children possessing the skills, knowledge, and attitudes necessary for success in school and for later learning and life.

2024 Medical/Dental



Medical HS 100% EHS 100%	Dental HS 98% EHS 80%
EHS CCP Medical 100% Dental 88%	Delegate Medical 100% Dental 99%

PREPARING OUR CHILDREN



Head Start views school readiness as children possessing the skills, knowledge, and attitudes necessary for success in school and for later learning and life.

SOCIAL/EMOTIONAL DEVELOPMENT

Our children become more independent and confident through activities that teach them self-control, following rules and directions, making friends and group cooperation. In most cases, Head Start children can independently use the bathroom, put their coats on and take them off, eat with silverware unassisted and put their toys away – necessary skills for school.

COGNITIVE DEVELOPMENT

. Through activities such as sorting, classifying, comparing, counting and making patterns, Head Start children develop cognitive thinking skills that enable them to solve problems and think logically. They also stimulate their creativity by working with crayons, paint, Playdough and other materials.

PHYSICAL DEVELOPMENT

Head Start children participate in numerous physical activities such as balancing, running, jumping, throwing and catching. They also learn motor skills to help develop into children who can button coats, cut and write.

LANGUAGE DEVELOPMENT

. Head Start children are encouraged to listen to and participate in conversations. Ongoing exposure to books helps them recognize letters and words and begin writing.

EDUCATIONAL PROGRAMS & ENROLLMENT

Number of children and families (2023 - 2024)		Average monthly enrollment	
Head Start	852 children *	HS	99%
Early Head Start	82 children	EHS	100%
EHS Child Care Partnership	112 children	EHSCCP	100%

Head Start & Early Head Start: Center-based, federally funded programs providing preschool education, nutrition, health and family services for children ages birth to five years.

Pre-School Special Education: New York State-approved special education services (evaluation and assessment, therapy and integrated classroom programming) for preschool children.

Early Head Start Child Care Partnership (EHSCCP): Collaboration with several child care programs to provide Early Head Start services to 112 children.

Parent Groups: Advocacy forum for parents, providing an opportunity for empowerment, governance and parenting education.

Early Head Start Home Base: An integrated home setting program serving low-income families with children from birth to 3 years old, or a woman who is pregnant.

Universal Pre-Kindergarten: Pre-kindergarten education in collaboration with Clarkstown, East Ramapo, North Rockland and Nyack school districts within Rockland County.

Adult Literacy: English as a Second Language (ESL) classes for beginning and intermediate students.



A YEAR OF CONTINUED GROWTH



A YEAR OF CONTINUED GROWTH



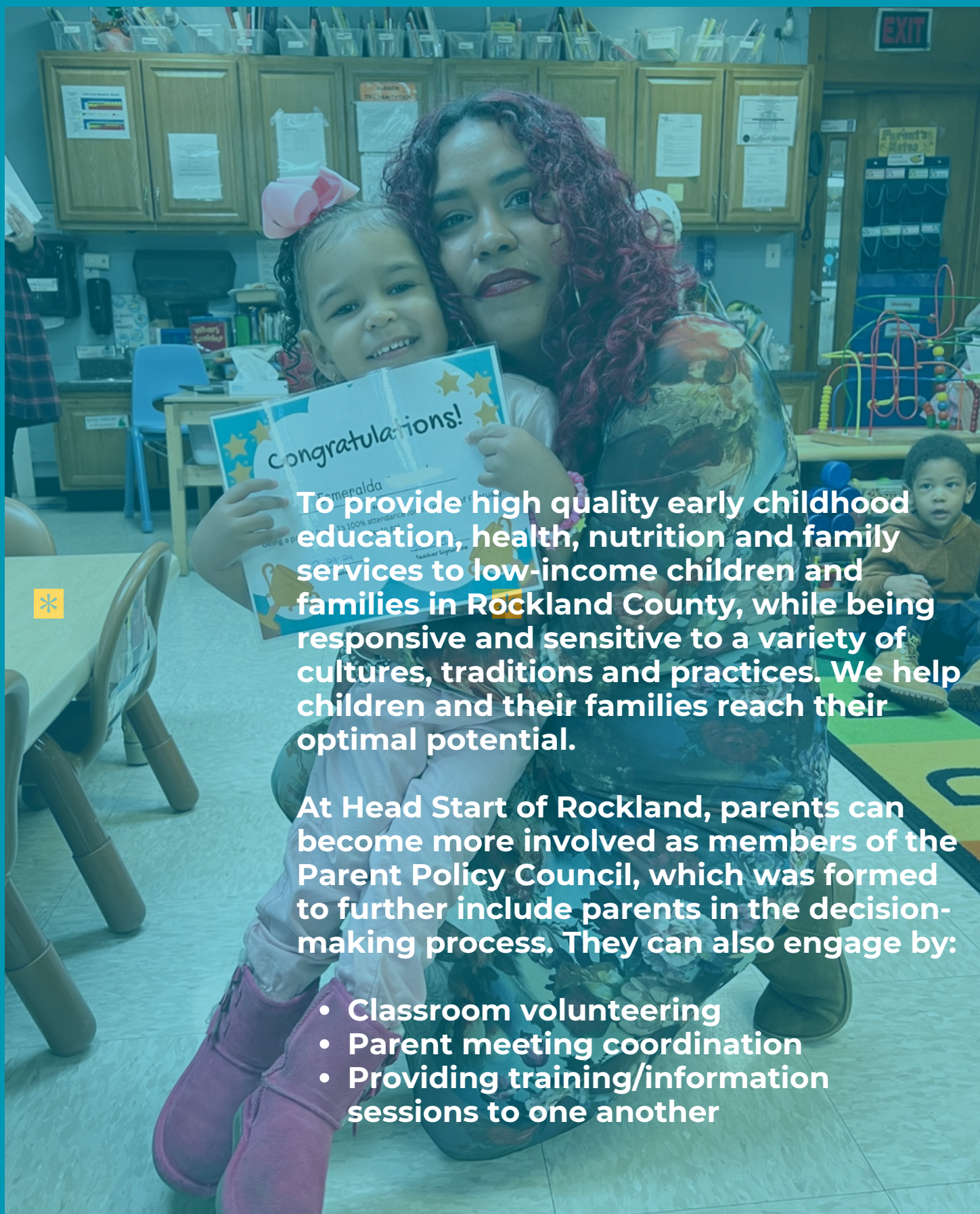
PARENTS AS PARTNERS



OUR CHILDREN LOVE LEARNING



PARENT INVOLVEMENT/FAMILY PARTNERSHIPS



To provide high quality early childhood education, health, nutrition and family services to low-income children and families in Rockland County, while being responsive and sensitive to a variety of cultures, traditions and practices. We help children and their families reach their optimal potential.

At Head Start of Rockland, parents can become more involved as members of the Parent Policy Council, which was formed to further include parents in the decision-making process. They can also engage by:

- Classroom volunteering
- Parent meeting coordination
- Providing training/information sessions to one another

PARENT INVOLVEMENT/FAMILY PARTNERSHIPS

2023 - 2024 Program Year	EHS	HS	EHS-CCP	Total
Homeless Families who acquired Housing	5	60	1	66
Homeless Families	0	18	0	18
Housing Assistance	4	31	7	42
Received Adult Education Services	2	54	1	57
Received ESL Services	30	123	2	155
Received Parent Education Services	55	202	2	259
Job Training	26	286	53	365
Health Education	66	777	37	880
Asset building services	15	69	12	96
Received Emergency /Crisis Intervention	66	394	9	469
# of Children Served	96	895	132	1123
In Foster Care	2	6	2	10
Military/Veteran	0	9	0	9

WE ARE A GREAT PLACE TO WORK

Our staff provides quality and excellent services. The majority work directly with children and families enrolled at our Head Start and Early Head Start centers. Management staff and support staff work at our administrative office in Haverstraw. We Support Quality Teachers Research shows that the more educated and skilled the teacher, the better the quality of services to children. We help our teachers improve their qualifications and we provide financial support for them to attend classes leading to associate and baccalaureate degrees in early childhood education. Federal law mandates require all Head Start teachers to have a minimum of an associate level degree, and all Early Head Start teachers must have a Child Development Associate Credential.



Head Start Staff Direct Run & West Street CCLC

37 Teachers:
 17 Masters
 16 Bachelors
 3 AA
 1 CDA
 **4 Enrolled in MS
 ** 1 Enrolled in AA
 55 TA's
 2 Masters
 5 Bachelors
 6 AA
 16 CDA
 11 Department of Labor Credential
 15 HS
 **1 Enrolled in BS
 ** 5 Enrolled in AA
 **11 Enrolled in CDA

Delegates

16 Teachers
 3 Bachelors
 12 AA
 1 HS Diploma
 **1 Enrolled in AA
 32
 32 TAs
 8 CDA
 12 HS
 12 Dept. of Labor Credential
 **5 Enrolled in CDA

Early Head Start Staff Direct Run and West Street

10 Toddler Teachers
 1 Bachelors
 2 AA
 5 CDA
 2 Department of Labor Credential
 *2 Enrolled in CDA
 4 EHS Home Based
 2 Bachelors
 1 AA
 1 CDA

Early Head Start Staff – Child Care Partners

6 Providers
 1 BS
 1 AA
 4 CDA
 31 Teachers
 1 Bachelors
 1 AA
 12 CDA
 16 HS
 1 Department of Labor Credential
 **14 Enrolled in CDA

Haverstraw Day Care

2 Teachers
 1 AA
 1 CDA
 3 TAs
 2 CDA
 1HS
 *1 enrolled in AA

RESULTS OF THE FEDERAL REVIEW

From May 19, 2023 to May 25, 2023, the Administration for Children and Families (ACF) conducted a Focus Area Two (FA2) monitoring review of Head Start of Rockland, Inc. Head Start and Early Head Start Programs.

The Office of Head Start (OHS) would like to thank the governing body, policy council, parents, and staff for their engagement in the review process.

Based on the information gathered through this review, it has been determined that Head Start of Rockland, Inc. meets all the requirements of all applicable HSPPS, laws, regulations, and policy requirements!



2024 STATEMENT OF FINANCIAL POSITION

ASSETS		
CASH AND CASH EQUIVALENTS	\$	357,699
ACCOUNTS RECEIVABLE		1,517,936
TOTAL CURRENT ASSETS		1,875,635
PROPERTY AND EQUIPMENT, NET		5,937,284
TOTAL ASSETS	\$	7,812,919
LIABILITIES AND NET ASSETS		
ACCOUNTS PAYABLE AND ACCRUED EXPENSES	\$	949,826
LINE OF CREDIT		334,000
CURRENT PORTION OF NOTES PAYABLE		
DEFERRED REVENUE		90,000
		112,864
TOTAL CURRENT LIABILITIES		1,486,690
NOTES PAYABLE, LONG TERM		90,000
TOTAL LIABILITIES	\$	1,576,690
NET ASSETS		
WITHOUT DONOR RESTRICTIONS	\$	416,670
BUILDING AND EQUIPMENT		5,757,284
WITHOUT DONOR RESTRICTIONS		6,173,954
WITH DONOR RESTRICTIONS		62,275
TOTAL NET ASSETS		6,236,229
TOTAL LIABILITIES AND NET ASSETS	\$	7,812,919

2024 STATEMENT OF FINANCIAL POSITION

	WITHOUT DONOR RESTRICTIONS	WITH DONOR RESTRICTIONS	TOTAL
SUPPORT AND REVENUE			
CONTRIBUTIONS AND OTHER INCOME	\$ 14,188	\$ 22,082	\$ 36,270
DONATED SUPPLIES AND SERVICES	1,137,223	---	1,137,223
TOTAL SUPPORT REVENUES	1,151,411	22,082	1,173,493
OPERATING REVENUE			
FEDERAL GRANTS- HEAD START	12,114,078	---	12,114,078
FEDERAL GRANTS- HEAD CACFP	562,874	---	562,874
FEDERAL GRANTS - FOSTER GRANDPARENTS PROGRAM	380,239	---	380,239
PROGRAM SERVICE FEES	2,125,989	---	3,125,989
STATE AND COUNTY GRANTS	953,031	---	953,031
MISCELLANEOUS INCOME	442	---	442
NET ASSETS RELEASED FROM RESTRICTIONS	---	---	---
TOTAL OPERATING REVENUE	17,136,653	---	17,136,653
TOTAL REVENUE	18,288,064	22,082	18,310,146
EXPENSES			
PROGRAM SERVICES	16,289,021	---	16,289,021
SUPPORTING SERVICES			
GENERAL AND ADMINISTRATIVE	4,141,072	---	4,141,072
FUNDRAISING	---	---	---
TOTAL EXPENSES	18,381,860	---	18,381,860
CHANGE IN NET ASSETS	(93,796)	22,082	(71,714)
NET ASSETS, BEGINNING	6,867,750	40,193	6,307,943
NET ASSETS, ENDING	6,173,954	62,275	6,236,229

WAYS TO GIVE



By making a charitable contribution to Head Start of Rockland, you are making an investment in the long-term education, health and well-being of low income children and their families living in Rockland County. Your gift will help us sustain and ensure the academic, social and lifetime success of these children. To make a donation or for more information, contact our office at (845) 429-4122 or visit: www.headstartofrockland.org.

THANK YOU!



Collaborations

Beyond the Walls Outreach Ministry
Beyond the Walls Outreach
Chaveriem of Rockland
Child Care Resources of Rockland, Inc.
Center for Safety and Change
Chiku Awali
Clarkstown Public Schools
Community Outreach Center
Cornell Cooperative Extension
D.A.R.E.
Dominican College
Dr. Bina Bhatia, DDS
East Ramapo Central School District
Eat Smart New York
Fairmount Baptist Church
Fidelis Care
Finkelstein Library
Food Bank of Hudson Valley
Fordham University
Haverstraw Collaborative
Haverstraw Day Care
Haverstraw Kings Daughters Public Library
HealthFirst
Healthy Smiles Kids in Action, NY
Hudson River Health Care Inc.
Kinderhouse
Long Island University
Meals on Wheels of Rockland
Mercy College
Montclair College
New Square Community Improvement Council
New York University
North Rockland Central School District

Nyack Center
Nyack Collaborative
Nyack Homeless Project
Nyack Library
Nyack Public Schools
One to One Learning
Project SHTEIG
Refuah
Regional Food Bank of NENY
Rockland Community College
Rockland County Department of Aging
Rockland County Department of Health
Rockland County Department of Social Services
Rockland County Youth Bureau
Rockland Works Career Center
SHARE 24/7
South Orangetown Public Schools
Spring Valley Collaborative
Spring Valley Police Department
St. Thomas Aquinas College
TD Charitable Foundation
Teacher Guly
Teacher Mommy
Toys for Tots
Town of Haverstraw
Town of Ramapo
United Way 211 Rockland County
Village of Haverstraw
Village of Nyack
Viznitz Pre-School
West Cop - Rockland County
West St. Child Care Learning Center
Youthfest
21C

**ASSISTANCE IS AVAILABLE IN ENGLISH, SPANISH, HAITIAN CREOLE, FRENCH AND YIDDISH
ADMINISTRATIVE OFFICES**

HEAD START OF ROCKLAND, INC.

117 ROUTE 9W

HAVERSTRAW, NEW YORK 10927-1404

TEL: 845-429-4122

FAX: 845-429-4133

EMAIL: INFO@HEADSTARTOFROCKLAND.ORG

WEBSITE: WWW.HEADSTARTOFROCKLAND.ORG