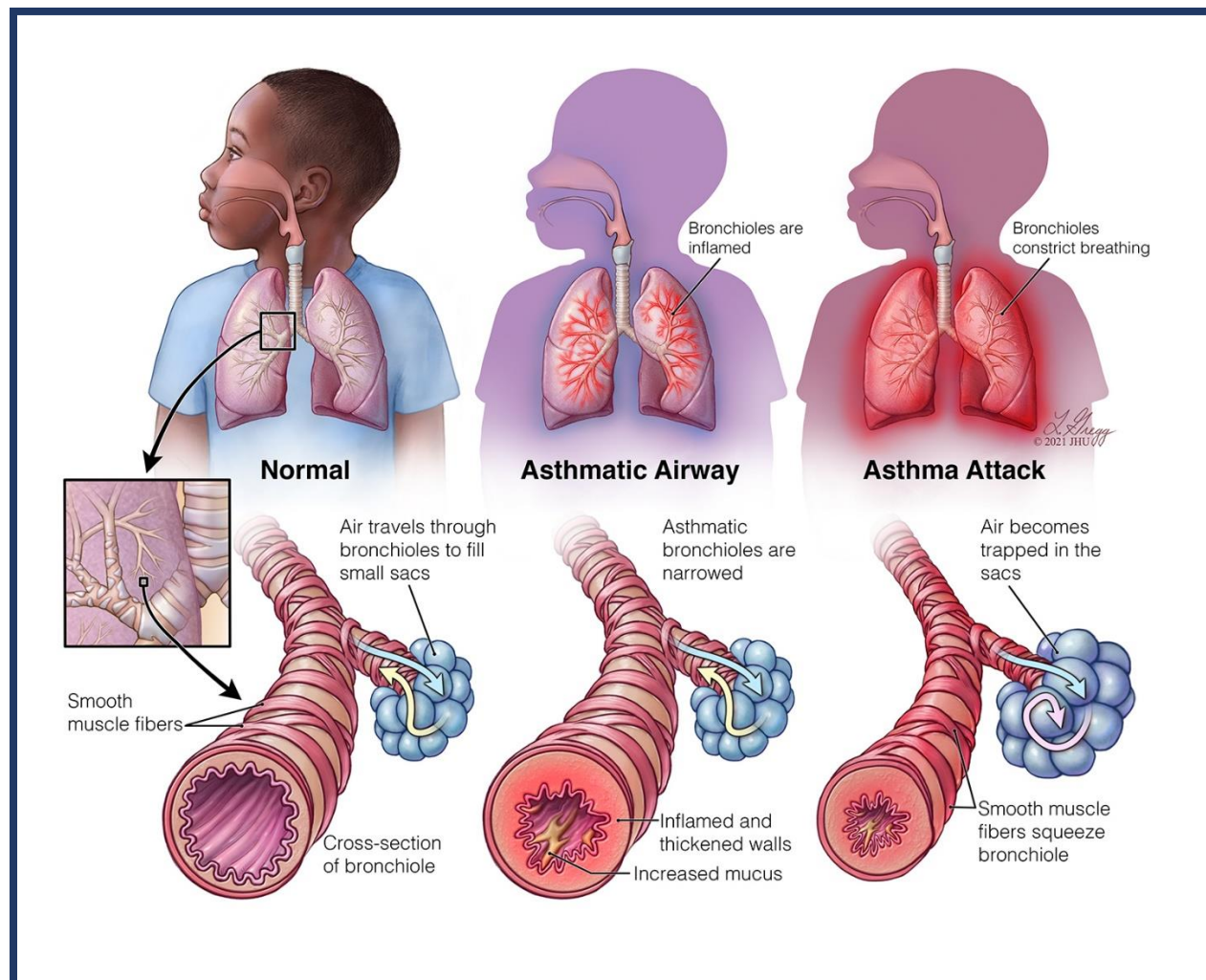


Understanding Asthma in the Body

Asthma is a chronic condition, which means that it is life-long and cannot be cured, but it can be managed. Here is a closer look inside the lungs to see how asthma affects the body.



In the first image, you can see what the small airways, or **bronchioles** (brawn-key-oles), look like normally. The middle image shows the bronchiole of a child with asthma. And the image on the right shows what happens when a child starts to have an **exacerbation** (ex-as-er-bay-shun), or asthma attack. The muscles around the airways tighten and squeeze the openings, making it hard to breathe. This is called **constriction** (con-strick-shun). Scan the code to watch a video that will show you what it looks like inside the body.

