



# CannaBusiness Laboratories, LLC

2554 Palumbo Dr. Lexington, KY 40509

## Certificate of Analysis

**Customer:**

Atalo Holdings  
5855 Rockwell Rd  
Winchester, KY 40391

Collected Date:

Received Date: **5/5/2020**

COA Released: **6/4/2020**

Comments:

Sample ID: **200504010**

Order Number: **CB200504001**

Sample Name: **25 mg/mL CBD in OHSO**

External Sample ID:

Batch Number: **2012411.25**

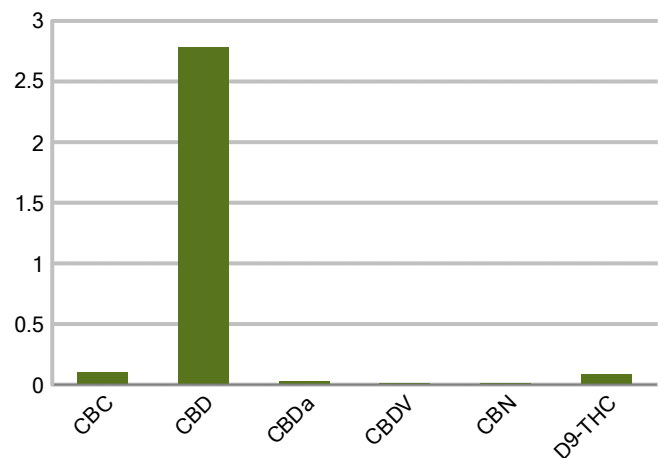
Product Type: **Concentrate**

Sample Type: **Tincture**

## CANNABINOID PROFILE

Analyte	LOQ (%)	% weight	(mg/g)
CBC	0.01	0.103	1.015
CBD	0.01	2.783	27.56
CBDa	0.01	0.031	0.305
CBDV	0.01	0.017	0.516
CBG	0.01	ND	ND
CBGa	0.01	ND	ND
CBN	0.01	0.012	0.243
d8-THC	0.01	ND	ND
d9-THC	0.01	0.091	0.898
THCa	0.01	ND	ND
<b>Total Cannabinoids</b>		<b>3.036</b>	<b>30.36</b>
<b>Total Potential THC</b>		<b>0.091</b>	<b>0.907</b>
<b>Total Potential CBD</b>		<b>2.810</b>	<b>28.10</b>
<b>Total Potential CBG</b>		<b>0.000</b>	<b>0.000</b>

Cannabinoids (% weight)



**Ratio of Total Potential CBD to Total Potential THC 30.88 : 1**

**Ratio of Total Potential CBG to Total Potential THC 0.00 : 1**

*\*Total Cannabinoids refers to the sum of all cannabinoids detected.*

*\*Total Potential CBD = (0.877 x CBDa) + CBD. \*Total Potential THC = (0.877 x THCa) + THC. \*Total Potential CBG = (0.877 x CBGa) + CBG.*

*\*Total Potential THC/CBD are calculated to take into account the loss of an acid group during decarboxylation.*

Authorized Signature

Laboratory Manager

Jamie Hobgood

06/04/2020 11:26 AM

DATE

This product has been tested by CannaBusiness Laboratories using validated testing methodologies and a quality system. Values reported relate only to the product tested. CannaBusiness Laboratories makes no claims as to the efficacy, safety, or other risks associated with any detected or non-detected levels of any compounds reported herein. This Certificate shall be reproduced except in full, without the written permission of CannaBusiness Laboratories. Uncertainty information is available on request. Photo is of sample received by the lab and may vary from final packaging. The results apply to the sample as received.



# CannaBusiness Laboratories, LLC

2554 Palumbo Dr. Lexington, KY 40509



Sample ID: 200504010  
Sample Name: 25 mg/mL CBD in OHSO  
Sample Type: Tincture

## Certificate of Analysis

### Customer

Atalo Holdings  
5855 Rockwell Rd  
Winchester, KY 40391

### Overall Batch Results

Pesticide N/A	Moisture Content N/A
Potency PASS	Water Activity N/A
Mycotoxins N/A	Heavy Metals N/A
Microbial Screen N/A	Residual Solvents N/A
Terpenoids N/A	

Sample Name: 25 mg/mL CBD in OHSO

Sample ID: 200504010

Product Type: Concentrate

Sample Type: Tincture

Collected Date:

Received Date: 05/05/2020

Batch Number:

Batch Size:

Sample Size:

COA released:

### Potency

Date Tested: 05/06/2020

Method:

Instrument:

<b>0.091 %</b> Total THC	<b>2.810 %</b> Total CBD	<b>3.036 %</b> Total Cannabinoids	<b>NT</b> Total Cannabinoids
-----------------------------	-----------------------------	--------------------------------------	---------------------------------

Analyte	Result	Units	LOQ	Result	Units
CBC (Cannabichromene)	0.103	%	0.010	1.015	mg/mL
CBD (Cannabidiol)	2.783	%	0.010	27.56	mg/mL
CBDa (Cannabidiolic Acid)	0.031	%	0.010	0.305	mg/mL
CBDV (Cannabidivarin)	0.017	%	0.010	0.516	mg/mL
CBG (Cannabigerol)	ND	%	0.010	ND	mg/mL
CBGa (Cannabigerolic Acid)	ND	%	0.010	ND	mg/mL
CBN (Cannabinol)	0.012	%	0.010	0.243	mg/mL
D8-THC (D8-Tetrahydrocannabinol)	ND	%	0.010	ND	mg/mL
D9-THC (D9-Tetrahydrocannabinol)	0.091	%	0.010	0.898	mg/mL
THCa (Tetrahydrocannabinolic Acid)	ND	%	0.010	ND	mg/mL

### Authorized Signature

Laboratory Manager

Jamie Hobgood

06/04/2020 11:26 AM

Date Time

NT = Not tested, ND = Not detected; LOQ = Limit of Quantitation; <LOQ = Detected; >ULOL = Above upper limit of linearity; CFU/g = Colony forming units per 1 gram; TNTC = Too numerous to count

CannaBusiness Laboratories  
License # P-0059: (859)-514- 6999 <https://www.cannabusinesslabs.us>

This product has been tested by CannaBusiness Laboratories using validated testing methodologies and a quality system. Values reported relate only to the product tested. CannaBusiness Laboratories makes no claims as to the efficacy, safety, or other risks associated with any detected or non-detected levels of any compounds reported herein. This Certificate shall not be reproduced except in full, without the written permission of CannaBusiness Laboratories. Uncertainty information is available on request. Photo is of sample received by the lab and may vary from final packaging.