



CannaBusiness Laboratories, LLC

2554 Palumbo Dr. Lexington, KY 40509

Certificate of Analysis

Customer:

Atalo Holdings
5855 Rockwell Rd
Winchester, KY 40391

Collected Date:

Received Date: **6/30/2020**

COA Released: **7/1/2020**

Comments:

Sample ID: **200630004**

Order Number: **CB200630002**

Sample Name: **25 mg/ml CBD in OHSO**

External Sample ID:

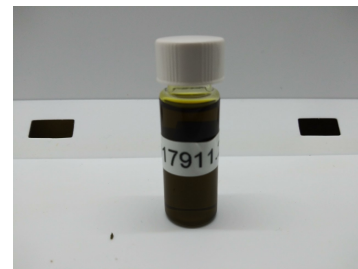
Batch Number: **2017911.25**

Product Type: **Concentrate**

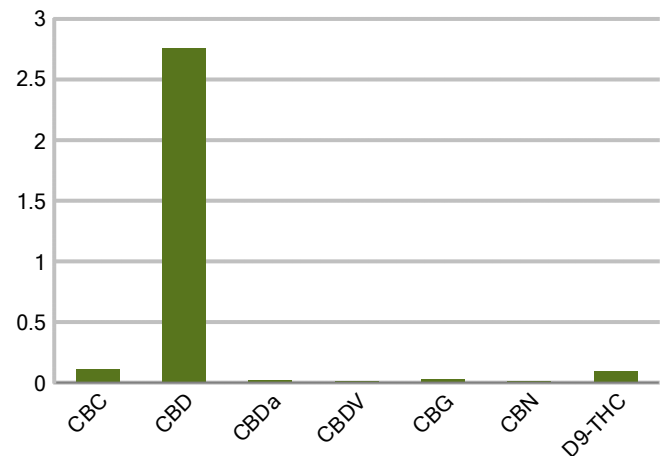
Sample Type: **Concentrate**

CANNABINOID PROFILE

Analyte	LOQ (%)	% weight	mg/g
CBC	0.01	0.113	1.127
CBD	0.01	2.756	27.56
CBDa	0.01	0.019	0.190
CBDV	0.01	0.017	0.167
CBG	0.01	0.031	0.308
CBGa	0.01	ND	ND
CBN	0.01	0.011	0.106
d8-THC	0.01	ND	ND
d9-THC	0.01	0.094	0.942
THCa	0.01	ND	ND
Total Cannabinoids		3.040	30.40
Total Potential THC		0.094	0.942
Total Potential CBD		2.772	27.72
Total Potential CBG		0.031	0.308



Cannabinoids (% weight)



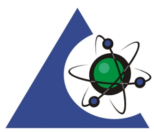
Ratio of Total Potential CBD to Total Potential THC 29.49 : 1

Ratio of Total Potential CBG to Total Potential THC 0.33 : 1

**Total Cannabinoids refers to the sum of all cannabinoids detected.*

**Total Potential CBD = (0.877 x CBDa) + CBD. *Total Potential THC = (0.877 x THCa) + THC. *Total Potential CBG = (0.877 x CBGa) + CBG.*

**Total Potential THC/CBD are calculated to take into account the loss of an acid group during decarboxylation.*



Accreditation #109588

Authorized Signature

J. Hobgood
Laboratory Manager

Jamie Hobgood

07/01/2020 9:56 AM

DATE

This product has been tested by CannaBusiness Laboratories using validated testing methodologies and a quality system. Values reported relate only to the product tested. CannaBusiness Laboratories makes no claims as to the efficacy, safety, or other risks associated with any detected or non-detected levels of any compounds reported herein. This Certificate shall be reproduced except in full, without the written permission of CannaBusiness Laboratories. Uncertainty information is available on request. Photo is of sample received by the lab and may vary from final packaging. The results apply to the sample as received. ISO/IEC 17025:2017 Accredited.



CannaBusiness Laboratories, LLC

2554 Palumbo Dr. Lexington, KY 40509

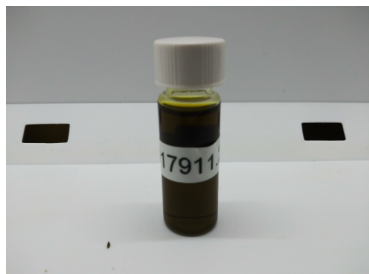


Sample ID: 200630004
Sample Name: 25 mg/ml CBD in OHSO
Sample Type: Concentrate

Certificate of Analysis

Customer

Atalo Holdings
5855 Rockwell Rd
Winchester, KY 40391



Overall Batch Results

Pesticide N/A	Moisture Content N/A
Potency PASS	Water Activity N/A
Mycotoxins N/A	Heavy Metals N/A
Microbial Screen N/A	Residual Solvents N/A
Terpenoids N/A	

Sample Name: 25 mg/ml CBD in OHSO

Sample ID: 200630004

Product Type: Concentrate

Sample Type: Concentrate

Collected Date:

Received Date: 06/30/2020

Batch Number:

Batch Size:

Sample Size:

COA released:

Potency (mg/g)

Date Tested: 06/30/2020

Method:

Instrument:

0.094 % Total THC	2.772 % Total CBD	3.040 % Total Cannabinoids	30.40 mg/g Total Cannabinoids
-----------------------------	-----------------------------	--------------------------------------	---

Analyte	Result	Units	LOQ	Result	Units
CBC (Cannabichromene)	0.113	%	0.010	1.127	mg/g
CBD (Cannabidiol)	2.756	%	0.010	27.56	mg/g
CBDa (Cannabidiolic Acid)	0.019	%	0.010	0.190	mg/g
CBDV (Cannabidivarin)	0.017	%	0.010	0.167	mg/g
CBG (Cannabigerol)	0.031	%	0.010	0.308	mg/g
CBGa (Cannabigerolic Acid)	ND	%	0.010	ND	mg/g
CBN (Cannabinol)	0.011	%	0.010	0.106	mg/g
D8-THC (D8-Tetrahydrocannabinol)	ND	%	0.010	ND	mg/g
D9-THC (D9-Tetrahydrocannabinol)	0.094	%	0.010	0.942	mg/g
THCa (Tetrahydrocannabinolic Acid)	ND	%	0.010	ND	mg/g



Authorized Signature

[Signature]
Laboratory Manager

Jamie Hobgood

07/01/2020 9:56 AM

Date Time

NT = Not tested, ND = Not detected; LOQ = Limit of Quantitation; <LOQ = Detected; >ULOL = Above upper limit of linearity; CFU/g = Colony forming units per 1 gram; TNTC = Too numerous to count

CannaBusiness Laboratories
License # P-0059: (859)-514- 6999 <https://www.cannabusinesslabs.us>

This product has been tested by CannaBusiness Laboratories using validated testing methodologies and a quality system. Values reported relate only to the product tested. CannaBusiness Laboratories makes no claims as to the efficacy, safety, or other risks associated with any detected or non-detected levels of any compounds reported herein. This Certificate shall not be reproduced except in full, without the written permission of CannaBusiness Laboratories. Uncertainty information is available on request. Photo is of sample received by the lab and may vary from final packaging. The results apply to the sample as received. ISO/IEC 17025:2017 Accredited.