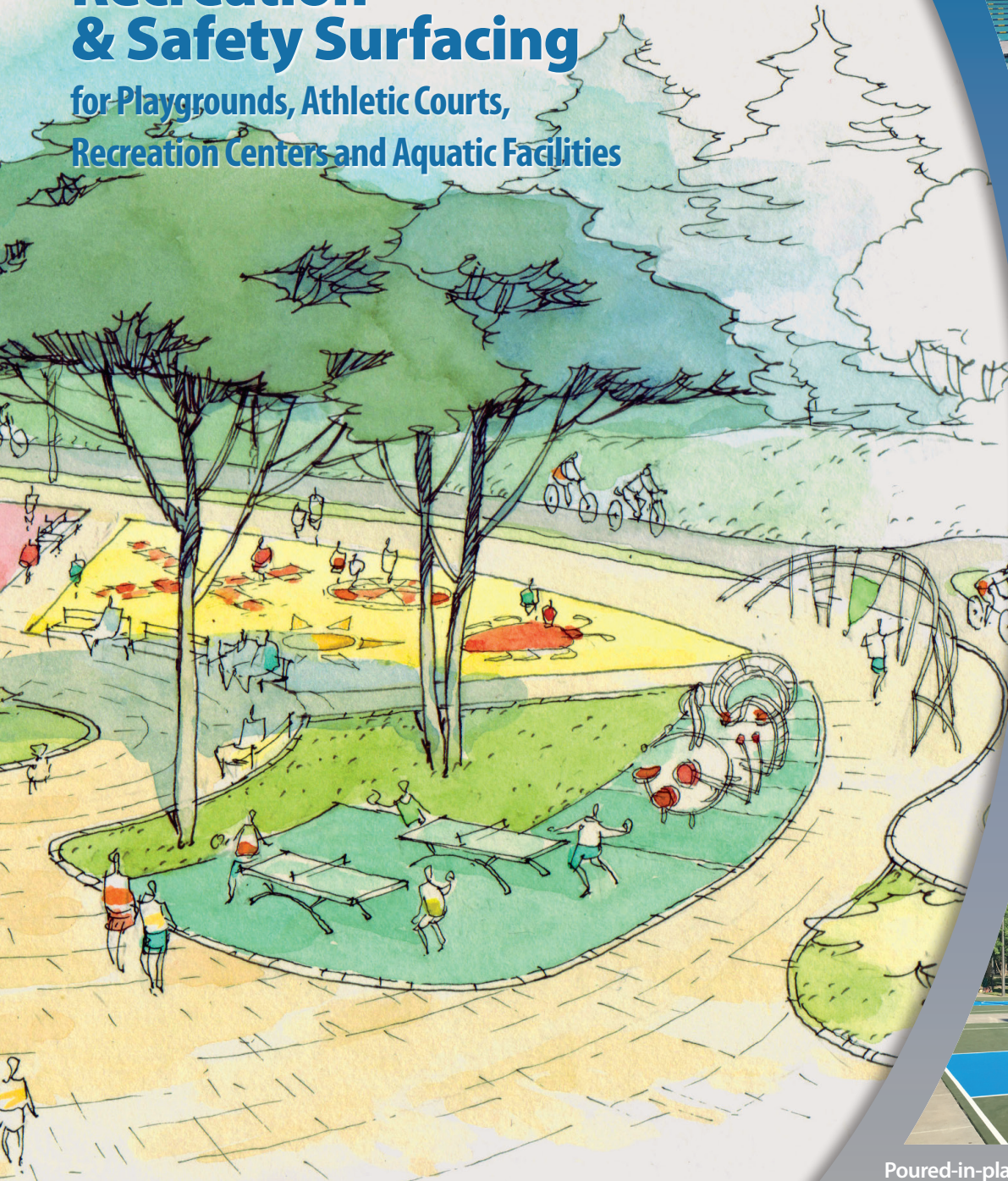


Recreation & Safety Surfacing

for Playgrounds, Athletic Courts,
Recreation Centers and Aquatic Facilities



Poured-in-place rubberized safety surfacing, as well as athletic courts, pool decks, splash pads, synthetic grass, and more.

FlexGround: Mission Statement

To provide innovative and high quality surfacing options, installed by a knowledgeable and caring staff, backed by unparalleled customer service.





Table of Contents

Rubberized/PIP Surfacing	3
Synthetic Turf Surfacing	7
Aquatic Surfacing	9
Sport Court Surfacing	11
Surface Repair and Maintenance/FlexGrout	15



Rubberized/PIP Surfacing

Synthetic Turf Surfacing

Aquatic Surfacing

Sport Court Surfacing

FlexGrout/Surface Repair & Maintenance

Rubberized/PIP Surfacing

FlexGround Standard

Highest Quality Industry Standard:

FlexGround Standard is our traditional, poured-in-place rubber safety surfacing. It is a two-layer system consisting of a cushioned base, composed of a high quality recycled cushion layer, and a top surface made of 1/2" urethane-adhered EPDM rubber granules. Each granule is 1-3mm in size. FlexGround Standard is durable, suitable for all age play areas and can be installed indoors or outdoors. FlexGround Standard materials are mixed and applied on-site, so that the thickness can be modified to meet varying critical fall heights. FlexGround Standard is IPEMA certified and also adheres to the ASTM 1292 Standard for critical fall heights.

Color and Urethane:

FlexGround Standard is offered in a wide array of colors, including blue, green, red and beige. Colors may be mixed or designed side by side. More intricate design work, involving numerous colors, patterns, logos, etc. is also available. FlexGround Standard is applied using aromatic urethane, however, a higher quality aliphatic urethane is also available.



Accessibility:

FlexGround Standard is a poured-in-place, stationary surface, allowing wheelchairs unhindered access and maneuverability. Heavily used areas under swings and slides are designed to maintain thickness and attenuation.



Download specs and drawings at
FlexGround.com

FlexGround EnduraFlex™ High Quality TPV Product:

FlexGround EnduraFlex is a superior poured-in-place rubber surface. It consists of two layers: a cushioned base composed of a high quality cushion layer, and a surface layer of 1/2" urethane adhered TPV (thermal plastic) granules. Each TPV granule is 1-4mm. TPV is a vulcanized product, making it better equipped to withstand daily wear and tear and color-fading due to UV exposure. FlexGround EnduraFlex is a more durable product, suitable for all age play areas, and may be installed indoors or outdoors. EnduraFlex materials are mixed and applied on-site so that the thickness can be modified to meet varying critical fall heights.



Color and Urethane:

FlexGround EnduraFlex is also offered in a wide array of colors, including blue, green, red and beige. Colors may be mixed or designed side-by-side. More intricate design work, involving numerous colors and patterns, is also available. FlexGround EnduraFlex is applied using aromatic urethane, however, a higher quality aliphatic urethane is also available.

Accessibility:

FlexGround EnduraFlex is a poured-in-place, stationary surface, allowing wheelchairs unhindered access and maneuverability. Heavily used areas under swings and slides are designed to maintain thickness and attenuation.



Poured-In-Place Color Chart



Colors may vary slightly from those pictured

Rubberized/PIP Surfacing

FlexGround UltraFlex™ Our Highest Quality Poured-In-Place Product:

FlexGround UltraFlex is the highest quality, longest lasting rubber safety surfacing on the market. UltraFlex is poured using the same two-layer system as FlexGround Standard and EnduraFlex, but utilizes a smaller (.5-1.5mm) granule TPV for the top surface wear course. Elevated urethane ratios bind the smaller granules together for a superior product, which boasts the best elongation and tensile strength in the industry. TPV is a vulcanized product, making it better equipped to withstand daily wear and tear and color fading due to UV exposure.

FlexGround UltraFlex is our most durable rubber surface, suitable for all age play areas, including water play, and may be installed indoors or outdoors. UltraFlex materials are mixed and applied on-site so that the thickness can be modified to meet varying critical fall heights.

Color and Urethane:

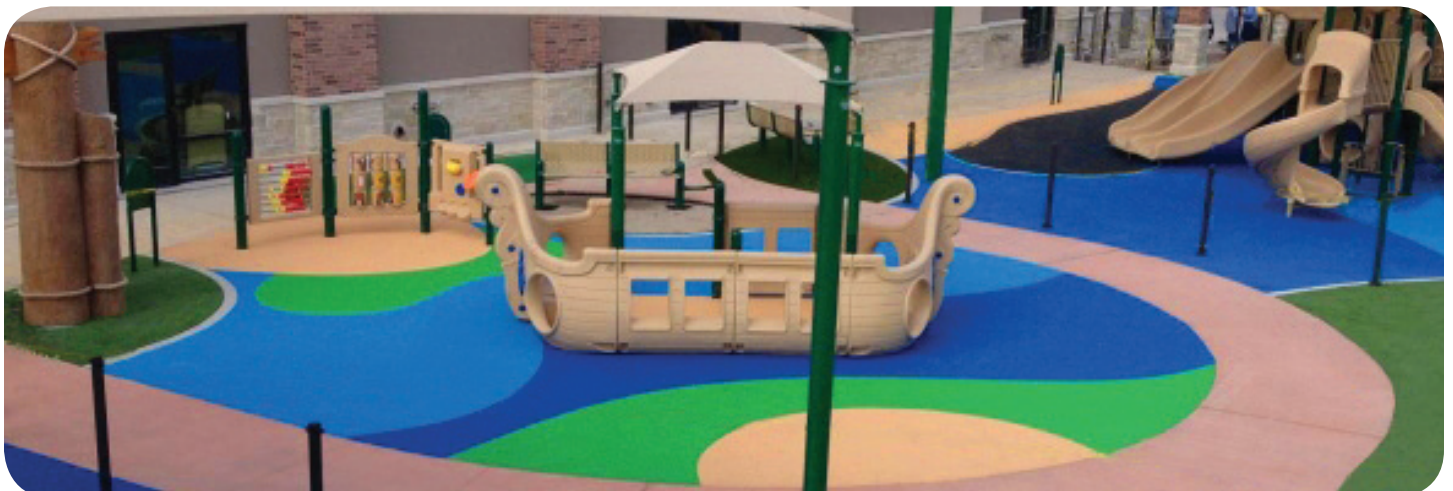
FlexGround UltraFlex is offered in a wide variety of colors. However, because UltraFlex utilizes smaller granules, we do not recommend mixing colors. UltraFlex utilizes aliphatic urethane only.



Accessibility:

FlexGround UltraFlex is a poured-in-place, stationary surface allowing wheelchairs unhindered access and maneuverability. Heavily used areas under swings and slides are designed to maintain thickness and attenuation.

*Download specs and drawings
at FlexGround.com*



FlexGround Xtreme Playground Surfacing

The Gold Standard:

FlexGround's Xtreme Playground Surfacing line is the gold standard in attenuated playground surfacing. It has been specifically engineered to withstand the rigors and elements to which common playground surfacing is exposed.

Utilizing a blend of industry recognized rubberized surfacing and infused with a proprietary mix of aliphatic thermoplastic urethane and chemically resistant color coat, our Xtreme PlayGround Surfacing line is guaranteed to remain impervious to cracking, fading, chipping, peeling, delamination and granulation and is the perfect application in high use areas such as under swings and at the bottom of slides. No matter the amount of foot or play traffic, natural UV exposure or common climactic elements, clients can remain confident in their pad's ability to remain strong and vibrant.

Compliance At its Core:

FlexGround's Xtreme Surfacing line has been shown to actually increase compliance (over standardized surfacing) with industry recognized and mandated codes, and is



IPEMA certified, adhering to ASTM 1292 Head Impact Criteria and all skid and flammability mandates.



Synthetic Turf Surfacing

Heavy Metal FREE!

FlexGrass artificial turf, originally pioneered by FlexGround, is an IPEMA certified grass and poured-in-place rubber safety surfacing. FlexGround FlexGrass utilizes the same cushion-based sublayer as our rubber top systems. The top, or “wear” layer, is then set with some of the highest quality synthetic turf available.

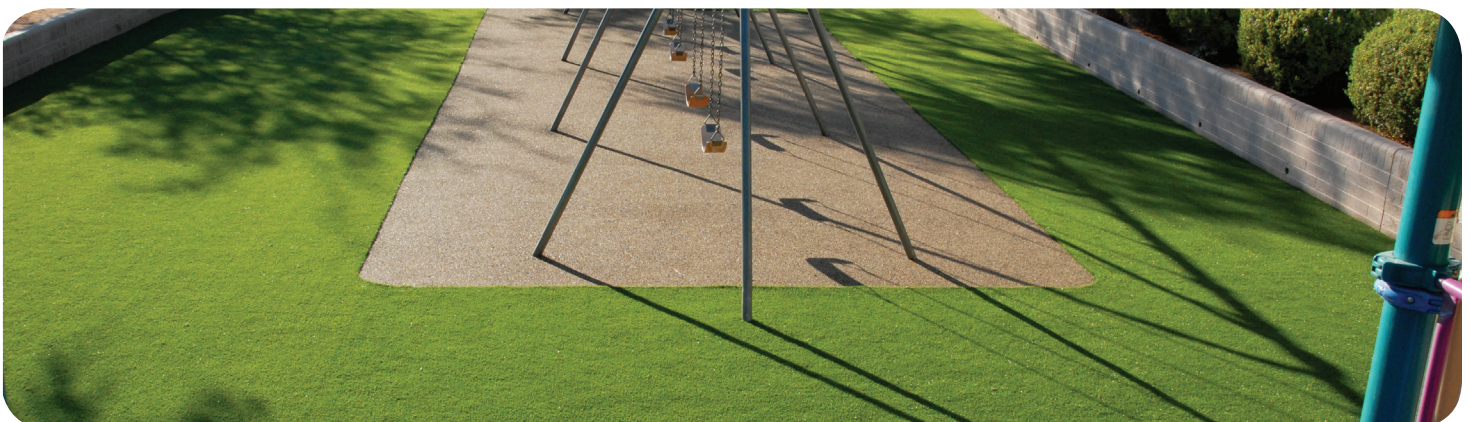
The FlexGrass Advantage:

Most synthetic grasses use a loose, black rubber filling to increase the strength and long-term viability of the turf. Unfortunately, this infill absorbs and emits extreme heat from outside temperatures, and comes loose after regular use, creating debris and maintenance issues. FlexGround FlexGrass uses an infill which can create, on average, a surface 10 degrees cooler than systems utilizing loose rubber infill. In addition, FlexGround FlexGrass is bound by a woven thatch layer base, allowing the infill to settle more securely in the base, which promotes long-term strength and wear resistance. FlexGrass is an exciting and innovative product from FlexGround. By combining the craftsmanship of our industry-leading cushion base with premium synthetic turf, we’ve created FlexGround FlexGrass, the most durable, maintenance free surfacing you can own. Best of all, it looks and feels remarkably like real grass!



Why Choose FlexGrass?

- Installs easily in just 2 days
- Virtually maintenance-free
- Completely porous and dries quickly after wet weather
- FlexGrass is a 60 oz. top layer, the most dense in the industry
- Fall height certified for ASTM 1292 and meets guidelines established by the Americans with Disabilities Act (ADA) and Consumer Product Safety Commission (CPSC)
- No nylon fibers, as found in other artificial grasses, which have been shown to contain lead
- Non-SBR infill



FlexGround FlexTrail™

Introducing FlexGround's newest innovation, FlexTrail. FlexTrail combines the flexibility of poured-in-place rubber surfacing with the durability of a bonded stone surface. The result is a highly aesthetic, wear-resistant surfacing, engineered for use in high-traffic areas. Walking trails, cart paths, biking paths, elevated decking, patios, pool decks, livable rooftops... if you can dream it, FlexTrail is the answer.

FlexTrail is available in porous and non-porous options and can be installed right over top of most existing surfaces with little or no excavation required. Tired of bird baths and puddles forming on or around your existing surface? Porous options can be laid at varying depths to assist with retaining and holding water so that it can dissipate over time without jeopardizing the safety of pedestrians. Is it critical that a subsurface remain dry and free of moisture penetration? Then our non-porous options may be just what you are looking for.

FlexTrail is a custom mixed product, so color and stone combinations can be fit to blend into natural landscapes, or "pop" in urban cityscapes. And just like all FlexGround products, it is hand-troweled on site to ensure absolute quality standards.



FlexTrail™ can be installed right over top of most existing surfaces with little or no excavation required.



FlexGround KoolFlex Aquatic Decking Evolution:

KoolFlex is a revolutionary pool deck and aquatic surfacing solution.

This revolutionary formula was engineered to serve as the final solution for any surfacing which requires the strength necessary to withstand areas of high chlorination, alkaline and UV exposure.

What makes KoolFlex so special? KoolFlex is an aliphatic thermoplastic urethane. This means that, unlike acrylic systems, KoolFlex is highly resistant to cracking, chipping, peeling, fading and is softer on bare feet.

KoolFlex is available in an array of colors and textures that can be tailored to meet your specific pool deck or splash pad needs.

Acrylic Pool Deck:

FlexGround uses only the highest quality materials in order to provide our clients with a beautiful pool deck meant to stand the test of time.

Our standard pool decking systems are cementitious acrylic in nature and are offered in an array of colors, styles and texturing options. FlexGround pool decks are



applied by only approved master applicators. FlexGround's commitment to uncompromising quality means that we don't stop until clients are 100% satisfied.

Earth Tones



Colors may vary slightly from those pictured

Download specs and drawings at
FlexGround.com

Xtreme Water Play Surfacing Compliant At Its Core:

FlexGround's Xtreme Water Play line has been formulated to meet strict water play compliance standards mandated by the Department of Health. Our Xtreme Water Play surfacing uses only the highest quality, anti-microbial materials, and is non-porous from top to bottom.

Water Play Without Bounds:

FlexGround has worked closely with some of the industry's leading water play equipment manufacturers to offer an Xtreme Water Play line that is IPEMA certified and can be used in conjunction with water play equipment that requires ASTM 1292 compliance for impact attenuation and all necessary skid requirements. Your water play design capabilities now know no bounds.

Soft, durable surfacing for your water park or water play area.



Brights



Colors may vary slightly from those pictured



Integrating FlexGround into your project will create a showcase of
INNOVATIVE • QUALITY • SURFACING

Sport Court Surfacing

SportFlex Standard

For resurfacing of minimally damaged areas

Cracking is repaired with a tension-resistant rubberized compound. Surface coated with a high grade color coating infused with our proprietary SportFlex emulsion.

SportFlex Premium

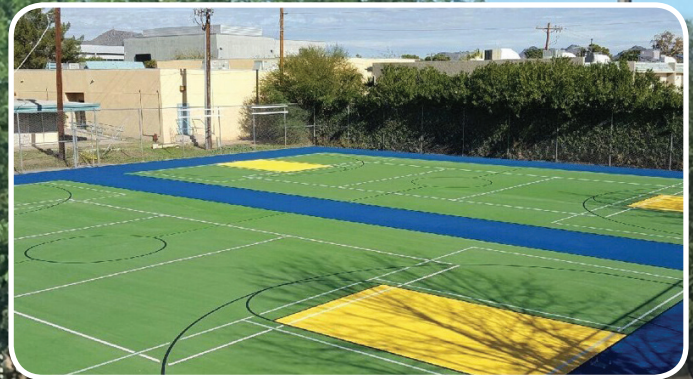
For resurfacing of courts showing typical cracking and wear patterns

Cracking is repaired with a tension-resistant rubberized compound. Polymer infused cementitious base coat is applied to maintain expansionary integrity for a texture finished system. Surface coated with a high grade color coating infused with our proprietary SportFlex emulsion.

SportFlex Ultra

For resurfacing of severely damaged courts showing structural degradation

1/4" - 3/8" rubberized base is poured-in-place over the existing surface to achieve maximum structural integrity. Base is grouted with a high adhesion, flexible grouting compound. Primed with polyolefin based primer. Surface coated with a high grade color coating infused with our proprietary SportFlex emulsion.



**CONTACT A FLEXGROUND
REPRESENTATIVE FOR
AVAILABLE COLORS FOR YOUR
SPORT COURT SURFACING**

Integrating FlexGround into your project will create a showcase of
INNOVATIVE • QUALITY • SURFACING

High Wear Areas

FlexGround is proud to introduce our revolutionary and patent pending FlexGrout system. This newly engineered grouting compound repairs and strengthens rubberized surfacing systems, and has been tested to withstand even the most extreme conditions.

Tired of repairs to loose and granulated rubber in high-wear areas such as underneath swings or at slide exits? Or are you installing a new pad and just want to make sure you don't have to deal with that inevitable hassle? FlexGrout is the perfect option for use in high-wear areas. The grouting compound works itself deep into the core of the rubber in order to reinforce the strength of the pad in the areas subject to the most use and abuse. Even thousands of little feet are no match for FlexGrout!

FlexGrout:

FlexGrout is a medium viscosity grout engineered to penetrate and fill the voids between a pad's rubber granules. The precise formulation completes an integral bonding and color-based revitalization of the old rubber pad. All necessary slip/skid resistance is maintained by exposure of the pad's original rubber granules at the surface. FlexGrout is available in both standard and custom colors to fit the aesthetics of any playground.

ColorSeal:

ColorSeal is a color-based top dressing designed to reinvigorate the look and color of pads after they have been grouted with FlexGrout.

FlexGrout has been shown to actually increase compliance (over standardized surfacing) with industry recognized and mandated codes, including ASTM 1292 Head Impact Criteria and all skid and flammability mandates.



FlexGrout™ High Wear Areas



Rubberized/PIP Surfacing

Synthetic Turf Surfacing

Aquatic Surfacing

Sport Court Surfacing

FlexGrout can also be used on new or slightly used pads as a strengthening compound for areas of high wear and tear.

*Download specs and drawings at
FlexGround.com*

FlexGrout/Surface Repair & Maintenance

FlexGrout™

Surface Repair & Maintenance

FlexCoat™

FlexCoat is a urethane top dressing which may be applied to any rubber safety surface. Our FlexCoat urethane coating rebinds the rubber granules, improving the product's useful life. FlexCoat also rejuvenates and refreshes surface colors. FlexCoat is recommended as a preventative maintenance application. To ensure longevity, it is recommended that a FlexCoat be applied every two years.

FlexFix™

Finding holes in your previously applied rubber surface? FlexGround can quickly and easily repair minor and major damage. Small repairs can be made in various designs and colors (triangles, circles, happy faces etc.) in order to create the appearance that the repaired area was part of the original design.

FlexTop™

FlexTop is the solution for widespread and severely damaged rubber. It consists of reapplying the EPDM or TPV top surface (and cushioning where needed). FlexTop will be applied 1/2" thick over top of the existing rubber to conceal any damage and maintain or improve critical fall height measures. You'll be amazed by the "brand new" look of your surface!

FlexGrout™

FlexGround's proprietary solution to old and worn pads. Please see pages 13-14.





Design Capabilities

Do you have that unique or special design in mind? Do you want your playground to stand out from the rest? FlexGround is fully equipped to help you design the rubberized pad of your dreams. Whether vegetables, horses, hopscotch, simple circles or a complex pattern... if you can dream it, we can design it. Consult with our design team today to begin building your masterpiece.

Who is FlexGround?

We've been in the news



Riverview Park, Mesa, Arizona

As featured in *Landscape Contractor* and *Landscape Architect* Magazines

"Riverview Park is... one of the largest continuous rubberized pads in the United States. [FlexGround] worked closely with other various contractors to make this dream a reality for the City of Mesa and the Chicago Cubs".

– *Landscape Contractor Magazine*, September 2014

But most importantly, our focus is you

"I give FlexGround an A+. The end product was exactly what I had hoped for and they really went out of their way to make sure I was happy. They were always punctual and conducted themselves in a professional manner throughout the installation process. I would highly recommend FlexGround, and will no doubt call them for all of my safety surfacing needs in the future."

– **A. Potts, Scottsdale, Arizona**

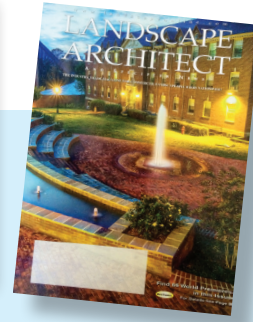
"Thank you for the beautiful splash pad that you donated and installed on the property of our Children's Shelter. The children staying with us have very much enjoyed it. It has even helped some of our children get over their fear of water and has been great entertainment for our children with sensory challenges! Thank you again for your donation and kindness; it is an addition to our program that will be treasured for many years to come."

– **Cassandra Rondel Asencio,
Crisis Nursery, Phoenix, Arizona**

"I want to also thank you, personally, for all of your understanding and assistance over the year it took to get this project going and completed. I know I changed my mind a dozen times... but throughout it all you were patient and understanding and for that we are so very grateful!"

– **J. Sherman, Phoenix, Arizona**

We're philanthropic



As Featured in
Landscape Architect Magazine
and
CBS5az.com

"Chace Alderete, a 6-year old boy from Arizona was spirited, adventurous, kind-hearted and above all, enthusiastically caring. So, when in March 2013, Chace was tragically killed by a malfunctioning horse trailer at his favorite recreation facility... Flexground, with the assistance of...local volunteers, pledged to build a playground in his honor."

—*Landscape Architect Magazine, June 2014*

We've won an award or two

Inc. 500



"FlexGround named an Inc. 500
Fastest Growing Company"



"Sand is so last century. Step on a playground today and you'll probably find a spongy surface that provides both grip and safety padding. Much of this multicolored flooring comes from FlexGround..."

—*Inc. Magazine, September 2014*

Let us prove it

A letter from our President and CEO

Thank you for considering FlexGround for your recreational surfacing needs. Client satisfaction is, and always has been, our primary goal. And while other companies may advertise a similar dedication to customer satisfaction, we here at FlexGround like to prove it. With that in mind, here is my personal cell phone number (480) 694-8320. Should you ever have a question or need go unattended, I invite you to call me directly. I assure you that every effort will be taken to ensure your total and complete satisfaction. Thank you again for your consideration.

— **Bill J. Stafford, President and CEO, FlexGround**

FlexGround
Designs and installs surfacing for playgrounds and sports areas.

2014 RANK	359
2013 REVENUE	\$5.1 M
2014 REVENUE	\$361,000
INDUSTRY	Construction
Location	Tempe, AZ
Founded	2010
Employees	33
Jobs added, prev 3 years	26
Website	FlexGround.com

2014 INC. 500 HONORS

888.571.1080

www.flexground.com

