

“Is a Roof Wash a Permanent Solution?”

A roof wash is a short-term solution to a long-term problem! Although it will get your roof looking clean as new, it is important to understand the factors that will cause that moss and algae to return so that you can find the proper solution to forever eradicate your dirty roof problems!

Factors that Accelerate Growth:

Tree Coverage: creates ideal shade for moss and bacteria to develop

Dormers, Bump-outs, Chimney, Skylights, etc.: create addition shade area on roof optimal for algae and moss

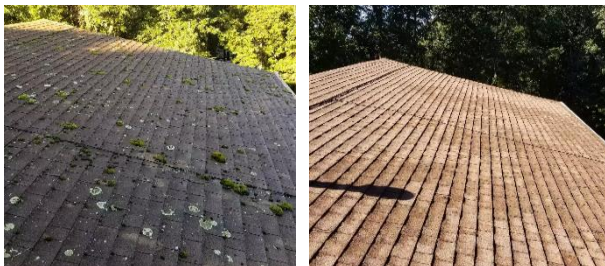
Loose Debris/Leaves: these hold additional unwanted moisture against your roof

Gutter Ends or roof mergers: where dirty water can flow freely down shingles

Presence of Moss/Algae: once it's on your roof it is only going to continue to spread!

For the factors you can't control, our Preventative and Touchup Program will, ensuring moss and bacteria is killed before it can spread!

Dirty Roof? Not Anymore!



We use fully eco-friendly and biodegradable solutions to loosen all debris and kill moss making pressure washing easy to eliminate all undesired stains and moss that could be eating away at your shingles, without causing additional shingle damage.

Call or Visit Website for a Free Quote!



Domenic Cianci

(508) 259-7099

Ecosaferoofwashing.com

Westboro, MA, 01581




**Eco-Safe Washing
& Maintenance**

*Removes Stains and Moss from
Roofs, Siding, Decks, Patios,
Walkways, & more!*

No Bleach!
Eco-friendly.
Biodegradable.
Fully Insured.

Common Roof Invaders:



Moss:

A flowerless plant that thrives in damp shaded areas and reproduces by means of spore release. It will trap water against the roof causing cracks or water leaks through shingles.



Gloeocapsa Magma (Black streaks):

Hideous streaks that can easily go undetected as being a form of bacteria and if untreated can take over the entire roof.



Lichen:

Small white/greenish algae fungi that anchor themselves to your shingles by feeding off limestone in shingles. When removed, a faint black mark will stay where they have already eaten through the granules.



What's The Harm?

Moss, though it may be harmless in terms of its anatomy, can cause many problems when it spreads. Not only does moss thrive off the dampness of your roof, once moss starts showing up, **the moisture held by the plants' trap water from being able to escape and prevent proper evaporation.** Once the growth begins, leaving it untreated will only create a greater habitat for moss and other bacteria to prosper and eventually spread to all the roof and **may cost you a new roof!**



Ignoring the presence of moss for years can give plenty of time for **trapped moisture to soften the porous material in shingles, causing them to rot and crack, along with being much more vulnerable to elements like rain and wind.** Excess moss build up can eventually **lead to water leaks, or even worse, mold.** Mold is much more hazardous in terms of its ability to destroy structures and cause **permanent damage** along with its linked **health risks** if the mold gets within your house. It's important to tackle the issue before it turns into a much more serious project. A dry roof is a clean roof!

Add- On Packages!

Don't stop with just a wash! Consider adding one or more of our addition services to give your house the attention it deserves!



- Exterior Washing

- Window Cleaning

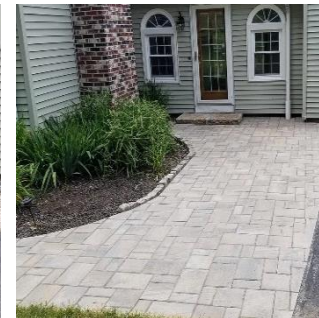
- Gutter Cleanings

- Patio / Walkway Restoration

- Masonry Installation

- Chimney Repairs/Waterproofing

- & More!



Make sure to leave use a review!