

ELIAV KOHL

STRIPED

(2016)

for flute, oboe, clarinet in Bb, bassoon, guitar, frame drum and objects (electric stove  
and a metallic fence) viola and cello

Dedicated to Alex Project, Tedarim and Meitar Ensemble

SCORE IN C

# Explanation of signs and abreviations

## Flute

W.T = whistle tone



Air sounds, as less pitch as possible



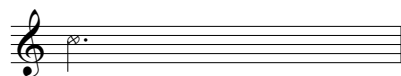
Airy sound with tongue pizz



Flutter tongue with no pitch. cover the embachure completely with your mouth

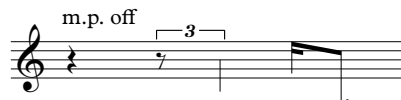


Tongue pizz.



Airy sound

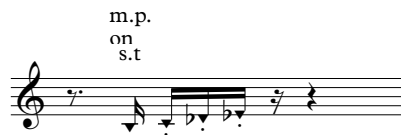
## Oboe



Mouthpiece off - blow air through the instrument and change fingering to produce the approximate pithces.



Mouthpiece off - play slap tongue through the instrument and change fingering to produce the approximate pithces.



Slap tongue

## Clarinet in Bb



Air sound



Measured key clicks and key clicks trill, to be played while making air sounds.



Slap tongue



Flutter tongue

## Bassoon



Tap the reed with your tongue and apply very little air to produce a helicopter-like sound.

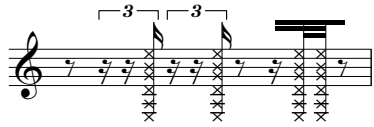


Flutter tongue with no pitch

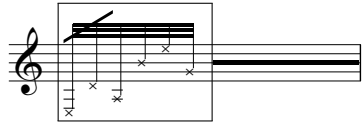


Key clicks

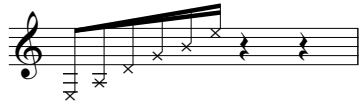
# Guitar



Strum while muting with your right arm and left hand, to produce as less pitch as possible.



Fast random plucks while muting the strings with your left hand.



Pluck the indicated muted pitches.



Scratch the VI string



Molto vibrato

c.l.b.



Col legno battuto

# Viola

c.l.b.



Col legno battuto

pizz.



Mute the string

A musical staff in treble clef with a 7/8 time signature. It shows a triplet of eighth notes on the first string, followed by a quarter rest and another quarter rest. Above the first note is the instruction 'coil' and above the first two notes is 's.bow'.

Use a slow bow to scrtach the coil behind the bridge.



A musical staff in treble clef with a 7/8 time signature. It shows a single note on the first string with a fermata above it. Above the note is the instruction 'heli.' and below it is the number '1'.

Move the bow rapidly up and down the finger board, to produce a helicopter-like effect.

### Strings - general abbreviations:



- o.p = over pressure.
- s.t. = sul tasto
- s.p. = sul pont.
- s.v. = senza vibrato

### Cello

A musical staff in bass clef with a 7/8 time signature. It shows a sequence of four eighth notes on the first string, followed by a quarter rest. Above the first note is the instruction 'pizz.'.

Muted pizz.



A musical staff in bass clef with a 7/8 time signature. It shows a sequence of five eighth notes on the first string, followed by a quarter rest. Above the first note is the instruction 'c.l.b.' and above the first five notes is the number '5'.

Col legno battuto

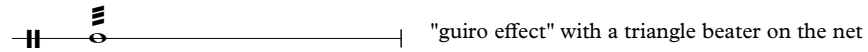


A musical staff in bass clef with a 7/8 time signature. It shows a sequence of two eighth notes on the first string, followed by a quarter rest and a double bar line. Above the first note is the instruction 'To Vc.' and above the first two notes is 'tailpiece To Perc.'.

Bow the cello's tailpiece.

# Percussion

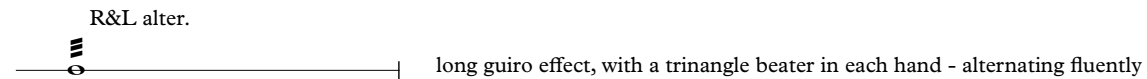
Stove = Electric stove with a metal grill net (net size should be approx. 25cm\80cm, and the distance between each spine appr. 1.5cm)\*



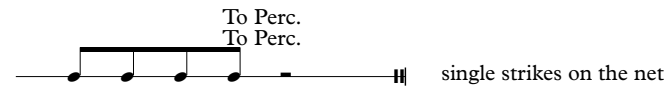
"guiro effect" with a triangle beater on the net



tremolo between two spines



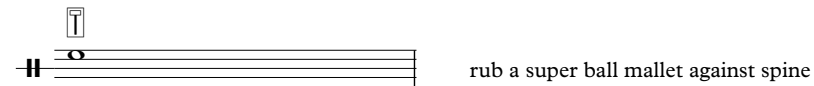
long guiro effect, with a triangle beater in each hand - alternating fluently



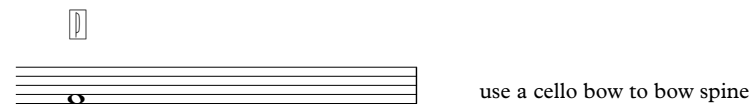
single strikes on the net



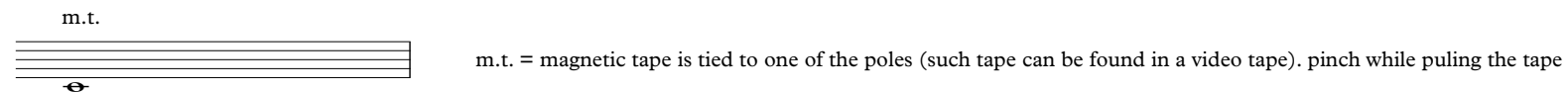
Fence = metal fence with a stand. (total size should be approx. 120cm\120cm, and the distance between each spine is approx. 12cm)\*



rub a super ball mallet against spine



use a cello bow to bow spine



m.t. = magnetic tape is tied to one of the poles (such tape can be found in a video tape). pinch while pulling the tape

**\*stove and fence sizes may change. the measurements given are according the debut**



6

Fl. *pp* 5

Ob. *p* 3 s.t. 3 3

Cl. *p* 3 k. tr. 3

Bsn. *p* 5 5 5

Stove *mf* *p* *mp* *pp*

Gtr. *ppp* *mp* 3 3 3 3

Vla. *mp* pizz. arco s.p. gliss. c.l.b. *p* 3 3 3 3

Vc. arco *ppp* pizz. *p*

appr. 2.5" appr. 4.5" appr. 2.5" appr. 4.5" appr. 2.5" appr. 4.5"

5/4 5/4 5/4 5/4 5/4 5/4 5/4 5/4

Detailed description: This page of a musical score features eight staves for different instruments. The Flute (Fl.) staff begins with a measure containing a whole note chord, followed by a rest, and then a series of notes with a '5' below them. The Oboe (Ob.) staff has a triplet of eighth notes, a slur with 's.t.', and another triplet. The Clarinet (Cl.) staff features a triplet with a 'k.' and 'tr.' marking, followed by a slur and another triplet. The Bassoon (Bsn.) staff has a whole note chord, a rest, and then a series of notes with '5' below them. The Snare Drum (Stove) staff shows a rhythmic pattern with dynamics *mf*, *p*, *mp*, and *pp*. The Guitar (Gtr.) staff has a whole rest, a slur with *ppp*, and then a series of notes with triplets and an *mp* dynamic. The Viola (Vla.) staff has a slur with *mp*, a 'pizz.' marking, a slur with *mp*, an 'arco' marking, a slur with *p*, and then a series of notes with triplets and a 'c.l.b.' marking. The Violoncello (Vc.) staff has a slur with *ppp*, a 'pizz.' marking, and a series of notes with a *p* dynamic. Rehearsal marks 'appr. 2.5"' and 'appr. 4.5"' are placed above the staves. The time signature is 5/4.



11

Fl. *p* *pp* *p* *3*

Ob. *m.p. on s.t.* *pp* *pp* *s.t.* *3* *3* *3* *p*

Cl. *k. tr.* *p* *mf* *mp* *f* *s.t.* *p*

Bsn. *5* *5* *5* *5* *5* *p* *5* *5* *p* *mp* *k.* *5* *pp*

Stove *pp* *p* *pp* *p* *pp*

Gtr. *p* *ppp* *p* *ppp* *p* *ppp* *p* *pp* *pp* *p* *mp* *5*

Vla. *arco* *pp* *ppp* *c.l.b.* *pp* *pp* *arco* *gliss.* *pp* *pizz.* *p*

Vc. *3* *3* *c.l.b.* *pp* *5* *arco* *pp* *3* *3* *gliss.* *gliss.* *p* *p* *pizz.* *p*

14 *appr. 2"*

Fl. *p* *s.t.* 5

Ob. *m.p. off* 5 3 *p* 3 s.t. 3 3 3

Cl. *k.* *p*

Bsn. 5 5 5 *mp*

Stove *appr. 2"* *p* *pp*

Gtr. *appr. 2"* *p* *s.p.* 5 3 *p*

Vla. *appr. 2"* *p* *arco* *pizz.* 5 5 3 *p*

Vc. *p* 5 *arco* *coil* *s.bow* IV IV *p* 1.v. 1.v.

18

Fl. *s.t.* *p* *3* *p* *pp*

Ob. *m.p. on s.t.* *p* *pp* *m.p. off s.t.* *p* *3* *3* *3*

Cl. *b<sub>2</sub>.* *pp* *p* *s.t.* *3* *3* *p*

Bsn. *5* *5* *mp* *p* *3* *mp* *mf* *5* *p* *5* *5* *3*

Stove *p* *pp* *3*

Gtr. *s.p.* *p* *3* *p* *s.p.* *w.b.* *5*

Vla. *tr.* *pp* *p* *heli. I* *pp* *mp*

Vc. *arco* *s.p.* *p* *s.t.* *3* *mf* *pp* *ord.* *gliss.* *s.p.* *pizz.* *p* *5* *5*

22

Fl. *p* *appr. 2.5"*

Ob. *m.p. on* *p* *mp* *p* *pp*

Cl. *p* *k.* *3* *3* *trem.* *pp* *p* *pp* *3* *5* *3*

Bsn. *p* *3* *p* *pp* *pp* *3*

Hr. *trem.* *ppp* *appr. 2.5"* *ord.* *mf* *pp*

Gtr. *p* *appr. 2.5"* *mp* *s.p.* *p*

Vla. *p* *appr. 2.5"* *pp* *p* *p* *gliss.* *3* *p*

Vc. *arco* *p* *pp* *p* *pp* *pp* *p* *pp* *p*



30

Fl. *p*

Ob. *m.p off*  
*s.t.*  
*p* *m.p on*  
*p*

Cl. *pp* *p* *pp* *p* *pp* *pp* *p* *pp* *p*

Bsn. *pp* *p*  
reed off  
reed on

Stove *pp* *p* *pp* *p* *R&L alter.*

Gtr. *p* *p* *3* *3* *3* *3* *s.t.* *3* *p*

Vla. *p* *pizz.* *p* *3* *3* *arco* *p* *gliss.* *7*

Vc. *pp* *mp* *pp* *p* *pp* *p* *pp* *p* *p*

Detailed description of the musical score: This page contains measures 30 through 33 of a musical score. The instruments are Flute (Fl.), Oboe (Ob.), Clarinet (Cl.), Bassoon (Bsn.), Snare Drum (Stove), Guitar (Gtr.), Viola (Vla.), and Violin (Vc.).  
 - Measure 30: Flute has a whole note chord. Oboe has a sixteenth-note pattern. Clarinet has a half note with dynamics *pp*, *p*, and *pp*. Bassoon has a half note with dynamics *pp* and a fingering of 5. Snare Drum is silent. Guitar has a half note chord with dynamics *p* and *pp*. Viola and Violin are silent.  
 - Measure 31: Flute has a half note with dynamics *p*. Oboe has a sixteenth-note pattern with dynamics *m.p off*, *s.t.*, and *p*. Clarinet has a half note with dynamics *p*. Bassoon is silent. Snare Drum is silent. Guitar has a sixteenth-note pattern with dynamics *p* and triplets. Viola has a half note with dynamics *p*. Violin has a half note with dynamics *pp*.  
 - Measure 32: Flute has a half note with dynamics *p*. Oboe is silent. Clarinet has a half note with dynamics *pp*, *p*, and *pp*. Bassoon is silent. Snare Drum has a half note with dynamics *pp*, *p*, and *pp*. Guitar has a half note with dynamics *p* and triplets. Viola has a half note with dynamics *p* and a triplet. Violin has a half note with dynamics *pp*.  
 - Measure 33: Flute has a half note with dynamics *p*. Oboe has a half note with dynamics *m.p on* and *p*. Clarinet has a half note with dynamics *pp* and *p*. Bassoon has a half note with dynamics *p*. Snare Drum has a half note with dynamics *p* and *R&L alter.* Guitar has a half note with dynamics *p* and a triplet. Viola has a half note with dynamics *p*, *arco*, and *gliss.* Violin has a half note with dynamics *p*.

34

Fl. *mp* *mf* *mf* 9

Ob. *mf*

Cl. *f* 5 3

Bsn. *f*

Gtr. *f* *ff*

Vla. *p* *p* *f* gliss. gliss.

Vc. *mp* *f*





43

Fl. *mp* *pp* *n*

Ob.

Cl. *mp* *pp* *mp* *pp*

Bsn. 5

Fence *n* 3 *p*

Gtr. *mf* *p*

Vla. *p* *scr.* *ord.* *gliss.* *pp* *ord.* *gliss.*

Vc. *pizz.* 5 3 *mf* *arco* *tail* *mp*

appr. 4.5" appr. 3" appr. 4.5" appr. 3" appr. 4.5" appr. 3" appr. 4.5" appr. 3"

♩=60

12

47

Fl. *mp*

Ob. *m.p. off* *p* *s.t.* *mp* *5* *3* *5* *F* *m.p. on* *pp* *p* *pp*

Cl. *pp* *3* *p* *pp* *s.t.* *mp* *mp* *n* *pp* *n*

Bsn. *pp* *5* *5* *5* *5* *pp* *p* *pp* *k. tr.* *p*

Fence *mf* *mp* *mp*

Gtr. *ppp* *p* *c.l.b.* *p* *mp*

Vla. *n* *pp* *n* *c.l.b.* *p* *3* *3* *3* *3* *s.p. gliss.* *p* *c.l.b.* *pp* *arco*

Vc. *o.p. → ord.* *f* *p* *tail* *mp* *c.l.b.* *p* *3* *3* *3* *3* *arco* *mp* *pp* *ord.*

51

Fl. *m.v.*  
*p* *pp* *mf* *ppp* *ppp*

Ob. *m.p. off*  
*pp* *mp* *s.t.* *5*

Cl. *k. tr.*  
*p* *mf* *mf* *3*

Bsn. *(tr)*  
*f* *mp* *5* *5* *5* *5* *5*

Drum *p* *pp* *Fence* *pp*

Gtr. *s.t.* *ord.*  
*pp* *mp* *ppp* *mf*

Vla. *p* *pp* *ppp* *mf*

Vc. *tail*  
*mp* *pp* *mf*

appr. 9" w.t. *ppp* appr. 2" w.t. *ppp* 13



62

Fl. *fp* *p* *ppp* *pp* s.v.

Ob. *p* *pp* *p* *ppp*

Cl. *mf p* *mf p* *mf ppp*

Bsn. *mf p* *mf* *ppp*

Gtr. *sf mp* *sf mp* *sf mp* *p*

Vla. s.v. *pp* *p* *pp* s.v.

Vc. *p* *pp* *p* s.v.

Detailed description: This page of a musical score, numbered 15, contains seven staves for different instruments. The Flute (Fl.) staff starts at measure 62 with a dynamic of *fp*, followed by *p*, *ppp*, and *pp*. The Oboe (Ob.) staff has dynamics *p*, *pp*, *p*, and *ppp*. The Clarinet (Cl.) staff features dynamics *mf p*, *mf p*, and *mf ppp*, with various articulations like triplets and quartets. The Bassoon (Bsn.) staff has dynamics *mf p*, *mf*, and *ppp*. The Trumpet (Gtr.) staff has dynamics *sf mp*, *sf mp*, *sf mp*, and *p*. The Viola (Vla.) staff has dynamics *pp*, *p*, and *pp*. The Violin (Vc.) staff has dynamics *p*, *pp*, and *p*. The score includes various musical notations such as slurs, ties, and dynamic markings.

67

Fl. *mp* *f* *pp* *mp* *pp* s.v.

Ob. *p* *pp* *p* *mf* *p* *mf*

Cl. *p* *ppp* *p* *ppp* *mf* 3 5

Bsn. *p* *ppp* *p* *pp* 3 4 3

Gtr. *mf* *sf* *p* *f* 5 3 5

Vla. *mp* *pp* *mp* *p* *gliss.* s.v.

Vc. *f* *p* *f* *p* *mf* s.v.

Detailed description: This page of a musical score covers measures 67 to 70. It features seven staves: Flute (Fl.), Oboe (Ob.), Clarinet (Cl.), Bassoon (Bsn.), Trumpet (Gtr.), Viola (Vla.), and Violoncello (Vc.). The music is in 4/4 time. The Flute part starts with a melodic line in measure 67, marked *mp*, and continues with a sustained note in measure 68, marked *f*. In measure 69, it has a rest, and in measure 70, it plays a note marked *pp*. The Oboe part has a melodic line in measure 67, marked *p*, and a sustained note in measure 68, marked *pp*. In measure 69, it has a rest, and in measure 70, it plays a note marked *p*. The Clarinet part has a melodic line in measure 67, marked *p*, and a sustained note in measure 68, marked *ppp*. In measure 69, it has a rest, and in measure 70, it plays a note marked *p*. The Bassoon part has a melodic line in measure 67, marked *p*, and a sustained note in measure 68, marked *ppp*. In measure 69, it has a rest, and in measure 70, it plays a note marked *p*. The Trumpet part has a melodic line in measure 67, marked *mf*, and a sustained note in measure 68, marked *mf*. In measure 69, it has a rest, and in measure 70, it plays a note marked *f*. The Viola part has a melodic line in measure 67, marked *mp*, and a sustained note in measure 68, marked *pp*. In measure 69, it has a rest, and in measure 70, it plays a note marked *mp*. The Violoncello part has a melodic line in measure 67, marked *f*, and a sustained note in measure 68, marked *f*. In measure 69, it has a rest, and in measure 70, it plays a note marked *p*. The score includes various dynamics, articulations, and performance instructions such as *gliss.* and *s.v.* (sordina).

72 17

Fl. *s.v.* *ord.*

Ob.

Vla. *s.t.* *scr.*

Vc. *scr.*

*p* *pp* *pp* *ppp* *p* *mf* *ppp* *mp* *p*



77 *reed off*

Bsn. *f* *mp* *p*

Fence *m.t.* *ff* *m.t.* *f* *m.t.* *mp*

Vc. *o.p.* *ff* *p*

*appr. 5"* *appr. 3.5"* *appr. 3"*





88

Fl. *pp* *n* s.v.

Ob. *pp* s.v.

Cl. *pp* *n* s.v.

Bsn. *pp* 3 5 3

frame drum *pp* *p* 3 3 5 3 *pp*

Gtr. 3

Vla. *pp* II 3 tr III 3 tr 6 5 3 *pp* *n*

Vc. *n* *n* *pp* *ppp*

Detailed description: This page of a musical score covers measures 88 to 91. The Flute part begins with a rest in measure 88, followed by a half note in measure 89, and a half note with a grace note in measure 90. The Oboe and Clarinet parts have half notes in measure 88 and 89, with the Clarinet part including a grace note. The Bassoon part features a complex rhythmic pattern of eighth notes with triplets and quintuplets in measures 88 and 89. The frame drum part has a dense pattern of eighth notes with triplets and quintuplets in measures 88 and 89. The Guitar part has a triplet of eighth notes in measure 89. The Viola part has a half note in measure 88 and a half note with a grace note in measure 90. The Violin part has a half note in measure 88 and a half note with a grace note in measure 90. Dynamics range from *ppp* to *n*. Performance markings include *s.v.* (sordano) and *tr* (trills).