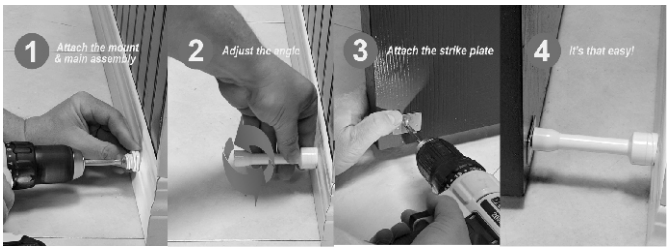


SLAM GENIE™

MAGNETIC DOOR STOP

INSTALLATION INSTRUCTIONS



CHOOSE THE LOCATION FOR YOUR SLAM GENIE™ DOOR STOP

You can work out where to install your SLAM GENIE™ door stop by holding the body of the SLAM GENIE™ against the wall and bringing the door close to it. Measure two inches in from the edge of the door furthest from the hinge. Mark this spot on the baseboard. Make sure that the SLAM GENIE™ isn't set too high or low. (Most interior doors are hollow about 1.25" above the bottom of the door, so if you mount it higher than 1.25" you risk damaging your door as the screw will not hold because of the super strong magnet used in the SLAM GENIE). *CAUTION: If you already have a doorstop and have removed it, be sure to move the SLAM GENIE™ base slightly to the left of the right to use a new screw hole. Failure to do so may damage your baseboard.*

STEP ONE

ASSEMBLE AND INSTALL THE DOOR STOP

Put the screw through the hole in the threaded adaptor of the door stop. Then slide the baseplate onto the screw with the divots facing away from the wall. Align the two pieces to make a 45 degree angle from the baseboard to ensure maximum contact from the magnet to the base plate. An angle above or below will reduce the efficiency of SLAM GENIE™. Use a screwdriver to securely attach the base plate and threaded adaptor to the wall. Make sure that it is tight and at a 45 degree angle from the floor.

STEP TWO

ATTACH THE BODY OF THE NO SLAM

Twist the main body of the SLAM GENIE™ on to the threaded adaptor.

STEP THREE

INSTALL THE STRIKE PLATE

Take the strike plate and allow it to attach to the magnet with the hole at the bottom of the magnet and gently nudge the strike plate to be level with the top of the magnet. Peel off the coating for the double faced tape on the strike plate. Make sure the strike plate is as level as possible and then bring the door in contact with the back of the strike plate, pushing the door against the strike plate and the SLAM GENIE™ snugly. Mark the location of the strike plate with a pencil on the door. Hold the plate against the door with your fingers while you separate the plate from the body of the SLAM GENIE™. If there is no room to hold the strike plate in place, separate the strike plate from the magnet and place the strike plate in the position where you marked the door with the pencil. The double faced tape will hold the strike plate in place until you attach it to the door with the provided screw.

Enjoy many years of trouble free use of your new SLAM GENIE door stop!

You can also view the visual installation guide on our website at www.slamgenie.com/install.html for this and other ways to install.

INSTALL IT - ADJUST IT - FORGET IT