



National One Coat Stucco Association Details

P.O. Box 121325 • Arlington • Texas • 76012 • 888-461-3352 • 817-460-3351 • FAX 817-461-0686

Detail Listing

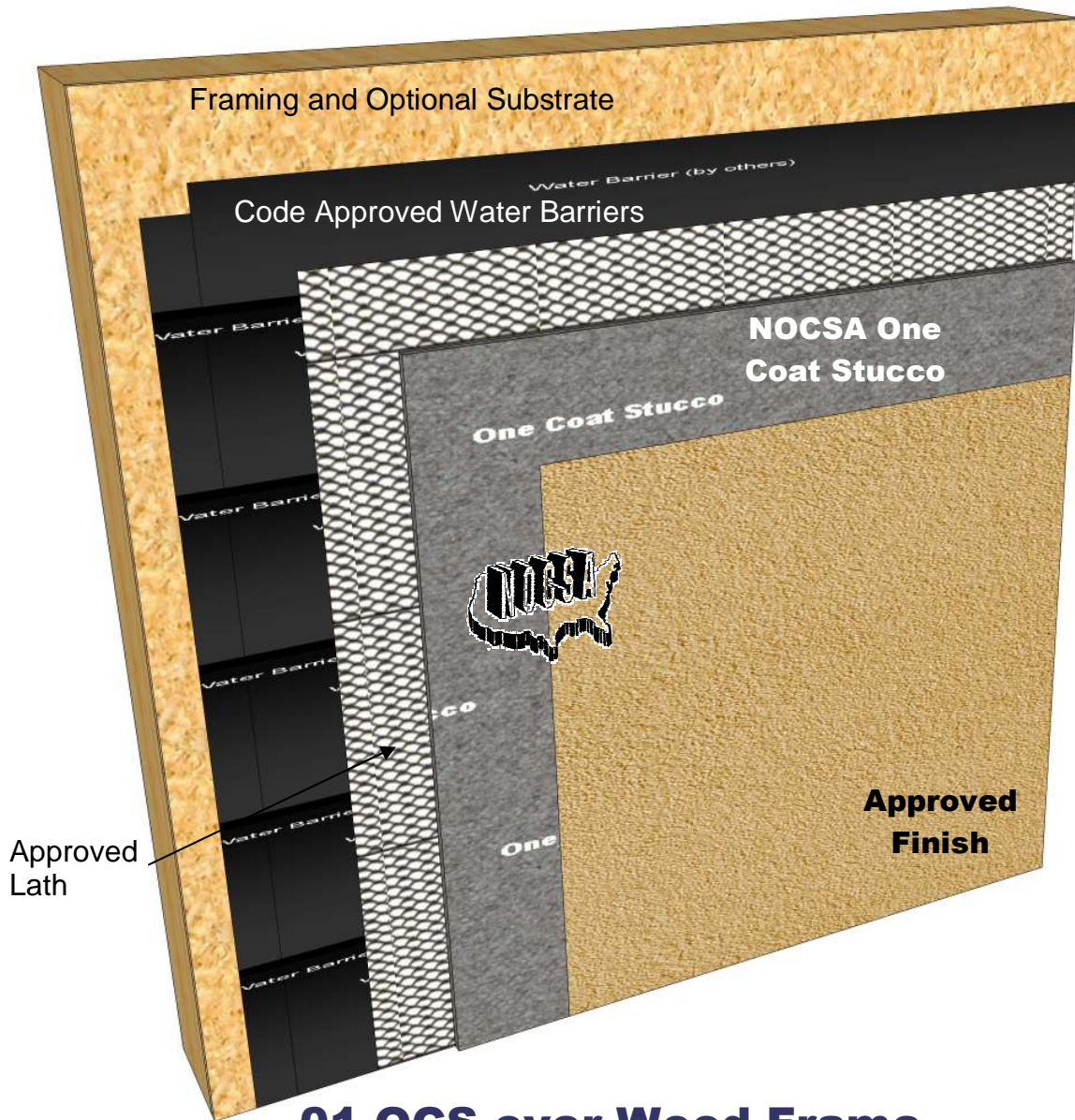
- 01 One Coat Stucco over Wood Frame
- 02 One Coat Stucco over Wood Frame with Insulation
- 03 One Coat Stucco over CMU or Concrete
- 04 One Coat Stucco over CMU with Lath
- 05 One Coat Stucco over Steel Frame
- 06 One Coat Stucco over Steel Frame with Insulation
- 07 Water Barrier Notes
- 08 Lath & Casing
 - 08a Casing Bead & Control Joint Notes
 - 08b Corner Bead & Diagonal Reinforcement Notes
- 09 Control Joint Cross-Section over Sheathing
- 10 Expansion Joint Cross-Section over Masonry
- 11 Flanged Window Head
- 12 Flanged Window Jamb
- 13 Flanged Window Sill
- 14 Storefront Head
- 15 Storefront Jamb
- 16 Storefront Sill
- 17 Downspout Attachment
- 18 Horizontal Control Joint
- 19 Floor Line Expansion Joint
- 20 Floor Line Expansion Joint with Drainage
- 21 Wood to CMU Transition
- 22 Pipe Penetration
- 23 Soffit
- 24 Light Fixture
- 25 Dryer Vent
- 26 Termination at Grade – Weep
- 27 Deck Detail
- 28 Roof Cap
- 29 Roof Flashing
- 30 Roof Flashing – Counterflashed
- 31 Foam Trim
- 32 External Insulation
- 33 Tongue and Groove Insulation Profile

These drawings relay the conceptual conditions of National One Coat Stucco Association (NOCSA) Systems and are not the construction drawings. Ultimately the design and detailing of an entire wall system is the responsibility of a professional. These details will guide the design professional in the use of National One Coat Stucco Association (NOCSA) applications. Refer to specific manufacturer's literature for the final application. National One Coat Stucco Association (NOCSA) disclaims design, warranty or construction intent or responsibility.



National One Coat Stucco Association Details

P.O. Box 121325 • Arlington • Texas • 76012 • 888-461-3352 • 817-460-3351 • FAX 817-461-0686



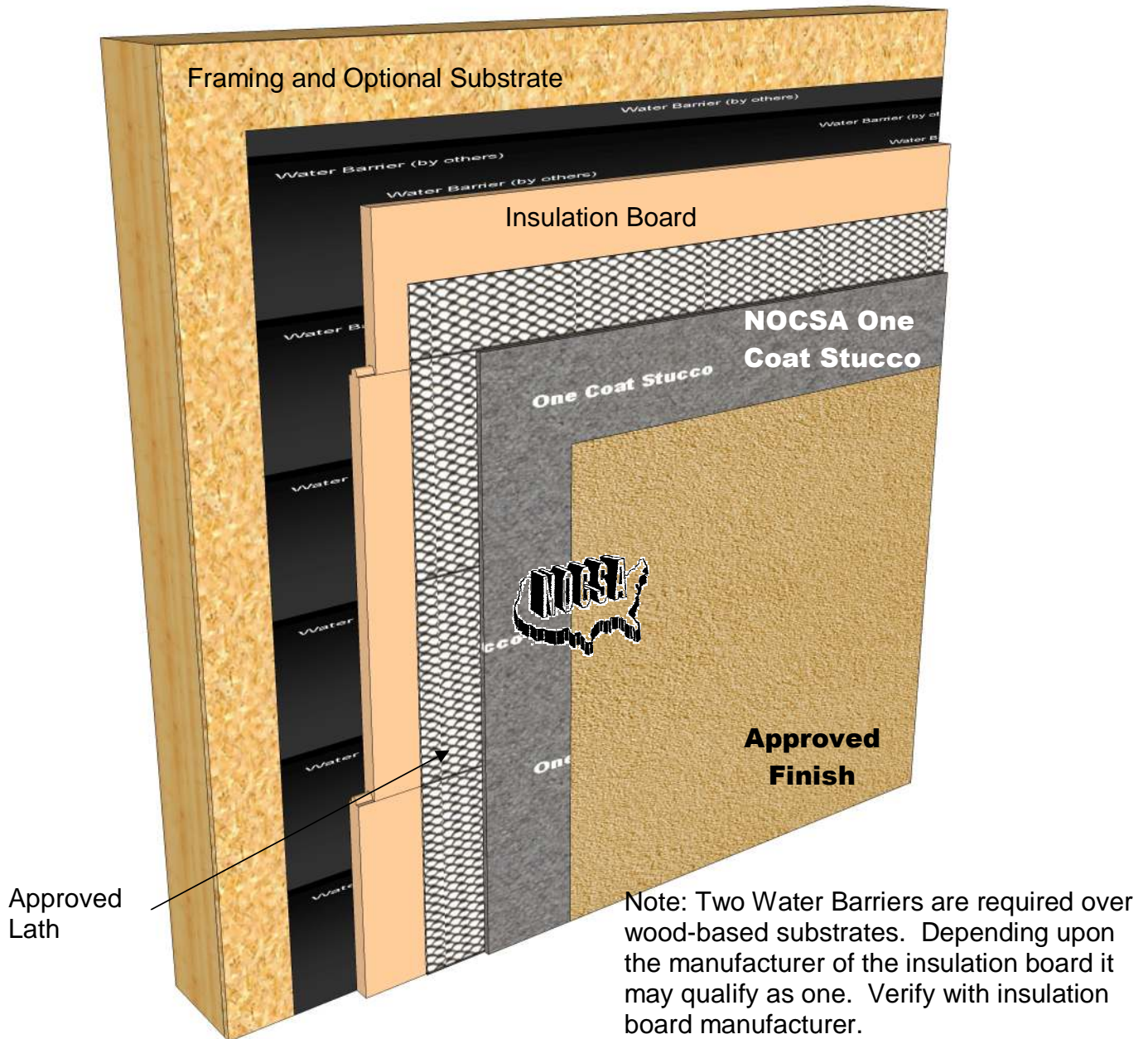
01 OCS over Wood Frame

These drawings relay the conceptual conditions of National One Coat Stucco Association (NOCSA) Systems and are not the construction drawings. Ultimately the design and detailing of an entire wall system is the responsibility of a professional. These details will guide the design professional in the use of National One Coat Stucco Association (NOCSA) applications. Refer to specific manufacturer's literature for the final application. National One Coat Stucco Association (NOCSA) disclaims design, warranty or construction intent or responsibility.



National One Coat Stucco Association Details

P.O. Box 121325 • Arlington • Texas • 76012 • 888-461-3352 • 817-460-3351 • FAX 817-461-0686



02 OCS over Wood Frame with Insulation

These drawings relay the conceptual conditions of National One Coat Stucco Association (NOCSA) Systems and are not the construction drawings. Ultimately the design and detailing of an entire wall system is the responsibility of a professional. These details will guide the design professional in the use of National One Coat Stucco Association (NOCSA) applications. Refer to specific manufacturer's literature for the final application. National One Coat Stucco Association (NOCSA) disclaims design, warranty or construction intent or responsibility.



National One Coat Stucco Association Details

P.O. Box 121325 • Arlington • Texas • 76012 • 888-461-3352 • 817-460-3351 • FAX 817-461-0686



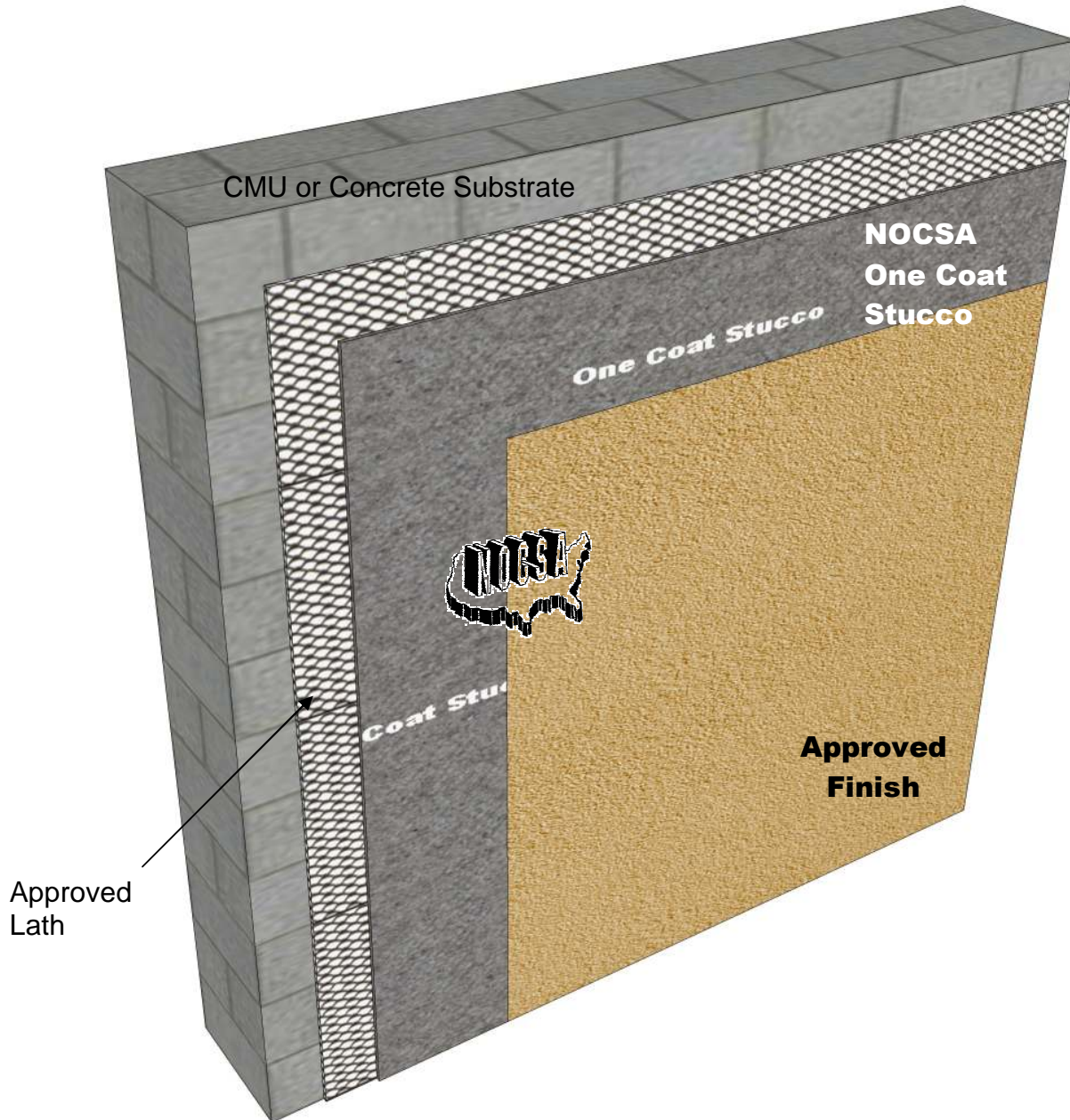
03 OCS over CMU or Concrete

These drawings relay the conceptual conditions of National One Coat Stucco Association (NOCSA) Systems and are not the construction drawings. Ultimately the design and detailing of an entire wall system is the responsibility of a professional. These details will guide the design professional in the use of National One Coat Stucco Association (NOCSA) applications. Refer to specific manufacturer's literature for the final application. National One Coat Stucco Association (NOCSA) disclaims design, warranty or construction intent or responsibility.



National One Coat Stucco Association Details

P.O. Box 121325 • Arlington • Texas • 76012 • 888-461-3352 • 817-460-3351 • FAX 817-461-0686



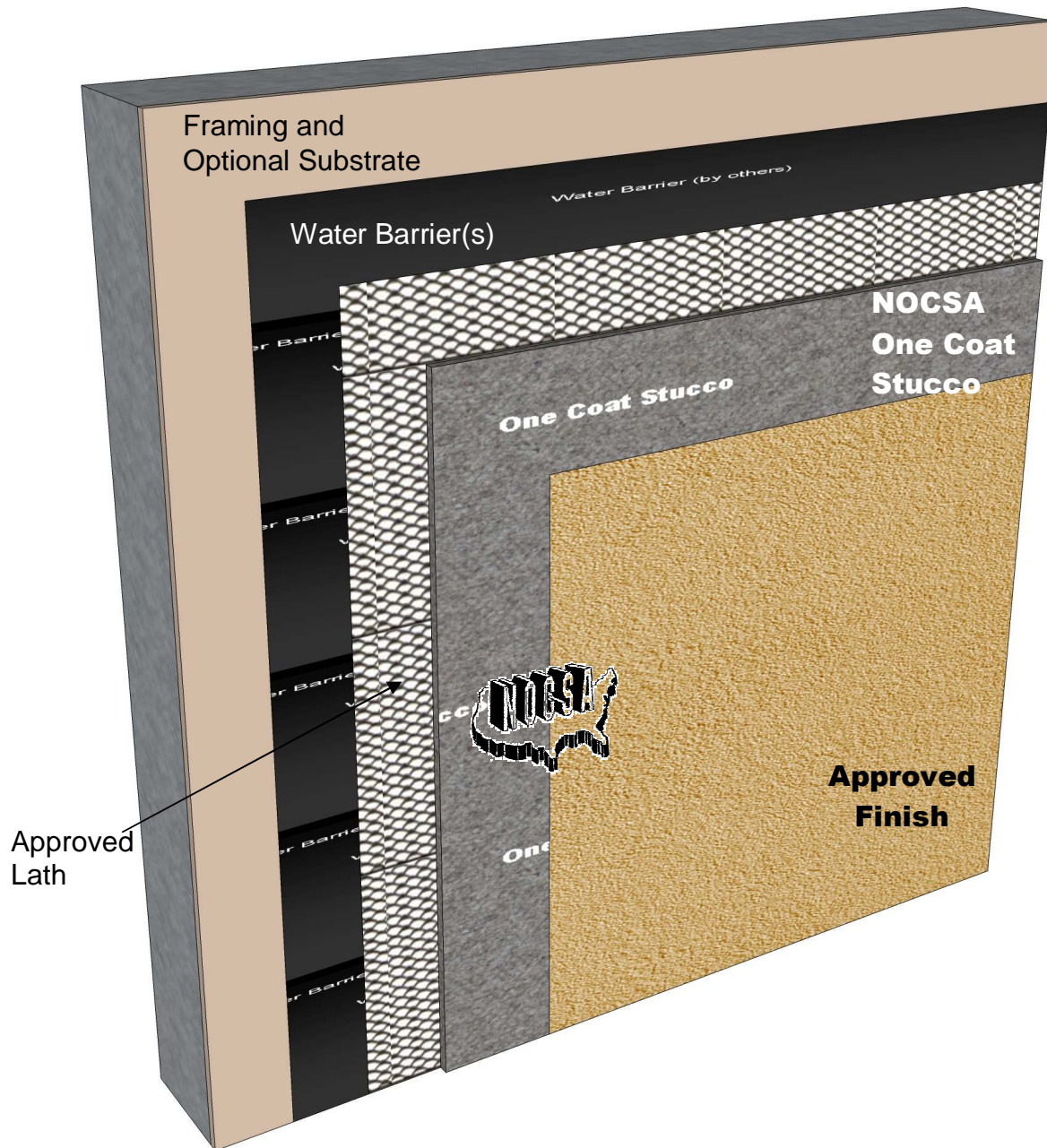
04 OCS over CMU with Approved Lath

These drawings relay the conceptual conditions of National One Coat Stucco Association (NOCSA) Systems and are not the construction drawings. Ultimately the design and detailing of an entire wall system is the responsibility of a professional. These details will guide the design professional in the use of National One Coat Stucco Association (NOCSA) applications. Refer to specific manufacturer's literature for the final application. National One Coat Stucco Association (NOCSA) disclaims design, warranty or construction intent or responsibility.



National One Coat Stucco Association Details

P.O. Box 121325 • Arlington • Texas • 76012 • 888-461-3352 • 817-460-3351 • FAX 817-461-0686



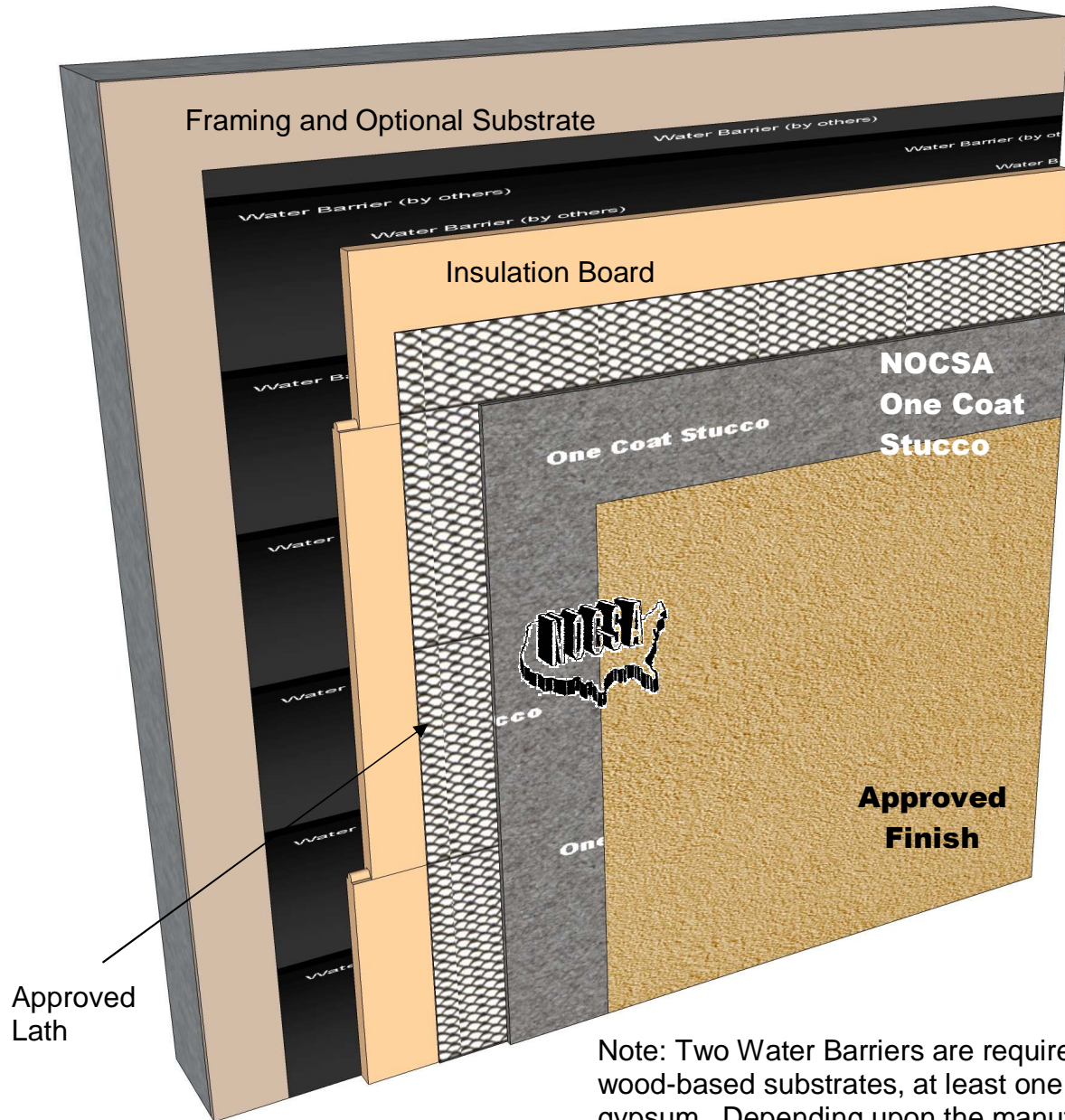
05 OCS over Steel Framing

These drawings relay the conceptual conditions of National One Coat Stucco Association (NOCSA) Systems and are not the construction drawings. Ultimately the design and detailing of an entire wall system is the responsibility of a professional. These details will guide the design professional in the use of National One Coat Stucco Association (NOCSA) applications. Refer to specific manufacturer's literature for the final application. National One Coat Stucco Association (NOCSA) disclaims design, warranty or construction intent or responsibility.



National One Coat Stucco Association Details

P.O. Box 121325 • Arlington • Texas • 76012 • 888-461-3352 • 817-460-3351 • FAX 817-461-0686



Note: Two Water Barriers are required over wood-based substrates, at least one over gypsum. Depending upon the manufacturer of the insulation board it may qualify as one. Verify with insulation board manufacturer.

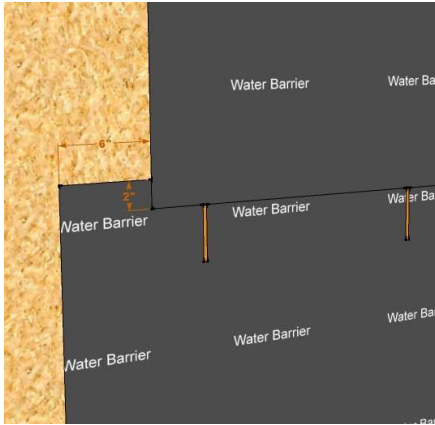
06 OCS over Steel Framing with Insulation

These drawings relay the conceptual conditions of National One Coat Stucco Association (NOCSA) Systems and are not the construction drawings. Ultimately the design and detailing of an entire wall system is the responsibility of a professional. These details will guide the design professional in the use of National One Coat Stucco Association (NOCSA) applications. Refer to specific manufacturer's literature for the final application. National One Coat Stucco Association (NOCSA) disclaims design, warranty or construction intent or responsibility.



National One Coat Stucco Association Details

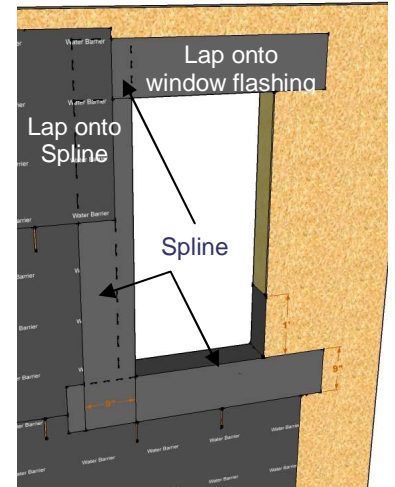
P.O. Box 121325 • Arlington • Texas • 76012 • 888-461-3352 • 817-460-3351 • FAX 817-461-0686



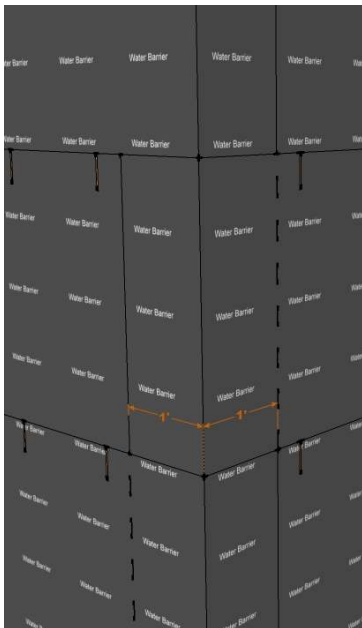
Lap felt 2" (50 mm) min. horizontally, 6" (152 mm) vertically
Hint: mark framing locations when installing felt



2-water barriers required over wood substrates



Lap felt spline as noted. If using peel and stick follow manufacturer's instructions. Always follow window manufacturer's instructions



Lap corners 12" (305 mm) each side

Verify detailing with water barrier manufacturer

Minimum requirements: Grade D or ASTM D226, Type I



Lap water barriers onto weep screenshot (shown) or solid metal casing bead with weep holes. Place WRB behind expanded metal casing bead. Lap accessories 1" (25 mm) min. onto foundation and keep 4" (102 mm) above grade

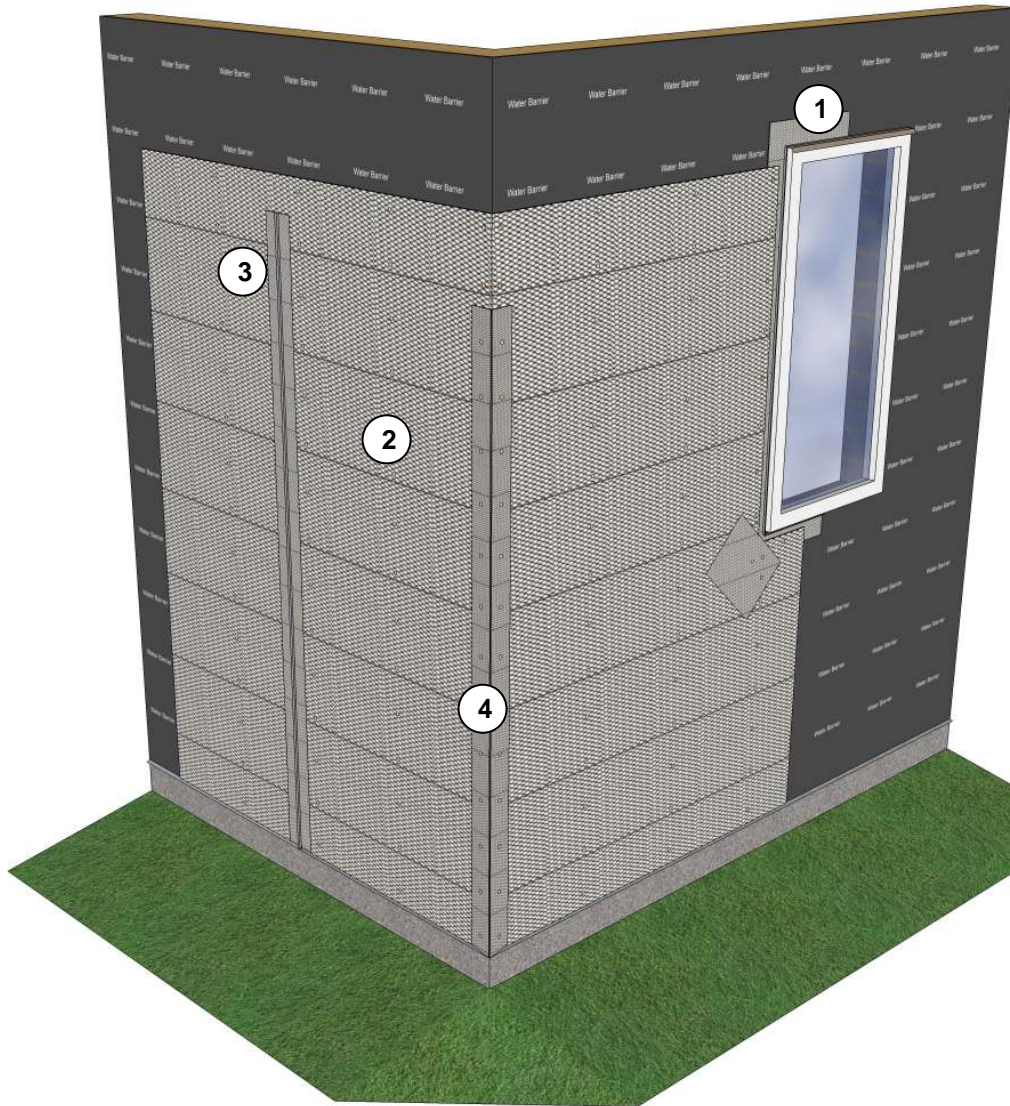
07 Water Barrier Notes

These drawings relay the conceptual conditions of National One Coat Stucco Association (NOCSA) Systems and are not the construction drawings. Ultimately the design and detailing of an entire wall system is the responsibility of a professional. These details will guide the design professional in the use of National One Coat Stucco Association (NOCSA) applications. Refer to specific manufacturer's literature for the final application. National One Coat Stucco Association (NOCSA) disclaims design, warranty or construction intent or responsibility.



National One Coat Stucco Association Details

P.O. Box 121325 • Arlington • Texas • 76012 • 888-461-3352 • 817-460-3351 • FAX 817-461-0686



General--install metal lath with the long dimension at right angles to structural framing. Terminate lath at building expansion joints.

Seams/overlaps – overlap side seams a minimum of ½ inch (13 mm) and end seams a minimum 1-inch (25 mm). Stagger end seams. Overlap casing beads and expansion joints minimum 1 inch (25 mm) over the narrow wing accessories and 2 inches (50 mm) over expanded flange accessories.

Attachment--fasten securely through sheathing into structural framing at no more than 7 inches (178 mm) on center maximum vertically and 16-24 inches (41-61 cm) on center horizontally*. Wire tie horizontal laps at 8 inches (204 mm) on center at: side laps, accessory overlaps, and where end laps occur between supports.

Note: The type fastener selected its layout and pullout or withdrawal value from the supporting construction must be verified and approved by the project engineer/architect with respect to design wind load and local building code requirements).

Follow manufacturer's instructions for alternative equivalent reinforcement materials such as non-metallic lath.

- With water barrier installed over weep screed:
1. Attach casing Beads (verify with manufacturer)
 2. Install Lath
 3. Attach Control Joints
 4. Set Corner Beads
 5. Tie lap joints in lath, casing beads and control joints as needed.

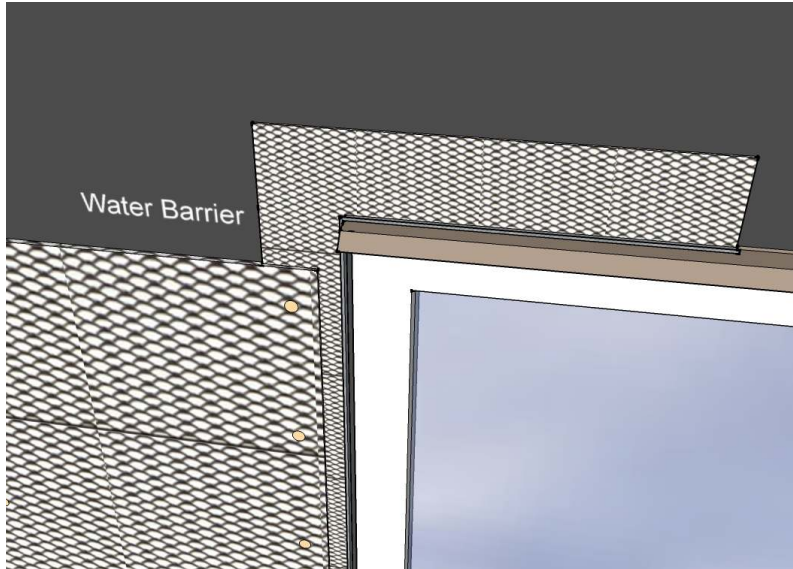
08 Lath & Casing

These drawings relay the conceptual conditions of National One Coat Stucco Association (NOCSA) Systems and are not the construction drawings. Ultimately the design and detailing of an entire wall system is the responsibility of a professional. These details will guide the design professional in the use of National One Coat Stucco Association (NOCSA) applications. Refer to specific manufacturer's literature for the final application. National One Coat Stucco Association (NOCSA) disclaims design, warranty or construction intent or responsibility.



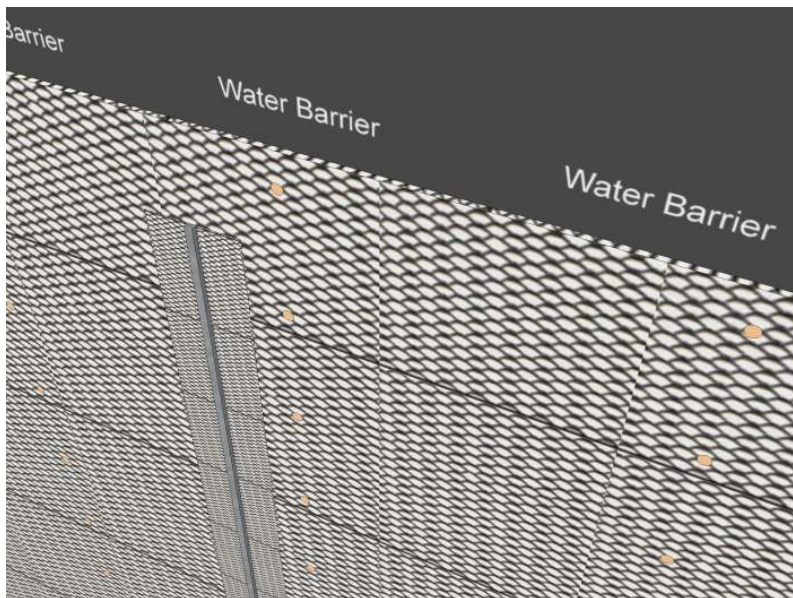
National One Coat Stucco Association Details

P.O. Box 121325 • Arlington • Texas • 76012 • 888-461-3352 • 817-460-3351 • FAX 817-461-0686



Casing Bead and Expansion Joint Installation

Install casing beads at stucco terminations—doors, windows and other through wall penetrations according to manufacturers instructions. Install expansion joints (or back-to-back casing beads) at building expansion joints, where the stucco is to be installed over dissimilar construction or substrates, at changes in building height, at floor lines, columns, and cantilevered areas. Install full accessory pieces where possible and avoid small pieces. Seal adjoining pieces by embedding ends in sealant. Abut horizontal into vertical joint accessories. Attach at 6-inch (152 mm) centers into framing with appropriate fasteners.



Control Joint Installation

Follow manufacturer recommendations. Typically control joints are placed every 144 ft² (13.4 m²) for walls and 100 ft² (9.3 m²) maximum for ceilings, located by the designer and indicated on the construction documents. Attach in place to insure proper alignment during the stucco application. Wire tie control joints to lath at 6 inches (152 mm) on center if framing members aren't present under the accessory.

Seal any exposed ends and edges preferably by setting them in sealant during installation to prevent water entry.

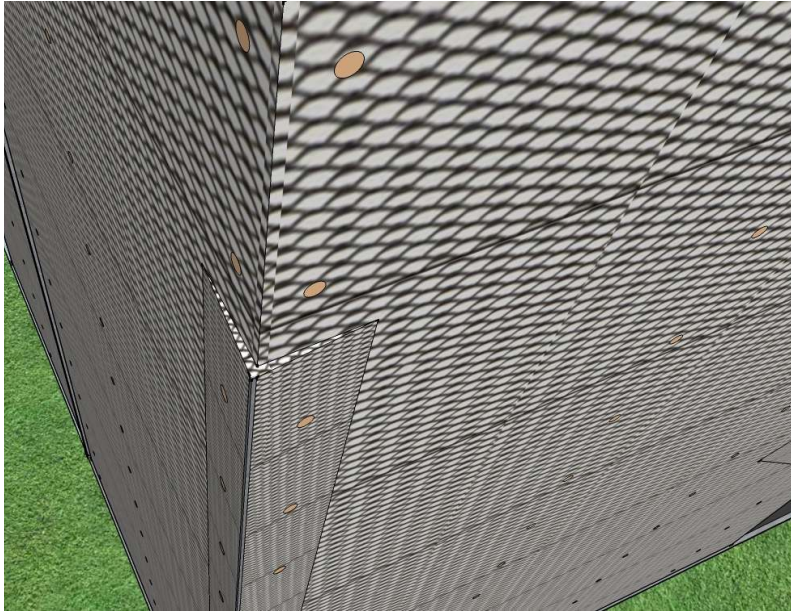
8a Casing Bead & Expansion Joint Notes

These drawings relay the conceptual conditions of National One Coat Stucco Association (NOCSA) Systems and are not the construction drawings. Ultimately the design and detailing of an entire wall system is the responsibility of a professional. These details will guide the design professional in the use of National One Coat Stucco Association (NOCSA) applications. Refer to specific manufacturer's literature for the final application. National One Coat Stucco Association (NOCSA) disclaims design, warranty or construction intent or responsibility.



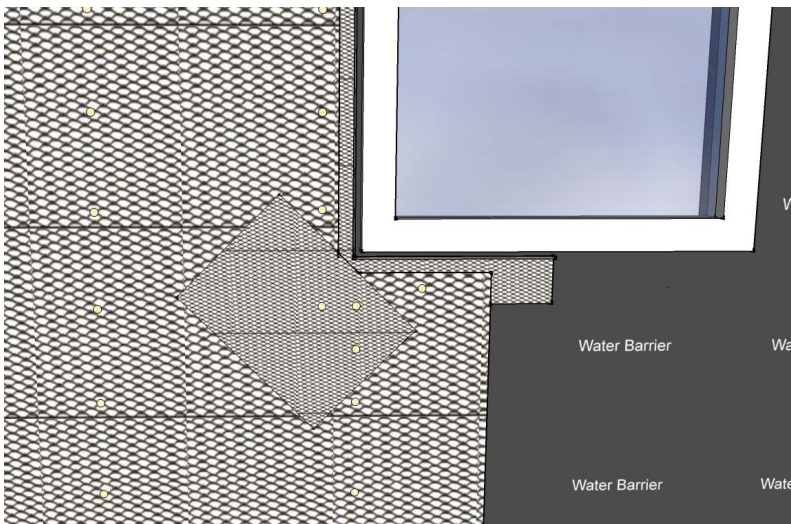
National One Coat Stucco Association Details

P.O. Box 121325 • Arlington • Texas • 76012 • 888-461-3352 • 817-460-3351 • FAX 817-461-0686



Inside and Outside Corners

Install corner lath at inside corners and corner bead at outside corners over lath. Attach through lath into framing at 6 inches (152 mm) on center with appropriate fasteners.



Diagonal Reinforcement

Apply Striplath, minimum 4" x 12" (102 mm x 305 mm), in type and weights of selected lath at casing bead corners.

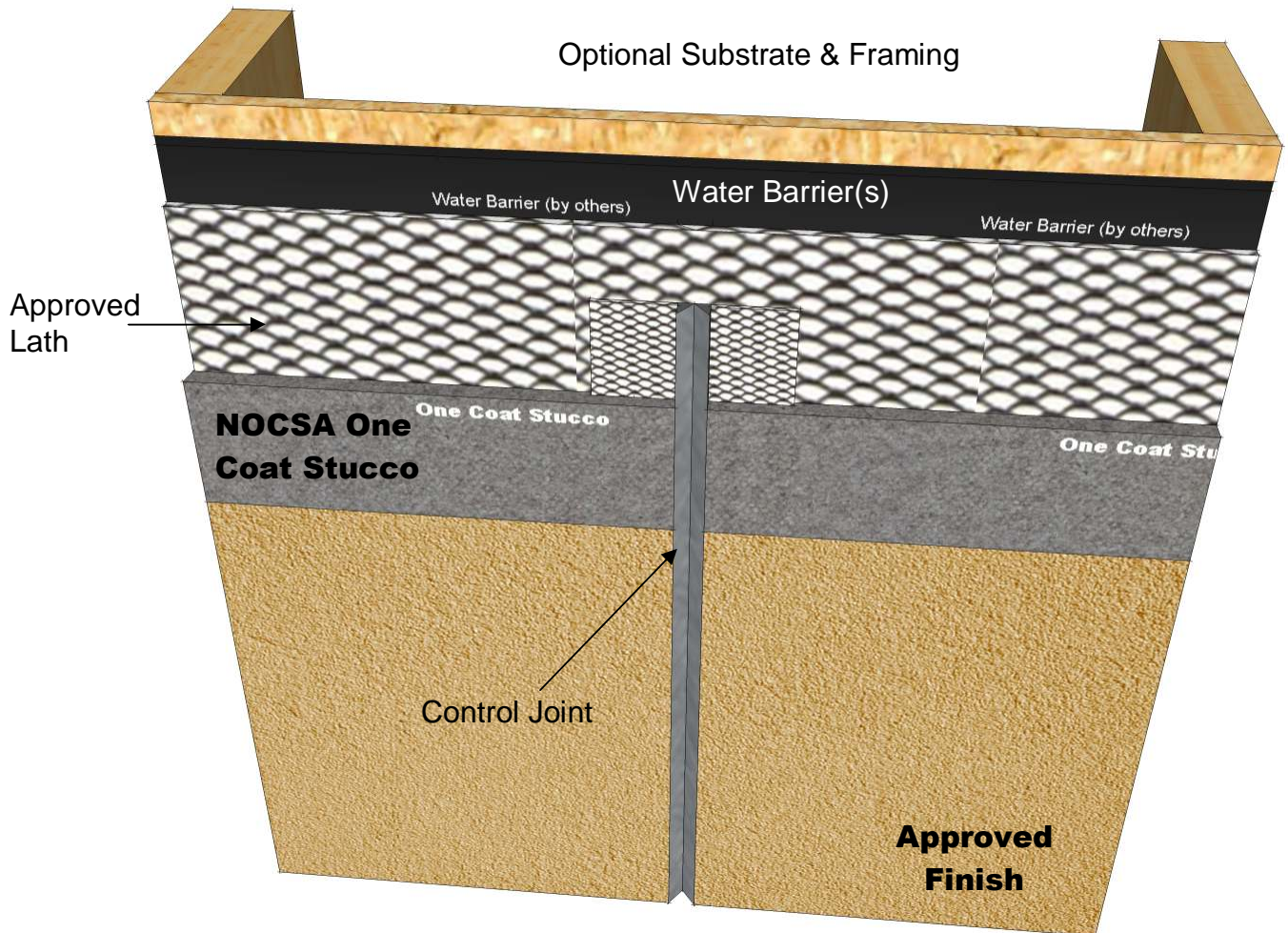
8b Corner Bead & Diagonal Reinforcement Notes

These drawings relay the conceptual conditions of National One Coat Stucco Association (NOCSA) Systems and are not the construction drawings. Ultimately the design and detailing of an entire wall system is the responsibility of a professional. These details will guide the design professional in the use of National One Coat Stucco Association (NOCSA) applications. Refer to specific manufacturer's literature for the final application. National One Coat Stucco Association (NOCSA) disclaims design, warranty or construction intent or responsibility.



National One Coat Stucco Association Details

P.O. Box 121325 • Arlington • Texas • 76012 • 888-461-3352 • 817-460-3351 • FAX 817-461-0686



Notes:

Control joints are required and should be located by the designer at the following locations on the construction documents:

- Every 144 sf (13.4 sm) maximum or as recommended by the manufacturer.
- One dimension shall not exceed 2-1/2 times the other dimension.
- At all dissimilar substrate/sheathing transitions.
- Possibly off corners of windows/doors.
- Increase control joint requirements where thicker stucco or special structural conditions exist.

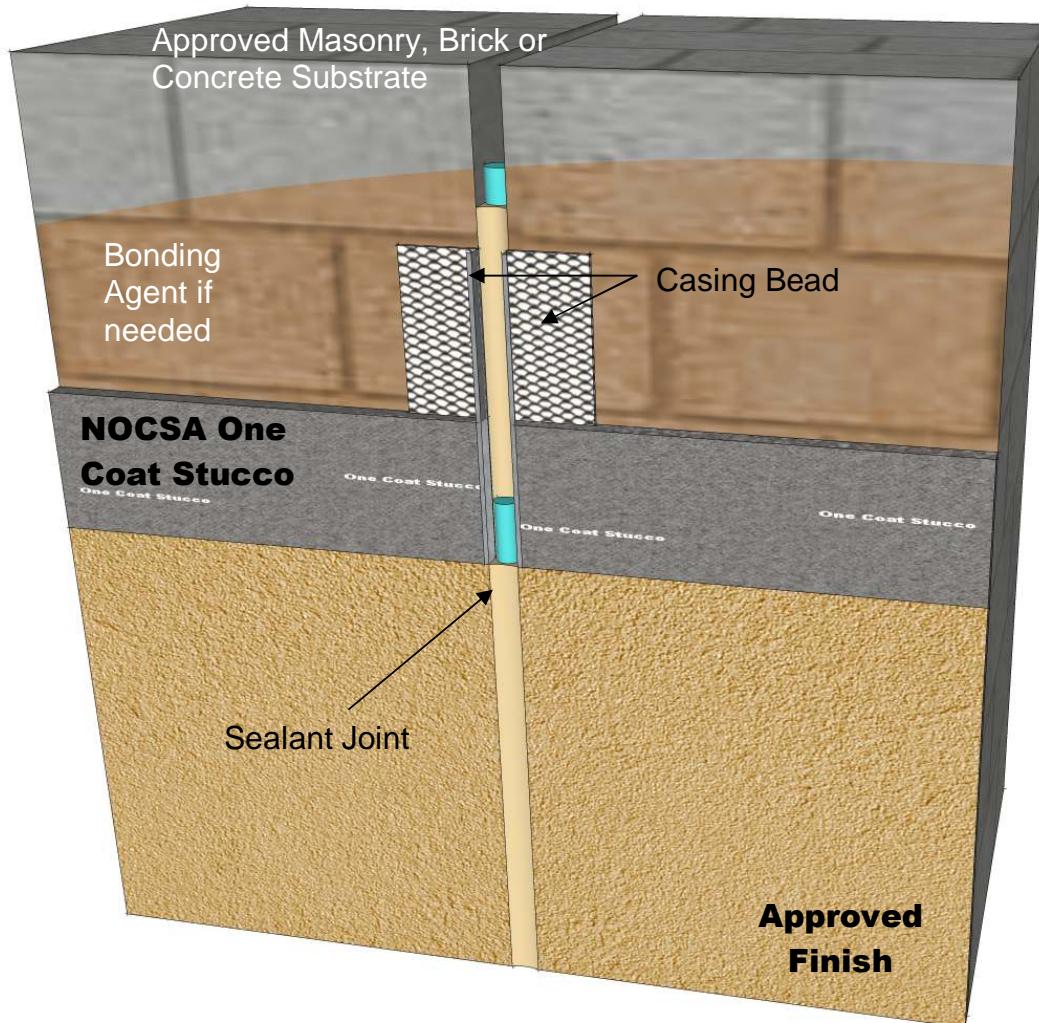
09 Control Joint Cross Section over Sheathing

These drawings relay the conceptual conditions of National One Coat Stucco Association (NOCSA) Systems and are not the construction drawings. Ultimately the design and detailing of an entire wall system is the responsibility of a professional. These details will guide the design professional in the use of National One Coat Stucco Association (NOCSA) applications. Refer to specific manufacturer's literature for the final application. National One Coat Stucco Association (NOCSA) disclaims design, warranty or construction intent or responsibility.



National One Coat Stucco Association Details

P.O. Box 121325 • Arlington • Texas • 76012 • 888-461-3352 • 817-460-3351 • FAX 817-461-0686



Notes:

Expansion joints are required and should be located by the designer at the following locations on the construction documents:

- At control joints in the supporting structure.
- At all dissimilar substrate transitions.

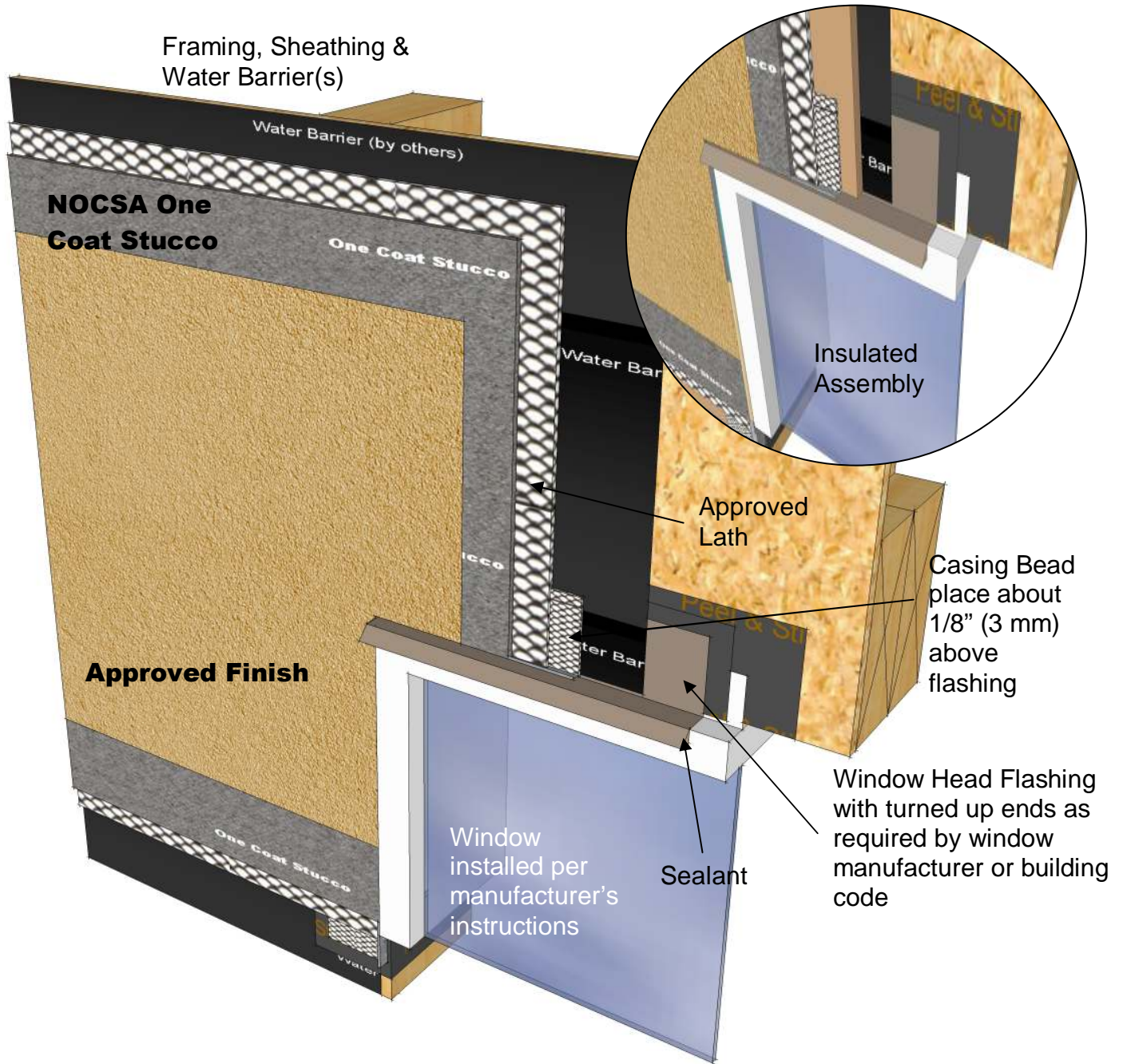
10 Expansion Joint Cross Section over Masonry

These drawings relay the conceptual conditions of National One Coat Stucco Association (NOCSA) Systems and are not the construction drawings. Ultimately the design and detailing of an entire wall system is the responsibility of a professional. These details will guide the design professional in the use of National One Coat Stucco Association (NOCSA) applications. Refer to specific manufacturer's literature for the final application. National One Coat Stucco Association (NOCSA) disclaims design, warranty or construction intent or responsibility.



National One Coat Stucco Association Details

P.O. Box 121325 • Arlington • Texas • 76012 • 888-461-3352 • 817-460-3351 • FAX 817-461-0686



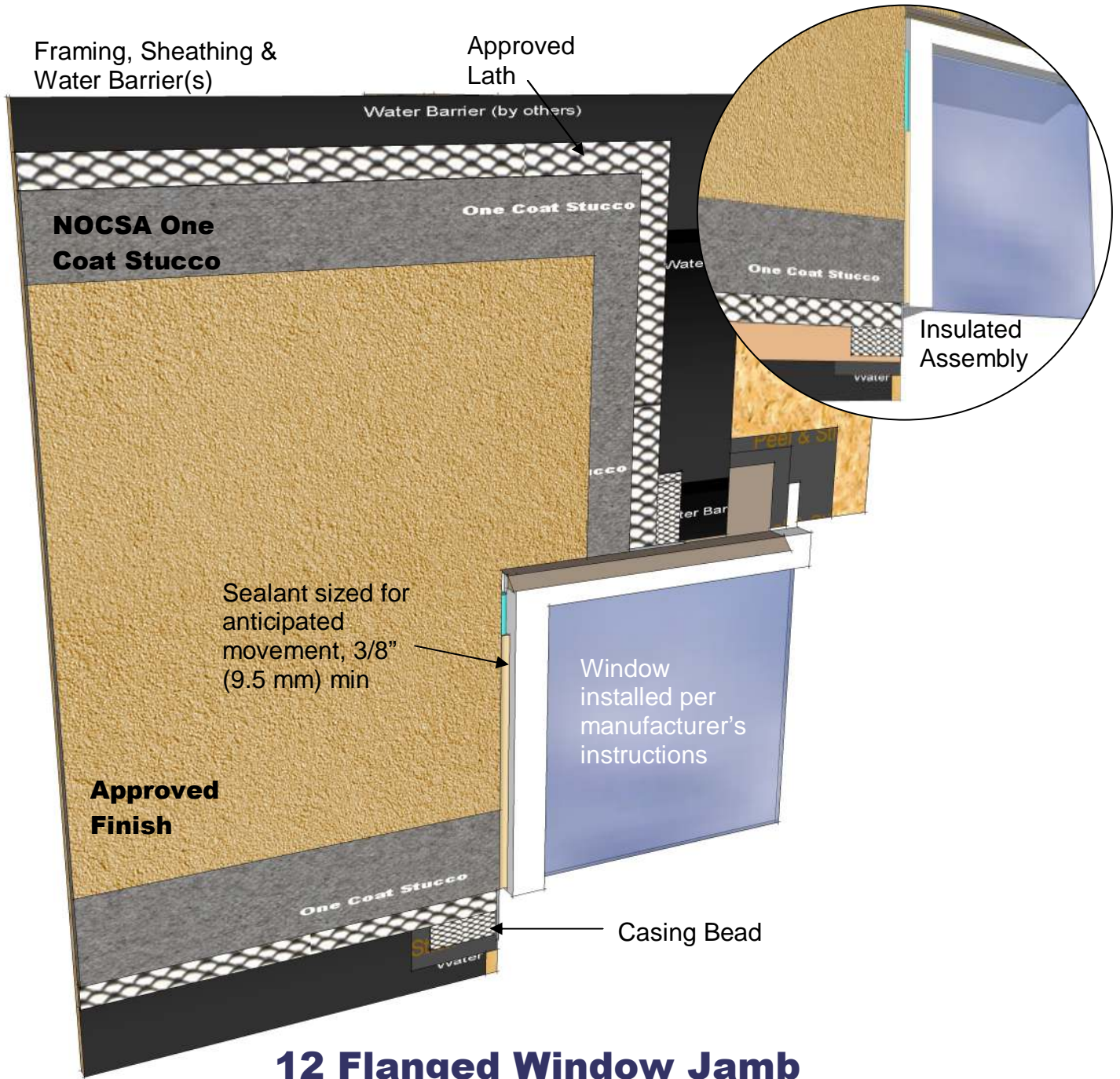
11 Flanged Window Head

These drawings relay the conceptual conditions of National One Coat Stucco Association (NOCSA) Systems and are not the construction drawings. Ultimately the design and detailing of an entire wall system is the responsibility of a professional. These details will guide the design professional in the use of National One Coat Stucco Association (NOCSA) applications. Refer to specific manufacturer's literature for the final application. National One Coat Stucco Association (NOCSA) disclaims design, warranty or construction intent or responsibility.



National One Coat Stucco Association Details

P.O. Box 121325 • Arlington • Texas • 76012 • 888-461-3352 • 817-460-3351 • FAX 817-461-0686

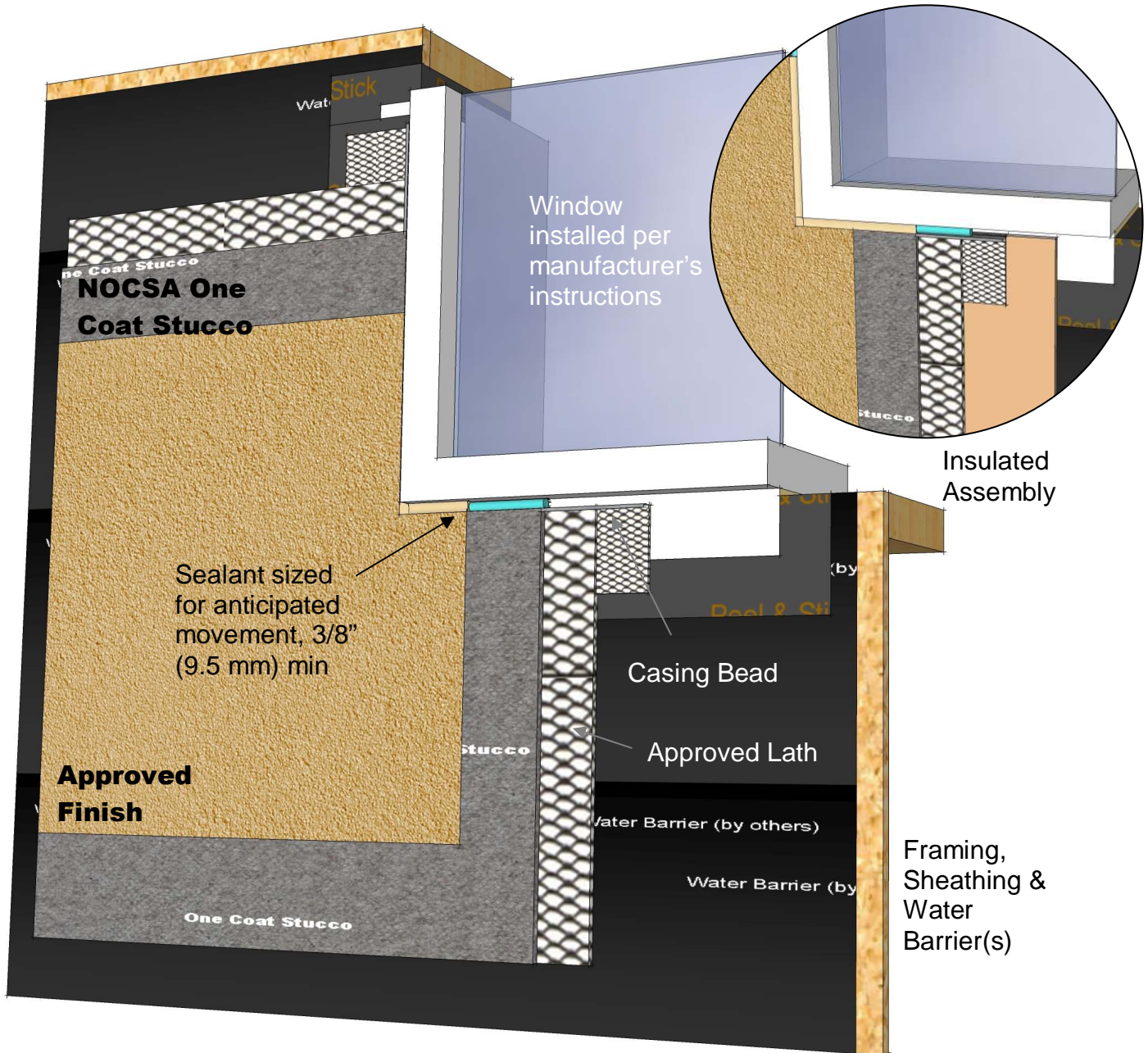


These drawings relay the conceptual conditions of National One Coat Stucco Association (NOCSA) Systems and are not the construction drawings. Ultimately the design and detailing of an entire wall system is the responsibility of a professional. These details will guide the design professional in the use of National One Coat Stucco Association (NOCSA) applications. Refer to specific manufacturer's literature for the final application. National One Coat Stucco Association (NOCSA) disclaims design, warranty or construction intent or responsibility.



National One Coat Stucco Association Details

P.O. Box 121325 • Arlington • Texas • 76012 • 888-461-3352 • 817-460-3351 • FAX 817-461-0686



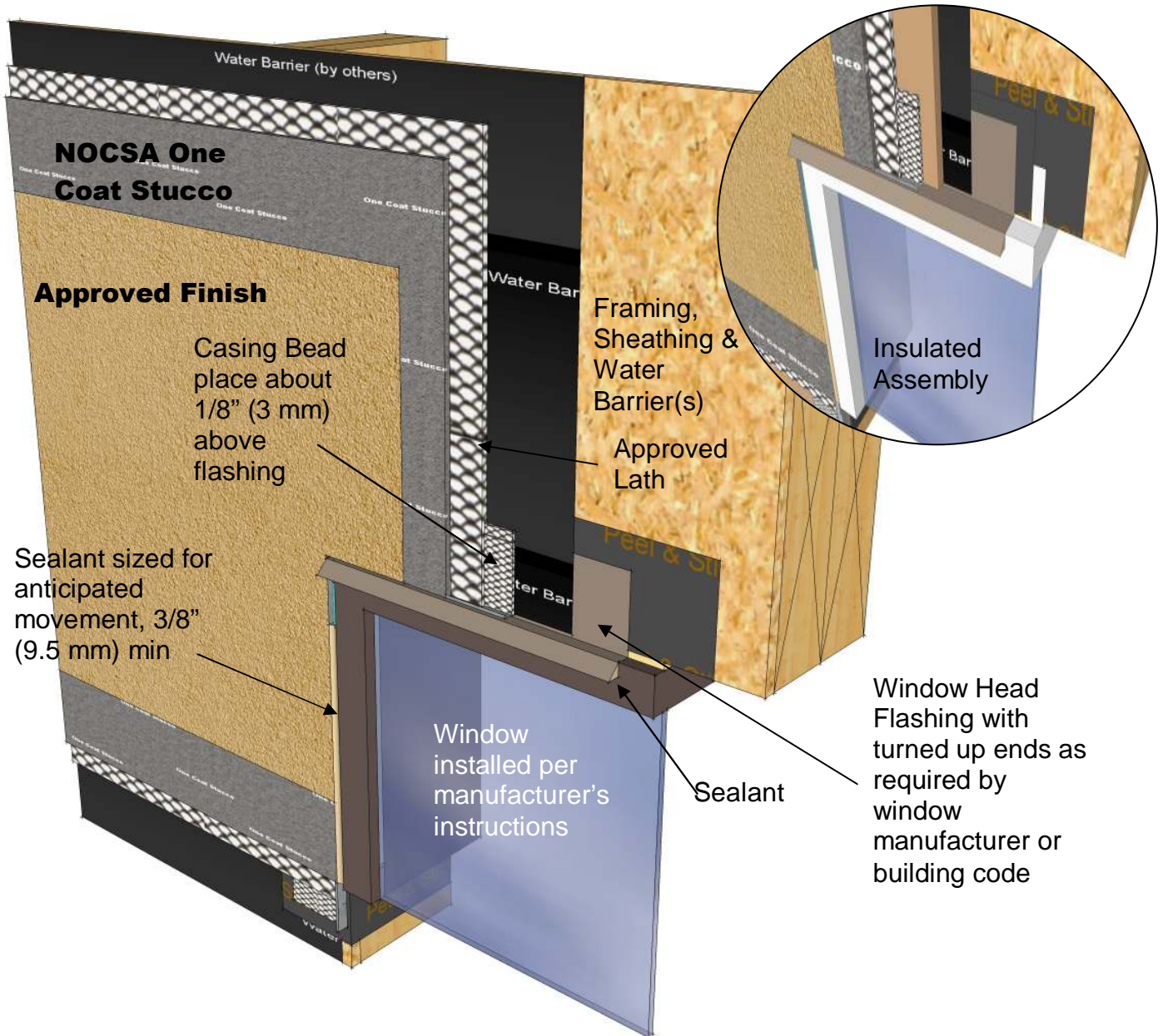
13 Flanged Window Sill

These drawings relay the conceptual conditions of National One Coat Stucco Association (NOCSA) Systems and are not the construction drawings. Ultimately the design and detailing of an entire wall system is the responsibility of a professional. These details will guide the design professional in the use of National One Coat Stucco Association (NOCSA) applications. Refer to specific manufacturer's literature for the final application. National One Coat Stucco Association (NOCSA) disclaims design, warranty or construction intent or responsibility.



National One Coat Stucco Association Details

P.O. Box 121325 • Arlington • Texas • 76012 • 888-461-3352 • 817-460-3351 • FAX 817-461-0686



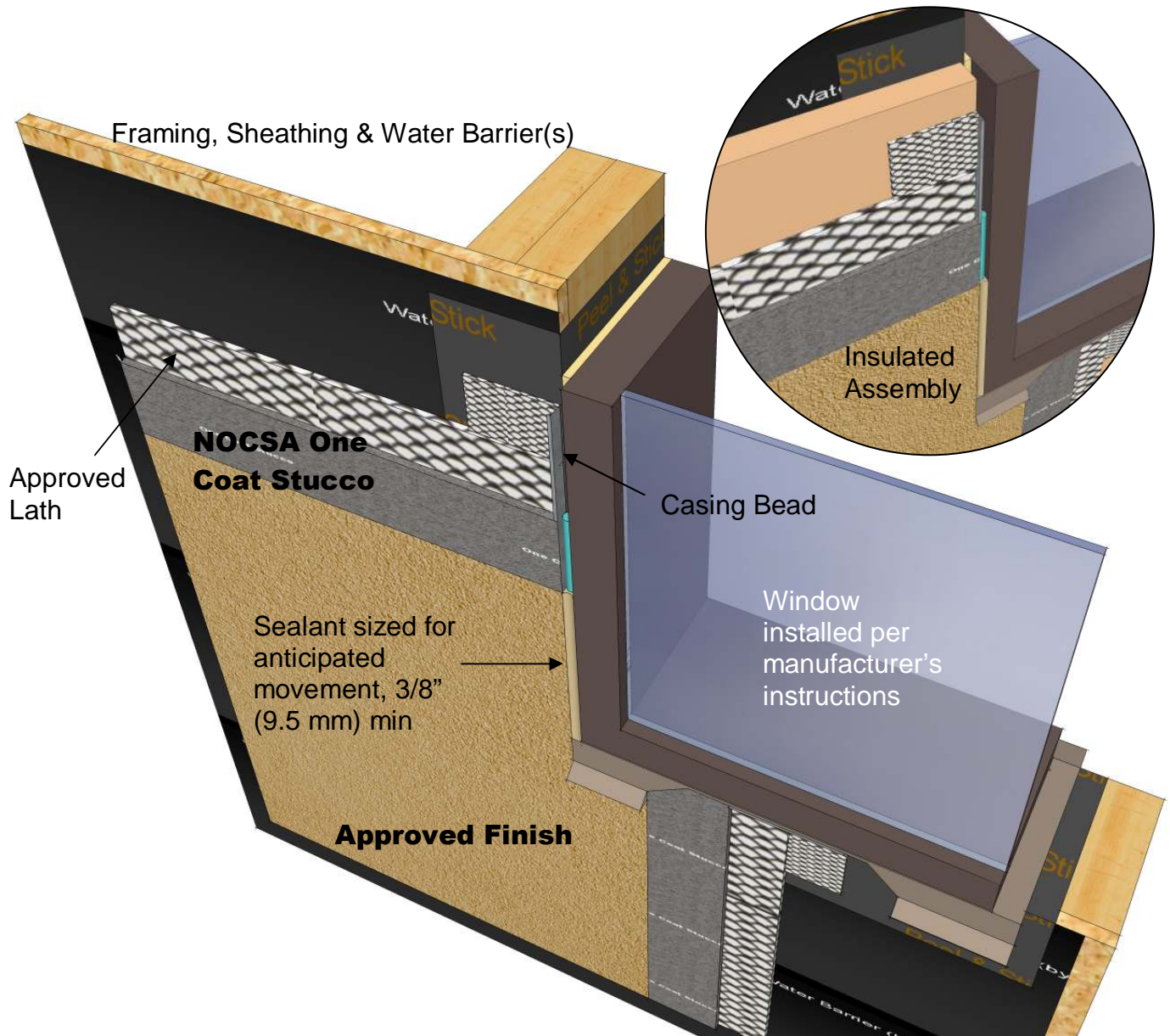
14 Storefront Window Head

These drawings relay the conceptual conditions of National One Coat Stucco Association (NOCSA) Systems and are not the construction drawings. Ultimately the design and detailing of an entire wall system is the responsibility of a professional. These details will guide the design professional in the use of National One Coat Stucco Association (NOCSA) applications. Refer to specific manufacturer's literature for the final application. National One Coat Stucco Association (NOCSA) disclaims design, warranty or construction intent or responsibility.



National One Coat Stucco Association Details

P.O. Box 121325 • Arlington • Texas • 76012 • 888-461-3352 • 817-460-3351 • FAX 817-461-0686



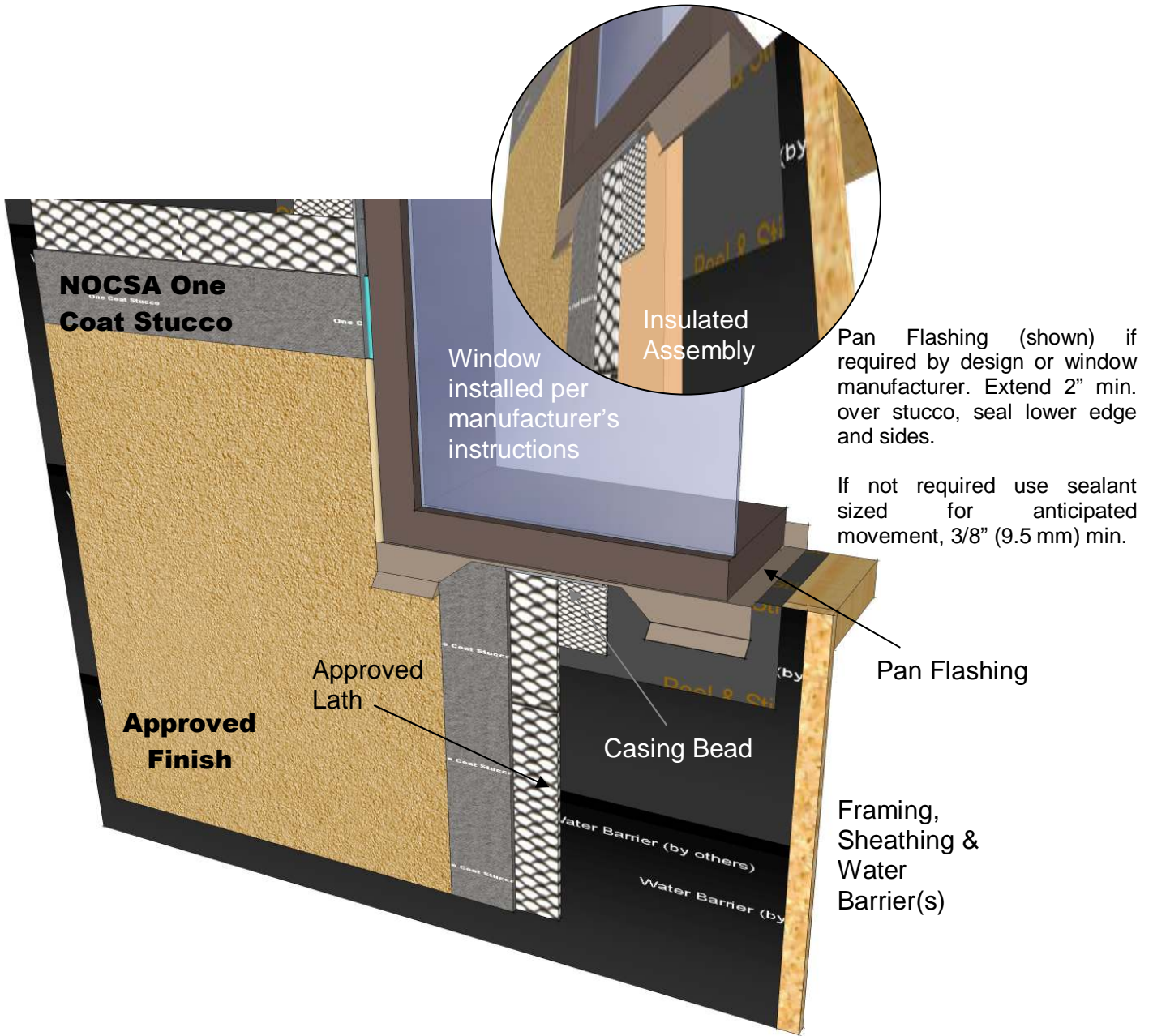
15 Storefront Window Jamb

These drawings relay the conceptual conditions of National One Coat Stucco Association (NOCSA) Systems and are not the construction drawings. Ultimately the design and detailing of an entire wall system is the responsibility of a professional. These details will guide the design professional in the use of National One Coat Stucco Association (NOCSA) applications. Refer to specific manufacturer's literature for the final application. National One Coat Stucco Association (NOCSA) disclaims design, warranty or construction intent or responsibility.



National One Coat Stucco Association Details

P.O. Box 121325 • Arlington • Texas • 76012 • 888-461-3352 • 817-460-3351 • FAX 817-461-0686



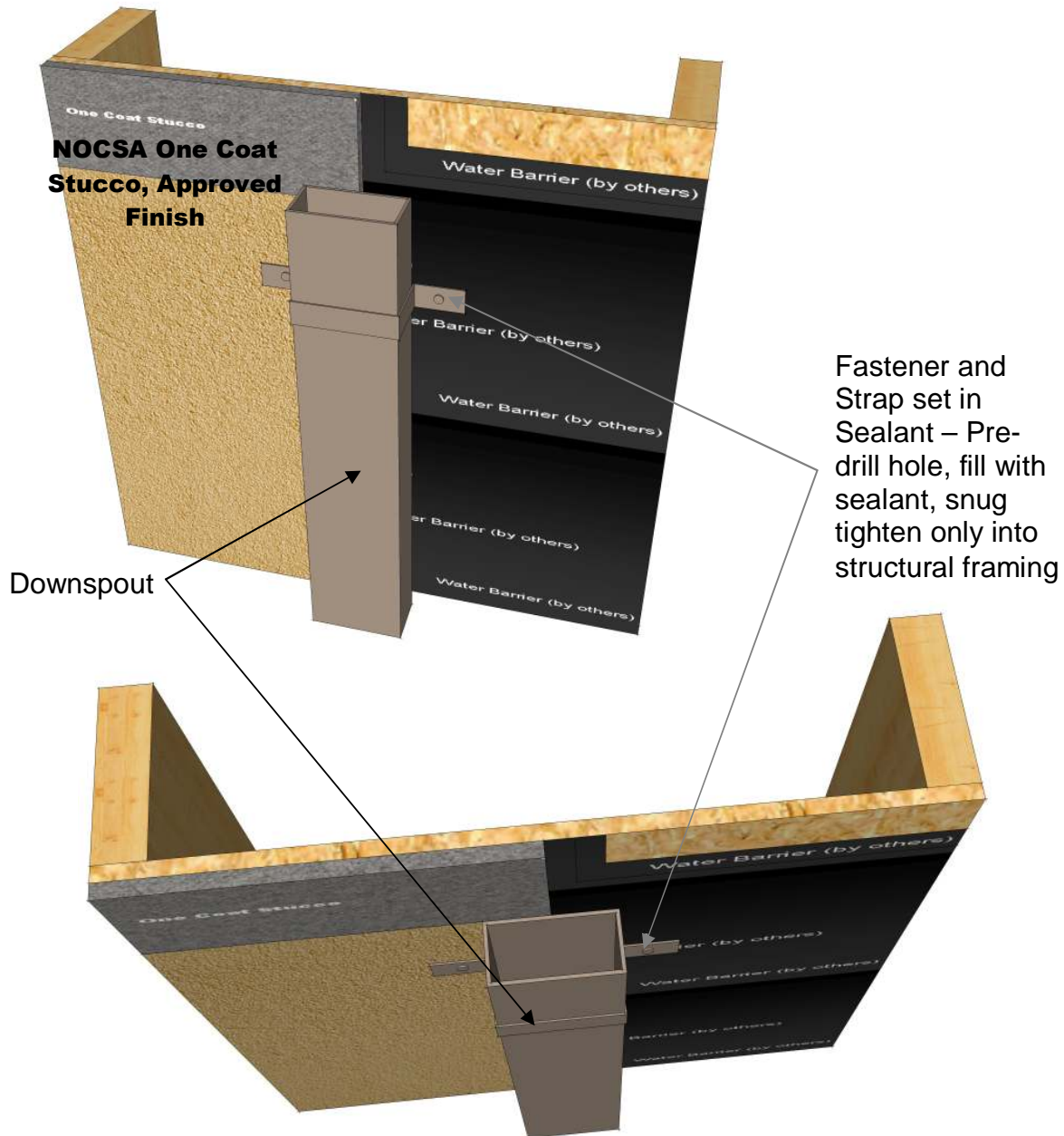
16 Storefront Window Sill

These drawings relay the conceptual conditions of National One Coat Stucco Association (NOCSA) Systems and are not the construction drawings. Ultimately the design and detailing of an entire wall system is the responsibility of a professional. These details will guide the design professional in the use of National One Coat Stucco Association (NOCSA) applications. Refer to specific manufacturer's literature for the final application. National One Coat Stucco Association (NOCSA) disclaims design, warranty or construction intent or responsibility.



National One Coat Stucco Association Details

P.O. Box 121325 • Arlington • Texas • 76012 • 888-461-3352 • 817-460-3351 • FAX 817-461-0686



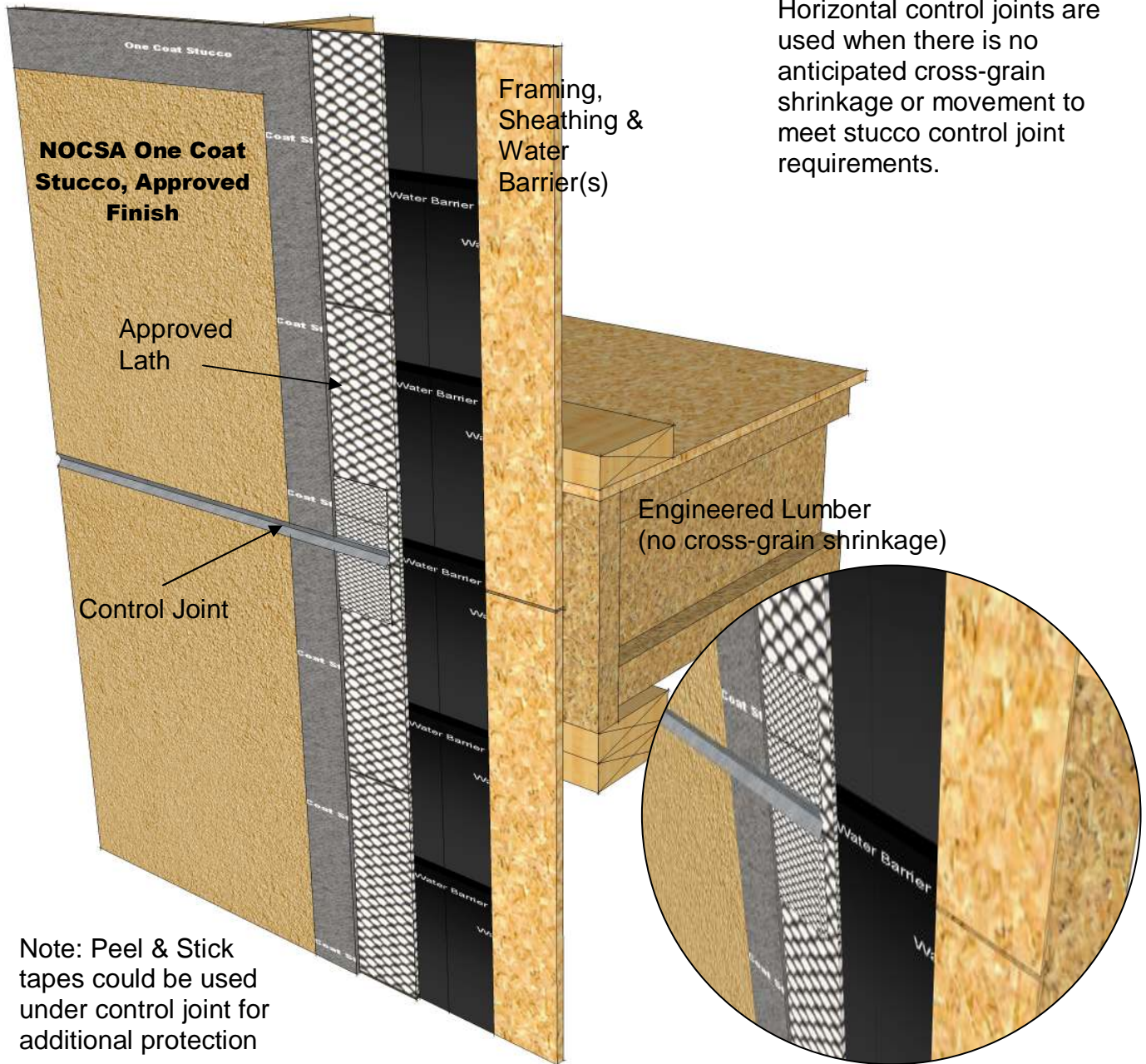
17 Downspout Attachment

These drawings relay the conceptual conditions of National One Coat Stucco Association (NOCSA) Systems and are not the construction drawings. Ultimately the design and detailing of an entire wall system is the responsibility of a professional. These details will guide the design professional in the use of National One Coat Stucco Association (NOCSA) applications. Refer to specific manufacturer's literature for the final application. National One Coat Stucco Association (NOCSA) disclaims design, warranty or construction intent or responsibility.



National One Coat Stucco Association Details

P.O. Box 121325 • Arlington • Texas • 76012 • 888-461-3352 • 817-460-3351 • FAX 817-461-0686



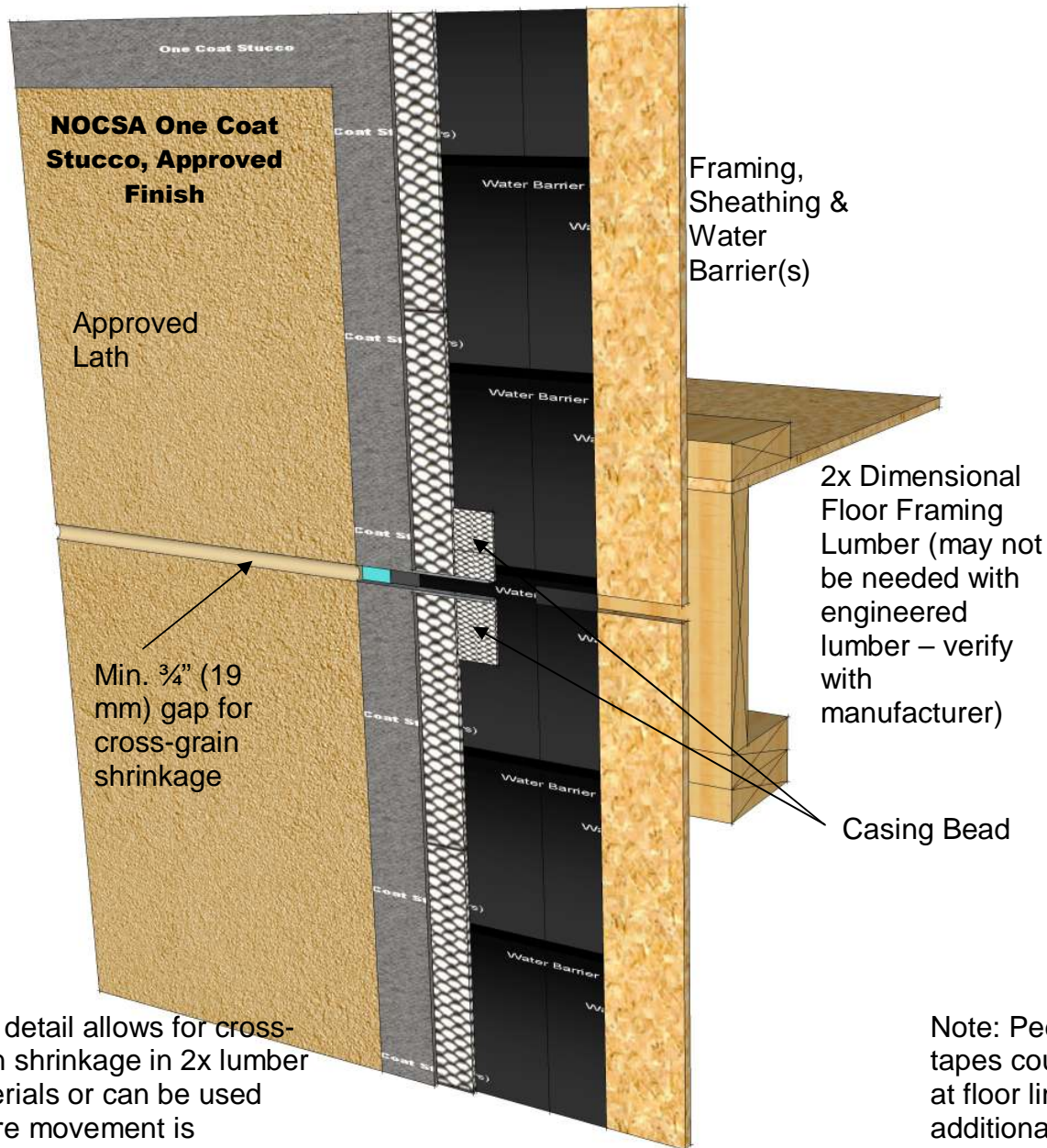
18 Horizontal Control Joint

These drawings relay the conceptual conditions of National One Coat Stucco Association (NOCSA) Systems and are not the construction drawings. Ultimately the design and detailing of an entire wall system is the responsibility of a professional. These details will guide the design professional in the use of National One Coat Stucco Association (NOCSA) applications. Refer to specific manufacturer's literature for the final application. National One Coat Stucco Association (NOCSA) disclaims design, warranty or construction intent or responsibility.



National One Coat Stucco Association Details

P.O. Box 121325 • Arlington • Texas • 76012 • 888-461-3352 • 817-460-3351 • FAX 817-461-0686



This detail allows for cross-grain shrinkage in 2x lumber materials or can be used where movement is anticipated.

Note: Peel & Stick tapes could be used at floor lines for additional protection

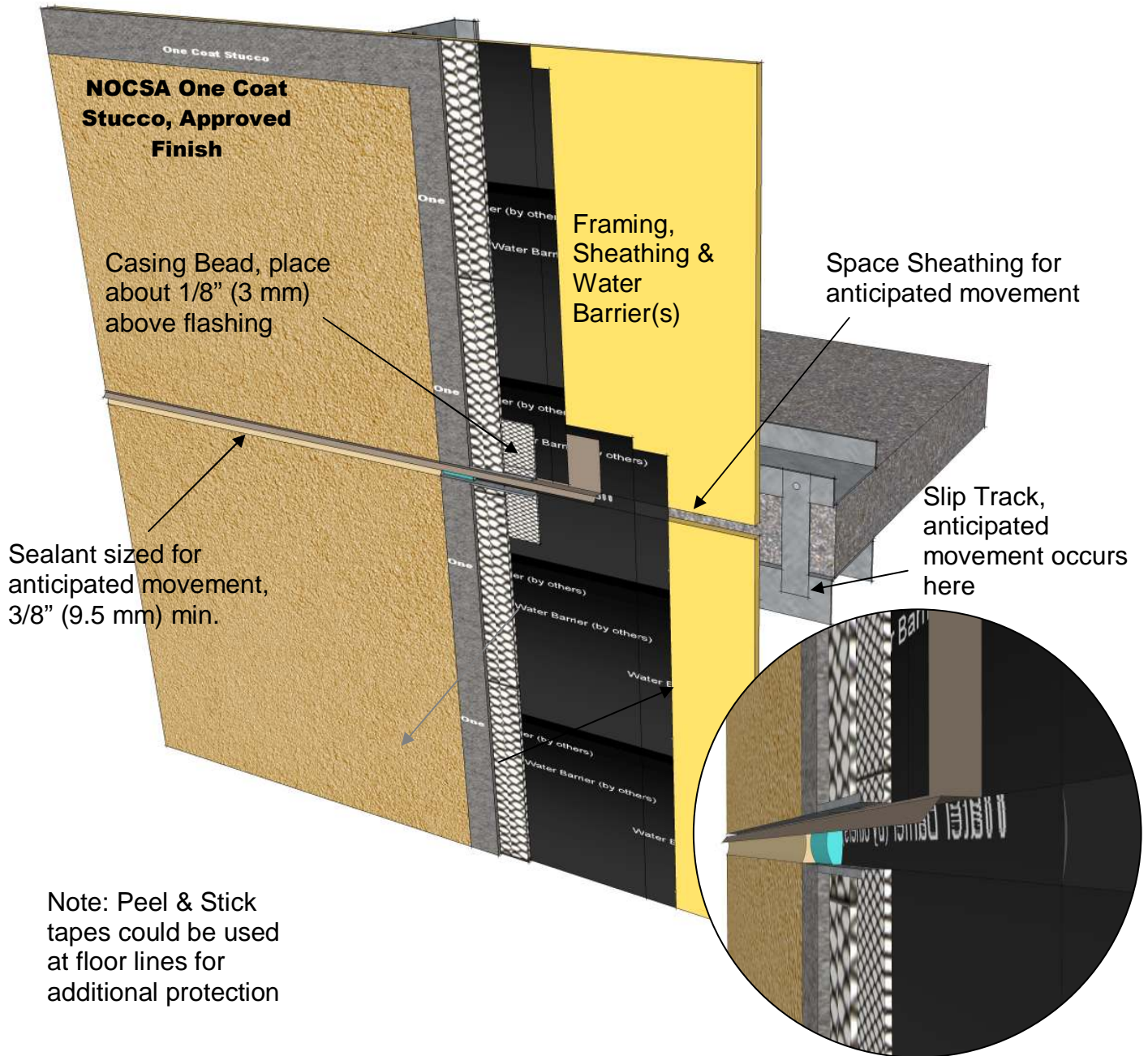
19 Floor Line Expansion Joint

These drawings relay the conceptual conditions of National One Coat Stucco Association (NOCSA) Systems and are not the construction drawings. Ultimately the design and detailing of an entire wall system is the responsibility of a professional. These details will guide the design professional in the use of National One Coat Stucco Association (NOCSA) applications. Refer to specific manufacturer's literature for the final application. National One Coat Stucco Association (NOCSA) disclaims design, warranty or construction intent or responsibility.



National One Coat Stucco Association Details

P.O. Box 121325 • Arlington • Texas • 76012 • 888-461-3352 • 817-460-3351 • FAX 817-461-0686



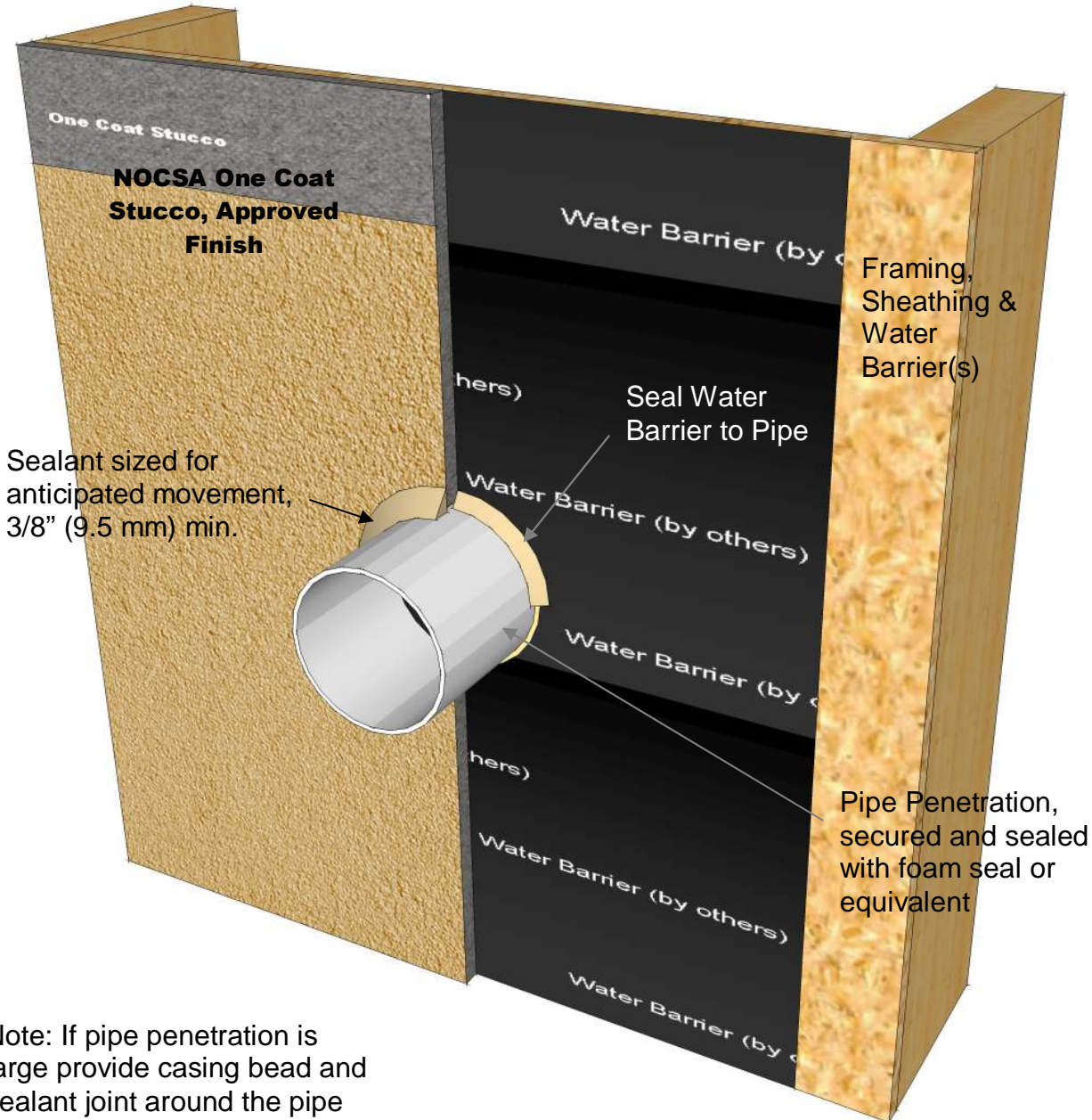
20 Floor Line Expansion Joint with Drainage

These drawings relay the conceptual conditions of National One Coat Stucco Association (NOCSA) Systems and are not the construction drawings. Ultimately the design and detailing of an entire wall system is the responsibility of a professional. These details will guide the design professional in the use of National One Coat Stucco Association (NOCSA) applications. Refer to specific manufacturer's literature for the final application. National One Coat Stucco Association (NOCSA) disclaims design, warranty or construction intent or responsibility.



National One Coat Stucco Association Details

P.O. Box 121325 • Arlington • Texas • 76012 • 888-461-3352 • 817-460-3351 • FAX 817-461-0686



Note: If pipe penetration is large provide casing bead and sealant joint around the pipe

22 Pipe Penetration

These drawings relay the conceptual conditions of National One Coat Stucco Association (NOCSA) Systems and are not the construction drawings. Ultimately the design and detailing of an entire wall system is the responsibility of a professional. These details will guide the design professional in the use of National One Coat Stucco Association (NOCSA) applications. Refer to specific manufacturer's literature for the final application. National One Coat Stucco Association (NOCSA) disclaims design, warranty or construction intent or responsibility.



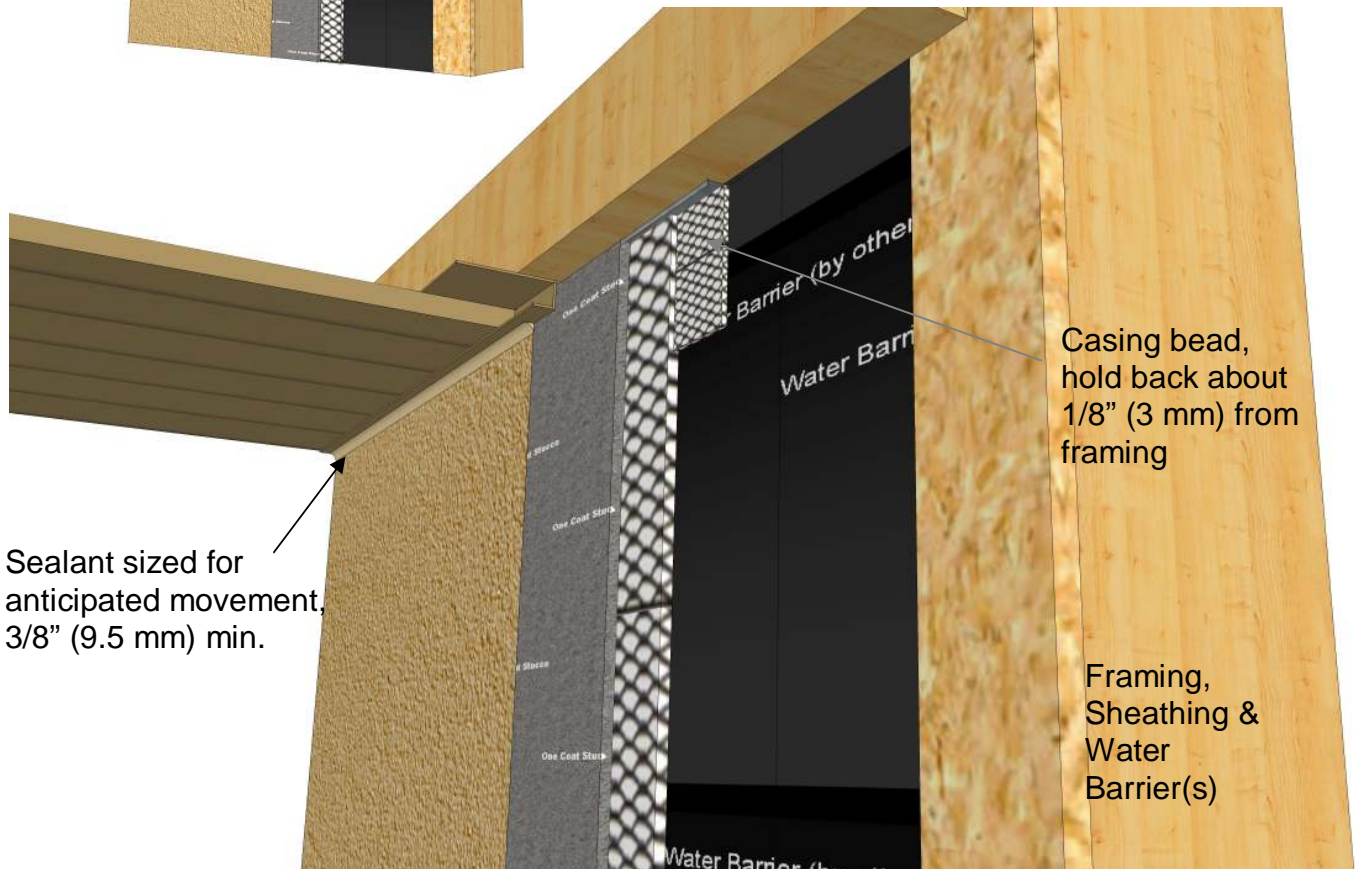
National One Coat Stucco Association Details

P.O. Box 121325 • Arlington • Texas • 76012 • 888-461-3352 • 817-460-3351 • FAX 817-461-0686



NOCSA One Coat Stucco, Approved Finish

Note: Sealant attains better bond when adhered to stucco rather than the textured finish.



Sealant sized for anticipated movement, 3/8" (9.5 mm) min.

Casing bead, hold back about 1/8" (3 mm) from framing

Framing, Sheathing & Water Barrier(s)

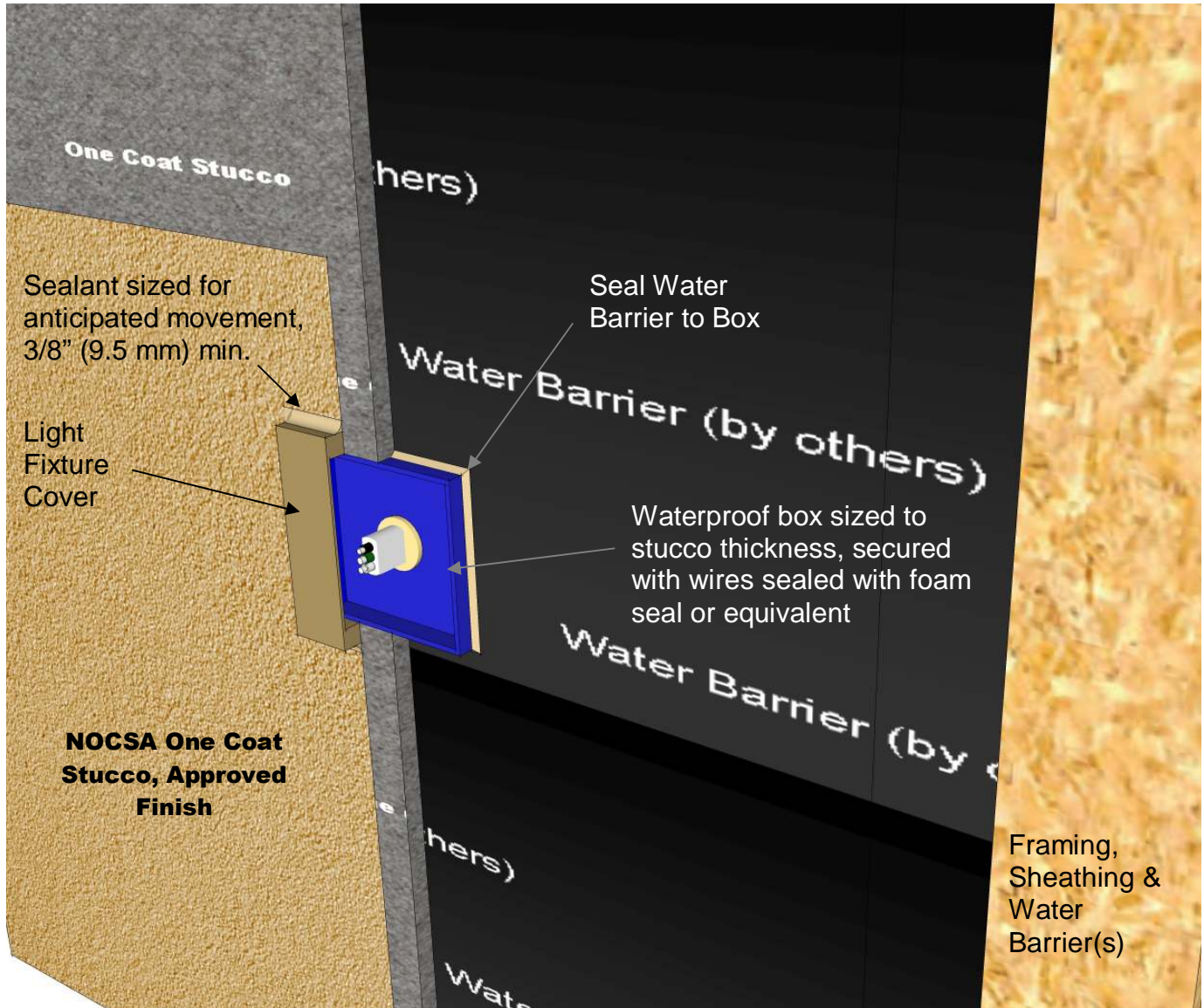
23 Soffit Detail

These drawings relay the conceptual conditions of National One Coat Stucco Association (NOCSA) Systems and are not the construction drawings. Ultimately the design and detailing of an entire wall system is the responsibility of a professional. These details will guide the design professional in the use of National One Coat Stucco Association (NOCSA) applications. Refer to specific manufacturer's literature for the final application. National One Coat Stucco Association (NOCSA) disclaims design, warranty or construction intent or responsibility.



National One Coat Stucco Association Details

P.O. Box 121325 • Arlington • Texas • 76012 • 888-461-3352 • 817-460-3351 • FAX 817-461-0686



Note: If light fixture penetration is large provide casing bead and sealant joint around the box

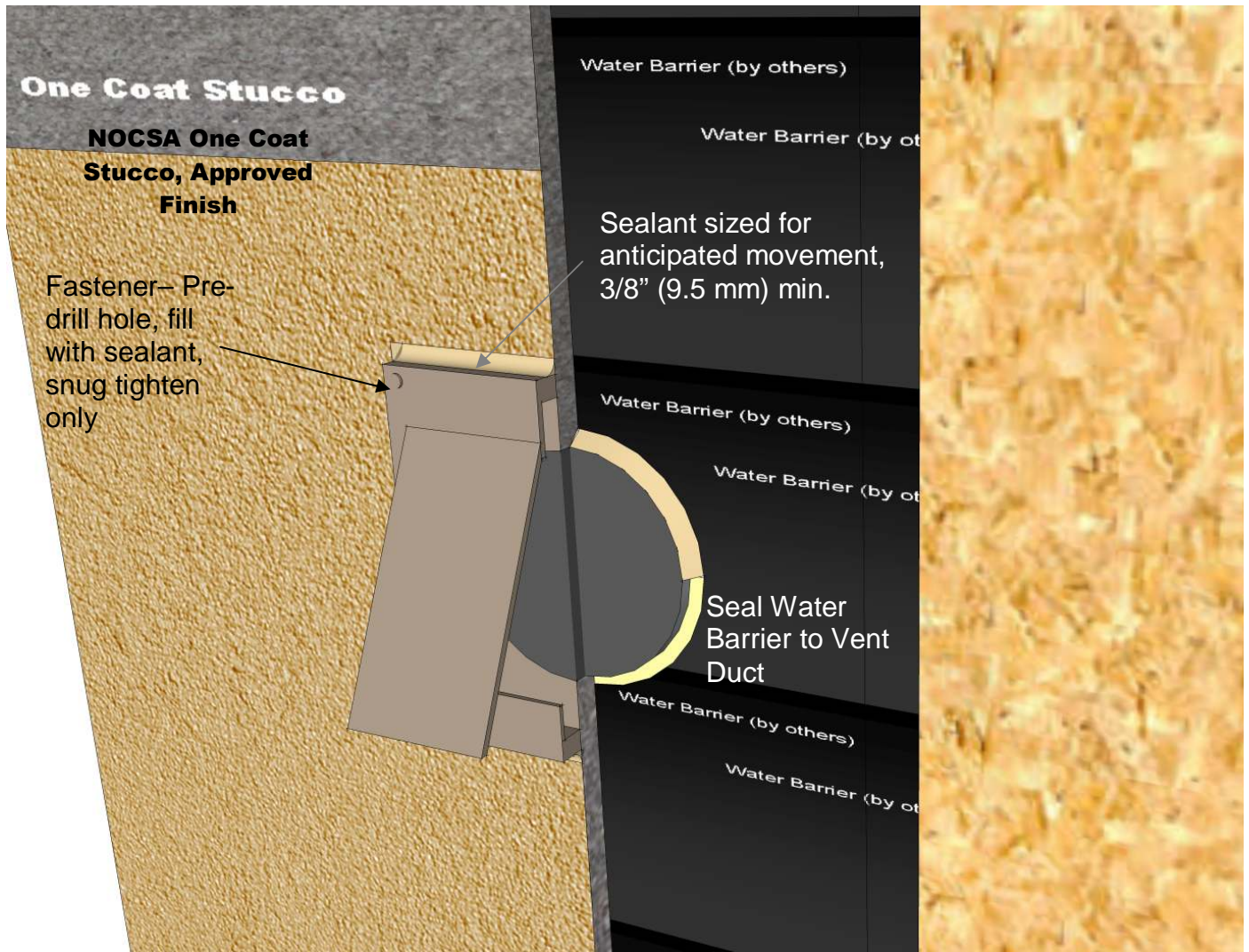
24 Light Fixture

These drawings relay the conceptual conditions of National One Coat Stucco Association (NOCSA) Systems and are not the construction drawings. Ultimately the design and detailing of an entire wall system is the responsibility of a professional. These details will guide the design professional in the use of National One Coat Stucco Association (NOCSA) applications. Refer to specific manufacturer's literature for the final application. National One Coat Stucco Association (NOCSA) disclaims design, warranty or construction intent or responsibility.



National One Coat Stucco Association Details

P.O. Box 121325 • Arlington • Texas • 76012 • 888-461-3352 • 817-460-3351 • FAX 817-461-0686



Duct Penetration, secured and sealed with foam seal or equivalent. Use approved heat resistant sealers if required

Note: If duct penetration is large provide casing bead and sealant joint around the duct

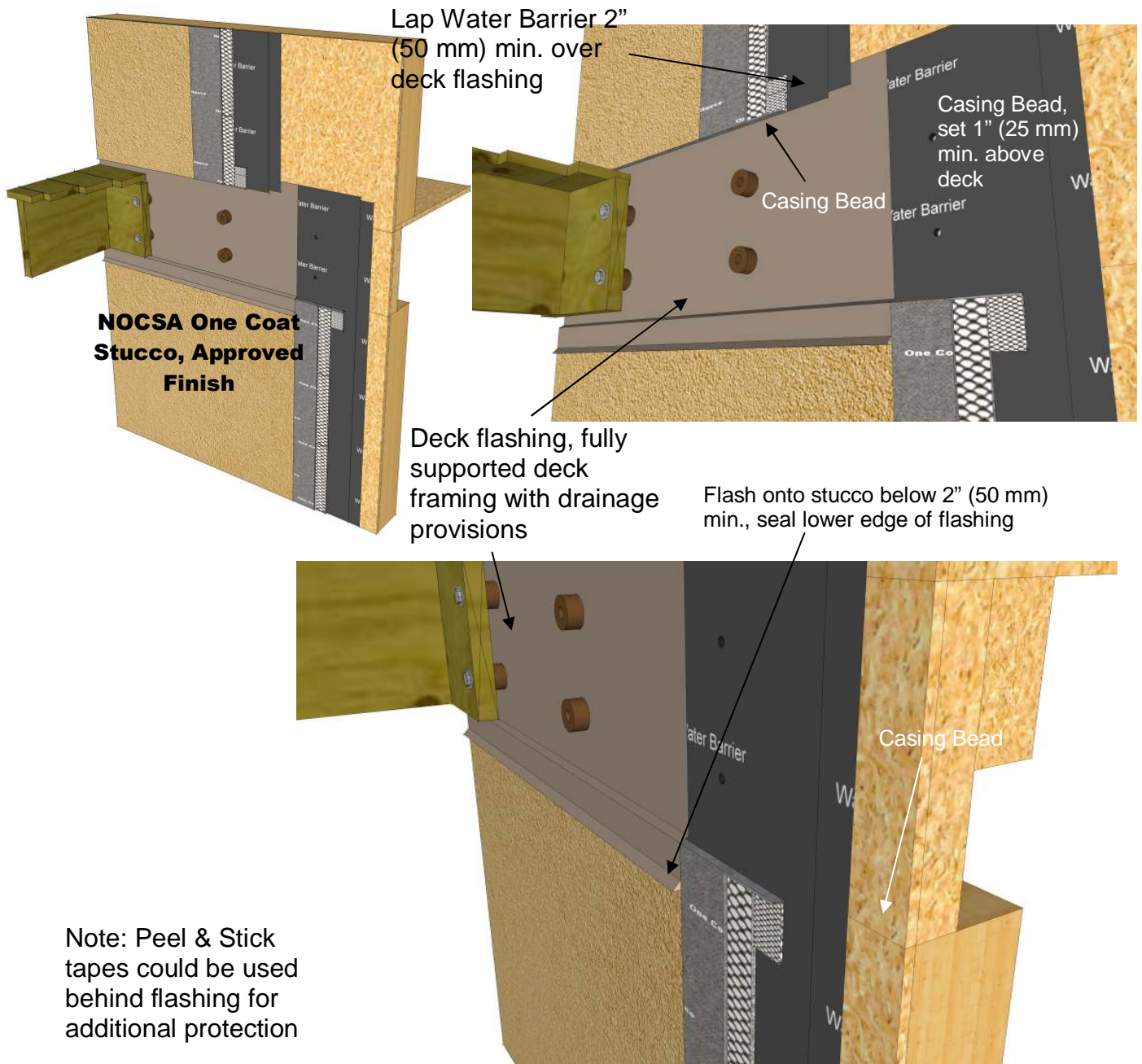
25 Dryer Vent

These drawings relay the conceptual conditions of National One Coat Stucco Association (NOCSA) Systems and are not the construction drawings. Ultimately the design and detailing of an entire wall system is the responsibility of a professional. These details will guide the design professional in the use of National One Coat Stucco Association (NOCSA) applications. Refer to specific manufacturer's literature for the final application. National One Coat Stucco Association (NOCSA) disclaims design, warranty or construction intent or responsibility.



National One Coat Stucco Association Details

P.O. Box 121325 • Arlington • Texas • 76012 • 888-461-3352 • 817-460-3351 • FAX 817-461-0686



Note: Peel & Stick tapes could be used behind flashing for additional protection

27 Deck Detail

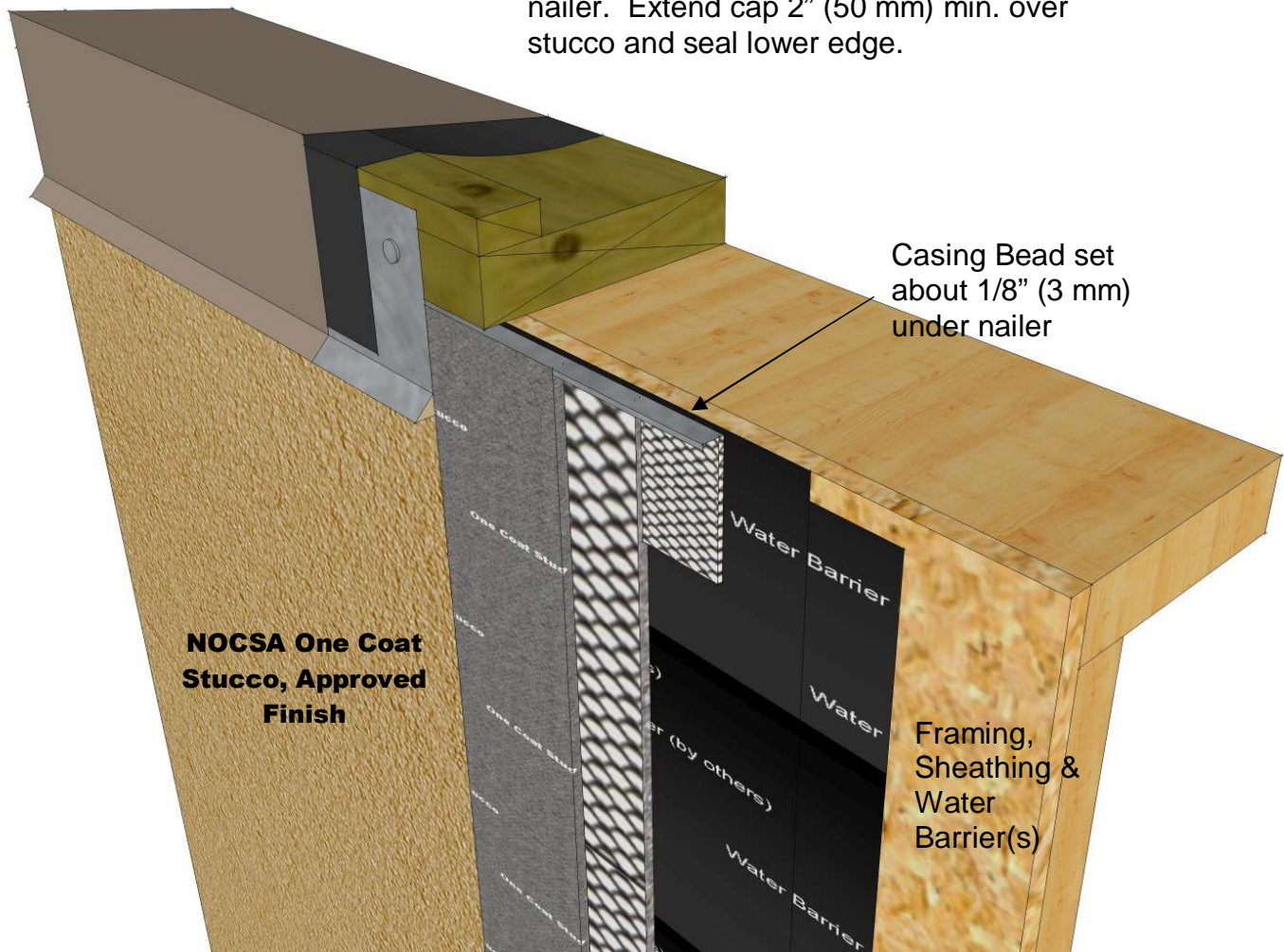
These drawings relay the conceptual conditions of National One Coat Stucco Association (NOCSA) Systems and are not the construction drawings. Ultimately the design and detailing of an entire wall system is the responsibility of a professional. These details will guide the design professional in the use of National One Coat Stucco Association (NOCSA) applications. Refer to specific manufacturer's literature for the final application. National One Coat Stucco Association (NOCSA) disclaims design, warranty or construction intent or responsibility.



National One Coat Stucco Association Details

P.O. Box 121325 • Arlington • Texas • 76012 • 888-461-3352 • 817-460-3351 • FAX 817-461-0686

Roof Coping Cap with secondary weather protection and continuous cleat over treated nailer. Extend cap 2" (50 mm) min. over stucco and seal lower edge.



28 Roof Cap

These drawings relay the conceptual conditions of National One Coat Stucco Association (NOCSA) Systems and are not the construction drawings. Ultimately the design and detailing of an entire wall system is the responsibility of a professional. These details will guide the design professional in the use of National One Coat Stucco Association (NOCSA) applications. Refer to specific manufacturer's literature for the final application. National One Coat Stucco Association (NOCSA) disclaims design, warranty or construction intent or responsibility.



National One Coat Stucco Association Details

P.O. Box 121325 • Arlington • Texas • 76012 • 888-461-3352 • 817-460-3351 • FAX 817-461-0686

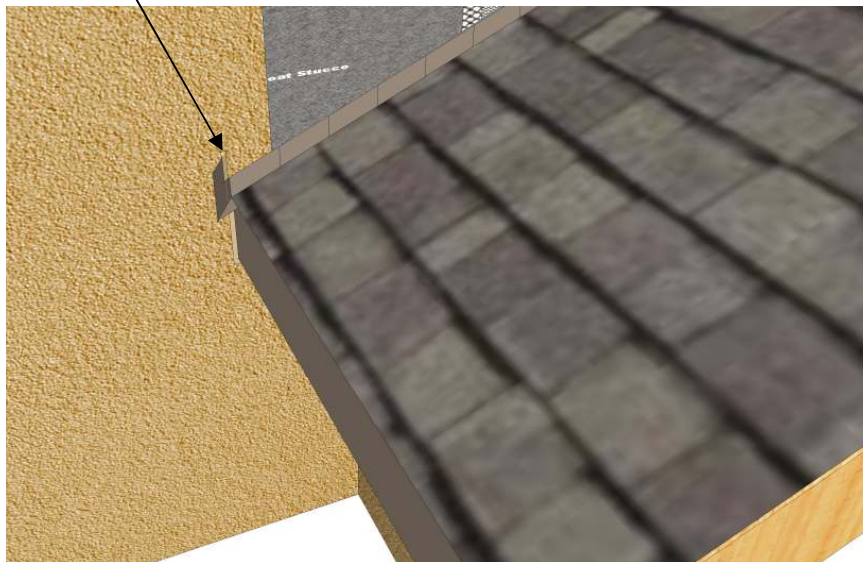
Kick Out Flashing

Install roofing felt 4" (10 cm) up sidewall, set roof step flashing and roofing.

Set casing bead or weep screed 1-2" (25-50 cm) above roof line.

Lap Water Barrier 2" (50 mm) min. over step flashing

Set Kick Out flashing before roofing and set in sealant. Seal where stucco meets flashing.



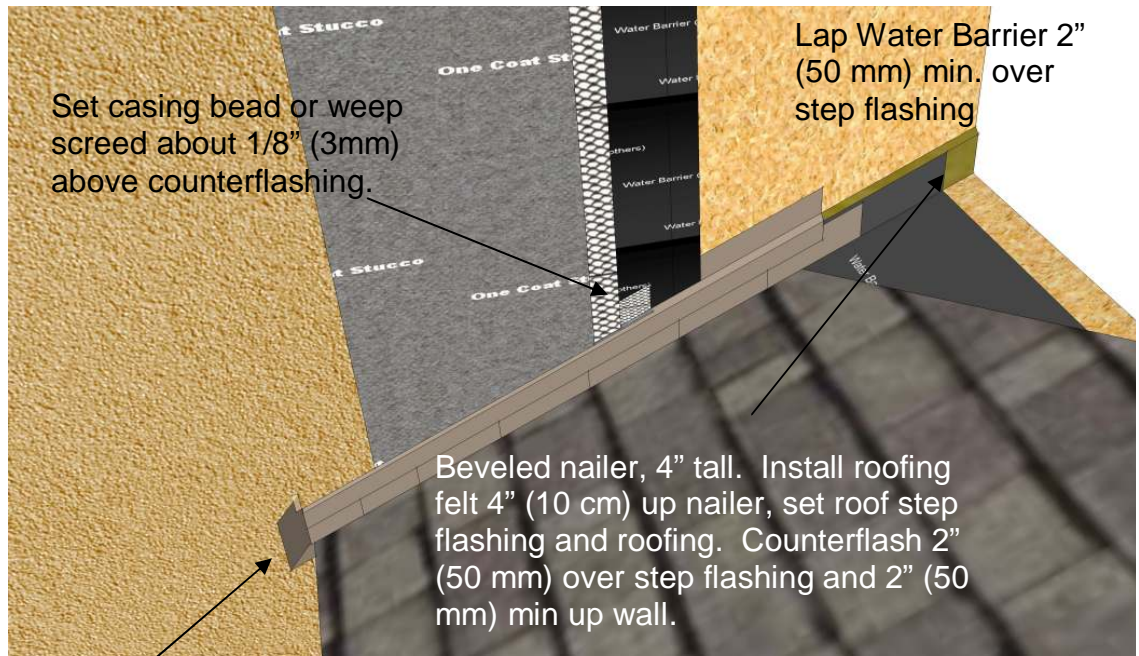
29 Roof Flashing

These drawings relay the conceptual conditions of National One Coat Stucco Association (NOCSA) Systems and are not the construction drawings. Ultimately the design and detailing of an entire wall system is the responsibility of a professional. These details will guide the design professional in the use of National One Coat Stucco Association (NOCSA) applications. Refer to specific manufacturer's literature for the final application. National One Coat Stucco Association (NOCSA) disclaims design, warranty or construction intent or responsibility.



National One Coat Stucco Association Details

P.O. Box 121325 • Arlington • Texas • 76012 • 888-461-3352 • 817-460-3351 • FAX 817-461-0686



Set Kick Out flashing before roofing and set in sealant. Seal where stucco meets flashing.



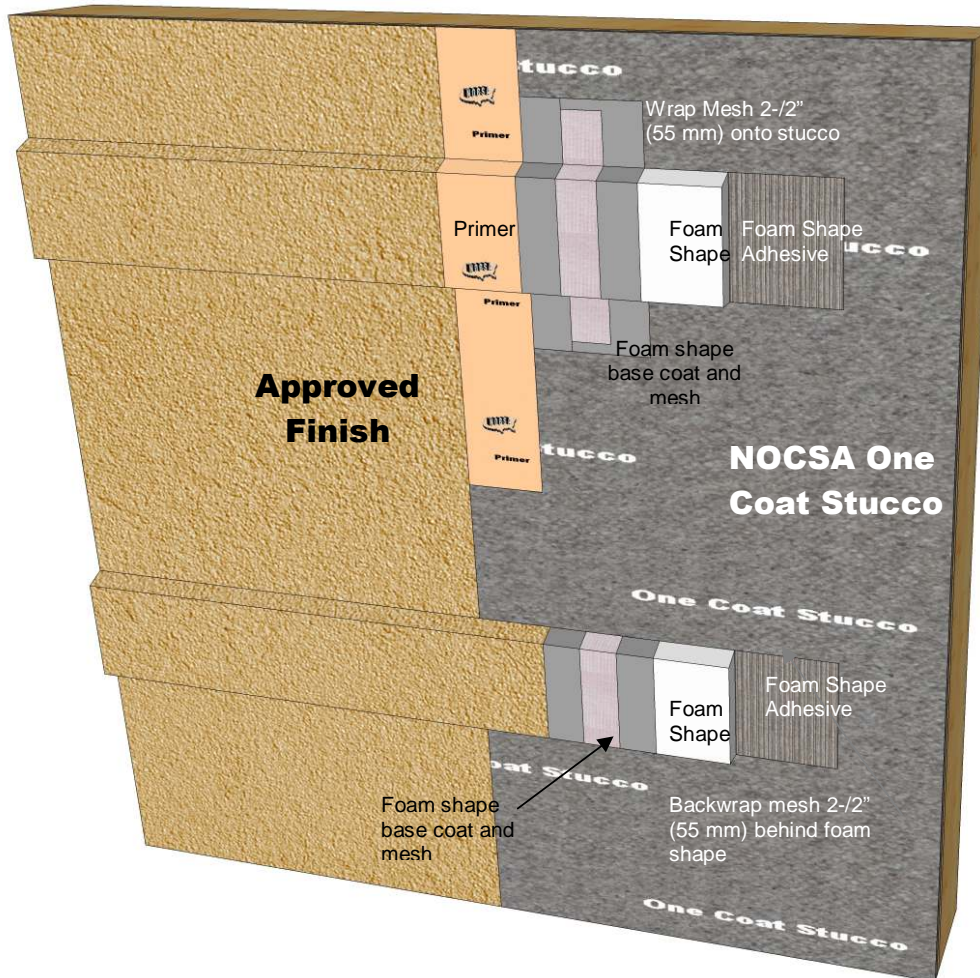
30 Roof Flashing - Counterflashed

These drawings relay the conceptual conditions of National One Coat Stucco Association (NOCSA) Systems and are not the construction drawings. Ultimately the design and detailing of an entire wall system is the responsibility of a professional. These details will guide the design professional in the use of National One Coat Stucco Association (NOCSA) applications. Refer to specific manufacturer's literature for the final application. National One Coat Stucco Association (NOCSA) disclaims design, warranty or construction intent or responsibility.



National One Coat Stucco Association Details

P.O. Box 121325 • Arlington • Texas • 76012 • 888-461-3352 • 817-460-3351 • FAX 817-461-0686



Method 1

The foam shape is adhered to the wall surface with a foam shape adhesive. Reinforcing mesh is embedded in foam shape base coat and run onto the wall surface.

Once cured apply primer over the NOCSA One Coat Stucco and finish with a textured acrylic finish.

Method 2

The foam shape is backwrapped or pre-wrapped with reinforcing mesh and foam shape base coat and adhered to the wall surface with a foam shape adhesive. Once cured apply an optional primer and a textured acrylic finish.

Note: Slope foam shapes a minimum of 1:2 to shed water

31 Foam Trim

These drawings relay the conceptual conditions of National One Coat Stucco Association (NOCSA) Systems and are not the construction drawings. Ultimately the design and detailing of an entire wall system is the responsibility of a professional. These details will guide the design professional in the use of National One Coat Stucco Association (NOCSA) applications. Refer to specific manufacturer's literature for the final application. National One Coat Stucco Association (NOCSA) disclaims design, warranty or construction intent or responsibility.



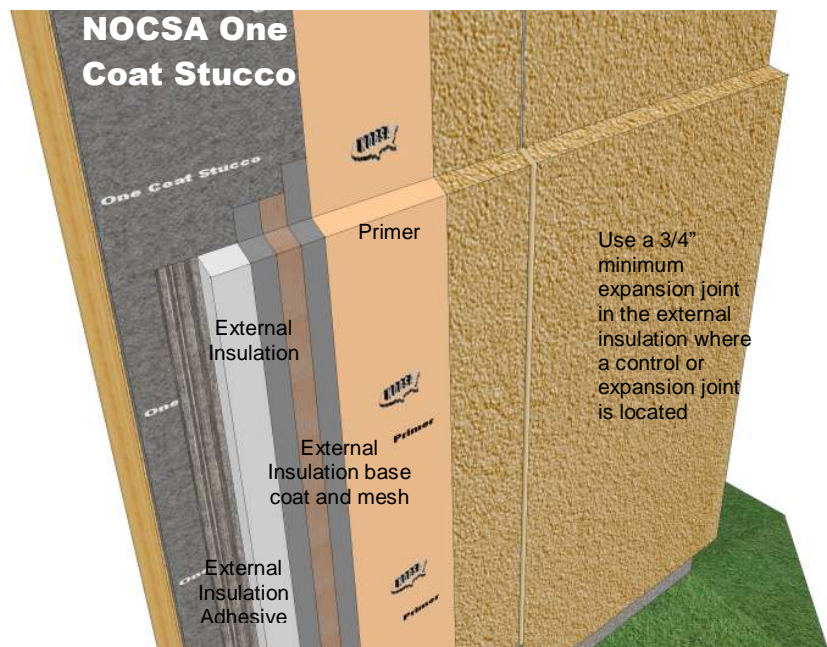
National One Coat Stucco Association Details

P.O. Box 121325 • Arlington • Texas • 76012 • 888-461-3352 • 817-460-3351 • FAX 817-461-0686



The External Insulation is adhered to the wall surface with an external insulation adhesive. Reinforcing mesh is embedded in external insulation base coat and run onto the wall surface.

Once cured apply primer over the NOCSA One Coat Stucco and finish with a textured acrylic finish.



Note: Slope external insulation a minimum of 1:2 to shed water

32 External Insulation

These drawings relay the conceptual conditions of National One Coat Stucco Association (NOCSA) Systems and are not the construction drawings. Ultimately the design and detailing of an entire wall system is the responsibility of a professional. These details will guide the design professional in the use of National One Coat Stucco Association (NOCSA) applications. Refer to specific manufacturer's literature for the final application. National One Coat Stucco Association (NOCSA) disclaims design, warranty or construction intent or responsibility.



National One Coat Stucco Association Details

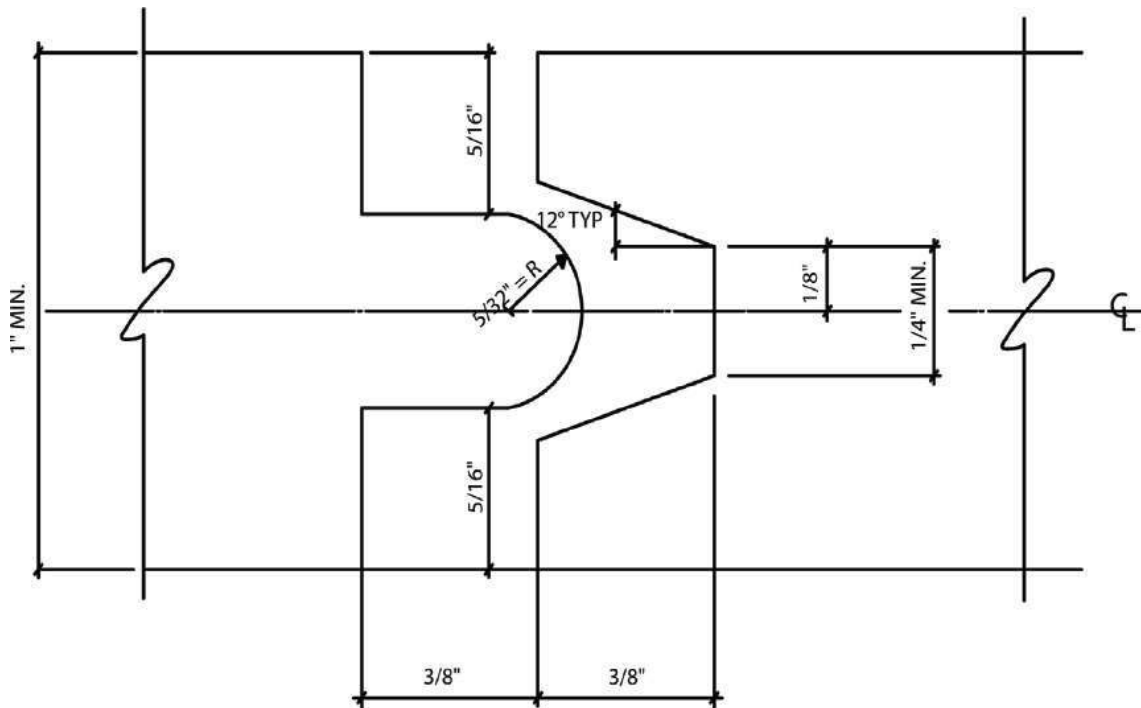
P.O. Box 121325 • Arlington • Texas • 76012 • 888-461-3352 • 817-460-3351 • FAX 817-461-0686

The EPS foam recognized for the One Coat Stucco application is a board product with a tongue on one edge and a groove on the opposite edge or square edge. The detail of tongue and groove is detailed in Acceptance Criteria AC-11 for Cementitious Exterior Wall Coating.

The detail suggests the board thickness to be 1 inch. Other sizes and thickness may be available. Over solid substrates, thinner foam plastic may be used when installed over two layers of weather resistive barrier. For example, if a 15/32" (12 mm) thick wood structural sheathing is required by design, a 1/2" (12.7 mm) thick EPS foam may be used so that when transitioned to areas without any sheathing, the wall will be approximately the same thickness.

The board can be supplied 2' wide by 8' long or 4' wide by 8' long (61 cm x 244 cm/122 cm x 244 cm).

When installing the EPS foam, the tongue is always installed in the upward position. This is to make sure any water that may be traveling down the EPS foam surface does not penetrate into the joint.



33 Tongue and Groove Insulation Profile

These drawings relay the conceptual conditions of National One Coat Stucco Association (NOCSA) Systems and are not the construction drawings. Ultimately the design and detailing of an entire wall system is the responsibility of a professional. These details will guide the design professional in the use of National One Coat Stucco Association (NOCSA) applications. Refer to specific manufacturer's literature for the final application. National One Coat Stucco Association (NOCSA) disclaims design, warranty or construction intent or responsibility.