

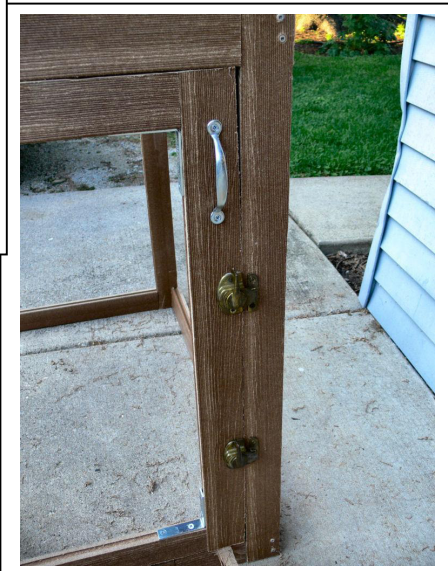
Directions to make an Outdoor Composter

This is a 3 foot square composter with 2 doors. It can be made from composite (PVC) board which will not rot like wood. Solid composite deck planking from Menards or Home Depot is suitable as a frame. It can be accessed from the top to add new material and from the side to occasionally mix the compost.

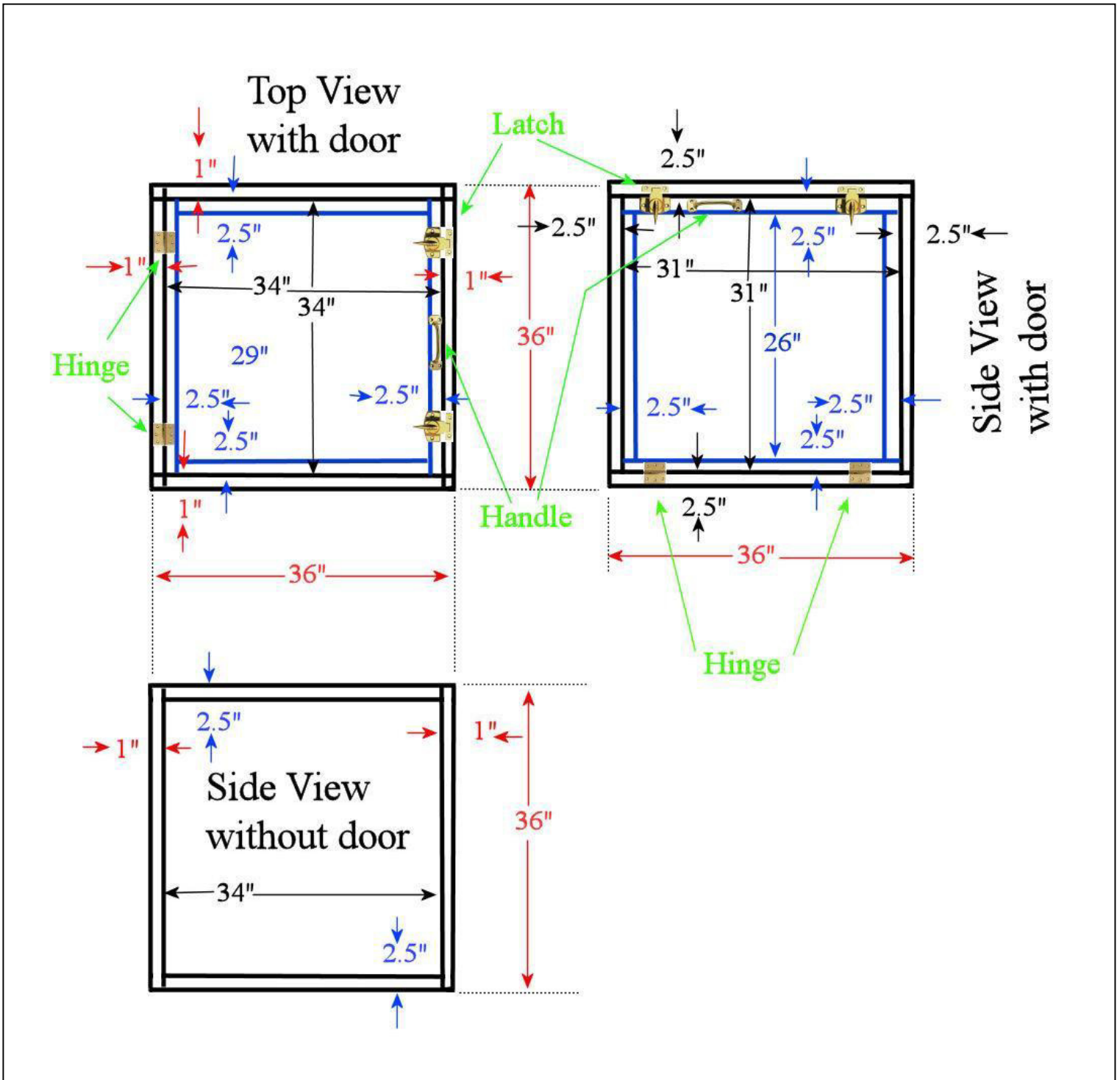


List of Materials

- 3 – 12' composite deck planks - \$77 from Menards
- 4 – Hinges - \$1 ea from Habitat Restore
- 2 – handles - \$1 ea from Habitat Restore
- 4 – window latches - \$1 ea from Habitat Restore
- 2- 2' chains - \$3 ea from Ace Hardware
- 2 – springs - \$1.50 ea from Ace Hardware
- 8 – right angle brackets – 50 cents ea from Habitat Restore
- 1- box of 70-100 hex head screw 3/4" long
- 1 – 1 lb. box of composite deck screws 1 5/8" - Home Depot \$9.37
- 1 – 1 lb. box of composite deck screws 3" (with a counter sink) or 3.5" without. – Home Depot \$9.37
- 1 – Roll of 1/4" hardware cloth (3'x25') \$37 from Menards



Detailed Dimensions



Building Notes

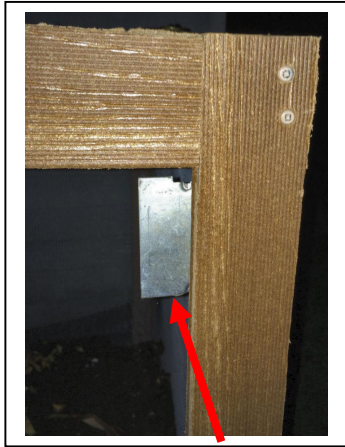
- The composite deck planking is slightly larger on the top side than the bottom. The 12' boards need to be trimmed until they are square, top and bottom.
- Each 12' x 5" board should be ripped making 2, 12' boards 2.5" wide
- The boards should be cut in the following lengths:
 - 4 boards – 36" x 2.5"
 - 6 boards - 34" x 2.5"
 - 6 boards – 31" x 2.5"
 - 2 boards 29" x 2.5"
 - 2 boards 26" x 2.5"
- If you purchased 3" deck screws, they must be counter sunk ½".
- If you purchase 3.5" deck screws, they do not need to be counter sunk.
- Use screws with a square bit or star bit to avoid stripping of the screws



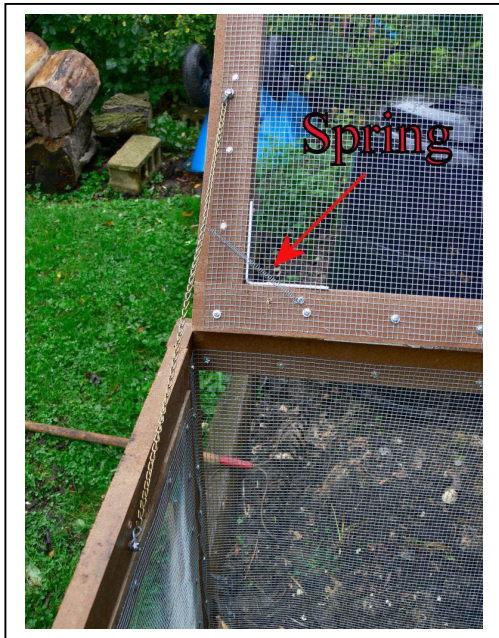
- Pre-drill the holes to avoid cracking the deck planking



- Attach ¼" hardware cloth with wide head screws or hex head screws
- Attached right angle brackets to each of the inside corners of the doors to keep them square.
- Use two window latches to latch each door. This will also help keep the cube square



- It is helpful to make a metal door jamb. I used parts of an electrical outlet box from Habitat Restore. The side door jamb is flat. The top door jamb is a right angle.



Opened



Closing

- The top door needs extra support. Two chains were added so the door will only open 120 degrees.
- The chain can hang up as the door closes. A spring was added so the chain is pulled back as the door is opened and closed.

Write if you have questions.

Charles Reiss creiss(at)ameritech.net.