

Name _____
 Address _____
 City/St _____ Zip _____



First-Class
 Postage
 Required
 Post Office will
 Not deliver
 without proper
 Postage.

Warranty Registration
ABEL QUALITY PRODUCTS
 165 N AVIADOR ST
 CAMARILLO CA 93010-8318



**Abel Reel
 Lifetime Warranty**



Abel Automatics, Inc. ("Abel"), except as otherwise provided herein, warrants to the original purchaser only of this fishing reel against any defects in material, manufacturing and workmanship for the lifetime of the original owner. This warranty applies to parts and labor.

This warranty is limited to the repair or replacement of the reel (at the sole option of Abel) and does not cover any consequential, special or incidental damages.

THIS WARRANTY DOES NOT COVER DAMAGE CAUSED BY MODIFICATION, ALTERATION, REPAIR OR SERVICE BY ANYONE OTHER THAN ABEL AUTOMATICS, INC., NOR DOES IT COVER LOSS, MISUSE OR IMPROPER MAINTENANCE OF THE REEL.

To ensure the integrity of the anodized aluminum surfaces of the reel, the reel **MUST** be rinsed in fresh, warm, soapy water after each exposure to salt water. Use a small soft brush to remove the salt residue from hard to reach places.

As with all big game & super series reels, we strongly urge that you "back-off" the drag 100% when the reel is not in use, in storage or during shipping.

For a nominal fee of \$20 plus postage and handling, Abel will clean, inspect and re-lubricate your reel. We recommend every 5-10 years. Should the ball bearings need replacement due to normal wear, there will be an additional cost-of-materials charge. To obtain service on your ABEL REEL, deliver your reel, postage prepaid, to: Abel Automatics, Inc., 165 Aviator Street, Camarillo, CA 93010, Telephone: 866.511.7444 e-mail: info@abelreels.com

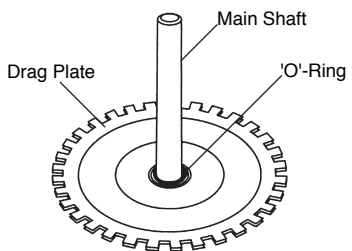
Date of Purchase _____ Model No. _____ Serial No. _____
 Purchased from _____

**Drag Conversion Instructions (Square Tooth)
 For Abel Big-Game & Super Series Reels Only**

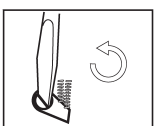
- Remove spool
- Using a screwdriver that matches the slot size of the pawl screw and turning to the left (counterclockwise), remove the pawl screw.
- Flip the pawl over
- Re-insert the pawl screw and tighten, to the right (clockwise) just so it's snug
 DO NOT OVER-TIGHTEN
- Replace spool

NOTES:

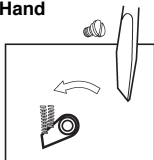
1. If the springs became dislodged, replace them over the pins (Shortest spring on the pin closest to the screw). Springs are held on with grease only.
2. Drag plate has to be removed to adjust or replace springs



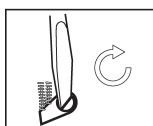
From Right-Hand to Left-Hand



#1. Using a screwdriver, loosen the pawl screw (counterclockwise)



#2. Remove screw and flip Pawl over



#3. Re-insert the pawl screw and tighten (clockwise)

Lifetime Warranty Registration

Name _____ Birth Date _____

Address _____

City, State _____ Zip _____

Phone () _____ E-mail _____

Date of Purchase _____ Model No. _____

Purchased from _____

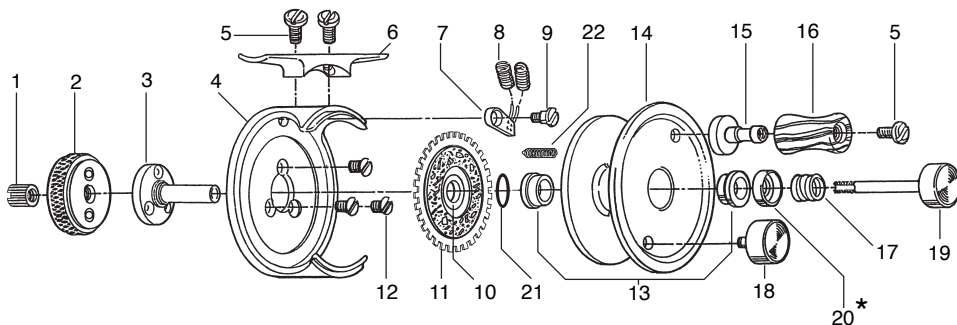
Is this your first Abel Products purchase? yes no

Comments _____



Retain this side for your records

Your Abel Big Game & Super Series Fly Reel



Easy Care Instructions

(Abelube Kit recommended)

Sportsman's Lube

1. Apply a light coat of pure neat's-foot oil to the cork drag, only if drag feels unsmooth.
2. Keep main shaft, threaded end of the draw bar, and the pawl coated with medium to heavy all-purpose grease.
3. Always remove sand and grit after use.
4. Rinse reel in warm, soapy water after each exposure to saltwater. Use a small, soft brush and WD-40 to remove salt residue from hard to reach places - screws - holes etc.
5. Always back off the drag knob to release pressure on the main spring when not in use.
6. Store in protective reel case both on and off the rod.
7. When reel is submerged, or, after cleaning, give it a few quick shakes to remove any moisture that might remain between the spool and frame or on the drag surface.

To Disassemble or Change Spools

1. Remove locknut in center of drag knob. Use a small screwdriver, dime or penny.
2. Loosen and remove drag adjustment knob; place in safe place such as your hat or vest.
3. Pull out drawbar from reel assembly, taking care not to lose spring retainer.
4. Remove spool to expose interior parts.
5. Take care not to lose pawl springs (#8); grease is used to keep springs in place.
6. Reel #'s 0, Pt. 5, 3, 3N, 4, 4N, 4.5N and 5; Super 2, 6, 8, 10, 11, 12 and Super 14 have a spring retainer (#20); Reel #'s 1 and 2; Super 4, 5 and 5N do not.
7. Reel #'s 0, Pt. 5, 1, 2 & 3N; Super 2, 4, 5, 5N and 6 are sent from the factory left-hand retrieve. Reel #'s 3, 4N, 4, 4.5N and 5; Super 8, 10, 11, 12 and 14 are sent right-hand retrieve. Please see warranty card for conversion instructions if necessary.
8. Place flyline size indicator on the bottom of the reel. Do not place on back of spool since they tend to interfere with the precise drag mechanism.

NO.	PART NAME
1.	Lock Nut
2.	Drag Knob
3.	Main Shaft
4.	Frame
5.	Pan Head Screw
6.	Foot
7.	Pawl
8.	Pawl Spring
9.	Shoulder Screw
10.	Drag Plate Bearing
11.	Drag Plate
12.	Screw, Shaft Mount
13.	Spool Bearing
14.	Spool
15.	Handle Post
16.	Handle
17.	Main Spring
18.	Counter Weight
19.	Draw Bar
20.	Spring Retainer
21.	"O" Ring
22.	Click Out Spring

* Excluded on #1, #2, Super 4, Super 5 & Super 5N.



ABEL QUALITY PRODUCTS
 165 Aviator St.
 Camarillo, CA 93010
 866.511.7444
 Fax (805) 482-0701
 E-Mail: info@abelreels.com
 Website: www.abelreels.com