

8-ft. TradeMaster

For F250 & F350 56" Cab-to-Axle (CA) Ford Pickup (w/ Box Delete)

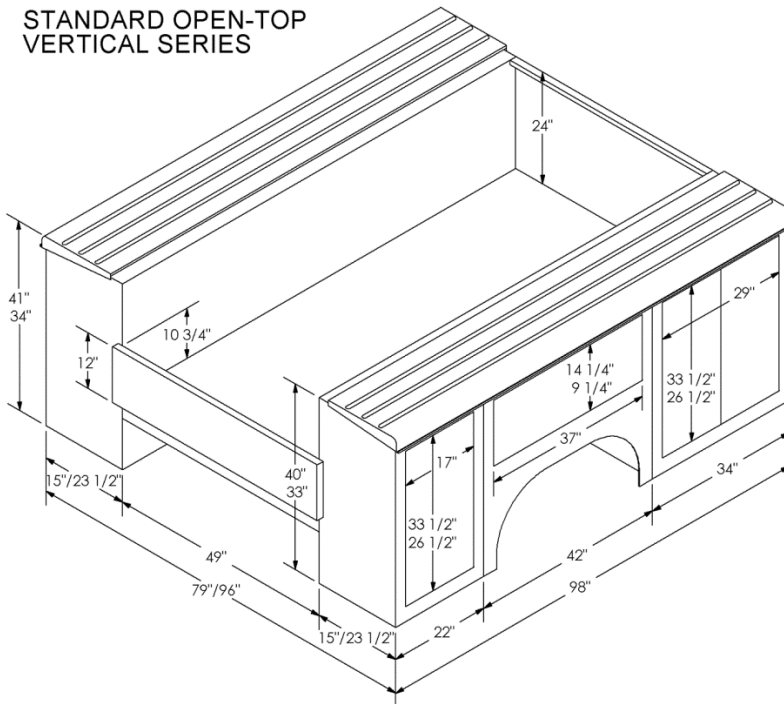
8-Ft TradeMaster Shown w/ Heavy-Duty Over-Cab Rack Option



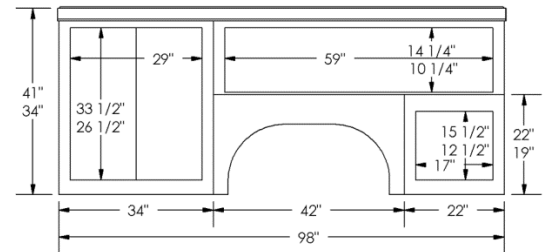
FORD 8-FT TRADEMASTER DIMENSIONS

Last Update: 09/10/2018

STANDARD OPEN-TOP
VERTICAL SERIES

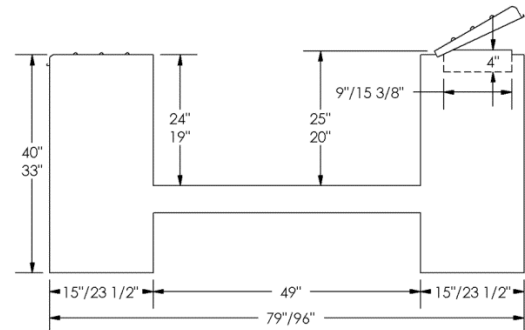


HORIZONTAL SERIES



CLOSED-TOP
MODEL

OPEN-TOP
MODEL



NOTE:

- 1) DOOR COMPARTMENT DIMENSIONS ARE THE CLEAR DOOR OPENING.
- 2) TOP VERTICAL DIMENSIONS ARE STANDARD HEIGHT BODIES, BOTTOM DIMENSIONS ARE LOW PROFILE BODIES.
- 3) DIMENSIONS WITH FORWARD SLASH ARE SRW / DUALY.

8-ft. TradeMaster

For F250 & F350 56" Cab-to-Axle (CA) Ford Pickup (w/ Box Delete)

Application / Part Number	Body Profile	Body Length	Compt. Depth	Compt. Height	Floor Width	M.S.R.P
8-FT. TradeMaster Body w/ Standard Equipment (For F250 & F350 56"CA SRW Truck)						
BODIES						
HT098-1541A (w/ Stainless Steel Pop-Top Lids)	Standard Height	98"	15"	41"	49"	\$8,124
HT098-1534A (w/ Stainless Steel Pop-Top Lids)	Low Profile	98"	15"	34"	49"	\$8,124
HT098-1541AF (w/ Tredbrite Pop-Top Lids)	Standard Height	98"	15"	41"	49"	\$8,482
HT098-1534AF (w/ Tredbrite Pop-Top Lids)	Low Profile	98"	15"	34"	49"	\$8,482
HT098-1540A (w/ Ribbed Closed Tops)	Standard Height	98"	15"	40"	49"	\$8,036
HT098-1533A (w/ Ribbed Closed Tops)	Low Profile	98"	15"	33"	49"	\$8,036
8-FT. TradeMaster Body w/ Standard Equipment (For F350 56"CA DRW Truck)						
BODIES						
HT098-2341A (w/ Stainless Steel Pop-Top Lids)	Standard Height	98"	23 1/2"	41"	49"	\$8,782
HT098-2334A (w/ Stainless Steel Pop-Top Lids)	Low Profile	98"	23 1/2"	34"	49"	\$8,782
HT098-2341AF (w/ Tredbrite Pop-Top Lids)	Standard Height	98"	23 1/2"	41"	49"	\$9,706
HT098-2334AF (w/ Tredbrite Pop-Top Lids)	Low Profile	98"	23 1/2"	34"	49"	\$9,150
HT098-2340A (w/ Ribbed Closed Tops)	Standard Height	98"	23 1/2"	40"	49"	\$8,674
HT098-2333A (w/ Ribbed Closed Tops)	Low Profile	98"	23 1/2"	33"	49"	\$8,674
STANDARD EQUIPMENT						
Y08AWHITE	Paint Harbor White					INC
Z08-F/BRUL(79/96)-08	Mount w/ Incandescent Lights & Recess Bumper w/ 8" Step					INC
PS01 or P01	PS01 Stainless Steel Gravel Guards (w/ Stainless Steel Lids) or P01 Tredbrite Gravel Guards (w/ Tredbrite Aluminum Lids) (SRW)					INC
PS03 or P03	PS03 Stainless Steel Gravel Guards (w/ Stainless Steel Lids) or P03 Tredbrite Alum. Gravel Guards (w/ Tredbrite Lids) (DRW)					INC
PAINT AND MOUNT OPTIONS						
Y08RED ¹	Single Stage Non-Clear Coat F1 Red Only					\$1,690
Y08BLACK ¹	Single Stage Non-Clear Coat Harbor Black Only					\$3,025
Y08METALIC ¹	Multiple Stage Clear Coat Metallic					Call
Z08-F/BRUL79-08-LED	Mount, Standard w/ LED Stop, Tail, Turn, Clearance & License Plate Lights (SRW)					\$188
Z08-F/BRUL96-08-LED	Mount, Standard w/ LED Stop, Tail, Turn, Clearance, License Plate and 3-Bar Lights (DRW)					\$292
¹ Perfect Color Match with Cab NOT Guaranteed						

¹ Perfect Color Match with Cab NOT Guaranteed

8-ft. TradeMaster

For F250 & F350 56" Cab-to-Axle (CA) Ford Pickup (w/ Box Delete)

RACKS & RACK ACCESSORIES

(All Racks Have Swing-Away Rear Bar, 4 Rope Hooks & Removable Center Bar Over Bed Area)

RKTFL098-1541-R ¹	"Side Loader Rack"—Tapered-Leg Rack w/ 4" Drop-Down Longitudinal Bars, for Regular Cab Only	\$1,671
RKTFL098-1541-E ¹	"Side Loader Rack"—Tapered-Leg Rack w/ 4" Drop-Down Longitudinal Bars, for Super and Super Crew Cab	\$1,671
RKTOFB	Extend Any Standard Rack Above to Over Front Bumper	\$1,168
RK35	Conduit Box With Rear Door (123"L x 6"H x 9.5"W)	\$777
RK36FE	Conduit Box Fully Enclosed With Rear Hinged Door & Hinged Lid. (123"Lx6"Hx9.5"W)	\$1,237
RK50	Two (2) Conduit Pockets	\$685
RK60	Expanded Metal Roof Shield	\$716
RK61	14 GA. Galvanized Steel Roof Shield Punched on Turret Press	\$572
RK65	Front Stop for Rack	\$274
RK90	Stainless Covers for Cross Bars on Racks (Price per Cross Bar)	\$199
MSTRAPS	Two (2) Rack Straps – Ratchets up to 500 lbs. Tension (Recommended with Conduit Pockets to Firmly Secure Materials or Ladders)	\$375

SAFETY & SECURITY OPTIONS

LOK-AOK-FORD-8FT	Harbor ALL-ONE-KEY Door Locks Keyed at Our Factory to Match the Vehicle Ignition Key. N/A to D30 Master Lock Option. Use D30-HANDLE (Separate Key Required for Master Lock)	\$189
D30	Push-Button Master Lock (Internal Stainless Steel Security Bars Lock All Doors). Keys Match With Push-Button Locks. With A-O-K Locks, There is No Matching Push-Button A-O-K Lock. Requires Use of Option D30-HANDLE With Separate Lock and Key.	\$1,311
D30-HANDLE	Master Lock with Rear Handle (Internal Stainless Steel Security Bars Lock All Doors). Has Separate Lock and Key from A-O-K Lock. Otherwise, All Keys Match.	\$1,311
CBE098-2 ²	2-Piece Cargo Bed Enclosure with Flip-Up End Gate	\$1,331
CBE098-3 ²	3-Piece Cargo Bed Enclosure with Flip-Up End Gate	\$1,493
CBE098-3-56 ²	3-Piece Cargo Bed Enclosure with Rear Barn Doors (for HT098-56" High)	\$2,510
CBR098-2 ²	2-Piece Raised Cargo Bed Enclosure with Rear Barn Doors	\$2,510
CBR098-3 ²	3-Piece Raised Cargo Bed Enclosure with Rear Barn Doors	\$2,510
MLSBRB-LED	Rotating LED Strobe on Mounting Pad i.e. Mounts on Rack or Headboard Only, Not Roof. Lighted Cab Switch Included. ECCO 7965 LED Light, or Equivalent.	\$649
MLSBRB-LED-POLE	Rotating LED Strobe with Mounting Pad on Separate Pedestal Pole. Lighted Cab Switch Included. ECCO 7965 Light, or Equivalent.	\$747
MLTBAR-C	Light Bar Mounted on Separate Rack Behind Cab. Wired Through Back Bottom of Cab, Not Through Headliner. Whelen TAC F85LH, or Equivalent.	\$2,573
MCBC03	Chock Block Holder in Rear Wheel Well. One Chock Block Holder Passenger Side and One Driver's Side	\$842
MALARM	Back-up Alarm (Preco 380P or Equivalent)	\$376

¹ Indicate Chassis as Regular Cab, Super Cab, or Super Crew Cab

² Remember to Add One Additional LOK-AOK (Make Quantity 7) if Adding AOK Locks to Body

8-ft. TradeMaster

For F250 & F350 56" Cab-to-Axle (CA) Ford Pickup (w/ Box Delete)

RECEIVERS, HITCHES & LIFT GATES		
MREC-IV ¹	Class IV Receiver – 2" Tube; A-Braced to Frame(10,000 lb. Gross Trailer Wt., 1,000 lb. Tongue Wt.	\$546
MHITCH01	Kerins K200 Multi Hitch With K750 Adaptor.	\$305
M7PRONG	Standard 7-Prong Trailer Connector	\$216
M7/4PRONG	Standard 7/4-Prong Trailer Connector	\$316
G2-54-1342TP38	Tommy Gate Liftgate, 1300 lb. Lift Cap., 49x38 Platform w/4" Taper – (w/Bumperettes add \$654)	\$5,632
G2-54-1342TP42	Tommy Gate Liftgate, 1300 lb. Lift Cap., 49x42 Platform w/7" Taper – (w/Bumperettes add \$654)	\$5,763
G2-54-1642TP38	Tommy Gate Liftgate, 1600 lb. Lift Cap., 49x38 Platform w/4" Taper – (w/Bumperettes add \$654)	\$5,930
G2-54-1642TP42	Tommy Gate Liftgate, 1600 lb. Lift Cap., 49x42 Platform w/7" Taper – (w/Bumperettes add \$654)	\$6,061
BUMPERETTE-()	Bumperettes (Only Applies when Ordering Liftgate)	\$686
ADDITIONAL TRADEMASTER OPTIONS		
C06	Delete Front Compartment. Extend Floor to Exterior Edge of Body. Add UnderDeck Compartment Below Floor.	\$1,363
C25	Louver the Inner and Outer Skins of a Single Door for Ventilation	\$118
C26	Reinforce Top of First Compartment With 10 GA. Plate for Mounting Additional Equipment (e.g. Compressors).	\$523
C34	Transverse Compartment Built Off #1 Compartment.-Single Side Access (Choose Street Side or Curb Side)	\$711
C40	Transverse Compartment Built Off #1 Compt.-Dual Side Access	\$1,033
C41	(1) 250 lb. Roll-Out Tray on (12) Heavy-Duty Bearings for Transverse Compartment (For Single or Dual Side Access)	\$1,728
F98	Reinforce Floor Behind Bulkhead to Carry 750 lb. of Additional Equipment, Machinery or Fluid Tanks	\$645
MACTIRE	Spare Tire Carrier Mount Behind Bulkhead Only. Not Attached to Compartments Due to Potential Water Leaks in Compartment	\$296
MBL08 ²	Bed Liner for 8-ft Body. Lines the Bed Area, Back Wrappers, Bulkhead and Tailgate.	\$1,023
METRKO8	E Track, One Row Mounted Along Each Side of Bed Area. Must Specify Location Height in Bed Area.	\$708
MGFI	Additional GFI Outlet to be Wired to Inverter (Requires MINVTR)	\$322
MINVTR	Inverter w/ 115 Volt Outlet on Inverter Wagan Inverter 3000 Watts Continuous True Weighted Power (6,000 Watts Peak Surge Power. 115 Volts) Standard Mount Horizontal on Driver's Side Compartment.	\$1,906
MMUD2430	Mud Flaps w/ Harbor Logo for Trade Master Bodies. 24x30 but Cut Down to Fit Wheel Area.	\$137
MPIPE	Heavy Duty Pipe Holder for Front or Rear End Panel. Only (1) Required When Used in Conjunction w/ Rear Mount Vise Bracket)	\$222
MVISE	Heavy Duty Stainless Steel Vise Bracket on Rear End Panel, 12"x7" for DRW only (not for SRW Bodies or With Lift Gate or Barn Doors).	\$342
MVISE-10	Heavy Duty Stainless Steel Vise Bracket on Rear End Panel, 10"x7" for SRW or DRW Bodies.	\$359
MWCB5GAL	5 Gallon Water Cask Platform and Bracket Mounted on Rear End Panel.	\$611
TG19	19' Tailgate In Lieu of Standard Height 12" Tailgate. For Use on Standard Floor Widths Only.	\$142
TGA10GA	Tailgate, Standard Size Reinforced with Smooth 10 GA. Inner Panel. Applies to Standard Size Tailgates Only	\$218

¹ Reference Vehicle GCWR for Specific Vehicle Weight Limitations

² Must be Ordered at Time of Manufacture. If Ordered After Manufacture or Delivered, There is a Retro Charge

8-ft. TradeMaster

For F250 & F350 56" Cab-to-Axle (CA) Ford Pickup (w/ Box Delete)

COMPARTMENT OPTIONS		MSRP
CRB15	Single Raised Front Compartment w/ Bottle Brackets & Rings (Specify Side of Body). Compartment Height is 63" Maximum Bottle Size For 63" Compartment: Oxygen 55" HT x 9-1/2" Diameter. Acetylene 36-3/4" HT x 8-1/4" Diameter Includes Louvered Panel for Ventilation For SRW Bodies Only	\$2,084
CRB23	Single Raised Front Compartment w/ Bottle Brackets & Rings (Specify Side of Body). Compartment Height is 63" Maximum Bottle Size For 63" Compartment: Oxygen 55" HT x 9-1/2" Diameter. Acetylene 36-3/4" HT x 8-1/4" Diameter Includes Louvered Panel for Ventilation For DRW Bodies Only	\$2,433
CRS15	Single Raised Front Compartment w/ (2) Adjustable Shelves. (Specify Side of Body) – for SRW Bodies Only	\$1,377
CRS23	Single Raised Front Compartment w/ (2) Adjustable Shelves. (Specify Side of Body) – for DRW Bodies Only	\$1,727
SSF34X(15/23)	FIXED SHELF for Front Compartment 34" wide.	\$311 EA
PICK-UP BED REMOVAL		
Y8N	Pick-Up Bed Credit for Standard 8-foot Bed (DISCOUNT DOES NOT APPLY)	(\$210)
Y8ND	Pick-Up Bed Credit for DRW Bed (DISCOUNT DOES NOT APPLY)	(\$315)
BACKUP CAMERAS		
10,000 LB GVWR AND UNDER (MUST CHOOSE ONE)		
10,001 LB GVWR AND OVER (OPTIONAL)		
BACKUP CAMERAS ARE REQUIRE BY FMVSS 111 ON ALL TRUCKS 10,000 GVWR OR UNDER MANUFACTURED 5-1-2018 OR LATER		
MBCK-UP-CAM-LB1	For Pickup Bed Delete or Chassis Cab WITH Backup Camera Ready, and Factory Supplied Camera and Harness.	\$168
MBCK-UP-FD-872R ¹	For Pickup Bed Removal (Factory Camera Can Not Be Reused).	\$314
MBCK-UP-FD-872D ¹	For Pickup Bed Delete or Chassis Cab ONLY WITH Backup Camera Ready (No Camera and Harness Supplied).	\$314
MBCK-UP-CAM-FORD1 ¹	For Pickup Bed Delete or Chassis Cab WITHOUT Backup Camera Ready, and Factory Supplied Camera and Harness, BUT Has Factory Monitor in Dash or in Rearview Mirror.	\$558
MBCK-UP ²	For Pickup Bed Delete or Chassis Cab WITHOUT Backup Camera Ready, Factory Supplied Camera and Harness, nor Factory Monitor in Dash or in Rearview Mirror.	\$656
¹ Aftermarket Camera Selected by Harbor Based On Capability of Meeting FMVSS Will Be Used.		
² Aftermarket Camera and Monitor Selected by Harbor Based On Capability of Meeting FMVSS. Monitor Will Be Mounted Near Top Center of Dash.		

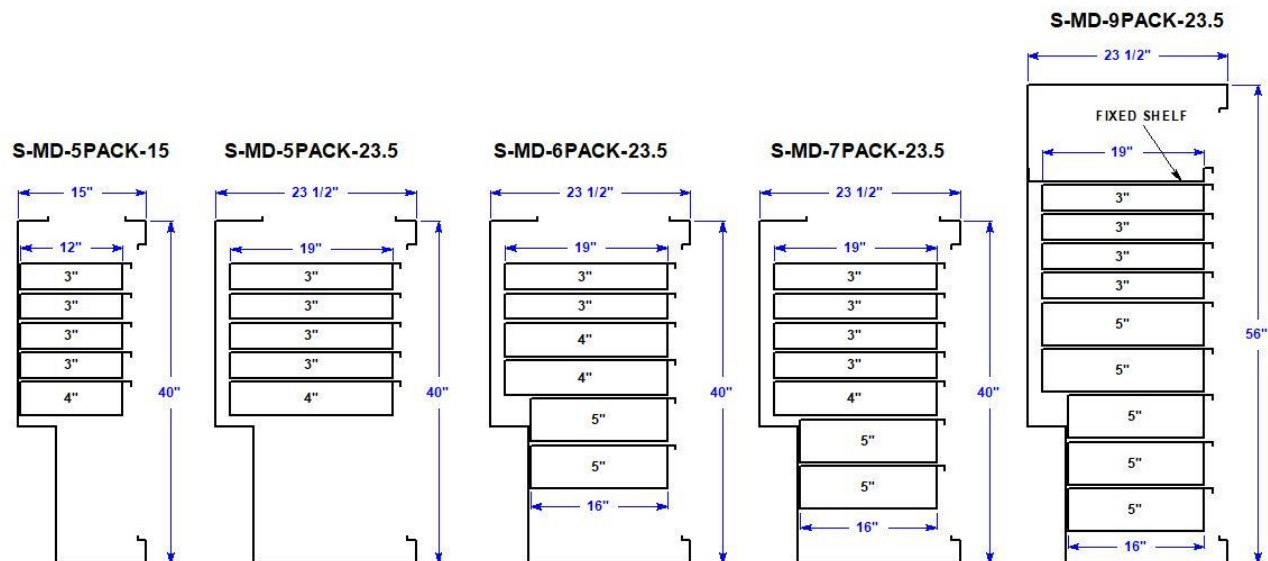
8-ft. TradeMaster

For F250 & F350 56" Cab-to-Axle (CA) Ford Pickup (w/ Box Delete)

MECHANICS DRAWER PACKAGES

FOR REGULAR & RAISED FRONT COMPARTMENTS:

S-MD-5PAK-15	Mechanics Drawer Pack (5) Roll-Out Drawers Manufactured by Harbor. Four (4) 3" and One (1) 4" Drawers 12" Deep. 250 lb. Capacity. Removable Dividers. Built Specifically for the 1 st Compartment of 8-ft. & 9-ft. SRW 40", 41", or with CRS15 High Bodies Only . This Price Per Drawer of \$446 Compares to the Average Standard Price of \$500 Per Individual Drawer. Save \$270 MSRP by Purchasing 5 Drawer Pack. (Recommend Fix Shelf Option SSF34X15 Above Drawer Pack for CRS15 High Bodies)	\$2,341
S-MD-5PAK-23.5	Mechanics Drawer Pack (5) Roll-Out Drawers Manufactured by Harbor. Four (4) 3" and One (1) 4" Drawers 19" Deep. 250 lb. Capacity. Removable Dividers. Built Specifically for the 1 st Compartment of 8-ft., 9-ft., & 11-ft. DRW 40", 41" or with CRS23 High Bodies Only . This Price Per Drawer of \$446 Compares to the Average Standard Price of \$500 Per Individual Drawer. Save \$270 MSRP by Purchasing 5 Drawer Pack. (Recommend Fix Shelf Option SSF34X23 Above Drawer Pack for CRS23 High Bodies)	\$2,341
S-MD-6PAK-23.5	Mechanics Drawer Pack (6) Roll-Out Drawers Manufactured by Harbor. Two (2) 3", Two (2) 4" and Two (2) 5" Drawers. The 3" and 4" Drawers are 19" Deep, and The 5" Drawers are 16" Deep. All 250 lb. Capacity with Removable Dividers. Built Specifically for the 1 st Compartment of 8-ft., 9-ft., & 11-ft. DRW 40", 41" or with CRS23 High Bodies Only . This Price Per Drawer of \$446 Compares to the Average Standard Price of \$507 Per Individual Drawer. Save \$364 MSRP by Purchasing 6 Drawer Pack. (Recommend Fix Shelf Option SSF34X23 Above Drawer Pack for CRS23 High Bodies)	\$2,890
S-MD-7PAK-23.5	Mechanics Drawer Pack (7) Roll-Out Drawers Manufactured by Harbor. Four (4) 3", One (1) 4" and Two (2) 5" Drawers. The 3" and 4" Drawers are 19" Deep, and The 5" Drawers are 16" Deep. All 250 lb. Capacity with Removable Dividers. Built Specifically for the 1 st Compartment of 8-ft., 9-ft., & 11-ft. DRW 40", 41" or with CRS23 High Bodies Only . This Price Per Drawer of \$446 Compares to the Average Standard Price of \$506 Per Individual Drawer. Save \$418 MSRP by Purchasing 7 Drawer Pack. (Recommend Fix Shelf Option SSF34X23 Above Drawer Pack for CRS23 High Bodies)	\$3,278
FOR RAISED FRONT COMPARTMENTS ONLY:		
S-MD-9PAK-23.5	Mechanics Drawer Pack (9) Roll-Out Drawers Manufactured by Harbor. Four (4) 3" and Five (5) 5" Drawers. The 3" and Top Two (2) 5" Drawers are 19" Deep, and The Bottom Three (3) 5" Drawers are 16" Deep. All 250 lb. Capacity with Removable Dividers. Built Specifically for the 1 st Compartment of 8-ft., 9-ft., & 11-ft. DRW with CRS23 High Bodies Only . This Price Per Drawer of \$446 Compares to the Average Standard Price of \$512 Per Individual Drawer. Save \$586 MSRP by Purchasing 9 Drawer Pack. (Recommend Fix Shelf Option SSF34X23 Above Drawer Pack for CRS23 High Bodies)	\$4,214



9-ft. TradeMaster

For F350 & F450 60" Cab-to-Axle (CA) Ford Chassis

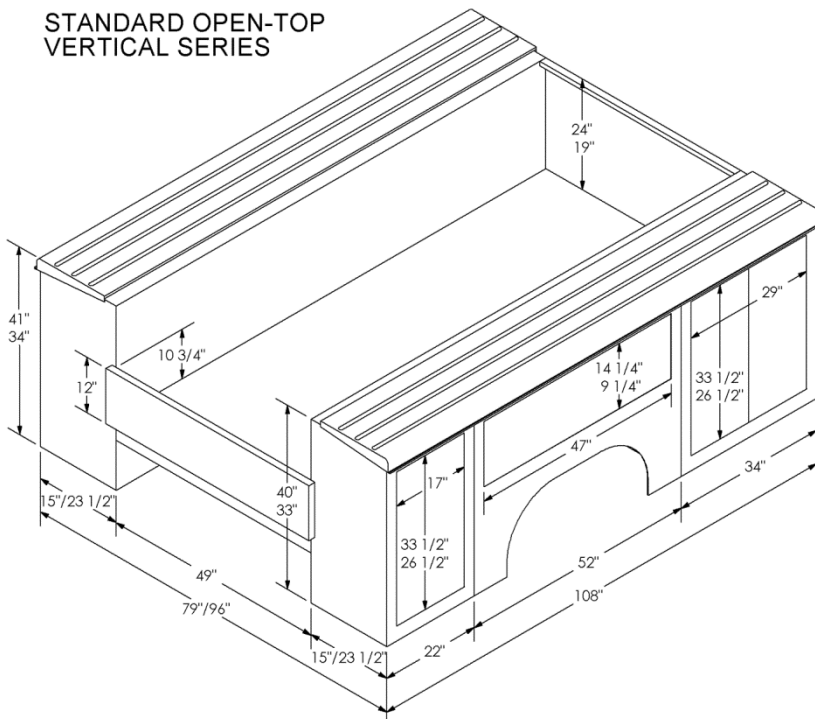
9-ft. SRW TradeMaster w/ Optional Raised Cargo Bed Enclosure, Rack and Class IV Receiver



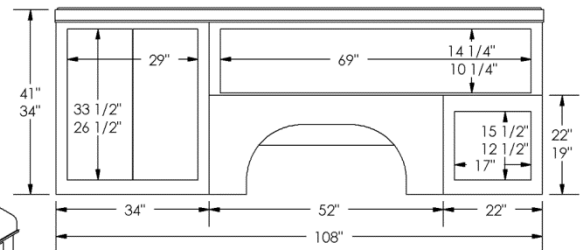
FORD 9-FT TRADEMASTER DIMENSIONS

Last Update: 09/10/2018

STANDARD OPEN-TOP
VERTICAL SERIES

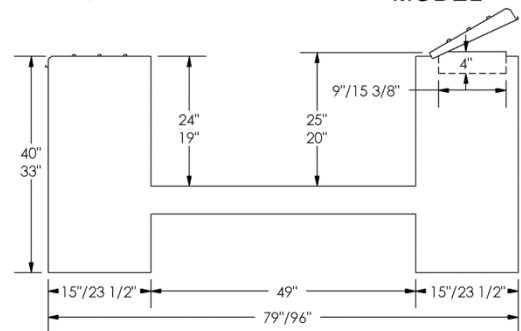


HORIZONTAL SERIES



CLOSED-TOP
MODEL

OPEN-TOP
MODEL



NOTE:

- 1) DOOR COMPARTMENT DIMENSIONS ARE THE CLEAR DOOR OPENING.
- 2) TOP VERTICAL DIMENSIONS ARE STANDARD HEIGHT BODIES, BOTTOM DIMENSIONS ARE LOW PROFILE BODIES.
- 3) DIMENSIONS WITH FORWARD SLASH ARE SRW / DRW.

9-ft. TradeMaster

For F350 & F450 60" Cab-to-Axle (CA) Ford Chassis

Application / Part Number	Body Profile	Body Length	Compt. Depth	Compt. Height	Floor Width	M.S.R.P
9-FT. TradeMaster Body w/ Std Equipment (For F350-F550 60" CA SRW CHASSIS)						
BODIES						
HT108-1541A (w/ Stainless Steel Pop-Top Lids)	Standard Height	108"	15"	41"	49"	\$8,731
HT108-1534A (w/ Stainless Steel Pop-Top Lids)	Low Profile	108"	15"	34"	49"	\$8,731
HT108-1541AF (w/ Tredbrite Pop-Top Lids)	Standard Height	108"	15"	41"	49"	\$9,080
HT108-1534AF (w/ Tredbrite Pop-Top Lids)	Low Profile	108"	15"	34"	49"	\$9,080
HT108-1540A (w/ Ribbed Closed Tops)	Standard Height	108"	15"	40"	49"	\$8,623
HT108-1533A (w/ Ribbed Closed Tops)	Low Profile	108"	15"	33"	49"	\$8,623
9-FT. TradeMaster for F350 & F450 60" CA DRW CHASSIS						
BODIES						
HT108-2341A (w/ Stainless Steel Pop-Top Lids)	Standard Height	108"	23 1/2"	41"	49"	\$8,993
HT108-2334A (w/ Stainless Steel Pop-Top Lids)	Low Profile	108"	23 1/2"	34"	49"	\$8,871
HT108-2341AF (w/ Tredbrite Pop-Top Lids)	Standard Height	108"	23 1/2"	41"	49"	\$9,345
HT108-2334AF (w/ Tredbrite Pop-Top Lids)	Low Profile	108"	23 1/2"	34"	49"	\$9,223
HT108-2340A (w/ Ribbed Closed Tops)	Standard Height	108"	23 1/2"	40"	49"	\$8,776
HT108-2333A (w/ Ribbed Closed Tops)	Low Profile	108"	23 1/2"	33"	49"	\$8,776
STANDARD EQUIPMENT						
Y09AWHITE	Paint Harbor White					INC
Z09-F/BRUL(79/96)-08	Mount w/ Incandescent Lights & Recess Bumper w/ 8" Step					INC
PS01 or P01	PS03 Stainless Steel Gravel Guards (w/ Stainless Steel Lids) or P03 Tredbrite Alum. Gravel Guards (w/ Tredbrite Lids) – SRW Only					INC
PS03 or P03	PS03 Stainless Steel Gravel Guards (w/ Stainless Steel Lids) or P03 Tredbrite Alum. Gravel Guards (w/ Tredbrite Lids) – DRW Only					INC
PAINT AND MOUNT OPTIONS						
Y09RED ¹	Single Stage Non Clear Coat F1 Red Only					\$1,869
Y09BLACK ¹	Single Stage Non Clear Coat Harbor Black					\$3,114
Y09METALLIC ¹	Multiple Stage Clear Coat Metallic					-
Z09-F/BRUL79-08-LED	Mount, Standard w/ LED Stop, Tail, Turn, Clearance, License Plate and 3-Bar Lights (SRW)					\$188
Z09-F/BRUL96-08-LED	Mount, Standard w/ LED Stop, Tail, Turn, Clearance, License Plate and 3-Bar Lights (DRW)					\$291
¹ Perfect Color Match with Cab NOT Guaranteed						

¹ Perfect Color Match with Cab NOT Guaranteed

9-ft. TradeMaster

For F350 & F450 60" Cab-to-Axle (CA) Ford Chassis

RACKS & RACK ACCESSORIES

(All racks have swing-away rear bar, 4 rope hooks & removable center bars over bed area)

RKTFL108-1541-R ¹	"Side Loader Rack"—Tapered-Leg Rack w/ 4" Drop-Down Longitudinal Bars, for Regular Cab Only	\$1,730
RKTFL108-1541-E ¹	"Side Loader Rack"—Tapered-Leg Rack w/ 4" Drop-Down Longitudinal Bars, for Super and Super Crew Cab	\$1,730
RKTOFB	Extend Any Standard Rack Above to Over Front Bumper	\$1,168
RK35	Conduit Box With Rear Door (123"L x 6"H x 9.5 " W)	\$784
RK36FE	Conduit Box Fully Enclosed With Rear Hinged Door & Hinged Lid. (123"Lx6"Hx9.5"W)	\$1,249
RK50	Two (2) Conduit Pockets	\$691
RK60	Expanded Metal Roof Shield	\$722
RK61	14 GA. Galvanized Steel Roof Shield Punched on Turret Press	\$577
RK65	Front Stop for Rack	\$276
RK90	Stainless Covers for Cross Bars on Racks (Price per Cross Bar)	\$201
MSTRAPS	Two (2) Rack Straps – Ratchets up to 500 lbs. Tension (Recommended with Conduit Pockets to Firmly Secure Materials or Ladders)	\$379

SAFETY & SECURITY OPTIONS

LOK-AOK-FORD-9FT	Harbor ALL-ONE-KEY Door Locks Keyed at Our Factory to Match the Vehicle Ignition Key. N/A to D32 Master Lock Option. Separate Key Required for D32 Master Lock.	\$190
D32	Master Lock (Internal Stainless Steel Security Bars Lock All Doors). Cannot Use A-O-K Locks. Requires Separate Lock and Key	\$1,334
D32-HANDLE	Master Lock with Rear Handle (Internal Stainless Steel Security Bars Lock All Doors). Has Separate Lock and Key from A-O-K Lock. Otherwise, All Keys Match.	\$1,334
CBE108-2 ²	2-Piece Cargo Bed Enclosure with Flip-Up End Gate	\$1,409
CBE108-3 ²	3-Piece Cargo Bed Enclosure with Flip-Up End Gate	\$1,613
CBE108-3-56 ²	3-Piece Cargo Bed Enclosure with Rear Barn Doors (for HT108-56" High)	\$2,670
CBR108-2 ²	2-Piece Raised Cargo Bed Enclosure with Rear Barn Doors	\$2,670
CBR108-3 ²	3-Piece Raised Cargo Bed Enclosure with Rear Barn Doors	\$3,029
MLSBRB-LED	Rotating LED Strobe on Mounting Pad i.e. Mounts on Rack or Headboard Only, Not Roof. Lighted Cab Switch Included. ECCO 7965 LED Light, or Equivalent.	\$656
MLSBRB-LED-POLE	Rotating LED Strobe with Mounting Pad on Separate Pedestal Pole. Lighted Cab Switch Included. ECCO 7965 Light, or Equivalent.	\$754
MLTBAR-C	Light Bar Mounted on Separate Rack Behind Cab. Wired Through Back Bottom of Cab, Not Through Headliner. Whelen TAC F85LH, or Equivalent.	\$2,598
MCBC03	Chock Block Holder in Wheel Well. (Recommended on Curbside Only as Safest Location).	\$850
MALARM	Back-up Alarm (Preco 380P or Equivalent)	\$380

¹ Indicate Chassis as Regular Cab, Double Cab, or Crew Cab.

² Remember to Add One Additional LOK-AOK (To Make the Total Quantity 7) if Adding AOK Locks to Body

9-ft. TradeMaster

For F350 & F450 60" Cab-to-Axle (CA) Ford Chassis

RECEIVERS, HITCHES & LIFT GATES		
MREC-IV ¹	Class IV Receiver – 2" Tube; A-Braced to Frame(10,000 lb. Gross Trailer Wt., 1,000 lb. Tongue Wt)	\$551
MREC-V ¹	Class V Receiver – 2 ½" Tube; A-Braced to Frame(15,000 lb. Gross Trailer Wt., 1,500 lb. Tongue Wt) Includes 2" Insert.	\$731
MREC-VI ¹	Class VI Receiver – 2 ½" Tube; A-Braced to Frame (20,000 lb. Gross Trailer Wt., 2,000 lb. Tongue Wt) Includes 2" Insert.	\$816
MHITCH01	Kerins K200 multi hitch with K750 Adaptor	\$308
M7PRONG	Standard 7-Prong Trailer Connector	\$218
M7/4PRONG	Standard 7/4-Prong Trailer Connector	\$319
G2-54-1342TP38	Tommy Gate Liftgate, 1300 lb. Lift Cap., 49x38 Platform w/4" Taper-(w/ Bumperettes add \$654)	\$5,685
G2-54-1342TP42	Tommy Gate Liftgate, 1300 lb. Lift Cap., 49x42 Platform w/7" Taper-(w/ Bumperettes add \$654)	\$5,818
G2-54-1642TP38	Tommy Gate Liftgate, 1600 lb. Lift Cap., 49x38 Platform w/4" Taper-(w/ Bumperettes add \$654)	\$5,986
G2-54-1642TP42	Tommy Gate Liftgate, 1600 lb. Lift Cap., 49x42 Platform w/7" Taper-(w/ Bumperettes add \$654)	\$6,119
BUMPERETTE-()	Bumperettes (Only Applies when Ordering Liftgate)	\$693
ADDITIONAL TRADEMASTER OPTIONS		
C06	Delete Front Compartment. Extend Floor to Exterior Edge of Body. Add UnderDeck Compartment Below Floor.	\$1,376
C25	Louver the Inner and Outer Skins of a Single Door for Ventilation	\$118
C26	Reinforce Top of First Compartment With 10 GA. Plate for Mounting Additional Equipment (e.g. Compressors).	\$528
C34	Transverse Compartment Built Off #1 Compartment.-Single Side Access (Choose Street Side or Curb Side)	\$718
C40	Transverse Compartment Built Off #1 Compartment.-Dual Side Access	\$1,043
C41	(1) 250 lb. Roll-Out Tray on (12) Heavy-Duty Bearings for Transverse Compartment (For Single or Dual Side Access)	\$1,744
F98	Reinforce Floor Behind Bulkhead to Carry 750 lb. of Additional Equipment, Machinery or Fluid Tanks	\$651
MACTIRE	Spare Tire Carrier Mount Behind Bulkhead Only. Not attached to Compartments Walls Due to Potential Water Leaks in Compartment	\$298
MBL09 ²	Bed Liner for 9-ft Body. Lines the Bed Area, Back Wrappers, Bulkhead and Tailgate.	\$1,120
METRK09	E Track, One Row Mount Along Each Side of Bed Area. Must Specify Location Height in Bed Area.	\$715
MGFI	Additional GFI Outlet Must be Wired to Inverter (Requires MINVTR)	\$319
MINVTR	Inverter w/ 115 Volt Outlet on Inverter Wagon Inverter 3000 Watts Continuous True Weighted Power (6,000 Watts Peak Surge Power. 115 Volts) Standard Mount Horizontal on Driver's Side Compt	\$2,024
MMUD2430	Mud Flaps w/ Harbor Logo for Trade Master Bodies. 24x30 but Cut Down to Fit Wheel Area.	\$155
MPIPE	Heavy Duty Pipe Holder for Front or Rear End Panel. Only (1) Required When Used in Conjunction w/ Rear Mount Vise Bracket)	\$232
MVISE	Heavy Duty Stainless Steel Vise Bracket on Rear End Panel, 12"x7" for DRW only (not for SRW Bodies or With Lift Gate or Barn Doors).	\$377
MVISE-10	Heavy Duty Stainless Steel Vise Bracket on Rear End Panel, 10"x7" for SRW or DRW Bodies.	\$377
MWCB5GAL	5 Gallon Water Cask Platform and Bracket Mounted on Rear End Panel.	\$649
TG19	19' Tailgate In Lieu of Standard Height 12" Tailgate. For Use on Standard Floor Widths Only.	\$154
TGA10GA	Tailgate, Standard Size Reinforced with Smooth 10 GA. Inner Panel. Applies to Standard Size Tailgates Only	\$238

¹ Reference Vehicle GCWR for Specific Vehicle Weight Limitation

² Must be Ordered at Time of Manufacture. If Ordered After Delivery, There is a Retro Charge

9-ft. TradeMaster

For F350 & F450 60" Cab-to-Axle (CA) Ford Chassis

COMPARTMENT OPTIONS		MSRP
CRB15	Single Raised Front Compartment w/ Bottle Brackets & Rings (Specify Side of Body). Compartment Height is 63" Maximum Bottle Size For 63" Compartment: Oxygen 55" HT x 9-1/2" Diameter. Acetylene 36-3/4" HT x 8-1/4" Diameter Includes Louvered Panel for Ventilation For SRW Bodies Only	\$1,266
CRB23	Single Raised Front Compartment w/ Bottle Brackets & Rings (Specify Side of Body). Compartment Height is 63" Maximum Bottle Size For 63" Compartment: Oxygen 55" HT x 9-1/2" Diameter. Acetylene 36-3/4" HT x 8-1/4" Diameter Includes Louvered Panel for Ventilation For DRW Bodies Only	\$2,458
CRS15	Single Raised Front Compartment w/ (2) Adjustable Shelves. (Specify Side of Body) – SRW Bodies Only	\$1,390
CRS23	Single Raised Front Compartment w/ (2) Adjustable Shelves. (Specify Side of Body) – DRW Bodies Only	\$1,746
SSF34X(15/23)	FIXED SHELF for Front Compartment 34" wide.	\$313 EA
PICK-UP BED REMOVAL		
Y8N	Pick-Up Bed Credit for Standard 8-foot Bed (DISCOUNT DOES NOT APPLY)	(\$250)
Y8ND	Pick-Up Bed Credit for DRW Bed (DISCOUNT DOES NOT APPLY)	(\$350)
BACKUP CAMERAS		
10,000 LB GVWR AND UNDER (MUST CHOOSE ONE)		
10,001 LB GVWR AND OVER (OPTIONAL)		
BACKUP CAMERAS ARE REQUIRE BY FMVSS 111 ON ALL TRUCKS 10,000 GVWR OR UNDER MANUFACTURED 5-1-2018 OR LATER		
MBCK-UP-CAM-LB1	For Chassis Cab WITH Backup Camera Ready, and Factory Supplied Camera and Harness.	\$177
MBCK-UP-FD-872D ¹	For Chassis Cab ONLY WITH Backup Camera Ready (No Camera and Harness Supplied).	\$318
MBCK-UP-CAM-FORD1 ¹	For Chassis Cab WITHOUT Backup Camera Ready, and Factory Supplied Camera and Harness, BUT Has Factory Monitor in Dash or in Rearview Mirror.	\$587
MBCK-UP ²	For Chassis Cab WITHOUT Backup Camera Ready, Factory Supplied Camera and Harness, nor Factory Monitor in Dash or in Rearview Mirror.	\$691
¹ Aftermarket Camera Selected by Harbor Based On Capability of Meeting FMVSS Will Be Used.		
² Aftermarket Camera and Monitor Selected by Harbor Based On Capability of Meeting FMVSS. Monitor Will Be Mounted Near Top Center of Dash.		

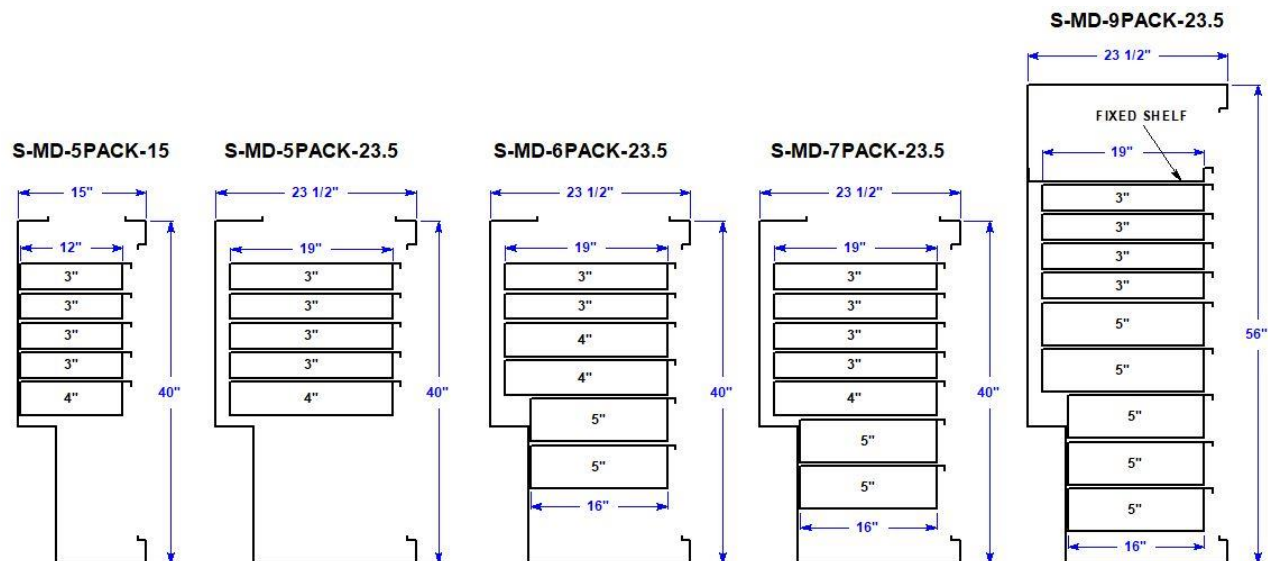
9-ft. TradeMaster

For F350 & F450 60" Cab-to-Axle (CA) Ford Chassis

MECHANICS DRAWER PACKAGES

FOR REGULAR & RAISED FRONT COMPARTMENTS:

S-MD-5PAK-15	Mechanics Drawer Pack (5) Roll-Out Drawers Manufactured by Harbor. Four (4) 3" and One (1) 4" Drawers 12" Deep. 250 lb. Capacity. Removable Dividers. Built Specifically for the 1 st Compartment of 8-ft. & 9-ft. SRW 40", 41", or with CRS15 High Bodies Only . This Price Per Drawer of \$446 Compares to the Average Standard Price of \$500 Per Individual Drawer. Save \$270 MSRP by Purchasing 5 Drawer Pack. (Recommend Fix Shelf Option SSF34X15 Above Drawer Pack for CRS15 High Bodies)	\$2,363
S-MD-5PAK-23.5	Mechanics Drawer Pack (5) Roll-Out Drawers Manufactured by Harbor. Four (4) 3" and One (1) 4" Drawers 19" Deep. 250 lb. Capacity. Removable Dividers. Built Specifically for the 1 st Compartment of 8-ft., 9-ft., & 11-ft. DRW 40", 41" or with CRS23 High Bodies Only . This Price Per Drawer of \$446 Compares to the Average Standard Price of \$500 Per Individual Drawer. Save \$270 MSRP by Purchasing 5 Drawer Pack. (Recommend Fix Shelf Option SSF34X23 Above Drawer Pack for CRS23 High Bodies)	\$2,363
S-MD-6PAK-23.5	Mechanics Drawer Pack (6) Roll-Out Drawers Manufactured by Harbor. Two (2) 3", Two (2) 4" and Two (2) 5" Drawers. The 3" and 4" Drawers are 19" Deep, and The 5" Drawers are 16" Deep. All 250 lb. Capacity with Removable Dividers. Built Specifically for the 1 st Compartment of 8-ft., 9-ft., & 11-ft. DRW 40", 41" or with CRS23 High Bodies Only . This Price Per Drawer of \$446 Compares to the Average Standard Price of \$507 Per Individual Drawer. Save \$364 MSRP by Purchasing 6 Drawer Pack. (Recommend Fix Shelf Option SSF34X23 Above Drawer Pack for CRS23 High Bodies)	\$2,836
S-MD-7PAK-23.5	Mechanics Drawer Pack (7) Roll-Out Drawers Manufactured by Harbor. Four (4) 3", One (1) 4" and Two (2) 5" Drawers. The 3" and 4" Drawers are 19" Deep, and The 5" Drawers are 16" Deep. All 250 lb. Capacity with Removable Dividers. Built Specifically for the 1 st Compartment of 8-ft., 9-ft., & 11-ft. DRW 40", 41" or with CRS23 High Bodies Only . This Price Per Drawer of \$446 Compares to the Average Standard Price of \$506 Per Individual Drawer. Save \$418 MSRP by Purchasing 7 Drawer Pack. (Recommend Fix Shelf Option SSF34X23 Above Drawer Pack for CRS23 High Bodies)	\$3,309
FOR RAISED FRONT COMPARTMENTS ONLY:		
S-MD-9PAK-23.5	Mechanics Drawer Pack (9) Roll-Out Drawers Manufactured by Harbor. Four (4) 3" and Five (5) 5" Drawers. The 3" and Top Two (2) 5" Drawers are 19" Deep, and The Bottom Three (3) 5" Drawers are 16" Deep. All 250 lb. Capacity with Removable Dividers. Built Specifically for the 1 st Compartment of 8-ft., 9-ft., & 11-ft. DRW with CRS23 High Bodies Only . This Price Per Drawer of \$446 Compares to the Average Standard Price of \$512 Per Individual Drawer. Save \$586 MSRP by Purchasing 9 Drawer Pack. (Recommend Fix Shelf Option SSF34X23 Above Drawer Pack for CRS23 High Bodies)	\$4,254



11-ft. TradeMaster & 11-ft. Maximizer

For F350, F450 & F550 84" Cab-to-Axle (CA) Ford Chassis

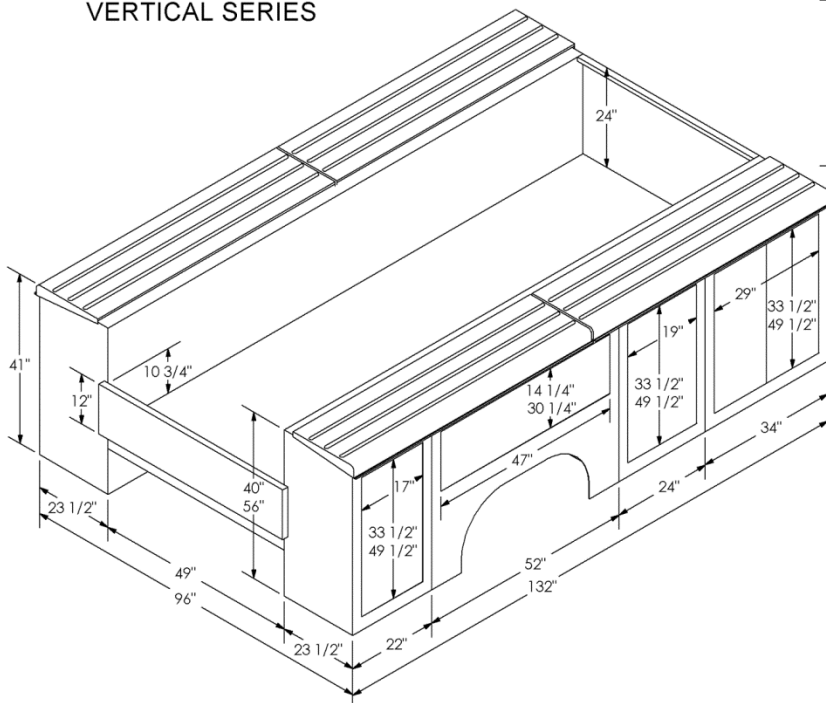
11-Ft. TradeMaster w/ Class IV Rec. Option / 11-Ft. Maximizer for Maximum Storage



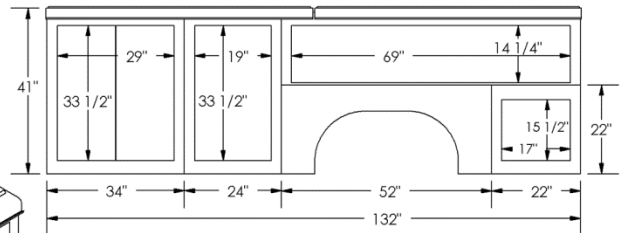
FORD 11-FT TRADEMASTER AND MAXIMIZER DIMENSIONS

Last Update: 09/10/2018

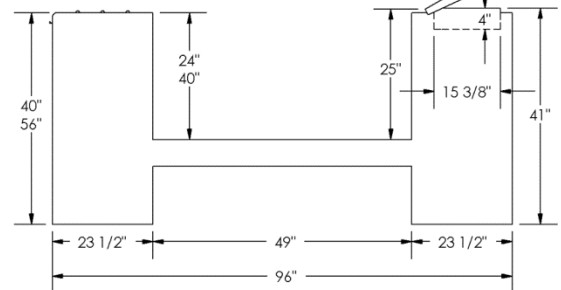
STANDARD OPEN-TOP VERTICAL SERIES



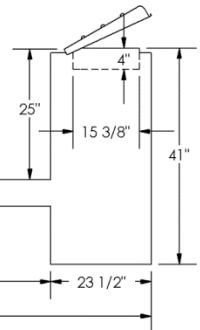
HORIZONTAL SERIES



CLOSED-TOP MODEL



OPEN-TOP MODEL



NOTE:

- 1) DOOR COMPARTMENT DIMENSIONS ARE THE CLEAR DOOR OPENING.
- 2) TOP VERTICAL DIMENSIONS ARE STANDARD HEIGHT BODIES, BOTTOM DIMENSIONS ARE MAXIMIZER BODIES.
- 3) COMPARTMENT DEPTH DIMENSIONS SHOWN ARE STANDARD.

11-ft. TradeMaster & 11-ft. Maximizer

For F350, F450 & F550 84" Cab-to-Axle (CA) Ford Chassis

Application / Part Number	Body Profile	Body Length	Compt. Depth	Compt. Height	Floor Width	M.S.R.P
11-Ft. TradeMaster w/ Standard Equipment (For F350-F550 84" CA)						
BODIES						
HT132-2341A (w/ Stainless Steel Pop-Top Lids)	Standard Height	132"	23-1/2"	41"	49"	\$11,032
HT132-2341AF (w/ Tredbrite Pop-Top Lids)	Standard Height	132"	23-1/2"	41"	49"	\$11,431
HT132-2340A (w/ Ribbed Closed Tops) (low profile bodies available at no extra charge)	Standard Height	132"	23-1/2"	40"	49"	\$10,923
11-Ft. Maximizer with 56" High Compartments (For F450 & F550 84" CA)						
BODIES						
HT132-2356A (w/ Ribbed Closed Tops)	Standard Height	132"	23-1/2"	56"	49"	\$13,152
STANDARD EQUIPMENT						
Y11AWHITE	Paint Harbor White					INC
Z11-F/BRUL96-08	Mount w/ Incandescent Lights & Recess Bumper with 8" Step					INC
LOK-PB8	Harbor Push Button Locks w/ "Red Band Open" Indicator					INC
PS03 or P03	PS03 Stainless Steel Gravel Guards (w/ Stainless Steel Lids) or P03 Treadbright Alum. Gravel Guards (w/ Treadbright Aluminum Lids)					INC
PAINT AND MOUNT						
Y11RED-FORD ¹	Single Stage Non Clear Coat F1 Red Only					\$2,246
Y11BLACK ¹	Single Stage Non Clear Coat Harbor Black					\$3,593
Y11METALLIC ¹	Multiple Stage Clear Coat Metallic					-
Z11-F/BRUL96-08-LED	Mount, Standard With LED Stop, Tail, Turn, Clearance, License Plate and 3-Bar Lights					\$313
¹ Perfect Color Match with Cab NOT Guaranteed						

NOTES: The Maximizer has all the industry-first qualities that separate TradeMaster from the competition, plus the added benefit of 56" high compartments, that provide an eye-popping 40% more compartment storage!

11-ft. TradeMaster & 11-ft. Maximizer

For F350, F450 & F550 84" Cab-to-Axle (CA) Ford Chassis

RACKS & RACK ACCESSORIES

(All Racks Have Swing-Away Rear Bar, 4 Rope Hooks & Removable Center Bars on Bed Area)

RKTFL132-1541-R ¹	"Side Loader Rack"—Tapered-Leg Rack w/ 4" Drop-Down Longitudinal Bars, for Regular Cab Only	\$2,161
RKTFL132-1541-E ¹	"Side Loader Rack"—Tapered-Leg Rack w/ 4" Drop-Down Longitudinal Bars, for Super and Super Crew Cab	\$2,161
RKTOFB	Extend Any Standard Rack Above to Over Front Bumper	\$1,235
RK35	Conduit Box With Rear Door (123"L x 6"H x 9.5"W)	\$805
RK36FE	Conduit Box Fully Enclosed With Rear Hinged Door & Hinged Lid. (123"Lx6"Hx9.5"W)	\$1,255
RK50	Two (2) Conduit Pockets	\$735
RK60	Expanded Metal Roof Shield	\$735
RK61	14 GA. Galvanized Steel Roof Shield Punched on Turret Press	\$618
RK65	Front Stop for Rack	\$229
RK90	Stainless Covers for Cross Bars on Racks (Price per Cross Bar)	\$209
MSTRAPS	Two (2) Rack Straps – Ratchets up to 500 lbs. Tension (Recommended with Conduit Pockets to Firmly Secure Materials or Ladders)	\$387

SAFETY & SECURITY OPTIONS

LOK-AOK-FORD-11FT	Harbor ALL-ONE-KEY Door Locks Keyed at Our Factory to Match the Vehicle Ignition Key. Separate Key Required for D33-HANDLE Master Lock Option.	\$274
D33-HANDLE	Master Lock with Rear Handle (Internal Stainless Steel Security Bars Lock All Doors). Has Separate Lock and Key from Push-Button or A-O-K Lock. If Ordered With Harbor Standard Style Lock, All Keys Match.	\$1,381
CBE132-3 ²	3-Piece Cargo Bed Enclosure with Flip-Up End Gate	\$1,918
CBE132-3-56 ²	3-Piece Cargo Bed Enclosure with Rear Barn Doors (for HT132-56" High)	\$3,685
CBR132-3 ²	3-Piece Raised Cargo Bed Enclosure with Rear Barn Doors	\$3,685
MLSBRB-LED	Rotating LED Strobe on Mounting Pad i.e. Mounts on Rack or Headboard Only, Not Roof. Lighted Cab Switch Included. ECCO 7965 LED Light, or Equivalent.	\$737
MLSBRB-LED-POLE	Rotating LED Strobe with Mounting Pad on Separate Pedestal Pole. Lighted Cab Switch Included. ECCO 7965 Light, or Equivalent.	\$782
MLTBAR-C	Light Bar Mounted on Separate Rack Behind Cab. Wired Through Back Bottom of Cab, Not Through Headliner. Whelen TAC F85LH, or Equivalent.	\$2,781
MCBC03	Chock Block Holder in Wheel Well. Recommended on Curbside as Safest Location.	\$964
MALARM	Back-up Alarm (Preco 380P or Equivalent)	\$524

¹ Indicate Chassis as Regular Cab, Double Cab, or Crew Cab.

² Remember to Add One Additional LOK-AOK (Make Quantity 7) if Adding AOK Locks to Body

11-ft. TradeMaster & 11-ft. Maximizer

For F350, F450 & F550 84" Cab-to-Axle (CA) Ford Chassis

RECEIVERS, HITCHES & LIFT GATES		
MREC-IV ¹	Class IV Receiver – 2" Tube; A-Braced to Frame(10,000 lb. Gross Trailer Wt., 1,000 lb. Tongue Wt)	\$649
MREC-V ¹	Class V Receiver – 2 ½" Tube; A-Braced to Frame (15,000 lb. Gross Trailer Wt., 1,500 lb. Tongue Wt) Includes 2" Insert.	\$769
MREC-VI ¹	Class VI Receiver – 2 ½" Tube; A-Braced to Frame (20,000 lb. Gross Trailer Wt., 2,000 lb. Tongue Wt) Includes 2" Insert.	\$867
MHITCH01	Kerins K200 multi hitch with K750 Adaptor	\$346
M7PRONG	Standard 7-Prong Trailer Connector	\$222
M7/4PRONG	Standard 7/4-Prong Trailer Connector	\$326
G2-54-1342TP38	Tommy Gate Liftgate, 1600 lb. Lift Capacity, 49x38 Platform w/4" Taper–(w/Bumperettes add \$654)	\$5,685
G2-54-1342TP42	Tommy Gate Liftgate, 1600 lb. Lift Capacity, 49x42 Platform w/7" Taper—(w/Bumperettes add \$654)	\$5,825
G2-54-1642TP38	Tommy Gate Liftgate, 1600 lb. Lift Capacity, 49x38 Platform w/4" Taper–(w/ Bumperettes add \$654)	\$5,944
G2-54-1642TP42	Tommy Gate Liftgate, 1600 lb. Lift Capacity, 49x42 Platform w/7" Taper–(w/ Bumperettes add \$654)	\$6,214
BUMPERETTE-()	Bumperettes (Only Applies when Ordering Liftgate)	\$701
ADDITIONAL TRADEMASTER OPTIONS		
C06	Delete Front Compartment. Extend Floor to Exterior Edge of Body. Add UnderDeck Compartment Below Floor Reinforced to Add Equipment up to 750 lb.	\$1,402
C25	Louver the Inner and Outer Skins of a Single Door for Ventilation	\$119
C26	Reinforce Top of First Compartment With 10 GA. Plate for Mounting Additional Equipment (e.g. Compressors).	\$546
C34	Transverse Compartment Built Off #1 Compartment.-Single Side Access (Choose Street Side or Curb Side)	\$729
C40	Transverse Compartment Built Off #1 Compt.-Dual Side Access	\$1,089
C41	One (1) 250 lb. Roll-Out Tray on (12) Heavy-Duty Bearings for Transverse Compartment (For Single or Dual Side Access)	\$1,848
F98	Reinforce Floor Behind Bulkhead to Carry 750 lb. of Additional Equipment, Machinery or Fluid Tanks	\$734
MACTIRE	Spare Tire Carrier Mount Behind Bulkhead Only. Not attached to Compartment Wall Due to Potential Water Leaks in Compartment	\$327
MBL11 ²	Bed Liner for 11-ft Body. Lines the Bed Area, Back Wrappers, Bulkhead and Tailgate. ¹	\$1,239
METR11	E Track, One Row Mount Along Each Side of Bed Area. Must Specify Location Height in Bed Area.	\$1,118
MGFI	Additional GFI Outlet Must be Wired to Inverter (Requires MINVTR)	\$407
MINVTR	Inverter w/ 115 Volt Outlet on Inverter Wagan Inverter 3000 Watts Continuous True Weighted Power (6,000 Watts Peak Surge Power. 115 Volts) Standard Mount Horizontal on Driver's Side Compartment.	\$1,984
MMUD2430	Mud Flaps w/ Harbor Logo for Trade Master Bodies. 24x30 but Cut Down to Fit Wheel Area.	\$152
MPIPE	Heavy Duty Pipe Holder for Front or Rear End Panel. Only (1) Required When Used in Conjunction w/ Rear Mount Vise Bracket)	\$311
MVISE	Heavy Duty Stainless Steel Vise Bracket on Rear End Panel, 12"x7" for DRW only (not for SRW Bodies or With Lift Gate or Barn Doors).	\$425
MVISE-10	Heavy Duty Stainless Steel Vise Bracket on Rear End Panel, 10"x7" for SRW or DRW Bodies.	\$401
MWCB5GAL	5 Gallon Water Cask Platform and Bracket Mounted on Rear End Panel.	\$639
TG19	19' Tailgate In Lieu of Standard Height 12" Tailgate. For Use on Standard Floor Widths Only.	\$208
TGA10GA	Tailgate, Standard Size Reinforced with Smooth 10 GA. Inner Panel. Applies to Standard Size Tailgates Only	\$227

¹ Reference Vehicle GCWR for Specific Vehicle Weight Limitation

² Must be Ordered at Time of Manufacture. If Ordered After Manufactured or Delivered, There Will be a Retro Charge

11-ft. TradeMaster & 11-ft. Maximizer

For F350, F450 & F550 84" Cab-to-Axle (CA) Ford Chassis

COMPARTMENT OPTIONS		MSRP
CRB15	Single Raised Front Compartment w/ Bottle Brackets & Rings (Specify Side of Body). Compartment Height is 63" Maximum Bottle Size For 63" Compartment: Oxygen 55" HT x 9-1/2" Diameter. Acetylene 36-3/4" HT x 8-1/4" Diameter Includes Louvered Panel for Ventilation <i>For SRW Bodies Only</i>	\$2,245
CRB23	Single Raised Front Compartment w/ Bottle Brackets & Rings (Specify Side of Body). Compartment Height is 63" Maximum Bottle Size For 63" Compartment: Oxygen 55" HT x 9-1/2" Diameter. Acetylene 36-3/4" HT x 8-1/4" Diameter Includes Louvered Panel for Ventilation <i>For DRW Bodies Only</i>	\$2,628
CRS15	Single Raised Front Compartment w/ (2) Adjustable Shelves. (Specify Side of Body) – SRW <i>Bodies Only</i>	\$1,587
CRS23	Single Raised Front Compartment w/ (2) Adjustable Shelves. (Specify Side of Body) – DRW <i>Bodies Only</i>	\$1,867
SSF34X23	FIXED SHELF for Front Compartment 34" wide.	\$318 EA
BACKUP CAMERAS 10,001 LB GVWR AND OVER (OPTIONAL) ALL 84" CA ARE OVER 10,000 LB GVWR, BACKUP CAMERAS ARE OPTIONAL		
MBCK-UP-CAM-LB1	For Chassis Cab WITH Backup Camera Ready, and Factory Supplied Camera and Harness.	\$188
MBCK-UP-FD-872D ¹	For Chassis Cab ONLY WITH Backup Camera Ready (No Camera and Harness Supplied).	\$327
MBCK-UP-CAM-FORD1 ¹	For Chassis Cab WITHOUT Backup Camera Ready, and Factory Supplied Camera and Harness, BUT Has Factory Monitor in Dash or in Rearview Mirror.	\$624
MBCK-UP ²	For Chassis Cab WITHOUT Backup Camera Ready, Factory Supplied Camera and Harness, nor Factory Monitor in Dash or in Rearview Mirror.	\$675
¹ Aftermarket Camera Selected by Harbor Based On Capability of Meeting FMVSS Will Be Used. ² Aftermarket Camera and Monitor Selected by Harbor Based On Capability of Meeting FMVSS. Monitor Will Be Mounted Near Top Center of Dash.		

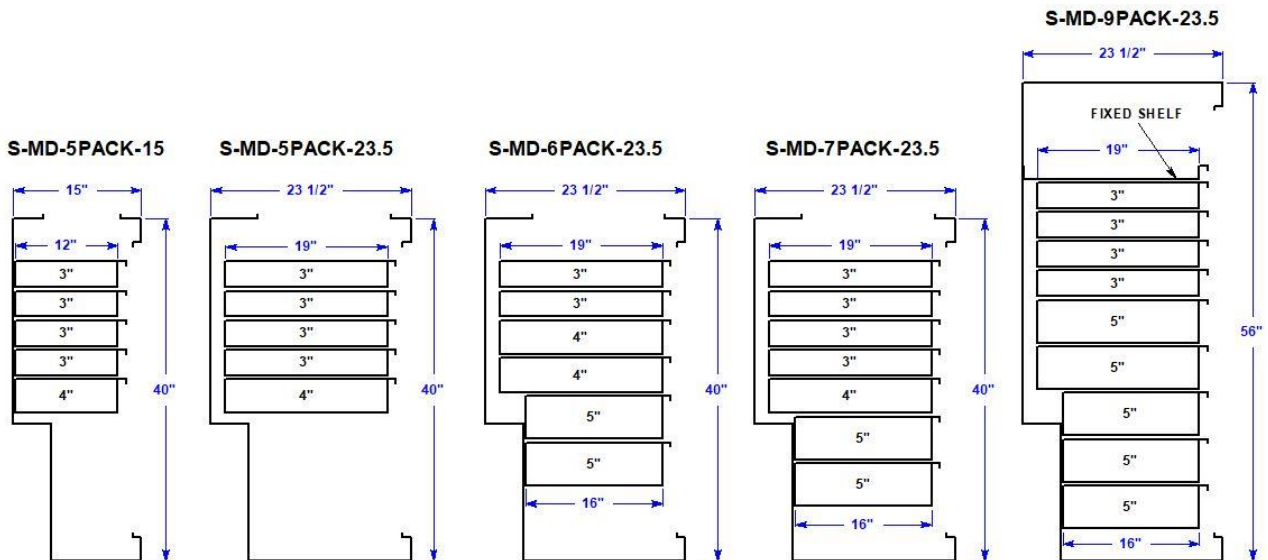
11-ft. TradeMaster & 11-ft. Maximizer

For F350, F450 & F550 84" Cab-to-Axle (CA) Ford Chassis

MECHANICS DRAWER PACKAGES

FOR REGULAR & RAISED FRONT COMPARTMENTS:

S-MD-5PAK-23.5	Mechanics Drawer Pack (5) Roll-Out Drawers Manufactured by Harbor. Four (4) 3" and One (1) 4" Drawers 19" Deep. 250 lb. Capacity. Removable Dividers. Built Specifically for the 1 st Compartment of 8-ft., 9-ft., & 11-ft. DRW 40", 41" or with CRS23 High Bodies Only . This Price Per Drawer of \$446 Compares to the Average Standard Price of \$500 Per Individual Drawer. Save \$270 MSRP by Purchasing 5 Drawer Pack. (Recommend Fix Shelf Option SSF34X23 Above Drawer Pack for CRS23 High Bodies)	\$2,625
S-MD-6PAK-23.5	Mechanics Drawer Pack (6) Roll-Out Drawers Manufactured by Harbor. Two (2) 3", Two (2) 4" and Two (2) 5" Drawers. The 3" and 4" Drawers are 19" Deep, and The 5" Drawers are 16" Deep. All 250 lb. Capacity with Removable Dividers. Built Specifically for the 1 st Compartment of 8-ft., 9-ft., & 11-ft. DRW 40", 41" or with CRS23 High Bodies Only . This Price Per Drawer of \$446 Compares to the Average Standard Price of \$507 Per Individual Drawer. Save \$364 MSRP by Purchasing 6 Drawer Pack. (Recommend Fix Shelf Option SSF34X23 Above Drawer Pack for CRS23 High Bodies)	\$3,029
S-MD-7PAK-23.5	Mechanics Drawer Pack (7) Roll-Out Drawers Manufactured by Harbor. Four (4) 3", One (1) 4" and Two (2) 5" Drawers. The 3" and 4" Drawers are 19" Deep, and The 5" Drawers are 16" Deep. All 250 lb. Capacity with Removable Dividers. Built Specifically for the 1 st Compartment of 8-ft., 9-ft., & 11-ft. DRW 40", 41" or with CRS23 High Bodies Only . This Price Per Drawer of \$446 Compares to the Average Standard Price of \$506 Per Individual Drawer. Save \$418 MSRP by Purchasing 7 Drawer Pack. (Recommend Fix Shelf Option SSF34X23 Above Drawer Pack for CRS23 High Bodies)	\$3,652
FOR RAISED FRONT COMPARTMENTS ONLY:		
S-MD-9PAK-23.5	Mechanics Drawer Pack (9) Roll-Out Drawers Manufactured by Harbor. Four (4) 3" and Five (5) 5" Drawers. The 3" and Top Two (2) 5" Drawers are 19" Deep, and The Bottom Three (3) 5" Drawers are 16" Deep. All 250 lb. Capacity with Removable Dividers. Built Specifically for the 1 st Compartment of 8-ft., 9-ft., & 11-ft. DRW with CRS23 High Bodies Only . This Price Per Drawer of \$446 Compares to the Average Standard Price of \$512 Per Individual Drawer. Save \$586 MSRP by Purchasing 9 Drawer Pack. (Recommend Fix Shelf Option SSF34X23 Above Drawer Pack for CRS23 High Bodies)	\$4,655



14-ft. TradeMaster & 14-ft. Maximizer

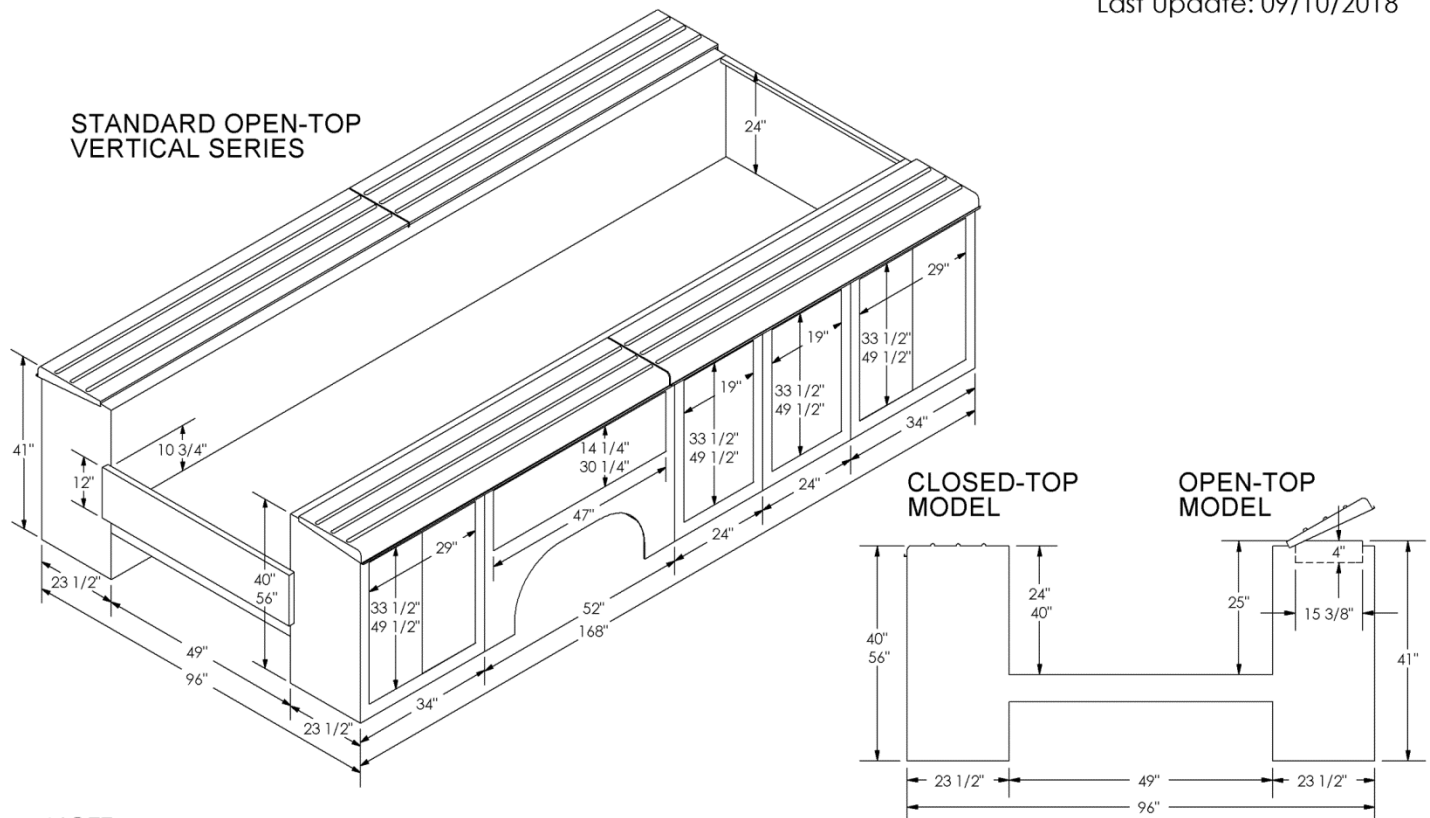
For F450 & F550 108" Cab-to-Axle (CA) Ford Chassis

14-Ft. Maximizer



FORD 14-FT TRADEMASTER AND MAXIMIZER DIMENSIONS

Last Update: 09/10/2018



14-ft. TradeMaster & 14-ft. Maximizer

For F450 & F550 108" Cab-to-Axle (CA) Ford Chassis

Application / Part Number	Body Profile	Body Length	Compt. Depth	Compt Height	Floor Width	M.S.R.P.
14-Ft. TradeMaster With 41" High Compartments (For F450 & F550 108" CA Chassis)						
BODIES						
HT168-2341A (w/ Stainless Steel Pop-Top Lids)	Standard Height	168"	23-1/2"	41"	49"	\$15,502
HT168-2341AF (w/ Tredbrite Pop-Top Lids)	Standard Height	168"	23-1/2"	41"	49"	\$15,602
HT168-2340A (w/ Closed Tops) (low profile bodies available at no extra charge)	Standard Height	168"	23-1/2"	40"	49"	\$15,502
14-Ft. Maximizer With 56" High Compartments (For Maximum Storage)(For F450 & F550 108" CA DRW Chassis)						
BODIES						
HT168-2356A (w/ Ribbed Closed Tops)	Standard Height	168"	23-1/2"	56"	49"	\$16,874
STANDARD EQUIPMENT						
Y14AWHITE	Paint Harbor White					INC
Z14-F/BRUL96-08	Mount w/ Incandescent Lights & Recess Bumper w/ 8" Step Bumper					INC
LOK-PB10	Harbor Push Button Locks w/ Red Band "Open" Indicator					INC
PS03 or P03	PS03 Stainless Steel Gravel Guards (w/ Stainless Steel Lids) or P03 Tredbrite Alum. Gravel Guards (w/ Tredbrite Lids)					INC
4X4	4x4 Reinforcement with 3/16" Front Crossmember					INC
PAINT OPTIONS						
Y14RED-FORD ¹	Single Stage Non Clear Coat F1 Red Only					\$3,425
Y14BLACK ¹	Single Stage Non Clear Coat Harbor Black					\$5,019
Y14METALLIC ¹	Multiple Stage Clear Coat Metallic					-
Z14-F/BRUL96-08-LED	Mount, Standard With LED Stop, Tail, Turn, Clearance, License Plate and 3-Bar Lights					\$315
¹ Perfect Color Match with Cab NOT Guaranteed						

NOTES: The Maximizer has all the industry-first qualities that separate the TradeMaster from the competition, plus the added benefit of 56" high compartments, that provide an eye-popping 40% more compartment storage!

14-ft. TradeMaster & 14-ft. Maximizer

For F450 & F550 108" Cab-to-Axle (CA) Ford Chassis

RACKS & RACK ACCESSORIES		
(All Racks Have Swing-Away Rear Bar, 4 Rope Hooks & Removable Center Bar Over Bed Area)		
RKTFL168-1541-R ¹	"Side Loader Rack" —Tapered-Leg Rack w/ 4" Drop-Down Longitudinal Bars, for Regular Cab Only	\$2,315
RKTFL168-1541-E ¹	"Side Loader Rack" —Tapered-Leg Rack w/ 4" Drop-Down Longitudinal Bars, for Super and Super Crew Cab	\$2,315
RKTOFB	Extend Any Standard Rack Shown Above to Front Bumper	\$1,299
RK35	Conduit Box With Rear Door (123"L x 6"H x 9.5"W)	\$864
RK36FE	Conduit Box Fully Enclosed With Rear Hinged Door & Hinged Lid. (123"Lx6"Hx9.5"W)	\$1,562
RK50	Two (2) Conduit Pockets	\$702
RK60	Expanded Metal Roof Shield	\$725
RK61	14 GA. Galvanized Steel Roof Shield Punched on Turret Press	\$401
RK65	Front Stop for Rack 12 Ga. Solid	\$305
RK90	Stainless Covers for Cross Bars on Racks (Price per Cross Bar)	\$227
MSTRAPS	Two (2) Rack Straps – Ratchets up to 500 lbs. Tension (Recommended with Conduit Pockets to Firmly Secure Materials or Ladders)	\$424
SAFETY & SECURITY OPTIONS		
LOK-AOK-FORD (x10)	Harbor ALL-ONE-KEY (A-O-K) Door Locks Keyed at Our Factory to Match the Vehicle Ignition Key. Separate Key Required for D39-HANDLE Master Lock Option.	\$352
D39-HANDLE	Master Lock with Rear Handle (Internal Stainless Steel Security Bars Lock All Doors). Has Separate Lock and Key from Push-Button or A-O-K Lock. If Ordered With Harbor Standard Style Lock, All Keys Match.	\$1,642
CBE168-3 ²	3-Piece Cargo Bed Enclosure with Flip-Up End Gate	\$2,647
CBE168-3-56 ²	3-Piece Cargo Bed Enclosure with Rear Barn Doors (for HT132-56" High)	\$4,028
CBR168-3 ²	3-Piece Raised Cargo Bed Enclosure with Rear Barn Doors	\$3,854
MLSBRB-LED	Rotating LED Strobe on Mounting Pad i.e. Mounts on Rack or Headboard Only, Not Roof. Lighted Cab Switch Included. ECCO 7965 LED Light, or Equivalent.	\$812
MLSBRB-LED-POLE	Rotating LED Strobe with Mounting Pad on Separate Pedestal Pole. Lighted Cab Switch Included. ECCO 7965 Light, or Equivalent.	\$905
MLTBAR-C	Light Bar Mounted on Separate Rack Behind Cab. Wired Through Back Bottom of Cab, Not Through Headliner. Whelen TAC F85LH, or Equivalent.	\$2,687
MCBC03	Chock Block Holder in Wheel Well. Recommended on Curb Side as Safest Location.	\$981
MALARM	Back-up Alarm (Preco 380P or Equivalent)	\$479
¹ Indicate Chassis as Regular Cab, Double Cab, or Crew Cab.		
² Remember to Add One Additional LOK-AOK (To Make Total Quantity 7) if Adding AOK Locks to Body		

14-ft. TradeMaster & 14-ft. Maximizer

For F450 & F550 108" Cab-to-Axle (CA) Ford Chassis

RECEIVERS, HITCHES & LIFT GATES		
MREC-IV ¹	Class IV Receiver – 2" Tube; A-Braced to Frame (10,000 lb. Gross Trailer Wt., 1,000 lb. Tongue Wt)	\$608
MREC-V ¹	Class V Receiver – 2 ½" Tube; A-Braced to Frame (15,000 lb. Gross Trailer Wt., 1,500 lb. Tongue Wt) Includes 2" Insert.	\$778
MREC-VI ¹	Class VI Receiver – 2 ½" Tube; A-Braced to Frame (20,000 lb. Gross Trailer Wt., 2,000 lb. Tongue Wt) Includes 2" Insert.	\$826
MHITCH01	Kerins K200 Multi Hitch with K750 Adaptor	\$316
M7PRONG	Standard 7-Prong Trailer Connector	\$237
M7/4PRONG	Standard 7/4-Prong Trailer Connector	\$378
G2-54-1342TP38	Tommy Gate Liftgate, 1600 lb. Lift Capacity, 49x38 Platform w/4" Taper–(w/Bumperettes add \$654)	\$6,023
G2-54-1342TP42	Tommy Gate Liftgate, 1600 lb. Lift Capacity, 49x42 Platform w/7" Taper—(w/Bumperettes add \$654)	\$5,948
G2-54-1642TP38	Tommy Gate Liftgate, 1600 lb. Lift Capacity, 49x38 Platform w/4" Taper–(w/ Bumperettes add \$654)	\$5,968
G2-54-1642TP42	Tommy Gate Liftgate, 1600 lb. Lift Capacity, 49x42 Platform w/7" Taper–(w/ Bumperettes add \$654)	\$5,978
BUMPERETTE-()	Bumperettes (Only Applies when Ordering Liftgate)	\$802
ADDITIONAL TRADEMASTER OPTIONS		
C06	Delete Front Compartment. Extend Floor to Exterior Edge of Body. Add Under-Deck Compartment Below Floor Reinforced to Add Equipment up to 750 lb.	\$1,695
C25	Louver the Inner and Outer Skins of a Single Door For Ventilation	\$137
C26	Reinforce Top of First Compartments With 10 GA. Plate for Mounting Additional Equipment (e.g. Compressors).	\$499
C34	Transverse Compartment Built Off #1 Compartment.-Single Side Access (Choose Street Side or Curb Side)	\$678
C40	Transverse Compartment Built Off #1 Compartment.-Dual Side Access	\$1,126
C41	One (1) 250 lb. Roll-Out Tray on (12) Heavy-Duty Bearings for Transverse Compartment (For Single or Dual Side Access)	\$1,942
F98	Reinforce Floor Behind Bulkhead to Carry 750 lb. of Additional Equipment, Machinery or Fluid Tanks	\$763
MACTIRE	Spare Tire Carrier Mount Behind Bulkhead Only. Not attached to Compartment Walls Due to Potential Water Leaks in Compartment	\$331
MBL14 ²	Bed Liner for 9-ft Body. Lines the Bed Area, Back Wrappers, Bulkhead and Tailgate.	\$1,518
METRK11	E Track, One Row Mount Along Each Side of Bed Area. Must Specify Location Height in Bed Area.	\$1,121
MGFI	Additional GFI Outlet Must be Wired to Inverter (Requires MINVTR)	\$365
MINVTR	Inverter w/ 115 Volt Outlet on Inverter Wagan Inverter 3000 Watts Continuous True Weighted Power (6,000 Watts Peak Surge Power. 115 Volts) Standard Mount Horizontal on Driver's Side Compt.	\$2,188
MMUD2430	Mud Flaps w/ Harbor Logo for Trade Master Bodies. 24x30 but Cut Down to Fit Wheel Area.	\$172
MPIPE	Heavy Duty Pipe Holder for Front or Rear End Panel. Only (1) Required When Used in Conjunction w/ Rear Mount Vise Bracket)	\$288
MVISE	Heavy Duty Stainless Steel Vise Bracket on Rear End Panel, 12"x7" for DRW only (not for SRW Bodies or With Lift Gate or Barn Doors).	\$446
MVISE-10	Heavy Duty Stainless Steel Vise Bracket on Rear End Panel, 10"x7" for SRW or DRW Bodies.	\$401
MWCB5GAL	5 Gallon Water Cask Platform and Bracket Mounted on Rear End Panel.	\$467
TG19	19' Tailgate In Lieu of Standard Height 12" Tailgate. For Use on Standard Floor Widths Only.	\$224
TGA10GA	Tailgate, Standard Size Reinforced with Smooth 10 GA. Inner Panel. Applies to Standard Size Tailgates.	\$234

¹ Reference Vehicle GCWR for Specific Vehicle Weight Limitation

² Must be Ordered at Time of Manufacture. If Ordered After Delivery, There is a Retro Charge

14-ft. TradeMaster & 14-ft. Maximizer

For F450 & F550 108" Cab-to-Axle (CA) Ford Chassis

COMPARTMENT OPTIONS		MSRP
CRB15	Single Raised Front Compartment w/ Bottle Brackets & Rings (Specify Side of Body). Compartment Height is 63" Maximum Bottle Size For 63" Compartment: Oxygen 55" HT x 9-1/2" Diameter. Acetylene 36-3/4" HT x 8-1/4" Diameter Includes Louvered Panel for Ventilation <i>For SRW Bodies Only</i>	\$2,237
CRB23	Single Raised Front Compartment w/ Bottle Brackets & Rings (Specify Side of Body). Compartment Height is 63" Maximum Bottle Size For 63" Compartment: Oxygen 55" HT x 9-1/2" Diameter. Acetylene 36-3/4" HT x 8-1/4" Diameter Includes Louvered Panel for Ventilation <i>For DRW Bodies Only</i>	\$2,683
CRS15	Single Raised Front Compartment w/ (2) Adjustable Shelves. (Specify Side of Body) – SRW <i>Bodies Only</i>	\$1,769
CRS23	Single Raised Front Compartment w/ (2) Adjustable Shelves. (Specify Side of Body) – DRW <i>Bodies Only</i>	\$1,869
SSF34X23	FIXED SHELF for Front Compartment 34" wide.	\$316 EA
BACKUP CAMERAS 10,001 LB GVWR AND OVER (OPTIONAL) <u>ALL 108" CA ARE OVER 10,000 LB GVWR, BACKUP CAMERAS ARE OPTIONAL</u>		
MBCK-UP-CAM-LB1	For Chassis Cab WITH Backup Camera Ready, and Factory Supplied Camera and Harness.	\$178
MBCK-UP-FD-872D ¹	For Chassis Cab ONLY WITH Backup Camera Ready (No Camera and Harness Supplied).	\$316
MBCK-UP-CAM-FORD1 ¹	For Chassis Cab WITHOUT Backup Camera Ready, and Factory Supplied Camera and Harness, BUT Has Factory Monitor in Dash or in Rearview Mirror.	\$608
MBCK-UP ²	For Chassis Cab WITHOUT Backup Camera Ready, Factory Supplied Camera and Harness, nor Factory Monitor in Dash or in Rearview Mirror.	\$685
¹ Aftermarket Camera Selected by Harbor Based On Capability of Meeting FMVSS Will Be Used. ² Aftermarket Camera and Monitor Selected by Harbor Based On Capability of Meeting FMVSS. Monitor Will Be Mounted Near Top Center of Dash.		

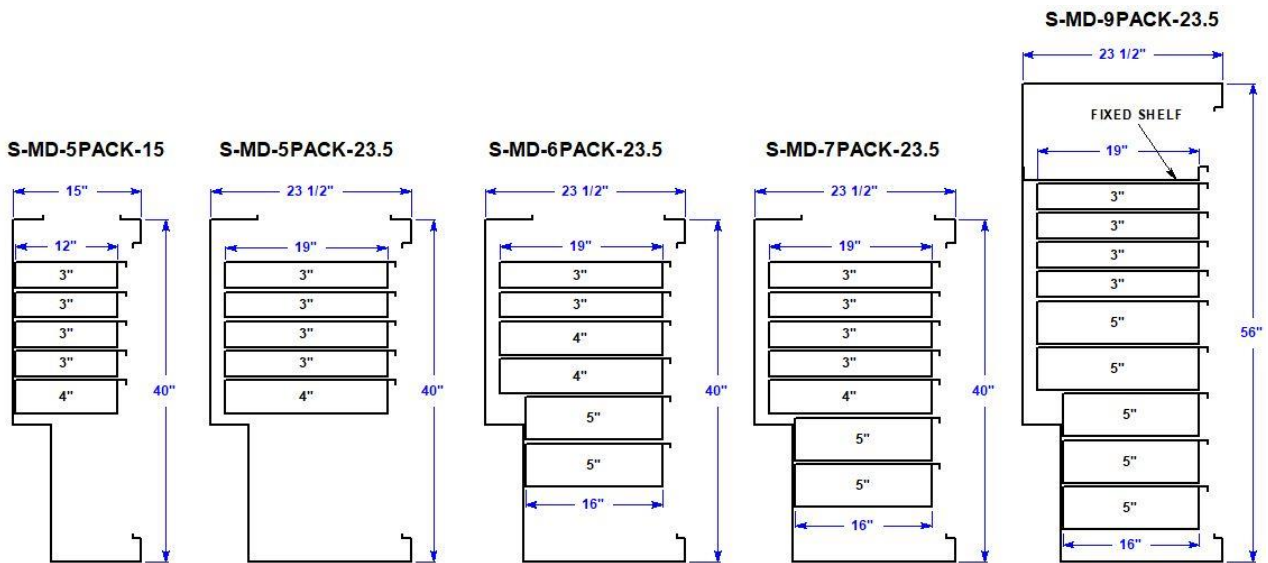
14-ft. TradeMaster & 14-ft. Maximizer

For F450 & F550 108" Cab-to-Axle (CA) Ford Chassis

MECHANICS DRAWER PACKAGES

FOR REGULAR & RAISED FRONT COMPARTMENTS:

S-MD-5PAK-23.5	Mechanics Drawer Pack (5) Roll-Out Drawers Manufactured by Harbor. Four (4) 3" and One (1) 4" Drawers 19" Deep. 250 lb. Capacity. Removable Dividers. Built Specifically for the 1 st Compartment of 8-ft., 9-ft., & 11-ft. DRW 40", 41" or with CRS23 High Bodies Only . This Price Per Drawer of \$446 Compares to the Average Standard Price of \$500 Per Individual Drawer. Save \$270 MSRP by Purchasing 5 Drawer Pack. (Recommend Fix Shelf Option SSF34X23 Above Drawer Pack for CRS23 High Bodies)	\$2,568
S-MD-6PAK-23.5	Mechanics Drawer Pack (6) Roll-Out Drawers Manufactured by Harbor. Two (2) 3", Two (2) 4" and Two (2) 5" Drawers. The 3" and 4" Drawers are 19" Deep, and The 5" Drawers are 16" Deep. All 250 lb. Capacity with Removable Dividers. Built Specifically for the 1 st Compartment of 8-ft., 9-ft., & 11-ft. DRW 40", 41" or with CRS23 High Bodies Only . This Price Per Drawer of \$446 Compares to the Average Standard Price of \$507 Per Individual Drawer. Save \$364 MSRP by Purchasing 6 Drawer Pack. (Recommend Fix Shelf Option SSF34X23 Above Drawer Pack for CRS23 High Bodies)	\$2,868
S-MD-7PAK-23.5	Mechanics Drawer Pack (7) Roll-Out Drawers Manufactured by Harbor. Four (4) 3", One (1) 4" and Two (2) 5" Drawers. The 3" and 4" Drawers are 19" Deep, and The 5" Drawers are 16" Deep. All 250 lb. Capacity with Removable Dividers. Built Specifically for the 1 st Compartment of 8-ft., 9-ft., & 11-ft. DRW 40", 41" or with CRS23 High Bodies Only . This Price Per Drawer of \$446 Compares to the Average Standard Price of \$506 Per Individual Drawer. Save \$418 MSRP by Purchasing 7 Drawer Pack. (Recommend Fix Shelf Option SSF34X23 Above Drawer Pack for CRS23 High Bodies)	\$3,468
FOR RAISED FRONT COMPARTMENTS ONLY:		
S-MD-9PAK-23.5	Mechanics Drawer Pack (9) Roll-Out Drawers Manufactured by Harbor. Four (4) 3" and Five (5) 5" Drawers. The 3" and Top Two (2) 5" Drawers are 19" Deep, and The Bottom Three (3) 5" Drawers are 16" Deep. All 250 lb. Capacity with Removable Dividers. Built Specifically for the 1 st Compartment of 8-ft., 9-ft., & 11-ft. DRW with CRS23 High Bodies Only . This Price Per Drawer of \$446 Compares to the Average Standard Price of \$512 Per Individual Drawer. Save \$586 MSRP by Purchasing 9 Drawer Pack. (Recommend Fix Shelf Option SSF34X23 Above Drawer Pack for CRS23 High Bodies)	\$4,678



Harbor Truck & Van

WARRANTY

NEW BODY LIMITED WARRANTY

WHAT IS COVERED?

All Harbor Service Bodies, Harbor Platform Bodies, and Harbor Van Interiors (collectively “product”) during the Warranty Period (described immediately below).

Harbor Truck & Van (Harbor) warrants each product manufactured by Harbor to be free of defects in materials or workmanship for a period of three (3) years or 36,000 miles whichever comes first from the date the body is placed “in service”. Harbor warrants its factory applied primer and finish coatings and/or powder coat finish against material defects for a period of three (3) years or 36,000 miles whichever comes first from the date the body is placed “in service”. During this three (3) year 36,000 miles warranty period, Harbor guarantees its products to be free of rust-through perforation. The warranty applies when the product is properly installed by Harbor or one of its Service Centers or Distributors and is properly maintained.

The “in service” date shall begin on the earliest of the following dates: the date of purchase by the first owner/user or; one year from the date the product was manufactured by Harbor or; the date it was first used as a demonstrator vehicle. This warranty is subject to limitations and exclusions as listed in the sections below.

WARRANTY CLAIMS PROCEDURE

The owner shall immediately contact Harbor Customer Service (800-433-9452 Ext. 270 or customerservice@harbortruck.com) and provide a detailed description in writing with pictures showing and/or demonstrating the purported defect. The information must include the body serial number found on a plaque on the upper interior of the first driver (street) side compartment on the body or on the front rail of the platform body on the driver (street) side.

Harbor shall repair or replace, at its option, any factory manufactured and installed part that is deemed defective under normal use and when the product has been properly maintained in accordance with this warranty and Harbor’s OWNER’S MANUAL. The warranty repairs shall be performed free of charge for parts or labor. To assure warranty repairs meet the highest standards, Harbor reserves the right to perform all warranty repairs in-house or at one of Harbor’s authorized Distributors or Service Centers. Any warranty claim, for which repair is performed by truck dealers, customers or other third parties without Harbor’s express written permission in advance, shall be subject to rejection and the warranty voided. It is Harbor’s sole determination whether the product is defective in material or workmanship as claimed.

WARRANTY EXCLUSIONS

1. Parts, that upon inspection, are found by Harbor not to contain factory defects in material and workmanship
2. Warranty claim on any product where the vehicle is not the original vehicle on which the product is installed. Warranty claim on a vehicle damaged to such an extent that the owner or the institution financing, leasing or insuring the vehicle consider it uneconomical to repair it. This includes, but is not limited to a product titled as scrap, salvage or dismantled. Warranty claim to a product where the vehicle has been altered so the true mileage cannot be determined and where the mileage is a condition of the warranty.
3. Warranty claim for any part or accessory manufactured by Harbor Body that has been subjected to abuse, misuse, exposure to caustic acids or corrosive materials, fire, negligence, accident damage, collision or theft. Warranty claim for repair the need for which was caused by tampering, disconnection, improper adjustment, repair, or improper maintenance in accordance with the owner’s manual.
4. Warranty claim for fatigue or cracking of body structure due to abnormal stress caused by improper mounting, overloading, severe off-road applications, or twisting loads by a crane where the load exceeds crane/body capacity.
5. Any part or accessory that has been repaired by an unauthorized party without Harbor’s written permission where such repair is deemed by Harbor to have adversely affected the performance, reliability or stability of the part. Failures as a result of improper installation or adaptation of the body, van interior or special equipment by an unauthorized party.

Harbor Truck & Van

WARRANTY

6. *Parts or repairs for outside-manufactured accessories (e.g. cranes, lift gates, generators, compressors, pumps, welding machines, hydraulic pumps or reservoirs etc.) that are not manufactured by Harbor where these products are covered by their own manufacturers' warranties in effect at the time of delivery. A copy of an outside-manufactured accessory warranty, if provided to Harbor, has been included in your owners' packet. These are also generally available on line. Parts or repairs that are considered part of normal wear and tear to these outside-manufactured accessories by their manufacturers. Labor for removal or replacement of defective parts or accessories not installed by Harbor.*
7. *Repairs for corrosion perforation (defined as penetration of rust creating a hole through the metal) due to poor care, exposure to caustic acids or corrosive materials, exposure to improper cleaning materials, external forces (such as stones, salt or equivalent, gravel, accidents, collisions or other forms of impact), or due to environmental conditions including "acts of nature", industrial fall-out, acid rain or location on an island surrounded by saltwater in a non-contiguous 48 state location like the Hawaiian Islands. Poor care is defined as external rust left unrepaired and later causing corrosion perforation due to neglect of vehicle care. Repair for corrosion perforation due to installation (or de-installation) of accessories by user, unauthorized party or Harbor Distributor/Service Center. In the latter case, the Distributor or Service Center would be responsible for the repair if the product is still in the eligible Warranty Period. Repairs for corrosion other than perforation are not covered.*
8. *Repairs of paint flaws caused by conditions such as industrial fallout, acid rain, "acts of nature", exposure to caustic acids or corrosive materials, exposure to improper cleaning materials, scratches, abrasions, dents, nicks, chips, failures on flexible components, failure of under coating, calking, and cracking of joints subject to tensional bending or movement. Normal paint aging conditions.*
9. *Damage or failure of wood floor on a platform body or other upfit including, but not limited to damage from moisture, weather or use of corrosive or caustic materials resulting in buckling, deterioration or damage to such wood which, in Harbor's opinion, is considered normal wear and tear. Harbor replacement costs for wood floors that are determined to be defective shall be limited to the following percentages: 100% first year; 25% second year; 10% third year.*
10. *Harbor shall not be liable for incidental damages including, but not limited to: rental reimbursement, loss of use, storage, inconvenience, lost time or lost pay, food and lodging, and telephone calls.*
11. *Conditions related to noise, vibration or harshness of ride that are considered normal.*
12. *Products purchased outside the continental U.S. and Canada.*

DISCLAIMERS

This warranty is the only express warranty made by Harbor, and Harbor's obligations are limited to those expressed in this warranty. Harbor makes no other warranties, express or implied, and disclaims all other warranties, including any implied warranty of merchantability or fitness for particular purpose.

Harbor shall not be liable to the purchaser, or any third party, for any direct or indirect, incidental or consequential damage or loss even if the potential for such damage or loss was disclosed in advance. Some states do not allow the exclusion or limitation of incidental or consequential damages, or how long an implied warranty lasts in which case these limitations may not apply. These rights may vary from state to state.

If the product is improperly installed, modified, misused, damaged or otherwise tampered with, the Harbor Warranty shall become null and void and shall lapse.

In no event shall any liability arising from the product exceed the amount of the proceeds received by Harbor pursuant to its sale.

Harbor reserves the right to make changes to its products at any time without incurring any obligation to make the same or similar changes on products previously built by Harbor.

No person is authorized to modify or add to the Harbor Warranty.

This Warranty shall be enforced and construed in accordance with the laws of the State of California.