

# ComboMaster

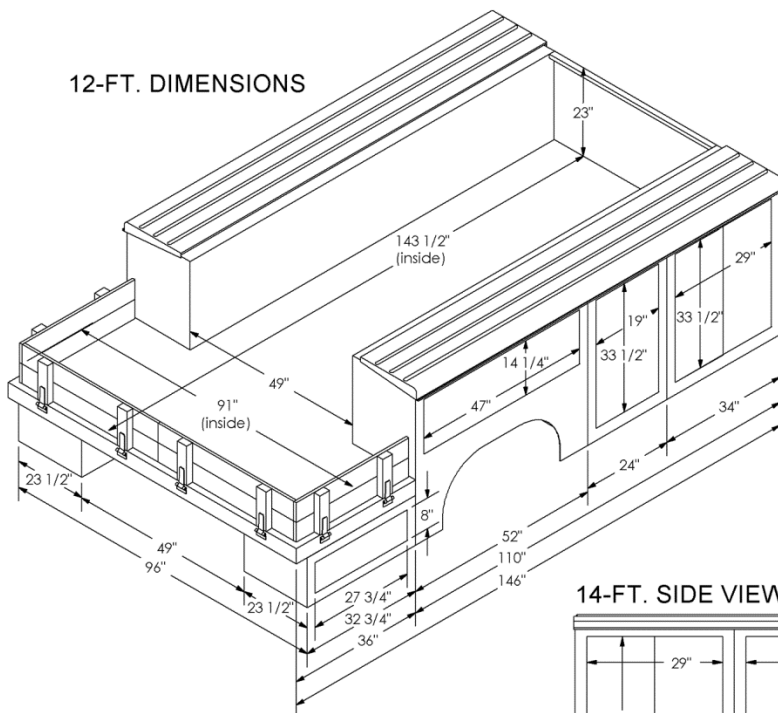
**For F350, F450 & F550 – 60" to 108" Cab-to-Axle (CA) Chassis**  
**14-ft. ComboMaster Body w/ Standard Fold-Down Wood Gate & Standard Over-Cab Rack**



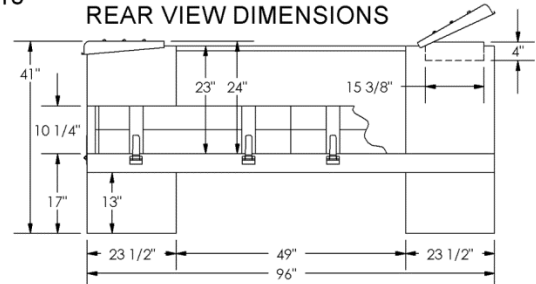
## FORD USC COMBOMASTER DIMENSIONS

Last Update: 09/10/2018

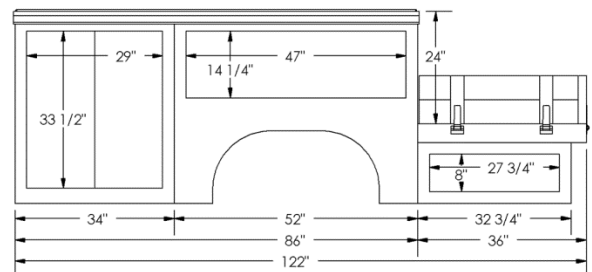
12-FT. DIMENSIONS



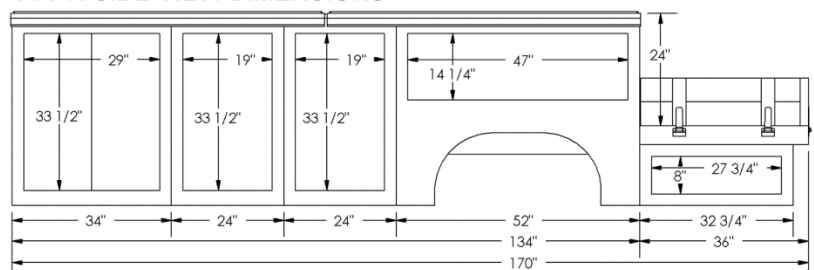
REAR VIEW DIMENSIONS



10-FT. SIDE VIEW DIMENSIONS



14-FT. SIDE VIEW DIMENSIONS



**NOTE:**

- 1) DOOR COMPARTMENT DIMENSIONS ARE THE CLEAR DOOR OPENING.
- 2) ALL DIMENSIONS SHOWN ARE STANDARD.
- 3) STANDARD LADDER RACK NOT SHOWN HERE.

# **ComboMaster**

**For F350, F450 & F550 – 60” to 108” Cab-to-Axle (CA) Chassis**

**.....MORE INDUSTRY FIRSTS FROM THE MANUFACTURER OF THE BEST BUILT BODIES IN AMERICA**

- **HARBOR NEXTGEN TRADEMASTER OFFERS NEW ENHANCED FEATURES:**
  - **NEXTGEN WEATHER SHIELD PROTECTION FEATURES INCLUDING DUAL SEALS ON ALL DOORS PROTECT THE TOOLS OF YOUR LIVELYHOOD**
  - **LARGER SIZE COMPARTMENTS FOR ALL DRW TRUCKS**
  - **RE-ENGINEERED CROSSMEMBERS ELIMINATE NEED FOR OPTIONAL 4X4 REINFORCEMENT**

## **HARBOR’S INDUSTRY BEST FEATURES**

- **36” REAR WORK PLATFORM**
- **TWO (2) 33”L x 13”H x 19”D STORAGE COMPARTMENTS UNDER PLATFORM**
- **FOLD DOWN REAR GATES 10” HIGH WITH AUTO BRITE POSTS AND PROTECTIVE CAPS  
(BEST IN INDUSTRY!)**
- **TAPERED-LEG OVER-CAB RACK WITH STANDARD SWING AWAY REAR BAR, REMOVABLE MIDDLE BAR AND FOUR (4) ROPE HOOKS (BEST IN INDUSTRY!)**
- **8” RECESSED STEP BUMPER FOR SURE FOOTING (BEST IN INDUSTRY!)**
- **SELF-OPENING POP-TOP STAINLESS STEEL LIDS (BEST IN INDUSTRY!)**
- **PRE-TENSIONED METAL DIVIDERS IN POP-TOP COMPARTMENT FIT SNUGLY AND CAN BE RELOCATED TO CREATE YOUR OWN STORAGE SYSTEM**
- **HARBOR PUSH BUTTON LOCKS WITH VISIBLE “RED BAND OPEN” INDICATOR NOW A STANDARD FEATURE**
- **HARBOR ALL-ONE-KEY (“AOK”) DOOR LOCKS CONFIGURABLE TO THE IGNITION KEY**
- **STAINLESS STEEL GRAVEL GUARDS FOR CORROSION PROTECTION (BEST IN INDUSTRY!)**
- **GAS SHOCK DOOR STAYS ON ALL VERTICAL DOORS (BEST IN INDUSTRY!)**
- **FULL 49” FLOOR TO CARRY ALL STANDARD-SIZE MATERIALS**
- **BEST OF ALL...HARBOR QUALITY!!!**

## **Plus these Industry-First Features by Harbor**

- **Exclusive NeXtGen Weather Shield protection to weather your toughest driving conditions** – Our unique design consisting of 2 neoprene door seals, 1-piece compartment backwrapper with integral roll for pop-top lids, waterproof gaskets and self-sealing rivets stops water from leaking in around doors, lids, locks and door hinges.
- **Lock-tight shelving keeps your tools organized even in harsh off-road settings** – Adjustable shelves lock into place preventing tools from dumping. There are no old-fashioned shelf tabs that shear off due to shelf vibration.
- **Best rust and corrosion busters!** – All electro-galvanized sheet metal construction; finest cleaning and phosphate pre-treatment system prior to painting; PPG’s finest automotive finish coat; bumpers and racks powder coated for extra durability; piano hinge and pin on cargo bed enclosure door, conduit box door and rear access doors all stainless and rust-proof; all expanded metal parts hot-dip galvanized.
- **Toughest locking devices to protect the tools of your livelihood** – Silky smooth 3-point locking system; automotive quality Harbor locks with water resistant dust covers, double-bit keys, all locking devices attached with all stainless steel rivets to resist unwanted break-ins without special tools; add Harbor’s NeXtGen MasterLock option for additional protection and peace of mind.

# ComboMaster

**For F350, F450 & F550 – 60” to 108” Cab-to-Axle (CA) Chassis**

## 10-FT. COMBOMASTER FOR F350, F450 & F550 60” CA DRW CHASSIS

BODIES		LENGTH	DEPTH	HEIGHT	WIDTH	MSRP
HTUS086-36-23WA (w/ Stainless Steel Lids)	Ford 86"+36"	122"	23-1/2"	41"	49"	\$15,524
HTUS086-36-23WAF (w/ Tredbrite Lids)	Ford 86"+36"	122"	23-1/2"	41"	49"	\$15,824
STANDARD EQUIPMENT						
MFOLDDOWN	Fold-Down Hardwood Gates					INC
Y09AWHITE	Paint Harbor White					INC
Z10-F/96-08-USC	Mount w/ Incandescent Lights & Recess Bumper w/ 8" Step					INC
RKUTFL086-79-(R/E)	"Side Loader" Rack, Heavy-Duty Tapered-Leg Over Cab.					INC
PS03 or P03	Stainless Steel Gravel Guards (w/ Stainless Steel Lids) or P03 Tredbrite Alum. Gravel Guards (w/Tredbrite Aluminum Lids)					INC
4X4	4x4 Reinforcement with 3/16" Front Crossmember					INC
PAINT AND MOUNT OPTIONS						
Y09RED-FORD <sup>1</sup>	Single Stage Non-Clear Coat F1 Red Only					\$2,204
Y09BLACK <sup>1</sup>	Single Stage Non-Clear Coat Harbor Black					\$3,445
Y09METALLIC <sup>1</sup>	Multiple Stage Clear Coat Metallic					Call for Quote
Z10-F/96-08-USC-LED	Mount, Standard With LED Stop, Tail, Turn, Clearance & License Plate Lights					\$316
OPTIONAL ACCESSORIES						
LOK-AOK-FORD- 10FTUSC	Harbor ALL-ONE-KEY Door Locks (Keyed at Our Factory to Match the Vehicle Ignition Key) for 10-Ft ComboMaster					\$219
D30C	Push-Button Master Lock (Internal Stainless Steel Security Bars Lock All Doors)for Combo Body. Keys Match With Push-Button Locks. With A-O-K Locks, There is No Matching Push- Button A-O-K Lock. Requires Use of Option D30-HANDLE With Separate Lock and Key.					\$1,645
D30C-HANDLE	Master Lock with Rear Handle (Internal Stainless Steel Security Bars Lock All Doors). Uses Standard Non-Push Button Lock and Key not an A-O-K Lock. Otherwise, All Keys Match					\$1,688
MFOLDDOWN-STEEL	Use Steel Slats in Lieu of Wood Slats					\$388
MFOLDDOWN-ALUM	Use Aluminum Slats in Lieu of Wood Slats					\$750
<sup>1</sup> Perfect Color Match with Cab NOT Guaranteed						

<sup>1</sup> Perfect Color Match with Cab NOT Guaranteed

**For F350, F450 & F550 – 60" to 108" Cab-to-Axle (CA) Chassis**  
**12-FT. COMBOMASTER FOR F350, F450 & F550 84" CA DRW CHASSIS**

<sup>1</sup> Perfect Color Match with Cab NOT Guaranteed

**For F350, F450 & F550 – 60" to 108" Cab-to-Axle (CA) Chassis**  
**14-FT. COMBOMASTER FOR F450 & F550 108" CA DRW CHASSIS**

<sup>1</sup> Perfect Color Match with Cab NOT Guaranteed



# ComboMaster

**For F350, F450 & F550 – 60" to 108" Cab-to-Axle (CA) Chassis**

RACKS & RACK ACCESSORIES		
<b>RKTOFB</b>	Extend Standard Rack to Front Bumper	<b>\$1,394</b>
<b>RK35</b>	Conduit Box With Rear Door (123"L x 6"H x 9.5"W)	<b>\$928</b>
<b>RK36FE</b>	Conduit Box Fully Enclosed With Rear Hinged Door & Hinged Lid. (123"Lx6"Hx9.5"W)	<b>\$1,389</b>
<b>RK50</b>	Two (2) Conduit Pockets	<b>\$722</b>
<b>RK60</b>	Expanded Metal Roof Shield	<b>\$722</b>
<b>RK61</b>	14 GA. Galvanized Steel Roof Shield Punched on Turret Press	<b>\$657</b>
<b>RK65</b>	Front Stop for Rack	<b>\$301</b>
<b>RK90</b>	Stainless Covers for Cross Bars on Racks (Price per Cross Bar)	<b>\$214</b>
<b>RKUCR</b>	Credit for Deleting ComboMaster Rack	<b>-\$257</b>
<b>MSTRAPS</b>	Two (2) Rack Straps – Ratchets up to 500 lbs. Tension (Recommended with Conduit Pockets)	<b>\$403</b>
SAFETY & SECURITY OPTIONS		
<b>MLSBRB-LED</b>	Rotating LED Strobe on Mounting Pad i.e. Mounts on Rack or Headboard Only, Not Roof. Lighted Cab Switch Included. ECCO 7965 LED Light, or Equivalent.	<b>\$687</b>
<b>MLSBRB-LED-POLE</b>	Rotating LED Strobe with Mounting Pad on Separate Pedestal Pole. Lighted Cab Switch Included. ECCO 7965 Light, or Equivalent.	<b>\$787</b>
<b>MLTBAR-C</b>	Light Bar Mounted on Separate Rack Behind Cab. Wired Through Back Bottom of Cab, Not Through Headliner. Whelen TAC F85LH, or Equivalent.	<b>\$2,456</b>
<b>MCBC03</b>	Dual Chock Block Holders in Wheel Well. Recommended on Curbside as Safest Location.	<b>\$877</b>
<b>MALARM</b>	Back-up Alarm (Preco 380P or Equivalent)	<b>\$379</b>
BUMPERS, RECEIVERS & HITCHES		
<b>MREC-IV<sup>1</sup></b>	Class IV Receiver – 2" Tube; A-Braced to Frame(10,000 lb. Gross Trailer Wt., 1,000 lb. Tongue Wt)	<b>\$572</b>
<b>MREC-V<sup>1</sup></b>	Class V Receiver – 2 ½" Tube; A-Braced to Frame(15,000 lb. Gross Trailer Wt., 1,500 lb. Tongue Wt) Includes 2" Insert.	<b>\$781</b>
<b>MREC-VI<sup>1</sup></b>	Class VI Receiver – 2 ½" Tube; A-Braced to Frame (20,000 lb. Gross Trailer Wt., 2,000 lb. Tongue Wt) Includes 2" Insert.	<b>\$821</b>
<b>MHITCH01</b>	Kerins K200 Multi Hitch with K750 adaptor.	<b>\$305</b>
<b>M7PRONG</b>	Standard 7-Prong Trailer Connector	<b>\$224</b>
<b>M7/4PRONG</b>	Standard 7/4-Prong Trailer Connector	<b>\$325</b>
<sup>1</sup> Reference Vehicle GCWR for Specific Vehicle Weight Limitation		
BACKUP CAMERAS		
10,001 LB GVWR AND OVER (OPTIONAL)		
<b>ALL STANDARD COMBOMASTERS ARE OVER 10,000 LB GVWR, BACKUP CAMERAS ARE OPTIONAL</b>		
<b>MBCK-UP-CAM-LB1</b>	For Chassis Cab <b>WITH</b> Backup Camera Ready, and Factory Supplied Camera and Harness.	<b>\$173</b>
<b>MBCK-UP-FD-872D<sup>1</sup></b>	For Chassis Cab <b>ONLY WITH</b> Backup Camera Ready (No Camera and Harness Supplied).	<b>\$326</b>
<b>MBCK-UP-CAM-FORD1<sup>1</sup></b>	For Chassis Cab <b>WITHOUT</b> Backup Camera Ready, and Factory Supplied Camera and Harness, <b>BUT</b> Has Factory Monitor in Dash or in Rearview Mirror.	<b>\$587</b>
<b>MBCK-UP<sup>2</sup></b>	For Chassis Cab <b>WITHOUT</b> Backup Camera Ready, Factory Supplied Camera and Harness, nor Factory Monitor in Dash or in Rearview Mirror.	<b>\$703</b>
<sup>1</sup> Aftermarket Camera Selected by Harbor Based On Capability of Meeting FMVSS Will Be Used.		
<sup>2</sup> Aftermarket Camera and Monitor Selected by Harbor Based On Capability of Meeting FMVSS. Monitor Will Be Mounted Near Top Center of Dash.		

# ComboMaster

**For F350, F450 & F550 – 60" to 108" Cab-to-Axle (CA) Chassis**

ADDITIONAL COMBOMASTER OPTIONS		
<b>MACTIRE</b>	Spare Tire Carrier Mount Behind Bulkhead Only. Not attached to Compartments Due to Potential Water Leaks in Compartment	<b>\$315</b>
<b>MPIPE</b>	Heavy Duty Pipe Holder (Front End Panel Only When Used in Conjunction w/Vise Bracket)	<b>\$225</b>
<b>MVISE</b>	Heavy Duty Stainless Steel Vise Bracket on Rear End Panel, 12"x7" (not for SRW bodies with lift gate or barn doors).	<b>\$384</b>
<b>MVISE-10</b>	Heavy Duty Stainless Steel Vise Bracket on Rear End Panel, 10"x7".	<b>\$384</b>
<b>C06</b>	Delete Front Compartment. Extend Floor to Exterior Edge of Body. Add UnderDeck Compartment Below Floor.	<b>\$1,428</b>
<b>C25</b>	Louver the Inner and Outer Skins of a Single Door for Ventilation	<b>\$117</b>
<b>C26</b>	Reinforce Top of First Compartments With 10 GA. Plate for Mounting Additional Equipment (e.g. Compressors).	<b>\$529</b>
<b>C34</b>	Transverse Compartment Built Off #1 Compartment.-Single Side Access (Choose Street Side or Curb Side)	<b>\$727</b>
<b>C40</b>	Transverse Compartment Built Off #1 Compartment.-Dual Side Access	<b>\$1,124</b>
<b>C41</b>	(1) 250 lb. Roll-Out Tray on (12) Heavy-Duty Bearings for Transverse Compartment (For Single or Dual Side Access)	<b>\$1,824</b>
<b>CRB23</b>	<b>Single Raised Front Compartment w/ Bottle Brackets &amp; Rings</b> (Specify Which Side of Body). Compartment Height is 63". Maximum Bottle Size For 63". Compartment: Oxygen 55" HT x 9-1/2" Diameter. Acetylene 36-3/4" HT x 8-1/4" Diameter Includes Louvered Panel for Ventilation	<b>\$2,697</b>
<b>CRS23</b>	<b>Single Raised Front Compartment w/ (2) Adjustable Shelves</b> (Specify Side)	<b>\$1,889</b>
<b>F98</b>	Reinforce Floor Behind Bulkhead to Carry 750 lb. of Additional Equipment, Machinery or Fluid Tanks	<b>\$715</b>
<b>MINVTR</b>	<b>Inverter w/ 115 Volt Outlet on Inverter</b> Wagan Inverter 3000 Watts Continuous True Weighted Power (6,000 Watts Peak Surge Power. 115 Volts) Standard Mount Horizontal on Driver's Side Compartment.	<b>\$2,021</b>
<b>MGFI</b>	<b>Additional GFI Outlet</b> Must be Wired to Inverter (Requires MINVTR)	<b>\$365</b>
<b>MWCB5GAL</b>	5 Gallon Water Cask Platform and Bracket Mounted on Rear End Panel.	<b>\$485</b>
COMPARTMENT OPTIONS		<b>MSRP</b>
<b>CRB15</b>	<b>Single Raised Front Compartment w/ Bottle Brackets &amp; Rings</b> (Specify Side of Body). Compartment Height is 63" Maximum Bottle Size For 63" Compartment: Oxygen 55" HT x 9-1/2" Diameter. Acetylene 36-3/4" HT x 8-1/4" Diameter Includes Louvered Panel for Ventilation <b>For SRW Bodies Only</b>	<b>\$2,214</b>
<b>CRB23</b>	<b>Single Raised Front Compartment w/ Bottle Brackets &amp; Rings</b> (Specify Side of Body). Compartment Height is 63" Maximum Bottle Size For 63" Compartment: Oxygen 55" HT x 9-1/2" Diameter. Acetylene 36-3/4" HT x 8-1/4" Diameter Includes Louvered Panel for Ventilation <b>For DRW Bodies Only</b>	<b>\$2,699</b>
<b>CRS15</b>	<b>Single Raised Front Compartment w/ (2) Adjustable Shelves.</b> (Specify Side of Body) – <b>SRW Bodies Only</b>	<b>\$1,645</b>
<b>CRS23</b>	<b>Single Raised Front Compartment w/ (2) Adjustable Shelves.</b> (Specify Side of Body) – <b>DRW Bodies Only</b>	<b>\$1,845</b>
<b>SSF34X(15/23)</b>	<b>FIXED SHELF</b> for Front Compartment 34" wide.	<b>\$315 EA</b>

# ComboMaster

**For F350, F450 & F550 – 60" to 108" Cab-to-Axle (CA) Chassis**

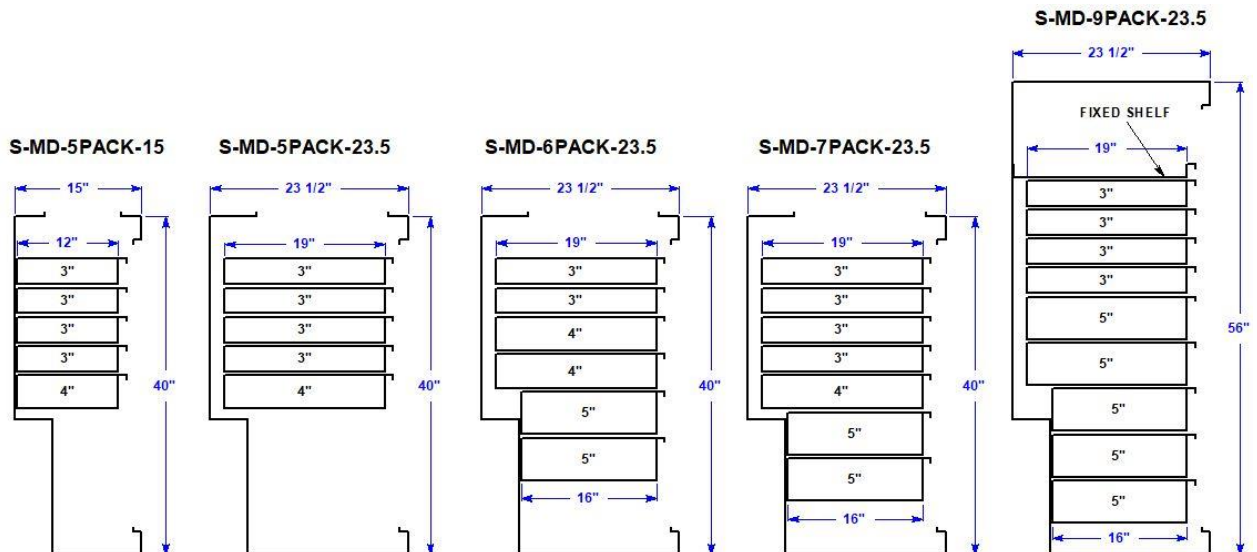
## MECHANICS DRAWER PACKAGES

### FOR REGULAR & RAISED FRONT COMPARTMENTS:

<b>S-MD-5PAK-15</b>	Mechanics Drawer Pack (5) Roll-Out Drawers Manufactured by Harbor. Four (4) 3" and One (1) 4" Drawers 12" Deep. 250 lb. Capacity. Removable Dividers. Built Specifically for the 1 <sup>st</sup> Compartment of <b>8-ft. &amp; 9-ft. SRW 40", 41", or with CRS15 High Bodies Only</b> . This Price Per Drawer of \$446 Compares to the Average Standard Price of \$500 Per Individual Drawer. Save \$270 MSRP by Purchasing 5 Drawer Pack. (Recommend Fix Shelf Option SSF34X15 Above Drawer Pack for CRS15 High Bodies)	<b>\$2,630</b>
<b>S-MD-5PAK-23.5</b>	Mechanics Drawer Pack (5) Roll-Out Drawers Manufactured by Harbor. Four (4) 3" and One (1) 4" Drawers 19" Deep. 250 lb. Capacity. Removable Dividers. Built Specifically for the 1 <sup>st</sup> Compartment of <b>8-ft., 9-ft., &amp; 11-ft. DRW 40", 41" or with CRS23 High Bodies Only</b> . This Price Per Drawer of \$446 Compares to the Average Standard Price of \$500 Per Individual Drawer. Save \$270 MSRP by Purchasing 5 Drawer Pack. (Recommend Fix Shelf Option SSF34X23 Above Drawer Pack for CRS23 High Bodies)	<b>\$2,730</b>
<b>S-MD-6PAK-23.5</b>	Mechanics Drawer Pack (6) Roll-Out Drawers Manufactured by Harbor. Two (2) 3", Two (2) 4" and Two (2) 5" Drawers. The 3" and 4" Drawers are 19" Deep, and The 5" Drawers are 16" Deep. All 250 lb. Capacity with Removable Dividers. Built Specifically for the 1 <sup>st</sup> Compartment of <b>8-ft., 9-ft., &amp; 11-ft. DRW 40", 41" or with CRS23 High Bodies Only</b> . This Price Per Drawer of \$446 Compares to the Average Standard Price of \$507 Per Individual Drawer. Save \$364 MSRP by Purchasing 6 Drawer Pack. (Recommend Fix Shelf Option SSF34X23 Above Drawer Pack for CRS23 High Bodies)	<b>\$2,867</b>
<b>S-MD-7PAK-23.5</b>	Mechanics Drawer Pack (7) Roll-Out Drawers Manufactured by Harbor. Four (4) 3", One (1) 4" and Two (2) 5" Drawers. The 3" and 4" Drawers are 19" Deep, and The 5" Drawers are 16" Deep. All 250 lb. Capacity with Removable Dividers. Built Specifically for the 1 <sup>st</sup> Compartment of <b>8-ft., 9-ft., &amp; 11-ft. DRW 40", 41" or with CRS23 High Bodies Only</b> . This Price Per Drawer of \$446 Compares to the Average Standard Price of \$506 Per Individual Drawer. Save \$418 MSRP by Purchasing 7 Drawer Pack. (Recommend Fix Shelf Option SSF34X23 Above Drawer Pack for CRS23 High Bodies)	<b>\$3,412</b>

### FOR RAISED FRONT COMPARTMENTS ONLY:

<b>S-MD-9PAK-23.5</b>	Mechanics Drawer Pack (9) Roll-Out Drawers Manufactured by Harbor. Four (4) 3" and Five (5) 5" Drawers. The 3" and Top Two (2) 5" Drawers are 19" Deep, and The Bottom Three (3) 5" Drawers are 16" Deep. All 250 lb. Capacity with Removable Dividers. Built Specifically for the 1 <sup>st</sup> Compartment of <b>8-ft., 9-ft., &amp; 11-ft. DRW with CRS23 High Bodies Only</b> . This Price Per Drawer of \$446 Compares to the Average Standard Price of \$512 Per Individual Drawer. Save \$586 MSRP by Purchasing 9 Drawer Pack. (Recommend Fix Shelf Option SSF34X23 Above Drawer Pack for CRS23 High Bodies)	<b>\$4,524</b>
-----------------------	--	----------------





# Standard Contractors

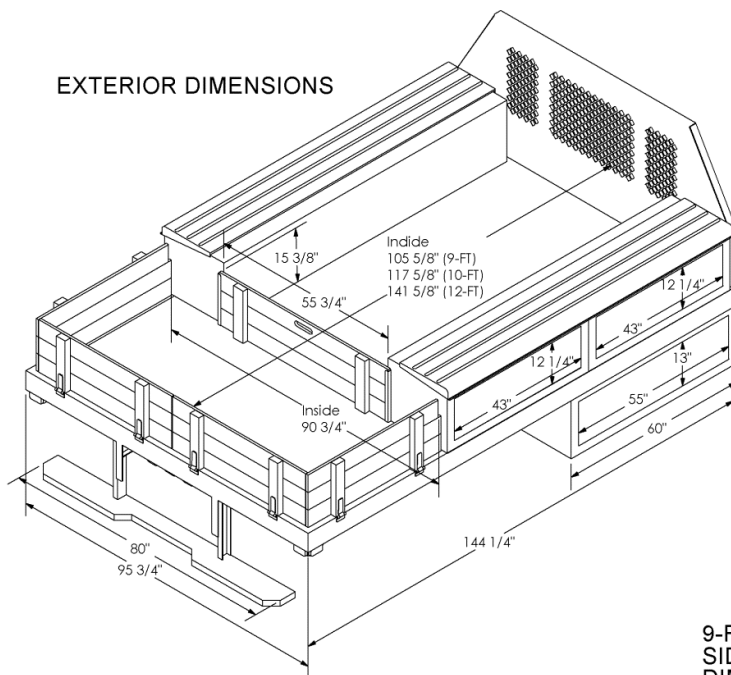
The "Standard Contractor" W/Under Deck Boxes & Receiver Options



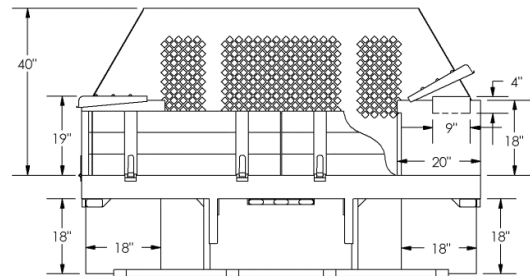
## FORD CONTRACTOR DIMENSIONS

Last Update: 2/26/2015

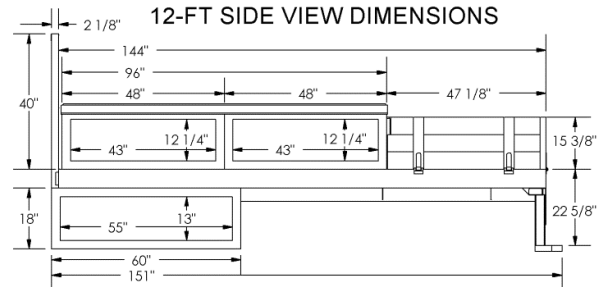
EXTERIOR DIMENSIONS



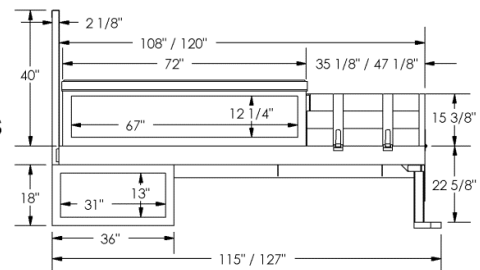
REAR VIEW DIMENSIONS



12-FT SIDE VIEW DIMENSIONS



9-FT / 10-FT  
SIDE VIEW  
DIMENSIONS



**NOTE:**

- 1) DOOR COMPARTMENT DIMENSIONS ARE THE CLEAR DOOR OPENING.
- 2) STANDARD FORKLIFT LOADABLE RACK NOT SHOWN.
- 3) DRAWING ABOVE SHOWN WITH OPTIONAL UNDER BED BOXES.

# ***Standard Contractors***

## **OUR STANDARD CONTRACTOR MODEL, BUT THERE'S NOTHING STANDARD ABOUT IT...**

- BEGIN WITH AN AWESOME HARBOR PLATFORM BODY WITH A HARDWOOD DECK
- ADD TWO (2) DECK MOUNTED OPEN-TOP BOXES WITH STAINLESS STEEL SELF-OPENING POP-TOP LIDS
  - 72"L x 18"H x 20"D ON 9-FOOT AND 10-FOOT BODIES (**BEST IN INDUSTRY**)
  - 96"L x 18"H x 20"D ON 12-FOOT AND 14-FOOT BODIES (**BEST IN INDUSTRY**)
- ADD EXTRA HEAVY-DUTY TAPERED-LEG SIDE LOADER RACK WITH 4" LONGITUDINAL (**BEST IN INDUSTRY**)
- ADD FULL WIDTH DOCK BUMPER (**BEST IN INDUSTRY**)
- ADD FOLD-DOWN SOLID-SIDE HARDWOOD GATES 10" HIGH AND AUTO BRITE STEEL GATE POSTS

**CHOOSE WHITE OR BLACK (FOR AN ADDITIONAL CHARGE) AND VOILA, (THAT'S FRENCH!) YOU HAVE THE BEST STANDARD CONTRACTOR IN THE INDUSTRY, BAR NONE.**

### **SOME OPTIONS AVAILABLE:**

- |   |                                    |
|---|------------------------------------|
| 1. DO YOU WANT A DIAMOND PLATE DECK?            | THEY CERTAINLY LAST LONGER!        |
| 2. DO YOU WANT STEEL GATES INSTEAD OF HARDWOOD? | WE CAN ADD THAT OPTION TOO!        |
| 3. DO YOU WANT AN ALUMINUM DECK & GATES?        | LIGHTEST AND MOST DURABLE PRODUCT! |

### **IT ALSO INCLUDES THESE OUTSTANDING FEATURES**

- ADD DROP-IN WOOD DIVIDER AT REAR OF TOP BED BOXES
- STEEL FRONT HEADBOARD
  - SOLID STEEL LOWER
  - TURRET PUNCHED UPPER
- CROSS MEMBERS ON 16" CENTERS EXCEPT AROUND GATE POCKETS
- ROPE HOOKS MOUNTED AT CONVENIENT OUTWARD ANGLE UNDERSIDE OF BED ON EACH CROSSMEMBER
- FULLY INSTALLED MUD FLAPS



# Standard Contractors

## FOR 60" CA DRW

Part Number	Description	LENGTH	WIDTH	MSRP
HTCO10896-PL	9-Ft. Standard Contractor w/ <b>Hard Wood Deck</b> , (2) Top Bed Boxes, (72"L x 18"H x 20"D) & Fold-Down Wood Gates & Rack.	108"	96"	\$10,410
HTCO10896-PLD	9-Ft. Standard Contractor w/ <b>Steel Diamond Plate Deck</b> , (2) Top Bed Boxes, (72"L x 18"H x 20"D) & Fold-Down Wood Gates & Rack.	108"	96"	\$11,179
HTCO10896-PLA	9-Ft. Standard Contractor w/ <b>Aluminum Deck</b> , (2) Top Bed Boxes, (72"L x 18"H x 20"D) & Fold-Down Wood Gates & Rack.	108"	96"	\$11,324

### STANDARD EQUIPMENT

HTFBH8T	40" High Tapered Headboard. Solid Steel Lower; Turret Punched Upper	INC
YCONWHITE	Coat Harbor White	INC
RKFBFLT108-96-(R/E)	"Side Loader" Extra Heavy-Duty Tapered-Leg Rack w/ 4" Drop-Down Longitudinal	INC
TBO721820 (2x)	Top Mounted Box— 72"Lx18"Hx20"D w/Dividers and Pop-Top Lids	INC
MREAR-APRON	Stainless Steel Vanity Plate Between Dock Bumper Uprights-Hides Clutter Under the Deck	INC

**Prices Below Show Packages. (e.g. Aluminum Deck w/ Aluminum Gates) However, all Fold-Down Gates can be Mixed & Matched w/ Other Bodies. (e.g. Wood Deck w/ Steel Gates, etc.)**

MFOLDDOWN	Fold-Down Feature Added to Hardwood Gates	N/C
MFOLDDOWN-STEEL	Use Steel Slats in Lieu of Wood Slats	\$425
MFOLDDOWN-ALUM	Use Aluminum Slats in Lieu of Wood Slats	\$735

### OPTIONAL EQUIPMENT

UB361818	Under Bed Boxes (36"Lx18"Hx18"D) In Front of Wheels	\$706 EA
UB241818	Under Bed Box (24"Lx18"Hx18"D) Behind Wheels	\$706 EA
MREC-LAND V <sup>1</sup>	Class V Receiver – 2 ½" Tube; A-Braced to Frame (15,000 lb. Gross Trailer Wt., 1,500 lb. Tongue Wt.)	\$734
MREC-LAND VI 2.5 <sup>1</sup>	Class VI Receiver – 2 ½" Tube; A-Braced to Frame (20,000 lb. Gross Trailer Wt., 2,000 lb. Tongue Wt.)	\$842
M7PRONG	Standard 7-Prong Trailer Connector	\$229
M7/4PRONG	Standard 7/4-Prong Trailer Connector	\$335
YCON-RED <sup>2</sup>	Single Stage Non-Clear Coat Red Only	\$1,496
YCON-BLACK <sup>2</sup>	Single Stage Non-Clear Coat Harbor Black (add \$100 for Diamond Plate Deck)	\$375
YCONMETALIC <sup>2</sup>	Multiple Stage Clear Coat Metallic to Match Cab Color	-

<sup>1</sup> Reference Vehicle GCWR for Specific Vehicle Weight Limitation

<sup>2</sup> Perfect Color Match with Cab NOT Guaranteed

# Standard Contractors

## FOR 60" CA DRW

Part Number	Description	LENGTH	WIDTH	MSRP
HTCO12096-PL	10-Ft. Standard Contractor w/ <b>Hardwood Deck</b> , (2) Top Bed Boxes, (72"L x 18"H x 20"D) & Fold-Down Wood Gates & Rack.	120"	96"	\$10,199
HTCO12096-PLD	10-Ft. Standard Contractor w/ <b>Steel Diamond Plate Deck</b> , (2) Top Bed Boxes, (72"L x 18"H x 20"D) & Fold-Down Wood Gates & Rack.	120"	96"	\$11,199
HTCO12096-PLA	10-Ft. Standard Contractor w/ <b>Aluminum Deck</b> , (2) Top Bed Boxes, (72"L x 18"H x 20"D) & Fold-Down Wood Gates & Rack.	120"	96"	\$12,199

### STANDARD EQUIPMENT

HTFBH8T	40" High Tapered Headboard. Solid Steel Lower, Turret Punched Upper	INC
YCONWHITE	Coat Harbor White	INC
RKFBFLT120-96-(R/E)	"Side Loader" Extra Heavy-Duty Tapered-Leg Rack w/ 4" Drop-Down Longitudinal	INC
TBO721820 (2x)	Top Mounted Box— 72"Lx18"Hx20"D w/ Dividers and Pop-Top Lids	INC
MREAR-APRON	Stainless Steel Vanity Plate Between Dock Bumper Uprights-Hides Clutter Under the Deck	INC

**Prices Below Show Packages. (e.g. Aluminum Deck w/ Aluminum Gates) However, all Fold-Down Gates can be Mixed & Matched w/ Other Bodies. (e.g. Wood Deck w/ Steel Gates, etc.)**

MFOLDDOWN	Fold-Down Feature Added to Hardwood Gates	N/C
MFOLDDOWN-STEEL	Use Steel Slats in Lieu of Wood Slats	\$375
MFOLDDOWN-ALUM	Use Aluminum Slats in Lieu of Wood Slats	\$789

### OPTIONAL EQUIPMENT

UB361818	Under Bed Boxes (36"Lx18"Hx18"D) Front of Wheels	\$688 EA
UB241818	Under Bed Box (24"Lx18"Hx18"D) Behind Wheels	\$688 EA
MREC-LAND V <sup>1</sup>	Class V Receiver – 2 ½" Tube; A-Braced to Frame (15,000 lb. Gross Trailer Wt., 1,500 lb. Tongue Wt.)	\$789
MREC-LAND VI 2.5 <sup>1</sup>	Class VI Receiver – 2 ½" Tube; A-Braced to Frame (20,000 lb. Gross Trailer Wt., 2,000 lb. Tongue Wt.)	\$846
M7PRONG	Standard 7-Prong Trailer Connector	\$218
M7/4PRONG	Standard 7/4-Prong Trailer Connector	\$316
YCON-RED <sup>2</sup>	Single Stage Non-Clear Coat Red Only	\$1,624
YCON-BLACK <sup>2</sup>	Single Stage Non-Clear Coat Harbor Black (Add \$100 for Diamond Plate Deck)	\$384
YCONMETALIC <sup>2</sup>	Multiple Stage Clear Coat Metallic to Match Cab Color	-

<sup>1</sup> Reference Vehicle GCWR for Specific Vehicle Weight Limitation

<sup>2</sup> Perfect Color Match with Cab NOT Guaranteed



# Standard Contractors

## FOR 84" CA DRW

Part Numbers	Description	LENGTH	WIDTH	MSRP
HTCO14496-PL	12-Ft. Standard Contractor w/ <b>Hardwood Deck</b> , (2) Top Bed Boxes, (96"L x 18"H x 20"D) & Fold-Down Wood Gates & Rack.	144"	96"	\$10,345
HTCO14496-PLD	12-Ft. Standard Contractor w/ <b>Steel Diamond Plate Deck</b> , (2) Top Bed Boxes, (96"L x 18"H x 20"D) & Fold-Down Wood Gates & Rack.	144"	96"	\$11,224
HTCO14496-PLA	12-Ft. Standard Contractor w/ <b>Aluminum Deck</b> , (2) Top Bed Boxes, (96"L x 18"H x 20"D) & Fold-Down Wood Gates & Rack.	144"	96"	\$11,894

### STANDARD EQUIPMENT

HTFBH8T	40" High Tapered Headboard. Solid Steel Lower; Turret Punched Upper	INC
YCONWHITE	Coat Harbor White	INC
RKFBFLT144-96-(R/E)	"Side Loader" Extra Heavy-Duty Tapered-Leg Rack w/ 4" Drop-Down Longitudinal	INC
TBO961820 (2x)	Top Mounted Box— 96"Lx18"Hx20"D w/ Dividers and Pop-Top Lids	INC
MREAR-APRON	Stainless Steel Vanity Plate Between Dock Bumper Uprights-Hides Clutter Under the Deck	INC

**Prices Below Show Packages (e.g. Aluminum Deck w/ Aluminum Gates) However, all Fold-Down Gates can be Mixed & Matched w/ Other Bodies. (e.g. Wood Deck w/ Steel Gates, etc.)**

MFOLDDOWN	Fold-Down Feature Added to Hardwood Gates	N/C
MFOLDDOWN-STEEL	Use Steel Slats in Lieu of Wood Slats	\$375
MFOLDDOWN-ALUM	Use Aluminum Slats in Lieu of Wood Slats	\$729

### OPTIONAL EQUIPMENT

UB601818	Under Bed Boxes (56"Lx18"Hx18"D) Front of Wheels	\$789 EA
UB361818	Underbed Box (36"Lx18"Hx18"D) for 9-ft. Contractor- Behind Wheels	\$678 EA
MREC-LAND V <sup>1</sup>	Class V Receiver – 2 ½" Tube; A-Braced to Frame (15,000 lb. Gross Trailer Wt., 1,500 lb. Tongue Wt.)	\$724
MREC-LAND VI 2.5 <sup>1</sup>	Class VI Receiver – 2 ½" Tube; A-Braced to Frame (20,000 lb. Gross Trailer Wt., 2,000 lb. Tongue Wt.)	\$826
M7PRONG	Standard 7-Prong Trailer Connector	\$234
M7/4PRONG	Standard 7/4-Prong Trailer Connector	\$349
YCON-RED <sup>2</sup>	Single Stage Non-Clear Coat Red Only	\$1,492
YCON-BLACK <sup>2</sup>	Single Stage Non-Clear Coat Harbor Black (add \$100 for Diamond Plate Deck)	\$381
YCONMETALIC <sup>2</sup>	Multiple Stage Clear Coat Metallic to Match Cab Color	-

<sup>1</sup> Reference Vehicle GCWR for Specific Vehicle Weight Limitation

<sup>2</sup> Perfect Color Match with Cab NOT Guaranteed

# Standard Contractors

## FOR 108" CA DRW

Part Numbers	Description	LENGTH	WIDTH	MSRP
HTCO16896-PL	14-Ft. Standard Contractor w/ <b>Hardwood Deck</b> , (2) Top Bed Boxes, (96"L x 18"H x 20"D) & Fold-Down Wood Gates & Rack.	168"	96"	\$12,291
HTCO16896-PLD	14-Ft. Standard Contractor w/ <b>Steel Diamond Plate Deck</b> , (2) Top Bed Boxes, (96"L x 18"H x 20"D) & Fold-Down Wood Gates & Rack.	168"	96"	\$12,791
HTCO16896-PLA	14-Ft. Standard Contractor w/ <b>Aluminum Deck</b> , (2) Top Bed Boxes, (96"L x 18"H x 20"D) & Fold-Down Wood Gates & Rack.	168"	96"	\$13,091

### STANDARD EQUIPMENT

HTFBH8T	40" High Tapered Headboard. Solid Steel Lower; Turret Punched Upper	INC
YCONWHITE	Coat Harbor White	INC
RKFBFLT168-96-(R/E)	"Side Loader" Extra Heavy-Duty Tapered-Leg Rack w/ 4" Drop-Down Longitudinal	INC
TBO961820 (2x)	Top Mounted Box— 96"Lx18"Hx20"D w/Dividers and Pop-Top Lids	INC
MREAR-APRON	Stainless Steel Vanity Plate Between Dock Bumper Uprights-Hides Clutter Under the Deck	INC

**Prices Below Show Packages (e.g. Aluminum Deck w/ Aluminum Gates) However, all Fold-Down Gates can be Mixed & Matched w/ Other Bodies. (e.g. Wood Deck w/ Steel Gates, etc.)**

MFOLDDOWN	Fold-Down Feature Added to Hardwood Gates	N/C
MFOLDDOWN-STEEL	Use Steel Slats in Lieu of Wood Slats	\$368
MFOLDDOWN-ALUM	Use Aluminum Slats in Lieu of Wood Slats	\$739

### OPTIONAL EQUIPMENT

UB601818	Under Bed Boxes (56"Lx18"Hx18"D) Forward of Wheels	\$788 EA
UB361818	Underbed Box (36"Lx18"Hx18"D) Behind Wheels	\$645 EA
MREC-LAND V <sup>1</sup>	Class V Receiver – 2 ½" Tube; A-Braced to Frame (15,000 lb. Gross Trailer Wt., 1,500 lb. Tongue Wt.)	\$739
MREC-LAND VI 2.5 <sup>1</sup>	Class VI Receiver – 2 ½" Tube; A-Braced to Frame (20,000 lb. Gross Trailer Wt., 2,000 lb. Tongue Wt.)	\$824
M7PRONG	Standard 7-Prong Trailer Connector	\$217
M7/4PRONG	Standard 7/4-Prong Trailer Connector	\$316
YCON-RED <sup>2</sup>	Single Stage Non-Clear Coat F1 Red Only	\$1,478
YCON-BLACK <sup>2</sup>	Single Stage Non-Clear Coat Harbor Black (add \$100 for Diamond Plate Deck)	\$368
YCONMETALIC <sup>2</sup>	Multiple Stage Clear Coat Metallic to Match Cab Color	-

<sup>1</sup> Reference Vehicle GCWR for Specific Vehicle Weight Limitation

<sup>2</sup> Perfect Color Match with Cab NOT Guaranteed

# Standard Contractors

RACK ACCESSORIES		
<b>RKTOFB</b>	Extend Standard Rack to Front Bumper	\$1,439
<b>RK35</b>	Conduit Box With Rear Door (123"L x 6"H x 9.5"W)	\$984
<b>RK36FE</b>	Conduit Box Fully Enclosed With Rear Hinged Door & Hinged Lid. (123"Lx6"Hx9.5"W)	\$1,394
<b>RK50</b>	Two (2) Conduit Pockets	\$729
<b>RK60</b>	Expanded Metal Roof Shield	\$718
<b>RK61</b>	14 GA. Galvanized Steel Roof Shield Punched on Turret Press	\$624
<b>RK65</b>	Front Stop for Rack	\$308
<b>RK90</b>	Stainless Covers for Cross Bars on Racks (Price per Cross Bar)	\$218
<b>MSTRAPS</b>	Two (2) Rack Straps – Ratchets up to 500 lb. Tension	\$402
OTHER STANDARD OPTIONS		
<b>LOK-AOK-FORD (x__)</b>	Harbor ALL-ONE-KEY Door Locks (Keyed at Our Factory to Match the Vehicle Ignition Key)	\$68 EA
<b>M7PRONG</b>	Standard 7-Prong Trailer Connector	\$284
<b>M7/4PRONG</b>	Standard 7/4-Prong Trailer connector	\$345
<b>MACTIRE</b>	Spare Tire Carrier Mount Behind Bulkhead Only.	\$319
<b>MHITCH01</b>	Kerins K200 & K750 Multi Hitch and Adaptor – Must Also Order the MREC-LAND, MREC-LAND V, or MREC-LAND-VI option	\$324
<b>MLSBRB-LED</b>	Rotating LED Strobe on Mounting Pad i.e. Mounts on Rack or Headboard Only, Not Roof. Lighted Cab Switch Included. ECCO 7965 LED Light, or Equivalent.	\$699
<b>MLSBRB-LED-POLE</b>	Rotating LED Strobe with Mounting Pad on Separate Pedestal Pole. Lighted Cab Switch Included. ECCO 7965 Light, or Equivalent.	\$754
<b>MLTBAR-C</b>	Light Bar Mounted on Separate Rack Behind Cab. Wired Through Back Bottom of Cab, Not Through Headliner. Whelen TAC F85LH, or Equivalent.	\$2,678
<b>MTIREUB</b>	Spare Tire Carrier Mounted Under Front Portion of Flatbed Deck in Lieu of Front Under Bed Box. This is Only Location That Works Under the Bed.	\$967
<b>UBSTAKEBOX</b>	12 Ga. Turret Punched 36"Dx21"W w/ Slanted Opening (rear opening only). <b>(Only Applies to 10-ft. Flatbeds and Larger)</b>	\$999
BACKUP CAMERAS		
10,001 LB GVWR AND OVER (OPTIONAL)		
<b>ALL STANDARD CONTRACTORS ARE OVER 10,000 LB GVWR, BACKUP CAMERAS ARE OPTIONAL</b>		
<b>MBCK-UP-CAM-LB1</b>	For Chassis Cab <b>WITH</b> Backup Camera Ready, and Factory Supplied Camera and Harness.	\$186
<b>MBCK-UP-FD-872D <sup>1</sup></b>	For Chassis Cab <b>ONLY WITH</b> Backup Camera Ready (No Camera and Harness Supplied).	\$351
<b>MBCK-UP-CAM-FORD1 <sup>1</sup></b>	For Chassis Cab <b>WITHOUT</b> Backup Camera Ready, and Factory Supplied Camera and Harness, <b>BUT</b> Has Factory Monitor in Dash or in Rearview Mirror.	\$678
<b>MBCK-UP <sup>2</sup></b>	For Chassis Cab <b>WITHOUT</b> Backup Camera Ready, Factory Supplied Camera and Harness, nor Factory Monitor in Dash or in Rearview Mirror.	\$682
<sup>1</sup> Aftermarket Camera Selected by Harbor Based On Capability of Meeting FMVSS Will Be Used.		
<sup>2</sup> Aftermarket Camera and Monitor Selected by Harbor Based On Capability of Meeting FMVSS. Monitor Will Be Mounted Near Top Center of Dash.		

# ***The 'Saw' Body***

***Tough to the Core....***

***14-ft. Harbor Saw Body & Interlift ILK-33 Liftgate***



***16-ft. Harbor Saw Body w/ Standard Side Compartments***



***Side View of 16-ft. Saw Body Compartment Detail***





# ***The 'Saw' Body***

## ***Tough to the Core....***

### **ANOTHER INDUSTRY FIRSTS FROM THE MANUFACTURER OF THE BEST BUILT BODIES IN AMERICA**

- HARBOR'S SAW BODY HAS QUICKLY ASCENDED TO BECOME THE INDUSTRY LEADER.
- INITIALLY A COLLABORATIVE EFFORT WITH A LOCAL DEALER AND SOME OF OUR FAVORITE LOCAL CONCRETE CUTTERS AND SUPPLIERS, THE BODY FOUND SALES TRACTION AT 'THE WORLD OF CONCRETE' SHOW AND HAS BEEN SOLD NATIONWIDE EVER SINCE
- THE MAJOR BODY FEATURES ARE:
  - 14-FT. AND 16-FT. CONFIGURATIONS (THE MAJOR DIFFERENCE IS A LARGER REAR DECK [80"x92"] ON THE 16-FT. MODEL THAT PERMITS EXTRA STORAGE OF AN EXTRA SAW AND TWO [2] SLURRY TANKS MACHINES.)
  - A STREET SIDE CABINET SPECIFICALLY DESIGNED TO STORE 24" & 36" SAW BLADES, HAND SAWS, AND FUEL CONTAINERS.
  - A CURB SIDE STORAGE COMPARTMENT DESIGNED WITH TWO (2) CORING MACHINE HOLDERS, FOUR (4) CORING BIT HOLDERS ON REAR WALL AND FLOOR, AND SPECIALIZED SHELVING TO HOLD JUST ABOUT ANY SIZE CORING BIT YOU CAN IMAGINE.
  - 4 ADDITIONAL COMPARTMENTS DESIGNED FOR STORAGE OF HOSE REELS AND AEROSOL CONTAINERS.
  - DOUBLE-WALLED REAR SIDE PANEL WITH OPTIONAL DOOR TO ACCESS EQUIPMENT CONTROLS OF MACHINES MOUNTED ON REAR DECK.
  - A REINFORCED FLOOR AREA LARGE ENOUGH TO MOUNT EITHER A 220 GAL. GENERAL SERVICE TANK OR A LARGER 330 GAL. TANK FOR YOU PIPE FITTERS AND OTHER CONTRACTORS PERFORMING HEAVY DUTY TASKS. YOU STILL HAVE ROOM TO INSTALL A ONAN OR HANCO GENERATOR BEHIND THAT. AND CARRY LARGE SAWS, BLADES AND SLURRY TANKS.
  - ADEQUATE SPACING HAS BEEN PROVIDED FOR UNDER DECK PLUMBING WHERE TANK ATTACHMENT FITTINGS CAN BE MOUNTED (YOU CHOOSE BOTH IN REAR, OR FRONT AND REAR) AS WELL AS HOSE REELS AND PRESSURE WASHERS.
- THE CHOICE OF LIFTGATES IS BETWEEN A PALFINGER INTERLIFT ILK22 AND ILK32 CANTILEVER LIFTGATE SPECIFIED SO SAW MACHINES CAN BE EASILY LOADED OR UNLOADED.

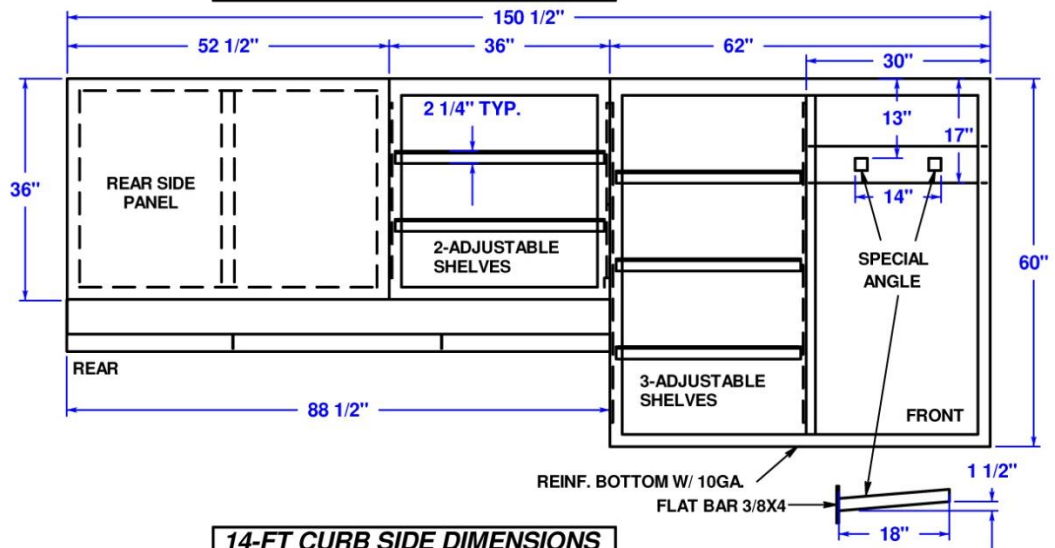
### **Plus These Industry-First Features by Harbor**

- **Exclusive NeXtGen Weather Shield protection to weather your toughest driving conditions** – Our unique design consisting of 2 neoprene door seals, 1-piece compartment backwrapper with integral roll for pop-top lids, waterproof gaskets and self-sealing rivets stops water from leaking in around doors, lids, locks and door hinges.
- **Lock-tight shelving keeps your tools organized even in harsh off-road settings** – Adjustable shelves lock into place preventing tools from dumping. There are no old-fashioned shelf tabs that shear off due to shelf vibration.
- **Best rust and corrosion busters!**—All electro-galvanized sheet metal construction; finest cleaning and phosphate pre-treatment system prior to painting; PPG's finest automotive finish coat; bumpers and racks powder coated for extra durability; piano hinge and pin on cargo bed enclosure door, conduit box door and rear access doors all stainless and rust-proof; all expanded metal parts hot-dip galvanized.
- **Toughest locking devices to protect the tools of your livelihood** – Silky smooth 3-point locking system; automotive quality Harbor locks with water resistant dust covers, double-bit keys, all locking devices attached with all stainless steel rivets to resist unwanted break-ins without special tools; add Harbor's NeXtGen MasterLock option for additional protection and peace of mind.

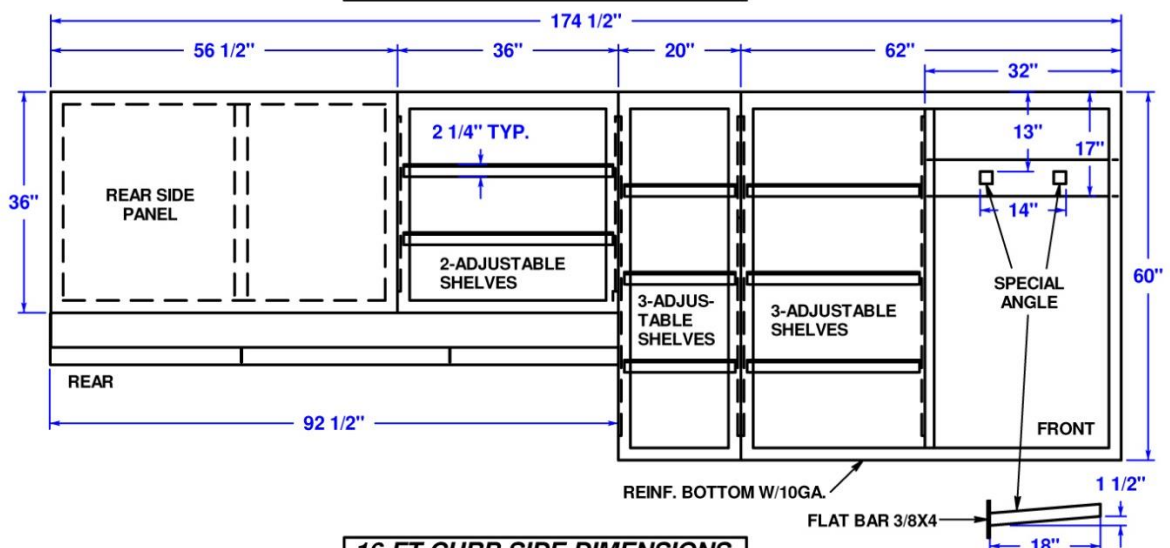
# The 'Saw' Body

*Tough to the Core....*

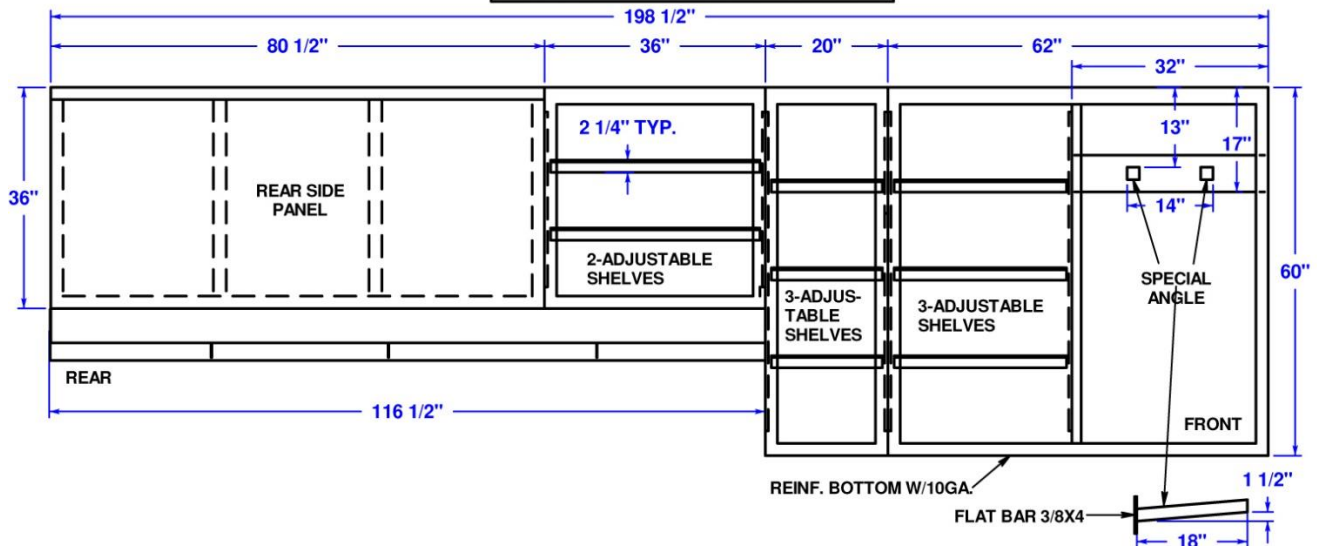
## 12-FT CURB SIDE DIMENSIONS



## 14-FT CURB SIDE DIMENSIONS



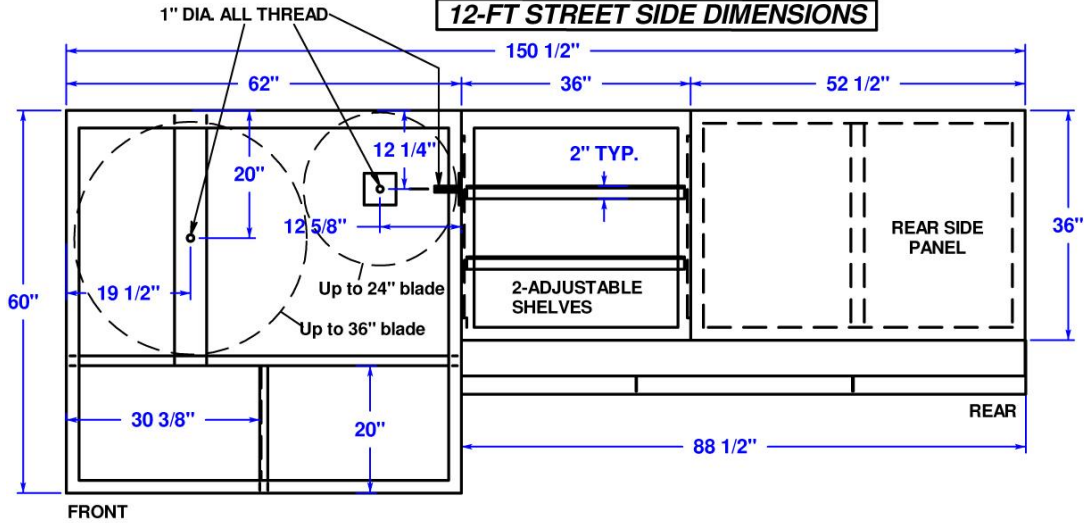
## 16-FT CURB SIDE DIMENSIONS



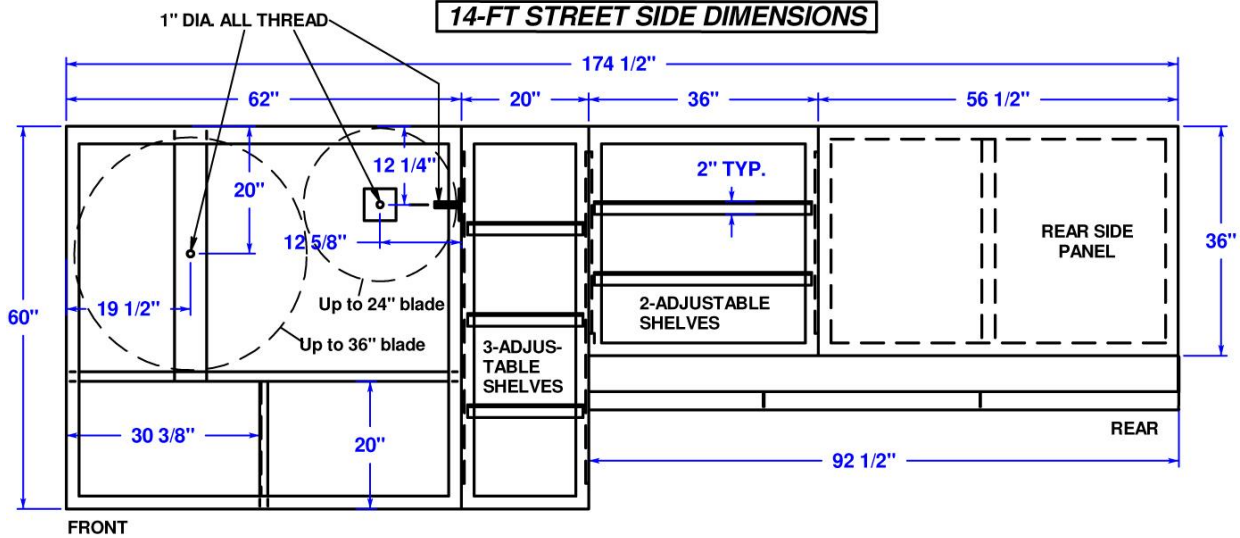
# The 'Saw' Body

*Tough to the Core....*

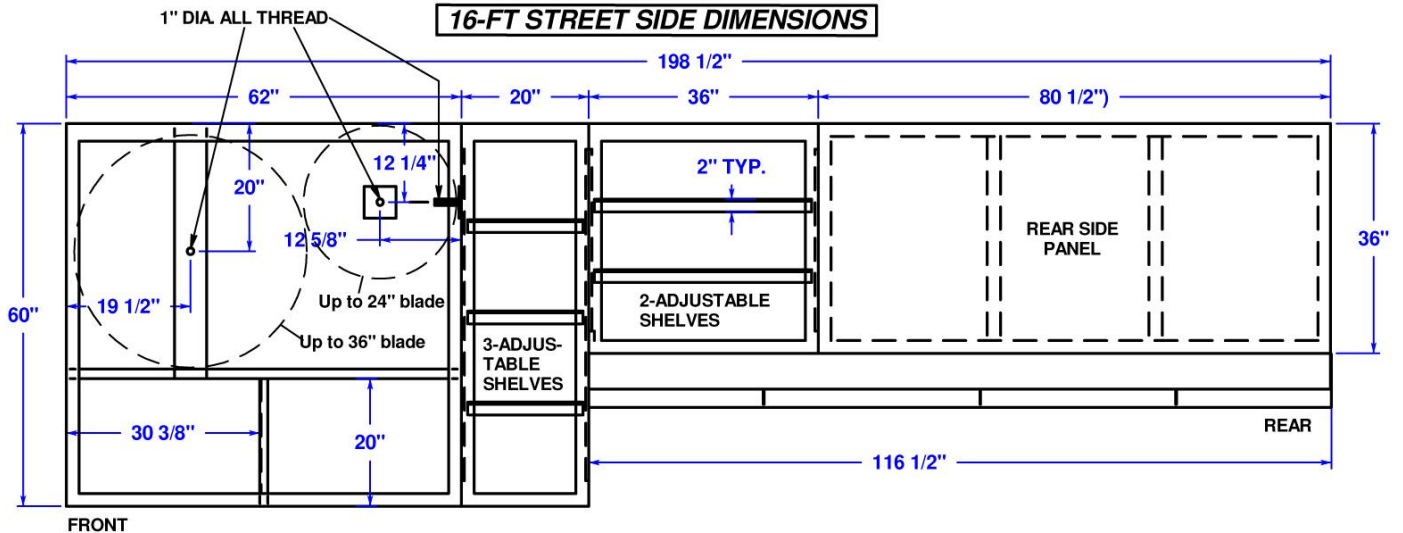
## 12-FT STREET SIDE DIMENSIONS



## 14-FT STREET SIDE DIMENSIONS



## 16-FT STREET SIDE DIMENSIONS



# The 'Saw' Body

**Tough to the Core....**

**FOR F-550 84" CA MIN. 19,500 GVWR**

MODEL NUMBER	BODY LENGTH	COMPT DEPTH	COMPT HEIGHT	FRONT FLOOR WIDTH	REAR FLOOR WIDTH	M.S.R.P.
<b>HTSAW12-22</b> 12-ft. Saw Body w/ Interlift ILK22 Cantilever Liftgate	150 ½"	23"	60"/36"	48 ¾"	92"	Quote
<b>HTSAW12-33</b> 12-ft. Saw Body w/ Interlift ILK33 Cantilever Liftgate	150 ½"	23"	60"/36"	48 ¾"	92"	Quote
<b>PAINT OPTIONS</b>						
<b>Y12SAWWHITE</b>	Painted Harbor White					INC

**FOR F-550 108" CA MIN. 19,500 GVWR**

MODEL NUMBER	BODY LENGTH	COMPT DEPTH	COMPT HEIGHT	FRONT FLOOR WIDTH	REAR FLOOR WIDTH	M.S.R.P.
<b>HTSAW14-22</b> 14-ft. Saw Body w/ Interlift ILK22 Cantilever Liftgate	174 ½"	23"	60"/36"	48 ¾"	92"	Quote
<b>HTSAW14-33</b> 14-ft. Saw Body w/ Interlift ILK33 Cantilever Liftgate	174 ½"	23"	60"/36"	48 ¾"	92"	Quote
<b>PAINT OPTIONS</b>						
<b>Y14SAWWHITE</b>	Painted Harbor White					INC

**FOR F-550 120" CA MIN. 19,500 GVWR**

MODEL NUMBER	BODY LENGTH	COMPT DEPTH	COMPT HEIGHT	FRONT FLOOR WIDTH	REAR FLOOR WIDTH	M.S.R.P.
<b>HTSAW16-22</b> 16-ft. Saw Body w/ Interlift ILK22 Cantilever Liftgate	198 ½"	23"	60"/36"	48 ¾"	92"	Quote
<b>HTSAW16-33</b> 16-ft. Saw Body w/ Interlift ILK33 Cantilever Liftgate	198 ½"	23"	60"/36"	48 ¾"	92"	Quote
PAINT OPTIONS						
Y16SAWWHITE		Painted Harbor White				INC
STANDARD EQUIPMENT						
SAW001	Saw Body Consists of Three (3) Consecutive Compartments Curb Side, Street Side, & a Rear End Side Panel. The Liftgate Serves as a Rear Door.					INC
SAW002	Compartment #1 Street Side (SS) is 60"Hx62"Wx23"D With Three (3) Threaded Blade Holders for 24" & 36" Saw Blades.					INC
SAW003	Compartment #1 (SS) also Includes Two (2) Lower 30"Wx20"H Internal Compartments to Hold Hand Saws.					INC



# The 'Saw' Body

## Tough to the Core....

STANDARD EQUIPMENT (CONTINUED)		
SAW004	Compartment #2 (SS) is 60"Hx20"Wx23"D with Three (3) Adjustable Shelves for General Storage. (Ideal for Aerosol Storage/ Misc.)	INC
SAW005	Compartment #3 (SS) Begins at Floor Height and is 36"Hx36"Wx23"D with Two (2) Adjustable Shelves for General Storage. (Ideal for Hose Reels.)	INC
SAW006 SAW007	Rear Side Panel (SS) is Double-Walled and is 36"Hx56 ½"W. At Time of Order it is Possible to Add Double Doors to Rear Panel to Access Equipment Controls when Equipment is Mounted Behind Panel.	INC
SAW008 SAW009 SAW010	Compartment #1 Curb Side (CS) is 60"Hx62"Wx23"D with Dual Coring Machine Holders of 2.5" x2.5" Tubing Mounted on Wall Toward Front & (4) Coring Bit Holders Mounted on Rear Wall & Back Floor. With Three (3) Adjustable Shelves with Dividers for Enormous Coring Bit Storage.	INC
SAW011	Compartment #2 (CS) is 60"Hx20"Wx23"D With Three (3) Adjustable Shelves for General Storage.	INC
SAW012	Compartment #3 (CS) Begins at Floor Height and is 36"Hx36"Wx23"D with Three (3) Adjustable Shelves for General Storage.	INC
SAW013 SAW014	Rear Side Panel (CS) is Double-Walled and is 36"Hx56 ½"W. At Time of Order it is Possible to Add Double Doors to Rear Panel to Access Equipment Controls when Equipment is Mounted Behind Panel.	INC
SAW015	Interlift IL-ILK-22 Liftgate with 48"x94" Rear Platform and 2,200lb Lifting Capacity.	INC
SAW016	Interlift IL-ILK-33 Liftgate with 48"x92" Rear Platform and 3,300lb Lifting Capacity.	INC
OPTIONAL EQUIPMENT		
6DAV00002	Door, 16"Hx18"W Opening. Added to Rear Side Panel as Opening to Deck-Mounted Equipment Controls.	\$428
BACKUP CAMERAS		
10,001 LB GVWR AND OVER (OPTIONAL)		
ALL STANDARD CONTRACTORS ARE OVER 10,000 LB GVWR, BACKUP CAMERAS ARE OPTIONAL		
SEO	For Chassis Cab <b>WITH</b> Backup Camera Ready, and Factory Supplied Camera and Harness.	\$318
SEO <sup>1</sup>	For Chassis Cab <b>ONLY WITH</b> Backup Camera Ready (No Camera and Harness Supplied).	\$428
SEO <sup>1</sup>	For Chassis Cab <b>WITHOUT</b> Backup Camera Ready, and Factory Supplied Camera and Harness, <b>BUT</b> Has Factory Monitor in Dash or in Rearview Mirror.	\$764
SEO <sup>2</sup>	For Chassis Cab <b>WITHOUT</b> Backup Camera Ready, Factory Supplied Camera and Harness, nor Factory Monitor in Dash or in Rearview Mirror.	\$822
<sup>1</sup> Aftermarket Camera Selected by Harbor Based On Capability of Meeting FMVSS Will Be Used.		
<sup>2</sup> Aftermarket Camera and Monitor Selected by Harbor Based On Capability of Meeting FMVSS. Monitor Will Be Mounted Near Top Center of Dash.		

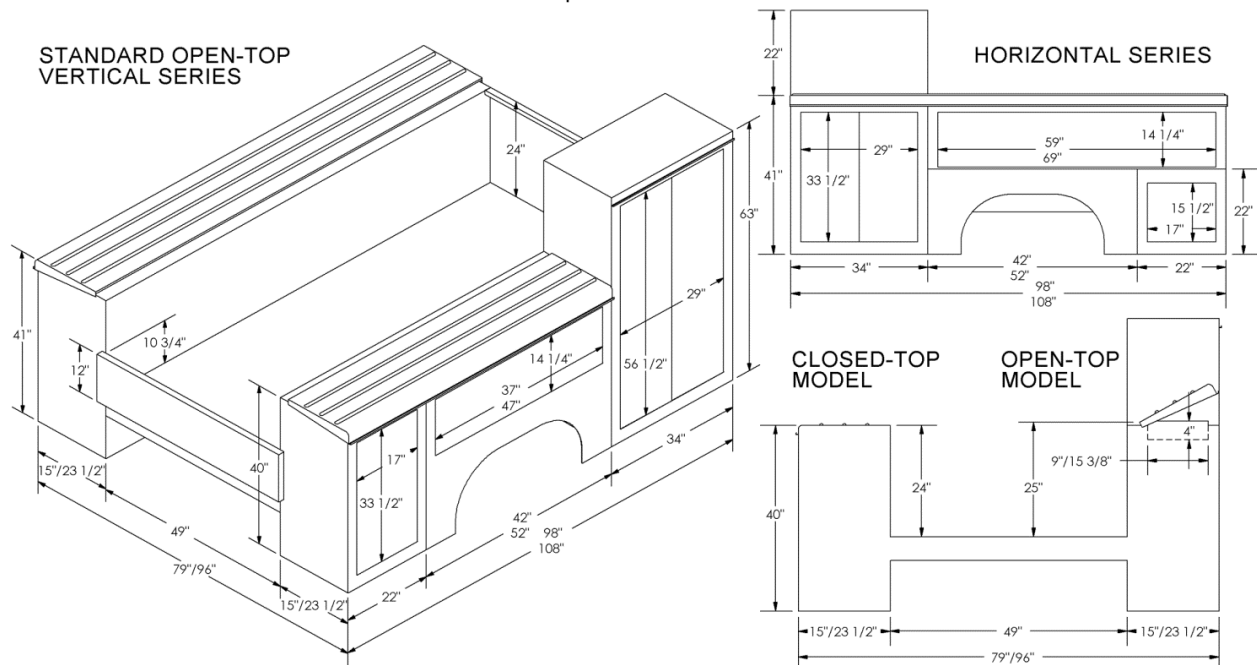
# WeldMaster

## 11-Ft WeldMaster W/Heavy Duty Rack & Class IV Receiver Option



## FORD 8-FT & 9-FT WELDMASTER DIMENSIONS

Last Update: 09/10/2018



# ***WeldMaster***

## ***Every Inch the Definition of Quality and Value...***

**.....MORE INDUSTRY FIRSTS FROM THE MANUFACTURER OF THE BEST BUILT BODIES IN AMERICA**

- **HARBOR NEXTGEN TRADEMASTER OFFERS NEW ENHANCED FEATURES:**
  - **NEXTGEN WEATHER SHIELD PROTECTION FEATURES INCLUDING DUAL SEALS ON ALL DOORS PROTECT THE TOOLS OF YOUR LIVELYHOOD**
  - **LARGER SIZE COMPARTMENTS FOR ALL DRW TRUCKS**
  - **RE-ENGINEERED CROSSMEMBERS ELIMINATE NEED FOR OPTIONAL 4X4 REINFORCEMENT**

### **HARBOR'S INDUSTRY-BEST FEATURES**

- **TWO (2) 63" RAISED FRONT COMPARTMENTS CURBSIDE AND STREETSIDE ON "WB" MODELS**
  - **BRACKETS AND RINGS TO SECURE OXYGEN/ACETYLENE BOTTLES STD. IN CURB SIDE RAISED COMPARTMENT**
  - **ALL RAISED COMPARTMENTS WITH BRACKETS AND RINGS LOUVERED ON SIDE PANEL AS REQUIRED FOR VENTILATION**
- **ALL MODELS STANDARD PROFILE (41" HEIGHT) (BEST IN INDUSTRY!)**
- **SELF-OPENING POP-TOP STAINLESS STEEL LIDS (BEST IN INDUSTRY!)**
- **63" SINGLE RAISED FRONT COMPARTMENT (CHOOSE SIDE) ON "WE" MODELS**
- **STAINLESS STEEL POP-TOP LIDS FOR STRENGTH AND CORROSION PROTECTION (BEST IN INDUSTRY!)**
- **HARBOR PUSH BUTTON LOCKS WITH VISIBLE RED BAND "OPEN" INDICATOR NOW A STANDARD FEATURE**
- **HARBOR ALL-ONE-KEY ("AOK") DOOR LOCKS (CONFIGURABLE TO THE IGNITION KEY) OPTION**
- **STAINLESS STEEL GRAVEL GUARDS FOR CORROSION PROTECTION (BEST IN INDUSTRY!)**
- **GAS SHOCK DOOR STAYS ON ALL VERTICAL DOORS (BEST IN INDUSTRY!)**
- **8" RECESSED STEP BUMPER FOR SURE FOOTING (BEST IN INDUSTRY!)**
- **TRUE V-NOTCHED BUMPER PERMITS WIDER TRAILER TURN ANGLE (BEST IN INDUSTRY!)**
- **ARMLESS, SELF SUPPORTING TAILGATE FOR ADDED WORK SPACE**
- **FULL 49" FLOOR TO CARRY ALL STANDARD MATERIALS**
- **TWO (2) GAS SHOCKS ON EACH OPEN LID**
- **TENSIONED METAL DIVIDERS IN OPEN TOP COMPARTMENT MAKE A SNUG FIT, AND CAN BE RELOCATED TO CREATE YOUR OWN STORAGE SPACE**
- **BEST OF ALL...HARBOR QUALITY!!!**

### **Plus These Industry-First Features by Harbor**

- **Exclusive NeXtGen Weather Shield protection to weather your toughest driving conditions** – Our unique design consisting of 2 neoprene door seals, 1-piece compartment backwrapper with integral roll for pop-top lids, waterproof gaskets and self-sealing rivets stops water from leaking in around doors, lids, locks and door hinges.
- **Lock-tight shelving keeps your tools organized even in harsh off-road settings** – Adjustable shelves lock into place preventing tools from dumping. There are no old-fashioned shelf tabs that shear off due to shelf vibration.
- **Best rust and corrosion busters!** – All electro-galvanized sheet metal construction; finest cleaning and phosphate pre-treatment system prior to painting; PPG's finest automotive finish coat; bumpers and racks powder coated for extra durability; piano hinge and pin on cargo bed enclosure door, conduit box door and rear access doors all stainless and rust-proof; all expanded metal parts hot-dip galvanized.
- **Toughest locking devices to protect the tools of your livelihood** – Silky smooth 3-point locking system; automotive quality Harbor locks with water resistant dust covers, double-bit keys, all locking devices attached with all stainless steel rivets to resist unwanted break-ins without special tools; add Harbor's NeXtGen MasterLock option for additional protection and peace of mind.

## Last Update: 09/10/2018



- NOTE:  
1) DOOR COMPARTMENT DIMENSIONS ARE THE CLEAR DOOR OPENING.  
2) ALL DIMENSIONS SHOWN ARE STANDARD.

Last Update: 09/20/2018



## DROP-IN TAILGATE

SRW

P/#	A	B	C	D	Rear Comp. Depth
F18X79-UB-16	18	79	14 3/4	11 3/4	15
F18X96-UB	18	96	14 3/4	11 3/4	23 1/2
F24X96-UB	24	96	20 3/4	17 3/4	23 1/2

Note: All dimensions are in inches.



# WeldMaster

Application/ Part Number	Description	Raised Compt. Ht.	Body Length	Compt. Depth	Compt Height	Floor Width	M.S.R.P
<b>PLEASE SPECIFY S/S (STREET SIDE) OR C/S (CURB SIDE) FOR WELDER COMPARTMENT WHEN ORDERING</b>							
<b>8-FT. FOR F350 56" CA SRW PU W/BOX DELETE</b>							
<u>HTWE098-1541A</u> (w/ Single Raised Front Compartment)		63"	98"	15"	41"	49"	\$10,219
<u>HTWB098-1541A</u> (w/ Raised Front Comps. Curb Side & Street Side)		63"	98"	15"	41"	49"	\$12,219
<b>8-FT. FOR F350 56" CA DRW PU W/BOX DELETE</b>							
<u>HTWE098-2341</u> (w/ Single Raised Front Compartment)		63"	98"	22"	41"	49"	\$10,967
<u>HTWB098-2341</u> (w/ Raised Front Comps. Curb Side & Street Side)		63"	98"	22"	41"	49"	\$12,377
<b>9-FT. FOR F350 60" CA SRW CHASSIS</b>							
<u>HTWE108-1541A</u> (w/ Single Raised Front Compartment)		63"	108"	22"	41"	49"	\$12,116
<u>HTWB108-1541A</u> (w/ Raised Front Comps. Curb Side & Street Side)		63"	108"	22"	41"	49"	\$13,816
<b>9-FT. FOR F350 &amp; F450 60" CA DRW CHASSIS</b>							
<u>HTWE108-2341A</u> (w/ Single Raised Front Compartment)		63"	108"	22"	41"	49"	\$11,375
<u>HTWB108-2341A</u> (w/ Raised Front Comps. Curb Side & Street Side)		63"	108"	22"	41"	49"	\$13,689
<b>11-FT. FOR F350, F450 &amp; F550 84" CA CHASSIS</b>							
<u>HTWE132-2341A</u> (w/ Single Raised Front Compartment)		63"	132"	22"	41"	49"	\$13,375
<u>HTWB132-2341A</u> (w/ Raised Front Comps. Curb Side & Street Side)		63"	132"	22"	41"	49"	\$14,687
<b>14-FT. FOR F450 &amp; F550 108" CA CHASSIS</b>							
<u>HTWE168-2341A</u> (w/ Single Raised Front Compartment)		63"	168"	22"	41"	49"	\$17,619
<u>HTWB168-2341A</u> (w/ Raised Front Comps. Curb Side & Street Side)		63"	168"	22"	41"	49"	\$19,027
<b>STANDARD EQUIPMENT</b>							
<b>Standard Paint and Mount, and Gravel Guards SAME as Corresponding TradeMaster Body</b>							
<b>MHOOK</b>	Hose Holder to Secure Oxygen/Acetylene Bottles in raised compartment						<b>INC</b>
<b>C07</b>	Bottle Brackets and Rings In One Raised Compartment. (Standard in First Compartment Only) <b>Important! Please Note:</b> Maximum Bottle Size For 63" Compartment: Oxygen 55" HT x 9-1/2" Dia. Acetylene 36-3/4" HT x 8-1/4" Dia.						<b>INC</b>

# WeldMaster

ADDITIONAL ACCESSORIES		
<b>C06</b>	Delete Front Compartment. Extend Floor to Exterior Edge of Body. Add UnderDeck Compartment Below Floor.	<b>\$1,568</b>
<b>C07</b>	Add Additional Bottle Brackets and Rings to Second Raised Compartment on HTWB Models. (Standard of First Compartment Only)	<b>\$984</b>
<b>C26</b>	Reinforce Top of First Compartments With 10 GA. for Mounting Additional Equipment (e.g. Compressors). Not Available with HTWB Bodies where Both Sides are Raised	<b>\$589</b>
<b>F98</b>	Reinforce Floor Behind Bulkhead to Carry 750 lb. of Additional Equipment, Machinery or Fluid Tanks	<b>\$702</b>
<b>F18X79-UB</b>	Rear Platform 3/16" Plate Smooth. 18" Deep, With Two (2) Under Deck Boxes, One on Each Side. Recessed Standard Rear Bumper with 8" Step. (SRW Bodies Only)	<b>\$3,891</b>
<b>F24X96-UB</b>	Rear Platform, 24" Deep, 3/16" Smooth Plate With Two (2) Under Deck Boxes, One on Each Side. Recessed Standard Rear Bumper with 8" Step. (9-ft. and 11-ft. DRW Bodies Only)	<b>\$4,028</b>
<b>FVNOTCH</b>	Add 3" V-Notch in Rear Platform Working Surface to Hold Pipe	<b>\$508</b>
<b>MINVTR</b>	Inverter w/ 115 Volt Outlet on Inverter Wagon Inverter 3000 Watts Continuous True Weighted Power (6,000 Watts Peak Surge Power. 115 Volts) Standard Mount Horizontal on Driver's Side Compartment.	<b>\$2,214</b>
<b>MGFI</b>	Additional GFI Outlet Must be Wired to Inverter (Requires MINVTR)	<b>\$357</b>
<b>MVISE-BUMPER</b>	Vise Bracket—"Drop In" on Bumper	<b>\$498</b>
<b>TG19-49</b>	19' Tailgate In Lieu of Standard Height 12" Tailgate. For Use on Standard Floor Widths Only	<b>\$276</b>
<b>TG-DROP-IN-WOOD</b>	Tailgate, 12" Drop-In Wood— Slides into Channel Mounted on Each Side.	<b>\$468</b>
<b>TG-DROP-IN-STEEL</b>	Tailgate, 12" Drop-In Steel— Slides into Channel Mounted on Each Side.	<b>\$582</b>
<b>TG-DROP-IN-STAINLE</b>	Tailgate, 12" Drop-In Stainless Steel— Slides into Channel Mounted on Each Side.	<b>\$702</b>
<b>TGA10GA</b>	Tailgate, Standard Size Reinforced with Smooth 10 GA. Inner Panel. Applies to Standard Size Tailgates Only	<b>\$219</b>
COMPARTMENT OPTIONS		<b>MSRP</b>
<b>CRB15</b>	<b>Single Raised Front Compartment w/ Bottle Brackets &amp; Rings</b> (Specify Side of Body). Compartment Height is 63" Maximum Bottle Size For 63" Compartment: Oxygen    55" HT x 9-1/2" Diameter. Acetylene 36-3/4" HT x 8-1/4" Diameter Includes Louvered Panel for Ventilation <b>For SRW Bodies Only</b>	<b>\$2,243</b>
<b>CRB23</b>	<b>Single Raised Front Compartment w/ Bottle Brackets &amp; Rings</b> (Specify Side of Body). Compartment Height is 63" Maximum Bottle Size For 63" Compartment: Oxygen    55" HT x 9-1/2" Diameter. Acetylene 36-3/4" HT x 8-1/4" Diameter Includes Louvered Panel for Ventilation <b>For DRW Bodies Only</b>	<b>\$2,710</b>
<b>CRS15</b>	<b>Single Raised Front Compartment w/ (2) Adjustable Shelves.</b> (Specify Side of Body) – <b>SRW Bodies Only</b>	<b>\$1,712</b>
<b>CRS23</b>	<b>Single Raised Front Compartment w/ (2) Adjustable Shelves.</b> (Specify Side of Body) – <b>DRW Bodies Only</b>	<b>\$1,912</b>
<b>SSF34X(15/23)</b>	<b>FIXED SHELF</b> for Front Compartment 34" wide.	<b>\$316 EA</b>

# WeldMaster

## BACKUP CAMERAS

10,000 LB GVWR AND UNDER **(MUST CHOOSE ONE)**

10,001 LB GVWR AND OVER (OPTIONAL)

**BACKUP CAMERAS ARE REQUIRE BY FMVSS 111 ON ALL TRUCKS 10,000 GVWR OR UNDER MANUFACTURED 5-1-2018 OR LATER**

<b>MBCK-UP-CAM-LB1</b>	For Pickup Bed Delete or Chassis Cab <b>WITH</b> Backup Camera Ready, and Factory Supplied Camera and Harness.	<b>\$194</b>
<b>MBCK-UP-FD-872R <sup>1</sup></b>	For Pickup Bed Removal (Factory Camera Can Not Be Reused).	<b>\$338</b>
<b>MBCK-UP-FD-872D <sup>1</sup></b>	For Pickup Bed Delete or Chassis Cab <b>ONLY WITH</b> Backup Camera Ready (No Camera and Harness Supplied).	<b>\$382</b>
<b>MBCK-UP-CAM-FORD1 <sup>1</sup></b>	For Pickup Bed Delete or Chassis Cab <b>WITHOUT</b> Backup Camera Ready, and Factory Supplied Camera and Harness, <b>BUT</b> Has Factory Monitor in Dash or in Rearview Mirror.	<b>\$610</b>
<b>MBCK-UP <sup>2</sup></b>	For Pickup Bed Delete or Chassis Cab <b>WITHOUT</b> Backup Camera Ready, Factory Supplied Camera and Harness, nor Factory Monitor in Dash or in Rearview Mirror.	<b>\$672</b>

<sup>1</sup> Aftermarket Camera Selected by Harbor Based On Capability of Meeting FMVSS Will Be Used.

<sup>2</sup> Aftermarket Camera and Monitor Selected by Harbor Based On Capability of Meeting FMVSS. Monitor Will Be Mounted Near Top Center of Dash.

## MECHANICS DRAWER PACKAGES

**FOR REGULAR & RAISED FRONT COMPARTMENTS:**

<b>S-MD-5PAK-15</b>	Mechanics Drawer Pack (5) Roll-Out Drawers Manufactured by Harbor. Four (4) 3" and One (1) 4" Drawers 12" Deep. 250 lb. Capacity. Removable Dividers. Built Specifically for the 1 <sup>st</sup> Compartment of <b>8-ft. &amp; 9-ft. SRW 40", 41", or with CRS15 High Bodies Only.</b> This Price Per Drawer of \$446 Compares to the Average Standard Price of \$500 Per Individual Drawer. Save \$270 MSRP by Purchasing 5 Drawer Pack. (Recommend Fix Shelf Option SSF34X15 Above Drawer Pack for CRS15 High Bodies)	<b>\$2,670</b>
<b>S-MD-5PAK-23.5</b>	Mechanics Drawer Pack (5) Roll-Out Drawers Manufactured by Harbor. Four (4) 3" and One (1) 4" Drawers 19" Deep. 250 lb. Capacity. Removable Dividers. Built Specifically for the 1 <sup>st</sup> Compartment of <b>8-ft., 9-ft., &amp; 11-ft. DRW 40", 41" or with CRS23 High Bodies Only.</b> This Price Per Drawer of \$446 Compares to the Average Standard Price of \$500 Per Individual Drawer. Save \$270 MSRP by Purchasing 5 Drawer Pack. (Recommend Fix Shelf Option SSF34X23 Above Drawer Pack for CRS23 High Bodies)	<b>\$2,645</b>
<b>S-MD-6PAK-23.5</b>	Mechanics Drawer Pack (6) Roll-Out Drawers Manufactured by Harbor. Two (2) 3", Two (2) 4" and Two (2) 5" Drawers. The 3" and 4" Drawers are 19" Deep, and The 5" Drawers are 16" Deep. All 250 lb. Capacity with Removable Dividers. Built Specifically for the 1 <sup>st</sup> Compartment of <b>8-ft., 9-ft., &amp; 11-ft. DRW 40", 41" or with CRS23 High Bodies Only.</b> This Price Per Drawer of \$446 Compares to the Average Standard Price of \$507 Per Individual Drawer. Save \$364 MSRP by Purchasing 6 Drawer Pack. (Recommend Fix Shelf Option SSF34X23 Above Drawer Pack for CRS23 High Bodies)	<b>\$2,971</b>
<b>S-MD-7PAK-23.5</b>	Mechanics Drawer Pack (7) Roll-Out Drawers Manufactured by Harbor. Four (4) 3", One (1) 4" and Two (2) 5" Drawers. The 3" and 4" Drawers are 19" Deep, and The 5" Drawers are 16" Deep. All 250 lb. Capacity with Removable Dividers. Built Specifically for the 1 <sup>st</sup> Compartment of <b>8-ft., 9-ft., &amp; 11-ft. DRW 40", 41" or with CRS23 High Bodies Only.</b> This Price Per Drawer of \$446 Compares to the Average Standard Price of \$506 Per Individual Drawer. Save \$418 MSRP by Purchasing 7 Drawer Pack. (Recommend Fix Shelf Option SSF34X23 Above Drawer Pack for CRS23 High Bodies)	<b>\$3,688</b>

**FOR RAISED FRONT COMPARTMENTS ONLY:**

<b>S-MD-9PAK-23.5</b>	Mechanics Drawer Pack (9) Roll-Out Drawers Manufactured by Harbor. Four (4) 3" and Five (5) 5" Drawers. The 3" and Top Two (2) 5" Drawers are 19" Deep, and The Bottom Three (3) 5" Drawers are 16" Deep. All 250 lb. Capacity with Removable Dividers. Built Specifically for the 1 <sup>st</sup> Compartment of <b>8-ft., 9-ft., &amp; 11-ft. DRW with CRS23 High Bodies Only.</b> This Price Per Drawer of \$446 Compares to the Average Standard Price of \$512 Per Individual Drawer. Save \$586 MSRP by Purchasing 9 Drawer Pack. (Recommend Fix Shelf Option SSF34X23 Above Drawer Pack for CRS23 High Bodies)	<b>\$4,470</b>
-----------------------	---	----------------

# **Harbor Truck & Van**

# **WARRANTY**

## **NEW BODY LIMITED WARRANTY**

### **WHAT IS COVERED?**

**All Harbor Service Bodies, Harbor Platform Bodies, and Harbor Van Interiors (collectively “product”) during the Warranty Period (described immediately below).**

Harbor Truck & Van (Harbor) warrants each product manufactured by Harbor to be free of defects in materials or workmanship for a period of three (3) years or 36,000 miles whichever comes first from the date the body is placed “in service”. Harbor warrants its factory applied primer and finish coatings and/or powder coat finish against material defects for a period of three (3) years or 36,000 miles whichever comes first from the date the body is placed “in service”. During this three (3) year 36,000 miles warranty period, Harbor guarantees its products to be free of rust-through perforation. The warranty applies when the product is properly installed by Harbor or one of its Service Centers or Distributors and is properly maintained.

The “in service” date shall begin on the earliest of the following dates: the date of purchase by the first owner/user or; one year from the date the product was manufactured by Harbor or; the date it was first used as a demonstrator vehicle. This warranty is subject to limitations and exclusions as listed in the sections below.

### **WARRANTY CLAIMS PROCEDURE**

The owner shall immediately contact Harbor Customer Service (800-433-9452 Ext. 270 or customerservice@harbortruck.com) and provide a detailed description in writing with pictures showing and/or demonstrating the purported defect. The information must include the body serial number found on a plaque on the upper interior of the first driver (street) side compartment on the body or on the front rail of the platform body on the driver (street) side.

Harbor shall repair or replace, at its option, any factory manufactured and installed part that is deemed defective under normal use and when the product has been properly maintained in accordance with this warranty and Harbor’s OWNER’S MANUAL. The warranty repairs shall be performed free of charge for parts or labor. To assure warranty repairs meet the highest standards, Harbor reserves the right to perform all warranty repairs in-house or at one of Harbor’s authorized Distributors or Service Centers. Any warranty claim, for which repair is performed by truck dealers, customers or other third parties without Harbor’s express written permission in advance, shall be subject to rejection and the warranty voided. It is Harbor’s sole determination whether the product is defective in material or workmanship as claimed.

### **WARRANTY EXCLUSIONS**

1. Parts, that upon inspection, are found by Harbor not to contain factory defects in material and workmanship
2. Warranty claim on any product where the vehicle is not the original vehicle on which the product is installed. Warranty claim on a vehicle damaged to such an extent that the owner or the institution financing, leasing or insuring the vehicle consider it uneconomical to repair it. This includes, but is not limited to a product titled as scrap, salvage or dismantled. Warranty claim to a product where the vehicle has been altered so the true mileage cannot be determined and where the mileage is a condition of the warranty.
3. Warranty claim for any part or accessory manufactured by Harbor Body that has been subjected to abuse, misuse, exposure to caustic acids or corrosive materials, fire, negligence, accident damage, collision or theft. Warranty claim for repair the need for which was caused by tampering, disconnection, improper adjustment, repair, or improper maintenance in accordance with the owner’s manual.
4. Warranty claim for fatigue or cracking of body structure due to abnormal stress caused by improper mounting, overloading, severe off-road applications, or twisting loads by a crane where the load exceeds crane/body capacity.
5. Any part or accessory that has been repaired by an unauthorized party without Harbor’s written permission where such repair is deemed by Harbor to have adversely affected the performance, reliability or stability of the part. Failures as a result of improper installation or adaptation of the body, van interior or special equipment by an unauthorized party.



# **Harbor Truck & Van**

## **WARRANTY**

6. *Parts or repairs for outside-manufactured accessories (e.g. cranes, lift gates, generators, compressors, pumps, welding machines, hydraulic pumps or reservoirs etc.) that are not manufactured by Harbor where these products are covered by their own manufacturers' warranties in effect at the time of delivery. A copy of an outside-manufactured accessory warranty, if provided to Harbor, has been included in your owners' packet. These are also generally available on line. Parts or repairs that are considered part of normal wear and tear to these outside-manufactured accessories by their manufacturers. Labor for removal or replacement of defective parts or accessories not installed by Harbor.*
7. *Repairs for corrosion perforation (defined as penetration of rust creating a hole through the metal) due to poor care, exposure to caustic acids or corrosive materials, exposure to improper cleaning materials, external forces (such as stones, salt or equivalent, gravel, accidents, collisions or other forms of impact), or due to environmental conditions including "acts of nature", industrial fall-out, acid rain or location on an island surrounded by saltwater in a non-contiguous 48 state location like the Hawaiian Islands. Poor care is defined as external rust left unrepaired and later causing corrosion perforation due to neglect of vehicle care. Repair for corrosion perforation due to installation (or de-installation) of accessories by user, unauthorized party or Harbor Distributor/Service Center. In the latter case, the Distributor or Service Center would be responsible for the repair if the product is still in the eligible Warranty Period. Repairs for corrosion other than perforation are not covered.*
8. *Repairs of paint flaws caused by conditions such as industrial fallout, acid rain, "acts of nature", exposure to caustic acids or corrosive materials, exposure to improper cleaning materials, scratches, abrasions, dents, nicks, chips, failures on flexible components, failure of under coating, calking, and cracking of joints subject to tensional bending or movement. Normal paint aging conditions.*
9. *Damage or failure of wood floor on a platform body or other upfit including, but not limited to damage from moisture, weather or use of corrosive or caustic materials resulting in buckling, deterioration or damage to such wood which, in Harbor's opinion, is considered normal wear and tear. Harbor replacement costs for wood floors that are determined to be defective shall be limited to the following percentages: 100% first year; 25% second year; 10% third year.*
10. *Harbor shall not be liable for incidental damages including, but not limited to: rental reimbursement, loss of use, storage, inconvenience, lost time or lost pay, food and lodging, and telephone calls.*
11. *Conditions related to noise, vibration or harshness of ride that are considered normal.*
12. *Products purchased outside the continental U.S. and Canada.*

### **DISCLAIMERS**

*This warranty is the only express warranty made by Harbor, and Harbor's obligations are limited to those expressed in this warranty. Harbor makes no other warranties, express or implied, and disclaims all other warranties, including any implied warranty of merchantability or fitness for particular purpose.*

*Harbor shall not be liable to the purchaser, or any third party, for any direct or indirect, incidental or consequential damage or loss even if the potential for such damage or loss was disclosed in advance. Some states do not allow the exclusion or limitation of incidental or consequential damages, or how long an implied warranty lasts in which case these limitations may not apply. These rights may vary from state to state.*

*If the product is improperly installed, modified, misused, damaged or otherwise tampered with, the Harbor Warranty shall become null and void and shall lapse.*

*In no event shall any liability arising from the product exceed the amount of the proceeds received by Harbor pursuant to its sale.*

*Harbor reserves the right to make changes to its products at any time without incurring any obligation to make the same or similar changes on products previously built by Harbor.*

*No person is authorized to modify or add to the Harbor Warranty.*

*This Warranty shall be enforced and construed in accordance with the laws of the State of California.*