

TradeMaster for Transit

Harbor 10.4ft. TradeMaster on Transit T350-HD w/Optional "HeadAche" Rack



Harbor 10.4-Ft. TradeMaster Interior Compartmentation



TradeMaster for Transit

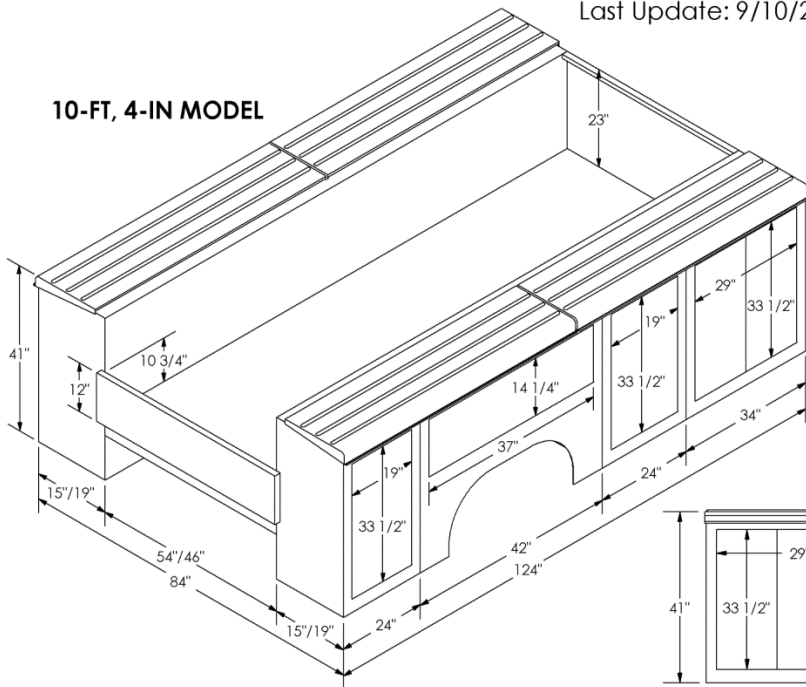
Harbor 10.4-ft. TradeMaster on Transit T350-HD w/ Optional "HeadAche" Rack



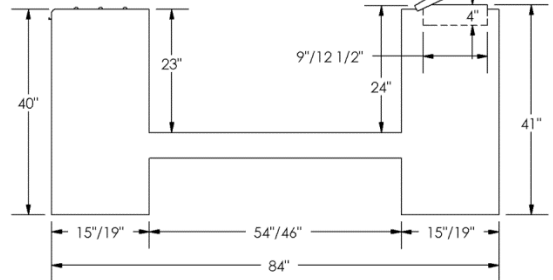
FORD TRANSIT TRADEMASTER DIMENSIONS

Last Update: 9/10/2018

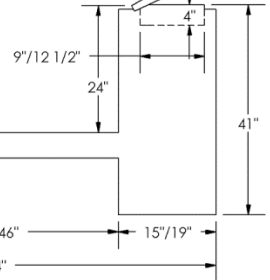
10-FT, 4-IN MODEL



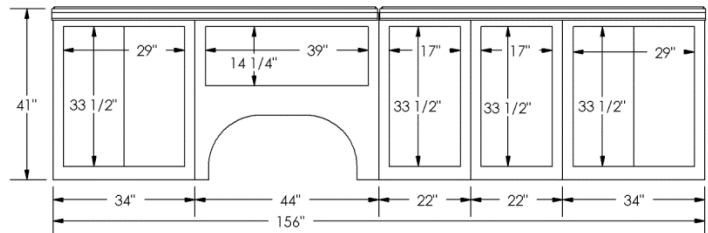
CLOSED-TOP MODEL



OPEN-TOP MODEL



13-FT MODEL



NOTE:

- 1) DOOR COMPARTMENT DIMENSIONS ARE THE CLEAR DOOR OPENING.
- 2) VERTICAL DIMENSIONS ARE STANDARD HEIGHT BODIES.
- 3) DIMENSIONS WITH FORWARD SLASH ARE SRW / DRW.

TradeMaster for Transit

T-250 & T-350HD CHASSIS CAB

10.4-ft. & 13-ft. Harbor TradeMaster			Ford Transit					
MODEL	LENGTH	COMPT DEPTH	MODEL	AXLE	WHEEL BASE	MIN. GVWR ¹	MSRP	
HT124-1541A	124"	15"	T250 – CC	SRW	138"	9,000 lb.	\$12,475	
HT124-1941A	124"	19"	T350HD – CC	DRW	138"	9,950 lb.	\$12,675	
HT156-1941A	156"	19"	T350HD – CC	DRW	156"	10,360 lb.	\$16,273	
STANDARD EQUIPMENT						124"	124"	156"
PART NUMBER	DESCRIPTION					SRW	DRW	DRW
Y(11/14)AWHITE	Harbor White Painted on Exterior only					INC	INC	INC
Z11-TRANS-RC	Mounted w/Lights and Standard 12" Bumper					INC	INC	INC
PS01	PS01 15" Stainless Steel Gravel Guards					INC	N/A	N/A
PS02	PS02 19" Stainless Steel Gravel Guards					N/A	INC	INC
OPTIONAL EQUIPMENT						124"	156"	
LOK-AOK-FORD (x8) / (x10)	Harbor ALL-ONE-KEY (A-O-K) Door Locks Keyed at Our Factory to Match the Vehicle Ignition Key for 10.5-ft. & 12-ft. TradeMaster Bodies. This Does not Apply to D33 or D39 MasterLock Which Requires a Standard, Non-Push Button Lock & Key.						\$270	\$315
MBL11/MBL14 ³	Bed Liner for 10.4 ft. TradeMaster Applied to Deck, Bulkhead, and Side Walls Below Interior Shelves.						\$1,195	\$1,539
PAINT AND MOUNT								
Y(11 / 14)RED ²	Single Stage Non Clear Coat Red Exterior						\$2,224	\$2,831
Y(11 / 14)BLACK ²	Single Stage Non Clear Coat Black Exterior						\$3,559	\$4,530
Y(11 / 14) METALLIC ²	Multiple Stage Clear Coat Metallic Color						-	-
RACKS & RACK ACCESSORIES								
(All Racks Have Swing-Away Rear Bar, 4 Rope Hooks & Removable Center Bars on Bed)								
RKTFL124-1941	"Side Loader Rack"—Tapered-Leg Rack w/ 4" Drop-Down Longitudinal Bars.							\$2,140
RKTFL156-1941	"Side Loader Rack"—Tapered-Leg Rack w/ 4" Drop-Down Longitudinal Bars.							\$2,190
RK35	Conduit Box With Rear Door (123"L x 6"H x 9.5"W)							\$777
RK50	Two (2) Conduit Pockets							\$684
RK60	Expanded Metal Roof Shield							\$716
RK61	14 GA. Galvanized Steel Roof Shield Punched on Turret Press							\$572
RK65	Front Stop for Rack							\$274
RK90	Stainless Covers for Cross Bars on Racks (Price per Cross Bar)							\$199
MSTRAPS	Two (2) Rack Straps – Ratchets up to 500 lbs. Tension (Recommended with Conduit Pockets to Firmly Secure Materials or Ladders)							\$375
¹ Ford Requires Strict Adherence to Weight Limits on the New Transit. Harbor Engineers Developed these Limits Based on Ford Data. ² Perfect Color Match with Cab NOT Guaranteed ³ Must be Ordered at Time of Manufacture. If Ordered After Body Manufactured or Delivered, There Will be a Retro Charge								

TradeMaster for Transit

SAFETY & SECURITY OPTIONS		MSRP
D33-HANDLE	Master Lock with Rear Handle (Internal Stainless Steel Security Bars Lock All Doors). Has Separate Lock and Key from Push-Button or A-O-K Lock. If Ordered With Harbor Standard Style Lock, All Keys Match. (FOR HT124)	\$1,342
D39-HANDLE	Master Lock with Rear Handle (Internal Stainless Steel Security Bars Lock All Doors). Has Separate Lock and Key from Push-Button or A-O-K Lock. If Ordered With Harbor Standard Style Lock, All Keys Match. (FOR HT156)	\$1,395
CBE124-3¹	3-Piece Cargo Bed Enclosure with Flip-Up End Gate (for HT124)	\$1,848
CBE156-3¹	3-Piece Cargo Bed Enclosure with Flip-Up End Gate (for HT156)	\$2,096
CBR124-3¹	Raised Cargo Bed Encl. w/ 3-Piece Sliding Roof & Rear Barn Doors (for HT124)	\$3,325
CBR156-3¹	Raised Cargo Bed Encl. w/ 3-Piece Sliding Roof & Rear Barn Doors (for HT156)	\$3,481
MLSBRB-LED	Rotating LED Strobe on Mounting Pad i.e. Mounts on Rack or Headboard Only, Not Roof. Lighted Cab Switch Included. ECCO 7965 LED Light, or Equivalent.	\$649
MLSBRB-LED-POLE	Rotating LED Strobe with Mounting Pad on Separate Pedestal Pole. Lighted Cab Switch Included. ECCO 7965 Light, or Equivalent.	\$747
MLTBAR-C	Light Bar Mounted on Separate Rack Behind Cab. Wired Through Back Bottom of Cab, Not Through Headliner. Whelen TAC F85LH, or Equivalent.	\$2,573
MCBC03	Chock Block Holder in Wheel Well. Recommended on Curbside as Safest Location.	\$842
MALARM	Back-up Alarm (Preco 380P or Equivalent)	\$376
ADDITIONAL TRADEMASTER OPTIONS		
C06	Delete Front Compartment. Extend Floor to Exterior Edge of Body. Add Under-Deck Compartment Below Floor Reinforced to Add Equipment up to 750 lb.	\$1,363
C25	Louver the Inner and Outer Skins of a Single Door for Ventilation	\$116
C34	Transverse Compartment In #1 Compartment.-Single Side Access (Choose Street Side or Curb Side)	\$711
C40	Transverse Compartment In #1 Compartment.-Dual Side Access	\$1,033
C41	One (1) 250 lb. Roll-Out Tray on (12) Heavy-Duty Bearings for Transverse Compartment (For C34 Single Side Access or C40 Dual Side Access)	\$1,728
MACTIRE	Spare Tire Carrier Mount Behind Bulkhead Only. (Not attached to Compartments Due to Potential Water Leaks in Compartment and Inadequate Load Bearing Capability of Compartment Wall)	\$296
METRK10²	E Track, One Row Mount Along Each Side of Bed Area. Must Specify Location Height in Bed Area (for 10.4-ft. bodies only)	\$708
METRK12²	E Track, One Row Mount Along Each Side of Bed Area. Must Specify Location Height in Bed Area (for 13-ft. bodies only)	\$970
MGFI	Additional GFI Outlet to be Wired to Inverter (Requires MINVTR)	\$322
MINVTR	Inverter w/ 115 Volt Outlet on - Wagan Inverter 3000 Watts Continuous True Weighted Power (6,000 Watts Peak Surge Power 115 Volts). Standard Mount Horizontal on Driver's Side Compartment.	\$1,906
MMUD2430	Mud Flaps w/ Harbor Logo for Trade Master Bodies. 24x30 but Cut Down to Fit Wheel Area.	\$136
MPIPE	Heavy Duty Pipe Holder (Front End Panel Only When Used in Conjunction w/Vise Bracket)	\$221
MVISE	Heavy Duty Stainless Steel Vise Bracket on Rear End Panel, 12"x7" (not for SRW bodies with lift gate or barn doors).	\$359
MVISE-10	Heavy Duty Stainless Steel Vise Bracket on Rear End Panel, 10"x7".	\$359
MWCB5GAL	5 Gallon Water Cask Platform and Bracket Mounted on Rear End Panel.	\$611
TG19	19' Tailgate In Lieu of Standard Height 12" Tailgate. For Use on Standard Width Floors Only.	\$186
TGA10GA	Tailgate, Standard Size Reinforced w/Smooth 10 GA. Inner Panel. (Applies to Standard Size Tailgates Only)	\$215
<p>¹ Remember to add one (1) additional LOK-AOK (make quantity 7) if adding AOK locks to body</p> <p>² Must be Ordered at Time of Manufacture. If Ordered After Body Manufactured or Delivered, There will be a Retro Charge</p>		

TradeMaster for Transit

MECHANICS DRAWER PACKAGES		
FOR REGULAR & RAISED FRONT COMPARTMENTS:		
S-MD-5PAK-15	Mechanics Drawer Pack (5) Roll-Out Drawers Manufactured by Harbor. Four (4) 3" and One (1) 4" Drawers 12" Deep. 250 lb. Capacity. Removable Dividers. Built Specifically for the 1 st Compartment of 10.4-ft. & 13-ft. SRW 40", 41", or with CRS15 High Bodies Only . This Price Per Drawer of \$446 Compares to the Average Standard Price of \$500 Per Individual Drawer. Save \$270 MSRP by Purchasing 5 Drawer Pack. (Recommend Fix Shelf Option SSF34X15 Above Drawer Pack for CRS15 High Bodies)	\$2,341
S-MD-5PAK-19	Mechanics Drawer Pack (5) Roll-Out Drawers Manufactured by Harbor. Four (4) 3" and One (1) 4" Drawers 16" Deep. 250 lb. Capacity. Removable Dividers. Built Specifically for the 1 st Compartment of 10.4-ft. & 13-ft. DRW 40", 41", or with CRS19 High Bodies Only . This Price Per Drawer of \$446 Compares to the Average Standard Price of \$500 Per Individual Drawer. Save \$270 MSRP by Purchasing 5 Drawer Pack. (Recommend Fix Shelf Option SSF34X19 Above Drawer Pack for CRS15 High Bodies)	\$2,341
COMPARTMENT OPTIONS		MSRP
CRB15	Single Raised Front Compartment w/ Bottle Brackets & Rings (Specify Side of Body). Compartment Height is 63" Maximum Bottle Size: Oxygen 55" HT x 9-1/2" Diameter. Acetylene 36-3/4" HT x 8-1/4" Diameter Includes Louvered Panel for Ventilation. For SRW Bodies Only	\$2,048
CRB19	Single Raised Front Compartment w/ Bottle Brackets & Rings (Specify Side of Body). Compartment Height is 63" Maximum Bottle Size: Oxygen 55" HT x 9-1/2" Diameter. Acetylene 36-3/4" HT x 8-1/4" Diameter Includes Louvered Panel for Ventilation. For DRW Bodies Only	\$2,433
CRS15	Single Raised Front Compartment w/ (2) Adjustable Shelves. (Specify Side) – SRW Bodies Only	\$1,377
CRS19	Single Raised Front Compartment w/ (2) Adjustable Shelves. (Specify Side) – DRW Bodies Only	\$1,727
SSF34X(15/19)	FIXED SHELF for Front Compartment 34" wide.	\$311 EA
BACKUP CAMERAS		
10,000 LB GVWR AND UNDER (MUST CHOOSE ONE)		
10,001 LB GVWR AND OVER (OPTIONAL)		
BACKUP CAMERAS ARE REQUIRE BY FMVSS 111 ON ALL TRUCKS 10,000 GVWR OR UNDER MANUFACTURED 5-1-2018 OR LATER		
MBCK-UP-CAM-LB1	For TradeMaster Upfit Onto Transit Chassis Cab WITH Backup Camera Ready, and Factory supplied Camera and Harness.	\$168
MBCK-UP¹	For TradeMaster Upfit Onto Transit Chassis Cab WITHOUT Backup Camera Ready, and Factory supplied Camera and Harness.	\$656
¹ Aftermarket Camera and Monitor Selected by Harbor Based On Capability of Meeting FMVSS. Monitor Will Be Mounted Near Top Center of Dash.		

Harbor Truck & Van

WARRANTY

NEW BODY LIMITED WARRANTY

WHAT IS COVERED?

All Harbor Service Bodies, Harbor Platform Bodies, and Harbor Van Interiors (collectively “product”) during the Warranty Period (described immediately below).

Harbor Truck & Van (Harbor) warrants each product manufactured by Harbor to be free of defects in materials or workmanship for a period of three (3) years or 36,000 miles whichever comes first from the date the body is placed “in service”. Harbor warrants its factory applied primer and finish coatings and/or powder coat finish against material defects for a period of three (3) years or 36,000 miles whichever comes first from the date the body is placed “in service”. During this three (3) year 36,000 miles warranty period, Harbor guarantees its products to be free of rust-through perforation. The warranty applies when the product is properly installed by Harbor or one of its Service Centers or Distributors and is properly maintained.

The “in service” date shall begin on the earliest of the following dates: the date of purchase by the first owner/user or; one year from the date the product was manufactured by Harbor or; the date it was first used as a demonstrator vehicle. This warranty is subject to limitations and exclusions as listed in the sections below.

WARRANTY CLAIMS PROCEDURE

The owner shall immediately contact Harbor Customer Service (800-433-9452 Ext. 270 or customerservice@harbortruck.com) and provide a detailed description in writing with pictures showing and/or demonstrating the purported defect. The information must include the body serial number found on a plaque on the upper interior of the first driver (street) side compartment on the body or on the front rail of the platform body on the driver (street) side.

Harbor shall repair or replace, at its option, any factory manufactured and installed part that is deemed defective under normal use and when the product has been properly maintained in accordance with this warranty and Harbor’s OWNER’S MANUAL. The warranty repairs shall be performed free of charge for parts or labor. To assure warranty repairs meet the highest standards, Harbor reserves the right to perform all warranty repairs in-house or at one of Harbor’s authorized Distributors or Service Centers. Any warranty claim, for which repair is performed by truck dealers, customers or other third parties without Harbor’s express written permission in advance, shall be subject to rejection and the warranty voided. It is Harbor’s sole determination whether the product is defective in material or workmanship as claimed.

WARRANTY EXCLUSIONS

1. Parts, that upon inspection, are found by Harbor not to contain factory defects in material and workmanship
2. Warranty claim on any product where the vehicle is not the original vehicle on which the product is installed. Warranty claim on a vehicle damaged to such an extent that the owner or the institution financing, leasing or insuring the vehicle consider it uneconomical to repair it. This includes, but is not limited to a product titled as scrap, salvage or dismantled. Warranty claim to a product where the vehicle has been altered so the true mileage cannot be determined and where the mileage is a condition of the warranty.
3. Warranty claim for any part or accessory manufactured by Harbor Body that has been subjected to abuse, misuse, exposure to caustic acids or corrosive materials, fire, negligence, accident damage, collision or theft. Warranty claim for repair the need for which was caused by tampering, disconnection, improper adjustment, repair, or improper maintenance in accordance with the owner’s manual.
4. Warranty claim for fatigue or cracking of body structure due to abnormal stress caused by improper mounting, overloading, severe off-road applications, or twisting loads by a crane where the load exceeds crane/body capacity.
5. Any part or accessory that has been repaired by an unauthorized party without Harbor’s written permission where such repair is deemed by Harbor to have adversely affected the performance, reliability or stability of the part. Failures as a result of improper installation or adaptation of the body, van interior or special equipment by an unauthorized party.

Harbor Truck & Van

WARRANTY

6. *Parts or repairs for outside-manufactured accessories (e.g. cranes, lift gates, generators, compressors, pumps, welding machines, hydraulic pumps or reservoirs etc.) that are not manufactured by Harbor where these products are covered by their own manufacturers' warranties in effect at the time of delivery. A copy of an outside-manufactured accessory warranty, if provided to Harbor, has been included in your owners' packet. These are also generally available on line. Parts or repairs that are considered part of normal wear and tear to these outside-manufactured accessories by their manufacturers. Labor for removal or replacement of defectives parts or accessories not installed by Harbor.*
7. *Repairs for corrosion perforation (defined as penetration of rust creating a hole through the metal) due to poor care, exposure to caustic acids or corrosive materials, exposure to improper cleaning materials, external forces (such as stones, salt or equivalent, gravel, accidents, collisions or other forms of impact), or due to environmental conditions including "acts of nature", industrial fall-out, acid rain or location on an island surrounded by saltwater in a non-contiguous 48 state location like the Hawaiian Islands. Poor care is defined as external rust left unrepaired and later causing corrosion perforation due to neglect of vehicle care. Repair for corrosion perforation due to installation (or de-installation) of accessories by user, unauthorized party or Harbor Distributor/Service Center. In the latter case, the Distributor or Service Center would be responsible for the repair if the product is still in the eligible Warranty Period. Repairs for corrosion other than perforation are not covered.*
8. *Repairs of paint flaws caused by conditions such as industrial fallout, acid rain, "acts of nature", exposure to caustic acids or corrosive materials, exposure to improper cleaning materials, scratches, abrasions, dents, nicks, chips, failures on flexible components, failure of under coating, calking, and cracking of joints subject to tensional bending or movement. Normal paint aging conditions.*
9. *Damage or failure of wood floor on a platform body or other upfit including, but not limited to damage from moisture, weather or use of corrosive or caustic materials resulting in buckling, deterioration or damage to such wood which, in Harbor's opinion, is considered normal wear and tear. Harbor replacement costs for wood floors that are determined to be defective shall be limited to the following percentages: 100% first year; 25% second year; 10% third year.*
10. *Harbor shall not be liable for incidental damages including, but not limited to: rental reimbursement, loss of use, storage, inconvenience, lost time or lost pay, food and lodging, and telephone calls.*
11. *Conditions related to noise, vibration or harshness of ride that are considered normal.*
12. *Products purchased outside the continental U.S. and Canada.*

DISCLAIMERS

This warranty is the only express warranty made by Harbor, and Harbor's obligations are limited to those expressed in this warranty. Harbor makes no other warranties, express or implied, and disclaims all other warranties, including any implied warranty of merchantability or fitness for particular purpose.

Harbor shall not be liable to the purchaser, or any third party, for any direct or indirect, incidental or consequential damage or loss even if the potential for such damage or loss was disclosed in advance. Some states do not allow the exclusion or limitation of incidental or consequential damages, or how long an implied warranty lasts in which case these limitations may not apply. These rights may vary from state to state.

If the product is improperly installed, modified, misused, damaged or otherwise tampered with, the Harbor Warranty shall become null and void and shall lapse.

In no event shall any liability arising from the product exceed the amount of the proceeds received by Harbor pursuant to its sale.

Harbor reserves the right to make changes to its products at any time without incurring any obligation to make the same or similar changes on products previously built by Harbor.

No person is authorized to modify or add to the Harbor Warranty.

This Warranty shall be enforced and construed in accordance with the laws of the State of California.