

P.O.T. DIRECTIONAL SIGN SCHEDULE			
SIGN # AND KEYNOTE	DETAIL	DESCRIPTION	LOCATION
1	8B A105	DIRECTIONAL SIGN TO ENTRANCE ARROW P.O.T. #A SIGN TO READ: TO ACCESSIBLE ENTRANCE	ON THE NEW CMU WALL ADJACENT TO THE EXISTING ACCESSIBLE PARKING SPACES AT THE NORTH END OF THE PARKING LOT.
2	8A A105	DIRECTIONAL SIGN TO ENTRANCE ARROW P.O.T. #L SIGN TO READ: TO ACCESSIBLE ENTRANCE	AT THE INSIDE OF NEW PEDESTRIAN GATE 100' FROM THE PARKING LOT TO THE SIDEWALK ALONG 111TH ST.
3	8A A105	DIRECTIONAL SIGN TO RESTROOM ARROW P.O.T. #L SIGN TO READ: TO ACCESSIBLE RESTROOM	AT ROOM ATRIUM 120' ON THE EXISTING WALL LEADING TO VESTIBULE 9; SEE SHEET A21 FOR LOCATION.

**RENOVATION NOTES**

- 1 ACCESSIBLE ROUTE, SEE "ACCESSIBLE ROUTE NOTES" ON A101.
- 2 (E) TOW-AWAY PARKING SIGN.
- 3 (E) DETECTABLE WARNING SURFACE, IN COMPLIANCE W/ 2019 CBC 11B-705.
- 4 (E) ACCESSIBLE PARKING SPACE AND ACCESS AISLE, IN COMPLIANCE WITH 2019 CBC.
- 5 (N) DIRECTIONAL SIGN, SEE SIGN SCHEDULE AND DETAIL.

**EXISTING PARKING TABULATION**

STANDARD STALLS:	81
STANDARD ACCESSIBLE STALLS:	2
VAN ACCESSIBLE STALLS:	1
<b>TOTAL NUMBER OF STALLS:</b>	<b>84</b>
REQUIRED ACCESSIBLE PARKING PER CBC TABLE 11B-6:	2
VAN ACCESSIBLE:	1

P.O.T. DIRECTIONAL SIGN SCHEDULE

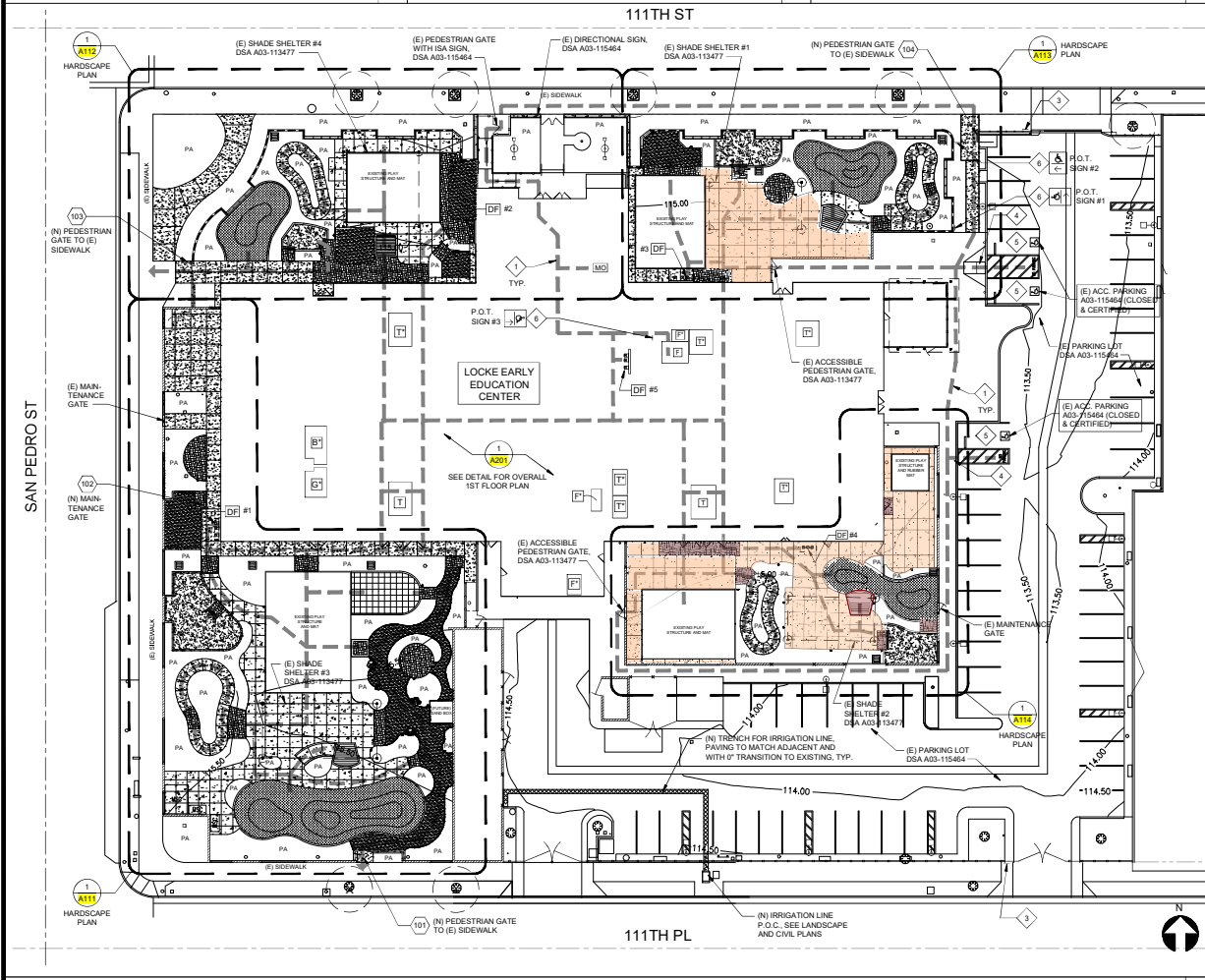
12

KEY NOTES

9

(E) PARKING CALCULATION

6



SITE PLAN

SCALE: 1"=20'-0"

4

LOS ANGELES DWP - COUNTY FLOODWAY MAP

SCALE: NTS

3

LEGEND:

- PATH-OF-TRAVEL
- (N) HILO DRINKING FOUNTAIN FOR ADULT USE AND (N) SINGLE DRINKING FOUNTAIN FOR PRIMARY AGE GROUP:
  - DF #1
  - DF #2
  - DF #3
- (N) ACCESSIBLE UNSEX FACULTY RESTROOM: A201
- (E) OR (N) NON-ACCESSIBLE FACULTY RESTROOM: F
- (N) NON-ACCESSIBLE BOY'S RESTROOM: B
- (E) NON-ACCESSIBLE GIRL'S RESTROOM: G
- (N) NON-ACCESSIBLE UNSEX KINDERGARTEN RESTROOM: T
- (E) ACCESSIBLE UNSEX KINDERGARTEN RESTROOM: T
- (E) MAN OFFICE WITH (N) ACCESSIBLE CHECK-IN DESK: MCO
- 101 TO 104 SYMBOLS FOR (N) GATES. SEE GATE SCHEDULE: A101

LANDSCAPE / HARDSCAPE LEGEND:

- CONCRETE PAVING
- PAVERS
- DECOMPOSED GRANITE
- PLANTING AREA
- TURF GRASS
- WOOD CHIPS
- 'PLAYMATTAS' PLAYGROUND SAFETY SURFACE
- EXISTING CMU WALL
- EXISTING CHAIN LINK FENCE
- NEW CMU WALL W/ PLASTER FINISH AND WALL CAP
- NEW STEEL FENCE AND CONCRETE CURB

SITE PLAN LEGEND

2

ACCESSIBLE ROUTE NOTES:

- ACCESSIBLE ROUTE AS INDICATED ON PLAN IS A BARRIER-FREE ACCESS ROUTE WITHOUT ANY AIRRUP LEVEL CHANGES EXCEEDING 1/2" IF BELIEVED AT 1/2" MAX SLOPE, OR VERTICAL LEVEL CHANGES NOT EXCEEDING 1/4" MAX, AND AT LEAST 48" IN WIDTH.
- SURFACE IS STABLE, FIRM AND SLIP RESISTANT.
- CROSS SLOPE DOES NOT EXCEED 2% AND SLOPE IN THE DIRECTION OF TRAVEL IS LESS THAN 5%, UNLESS OTHERWISE INDICATED.
- ACCESSIBLE ROUTE SHALL BE MAINTAINED FREE OF OVERHANGING OBSTRUCTIONS TO 80" MINIMUM, AND PROTRUDING OBJECTS GREATER THAN 4" PROJECTION FROM WALL AND ABOVE 27" AND LESS THAN 80".
- THE ARCHITECT SHALL VERIFY THAT THERE ARE NO BARRIERS IN THE ACCESSIBLE ROUTE.
- DESIGN PROFESSIONAL IN GENERAL RESPONSIBLE CHARGE STATEMENT: THE P.O.T. IDENTIFIED IN THESE CONSTRUCTION DOCUMENTS IS COMPLIANT WITH THE CURRENT APPLICABLE CALIFORNIA BUILDING CODE ACCESSIBILITY PROVISIONS FOR PATH-OF-TRAVEL REQUIREMENTS FOR ALTERATIONS, ADDITIONS, AND STRUCTURAL REPAIRS. AS PART OF THE DESIGN OF THIS PROJECT, THE P.O.T. WAS EXAMINED AND ANY ELEMENTS, COMPONENTS, OR PORTIONS OF THE P.O.T. THAT WERE DETERMINED TO BE NONCOMPLIANT 1) THAT WERE IDENTIFIED AND 2) THE CORRECTIVE WORK NECESSARY TO BRING THEM INTO COMPLIANCE HAS BEEN INCLUDED WITHIN THE SCOPE OF THIS PROJECT'S WORK THROUGH DETAILS, DRAWINGS, AND SPECIFICATIONS INCORPORATED INTO THESE CONSTRUCTION DOCUMENTS. ANY NONCOMPLIANT ELEMENTS, COMPONENTS, OR PORTIONS OF THE P.O.T. THAT WILL NOT BE CORRECTED BY THIS PROJECT BASED ON VALUATION THRESHOLD LIMITATIONS OR A FINDING OF UNREASONABLE HARDSHIP ARE SO INDICATED IN THESE CONSTRUCTION DOCUMENTS.
- ADA TOLERANCE NOTE: IN CASES WHERE SLOPE PERCENTAGES AND DIMENSIONS ARE IDENTIFIED ON THESE PLANS FOR ELEMENTS REGULATED BY THE AMERICAN DISABILITIES ACT AND CHAPTER 11B OF THE CALIFORNIA BUILDING CODE (CBC), THE SLOPE PERCENTAGES AND DIMENSIONS SHOWN MAY BE MORE STRINGENT THAN REQUIRED BY CODE. DIMENSIONS AND SLOPE GRADIENTS ALLOWED IN CHAPTER 11B OF THE CBC SHALL BE ACCEPTABLE AND DEEMED TO BE IN COMPLIANCE WITH THESE DOCUMENTS.

ACCESSIBLE ROUTE NOTES

1

DIVISION OF THE STATE ARCHITECT

IDENTIFICATION STAMP  
DIV. OF THE STATE ARCHITECT  
APP. 03-120560 INC.  
REVIEWED FOR  
SS FLD ACS  
DATE 05/06/2020



**LOS ANGELES UNIFIED SCHOOL DISTRICT**  
**M&O - A/E SERVICES**  
**FACILITIES SERVICES DIVISION**  
 333 S BEAUDRY AVE, 22nd FLOOR  
 LOS ANGELES, CA 90017  
 Tel: (213) 241-3952

PROJECT TITLE AND SCHOOL LOCATION  
**NATURE EXPLORE CLASSROOM PROGRAM**  
 at  
**Locke Early Education Center**  
 320 E 111th St,  
 Los Angeles, CA 90061

DSA APP. NO. FILE NO.  
 A#03-120560 19-63

ARCHITECT  
**BOA Government Services**  
 2909 Oregon Ct, Ste C6  
 Torrance, CA 90503  
 Tel (310) 783-5129

CONSULTANTS  
**Unipart Engineering, INC.**  
 550 E Carson Plaza Dr, Ste 116  
 Carson, CA 90746  
 Tel (310) 523-3993

**Nuvus Landscape Architecture**  
 3151 Airway Ave  
 Costa Mesa, CA 92626  
 Tel (714) 754-7311

**PBS Engineers**  
 2100 East Rte 66, Ste 101  
 Glendora, CA 91740  
 Tel (626) 650-0350

**Century Structural Engineering**  
 24719 Narbonne Ave  
 Lomita, CA 90717  
 Tel (310) 325-0883

STAMPS/SEALS

3/11/2020 DSA 1ST SUBMITTAL  
 4/29/2020 DSA BACKCHECK

SITE PLAN, ACCESSIBLE ROUTE NOTES, AND FLOODWAY MAP

PROJECT NO. 6037 PROJECT ARCH. -  
 DRAWN - CHECKED -  
 SHEET NUMBER

**A101**

DATE: 4/29/2020 SHEET: 01