



License No. 800025015  
FL License # CMTL-0003  
CLIA No. 10D1094068

# Certificate of Analysis

## Compliance Test

**CHOICE EXTRACTION INC**  
1 BAIRD AVE  
WASHINGTON, PA 15301

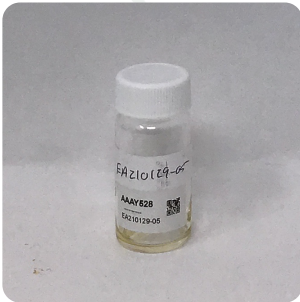
Batch # EA210129-05  
Batch Date: 2021-01-29  
Extracted From: HEMP

Test Reg State: Oregon

Order # CHO210129-050007  
Order Date: 2021-01-29  
Sample # AAAY528

Sampling Date: 2021-02-02  
Lab Batch Date: 2021-02-02  
Completion Date: 2021-02-05

Initial Gross Weight: 17.597 g



Product Image

Potency  
Tested

### Delta 8 Potency 11

Tested  
(LCUV)

Specimen Weight: 52.930 mg

Analyte	LOD (%)	LOQ (%)	Result (mg/g)	(%)
Delta-8 THC	0.000026	0.001	576.700	57.670
THCV	0.000007	0.001	2.183	0.218
CBN	0.000014	0.001	0.868	0.087
CBC	0.000018	0.001		<LOQ
CBD	0.000054	0.001		<LOQ
Delta-9 THC	0.000013	0.001		<LOQ
CBGA	0.00008	0.001		<LOQ
CBG	0.000248	0.001		<LOQ
CBDV	0.000065	0.001		<LOQ
CBDA	0.00001	0.001		<LOQ
THCA-A	0.000032	0.001		<LOQ

### Potency Summary

Total CBD None Detected	Total THC None Detected
Total CBG None Detected	Total CBN 0.087%
Other Cannabinoids 57.919%	Total Cannabinoids 58.006%

Xueli Gao  
Ph.D., DABT  
Lab Toxicologist

Aixia Sun  
D.H.Sc., M.Sc., B.Sc., MT (AAB)  
Lab Director/Principal Scientist



Definitions and Abbreviations used in this report: \*Total CBD = CBD + (CBD-A \* 0.877), \*Total THC = THCA-A \* 0.877 + Delta 9 THC, \*CBG Total = (CBGA \* 0.877) + CBG, \*CBN Total = (CBNA \* 0.877) + CBN, \*Other Cannabinoids Total = CBC + CBDV + THCV + THCV-A, \*Total Detected Cannabinoids = CBD Total + CBG Total + CBN Total + THC Total + CBC + CBDV + THCV + THCV-A, \*Analyte Details above show the Dry Weight Concentrations unless specified as 12% moisture concentration. (mg/ml) = Milligrams per Milliliter, LOQ = Limit of Quantitation, LOD = Limit of Detection, Dilution = Dilution Factor (ppb) = Parts per Billion, (%) = Percent, (cfu/g) = Colony Forming Unit per Gram (cfu/g) = Colony Forming Unit per Gram, LOD = Limit of Detection, (µg/g) = Microgram per Gram (ppm) = Parts per Million, (ppm) = (µg/g), (aw) = aw (area ratio) = Area Ratio, (mg/Kg) = Milligram per Kilogram, \*Measurement of Uncertainty = +/- 5%



This report shall not be reproduced, without written approval, from ACS Laboratory. The results of this report relate only to the material or product analyzed. Test results are confidential unless explicitly waived otherwise. Accredited by a third-party accrediting body as a competent testing laboratory pursuant to ISO/IEC 17025 of the International Organization for Standardization.