



# Certificate of Analysis

Compliance Test

**CHOICE EXTRACTION INC**  
1 BAIRD AVE  
WASHINGTON, PA 15301

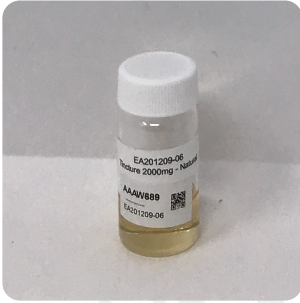
Batch # EA201209-06  
Batch Date: 2020-12-09  
Extracted From: Hemp

Test Reg State: Oregon

Order # CHO210106-130003  
Order Date: 2021-01-06  
Sample # AAAW689

Sampling Date: 2021-01-12  
Lab Batch Date: 2021-01-12  
Completion Date: 2021-01-15

Initial Gross Weight: 22.549 g



Product Image

Potency  
Tested



## Potency - 11

Specimen Weight: 86.620 mg

Analyte	Dilution (1:n)	LOD (%)	LOQ (%)	Result (mg/g)	(%)
CBD	10.000	0.000054	0.001	65.760	6.576
CBC	10.000	0.000018	0.001	5.475	0.548
Delta-9 THC	10.000	0.000013	0.001	2.444	0.244
CBG	10.000	0.000248	0.001	1.052	0.105
CBN	10.000	0.000014	0.001	<LOQ	<LOQ
Delta-8 THC	10.000	0.000026	0.001	<LOQ	<LOQ
CBGA	10.000	0.000008	0.001	<LOQ	<LOQ
THCV	10.000	0.000007	0.001	<LOQ	<LOQ
CBDV	10.000	0.000065	0.001	<LOQ	<LOQ
CBDA	10.000	0.000001	0.001	<LOQ	<LOQ
THCA-A	10.000	0.000032	0.001	<LOQ	<LOQ

**Tested**  
(HPLC/LCMS)



## Potency Summary

<b>Total CBD</b> 6.576%	<b>Total THC</b> 0.244%
<b>Total CBG</b> 0.105%	<b>Total CBN</b> None Detected
<b>Other Cannabinoids</b> 0.548%	<b>Total Cannabinoids</b> 7.473%

Xueli Gao      Lab Toxicologist      Aixia Sun      Lab Director/Principal Scientist  
Ph.D., DABT      D.H.Sc., M.Sc., B.Sc., MT (AAB)



Definitions and Abbreviations used in this report: \*Total CBD = CBD + (CBD-A \* 0.877), \*Total THC = THCA-A \* 0.877 + Delta 9 THC, \*CBG Total = (CBGA \* 0.877) + CBG, \*CBN Total = (CBNA \* 0.877) + CBN, \*Other Cannabinoids Total = CBC + CBDV + THC + THCV + THCV-A, \*Total Detected Cannabinoids = CBD Total + CBG Total + CBN Total + THC Total + CBC + CBDV + THC + THCV + THCV-A, \*Analyte Details above show the Dry Weight Concentrations unless specified as 12% moisture concentration. (mg/ml) = Milligrams per Milliliter, LOQ = Limit of Quantitation, LOD = Limit of Detection, Dilution = Dilution Factor (ppb) = Parts per Billion, (%) = Percent, (cfu/g) = Colony Forming Unit per Gram (cfu/g) = Colony Forming Unit per Gram, LOD = Limit of Detection, (µg/g) = Microgram per Gram (ppm) = Parts per Million, (ppm) = (µg/g), (aw) = aw (area ratio) = Area Ratio, (mg/Kg) = Milligram per Kilogram, \*Measurement of Uncertainty = +/- 5%

This report shall not be reproduced, without written approval, from ACS Laboratory. The results of this report relate only to the material or product analyzed. Test results are confidential unless explicitly waived otherwise. Accredited by a third-party accrediting body as a competent testing laboratory pursuant to ISO/IEC 17025 of the International Organization for Standardization.

