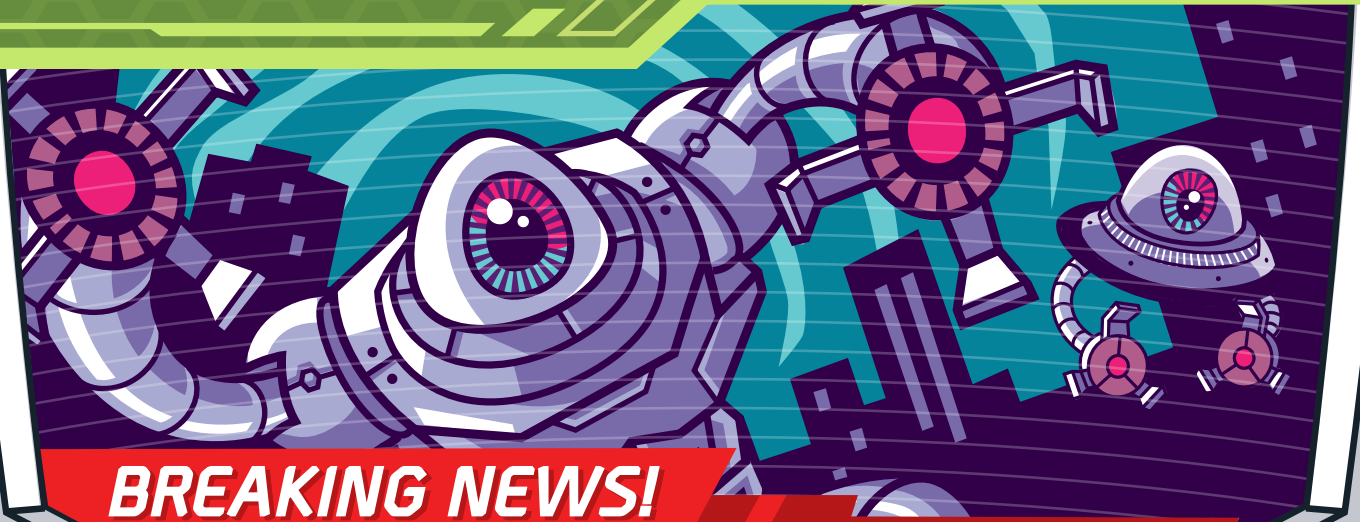


# EYE SQUAD

Help Iris and Lash defeat Professor Blur!



**BREAKING NEWS!**

1 IN 4 KIDS SUFFERS FROM POOR VISION

## HEY KIDS!

Learn how an eye exam is the key to defeat Professor Blur through **HIDDEN OBJECTS, MAZES, WORD SEARCHES AND MORE!**

## PARENTS:

Find out why school vision screenings aren't enough and how a **comprehensive eye exam makes all the difference.** Details inside.



## WELCOME TO EYE SQUAD HEADQUARTERS

Iris and Lash are excited you're here! These fun games will show you how important it is to get an eye exam. Why? Because once you do, Professor Blur doesn't stand a chance!

### FIND THE WORDS

The gadgets you'll see in an eye doctor's office are really cool. Learn about what they do in the list below, and then see if you can find them in the puzzle!

#### TONOMETER

Directs a small puff of air into your eye to check your eye pressure. Don't worry; it doesn't hurt.

#### RETINAL CAMERA

Takes a picture of the back of your eye to make sure it's healthy.

#### PHOROPTER

These crazy looking "goggles" have fancy knobs and wheels to help determine which lenses are right for you.

#### RETINOSCOPE

Shines light all the way back to your retina to help find out if you need glasses.

#### SLIT LAMP

This allows the eye doctor to see all the amazing parts inside your eye!

K Z J L V S Y V E R B A X Z J  
 Y G A H Q W R A B E F Y C V U  
 T S R H M G Z O H T P I D B S  
 L C E V L I N A T P T U X I Y  
 R T M P R E T I N O S C O P E  
 Y L A M P Q M H K R T Z Y J O  
 Z Q C A L I S Q D O J G L W M  
 U W L L I Q X A J H S P P G L  
 A D A T A R M R P P D S Y T Z  
 W Z N I Q W A M W W H A N G B  
 K C I L Y G B D R A E E P M W  
 J E T S N W A G K R D R P N H  
 N N E V S U R E T E M O N O T  
 E R R A D F Q D M N Q N V T Z  
 P Z A H J H N J Q H G A K N A

### SPOT THE DIFFERENCES

TRUE    TRUE OR FALSE?  
 FALSE    80% of what kids learn is through their eyesight.

ANSWER: True

Since school vision screenings only detect 20-30% of eye problems, an eye exam is super important to see your best. You'll need sharp vision to spot the differences in the lockers below.



ANSWERS: Apple to orange, Iris to Lash nameplate, news article headline, news article photos, flower to star, portrait photo to building photo, style of glasses, book spine designs, reversed colors on balls, scribbled note to smiley face

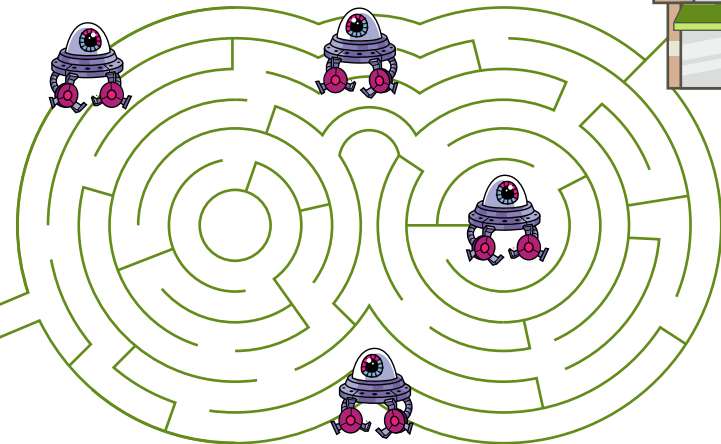
## A-MAZE-ING VISION

**DID YOU KNOW?** About 2.5 billion people see poorly and don't have corrected vision, yet 80% of those vision problems can be helped. Make sure to get your eyes checked!

You've finished your eye exam and received your Eye Squad Certificate from one of our eye care experts. Now it's time to visit your neighborhood Pearle Vision EyeCare Center to complete your uniform. But look sharp! Professor Blur's minions are out to stop you!



THE MAZE STARTS HERE



## HIDDEN OBJECTS

After an eye exam, you can use your healthy vision to enjoy doing the activities you love. See if you can find them all!

**BASEBALL • GUITAR • SCISSORS • BASKETBALL • HOCKEY STICK • BOOK • BALLET SLIPPER  
PAINT BRUSH • PIANO KEYS • PENCIL • FOOTBALL**



**Ready to join Iris and Lash? After your eye exam, pick up an official Eye Squad Certificate from a Pearle Vision eye care expert to become our newest recruit!**





## PARENTS: THIS JUST IN!

Did you know that school vision screenings don't detect all vision problems? Check out the information below to see why a **comprehensive eye exam** is so important.



**25%** OF STUDENTS  
IN GRADES K-6  
HAVE VISION PROBLEMS  
THAT ARE SERIOUS ENOUGH  
TO IMPEDE LEARNING



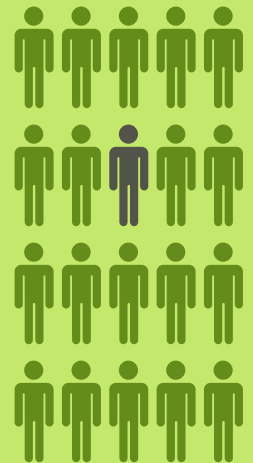
SCHOOL VISION SCREENINGS ONLY DETECT

**20-30%**  
OF VISION PROBLEMS



**50%**  
OF PARENTS  
ARE UNAWARE  
THEIR CHILD  
HAS FAILED A  
VISION SCREENING

**1 OUT OF 20  
CHILDREN**  
HAS A VISION PROBLEM  
THAT COULD RESULT IN  
**PERMANENT  
VISION  
LOSS**  
IF LEFT UNDIAGNOSED



Schedule your next eye exam with an eye care professional of choice. To learn more about eye exams or to find a Pearle Vision location, visit [pearlevision.com](http://pearlevision.com)\*

— EST. 1961 —  
**PEARLE VISION**

\*Eye exams available by Independent Doctors of Optometry located at or next to Pearle Vision in most states. Doctors in some states are employed by Pearle Vision. 3259-001E-KIDBR © 2017 Pearle Vision. All Rights Reserved.