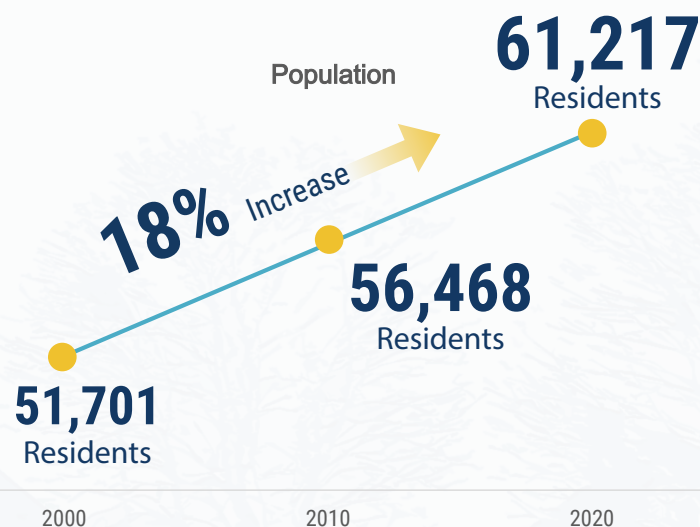


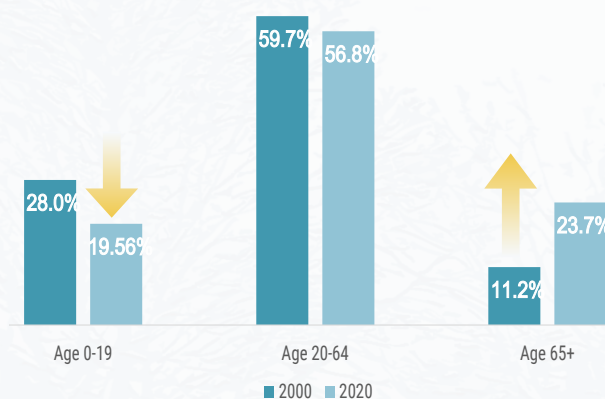


Our People and Households

Plymouth's population has grown steadily since 2000



The share of the population age 65+ more than doubled since 2000



» The population aged 65 and older could increase to more than one-third by 2040, while that of working age adults [20-64 years] could decline to less than half of the total population.

Average household size has decreased

Size



2.41 | 2020

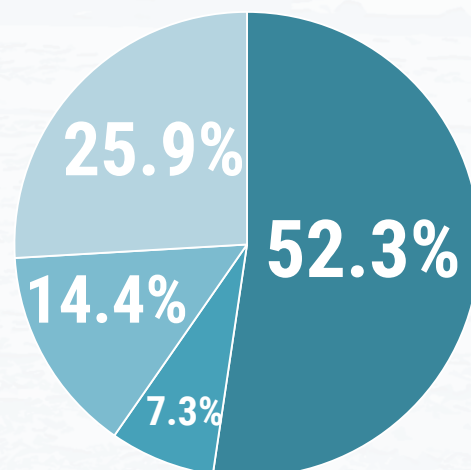
2.67 | 2000

68% Family Households

25% Households with children <18

38% Householders older than 65

Household types

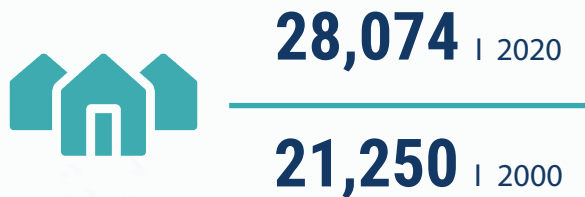


» Few households have children; More [one-fourth] householders are living alone.

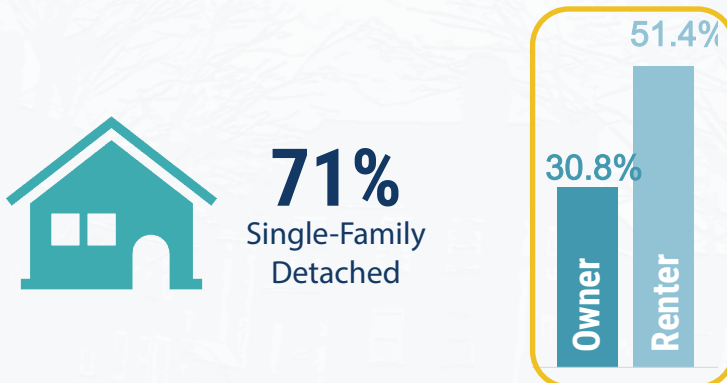
- Married Couple Households
- Cohabiting Couple Households
- Male Householder, No Spouse/Partner
- Female Householder, No Spouse/Partner

| Our Housing and Economics

Plymouth's housing stock and median household income has been growing



Half of renters and one-third of homeowners are cost-burdened



» Cost-burdened = paying more than 30% of household income on housing costs.

 % Owner-Occupied Cost Burdened Households
 % Renter-Occupied Cost Burdened Households

Businesses and jobs are increasing
but workforce availability and infrastructure limit potential growth



» Healthcare and social services, retail, and hospitality are top industries based on number of jobs.



Our Natural Resources & Sustainability

More than one-third of Plymouth is open space



37.3%

Open Space

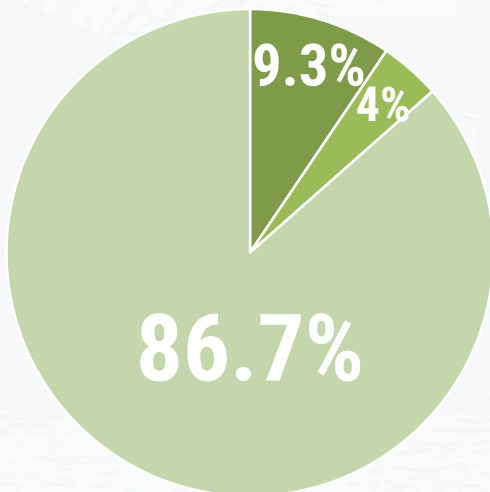
Impact on climate change



93%

of Plymouth's Greenhouse Gas [GHG] emissions come from buildings and transportation

Types of open space



- Not Protected Open Space
- Other Open Space
- Permanently Protected

Water and forest resources



Plymouth-Carver
Sole Source Aquifer



365+ Ponds

- 65 larger than 10 acres
- 19 Great Ponds



36 Miles
Coastline

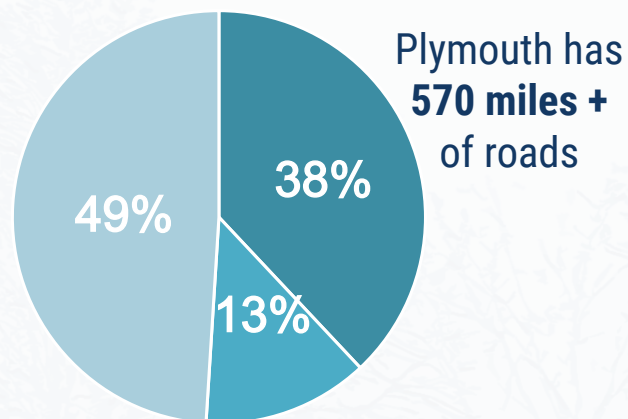
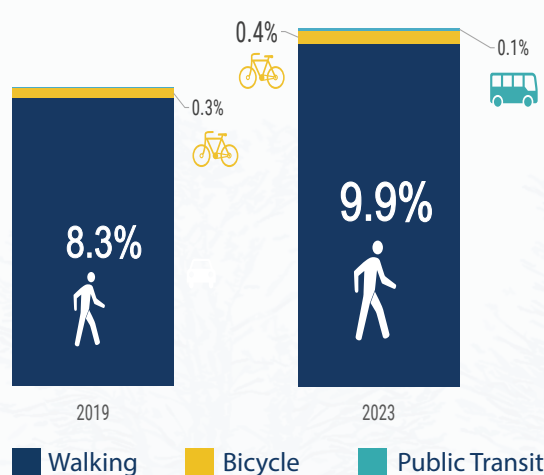
» 38% of people live within a 10-minute walk of a publicly-accessible park - lower than national average of 54%.



Over 10,000 acres
of Myles Standish State Forest are in Plymouth [a rare coastal pine barrens forest natural ecosystem]

| Our Transportation, Commute & Public Services

While Plymouth is largely auto-dependent due to its geographic size, there was an almost a 20% increase in walking trips between 2019 and 2023



Plymouth has
570 miles +
of roads

* Includes 18 miles of gravel and stone roads

Many residents commute out for work; fewer workers commute in for jobs

~ 16k
Commute
IN

~ 7.4k
Work & Live
in Plymouth

~ 23k
Commute
OUT

Public Services



Center for Active Living [CAL]

Large increase in active patrons in past decade



Police

9 patrol sectors respond to **~40,000 incidents** annually



Fire

7 fire stations respond to **~13,000 emergency calls** for service annually



Water

265 miles of water main serving **~44,000 residents**



Sewer

82 miles of sewer main serving **~14,000 customers**



Public Schools

Relatively steady **enrollment ~7,100** over past 3 years despite 10-year enrollment decline