

# Guitars and Bass Stuff

## What you need to know.

Our guitar pick-guards and other products are individually 3D printed in the U.S., exclusively for you. The following is provided to make your order process easier. Our product designs are embedded into the guard and are also designed around the pickup cutouts. They can be finished in clear gloss or clear matte finish.

1. We have templates for the most popular guitar and bass brands. Email us with the specific model, or you can send us your actual pick-guard (we will return it the day after we receive it) or you can send us a tracing. We will send you a proof before we print it.
2. Our pick-guards are the same height as OEM guitars. They are made to use the existing holes. Our products are available in 8 colors (gold, silver, black, white, blue, red, orange, green). However, we can print any PLA filament color, for a small charge.
3. There are 4 user choices: Base, Standard, Premium and Full Custom. Our Base pick-guards are a single color. The Standard pick-guard has 2 colors, 1 for the pick-guard and another color for the design. The Premium pick-guards use up to 4 colors. Custom is designed with your supplied design. In the enclosed design prints, each design has a 2/4 in the design description. This stands for 2 colors or 4 colors.

4. We also offer matching color head-stocks and control covers. A control cover can be used for even non pick-guard guitars. Or a pick-guard can be made when there was not an OEM pick-guard. Adhesive tape will be included for product without OEM screw holes.

Matching color knobs are also available. Additional matching non-guitar products such as light switch covers, sign boxes, key-chains and hanging wall guitar caddies, clocks are also available.

#### Pricing:

|                     |         |
|---------------------|---------|
| Base Pick-guard     | \$9.95  |
| Standard Pick-guard | \$19.95 |
| Premium Pick-guard  | \$24.95 |
| Custom Pick-guard   | \$29.95 |

|                  |          |
|------------------|----------|
| Control Cover    | \$9.95   |
| Headstock        | \$5.95   |
| Knobs            | TBD soon |
| Switch Plate     | TBD soon |
| Key Chain        | TBD soon |
| Cell Phone Case  | \$9.95   |
| Guitar Clock     | TBD soon |
| Guitar Light Box | TBD soon |

Please check back often for new or changing designs.



Flaming Skull 2/4



Pot Leaf 2/4



Rose 2/4

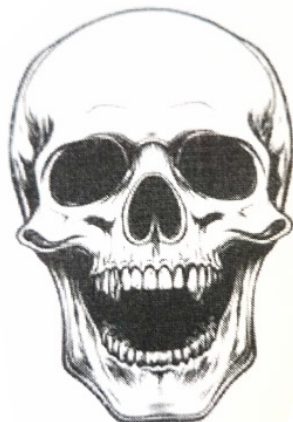
Lips 2



Flag 2/4



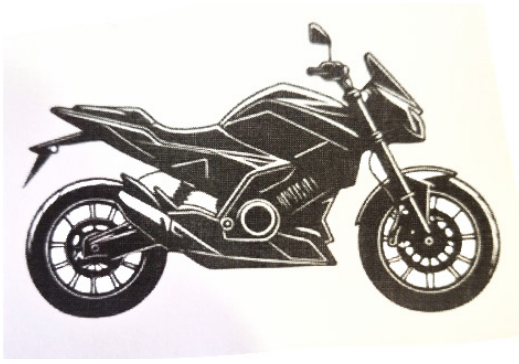
Pot Leaf 2/4



Skull 2/4



Evil Clown 2/4



Sportbike 2/4



SportBike 4



Rose Stem 2/4



Gecko 2



Flaming Skull 2/4



Flaming Skull 4



Tree 2/4



Tree 2/4



T-1



Rose Stem 2/4



Evil Balloon 2/4

Eagle Flying 2/4



Cobra 2/4



Fender Rose 2/4



Eagle Head 2/4



Soul Eater 2/4



Flaming Guitar 2/4



Scorpion 2/4



Eagle Flying 2/4



Shark 2/4



Cobra 2/4



Flaming Skull 2/4



Mountains 2/4



Evil Clown 2/4



Eagle Head 2/4



T-Rex 2/4



Flaming Skull 2/4



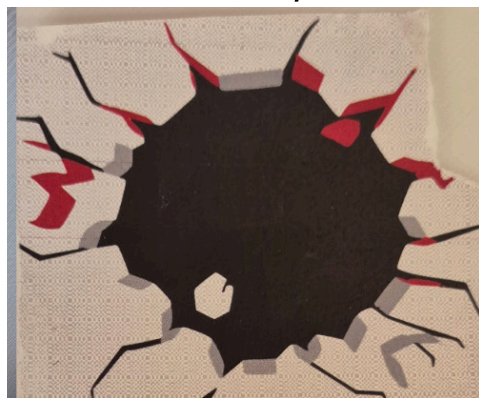
Hockey Mask 2/4



Cat 2/4



Leaf 2/4



Hole 2/4



**Sword 2/4**



**Zodiac Libra 2**



**Cat 2/4**



**Quarter Moon 2/4**



**Clown & Pals 2/4**



Cell Phone



Cell Phone



Wall Switch



Wall Clock



Any Names 2/4