

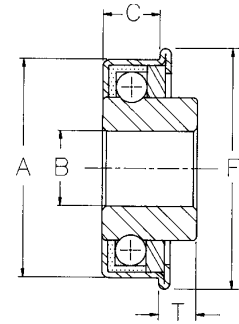
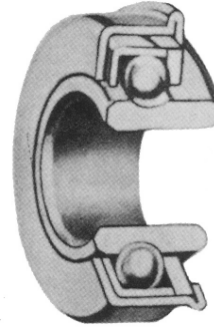
# FLANGED BALL BEARINGS

## **EAGLE BEARING**



**EAGLE BEARING, LTD.**

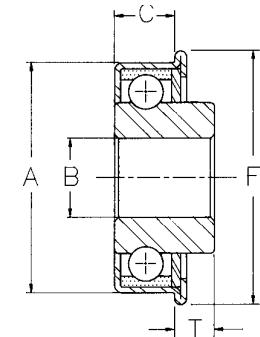
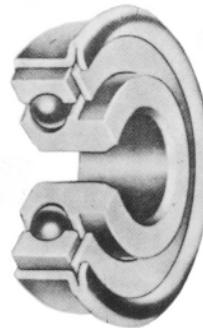
P.O. BOX 327  
 NEWBURGH, IN 47629-0327  
 TEL: (812) 491-9667  
 FAX: (812) 491-9668  
 www.eaglebearing.com  
 eaglesales@eaglebearing.com



**Single Grooved Bearing**

### Single Grooved Bearing

Item No.	Size	Description	Dimensions in Inches					Radial Load Rating at 300 RPM in Lbs.
			Outside Dia. A	Bore B	Front Extension T	C	Flange Dia. F	
83212	3/8" x 1-1/8"		1.126-1.132	0.376-0.381	0.118-0.132	0.293-0.297	1-1/8"	65
84210	7/16" x 1-1/8"	w/ Ext Race (13/16")	1.126-1.132	0.438-0.444	0.118-0.132	0.293-0.297	1-1/8"	65
84211	7/16" x 1-1/8"		1.126-1.132	0.438-0.444	0.118-0.132	0.293-0.297	1-1/8"	65
85201	1/2" x 1-1/8"	w/ Black Seal	1.126-1.132	0.502-0.508	0.118-0.132	0.293-0.297	1-1/8"	65
85202	1/2" x 1-1/8"		1.126-1.132	0.502-0.508	0.118-0.132	0.293-0.297	1-1/8"	65
85214	1/2" x 1-1/8"	w/ Ext Race (1")	1.126-1.132	0.501-0.506	0.100-0.120	0.293-0.297	1-1/8"	65
85215	1/2" x 1-3/8"		1.375-1.380	0.501-0.507	0.115-0.135	0.378-0.386	1-3/8"	100
85220	1/2" x 1-1/8"		1.126-1.132	0.502-0.506	0.120-0.130	0.293-0.297	1-1/8"	65
86210	5/8" x 1-3/8"		1.375-1.380	0.628-0.633	0.115-0.135	0.378-0.386	1-3/8"	100
87210	3/4" x 1-3/8"		1.375-1.380	0.752-0.757	0.115-0.135	0.350-0.358	1-3/8"	100



**Double Grooved Bearing**

**Double Grooved Bearing:** Inner wire race is grooved to take heavier loads at higher RPM.

Item No.	Size	Description	Dimensions in Inches					Radial Load Rating at 600 RPM in Lbs.
			Outside Dia. A	Bore B	Front Extension T	F C	Flange Dia.	
81210	1" x 2"		2.130-2.146	1.008-1.017	0.626-0.634	0.457-0.449	2"	420
85219	1/2" x 1-3/8"	w/ Black Seal	1.375-1.380	0.501-0.507	0.115-0.135	0.378-0.382	1-3/8"	200
85221	1/2" x 1-3/8"		1.376-1.381	0.501-0.505	0.115-0.135	0.311-0.319	1-3/8"	200
85230	1/2" x 1-1/8"	w/ Black Seal	1.126-1.132	0.501-0.505	0.116-0.136	0.293-0.297	1-1/8"	120
86213	5/8" x 1-3/8"		1.376-1.381	0.626-0.630	0.115-0.135	0.311-0.319	1-3/8"	220
86216	5/8" x 1-3/8"	w/ Black Seal	1.375-1.380	0.626-0.632	0.115-0.135	0.378-0.382	1-3/8"	200
87213	3/4" x 1-3/8"		1.376-1.381	0.752-0.756	0.115-0.135	0.311-0.319	1-3/8"	220
87214	3/4" x 1-3/8"	w/ Black Seal	1.375-1.380	0.751-0.757	0.130-0.150	0.378-0.382	1-3/8"	200

**BEARING MODIFICATIONS:** The listed bearings can be modified to meet special requirements. Bores of other diameters, hexagonal and square holes, inner races of special width, inner races with tapped set screw holes, etc., can be furnished.