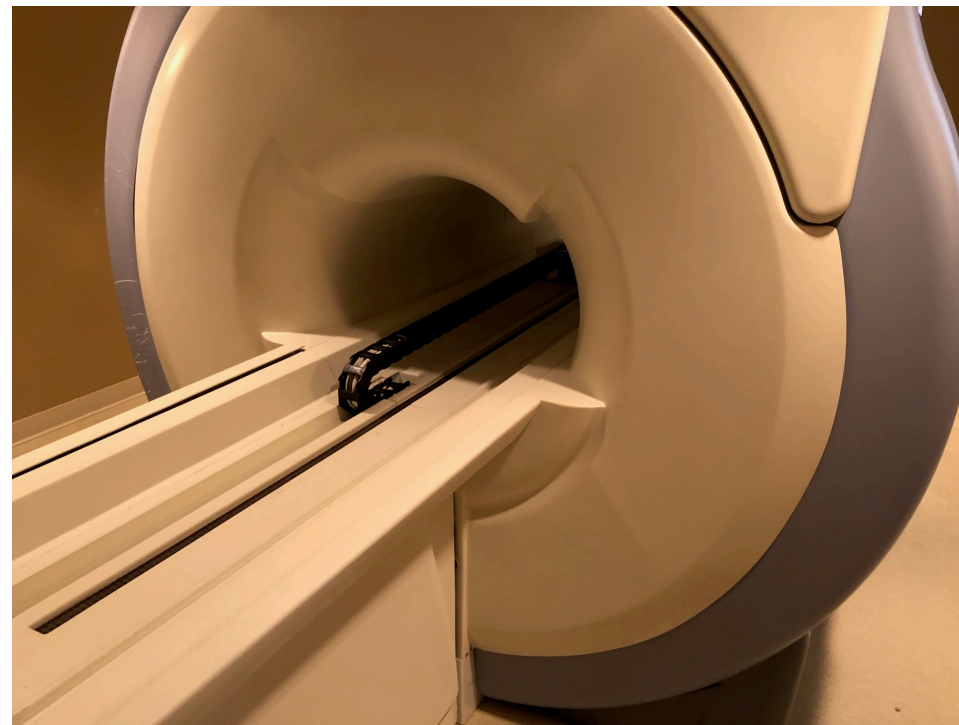


2005 GE Signa 1.5T MRI, 11x



Home

Error Logs

Diagnostics

Image Quality

Calibration

Configuration

Utilities

Replacement

PM

Home

Hospital Information

Hospital Name :
System Id :
Time Zone : A
Computer type : PC
Suite Id : GEMS
Language : English
Magnet Serial Number :
Host IP : 10.19.25.220
FE Laptop IP : 10.19.25.222
Gradient Amplifier : S915
Field Strength : 15000

System Health Information

The system health check is not available under non-proprietary mode

Release Information

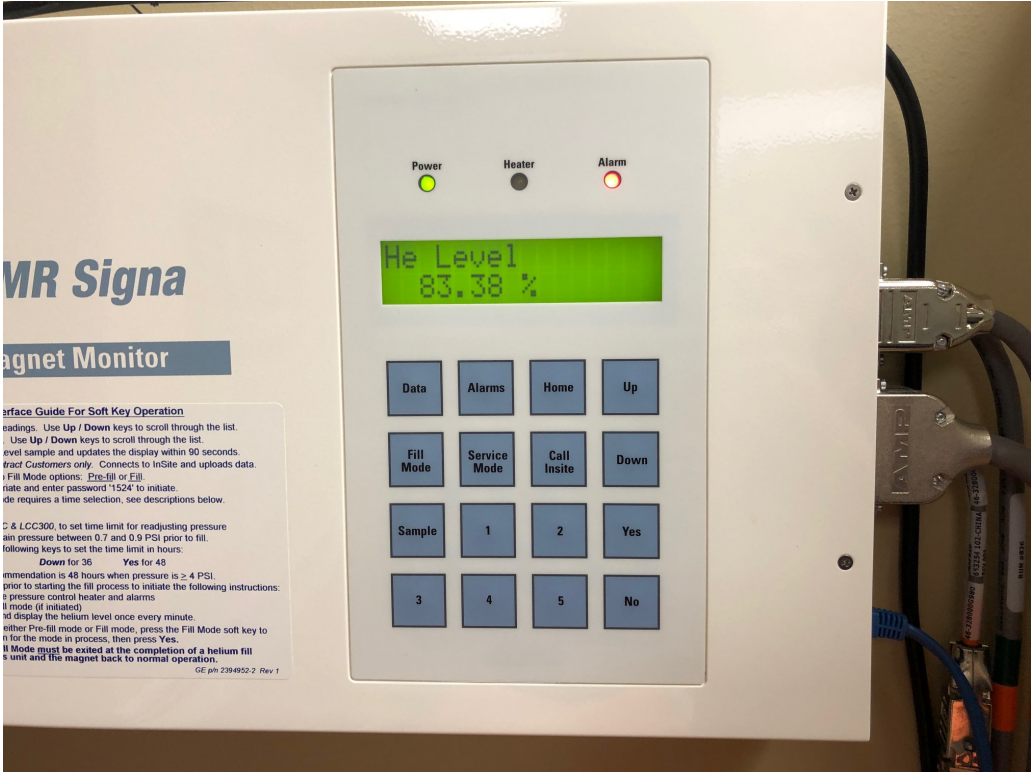
Hostname :
Build number for MrpApps is 11.1_M4_0818.a
Build number for OS is GEHC/CTT_Linux 6.2.15
Build number for PostSdC is 11.1_M4_0818.a
Build number for ServicePack-05 is 11.1_M4_0818.a.PQ
Build number for TERRA is IOS 20070227_R293b
Build number for cclass is 11.1_M4_0818.a
Build number for driverSupport is 11.1_M4_0818.a
Build number for insite is 11.1_M4_0818.a
Build number for install is 11.1_M4_0818.a
Build number for mx_apps is 11.1_M4_0818.a
Build number for mx_plat is 11.1_M4_0818.a
Build number for mx_terra is 11.1_M4_0818.a
Build number for pc is 11.1_M4_0818.a
MR Software release: 11.1_0818a

System Information

CPU: GenuineIntel Intel(R) Xeon(TM) CPU 2.66GHz
4 2658 MHz i686 Processors
Secondary cache: 512 KB
FPU: GenuineIntel Intel(R) Xeon(TM) CPU 2.66GHz Floating Point
Main memory size: 2048 Mbytes
SCSI controller 2: Version mptspi
Device 01 on SCSI controller 2, Lun 00
Device 02 on SCSI controller 2, Lun 00
SCSI controller 1: Version mptspi
Device 00 on SCSI controller 1, Lun 00
IDE controller 1: PCI
CDROM Device: unit c on IDE controller 1
1 Graphics board: VGA detected at 03c0-03df
Ethernet interface configured: eth0
Ethernet interface configured: eth1
Ethernet interface configured: eth2

C Shell

Unmount CD







Coils

- 4 channel ctl coil
- 2 small flex coils
- shoulder coil array
- wrist coil
- torso array
- split head coil
- extremity coil
- 3 inch round coil
- Neurovascular array.