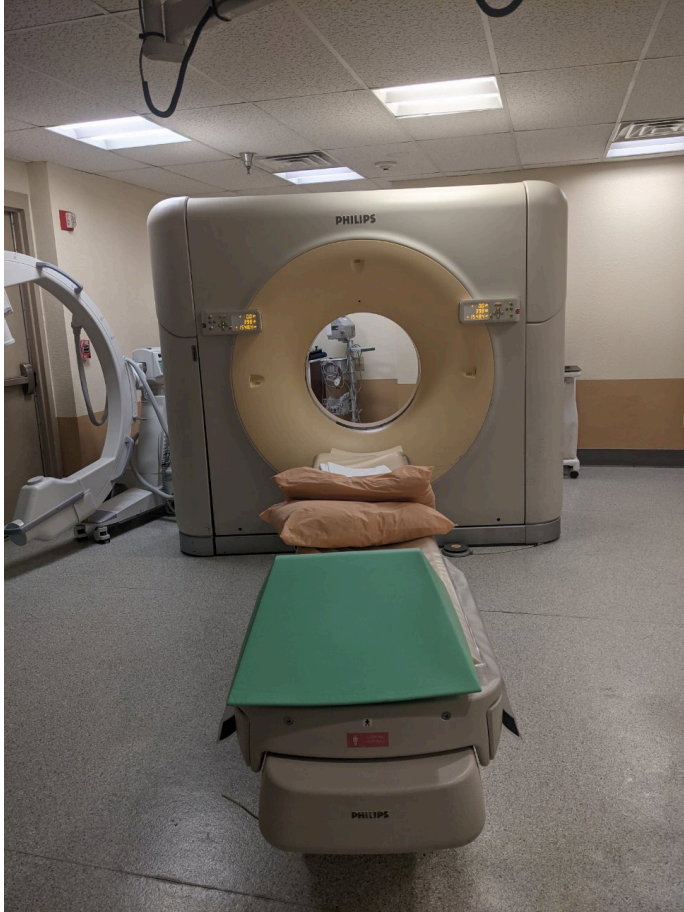


2008 Philips Brilliance 64

# Tube info

- The tube is still the tube that came installed in the scanner in 2009.
- It is a genuine Philips tube with 531993 seconds.




**PHILIPS**

**Brilliance™ CT**

**Release 2.6.2**

**CE**  
Philips Medical Systems Nederland B.V.  
Veenpluis 4-6, 5684 PC Best,  
The Netherlands



**© KONINKLIJKE PHILIPS ELECTRONICS N.V. 2004.**  
All rights are reserved.

PHILIPS MEDICAL SYSTEMS (CLEVELAND), INC.  
CLEVELAND, OHIO 44143 U.S.A.  
FACTORY:  
PHILIPS MEDICAL SYSTEMS (CLEVELAND), INC.  
CLEVELAND, OHIO 44143 U.S.A.

REF / MODEL: 455011309001  
S/N: 15429  
DESCRIPTION:  
GANTRY, BRILLIANCE CT 64  
RATING:  
4000mA, 50000 Hz

MANUFACTURED IN CHINA  
2008

PHILIPS MEDICAL SYSTEMS (CLEVELAND), INC.  
CLEVELAND, OHIO 44143 U.S.A.  
FACTORY:  
PHILIPS MEDICAL SYSTEMS (CLEVELAND), INC.  
CLEVELAND, OHIO 44143 U.S.A.

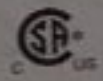
### BRILLIANCE CT

REF / MODEL: 455011009021  
S/N: 0929  
DESCRIPTION:  
728231, BR64 SYSTEM  
RATING:  
2000mA, 50000 Hz  
4000mA, 50000 Hz

MANUFACTURED IN CHINA  
2008

COMPLIES WITH THE FOLLOWING STANDARDS  
IN EFFECT AT THE DATE OF MANUFACTURE:

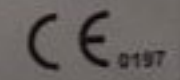
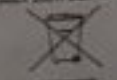
UL 60601-1  
CAN / CSA C22.2 NO. 601.1  
EN / IEC 60601-1  
CISPR 11: CLASS A + 12



136608

RADIATION PERFORMANCE PER IEC 61312 CFR SUBCHAPTER J  
MINIMUM X-RAY FILTRATION = 2.5mm Al PER 50kVp

LASER PERFORMANCE PER FDA 21 CFR 1040.10 AND 1040.11  
EXCEPT FOR DEVIATIONS PURSUANT TO LASER NOTICE  
NO. 98-10 DATED 22 JULY 2001, CERTIFIED TO EN / IEC 60825-1



Philips Healthcare Refurbished System  
905 Miles Road  
Cleveland, Ohio 44143  
Phone: 440-485-1300

Date of Refurbishment:  
December 03, 2008

Project Number:  
2008-0188