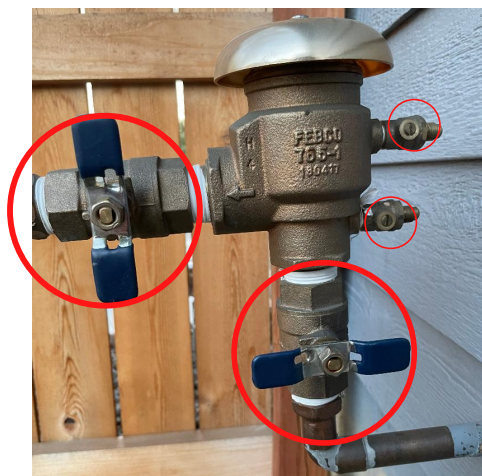


Sprinkler Activation ●●●



STEP 1

Close all four valves on the outside siphon valve so they are perpendicular to the pipes.

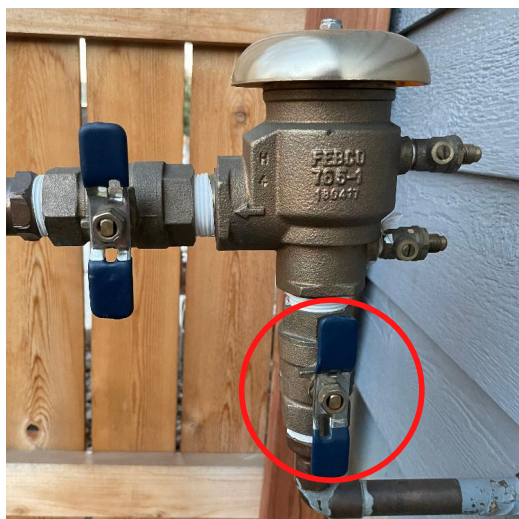
The two smaller ones will require a flathead screwdriver.

Close the drain in the valve box if necessary. No action is required if the valve box is "self-draining."

STEP 2

Inside the house, screw the cap back on the drain and slowly open the water supply line valve.

The supply line valve is open when it is parallel to the main pipe.



STEP 3

Slowly open the lower valve on the outside siphon valve. When it's completely open, it will be parallel with the main pipe.

Some water will bleed off, but will stop when the siphon valve captures pressure in the bonnet.

STEP 4

Slowly open the top valve on the outside siphon valve until it is parallel with the main pipe.

Your system is fully activated and there shouldn't be any water until you turn on the clock.

