



**SOUTH  
CAROLINA  
CHAPTER**

# *Newsletter Quarterly*

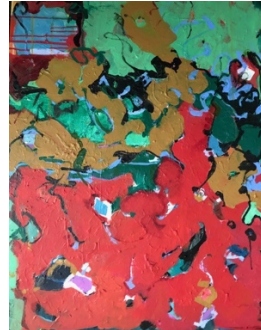
2022:1



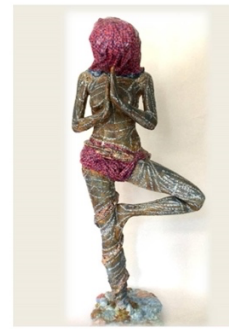
Lisa Anne Cullen



Lisa Rivers



Sheila Grabarsky



Bernice Tate



Susan Irish

## *NAWASC: Big News*

In November 2021, NAWASC held a virtual annual meeting of the membership. That meeting was full of information for our members, but we were also focused on listening. Immediately following the meeting, we sent our members a survey with questions that would help us get to know you better and questions that would help guide the Board towards the wants and needs of our chapter membership. We gathered information on everything from your materials of choice, to who mentored you, to how many exhibits you wanted to participate in yearly, to your level of interest in volunteering with the Chapter. While it will take the Board some time to create the full strategic plan based on this data, we have already started making decisions about numbers of exhibits both online and face to face, entry fees, and networking opportunities. Many thanks to our members who gave us great feedback. We all agree to gather for an annual meeting, and we will begin holding these in the Spring 2023.

For Spring 2022, we will hold member events around our exhibition at the Aiken Center for the Arts. *Spring Fusion: Renew and Reinvent* will open on March 31st with a reception from 6-8pm. The exhibit will run through May 6, 2022. We encourage all members to join us for a Welcome Lunch at noon on March 31st, followed by the opening and reception later in the evening. If you'd like to bring a friend who is not currently a NAWA member, we'd like to show them what we are all about. Our host, the Aiken Center for the Arts, is a dynamic and engaging Gallery in the heart of downtown Aiken, SC. This exhibit coincides with the Masters Golf Tournament in Augusta and is a prime tourist time for Aiken. As always, we take safety seriously. We are planning to see each other and see the art in person following safety protocols. Please visit [nawasc.org](http://nawasc.org) for more information on how to rsvp for the luncheon and how to join in the fun of the opening reception.

## INTRODUCTIONS: *New NAWASC Members*

We introduce you to our new chapter members — Mary Ann Browning Ford, Nancy Jacey, Muffy Clark Gill, Pamela D. Parks McLaurin, Joanna Coke and Pat Zalisko – and warmly welcome them to our Chapter.

- Mary Ann Browning Ford lives and works in Bluffton, SC. She is a muralist and has clients throughout the United States and abroad.
- Nancy Jacey lives and works in Richmond, VA. Her work has been featured in numerous publications. Find her at [nancyjacey.com](http://nancyjacey.com).
- Muffy Clark Gill, from Naples, FL, is an expert in the art of batik, a wax resist method of painting. Find her at [muffyclarkgill.com](http://muffyclarkgill.com).
- Pamela Parks McLaurin is from Savannah, GA. She is a sculptor creating mainly portraits in clay.
- Joanna Coke is from Nokomis, FL. Her bio is full of interesting places she has exhibited and taught. Check out her work at [www.joannacoke.com](http://www.joannacoke.com).
- Pat Zalisko is from Estero, FL. She works in painting and collage and exhibits widely. Find her at [www.pzk.com](http://www.pzk.com).

New members, NAWASC is proud to include you in our membership and we look forward to working with you.

## UPDATE: *Exhibits and Professional Development*

NAWA SC members are featured in the following exhibitions:

- *New Dimensions* includes Pat Zalisko's 'Nocturnal Wanderings' and Joanna Coke's 'Atomic Joy.'
- *Healing* includes Sandy Dimke's 'A Touch of Friendship.'
- *At a Crossroads* includes Sandy Dimke's 'Uncertain' and 'Take the Long Way Home'; Joanna Biondolillo's 'Without Shelter'; Melinda Welker's 'Up In the Air'; Susan Irish's 'Slipping Into the Sea'; and Fran Gardner's 'My Theory of Everything.'

Tune in to the online reception and awards on Thursday, February 24, 2022 to see Sandy Dimke accept her Second Place Award and all the pieces selected for this exhibit. Watch for an email from NAWA with the link. Congratulations to all!

The members survey pointed to two areas in which our members are most interested – exhibits and professional development. The Board is carefully considering the feedback and making plans that respond to our member's needs. We will begin rolling out plans in March for a mix of online and in person exhibitions. We also saw an interest in professional development activities that would include networking and opportunities to share and critique work. The first of this virtual series is a "Get to Know NAWA SC Members" event. Mark your calendar for April 5 at 6pm and choose one piece to share. More details to come in your email.

## COMMUNICATIONS: *Let Us Promote You*

We want to stay up to date on your art life. Send images of you and your work, social media contacts, website address, biographies, and artist statements. We will pull from this information to keep the [nawasc.org](http://nawasc.org) website current so that it is a useful tool for you to promote your work. To make this easier for all of us, please use this link to share your information.

<https://www.cognitofrms.com/SCChapterNAWA/NAWASouthCarolinaChapterMemberInformation>

**Note that our email address has changed.** We want our email address to be recognizable when it shows up in your inbox. Be sure to make this change in your contacts and email us at [art.nawasc@gmail.com](mailto:art.nawasc@gmail.com).

## OUTREACH: *Board Development*

The SC Chapter is very interested in expanding its Board membership. If you are a member of National and the SC Chapter, and you have an interest in service in the arts, please contact us through the website. The SC Chapter Board is already strong with leaders who believe in the mission of NAWA, and we would love to add another board member who shares our vision. Our websites are full of information about the National Association of Women Artists ([thenawa.org](http://thenawa.org)) and the SC Chapter ([nawasc.org](http://nawasc.org)). Take a look and contact us to be part of the leadership of an organization with a strong mission to promote women artists. (<https://nawasc.org/contact>).

## IN MEMORIAM: *Our Friend, Diane Britton Dunham*



We are very sad to share that we recently lost one of our fellow artists, Diane Britton Dunham, on Monday, January 31, 2022. She was an amazing soul and inspirational leader in her local arts community. To know Diane was to love her, and she will be greatly missed. Please join us, as we continue to pray for the comfort of her loved ones during this time of bereavement. For those who do not know Diane, we want to share a little about her life as a Gullah Creole Artist. Born and educated in Ohio, Diane Britton Dunham drew from countless memories of her family's experience as the inspiration for her artwork. Touched by the commonalities that all Africans in America share, Diane created works that celebrate the common traditions of historical African American cultures, particularly those of the Lowcountry of South Carolina and the coastal parishes of Louisiana. Diane spent many childhood years in Louisiana and later, at the age of 25, she moved to the coastal Lowcountry of South Carolina, where she lived over half her life. Both highly recognized regions impacted the style, technique, and subject matter that distinguished her pieces. While the Gullah Geechee culture of South Carolina is unique in its preservation of culture through undisturbed African lineages, the Creole culture is a celebration of the blending of French, African, Spanish, and Native American cultures. Paradoxically, Diane was able to capture significant components of each culture within her creations. Pieces created by Diane represented the landscape, customs, and heritage of the coastal areas of both South Carolina and Louisiana as characterized by marshes, bayous, open and natural sun and moonlight, and pastoral homes, schoolhouses, and churches. (Contributed by Sandy Dimke and Ginger Wareham)

## MEMBER FEATURE: *Mary McDonough*

Get to know Mary, collage artist from Seneca, SC, member of the National Association of Women Artists and the SC Chapter.

**Tell us about your work:** The southeastern US landscape and its people have influenced my perspective in creating art. My art practice reflects how I view the world, past, present, and future. My work is not representational, but an abstraction; it evokes the scene of the subject and the feel

of the moment. Concentrating on the desire for the viewer to see blocks and shapes of color, shadows, and textures in our world, I create a moment in time to pause and consider...that's different! Working with a planned color palette, theme, and collage elements, I use shape, texture, and color to interrupt and pivot a piece in an unexpected direction. Forms are used in modified colors that are opaque or translucent; along with a variety of textures that are painted or printed in acrylic. Wet or dry charcoal sticks, oil sticks and implements are used. Acrylic mediums and varnishes, oil varnish and cold wax are used to finish the piece.



*Cascade Locks Train, Mary McDonough*

**Who is your art crush?** I have two phases of my Art Crush — the past and the present. I love many artists' new digital works I see on Instagram and other media sources. Even so, I keep going back to Romare Bearden and Cedric Morris. They both used color and shape, flattening forms, and yet creating depth through texture and shadows. They took reality and bent it around to create an abstraction of a moment in time to make an artistic statement.

Tell us about your most influential time: In 1987 my husband and I had a very active 2-year-old. Family funds and morale were low. When I came up with the idea to go back to school, my husband didn't think it was possible. I applied for and received financial aid, a graduate assistantship, and a graduate artist studio. Thanks to the dedication and hard work of Dr. Margaret Johnson and Professor Paul Martyka, I worked toward

completing an equivalent BA in Art to satisfy graduation requirements for an MAT in Art Education at Winthrop University.

**What is your superpower?** The main strength for me is that I don't know when to give up on something even when things aren't going as planned. I have it in my brain to create and make and present and keep moving forward. Sometimes you win and sometimes you lose, but you still get up in the morning and put on your makeup.

**Greatest moment in your art world:** Selling art is great, don't get me wrong! But it's not the only thing that motivates artists. I have many moments that stand out in my art world — creating art shows for students and parents, the process of watching and guiding children to make their art, moving forward professionally as an artist, winning 1st place in big fancy art shows, obtaining membership in NAWA and hearing my husband tell people he's married to an artist — these are all great moments in my artistic life.

See Mary's work on Instagram @collageandpaint and on her website at [www.collageandpaint.com](http://www.collageandpaint.com)



NAWA SC is proud to be a part of the National Association of Women Artists and further the national mission in our state of South Carolina – to promote awareness of, and interest in, visual art created by women in the United States. Please contact [art.nawasc@gmail.com](mailto:art.nawasc@gmail.com) if you have questions about this news update, have news to share or wish to join the NAWA SC Chapter. To learn more about our members and our chapter, scan the QR code to visit <https://nawasc.org>.