

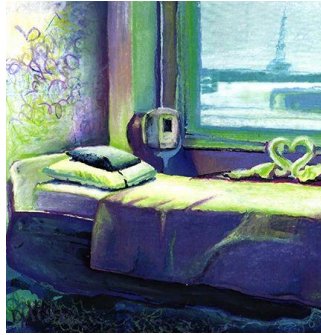


SOUTH  
CAROLINA  
CHAPTER

## Newsletter Quarterly 2022: 2



Patricia Zalisko



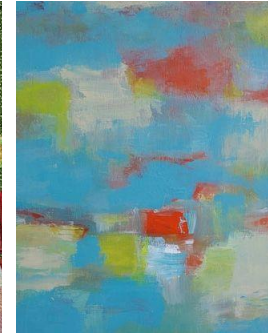
Brittany Taylor-Driggers



Kimberlee Maselli



Betsy Hughes



Rose Cofield

### OUTREACH: *Board Development*

The SC Chapter needs to expand its Board membership. If you are a member of National and the SC Chapter, and you have an interest in service in the arts, please contact us through the website or [art.nawasc@gmail.com](mailto:art.nawasc@gmail.com). The SC Chapter Board is already strong with leaders who believe in the mission of NAWA:

*"I joined the board to support the organization, as I have been a member of NAWA for 18 years, and it's important to give back. I also moved to South Carolina 4 years ago, and joining the board was a way for me to meet artists in this area, and to have a support system. Being on the board has brought me a wide variety of friendships from both the board and in the membership. It is gratifying to have input into the growth of the chapter, which in turn has furthered my career."* Mary Steffen

*"Since I have always been self-employed, joining a board made me nervous but this group is so organized and efficient that I have grown in confidence and feel a deeper connection to other professional women."* Susan Irish

We would love to add another board member who shares our vision. Our websites are full of information about the National Association of Women Artists ([thenawa.org](http://thenawa.org)) and the SC Chapter ([nawasc.org](http://nawasc.org)). Take a look and contact us to be part of the leadership of an organization with a strong mission to promote women artists. (<https://nawasc.org/contact>).

### NAWASC: *Big News*

Our Chapter's 2022 in person exhibit, "Spring Fusion: Renew and Reinvent," is currently at the spacious Aiken Center for the Arts in downtown Aiken, South Carolina, through May 6th. The show includes 50 works of art from 22 talented Chapter members. ACA hosted an opening reception on March 31 which was open to the public. Members and their guests attended from across the state. The exhibit was judged by Columbia, SC artist Heidi Darr-Hope who was also present at the opening and shared her thoughts on why she selected these pieces for honors. 1st Place was awarded to Susan Irish for "Regeneration," 2nd Place to Mary Cooper McDonough for "Writing

Poetry on a Sunny Day," 3rd Place to Judith Carlin for "Together" and Honorable Mention to Carol O'Neill for "Camelia." The judge also awarded two Judges Commendation Awards to Fran Gardner for "Mark Leaving: Binary" and Mary Bell Steffen for "Looking Down from Moose Road." The venue and time were chosen to coordinate with the large number of tourists visiting Aiken during the Masters Golf Tournament in nearby Augusta.

"On The Edge," a NAWA national exhibition will be at the Historic Vendue Art Hotel, at Gallery 26, during the renowned Spoleto Festival. The exhibition focuses on climate change, social injustice, inequality and cultural responsibility. Among the artists chosen for this exhibition are ten SC Chapter member artists. They Include: Joanna Biondolillo, Rose Cofield, Lisa Anne Cullen, Fran Gardner, Laura McRae Hitchcock, Susan Irish, Mary Nicholson, Mary Cooper McDonough, Sandra Renee Smith and Bernice Tate. The exhibition runs from May 22 – June 13, 2022.

### INTRODUCTIONS: *New Members*

We introduce you to our new chapter members:

- Brittany Taylor-Driggers lives and works in Lancaster, SC. She is an assistant professor of art at the University of South Carolina Lancaster where she is also the Curator of Collections at the Native American Studies Center.
- Kimberlee Maselli lives and works in Cary, NC. She has exhibited her landscapes and abstracts widely and won many awards. In addition, she has authored 4 art books.

New members, NAWASC is proud to include you in our membership and we look forward to working with you.

### UPDATE: *Professional Development*

As a result of our members survey, we offered our first professional development online program. We want to get to know all members, so at this first event 14 artists presented and discussed one piece of their work. Insightful and fun, we will offer another "meet and greet" event in June. We have other topics in development for August and October. Please watch your inbox for announcements of these fun and educational events. More details to come in your email.

Our next professional development opportunity is a FIELD TRIP to ART FIELDS! If you have never been, check out [www.artfieldssc.org](http://www.artfieldssc.org) to see what's happening. In short, it is a tremendous exhibition of contemporary art in the south and it blankets the town of Lake City, SC. And we have several NAWA SC members in the show! If you want to go, please rsvp by April 22 to [art.nawasc@gmail.com](mailto:art.nawasc@gmail.com).

Here are the details:

Date: April 29, 2022

Time: 11am (The galleries open at 10am, so come early if you wish.)

Where: At the Art Fields Welcome Center at 110 E Main Street. We will all register while there and get a Field Guide.

Then: Go off on your own, or form groups.

If you want to stay late, artist talks are at 5-7pm and music at 7:30-9pm.

Depart when you wish.

### COMMUNICATIONS: *Let Us Promote You*

One of our primary goals is to spread the word about our National Association, our SC Chapter and our members. NAWA has an incredible history — when opportunities arise, we always share the history, legacy, and benefits of NAWA and SC Chapter membership. Our newly printed rack cards

are being distributed at events and local places of interest. We are always on the lookout for places to network with artists, share the story of our historic organization and find great SC venues to show our work.

To help us do this important work, once a year at membership renewal time, we will notify you to update your information, share new work and pay your dues. Your information and pictures help us keep the NAWA SC website current and promote you. When it is time to renew your membership with the SC Chapter, we will notify you and send a link to a form where you can easily update your information.

Your membership fees support the online service to run our website, including our domain name. Your fees pay for the software to create and post online shows, awards in our show competitions, and supplies to support our NAWA SC events. Recently we printed a new rack card to support our events and to drive membership. We also have the typical office supplies, mailings, and postage, also covered by your membership dues.

Our website is continually updated, often more than once a week. We keep you advised of upcoming shows, competitions, and announce news and awards at our events. The website lists all members alphabetically, along with an example of your work, your biography and link to your website if you provide that to us. You'll find information on our board members and their primary areas of responsibility in the organization. Please reach out to the appropriate board member with your questions. The website is also the first step to join our membership, or to recommend a fellow NAWA member to our chapter. Most recently we posted the winning entries in the "Spring Fusion: Renew and Reinvent" exhibition. The homepage was also refreshed with images by our latest members and lots of photos from our "Spring Fusion" day of events. For your reference, past newsletters are posted on the website to download.

We need you to help us promote you and our organization. Send images of you and your work, social media contacts, website address, biographies, and artist statements. We will pull from this information to keep the [nawasc.org](https://www.nawasc.org) website current so that it is a useful tool for you to promote your work. To make this easier for all of us, please use this link to share your information.

<https://www.cognitofirms.com/SCChapterNAWA/NAWASouthCarolinaChapterMemberInformation>

**Note that our email address has changed.**

[art.nawasc@gmail.com](mailto:art.nawasc@gmail.com)

**MEMBER FEATURE:** *Susan Irish*, Artist and Retired Art Teacher from Charleston, SC

**Tell us about your work:** I am on a mission to promote better stewardship for Mother Nature by creating paintings that depict the battle between the flowers and the toxins. I ask the question "Who will win? My medium is oil and cold wax applied in thick layers on wood panels. I gouge into areas and use incongruent colors. Trash that is part of my human footprint is embedded into the work in a variety of ways.

**Who is your art crush?** Michael Hedges is an abstract expressionist artist that I deeply admire for his ability to work



large and with a lot of color and movement. There is an energetic and spontaneous essence with a solid command of the elements and principles.



*Regeneration, by Susan Irish, won First Place in "Spring Fusion"*

**Tell us about your most influential time:** Being sequestered in my studio during the pandemic was a dream come true for this introverted artist so when I was invited to 2 artists' retreats for connection with other women artists, I didn't believe I needed that experience. I went anyway. I found a sisterhood that was life changing.

**What is your superpower?** I like to play. The teacher in me knows the value and my intuitive nature thrives in play. My ability to play while painting is my superpower.

**Greatest moment in your art world:** In 2016, I curated and hosted an epic show called "We, The People, How Artists' Respond To Racism" The gallery was packed

with brilliant artists and attentive guests. There was a drum circle that created a heartbeat for the community and there were deep conversations that echoed the power of the arts in the community.

**You've won first place in the "Spring Fusion" show, now what are you going to do?** Winning First Place at "Spring Fusion" was so delightful because I created the painting especially for that show and it was well received by the wonderful Aiken community. So, to top that experience I will have to cross the big sea. In March of 2023, I will be in Ireland as an artist in residence along with fellow member Laura McRae-Hitchcock. I will spend the entire month following in the footsteps of Ireland's first female botanist.

See Susan's work on Instagram @artbysusanirish and on her website at [www.susanirishartist.com](http://www.susanirishartist.com)



NAWA SC is proud to be a part of the National Association of Women Artists and further the national mission in our state of South Carolina – to promote awareness of, and interest in, visual art created by women in the United States. Please contact [art.nawasc@gmail.com](mailto:art.nawasc@gmail.com) if you have questions about this news update, have news to share or wish to join the NAWA SC Chapter. To learn more about our members and our chapter, scan the QR code to visit <https://nawasc.org>.