



**MASTER GARDENERS**  
"Helping Others Grow"

## LCMGA JUNE EDUCATION PROGRAM

### "Prevention and Diagnosis of Plant Disease"

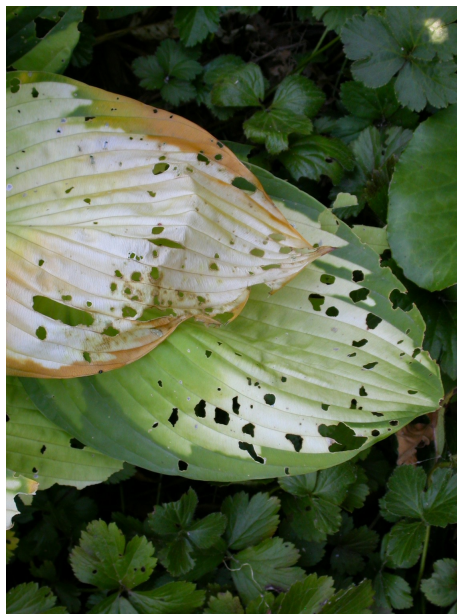


#### "Prevention and Diagnosis of Plant Disease"

Join us for an informative presentation on the "Prevention and Diagnosis of Plant Disease", designed for gardeners, plant enthusiasts, and anyone dedicated to maintaining healthy, vibrant plants. The session will begin by exploring effective prevention strategies that help reduce the risk of plant disease before it starts. From choosing disease-resistant plant varieties and maintaining proper watering techniques to improving soil health and ensuring adequate air circulation, we'll cover practical, eco-friendly methods that support long-term plant wellness in both indoor and outdoor environments.

Following prevention, the presentation will focus on how to accurately diagnose common plant diseases. You'll learn to identify key symptoms such as leaf spots, wilting, discoloration, and abnormal growth patterns. We'll also discuss how environmental factors, pests, and improper care can contribute to disease development. With clear examples and actionable guidance, this session will equip you with the knowledge and confidence to keep your garden or plant collection healthy, resilient, and thriving year-round.

**Thursday, June 12th**  
**at 6:00 p.m.**  
**Purdue Cooperative**  
**Extension**  
**2293 N. Main St.**  
**Crown Point, IN 46307**



**Nikky Witkowski**  
**Purdue Extension Porter County, Agriculture**  
**and Natural Resources Educator**

Nikky specializes in horticulture and provides expert guidance to the community on sustainable gardening, landscaping, and plant science. With a background in agricultural education and years of hands-on experience, Nikky brings a practical, engaging approach to teaching people how to grow healthier gardens and greener spaces. As a presenter, she is known for her energetic delivery, relatable advice, and commitment to empowering individuals with the knowledge they need to succeed in their gardening efforts. Whether speaking to homeowners, master gardeners, or students, Nikky translates complex horticultural concepts into accessible, actionable insights.

[Click Here to Register For "Prevention and Diagnosis of Plant Disease"](#)



Lake County Master Gardeners Association is a 501(c)(3) corporation.  
Purdue University Cooperative Extension Service is an equal access/equal opportunity institution.



Try email marketing for free today!

