

Next-generation **scalp care solution** that helps create an **optimal environment for hair vitality**

Advanced Formulation of Patented Active Ingredients : Different at Its Core

CELLTERMI HS



Vial 1 : Lyophilized Powder Ampoule (336 mg) + Vial 2 : Activating Solution Ampoule (7 ml)
[Vial 1 + Vial 2] x 4 Sets = 1 Box (A total of 4 Sessions)

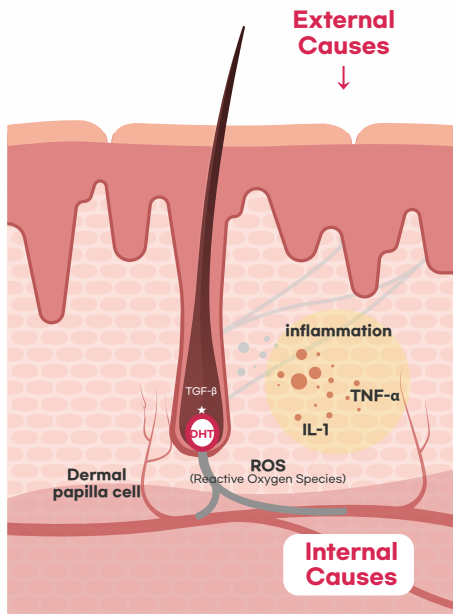
Exosomes
from 4
Probiotic
Strains

Dual Care
For
Scalp & Hair

Stem cell
Conditioned
Media

CHAMEDITECH
|주| 차메디텍

Causes of Hair Loss



External Causes

UV, Pollution, Stress, Hair Styling

Internal Causes

[Inflammation]

Overproduction of IL-1, TNF-α due to inflammation triggers catagen phase and follicular cell death

[DHT]

DHT is produced by the action of 5α-reductase present in dermal papilla cells, which induces cell death

► The most common cause of hair loss (androgenetic alopecia)

[TGF-β]

Overproduced TGF-β in dormant dermal papilla cells leads to fibrotic changes around follicles

Dual Hair Loss Care of HS

Helps maintain a calm, balanced scalp



Short Action
Instant Effect



- Scalp soothing support
- Helps balance scalp oil levels
- Supports a healthy scalp environment

<Clean Scalp>
healthy scalp,
Light and Airy Hair



- Supports scalp vitality
 - Helps promote fuller-looking hair
 - Helps maintain the appearance of hair density
- healthy hair follicle,
Fuller Hair



Long Action
Lasting Effect



For fuller-looking,
resilient hair

Scalp Soothing, Help to Suppress the Causes of Hair Loss, Strengthen from the Roots.

A One-Stop Solution for Hair Loss Care,

Different at Its Core

CHA Meditech's Heritage Ingredients

The Synergy of 4 Patented Probiotic-Derived Exosomes



CHA-Centella CA6 Probiotic EV

Centella Asiatica-Derived
Probiotic Exosomes
Supports comfort for
sensitive scalps

Patent Number : 10-2024-0040421



CHA-MD Exosome

Lactobacillus Paracasei-
Derived Exosomes
Helps soothe
& refresh the scalp

Patent Number : 10-2022-0185054



CHA-Tremella TF1 Probiotic EV

Tremella Fuciformis-Derived
Probiotic Exosomes
Helps support
a healthy-looking scalp

Patent Number : 10-2024-0040422



CHA-Kimchi K317 Probiotic EV

Kimchi-Derived Probiotic
Exosomes
Supports the look of fuller,
healthier hair

Patent Number : 10-2024-0040423

The advanced efficacy of patented human-derived stem cells



CHA-EPC-CM

Human Umbilical Mesenchymal Stem Cell Conditioned Media

By converting umbilical-cord-derived mesenchymal stem cells into epidermal progenitor cells, it delivers enhanced antioxidant efficacy and powerful skin-protective synergy

Helps protect the scalp from oxidative stress, improve wrinkles and maintain a youthful-looking scalp

Patent Number : 10-2178778

Mechanism of Action of HS

**A New Approach in Hair Loss Care,
The Birth of an All-In-One Solution**

All of This, In Just One Bottle



Improve the scalp condition and suppress the Causes of Hair Loss with exosomes

Activate dermal papilla cells through patented growth factors,

- For long-lasting, synergistic effects

CELLTERMI HS





Packed with selected ingredients for a healthier-looking scalp

Vial 1 : Lyophilized Powder Ampoule



336 mg / vial

Patented Ingredients to achieve fuller, healthier-looking hair






4 types of Exosomes	Growth Factors	CHA-Nidogen-1	CHA-EPC-CM
			
Human, Tremella, Centella, and Kimchi-Derived Probiotic Exosomes	hGH/bFGF/VEGF/IGF-1	Strength of Core Structure	Derived from umbilical cord mesenchymal stem cells
Helps support a balanced, revitalized scalp	Supports a healthy-looking scalp condition	Helps reinforce the scalp's natural matrix	Supports scalp vitality and structure

Formulated to boost key ingredient performance

Vial 2 : Activating Solution Ampoule



7 ml / vial

CHA-Nopecia	PDRN	Biotin Caffeine	HA	CHA-SAC
				
Peptidomimetic heptapeptide in dimeric form	Nucleic acid and sodium complex derived from salmon DNA	Active ingredients for Hair Loss Care	Low molecular weight hyaluronic acid	Antioxidant compounds derived from garlic
Supports the look of fuller, healthy hair	Helps soothe and support scalp renewal	Helps maintain strong, healthy-looking hair	Helps keep The scalp hydrated	Helps soothe and protect the scalp

HS Protocol



Recommended session

Interval | Once a week,
Total 4 times (1 month)
Dosage | 1 set per 1 session
(1 month / 1 box - 4sets)

BASIC session

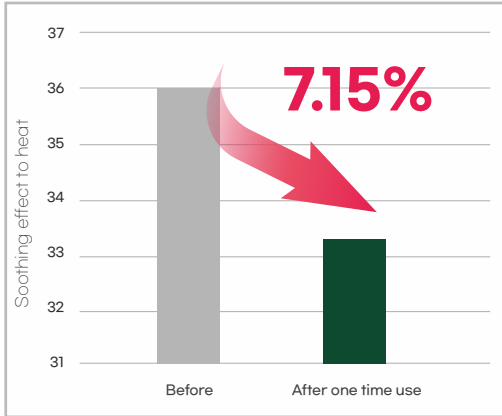
Interval | Every 2 weeks,
Total 4 times (2 months)
Dosage | 1 set per 1 session
(2 months / 1 box - 4sets)

[vial 1: 336 mg + vial 2 : 7 ml] × 4 Sets = 1 Box (A total of 4 Sessions)

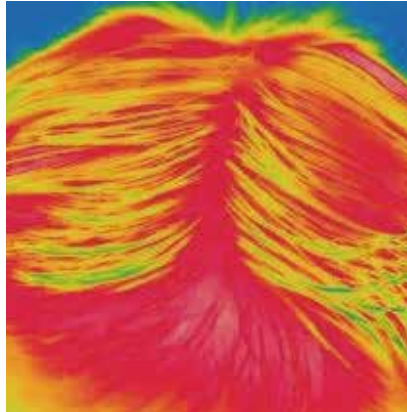
See the difference in just 4 weeks

Experience the remarkable change yourself

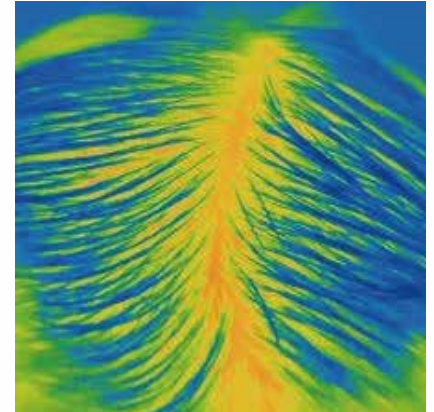
Soothing effect to heat (FLIR T620® evaluation)



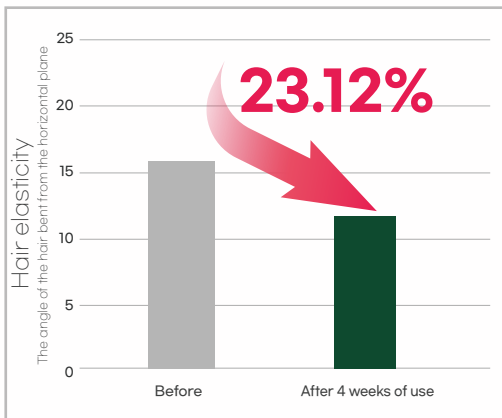
[Before]



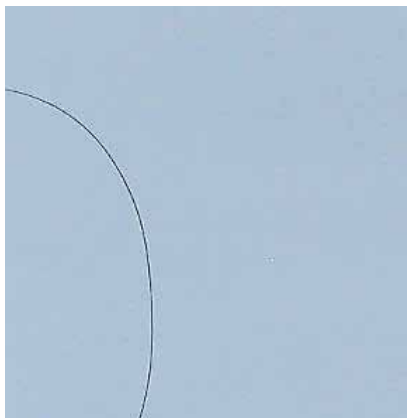
[After one time use]



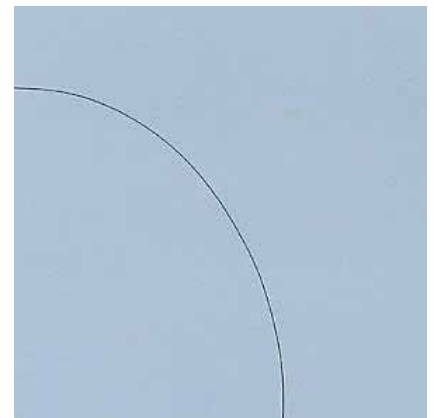
Hair elasticity (VAS evaluation)



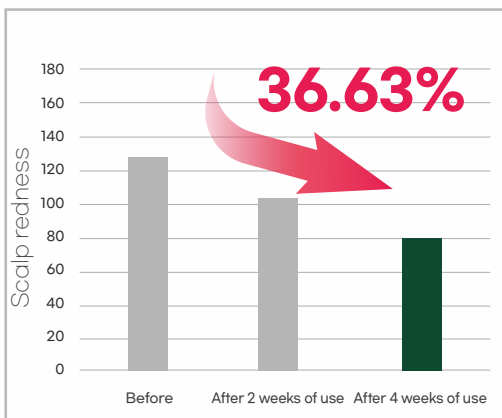
[Before]



[After 4 weeks of use]



Scalp redness (Dermalab® evaluation)



[Before]



[After 4 weeks of use]



This clinical study was conducted on 20 adult subjects aged 27 to 57. (average age: 43.9±10.0)

The number of male and female subjects is equal.

All evaluations were performed to assess the effects of CELLTERMI REVIVE HS before and after use.

From COREDERM Inc. Skin Research Center

Study subject A

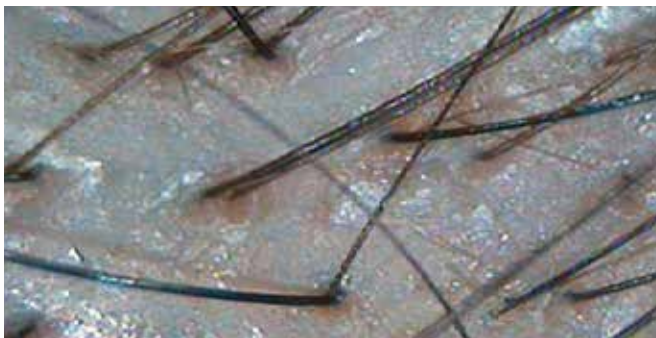


Before

Improvement of crown hair loss



After



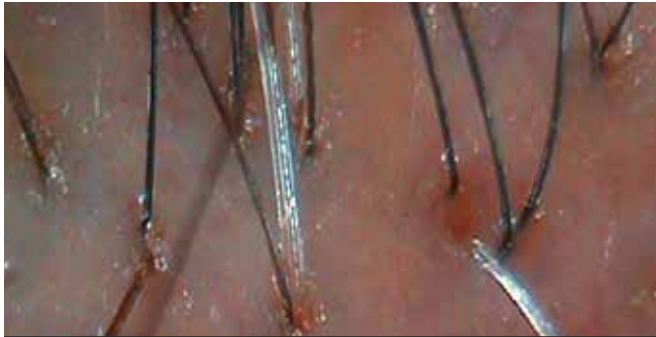
Before

Improvement in hair density



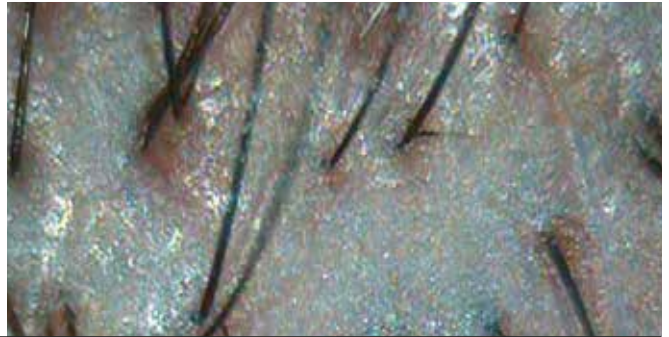
After

Study subject B



Before

Improvement of scalp redness



After



Before

Improvement of crown hair loss



After

Number of participants: 4 / 10weeks (2025.02 ~04)

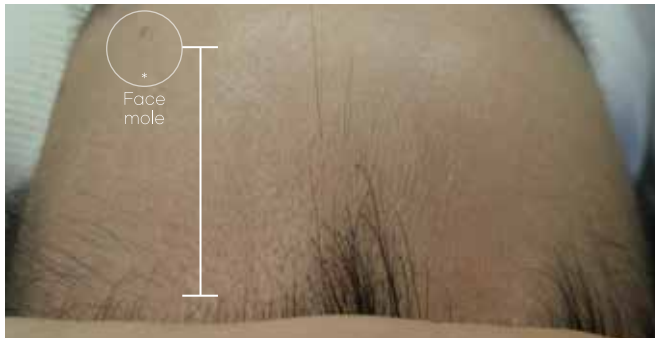
Clinical Study Institution: **JF Dermatology Clinic**

*This image is unretouched and shown as originally taken.

*Clinically tested under dermatologist supervision.

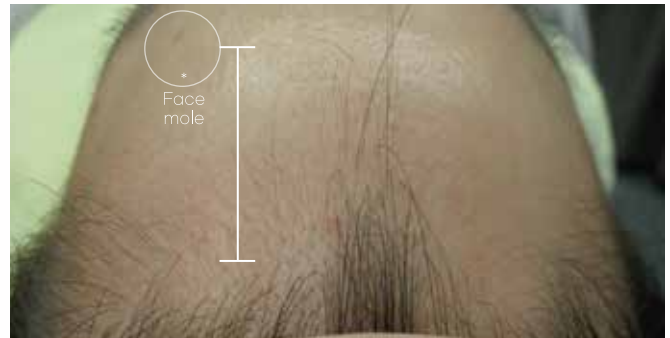
*Results may vary depending on individual scalp conditions.

Study subject C



Before

Improvement of M-shaped hair loss



After



Before

Improvement in hair thickness and scalp redness



After

Study subject D



Before

Improvement of crown hair loss



After



Before

Improvement of M-shaped hair loss



After

Number of participants: 4 / 10weeks (2025.02 ~04)

Clinical Study Institution: **JF Dermatology Clinic**

*This image is unretouched and shown as originally taken.

*Clinically tested under dermatologist supervision.

*Results may vary depending on individual scalp conditions.

CELLTERMI HS: Hair and Scalp Care KIT for Hair Loss



Product Information

Product name CELLTERMI HS

Product contents Vial 1 : Lyophilized Powder Ampoule (336 mg) + Vial 2 : Activating Solution Ampoule (7 ml)

How to use Add the whole amount of vial 2 (Activating Solution) to vial 1 (Lyophilized Powder). Gently shake to dissolve thoroughly. Apply an appropriate amount of the mixture on the hair and let it absorb.

Number of uses For optimal results, 4 sessions of HS is recommended.

Usage interval An interval of 1-2 weeks on average is recommended.

Duration of use 24 months from the manufacturing date

How to store Store at room temperature. Once opened or mixed, use immediately.